

# Prefabricated Roof Accessories For All Systems

---



---

Good roofing practice allows penetration movement independent of the roof. This requires a flexible seal at the penetration and proper attachment to the roof. With the complexity and assortment of roofing systems available today, a variety of designs is required to work with all conditions. A good flashing system must be versatile-economical-maintenance free-simple to install-adapt to multiple penetrations and angle irons-yet, have uniformity allowing fast, easy installation and specification. All components must be weather resistant, approved by the industry and above all, eliminate roof leaks. **For these reasons, Portals Plus offers you the following products:**

## Realistic Answers

### Advantages

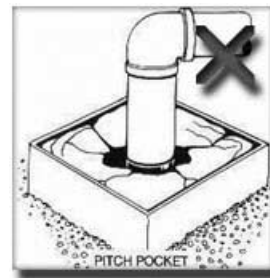
- Allows penetration movement
- Maintenance free
- Economical and uniform
- Accommodates multiple projections
- No need to disconnect lines
- Eliminates leaks
- Permanent
- Simple and fast to install



## Sources of Trouble

### Disadvantages

- Very costly
- Pipe projection not sealed
- Limited pipe direction
- Does not allow for movement
- Temporary seal
- Continual maintenance
- Major cause of roof damage



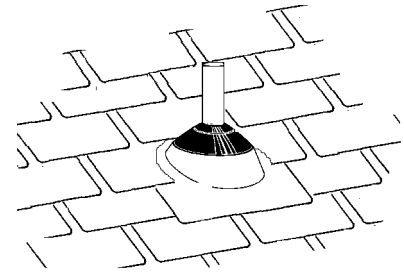
Roof leaks are the biggest problem of architects and building owners. 85% of all roof leaks occur at penetrations and corner flashings due to poor details which fail to accommodate movement. Extreme roof temperature changes require durable and flexible flashings. High labor costs and no industry standards allow for poor workmanship and nonfunctional field fabricated flashings. The contractor' "good enough" attitude creates temporary expedients at the owner's expense.

National Roofing Contractors Association states: "Pitch pockets or pans by their design, are not intended to be continuously watertight. Their use should not be encouraged since better methods are available to accomplish the same end. Pitch pans or pockets require frequent inspection and maintenance, and usually a great deal of damage can occur before the leak around a pitch pocket or pan is evident."

## Shingle Flashing Systems

### Galvanized Flashing Base w/elastomeric collar

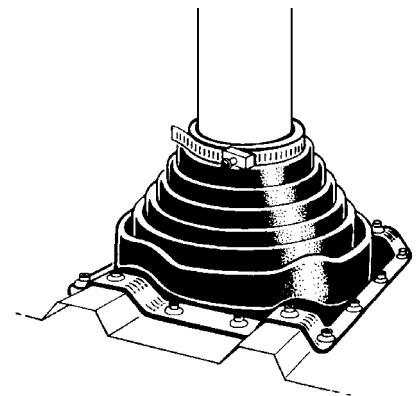
Portals Plus Shingle Flashings are designed to effectively seal round pipe penetrations, from 1.25" through 4", penetrating shingle roofing systems at up to 40° slopes. The seal is an elastomeric collar integrally locked into a rigid base which remains flat on the roof. Bases are available in 24 gauge galvanized steel. Installation is easy - the Shingle Flashing slips over the pipe and automatically seals to the pipe at the correct roof angle. Pipes can be all types, including copper, cast iron, plastic, aluminum, and galvanized. Shingle Flashings are rated to 180°F continuous heat. All Portals Plus Shingle Flashings are listed by UPC, SBC, and BOCA-the three major national codes. Shingle Flashings are available to fit the following nominal pipe sizes: 1.25"-1.5", 2", 3", 4".



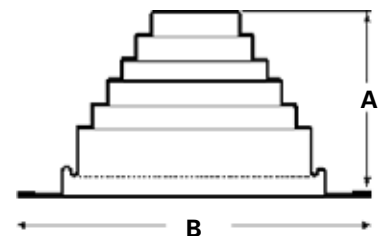
ServiceFirst Item #	Mfg #	Size	Case Qty.
BAS01844	85009	1.25" -1.50"	12
BAS01845	85019	2"	12
BAS01846	85029	3"	12
BAS01847	85039	4"	12

## Deck Mates

The Portals Plus Deck-Mate is designed to work in conjunction with any configuration of corrugated metal roof. The Deck-Mate is engineered so the aluminum flanged base bends to any contours, roof irregularities, or pitches. The Deck-Mate seals watertight to the roof panel with an approved sealant and standard roofing fasteners.

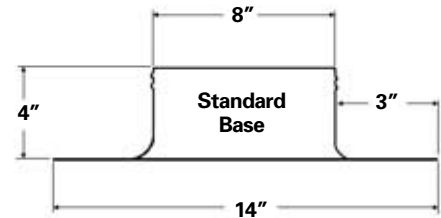


ServiceFirst Item #	Mfg#	Old Mfg#	Description	A	B	Case Qty
BAS01853	81036	T003	D.M. 3 1/4"-4"	4"	8"	15
BAS01854	81050	T005	D.M. 5 4"-7"	5"	11"	10
BAS01855	81085	T008	D.M. 8 7"-13"	6"	17"	5
BAS01856	81101	T010	D.M. 10 13"-26"	8"	34"	1

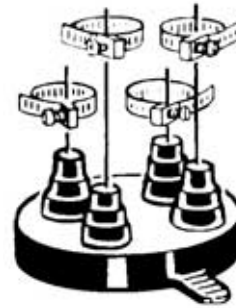


## Alumi-Flash Systems

The Portals Plus Alumi-Flash is compatible with all types of roof systems and makes pitch pans obsolete. Due to the flexibility of the EPDM rubber caps, roof leaks are eliminated because penetrations are allowed to expand, contract, and vibrate independently of the waterproofing. The caps are molded EPDM (Ethylene Propylene Diene Monomer) rubber which is compounded to resist degradation due to oxidation or exposure to ozone and ultraviolet rays, while having a serviceable temperature range of -60°F to +270°F. The caps are mechanically sealed to the Alumi-Flash base with a double "Weather-Tite Pressure Seal", which consists of two (2) beads formed into the collar that mate with the double grooves on the inside of the caps. The base must be roofed in, using good roofing practices. Together, the cap and base provide a permanent, watertight and maintenance free means for penetrating roofs that is simple and easy to install.



Standard Base w/C-212 Cap



C-212  
2 - .375" TO 1" PIPES  
2 - 1" TO 2" PIPES

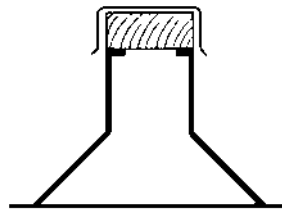
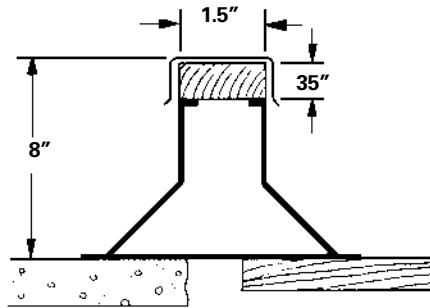


C-126  
1 - 2" TO 6" PIPE

ServiceFirst Item #	Mfg#	Old Mfg#	Description	Case Qty
BAS01848	22015	A001	w/126 black cap	5
BAS01849	22025	A002	w/212 black cap	5

## Equipment Rails

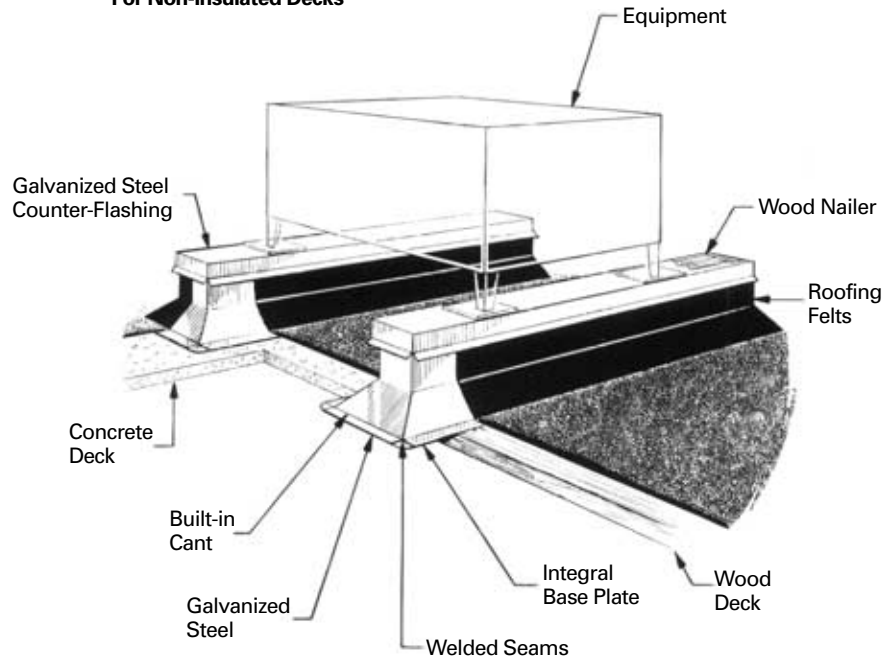
Equipment Rails are prefabricated sheet steel structural members designed for all types of roof systems. Provides a uniform mounting pedestal for condensers, blowers, and other roof mounted equipment. Manufactured in 3 ft., 4 ft., and 6 ft. lengths to match the equipment and to span the proper number of roof joists. Equipment Rails have a high bearing capacity attained by a system of internal gussets welded into position at specific intervals along the length of the rails. A continuous wood nailer covered by a removable counterflashing provides for an effective method of attaching roofing felts and assuring a watertight installation. Replaces inadequate railroad ties, costly pipe stubs, and leaky pitch pockets.



**ER-3A**  
For Non-Insulated Decks

### Equipment Rail Loading Chart

Style	ER-3A
Width & Height	3.5" x 8"
Maximum Allowable Concentrated Load	1450 lbs.
Maximum Allowable End Reaction	1700 lbs.
Maximum Allowable Intermediate Reaction	1450 lbs.
Maximum Allowable Uniform Load	450 lb/ft

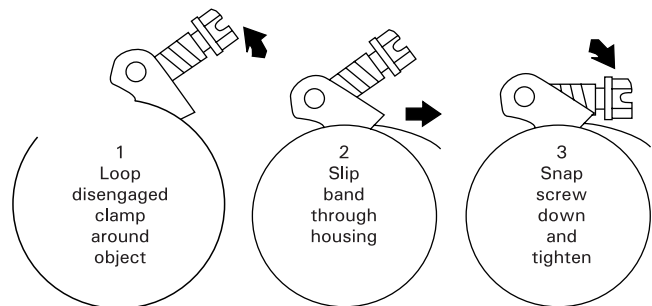
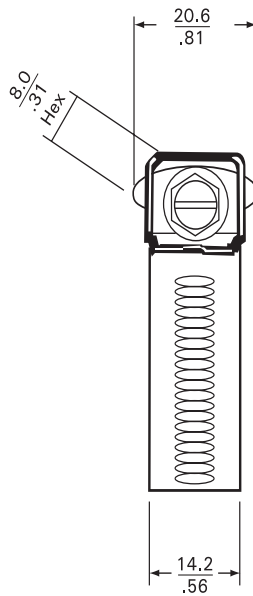
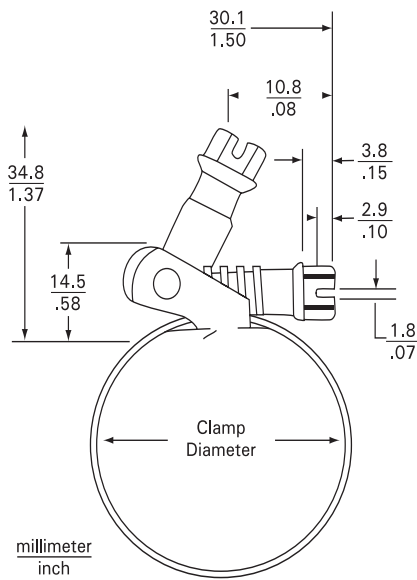


### 2x4 Nailer & 18 ga. galv. Cap standard

ServiceFirst Item #	Mfg#	Description	Qty
BAS01850	35331	8" high x 3 feet long	1
BAS01851	35341	8" high x 4 feet long	1
BAS01852	35361	8" high x 6 feet long	1

## Stainless Steel Clamps - For All Systems

Stainless steel band with exclusive hinged worm gear speeds the installation of flexible ductwork, hoses, and all installations requiring clamps for positive sealing. Clamps can easily be joined end-to-end to create even larger sizes!



### Stainless Snaplock Clamps (Bulk Package)

ServiceFirst Item #	Mfg#	Old Mfg#	Size	Package Qty
CMP00925	49008	M001	3/4"- 1-3/4"	50
CMP00926	49018	M002	7/8"- 2-3/4"	50
CMP00927	49048	M003	2"- 7"	50
CMP00928	49068	M006	1-3/4"- 15"	25

# Cross Reference

SF # to MFG #			MFG # to SF #		
SF #	MFG #	Page #	MFG #	SF #	Page #
BAS01844	85009	3	22015	BAS01848	4
BAS01845	85019	3	22025	BAS01849	4
BAS01846	85029	3	35331	BAS01850	5
BAS01847	85039	3	35341	BAS01851	5
BAS01848	22015	4	35361	BAS01852	5
BAS01849	22025	4	49008	CMP00925	6
BAS01850	35331	5	49018	CMP00926	6
BAS01851	35341	5	49048	CMP00927	6
BAS01852	35361	5	49068	CMP00928	6
BAS01853	81036	3	81036	BAS01853	3
BAS01854	81050	3	81050	BAS01854	3
BAS01855	81085	3	81085	BAS01855	3
BAS01856	81101	3	81101	BAS01856	3
CMP00925	49008	6	85009	BAS01844	3
CMP00926	49018	6	85019	BAS01845	3
CMP00927	49048	6	85029	BAS01846	3
CMP00928	49068	6	85039	BAS01847	3



**American Standard Inc.**  
3600 Pammel Creek Road  
La Crosse, WI 54601-7599

---

Literature Order Number	RSP-PRC013-EN
Filing Hierarchy	HVAC Supplies & Accessories
Product Designator	Repair Service Parts (RSP)
Literature Type	Product Catalog
Sequence	013
Language	English (EN)
Date (Month and Year)	October 2001
Supersedes	New
Stocking Location	La Crosse

*Since American Standard has a policy of continuous product and product data improvement, it reserves the right to change design and specifications without notice.*