



TRANE Supply

*Residential
Installation Solutions*



Product availability may vary by region.

Flexible Duct	3-5	Filter Housing	14
Bagged & Boxed Silver Flex	3	Transitions	14
Bagged & Boxed Black Flex	3	Plenums	15
Bagged & Boxed Grey Flex.....	4	Grilles & Diffusers	16
Mobile Home Flex	5	Registers	17-20
Duct Accessories	5	Steel Curved & Straight	
AHU Hanging Solutions	5-7	Blade Registers.....	17-19
Unistrut.....	5	Steel 2-Way & 3-Way Registers	19-20
Combo Nut Washer	5	Floor Registers	21-22
Buzznut	5	Steel Toe Kick	21
Cush-Clamps.....	5	Steel Floor Registers.....	21-22
Beam Clamps & Connectors.....	7	Return Grilles	22-25
Threaded Rod	7	Steel Return Air Grilles	22-25
Slotted Angle	7	Steel Return Air Filter Grilles	25
Nuts & Washers	7	Steel Baseboard Return Grilles.....	25
Metal Products	8-13	Light Commercial Products	26-28
Foil Top Boxes & Collars	8	Steel Return Air Filter Grilles	26
CRDA Fire Damper Box	8	Steel 4-way Diffusers	26-27
Straight Regular Boot.....	8	Steel Vertical Fin Registers.....	27
Elbow Boot	8	Galvanized Steel Ring Collar.....	27
Collars, Duct Connectors & Dampers.....	9	Round Butterfly Dampers.....	28
Return Air Boxes	9	Unit Mounting	28-33
Metal Start Collar Crimped.....	9	Equipment Pads.....	28-29
DS Hanging Straps.....	10	Air Handler Block.....	30
Cleats.....	10	Anti Vibration Pads.....	30
Linecovers	10	Heat Pump Risers	30
Air Handler Stands.....	11	Mounting Brackets & Stands.....	30
Drain Pans	11	Isolators.....	31
Snap-Lock Pipe	11	Duct Hanging Products	32
Tees.....	11	Metal Strap.....	32
Reducers	11	Webbed & Panduit Strap	32
Takeoffs.....	12	Tapes & Adhesives	32-33
Bull-Nose Wyes	12	Metal Tapes	32
Elbows.....	12	Insulation and Tapes	33
125SD Rect Duct	13	Caulking Products and Sealants.....	33
331 Sqr/Rd	13	Mastic Brushes.....	33



Electrical.....	34-35
Disconnects Pre-Made Whips	34
Liquid-Tite Connectors.....	34
Liquid-Tite Conduit	34
EZ-IN Cable & Connector	35
Fuses.....	35
Contactors	35
Copper Fittings	36-37
Rolled Stop Couplings.....	36
Reducing Couplings	36
90° Long Radius Elbow	36
90° Long Radius Street Elbow	36
Reducing Fittings.....	36
45° Elbow	37
Tees.....	37
Copper Tubing	37-39
Soft Copper Rolls	37
ACR Copper	38
Pre-Charged Linesets	38
HVAC Linesets	39
Tubing Insulation	39
Linesets & Connectors	40-41
Standard Plain End Linesets.....	40
Refrigerant Line Connectors.....	40
Line Set Protection.....	41
Thermostat Wire	41
PVC Pipe & Fittings	42
PVC Fittings	42
PVC Pipe PVC Glues & Cleaners	42
Condensate Switches	43-44
Safe-T-Switch®	43
AquaGuard.....	43
Wet Switch	43
Overflow Safety Switches	44

Condensate Pumps	44-45
Classic Style	44
NXTGen Premium	44
Ductless Pumps.....	45
Accessories	45
Tools & Accessories	45-46
Air Purification.....	46-47
Guardian Air PHI.....	46
Guardian Air REME.....	46
Guardian Air Plug-In, Mini and PTAC.....	47
Mini Split PHI & Magnetic Pkg PHI.....	47
UV Stick Light	47
Bi-Polar Ionizers	47
UV Sanitation	48
Drain Cleaner	48
Fin Saver.....	48
Ductboard	49
Duct Wrap	49
Duct Liner	50



Flexible Duct



Silver 25' Bagged Jacket

Size	R4.2 Part #	R6 Part #	R8 Part #
4"	13002404	13602404	13102404
5"	13002405	13602405	13102405
6"	13002406	13602406	13102406
7"	13002407	13602407	13102407
8"	13002408	13602408	13102408
9"	13002409	13602409	13102409
10"	13002410	13602410	13102410
12"	13002412	13602412	13102412
14"	13002414	13602414	13102414
16"	13002416	13602416	13102416
18"	13002418	13602418	13102418
20"	13002420	NA	NA

Silver 25' Boxed Jacket

Size	R4.2 Part #	R6 Part #	R8 Part #
4"	13002504	13602504	13102504
5"	13002505	13602505	13102505
6"	13002506	13602506	13102506
7"	13002507	13602507	13102507
8"	13002508	13602508	13102508
9"	13002509	13602509	13102509
10"	13002510	13602510	13102510
12"	13002512	13602512	13102512
14"	13002514	13602514	13102514
16"	13002516	13602516	13102516
18"	13002518	13602518	13102518
20"	13002520	13602520	13102520



Black 25' Bagged Jacket

Size	R4.2 Part #	R6 Part #	R8 Part #
4"	08002404	08602404	08802404
5"	08002405	08602405	08802405
6"	08002406	08602406	08802406
7"	08002407	08602407	08802407
8"	08002408	08602408	08802408
9"	08002409	08602409	08802409
10"	08002410	08602410	08802410
12"	08002412	08602412	08802412
14"	08002414	08602414	08802414
16"	08002416	08602416	08802416
18"	08002418	08602418	08802418
20"	08002420	NA	NA

Black 25' Boxed Jacket

Size	R4.2 Part #	R6 Part #	R8 Part #
4"	08002504	08602504	08802504
5"	08002505	08602505	08802505
6"	08002506	08602506	08802506
7"	08002507	08602507	08802507
8"	08002508	08602508	08802508
9"	08002509	08602509	08802509
10"	08002510	08602510	08802510
12"	08002512	08602512	08802512
14"	08002514	08602514	08802514
16"	08002516	08602516	08802516
18"	08002518	08602518	08802518
20"	08002520	08602520	NA

Flexible Duct



Grey 25' Bagged Jacket

Size	R4.2 Part #	R6 Part #	R8 Part #
4"	17002404	17602404	17802404
5"	17002405	17602405	17802405
6"	17002406	17602406	17802406
7"	17002407	17602407	17802407
8"	17002408	17602408	17802408
9"	17002409	17602409	17802409
10"	17002410	17602410	17802410
12"	17002412	17602412	17802412
14"	17002414	17602414	17802414
16"	17002416	17602416	17802416
18"	17002418	17602418	17802418
20"	17002420	17602520	17802520

Grey 25' Boxed Jacket

Size	R4.2 Part #	R6 Part #	R8 Part #
4"	17002504	17602504	17802504
5"	17002505	17602505	17802505
6"	17002506	17602506	17802506
7"	17002507	17602507	17802507
8"	17002508	17602508	17802508
9"	17002509	17602509	17802509
10"	17002510	17602510	17802510
12"	17002512	17602512	17802512
14"	17002514	17602514	17802514
16"	17002516	17602516	17802516
18"	17002518	17602518	17802518
20"	17002520	17602520	17802520

Bag Direct Ship Quantities

Size	R 4.2		R6		R8	
	Skid Layer	Full Skid	Skid Layer	Full Skid	Skid Layer	Full Skid
4"	30	150	25	125	25	100
5"	25	125	25	125	25	100
6"	25	125	20	100	16	80
7"	20	100	16	80	16	80
8"	16	80	16	80	16	80
9"	16	80	12	60	9	45
10"	12	60	9	45	9	45
12"	9	45	9	45	6	30
14"	6	30	6	30	6	30
16"	6	30	6	30	6	30
18"	4	20	4	20	4	20
20"	4	20	4	20	4	20



*R4 & R6 only (5 layers). R8 has 4 layers per skid

Flexible Duct

Mobile Home Flex

• 25' Boxes



Size	R4.2 Part #	R6 Part #	R8 Part #
6"	04002506	NA	04802506
8"	04002508	04602508	04802508
10"	04002510	04602510	04802510
12"	04002512	04602512	04802512
14"	04002514	04602514	04802514

Mobile home ducts are used primarily as a supply or return duct of a HVAC system of a mobile or modular home. It is jacketed with a heavy duty black polyethylene vapor barrier which meets the HUD requirements for outdoor mobile home or modular home applications.

Duct Accessories

Part #	Mfg #	Description	Pack Qty.
BRZZIP-EZ	BRZZIP-EZ	WASHER; ZIP-EZ INSULATION FASTENERS	
SCR01946	5-SCR82BULK	SCREW; SHEET METAL SCREW, 8 X 2 TAPER POINT	3000 Bulk Pack
SCR01944	5-SCR82	SCREW; SHEET METAL SCREW, 8 X 2 TAPER POINT	350 (jar)

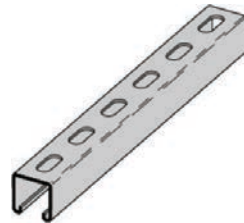
AHU Hanging Solutions

FASTENAL



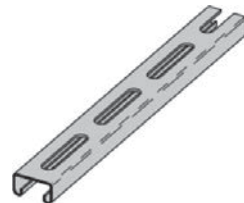
Deep Unistrut

Part #	Gauge	Style	Length
STR01731	12GA.	DEEP (1-5/8")	10'
STR01732	14GA.	DEEP (1-5/8")	10'



Shallow Unistrut

Part #	Gauge	Style	Length
STR01733	14GA.	SHALLOW (13/16")	10'



*Many more sizes and styles available!
Please contact your local Trane Supply store.*

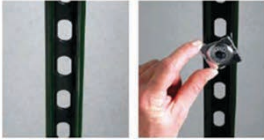


TRANE Supply

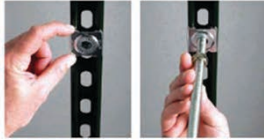
Residential Installation Solutions

Strut Systems

Combo Nut Washer



1. Position combo nut into channel and rotate clockwise as nut seats in channel.



2. Slide combo nut into the desired location in the channel and insert threaded rod into nut. (Combo nut locks at 90 degree angle).

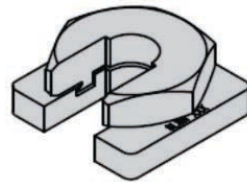


3. Thread the rod up through the nut and lock into place with hex nut. Rod is now ready for products to be installed.

Part#	Thread Size
WAS01314	3/8" x 16

Buzznut

- Design combines washer and lock nut
- Helps reduce installation time by up to 42%
- Installs anywhere along all threaded rod (ATR)
- Eliminates threading hex up the length of ATR
- Easily removed and adjusted
- Ideal to retro-fit a trapeze without disassembling existing supports
- Replaces jam nuts in high vibratory applications



Part#	Thread Size
NUT01336	3/8" x 16

Cush-Clamps

VibraClamp™ Pipe Clamps

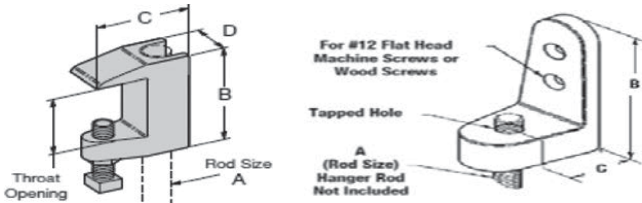
Part #	Tubing O.D.
CMP01571	1/4"
CMP01562	3/8"
CMP01563	1/2"
CMP01564	5/8"
CMP01565	3/4"
CMP01566	7/8"
CMP01567	1-1/8"
CMP01568	1-3/8"
CMP01569	1-5/8"
CMP01570	2-1/8"

- BVT Series VibraClamp - Copper and O.D.
- Safety Factor of 3
- Accesses tubing sizes 1/8" (3) to 6" (150)
- Allows easy one tool installation
- Endures high (+300°F) and low (-40°F) temps
- Dampens vibration and noise
- Eliminates galvanic metal to metal contact
- Resists most industrial oils and solvents
- Reduces thermal loss and gain
- Secures tubing firmly to channel (strut)
- Dielectric strength of 400 volts/mil
- Includes cushion, clamp, screw and nut



Strut Systems

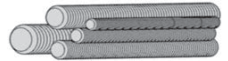
Beam Clamps & Connectors



Part #	Description	Size	B	C	D	Opening
CMP01560	WIDE JAW WEDGE C-CLAMP	3/8" x 16	2-1/4"	2"	1-1/8"	1-1/4"
CMP01561	WEDGE C-CLAMP	3/8" x 16	1-5/8"	2"	7/8"	3/4"

Threaded Rod

Part #	Size Threads per Inch Length
ROD01466	3/8"-16 X 6 FT ASTM F593 GR 316 STAINLESS STEEL THREADED ROD



Slotted Angle

Part #	Size Threads per Inch Length
ANG02126	14GA. 1-5/8" X 1-5/8" 10'



Nuts & Washers

Part #	Description	Pack Qty.
NUT01337	3/8" HEX NUT	25
WAS01315	3/8" FLAT WASHERS	37
WAS01316	3/8" FLAT WASHERS	134
WAS01317	3/8" LOCK WASHERS	38



Metal Products

Gray Metal Products Inc.

Gray Metal South, Inc.

Snap-Rite
Manufacturing, Inc.
A GRAY CO.



Foil Top Boxes & Collars



- Boot w/ integrated collar
- R6.0 Insulation
- Metal Top
- Sealed

Part #	Box Size	Collar Size
08X04X043600F	8" x 4"	4"
08X04X053600F	8" x 4"	5"
10X06X063600F	10" x 6"	6"
10X06X073600F	10" x 6"	7"
12X06X063600F	12" x 6"	6"
12X06X073600F	12" x 6"	7"
12X08X083600F	12" x 8"	8"
14X08X083600F	14" x 8"	8"

Many more sizes and styles available!
Please contact your local Trane Supply store.



CRDA Fire Damper Box

Part #	Box Size
08X04X04CRDA-A	08X04X04 R6 MTI S-O FIREDPR BX
08X04X05CRDA-A	08X04X05 R6 MTI S-O FIREDPR BX
10X06X06CRDA-A	10X06X06 R6 MTI S-O FIREDPR BX
10X06X07CRDA-A	10X06X07 R6 MTI S-O FIREDPR BX
12X06X06CRDA-A	12X06X06 R6 MTI S-O FIREDPR BX
12X06X07CRDA-A	12X06X07 R6 MTI S-O FIREDPR BX
12X06X08CRDA-A	12X06X08 R6 MTI S-O FIREDPR BX
12X06X09CRDA-A	12X06X09 R6 MTI S-O FIREDPR BX
12X12X07CRDA-A	12X12X07 R6 MTI S-O FIREDPR BX
12X12X09CRDA-A	12X12X09 R6 MTI S-O FIREDPR BX
10X06X06CRDA-C	10X06X06 R6 FTI S-O FIREDPR BX
10X06X06CRDA-E	10X06X06 R6 MTI T-O FIREDPR BX
10X10X06CRDA-E	10X10X06 R6 MTI T-O FIREDPR BX
12X12X08CRDA-E	12X12X08 R6 MTI T-O FIREDPR BX
12X12X10CRDA-E	12X12X10 R6 MTI T-O FIREDPR BX

Straight Regular Boots



Elbow Boots



Part #	Box Size
10X4X6-110R	10X04X06 STRAIGHT REG BOOT
10X6X4-110R	10X06X04 STRAIGHT REG BOOT
10X6X6-110R	10X06X06 STRAIGHT REG BOOT
12X4X6-110R	12X04X06 STRAIGHT REG BOOT
12X6X6-110R	12X06X06 STRAIGHT REG BOOT
12X8X8-110R	12X08X08 STRAIGHT REG BOOT
14X4X6-110R	14X04X06 STRAIGHT REG BOOT
14X6X6-110R	14X06X06 STRAIGHT REG BOOT
14X6X7-110R	14X06X07 STRAIGHT REG BOOT
14X6X8-110R	14X06X08 STRAIGHT REG BOOT

Part #	Box Size
10X4X6-113R	10X04X06 90 ELBOW BOOT
10X6X4-113R	10X06X04 90 ELBOW BOOT
10X6X6-113R	10X06X06 90 ELBOW BOOT
12X4X6-113R	12X04X06 90 ELBOW BOOT
12X6X6-113R	12X06X06 90 ELBOW BOOT
12X8X8-113R	12X08X08 90 ELBOW BOOT
14X4X6-113R	14X04X06 90 ELBOW BOOT
14X6X6-113R	14X06X06 90 ELBOW BOOT
14X6X7-113R	14X06X07 90 ELBOW BOOT
14X6X8-113R	14X06X08 90 ELBOW BOOT



Metal Products

Gray Metal Products Inc.

Gray Metal South, Inc.

Snap-Rite Manufacturing, Inc.

Collars, Duct Connectors & Dampers

DB Snapped Collars



Part #	Size
04-404DCC	4"
05-404DCC	5"
06-404DCC	6"
07-404DCC	7"
08-404DCC	8"
09-404DCC	9"
10-404DCC	10"
12-404DCC	12"
14-404DCC	14"
16-404DCC	16"
18-404DCC	18"
20-404DCC	20"

Flex Connectors



Part #	Size
06-SCCBD	6"
07-SCCBD	7"
08-SCCBD	8"
09-SCCBD	9"
10-SCCBD	10"
12-SCCBD	12"
14-SCCBD	14"
16-SCCBD	16"

Double Quad Dampers



Part #	Size
04-314DQ	4"
05-314DQ	5"
06-314DQ	6"
07-314DQ	7"
08-314DQ	8"
09-314DQ	9"
10-314DQ	10"
12-314DQ	12"
14-314DQ	14"

Return Air Boxes

- R6.0 Insulation
- Return air boxes are oversized by 1/2" to accommodate filter grilles



Part #	Box Size
10.5X10.5-3800F	10" x 10"
12.5X12.5-3800F	12" x 12"
14.5X14.5-3800F	14" x 14"
16.5X16.5-3800F	16" x 16"
18.5X18.5-3800F	18" x 18"
24.5X18.5-3800F	18" x 24"
20.5X20.5-3800F	20" x 20"
25.5X20.5-3800F	20" x 25"
24.5X24.5-3800F	24" x 24"

Metal Start Collar Crimped



Part #	Box Size
03-313-SE	03 Start Collar Crimped
04-313-SE	04 Start Collar Crimped
05-313-SE	05 Start Collar Crimped
06-313-SE	06 Start Collar Crimped
07-313-SE	07 Start Collar Crimped
08-313-SE	08 Start Collar Crimped
09-313-SE	09 Start Collar Crimped
10-313-SE	10 Start Collar Crimped
12-313-SE	12 Start Collar Crimped
14-313-SE	14 Start Collar Crimped
16-313-SE	16 Start Collar Crimped
18-313-SE	18 Start Collar Crimped
20-313-SE	20 Start Collar Crimped

Metal Products

Gray Metal Products Inc.

Gray Metal South, Inc.

Snap-Rite Manufacturing, Inc.

DS Hanging Straps

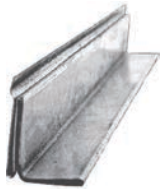


Part #	Box Size
01DS22	01 22GA DUCT STRAP (100')
01DS26	01 26GA DUCT STRAP (100')
01DS30	01 30GA DUCT STRAP (100')
01.5DS22	1 ½ 22GA DUCT STRAP (100')
01.5DS26	1 ½ 26GA DUCT STRAP (100')
01.5DS30	1 ½ 30GA DUCT STRAP (100')
02DS22	02 22GA DUCT STRAP (100')
02DS26	02 26GA DUCT STRAP (100')
02DS30	02 30GA DUCT STRAP (100')



S-Locks Flat S Cleats

Part #	Box Size
120-24-324	120 24GA FLAT S CLEAT
06-324	06 FLAT S CLEAT
08-324	08 FLAT S CLEAT
10-324	10 FLAT S CLEAT
12-324	12 FLAT S CLEAT
14-324	14 FLAT S CLEAT
16-324	16 FLAT S CLEAT
60-26-324	60 26GA FLAT S CLEAT
120-26-324	120 26GA FLAT S CLEAT



Standing S Cleats

Part #	Box Size
120-24-324S	120 24GA ½ STANDING S CLEAT
60-26-324S	60 26GA ½ STANDING S CLEAT
120-26-324S	120 26GA ½ STANDING S CLEAT
120-24-324-1S	120 24GA 1 STANDING S CLEAT
60-26-324-1S	60 26GA 1 STANDING S CLEAT
120-26-324-1S	120 26GA 1 STANDING S CLEAT

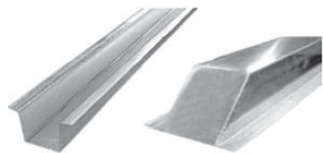


Drive Cleats

Part #	Box Size
06-DRIVE	06 DRIVE CLEAT
08-DRIVE	08 DRIVE CLEAT
10-DRIVE	10 DRIVE CLEAT
12-DRIVE	12 DRIVE CLEAT
14-DRIVE	14 DRIVE CLEAT
16-DRIVE	16 DRIVE CLEAT
60-26-DRIVE	60 26GA DRIVE CLEAT
120-26-DRIVE	120 26GA DRIVE CLEAT
60-24-DRIVE	60 24GA DRIVE CLEAT
120-24-DRIVE	120 24GA DRIVE CLEAT

Linecovers

Part #	Dimensions	Length	Cap
LC458	4" X 5" X 4"	8'	NONE
LC458-CAP-A	4" X 5" X 4"	8'	ANGLED
LC4510	4" X 5" X 4"	10'	NONE
LC4510-CAP-A	4" X 5" X 4"	10'	ANGLED



Metal Products

Gray Metal Products, Inc.

Gray Metal South, Inc.

Snap-Rite Manufacturing, Inc.

Air Handler Stands

- Adjusts from 16" - 27" widths and 17" to 29" depths
- Powder-coat paint for superior finish
- Flush corners for tight closets
- Filter slot with gasket
- 500 lb. capacity



Part #	Height	Depth	Width
18-AHS	18"	17" - 29"	16" - 27"
30-AHS	30"	17" - 29"	16" - 27"

Snap-Lock Pipe



Part #	Diameter	Length	Gauge
04-26-301UB	4"	60"	26GA.
05-26-301UBBD	5"	60"	26GA.
06-26-301UBBD	6"	60"	26GA.
07-26-301UBBD	7"	60"	26GA.
08-26-301UBBD	8"	60"	26GA.
09-26-301BD	9"	60"	26GA.
10-26-301BD	10"	60"	26GA.
12-26-301BD	12"	60"	26GA.
14-26-300BBD	14"	36"	26GA.
16-26-300BBD	16"	36"	26GA.



Tees

Part #	Description
06-304	6" X 6" X 6" STRAIGHT TEE
08-304	8" X 8" X 8" STRAIGHT TEE
10-304	10" X 10" X 10" STRAIGHT TEE
12-304	12" X 12" X 12" STRAIGHT TEE
14-304	14" X 14" X 14" STRAIGHT TEE

Drain Pans



Part #	Size Gauge	Gauge
24X24DP26	24" x 24"	26 GAUGE
26X26DP26	26" x 26"	26 GAUGE
26X40DP26	26" x 40"	26 GAUGE
26X48DP26	26" x 48"	26 GAUGE
26X52DP26	26" x 52"	26 GAUGE
26X56DP26	26" x 56"	26 GAUGE
26X62DP26	26" x 62"	26 GAUGE
26X68DP26	26" x 68"	26 GAUGE
28X48DP26	28" x 48"	26 GAUGE
28X54DP26	28" x 54"	26 GAUGE
28X58DP26	28" x 58"	26 GAUGE
28X60DP26	28" x 60"	26 GAUGE
30X60DP26	30" x 60"	26 GAUGE
30X66DP26	30" x 66"	26 GAUGE

*Many more sizes and styles available!
Please contact your local Trane Supply store.*



Reducers

Part #	Description
10X08-311P	10" X 8" PLAIN TAPERED REDUCER
10X09-311P	10" X 9" PLAIN TAPERED REDUCER
12X10-311P	12" X 10" PLAIN TAPERED REDUCER
14X12-311P	14" X 12" PLAIN TAPERED REDUCER
16X14-311P	16" X 14" PLAIN TAPERED REDUCER
06X04-311P	6" X 4" PLAIN TAPERED REDUCER
06X05-311P	6" X 5" PLAIN TAPERED REDUCER
07X06-311P	7" X 6" PLAIN TAPERED REDUCER
08X06-311P	8" X 6" PLAIN TAPERED REDUCER
08X07-311P	8" X 7" PLAIN TAPERED REDUCER
09X08-311P	9" X 8" PLAIN TAPERED REDUCER

Metal Products

Gray Metal Products Inc.

Gray Metal South, Inc.

Snap-Rite Manufacturing, Inc.

Adhesive Flat Takeoffs



Part #	Size
04-400-A	04 A/T FLAT TAKEOFF PLAIN
05-400-A	05 A/T FLAT TAKEOFF PLAIN
06-400-A	06 A/T FLAT TAKEOFF PLAIN
07-400-A	07 A/T FLAT TAKEOFF PLAIN
08-400-A	08 A/T FLAT TAKEOFF PLAIN
09-400-A	09 A/T FLAT TAKEOFF PLAIN
10-400-A	10 A/T FLAT TAKEOFF PLAIN
12-400-A	12 A/T FLAT TAKEOFF PLAIN
14-400-A	14 A/T FLAT TAKEOFF PLAIN
16-400-A	16 A/T FLAT TAKEOFF PLAIN
18-400-A	18 A/T FLAT TAKEOFF PLAIN
20-400-A	20 A/T FLAT TAKEOFF PLAIN

Bull-Nose Wyes



Part #	Description
04X04X04-307	4" X 4" X 4" STRAIGHT WYE
06X06X06-307	6" X 6" X 6" STRAIGHT WYE
08X06X06-307	8" X 6" X 6" REDUCING WYE
12X10X10-307	12" X 12" X 12" REDUCING WYE
14X12X12-307	14" X 12" X 12" REDUCING WYE

Adhesive Saddle Takeoffs



Part #	Size
04-406-A	04 A/T SADDLE TAKEOFF PLAIN
05-406-A	05 A/T SADDLE TAKEOFF PLAIN
06-406-A	06 A/T SADDLE TAKEOFF PLAIN
07-406-A	07 A/T SADDLE TAKEOFF PLAIN
08-406-A	08 A/T SADDLE TAKEOFF PLAIN
09-406-A	09 A/T SADDLE TAKEOFF PLAIN
10-406-A	10 A/T SADDLE TAKEOFF PLAIN
12-406-A	12 A/T SADDLE TAKEOFF PLAIN
14-406-A	14 A/T SADDLE TAKEOFF PLAIN
16-406-A	16 A/T SADDLE TAKEOFF PLAIN
18-406-A	18 A/T SADDLE TAKEOFF PLAIN
20-406-A	20 A/T SADDLE TAKEOFF PLAIN

Elbows

- Shipped straight



Part #	Diameter
04-26-302ST	4"
06-26-302ST	6"
08-26-302ST	8"
10-26-302ST	10"
12-26-302ST	12"
14-26-302ST	14"
16-26-302ST	16"

This is only a small sample of metal products available for Metal Products from Snap-Rite, Gray Metal, and Gray Metal South. Please consult your local Trane Supply store for additional products, styles, and sizes



Metal Products

Gray Metal Products Inc.

Gray Metal South, Inc.

Snap-Rite
Manufacturing, Inc.



125SD Rect Duct

Part #	Size
08X8X48-125SDR	08X08X48 DUCT CROSS BROKEN
10X8X48-125SDR	10X08X48 DUCT CROSS BROKEN
12X8X48-125SDR	12X08X48 DUCT CROSS BROKEN
14X8X48-125SDR	14X08X48 DUCT CROSS BROKEN
16X8X48-125SDR	16X08X48 DUCT CROSS BROKEN
24X8X48-125SDR	24X08X48 DUCT CROSS BROKEN
26X8X48-125SDR	26X08X48 DUCT CROSS BROKEN
28X8X48-125SDR	28X08X48 DUCT CROSS BROKEN
30X8X48-125SDR	30X08X48 DUCT CROSS BROKEN
10X10X48-125SDR	10X10X48 DUCT CROSS BROKEN
12X10X48-125SDR	12X10X48 DUCT CROSS BROKEN
14X10X48-125SDR	14X10X48 DUCT CROSS BROKEN
16X10X48-125SDR	16X10X48 DUCT CROSS BROKEN
24X10X48-125SDR	24X10X48 DUCT CROSS BROKEN
26X10X48-125SDR	26X10X48 DUCT CROSS BROKEN
28X10X48-125SDR	28X10X48 DUCT CROSS BROKEN
30X10X48-125SDR	30X10X48 DUCT CROSS BROKEN



331 Sqr/Rd

Part #	Size
06X4X6-331	06X04X06 SQ/RD TRAN
06X6X6-331	06X06X06 SQ/RD TRAN
08X6X8-331	08X06X08 SQ/RD TRAN
09X9X7-331	09X09X07 SQ/RD TRAN
10X10X8-331	10X10X08 SQ/RD TRAN
10X8X10-331	10X08X10 SQ/RD TRAN
12X16X14-331	12X16X14 SQ/RD TRAN
12X20X14-331	12X20X14 SQ/RD TRAN
14X14X14-331	14X14X14 SQ/RD TRAN
14X16X16-331	14X16X16 SQ/RD TRAN
14X16X18-331	14X16X18 SQ/RD TRAN
14X22X14-331	14X22X14 SQ/RD TRAN
16X18X16-331	16X18X16 SQ/RD TRAN
20X14X14-331	20X14X14 SQ/RD TRAN
20X14X16-331	20X14X16 SQ/RD TRAN
20X16X14-331	20X16X14 SQ/RD TRAN



Filter Housing



Part #	Mfg #	Description
HUS03524	ACG1425-3	HOUSING, FILTER, ACCOMODATOR, FOR 14 X 25 FILTER
HUS03520	ACG1425-6	HOUSING, FILTER, ACCOMODATOR, FOR 14 X 25 FILTER
HUS03525	ACG1625-3	HOUSING, FILTER, ACCOMODATOR, 16 X 25 FILTER
HUS03521	ACG1625-6	HOUSING, FILTER, ACCOMODATOR, FOR 16 X 25 FILTER
HUS03526	ACG2025-3	HOUSING, FILTER, ACCOMODATOR, FOR 20 X 25 FILTER
HUS03522	ACG2025-6	HOUSING, FILTER, ACCOMODATOR, FOR 20 X 25 FILTER
HUS03527	ACG2424-3	HOUSING, FILTER, ACCOMODATOR, FOR 24 X 24 FILTER
HUS03523	ACG2424-6	HOUSING, FILTER, ACCOMODATOR, FOR 24 X 24 FILTER
HUS03529	ACE1620-6	HOUSING, FILTER, ELECTRIC FURNACES AND A/H, FOR 16 X 20
HUS03535	ACE2020-3	HOUSING, FILTER, ELECTRIC FURNACES AND A/H, FOR 20 X 20
HUS03530	ACE2020-6	HOUSING, FILTER, ELECTRIC FURNACES AND A/H, FOR 20 X 20
HUS03536	ACE2025-3	HOUSING, FILTER, FURNACES AND A/H, FOR 20 X 25, DIMENSIONS 26-3/8 X 22
HUS03531	ACE2025-6	HOUSING, FILTER, ELECTRIC FURNACES AND A/H, FOR 20 X 25, DIMENSIONS 26-3/8 X 22
HUS03548	HRB20	HOUSING, FILTER, HORIZONTAL, 6-5/8 X 25-1/2 X 22

Transitions



Part #	Mfg #	Description
TRA00008	TRA/002T	TRANSITION; 26 GAUGE W/STRENGTHENING BEADS, 1-1/2 IN. LINER, 18 IN. LONG, 19-5/8 X 16-1/4 TO 24 X 21, TRA/002T
TRA00009	TRA/003T	TRANSITION; 26 GAUGE W/STRENGTHENING BEADS, 1-1/2 IN. LINER, 18" LONG, 19-3/4 X 19-3/4 TO 33-1/4 X 21, TRA/003T
TRA00010	TRA/004T	TRANSITION; 26 GAUGE W/STRENGTHENING BEADS, 1-1/2 IN. LINER, 18" LONG, 19-3/4 X 19-3/4 TO 33-1/4 X 27, TRA/004T
TRA00011	TRA/005T	TRANSITION; 26 GAUGE W/STRENGTHENING BEADS, 1-1/2 IN. LINER, 18" LONG, 19-3/4 X 23-1/4 TO 33-1/4 X 27, TRA/005T
TRA00012	TRA/006T	TRANSITION; 26 GAUGE W/STRENGTHENING BEADS, 1-1/2 IN. LINER, 18" LONG, 19-5/8 X 16-1/4 TO 33-1/4 X 21, TRA/006T
TRA00014	TRA/008T	TRANSITION; 26 GAUGE W/STRENGTHENING BEADS, 1-1/2 IN. LINER, 18" LONG, 19-1/2 X 13-1/4 TO 26-1/4 X 21-1/4, TRA/008T
TRA00017	TRA/011T	TRANSITION; PLENUM, 26 GAUGE W/STRENGTHENING BEADS, 1 1/2 INCH LINER, 18" LONG, 19 5/8 X 13 1/4 X 33 1/4 X 21,



Plenums



Part #	Mfg #	Description
PLN00923	PLN/001T-3	PLENUM; 26 GAUGE W/STRENGTH BEADS, 1-1/2 IN. LINER, INSULATED, 12-1/2 X 19-1/2, PLN/001T-3
PLN00924	PLN/002T-3	PLENUM; 26 GAUGE W/STRENGTH BEADS, 1-1/2 IN. LINER, INSULATED, 12 X 21-1/2, PLN/002T-3
PLN00925	PLN/003T-3	PLENUM; 26 GAUGE W/STRENGTH BEADS, 1-1/2 IN. LINER, INSULATED, 12 X 24, PLN/003T-3
PLN00926	PLN/004T-3	PLENUM; 26 GAUGE W/STRENGTH BEADS, 1-1/2 IN. LINER, INSULATED, 15-1/2 X 19-1/2, PLN/004T-3
PLN00927	PLN/005T-3	PLENUM; 26 GAUGE W/STRENGTH BEADS, 1-1/2 IN. LINER, INSULATED, 19-1/2 X 19-1/2, PLN/005T-3
PLN00928	PLN/006T-3	PLENUM; 26 GAUGE W/STRENGTH BEADS, 1-1/2 IN. LINER, INSULATED, 19-1/2 X 22-1/2, PLN/006T-3
PLN00964	PLN/017T-3	PLENUM; 26 GAUGE W/STRENGTH BEADS, 1 1/2 INCH LINER, INSULATED, 16 X 12 1/4 X 36
PLN00992	XLHA42P-HOUTRA	PLENUM; 26 GAUGE W/STRENGTH BEADS, 1-1/2 IN. LINER, INSULATED, 16X19-1/2X36, XLHA42P-HOUTRA
PLN01026	PLN23.51336	PLENUM; 23 1/2 X 13 X 36 R/A, R-6 LINER
PLN01027	PLN23.51536	PLENUM; 23 1/2 X 15 X 36 R/A, R-6 LINER
PLN01030	PLN1819.536	PLENUM; 18 X 19 1/2 X 36 R/A,R-6 LINER
PLN01031	PLN1821.536	PLENUM; 18 X 21 1/2 X 36 R/A, R-6 LINER
PLN01033	PLN251236	PLENUM; 25 X 12 X 36 R/A, R-6 LINER
PLN01038	PLN202136	PLENUM; 20 X 21 X 36 R/A, R-6 LINER
PLN01066	5PLN24.37514.0625	PLENUM; 1/14 OUT, 24-3/8 X 14-1/16 X 60, 24 GAUGE
PLN01067	5PLN18.062516.1875	PLENUM; 1-1/4 OUT, 18-1/16 X 16-3/16 X 60, 24 GAUGE
PLN01233	141/2X143/8X36R	PLENUM; 14 1/2 X 14 3/8 X 36 R-6 LINER
PLN01234	183/8X143/8X36R	PLENUM; 18 3/8 X 14 3/8 X 36 R-6 LINER
PLN01235	201/2X143/8X36R	PLENUM; 20 1/2 X 14 3/8 X 36 R-6 LINER
PLN01242	171/8X141/2X36R	PLENUM; 17 1/8 X 14 1/2 X 36 R-6 LINER
PLN01388	103/8X16X36R	PLENUM; 10 3/8 X 16 X 36 R-6 LINER FITS AMERISTAR AHU
PLN01389	103/8X18X36R	PLENUM; 10 3/8 X 18 X 36 R-6 LINER FITS AMERISTAR AHU

Other sizes available. Please contact your local Trane Supply store.



Grilles & Diffusers



Aluminum Ceiling Diffusers w/ Multi-Shutter Damper

- Extruded aluminum construction
- Cores flush with margin
- Face mount for easy installation
- Bright White finish
- For sidewall or ceiling application
- Multi-shutter dampers - aluminum
- Inconspicuous fingertip lever for air volume control

*Many more sizes and styles available!
Please contact your local
Trane Supply store.*

Part #	Mfg #	Size	Application	Style
050700	A501MS 06 06 W	6" X 6"	CEILING	1-WAY
050701	A501MS 08 08 W	8" X 8"	CEILING	1-WAY
050702	A501MS 10 10 W	10" X 10"	CEILING	1-WAY
050703	A501MS 12 12 W	12" X 12"	CEILING	1-WAY
050704	A501MS 14 14 W	14" X 14"	CEILING	1-WAY



Part #	Mfg #	Size	Application	Style
050705	A502MS 06 06 W	6" X 6"	CEILING	2-WAY
050706	A502MS 08 08 W	8" X 8"	CEILING	2-WAY
050707	A502MS 10 10 W	10" X 10"	CEILING	2-WAY
050708	A502MS 12 12 W	12" X 12"	CEILING	2-WAY
050709	A502MS 14 14 W	14" X 14"	CEILING	2-WAY



Part #	Mfg #	Size	Application	Style
050710	A503MS 06 06 W	6" X 6"	CEILING	3-WAY
050711	A503MS 08 08 W	8" X 8"	CEILING	3-WAY
050712	A503MS 10 10 W	10" X 10"	CEILING	3-WAY
050713	A503MS 12 12 W	12" X 12"	CEILING	3-WAY



Part #	Mfg #	Size	Application	Style
050715	A504MS 06 06 W	6" X 6"	CEILING	4-WAY
050716	A504MS 08 08 W	8" X 8"	CEILING	4-WAY
050717	A504MS 10 10 W	10" X 10"	CEILING	4-WAY
050718	A504MS 12 12 W	12" X 12"	CEILING	4-WAY
050719	A504MS 14 14 W	14" X 14"	CEILING	4-WAY



Part #	Mfg #	Size	Application	Style
050720	A505MS 06 06 W	6" X 6"	CEILING	5-WAY
050721	A505MS 08 08 W	8" X 8"	CEILING	5-WAY
050722	A505MS 10 10 W	10" X 10"	CEILING	5-WAY
050723	A505MS 12 12 W	12" X 12"	CEILING	5-WAY
050724	A505MS 14 14 W	14" X 14"	CEILING	5-WAY



Steel Curved Blade Registers, Multi-Shutter Dampers (Horizontal)

- One-piece, stamped-face, curved-blade construction
- For sidewall or ceiling application
- Multi-shutter valve, galvanized
- Bright White enamel finish
- One-way deflection
- One-way air pattern
- Listed heights 10" and larger require double valves

Part #	Mfg #	Size	Application	Style
013399	301 06 06 W	6" X 6"	SIDE WALL OR CEILING	1-WAY
013400	301 08 04 W	8" X 4"	SIDE WALL OR CEILING	1-WAY
013401	301 08 06 W	8" X 6"	SIDE WALL OR CEILING	1-WAY
013402	301 08 08 W	8" X 8"	SIDE WALL OR CEILING	1-WAY
013403	301 10 04 W	10" X 4"	SIDE WALL OR CEILING	1-WAY
013404	301 10 06 W	10" X 6"	SIDE WALL OR CEILING	1-WAY
013405	301 10 08 W	10" X 8"	SIDE WALL OR CEILING	1-WAY
013406	301 10 10 W	10" X 10"	SIDE WALL OR CEILING	1-WAY
013407	301 12 04 W	12" X 4"	SIDE WALL OR CEILING	1-WAY
013408	301 12 06 W	12" X 6"	SIDE WALL OR CEILING	1-WAY
013409	301 12 08 W	12" X 8"	SIDE WALL OR CEILING	1-WAY
013410	301 12 12 W	12" X 12"	SIDE WALL OR CEILING	1-WAY
013411	301 14 04 W	14" X 4"	SIDE WALL OR CEILING	1-WAY
013412	301 14 06 W	14" X 6"	SIDE WALL OR CEILING	1-WAY
013413	301 14 08 W	14" X 8"	SIDE WALL OR CEILING	1-WAY



Part #	Mfg #	Size	Application	Style
013440	302 08 04 W	8" X 4"	SIDE WALL OR CEILING	2-WAY
013442	302 08 08 W	8" X 8"	SIDE WALL OR CEILING	2-WAY
013444	302 10 06 W	10" X 6"	SIDE WALL OR CEILING	2-WAY
013445	302 10 08 W	10" X 8"	SIDE WALL OR CEILING	2-WAY
013448	302 12 06 W	12" X 6"	SIDE WALL OR CEILING	2-WAY
013449	302 12 08 W	12" X 8"	SIDE WALL OR CEILING	2-WAY
2001904	302 12 10 W	12" X 10"	SIDE WALL OR CEILING	2-WAY
013452	302 14 06 W	14" X 6"	SIDE WALL OR CEILING	2-WAY
013453	302 14 08 W	14" X 8"	SIDE WALL OR CEILING	2-WAY



Registers



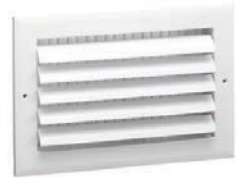
Part #	Mfg #	Size	Application	Style
013419	303 06 06 W	6" X 6"	SIDE WALL OR CEILING	3-WAY
013420	303 08 04 W	8" X 4"	SIDE WALL OR CEILING	3-WAY
013421	303 08 06 W	8" X 6"	SIDE WALL OR CEILING	3-WAY
013422	303 08 08 W	8" X 8"	SIDE WALL OR CEILING	3-WAY
013423	303 10 04 W	10" X 4"	SIDE WALL OR CEILING	3-WAY
013424	303 10 06 W	10" X 6"	SIDE WALL OR CEILING	3-WAY
013425	303 10 08 W	10" X 8"	SIDE WALL OR CEILING	3-WAY
013426	303 10 10 W	10" X 10"	SIDE WALL OR CEILING	3-WAY
013428	303 12 06 W	12" X 6"	SIDE WALL OR CEILING	3-WAY
013429	303 12 08 W	12" X 8"	SIDE WALL OR CEILING	3-WAY
013430	303 12 12 W	12" X 12"	SIDE WALL OR CEILING	3-WAY
013431	303 14 04 W	14" X 4"	SIDE WALL OR CEILING	3-WAY
013432	303 14 06 W	14" X 6"	SIDE WALL OR CEILING	3-WAY
013433	303 14 08 W	14" X 8"	SIDE WALL OR CEILING	3-WAY



Aluminum Curved Blade, 1-way Registers, Multi-Shutter Damper (Horizontal)

- Aluminum face/fin construction
- For sidewall or ceiling application
- Galvanized multi-shutter valve
- Bright White finish
- One-way deflection
- One-way air pattern
- Adjustable curved blades increase deflection control

Part #	Mfg #	Size	Application	Style
021242	A611MS 08 04 W	8" X 4"	SIDE WALL OR CEILING	1-WAY
581000	A611MS 08 06 W	8" X 6"	SIDE WALL OR CEILING	1-WAY
021244	A611MS 08 08 W	8" X 8"	SIDE WALL OR CEILING	1-WAY
021245	A611MS 10 04 W	10" X 4"	SIDE WALL OR CEILING	1-WAY
021247	A611MS 10 06 W	10" X 6"	SIDE WALL OR CEILING	1-WAY
021248	A611MS 10 08 W	10" X 8"	SIDE WALL OR CEILING	1-WAY
021249	A611MS 10 10 W	10" X 10"	SIDE WALL OR CEILING	1-WAY
021250	A611MS 12 04 W	12" X 4"	SIDE WALL OR CEILING	1-WAY
021252	A611MS 12 06 W	12" X 6"	SIDE WALL OR CEILING	1-WAY
021253	A611MS 12 08 W	12" X 8"	SIDE WALL OR CEILING	1-WAY
021255	A611MS 12 12 W	12" X 12"	SIDE WALL OR CEILING	1-WAY



Aluminum Straight Blade, Multi-Shutter Damper, Vertical Fin Registers (Horizontal)

- Aluminum face/fin construction
- Adjustable straight fins provides individual flexion control
- Stamped-face margins eliminate mitered corners and rough edges
- Bright White finish
- Galvanized multi-shutter valve

Part #	Mfg #	Size	Application	Style
022442	A618MS 08 04 W	8" X 4"	SIDEWALL	ADJUSTABLE
022443	A618MS 08 06 W	8" X 6"	SIDEWALL	ADJUSTABLE
026815	A618MS 08 08 W	8" X 8"	SIDEWALL	ADJUSTABLE
022445	A618MS 10 04 W	10" X 4"	SIDEWALL	ADJUSTABLE
022447	A618MS 10 06 W	10" X 6"	SIDEWALL	ADJUSTABLE
022448	A618MS 10 08 W	10" X 8"	SIDEWALL	ADJUSTABLE
022450	A618MS 12 04 W	12" X 4"	SIDEWALL	ADJUSTABLE
022452	A618MS 12 06 W	12" X 6"	SIDEWALL	ADJUSTABLE
022453	A618MS 12 08 W	12" X 8"	SIDEWALL	ADJUSTABLE
022456	A618MS 14 04 W	14" X 4"	SIDEWALL	ADJUSTABLE
022458	A618MS 14 06 W	14" X 6"	SIDEWALL	ADJUSTABLE
022459	A618MS 14 08 W	14 X 8"	SIDEWALL	ADJUSTABLE



Steel 2-Way Registers, Multi-Shutter Damper, 1/3" Fin Spacing (White, Horizontal)

- All-steel construction
- Used for ceiling or sidewall installations
- Ideal for shallow duct installations
- 1/3" spaced fins set at 20 degrees
- Galvanized Multi-shutter valve
- 1 5/8" depth when fully opened
- Interlocking valve louvers for positive shut-off
- Bright White Finish

Part #	Mfg #	Size	Application	Style
010816	661 10 04 W	10" X 4"	SIDE WALL OR CEILING	2-WAY
010819	661 10 06 W	10" X 6"	SIDE WALL OR CEILING	2-WAY
010820	661 10 08 W	10" X 8"	SIDE WALL OR CEILING	2-WAY
010854	661 10 10 W	10" X 10"	SIDE WALL OR CEILING	2-WAY
010821	661 12 04 W	12" X 4"	SIDE WALL OR CEILING	2-WAY
010823	661 12 06 W	12" X 6"	SIDE WALL OR CEILING	2-WAY
010826	661 12 10 W	12" X 10"	SIDE WALL OR CEILING	2-WAY
010830	661 14 06 W	14" X 6"	SIDE WALL OR CEILING	2-WAY
010832	661 14 08 W	14" X 8"	SIDE WALL OR CEILING	2-WAY
010845	661 14 10 W	14" X 10"	SIDE WALL OR CEILING	2-WAY
580528	661 14 12 W	14" X 12"	SIDE WALL OR CEILING	2-WAY



Registers



Steel 2-Way Registers, Multi-Shutter Damper, 1/2" Fin Spacing (Horizontal)

- All-steel construction
- Used for ceiling or sidewall installations
- Ideal for shallow duct installations
- 1/2" spaced fins set at 40 degrees
- Multi-shutter valve
- 1 5/8" depth when fully opened
- Interlocking valve louvers for positive shut-off
- Available with fusible link option, limited sizes (not UL-listed or fire-rated) Bright White Finish

Part #	Mfg #	Size	Application	Style
043827	682 10 04 W	10" X 4"	SIDE WALL OR CEILING	2-WAY
043829	682 10 06 W	10" X 6"	SIDE WALL OR CEILING	2-WAY
043833	682 12 04 W	12" X 4"	SIDE WALL OR CEILING	2-WAY
043836	682 12 06 W	12" X 6"	SIDE WALL OR CEILING	2-WAY
043843	682 14 06 W	14" X 6"	SIDE WALL OR CEILING	2-WAY



Steel 3-Way Registers, Multi-Shutter Damper, 1/2" Fin Spacing (Horizontal)

- All-steel construction
- Used for ceiling or sidewall installations
- Ideal for shallow duct installations
- 1/2" spaced fins set at 40 degrees
- Multi-shutter valve
- 1 5/8" depth when fully opened
- Interlocking valve louvers for positive shut-off
- Plastic Handles
- Bright White Finish

Part #	Mfg #	Size	Application	Style
043860	683 08 04 W	8" X 4"	SIDE WALL OR CEILING	3-WAY
043861	683 08 06 W	8" X 6"	SIDE WALL OR CEILING	3-WAY
043862	683 08 08 W	8" X 8"	SIDE WALL OR CEILING	3-WAY
043864	683 10 04 W	10" X 4"	SIDE WALL OR CEILING	3-WAY
043866	683 10 06 W	10" X 6"	SIDE WALL OR CEILING	3-WAY
043867	683 10 08 W	10" X 8"	SIDE WALL OR CEILING	3-WAY
043868	683 10 10 W	10" X 10"	SIDE WALL OR CEILING	3-WAY
043871	683 12 06 W	12" X 6"	SIDE WALL OR CEILING	3-WAY
043872	683 12 08 W	12" X 8"	SIDE WALL OR CEILING	3-WAY
043876	683 14 06 W	14" X 6"	SIDE WALL OR CEILING	3-WAY
043877	683 14 08 W	14" X 8"	SIDE WALL OR CEILING	3-WAY



Floor Registers



Steel Toe Kicks (Horizontal)

- All-steel construction
- Heavy-gauge, stamped face
- Multi-angle fins
- Golden Sand or Bright White enamel finish



Part #	Mfg #	Size	Application	Style	Color
027510	420 08 04 W	8" X 8"	FLOOR	MULTI-ANGLED	WHITE
011301	420 10 02 GS	10" X 2"	FLOOR	MULTI-ANGLED	GOLDEN SANDS
011300	420 10 02 W	10" X 2"	FLOOR	MULTI-ANGLED	WHITE
011307	420 10 04 GS	10" X 4"	FLOOR	MULTI-ANGLED	GOLDEN SANDS
011306	420 10 04 W	10" X 4"	FLOOR	MULTI-ANGLED	WHITE
011303	420 12 02 GS	12" X 2"	FLOOR	MULTI-ANGLED	GOLDEN SANDS
011302	420 12 02 W	12" X 2"	FLOOR	MULTI-ANGLED	WHITE
011309	420 12 04 GS	12" X 4"	FLOOR	MULTI-ANGLED	GOLDEN SANDS
011308	420 12 04 W	12" X 4"	FLOOR	MULTI-ANGLED	WHITE
011305	420 14 02 GS	14" X 2"	FLOOR	MULTI-ANGLED	GOLDEN SANDS
011304	420 14 02 W	14" X 2"	FLOOR	MULTI-ANGLED	WHITE
011311	420 14 04 GS	14" X 4"	FLOOR	MULTI-ANGLED	GOLDEN SANDS
011310	420 14 04 W	14" X 4"	FLOOR	MULTI-ANGLED	WHITE

Steel Floor Registers (Horizontal)

- All-steel construction
- Multi-angle fin setting
- Rolled fin for strength and safety
- Welded construction
- Foot-operated dial control
- Heavy-gauge, stamped face
- Golden Sand or Bright White enamel finish



Part #	Mfg #	Size	Application	Style	Color
010711	421 02 10 W	2" X 10"	FLOOR	MULTI-ANGLED	WHITE
010712	421 02 12 GS	2" X 12"	FLOOR	MULTI-ANGLED	GOLDEN SANDS
010713	421 02 12 W	2" X 12"	FLOOR	MULTI-ANGLED	WHITE
010714	421 02 14 GS	2" X 14"	FLOOR	MULTI-ANGLED	GOLDEN SANDS
010715	421 02 14 W	2" X 14"	FLOOR	MULTI-ANGLED	WHITE
010705	421 04 08 GS	4" X 8"	FLOOR	MULTI-ANGLED	GOLDEN SANDS
010706	421 04 08 W	4" X 8"	FLOOR	MULTI-ANGLED	WHITE
010717	421 04 10 GS	4" X 10"	FLOOR	MULTI-ANGLED	GOLDEN SANDS
010718	421 04 10 W	4" X 10"	FLOOR	MULTI-ANGLED	WHITE
010719	421 04 12 GS	4" X 12"	FLOOR	MULTI-ANGLED	GOLDEN SANDS
010720	421 04 12 W	4" X 12"	FLOOR	MULTI-ANGLED	WHITE

(cont'd on next page)

Floor Registers



Steel Floor Registers (cont'd)

Part #	Mfg #	Size	Application	Style	Color
010721	421 04 14 GS	4" X 14"	FLOOR	MULTI-ANGLED	GOLDEN SANDS
010722	421 04 14 W	4" X 14"	FLOOR	MULTI-ANGLED	WHITE
010765	421 06 10 GS	6" X 10"	FLOOR	MULTI-ANGLED	GOLDEN SANDS
010764	421 06 10 W	6" X 10"	FLOOR	MULTI-ANGLED	WHITE
010767	421 06 12 GS	6" X 12"	FLOOR	MULTI-ANGLED	GOLDEN SANDS
010766	421 06 12 W	6" X 12"	FLOOR	MULTI-ANGLED	WHITE
010769	421 06 14 GS	6" X 14"	FLOOR	MULTI-ANGLED	GOLDEN SANDS
010768	421 06 14 W	6" X 14"	FLOOR	MULTI-ANGLED	WHITE

Return Grilles



Steel Return Air Grilles - 1/3" Fin Spacing (Horizontal)

- All-steel construction
- 1/3" spaced fins set at 20 degrees
- Exceptional free area
- 5/16" Margin Turnback
- Bright White finish

Part #	Mfg #	Size	Application	Style
043100	650 06 04 W	6" X 4"	SIDEWALL	ONE-WAY
043101	650 06 06 W	6" X 6"	SIDEWALL	ONE-WAY
012086	650 06 10 W	6" X 10"	SIDEWALL	ONE-WAY
043102	650 06 14 W	6" X 14"	SIDEWALL	ONE-WAY
043104	650 08 04 W	8" X 4"	SIDEWALL	ONE-WAY
043105	650 08 06 W	8" X 6"	SIDEWALL	ONE-WAY
043106	650 08 08 W	8" X 8"	SIDEWALL	ONE-WAY
043107	650 08 14 W	8" X 14"	SIDEWALL	ONE-WAY
571242	650 08 36 W	8" X 36"	SIDEWALL	ONE-WAY
043108	650 10 04 W	10" X 4"	SIDEWALL	ONE-WAY
012137	650 10 05 W	10" X 5"	SIDEWALL	ONE-WAY
043109	650 10 06 W	10" X 6"	SIDEWALL	ONE-WAY
043110	650 10 08 W	10" X 8"	SIDEWALL	ONE-WAY
043111	650 10 10 W	10" X 10"	SIDEWALL	ONE-WAY
012361	650 10 12 W	10" X 12"	SIDEWALL	ONE-WAY
043112	650 10 14 W	10" X 14"	SIDEWALL	ONE-WAY



(cont'd on next page)

Return Grilles



Steel Return Air Grilles (cont'd)

Part #	Mfg #	Size	Application	Style
043113	650 10 20 W	10" X 20"	SIDEWALL	ONE-WAY
043114	650 10 24 W	10" X 24"	SIDEWALL	ONE-WAY
043116	650 12 04 W	12" X 4"	SIDEWALL	ONE-WAY
012142	650 12 05 W	12" X 5"	SIDEWALL	ONE-WAY
043117	650 12 06 W	12" X 6"	SIDEWALL	ONE-WAY
043118	650 12 08 W	12" X 8"	SIDEWALL	ONE-WAY
043119	650 12 10 W	12" X 10"	SIDEWALL	ONE-WAY
043120	650 12 12 W	12" X 12"	SIDEWALL	ONE-WAY
043121	650 12 14 W	12" X 14"	SIDEWALL	ONE-WAY
043122	650 12 16 W	12" X 16"	SIDEWALL	ONE-WAY
043123	650 12 18 W	12" X 18"	SIDEWALL	ONE-WAY
043124	650 12 20 W	12" X 20"	SIDEWALL	ONE-WAY
043125	650 12 24 W	12" X 24"	SIDEWALL	ONE-WAY
026867	650 12 28 W	12" X 28"	SIDEWALL	ONE-WAY
043126	650 14 04 W	14" X 4"	SIDEWALL	ONE-WAY
043127	650 14 06 W	14" X 6"	SIDEWALL	ONE-WAY
043128	650 14 08 W	14" X 8"	SIDEWALL	ONE-WAY
043129	650 14 10 W	14" X 10"	SIDEWALL	ONE-WAY
043130	650 14 12 W	14" X 12"	SIDEWALL	ONE-WAY
043131	650 14 14 W	14" X 14"	SIDEWALL	ONE-WAY
043132	650 14 16 W	14" X 16"	SIDEWALL	ONE-WAY
043133	650 14 18 W	14" X 18"	SIDEWALL	ONE-WAY
043134	650 14 20 W	14" X 20"	SIDEWALL	ONE-WAY
043135	650 14 24 W	14" X 24"	SIDEWALL	ONE-WAY
043136	650 14 30 W	14" X 30"	SIDEWALL	ONE-WAY
043137	650 16 04 W	16" X 4"	SIDEWALL	ONE-WAY
043138	650 16 06 W	16" X 6"	SIDEWALL	ONE-WAY
043139	650 16 08 W	16" X 8"	SIDEWALL	ONE-WAY
043140	650 16 10 W	16" X 10"	SIDEWALL	ONE-WAY
043176	650 30 04 W	30" X 4"	SIDEWALL	ONE-WAY
043177	650 30 06 W	30" X 6"	SIDEWALL	ONE-WAY
043178	650 30 08 W	30" X 8"	SIDEWALL	ONE-WAY



Return Grilles



Steel Return Air Grilles - 1/2" Fin Spacing (Horizontal)

- All-steel construction
- 1/2" spaced fins set at 40 degrees
- Exceptional free area
- 5/16" Margin Turnback
- Bright White finish



Part #	Mfg #	Size	Application	Style
043304	672 08 06 W	8" X 6"	SEWALL	ONE-WAY
043305	672 08 08 W	8" X 8"	SEWALL	ONE-WAY
043306	672 08 14 W	8" X 14"	SEWALL	ONE-WAY
043308	672 10 06 W	10" X 6"	SEWALL	ONE-WAY
043309	672 10 08 W	10" X 8"	SEWALL	ONE-WAY
043310	672 10 10 W	10" X 10"	SEWALL	ONE-WAY
073125	672 10 12 W	10" X 12"	SEWALL	ONE-WAY
073126	672 10 14 W	10" X 14"	SEWALL	ONE-WAY
043315	672 12 06 W	12" X 6"	SEWALL	ONE-WAY
043316	672 12 08 W	12" X 8"	SEWALL	ONE-WAY
043317	672 12 10 W	12" X 10"	SEWALL	ONE-WAY
043318	672 12 12 W	12" X 12"	SEWALL	ONE-WAY
043319	672 12 14 W	12" X 14"	SEWALL	ONE-WAY
043320	672 12 16 W	12" X 16"	SEWALL	ONE-WAY
043321	672 12 18 W	12" X 18"	SEWALL	ONE-WAY
043325	672 14 06 W	14" X 6"	SEWALL	ONE-WAY
043326	672 14 08 W	14" X 8"	SEWALL	ONE-WAY
043327	672 14 10 W	14" X 10"	SEWALL	ONE-WAY
043328	672 14 12 W	14" X 12"	SEWALL	ONE-WAY
043329	672 14 14 W	14" X 14"	SEWALL	ONE-WAY
043330	672 14 16 W	14" X 16"	SEWALL	ONE-WAY
043331	672 14 18 W	14" X 18"	SEWALL	ONE-WAY
043334	672 16 06 W	16" X 6"	SEWALL	ONE-WAY
043335	672 16 08 W	16" X 8"	SEWALL	ONE-WAY
043336	672 16 10 W	16" X 10"	SEWALL	ONE-WAY
043337	672 16 12 W	16" X 12"	SEWALL	ONE-WAY
043338	672 16 14 W	16" X 14"	SEWALL	ONE-WAY
043339	672 16 16 W	16" X 16"	SEWALL	ONE-WAY
043348	672 18 18 W	18" X 18"	SEWALL	ONE-WAY
043357	672 20 20 W	20" X 20"	SEWALL	ONE-WAY
043372	672 30 06 W	30" X 6"	SEWALL	ONE-WAY

Return Grilles



Steel Return Air Filter Grilles - 1/2" Fin Spacing (Horizontal)

- All-steel construction
- 1/2" spaced fins set at 40 degrees
- Effectively conceals filter
- Removable face for easy installation and cleaning
- Equipped with adjustable filter retainers
- Bright White finish
- Use standard 1" thick disposable filters (not included)



Part #	Mfg #	Size	Application	Style
043501	673 12 12 W	12" X 12"	SIDEWALL	ONE-WAY
043504	673 14 14 W	14" X 14"	SIDEWALL	ONE-WAY
043505	673 14 20 W	14" X 20"	SIDEWALL	ONE-WAY
043519	673 20 20 W	20" X 20"	SIDEWALL	ONE-WAY
043520	673 20 25 W	20" X 25"	SIDEWALL	ONE-WAY
043521	673 20 30 W	20" X 30"	SIDEWALL	ONE-WAY
043522	673 24 12 W	24" X 12"	SIDEWALL	ONE-WAY
043523	673 24 14 W	24" X 14"	SIDEWALL	ONE-WAY
043526	673 24 24 W	24" X 24"	SIDEWALL	ONE-WAY
043530	673 25 20 W	25" X 20"	SIDEWALL	ONE-WAY
043535	673 30 20 W	30" X 20"	SIDEWALL	ONE-WAY

Steel Baseboard Return Grilles - 1/3" Fin Spacing (Horizontal)

- One-piece steel construction
- 1/3" spaced fins set at 20 degrees
- 7/8" margin turnback
- Exceptional free area
- Complementary return air grille for #654 supply or #664 supply
- Bright White finish
- Install with fins upward or downward for best duct concealment



Part #	Mfg #	Size	Application	Style
043646	657 14 04 W	14" X 4"	SIDEWALL	ONE-WAY
043649	657 14 06 W	14" X 6"	SIDEWALL	ONE-WAY
043650	657 14 08 W	14" X 8"	SIDEWALL	ONE-WAY
043651	657 14 10 W	14" X 10"	SIDEWALL	ONE-WAY
043652	657 14 12 W	14" X 12"	SIDEWALL	ONE-WAY
043653	657 16 06 W	16" X 6"	SIDEWALL	ONE-WAY
043654	657 16 08 W	16" X 8"	SIDEWALL	ONE-WAY
043670	657 30 06 W	30" X 6"	SIDEWALL	ONE-WAY
043671	657 30 08 W	30" X 8"	SIDEWALL	ONE-WAY
043672	657 30 10 W	30" X 10"	SIDEWALL	ONE-WAY
043673	657 30 12 W	30" X 12"	SIDEWALL	ONE-WAY

Steel Return Air Filter Grilles, 1/3" Fin Spacing (White)

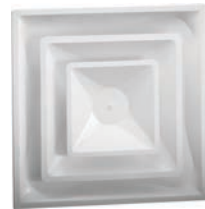
- All-steel construction
- 1/3" spaced fins set at 20 degrees
- Effectively conceals filter
- Use standard 1" thick disposable filters (not included)
- Removable face for easy installation and cleaning
- Equipped with adjustable filter retainers
- Bright White finish



Part #	Mfg #	Size	Application	Style
012745	659T 20 20 W	20" X 20"	T-BAR	1-WAY
050560	659Ti R4 W	20" X 20"	T-BAR	1-WAY RR4 INSULATION)

Steel 4-way Diffusers, 2 Cone Design, Fixed Collar (White)

- All-steel construction
- Provides high air volume delivery
- 360-degree air diffusion
- 2 cone fixed core
- Fixed collar 6" to 14"
- Formed back panel
- Unique 2" high collar permits easy flex connections
- Utilizes butterfly damper (3800 Series) inserted in collar; order separately
- Overall size 23 3/4" x 23 3/4"



Part #	Mfg #	Size	Application	Style
050500	FPD 06 W	6"	T-BAR	2 CONE
050502	FPD 08 W	8"	T-BAR	2 CONE
050504	FPD 10 W	10"	T-BAR	2 CONE
050505	FPD 12 W	12"	T-BAR	2 CONE
050506	FPD 14 W	14"	T-BAR	2 CONE

Steel 4-way Diffusers, 3 Cone Design, Fixed Collar (White)

- All-steel construction
- Provides high air volume delivery
- 360-degree air diffusion
- 3 cone fixed core
- Fixed collar 6" to 14"
- Formed back panel (FPD3 R6 has insulated back)
- Unique 2" high collar permits easy flex connections
- Utilizes butterfly damper (3800 Series) inserted in collar; order separately
- Overall size 23 3/4" x 23 3/4"



Part #	Mfg #	Size	Application	Style
050509	FPD3 06 W	6"	SIDEWALL	3 CONE
050510	FPD3 08 W	8"	SIDEWALL	3 CONE
050511	FPD3 10 W	10"	SIDEWALL	3 CONE
050512	FPD3 12 W	12"	SIDEWALL	3 CONE
050513	FPD3 14 W	14"	SIDEWALL	3 CONE

(cont'd on next page)

Diffusers (cont'd)

Part #	Mfg #	Size	Application	Style
583714	FPD3 DR6 06 W	6"	SIDEWALL	3 CONE (R6 INSULATED BACK)
583715	FPD3 DR6 08 W	8"	SIDEWALL	4 CONE (R6 INSULATED BACK)
583717	FPD3 DR6 12 W	12"	SIDEWALL	5 CONE (R6 INSULATED BACK)
583718	FPD3 DR6 14 W	14"	SIDEWALL	6 CONE (R6 INSULATED BACK)

Steel Vertical Fin Registers, Multi-Shutter Damper (Horizontal)

- All-steel construction
- Vertical, adjustable face bars
- Horizontal Multi-Shutter Valve
- Bright White finish

Part #	Mfg #	Size	Application	Style
075005	821 10 04 W	10" X 4"	SIDEWALL	ADJUSTABLE FACE BARS
075007	821 10 06 W	10" X 6"	SIDEWALL	ADJUSTABLE FACE BARS
075008	821 10 08 W	10" X 8"	SIDEWALL	ADJUSTABLE FACE BARS
075009	821 10 10 W	10" X 10"	SIDEWALL	ADJUSTABLE FACE BARS
075010	821 12 04 W	12" X 4"	SIDEWALL	ADJUSTABLE FACE BARS
075012	821 12 06 W	12" X 6"	SIDEWALL	ADJUSTABLE FACE BARS
075013	821 12 08 W	12" X 8"	SIDEWALL	ADJUSTABLE FACE BARS
075014	821 12 10 W	12" X 10"	SIDEWALL	ADJUSTABLE FACE BARS



5400 - Galvanized Steel Ring Collars (6-18")

- Unique snap-in design for easy installation
- 2" high collar permits easy flex connections
- Bead on collar improves the strength and provides retention for flexible duct connections
- 14" collar is mounted to diffuser at factory for steel back panels only.
- Uses 5400PP (black push pins) with insulated back panels (non-steel).

Part #	Mfg #	Size	Application	Style
050310	5406	6"	T-BAR	COLLER RING
050311	5407	7"	T-BAR	COLLER RING
050312	5408	8"	T-BAR	COLLER RING
050313	5409	9"	T-BAR	COLLER RING
050314	5410	10"	T-BAR	COLLER RING
050316	5412	12"	T-BAR	COLLER RING
050317	5414	14"	T-BAR	COLLER RING
050318	5416	16"	T-BAR	COLLER RING
050319	5418	18"	T-BAR	COLLER RING



3800 - Round Butterfly Damper for T-bar Diffusers

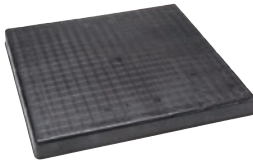
- Adjustable butterfly damper with removable handle (included)
- For use with 5400 and 6400 Series collars
- Golden Sand finish



Part #	Mfg #	Size	Application	Style
050290	3806 GS	6"	T BAR	BUTTERFLY DAMPER
050291	3807 GS	7"	T BAR	BUTTERFLY DAMPER
050292	3808 GS	8"	T BAR	BUTTERFLY DAMPER
050293	3809 GS	9"	T BAR	BUTTERFLY DAMPER
050294	3810 GS	10"	T BAR	BUTTERFLY DAMPER
050295	3812 GS	12"	T BAR	BUTTERFLY DAMPER
050296	3814 GS	14"	T BAR	BUTTERFLY DAMPER

Unit Mounting

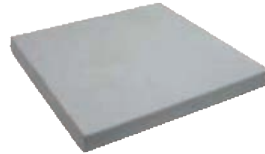
The Black Pad® Equipment Pads



- Full range of sizes available from 24" x 24" to 36" x 48" in 2 and 3 inch thickness
- Composed of ground recycled rubber in a co-injection process
- Extremely durable, resistant to ultraviolet light, and heavier than a completely plastic pad

Part #	Mfg #	Size
PAD01106	ACP30303	30X30X3
PAD01226	ACP32323	32X32X3
PAD01107	ACP36363	36X36X3
PAD01108	ACP36483	36X48X3

Cladlite® Lightweight Equipment Pads



- Full range of sizes available from 16" x 36" to 60" x 67" in 2 and 3 inch thickness
- Full foam bottom resists settling and vibration
- Fiber reinforced cement composite cladding, steel reinforcement, polystyrene foam core

Part #	Mfg #	Size
PAD00932	3636-2	36X36X2
PAD00972	3636-3	36X36X3
PAD01077	3640-3	36X40X3
PAD00985	3648-3	36X48X3
PAD01081	4558-3	45X58X3
PAD00965	4766-3	47X66X3

E-Lite® Plastic Equipment Pads



- Full range of sizes available from 18" x 38" to 56" x 58" in 2 and 3 inch thickness
- Rugged design provides uniform and generous ribbing for optimum self-leveling ground support without inserts
- Subtle texture resists slide

Part #	Mfg #	Size
PAD00898	EL3232-2	32X32X2
PAD00901	EL3636-2	36X36X2
PAD00902	EL3640-2	36X40X2
PAD01154	EL1838-2	18X38X3
PAD00907	EL3030-3	30X30X3
PAD00910	EL3232-3	32X32X3
PAD00913	EL3636-3	36X36X3
PAD00914	EL3640-3	36X40X3
PAD00915	EL3648-3	36X48X3
PAD01162	EL4040-3	40X40X3
PAD01048	EL4558-3	45X58X3
PAD01482	EL5070-3	50X70X3

Hurricane T-Class Pad™ Equipment Pad



- Even heavier than The Hurricane Pad™
- Heavier 4" pads provide sufficient weight to meet code for taller condensing units
- Designed for wind loads up to 175 MPH

Part #	Mfg #	Size
PAD01036	HT3636-4	36X36X4

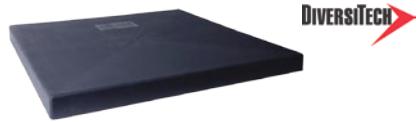
The Hurricane Pad™ Equipment Pads



- Full range of sizes available from 18" x 40" to 55" x 57" in 4 inch thickness
- The Hurricane Pad™ is designed for installations up to 150 MPH

Part #	Mfg #	Size
PAD01026	H3030-4	30X30X4
PAD01027	H3232-4	32X32X4
PAD01029	H3636-4	36X36X4
PAD01084	H3642-4	36X42X4
PAD01030	H3648-4	36X48X4
PAD01101	H3652-4	36X52X4
PAD01073	H4040-4	40X40X4
PAD01223	H4242-4	42X42X4

EnviroPad Black Plastic A/C Pad



Part #	Mfg #	Size
PAD01333	EP2424-2	24X24
PAD01334	EP3030-2	30X30
PAD01335	EP3232-2	32X32
PAD01337	EP3636-2	36X36
PAD01338	EP3842-2	38X42
PAD01339	EP2424-3	24X24
PAD01340	EP3030-3	30X30
PAD01341	EP3232-2	32X32
PAD01343	EP3636-3	36X36
PAD01475	EP3842-3	38X42

Unit Mounting

Air Handler Block

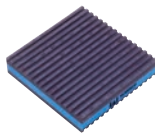
- Lightweight Styrofoam block provides A/C air handler support in attic installations



Part #	Mfg #	Size
BLK00958	7-60	8" X 4" X 8"

Anti Vibration Pads

- Composite foam core for greater vibration-dampening
- Outperforms cork and rubber by a margin of 3:1



Part #	Mfg #	Size
PAD00939	MP-2E	2" x 2" x 7/8" 48
PAD00941	MP-4E	4" x 4" x 7/8" 48

Heat Pump Risers

Part #	Mfg #	Size
BAS01870	HPR-3	3", 1-Piece
BAS01871	HPR-6	6", 1-Piece
BAS01984	HPR-3-2P	3", 2-Piece
BAS01985	HPR-6-2P	6", 2-Piece



- Heavy-duty plastic
- Butylmastic on the top and bottom

Mounting Brackets & Stands

Part #	Mfg #	Description
BAS01873	6-HAB-BG	BASE;BLACK STEEL AIR HANDLER, ADJUSTIBLE
BAS02877	QSTD6002	BASE; VERTICAL AIR HANDLER STAND, 24 INCH HEIGHT, 27 INCH ARM. (500 LB. CAPACITY)
BRK03940	87733	BRACKET; AIRTEC WALL CONDENSER BRACKET, 300 LB.
BRK03941	87734	BRACKET; AIRTEC WALL CONDENSER BRACKET, 300 LB. STAINLESS STEEL
BRK03942	87735	BRACKET; AIRTEC WALL CONDENSER BRACKET, 500 LB.
BRK04146	230-B2M	BRACKET; TYPE 2, 18" WALL BRACKET, MEDIUM
BRK04147	230-B2L	BRACKET; TYPE 2, 21" WALL BRACKET, LARGE
BRK04382	230-B3L	BRACKET; TYPE 3, 21 INCH HEF-T-BRACKET, LARGE 150 LB
BRK04383	230-B3M	BRACKET; TYPE 3, 19 INCH HEF-T-BRACKET, MEDIUM 100 LB

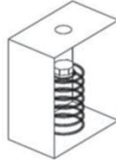
Unit Mounting

Isolators

- Vibration isolators are used to reduce the transmission of noise, shock, and vibration produced by mechanical equipment within a building structure.



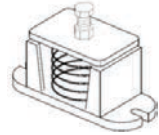
Suspended Isolator
(Rubber)



Suspended Isolator
(Steel)



Floor Isolator
(Rubber)



Floor Isolator
(Steel)

Type	Model No.	TWE 061D/E	TWE 090D/E	TWE 120D/E	TWE 150E- 180E	TWE 240E	TTA/TWA 073D- 090D	TTA/TWA 120D	TTA 120E/F	TTA/TWA 150- 180E/F	TTA/TWA 240E/F
Sus- pended Isolator (Rubber)	BAYISLT012A				X						
	BAYISLT013A	X									
	BAYISLT014A		X								
	BAYISLT015A			X							
	BAYISLT016A					X					
Sus- pended Isolator (Spring)	BAYISLT028A	X									
	BAYISLT029A		X	X							
	BAYISLT030A				X						
	BAYISLT031A					X					
	BAYISLT004A	X	X	X							
Floor Isolator (Rubber)	BAYISLT005A						X	X	X		
	BAYISLT009A				X					X	
	BAYISLT010A					X					X
	BAYISLT019A	X	X	X							
Floor Isolator (Spring)	BAYISLT021A				X						
	BAYISLT023A						X	X			
	BAYISLT024A								X	X	
	BAYISLT025A										X
	BAYISLT032A					X					



Duct Hanging Products

Metal Strap



Part #	Mfg #	Description
SRP00867	710-A1710	STRAP; GALV STRAPPING HANGING IRON, 10 FT ROLL, 28 GA
SRP00870	710-001	STRAP; METALLIC DUCT STRAP, 28 GA., 1 INCH X 100 FT
SRP00873	710-004	STRAP; METALLIC DUCT STRAP, 26 GA., 1 1/2 INCH X 100 FT

Webbed & Panduit Strap



Part #	Mfg #	Description	Pack Qty.
TIE00102	7-P36	TIE; 36 INCH HEAVY DUTY CABLE TIES	50/bag
TIE00103	7-P48	TIE; 48 INCH HEAVY DUTY CABLE TIES	50/bag
SF-36175HD-N	SF-36175HD-N	TIE; 36 INCH 175 LB CABLE TIE, NATURAL	25
SRP00875	710-100	STRAP; WOVEN POLYPROPYLENE, 1 3/4 INCH X 100 YARDS, BLACK; FOR FLEX DUCT	

Tapes & Adhesives

Metal Tapes

Part #	Mfg #	Description
TAP00124	1581A	TAPE; 1581A 2 MIL UL181A-P FOIL TAPE

Part #	Mfg #	Description
TAP00079	640-FSK2	TAPE; 2 INCH FOIL SCRIM KRAFT TAPE
TAP00080	640-FSK3	TAPE; 3 INCH FOIL SCRIM KRAFT TAPE



Tapes & Adhesives

Insulation and Tapes



Part #	Mfg #	Description
FOM000130	FOM000130	TAPE; FOAM TAPE; 1/8 X 2 INCHES, 30 FOOT
TAP00071	PC-600-B	TAPE; 2 INCH CONTRACTOR GRADE DUCT TAPE, BLACK
TAP00070	PC-600-S	TAPE; 2 INCH CONTRACTOR GRADE DUCT TAPE, SILVER
CRK000130	CRK000130	TAPE; CORK TAPE; 1/8 X 2 INCHES, 30 FOOT

Caulking Products and Sealants



Part #	Mfg #	Description
SLT00083	7-4000	SEALANT,CLEAR SILICONE, 10.3 FL.OZ. TUBE
SLT00085	7-4100	SEALANT, WHITE SILICONE, 10.3 FL. OZ. TUBE
SEL00974	FIRESEAL-814	SEALANT; SPECSEAL FIRESTOP FOR CLASS A BUILDINGS, 16491
SLT00093	6-202-1	SEALANT, DIVERSIGUM SEALING COMPOUND, 1 LB SLUG
SLT00095	AG-25	SEALANT, DIVERSIGUM SEALING COMPOUND, 3/8 INCH X 25 FOOT CORD
TOL02035	7-200	TOOL; STANDARD DUTY CAULK GUN
SLT00118	800-009	SEALANT; PRO-AIR DUCT SEALANT, U.L. CLASS 1

Part #	Mfg #	Description
ADH00030	4369-75	ADHESIVE; SPRAY-N-BOND WIDE WEB SPRAY ADHESIVE, 12 OZ SPRAY
CHM00396	4293-04	CHEMICAL; NU-FOAM EXPANDING SEALANT, 9 OZ. CAN
CHM00397	4293-75	CHEMICAL; NU-FOAM EXPANDING SEALANT, 20 OZ.CAN



Mastic Brushes

Part #	Mfg #	Description
BRU00344	B-503	BRUSH; 2 IN. CHIP BRUSH
BRU00371	B-504	BRUSH; 2-1/2 INCH CHIP BRUSH



Electrical

Disconnects Pre-Made Whips

- Liquid-tight flexible conduit system. A labor saving convenience kit for unit hookup.



Part #	Mfg #	Description
SWT02385	WN2060TR	SWITCH; 60 AMP NON-FUSED DISCONNECT, W/PULLOUT
SWT02592	DDS-60U	SWITCH; DISCONNECT SWITCH, 60A, NON-FUSED
SWT02411	DPU222R	SWITCH; 60 AMP NON-FUSED DISCONNECT SWITCH, METALLIC



Part #	Mfg #	Description
KIT07853	6-12-6NM	NON METALLIC CONNECTOR; 1/2 INCH X 6 FEET NO.10 THIN WIRE, SINGLE
KIT07851	6-34-6	NON METALLIC CONNECTOR; 3/4 INCH X 6 FEET NO.8 THIN WIRE, SINGLE
KIT07863	B6-34-6NM	NON METALLIC CONNECTOR; 3/4 INCH X 6 FEET # 8 THIN WIRE, BULK PACK
KIT07858	B6-12-6	NON METALLIC CONNECTOR; 1/2 INCH X 6 FEET #10 THIN WIRE, BULK PACK

Liquid-Tite Connectors



Part #	Mfg #	Description	Qty
CON01102	750-NMLT9075	FOR METALLIC AND NON METALLIC CONDUIT, 3/4 INCH, 90 DEG ELBOW	10
CON01109	750-MLT75	FOR METALLIC AND NON METALLIC CONDUIT, 3/4 INCH METALLIC STRAIGHT	10
CON01105	750-NMLT9050	FOR METALLIC AND NON METALLIC CONDUIT, 1/2 INCH NON METALLIC 90 DEG ELBOW	10
CON01103	750-NMLT50	FOR METALLIC AND NON METALLIC CONDUIT, 1/2 INCH NON METALLIC STRAIGHT	10
CON01100	750-NMLT75	FOR METALLIC AND NON METALLIC CONDUIT, 3/4 INCH NON METALLIC STRAIGHT	10
CON01108	750-MLT50	FOR METALLIC AND NON METALLIC CONDUIT, 1/2 INCH METALLIC STRAIGHT	25
CON01111	750-MLT9075	FOR METALLIC AND NON METALLIC CONDUIT, 3/4 INCH METALLIC 90 DEG ELBOW	10

Liquid-Tite Conduit

Part #	Mfg #	Description
CND00109	750-34100	CONDUIT; LIQUID TIGHT FLEXIBLE CONDUIT, 3/4 INCH X 100 FEET, NON METALLIC
CND00108	750-12100	CONDUIT; LIQUID TIGHT FLEXIBLE CONDUIT, 1/2 INCH X 100 FEET, NON METALLIC



Electrical

EZ-IN Cable & Connector



Part #	Mfg #	Description
59351202	59351202	WIRE; EZ_IN 14/4 STRANDED 600VOLT MINI SPLIT SHIELDED 250 FOOT SPOOL
59351203	59351203	WIRE; EZ_IN 14/4 STRANDED 600VOLT MINI SPLIT SHIELDED 50 FOOT COIL
64235201	64235201	CONNECTOR; EZ-IN SPEC -TEK CONNECTOR

Fuses

Part #	Mfg #	Description
FUS02265	FLNR015	FUSE; TIME DELAY, DUAL ELEMENT, 250 VAC, 15A
FUS02269	FLNR025	FUSE; TIME DELAY, 250VAC, DUAL ELEMENT, 25 AMP
FUS02276	FLNR030	FUSE; TIME DELAY, DUAL ELEM., 250 VAC, 30 AMP
FUS01885	FLNR035	FUSE; TIME DELAY, DUAL ELEMENT, 250 VAC, 35 AMP
FUS01886	FLNR040	FUSE; TIME DELAY, DUAL ELEM., 250 VAC, 40 AMP
FUS01887	FLNR045	FUSE; TIME DELAY, DUAL ELEMENT, 250 VAC, 45 AMP
FUS01888	FLNR050	FUSE; 50A, TIME DELAY, DUAL ELEMENT, 250 VAC
FUS01889	FLNR060	FUSE; TIME DELAY, DUAL ELEM., 250 VAC, 60 A



Contactors

Part #	Description
CTR02575	CONTACTOR; 3P 30A 24VAC / SCREWS
CTR02576	CONTACTOR; 2P 40A 24VAC / SCREWS
CTR02573	CONTACTOR; 2P 30A 24VAC / SCREWS
CTR02574	CONTACTOR; 1P 40A 24VAC / SCREWS



Other sizes available. Please contact your local Trane Supply store.



Copper Fittings

Rolled Stop Couplings (C x C)



Part #	Mfg #	Size	Pack Qty.
CPL00875	W01003	1/4"	100
CPL00879	W10142	5/16"	100
CPL00877	W01009	3/8"	100
CPL00880	W01017	1/2"	100
CPL00881	W01022	5/8"	50
CPL00882	W01028	3/4"	25
CPL00923	W01034	7/8"	25
CPL00892	W01047	1-1/8"	25
CPL00034	W01055	1-3/8"	25
CPL00885	W01063	1-5/8"	10

90° Long Radius Elbows (C x C)



Part #	Mfg #	Size	Pack Qty.
ELL00882	W02715	1/4"	50
ELL00881	W02710	5/16"	50
ELL00883	W02716	3/8"	50
ELL00046	W02717	1/2"	50
ELL00884	W02722	5/8"	25
ELL00885	W02728	3/4"	10
ELL00016	W02734	7/8"	10
ELL00019	W02747	1-1/8"	5
ELL00018	W02055	1-3/8"	5
ELL00050	W02063	1-5/8"	5
ELL00010	W02072	2-1/8"	1

Reducing Couplings (C x C)



Part #	Mfg #	Size	Pack Qty.
FTG00170	W01010	3/8" x 5/16"	50
CPL00355	W01019	1/2" x 3/8"	50
CPL00376	W01023	5/8" x 1/2"	50
CPL00883	W01029	3/4" x 5/8"	50
CPL00354	W01035	7/8" x 3/4"	25
BUS00225	W01049	1-1/8" x 7/8"	25
CPL00308	W01056	1-3/8" x 1-1/8"	10
CPL00356	W01064	1-5/8" x 1-3/8"	10
FTG00166	W01073	2-1/8" x 1-5/8"	10
CPL00885	W01063	1-5/8"	10

90° Long Radius Street Elbow (FTG x C)



Part #	Mfg #	Size	Pack Qty.
ELL00886	W02809	3/8"	50
ELL00215	W02817	1/2"	25
ELL00888	W02822	5/8"	25
ELL00889	W02828	3/4"	10
ELL00890	W02834	7/8"	10
ELL00891	W02847	1-1/8"	5
ELL00879	W02350	1-3/8"	5
ELL00205	W02355	1-5/8"	5
ELL00207	W02359	2-1/8"	1

Reducing Fittings (FTG x C)

Part #	Mfg #	Fitting Size	Coupling	Pack Qty.
FTG00841	W01306	3/8"	1/4"	50
BUS00066	W01312	1/2"	3/8"	50
FTG00003	W01315	5/8"	1/2"	25
FTG00844	W01320	3/4"	5/8"	25
BUS00484	W01325	7/8"	3/4"	25
BUS00352	W01337	1-1/8"	7/8"	25
CPL00027	W01343	1-3/8"	1-1/8"	10
BUS00004	W01350	1-5/8"	1-3/8"	10
BUS00014	W01358	2-1/8"	1-5/8"	10



Copper Fittings

45° Elbows (C x C)



Part #	Mfg #	Size	Pack Qty.
ELL00893	W03012	3/8"	50
ELL00933	W03021	1/2"	50
ELL00895	W03026	5/8"	25
ELL00896	W03030	3/4"	25
ELL00897	W03034	7/8"	10
ELL00898	W03044	1-1/8"	10
ELL00899	W03050	1-3/8"	10
ELL00900	W03055	1-5/8"	5

Tees (C x C x C)



Part #	Mfg #	Size	Pack Qty.
TEE00033	W04000	3/8"	50
TEE00143	W04001	1/2"	25
TEE00181	W04006	5/8"	25
TEE00140	W04017	3/4"	10
TEE00081	W04031	7/8"	10
TEE00102	W04048	1-1/8"	5
TEE00127	W04068	1-3/8"	5
TEE00845	W04084	1-5/8"	5
TEE00206	W40102	2-1/8"	1

Copper Tubing

Soft Copper Rolls (50ft.)

Part #	Mfg #	Description
CALL STORE	CALL STORE	1/4" X 50' COPPER ROLL
CALL STORE	CALL STORE	5/16" X 50' COPPER ROLL
CALL STORE	CALL STORE	3/8" X 50' COPPER ROLL
CALL STORE	CALL STORE	1/2" X 50' COPPER ROLL
CALL STORE	CALL STORE	5/8" X 50' COPPER ROLL
CALL STORE	CALL STORE	3/4" X 50' COPPER ROLL
CALL STORE	CALL STORE	7/8" X 50' COPPER ROLL
CALL STORE	CALL STORE	1-1/8" X 50' COPPER ROLL



Soft Copper Rolls (100ft.)

Part #	Mfg #	Description
CALL STORE	CALL STORE	3/8" X 100' COPPER ROLL
CALL STORE	CALL STORE	1/2" X 100' COPPER ROLL
CALL STORE	CALL STORE	5/8" X 100' COPPER ROLL
CALL STORE	CALL STORE	3/4" X 100' COPPER ROLL
CALL STORE	CALL STORE	7/8" X 100' COPPER ROLL
CALL STORE	CALL STORE	1-1/8" X 100' COPPER ROLL



Copper Tubing

ACR Copper (20ft. Sticks)

Part #	Mfg #	Description
CALL STORE	CALL STORE	3/8" ACR COPPER STICK - 20FT.
CALL STORE	CALL STORE	1/2" ACR COPPER STICK - 20FT.
CALL STORE	CALL STORE	5/8" ACR COPPER STICK - 20FT
CALL STORE	CALL STORE	3/4" ACR COPPER STICK - 20FT.
CALL STORE	CALL STORE	1/8" ACR COPPER STICK - 20FT.
CALL STORE	CALL STORE	7/8" ACR COPPER STICK - 20FT.
CALL STORE	CALL STORE	1-1/8" ACR COPPER STICK - 20FT.
CALL STORE	CALL STORE	1-3/8" ACR COPPER STICK - 20FT.
CALL STORE	CALL STORE	1-5/8" ACR COPPER STICK - 20FT.



Pre-Charged Linesets

Part #	Mfg #	Description
CALL STORE	CALL STORE	TUBE; 1/4 OD X 10 C/D CHARGED ; AC01010
CALL STORE	CALL STORE	TUBE; 3/8 OD X 10 C/D CHARGED ; AC02010
CALL STORE	CALL STORE	TUBE; 1/2 OD X 10 C/D CHARGED ; AC03010
CALL STORE	CALL STORE	TUBE; 5/8 OD X 10 C/D CHARGED ; AC04010
CALL STORE	CALL STORE	TUBE; 3/4 OD X 10 C/D CHARGED ; AC05010
CALL STORE	CALL STORE	TUBE; 7/8 OD X 10 C/D CHARGED ; AC06010
CALL STORE	CALL STORE	TUBE; 1 1/8OD X10 C/D CHARGED ; AC10010
CALL STORE	CALL STORE	TUBE; 1 3/8OD X10 C/D CHARGED ; AC12010
CALL STORE	CALL STORE	TUBE; 1 5/8OD X10 C/D CHARGED ; AC14010
CALL STORE	CALL STORE	TUBE; 2 1/8OD X10 C/D CHARGED ; AC20010
CALL STORE	CALL STORE	TUBE; 2 1/8OD X20 C/D CHARGED ; AC20020
CALL STORE	CALL STORE	TUBE; 2 5/8OD X10 C/D CHARGED ; AC24010
CALL STORE	CALL STORE	TUBE; 2 5/8OD X20 C/D CHARGED ; AC24020
CALL STORE	CALL STORE	TUBE; 3 1/8OD X10 C/D CHARGED ; AC30010
CALL STORE	CALL STORE	TUBE; 3 1/8OD X20 C/D CHARGED ; AC30020
CALL STORE	CALL STORE	TUBE; 3/8 OD X 20 C/D CHARGED
CALL STORE	CALL STORE	TUBE; 1/2 OD X 20 C/D CHARGED
CALL STORE	CALL STORE	TUBE; 5/8 OD X 20 C/D CHARGED
CALL STORE	CALL STORE	TUBE; 3/4 OD X 20 C/D CHARGED
CALL STORE	CALL STORE	TUBE; 7/8 OD X 20 C/D CHARGED
CALL STORE	CALL STORE	TUBE; 1 1/8OD X20 C/D CHARGED
CALL STORE	CALL STORE	TUBE; 1 3/8OD X20 C/D CHARGED
CALL STORE	CALL STORE	TUBE; 1 5/8OD X20 C/D CHARGED



Copper Tubing

HVAC Linesets

Part #	Liquid	Suction	Insul	Lth
KIT17303	3/8"	5/8"	1/2"	35
KIT17304	3/8"	5/8"	1/2"	50
KIT17004	3/8"	3/4"	1/2"	35
KIT16990	3/8"	3/4"	1/2"	50
KIT16961	3/8"	7/8"	1/2"	30
KIT16991	3/8"	7/8"	1/2"	35
KIT16962	3/8"	7/8"	1/2"	40
KIT16992	3/8"	7/8"	1/2"	50
KIT17301	3/8"	1 1/8"	1/2"	35
KIT17302	3/8"	1 1/8"	1/2"	50

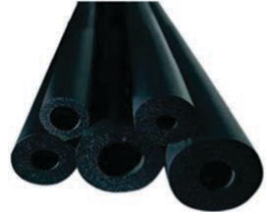


Tubing Insulation



1/2" Wall Thickness - Cut in 6' Sections

Part #	Mfg #	Tube OD	Wall Size	Case Qty.
INS02834	7-1238	3/8"	1/2"	75
INS02827	7-1212	1/2"	1/2"	66
INS02835	7-1258	5/8"	1/2"	50
INS02833	7-1234	3/4"	1/2"	40
INS02836	7-1278	7/8"	1/2"	35
INS02851	7-121-18	1-1/8"	1/2"	25
INS02828	7-121-38	1-3/8"	1/2"	20



3/4" Wall Thickness - Cut in 6' Sections

Part #	Mfg #	Tube OD	Wall Size	Case Qty.
INS02844	7-3438	3/8"	3/4"	40
INS02838	7-3412	1/2"	3/4"	35
INS02845	7-3458	5/8"	3/4"	24
INS02843	7-3434	3/4"	3/4"	23
INS02846	7-3478	7/8"	3/4"	20
INS02837	7-341-18	1-1/8"	3/4"	15



Linesets & Connectors

Standard Plain End Linesets



Part #	Mfg#	Liquid	Suction	Insulation	Length	Carton QTY	End Type	Type
KIT16961	061408301	3/8"	7/8"	1/2"	30	8	90 DEGREE BEND	STANDARD
KIT16962	061408401	3/8"	7/8"	1/2"	40	8	90 DEGREE BEND	STANDARD
KIT16990	061208500	3/8"	3/4"	1/2"	50	8	STRAIGHT END	STANDARD
KIT16991	061408350	3/8"	7/8"	1/2"	35	8	STRAIGHT END	STANDARD
KIT16992	061408500	3/8"	7/8"	1/2"	50	8	STRAIGHT END	STANDARD
KIT17004	061208351	3/8"	3/4"	1/2"	35	8	90 DEGREE BEND	STANDARD
KIT17301	061808350	3/8"	1-1/8"	1/2"	35	5	STRAIGHT END	STANDARD
KIT17302	061808500	3/8"	1-1/8"	1/2"	50	5	STRAIGHT END	STANDARD
KIT17303	061008350	3/8"	5/8"	1/2"	35	12	STRAIGHT END	STANDARD
KIT17304	061008500	3/8"	5/8"	1/2"	50	8	STRAIGHT END	STANDARD
KIT17593	061408350H	3/8"	7/8"	1/2"	35	8	STRAIGHT END	EZ-PULL
KIT17596	061408500H	3/8"	7/8"	1/2"	50	6	STRAIGHT END	EZ-PULL
KIT17583	061208350H	3/8"	3/4"	1/2"	35	8	STRAIGHT END	EZ-PULL
KIT17586	061208500H	3/8"	3/4"	1/2"	50	8	STRAIGHT END	EZ-PULL
KIT16980	061206500	3/8"	3/4"	3/8"	50	8	STRAIGHT END	STANDARD
KIT16981	061206250	3/8"	3/4"	3/8"	25	12	STRAIGHT END	STANDARD
KIT17001	061206350	3/8"	3/4"	3/8"	35	12	STRAIGHT END	STANDARD
KIT16978	061406500	3/8"	7/8"	3/8"	50	8	STRAIGHT END	STANDARD
KIT16982	061406250	3/8"	7/8"	3/8"	25	12	STRAIGHT END	STANDARD
KIT17002	061406350	3/8"	7/8"	3/8"	35	12	STRAIGHT END	STANDARD

Refrigerant Line Connectors



Part #	Mfg #	Description
CON01759	66731	CONNECTOR; NOKINK 1/4 INCH FLEXIBLE MINISPLIT REFRIGERANT LINE CONNECTOR
CON01760	66733	CONNECTOR; NOKINK 3/8 INCH FLEXIBLE MINISPLIT REFRIGERANT LINE CONNECTOR
CON01761	66737	CONNECTOR; NOKINK 1/2 INCH FLEXIBLE MINISPLIT REFRIGERANT LINE CONNECTOR
CON01762	66735	CONNECTOR; NOKINK 5/8 INCH FLEXIBLE MINISPLIT REFRIGERANT LINE CONNECTOR



Linesets & Connectors

Line Set Protection

Part #	Mfg #	Description
DUC01485	84125	DUCT; 12' IVORY WALL DUCT KIT LD122 (LW, LK, LEN, LJX2, LDX12') 4 1/2"
DUC01487	84025	DUCT; 12' IVORY WALL DUCT KIT LD92 (LW, LK, LEN, LJX2, LDX12') 3 1/2"



Thermostat Wire

Part #	Mfg #	Description
WIR02574	553030507	18GA 3 STRAND SPOOLWIRE; T-STAT WIRE, 18/3, 500 FOOT SPOOLS, 18 AWG UL CL2, CUL CM OR CMH/FT1
WIR02576	553050407	18GA 5 STRAND SPOOLWIRE; T-STAT WIRE, 18/5, 250 FOOT SPOOLS, 18 AWG UL CL2, CUL CM OR CMH/FT1
WIR02579	553080407	18GA 8 STRAND SPOOLWIRE; T-STAT WIRE, 18/8, 250 FOOT SPOOLS, 18 AWGUL CL2, CUL CM OR CMH/FT1



Part #	Mfg #	Description
18-3B	47115807	18/3 SOLID CL2 THERMOSTAT CABLE BROWN 500' SPEEDBAG
18-5B	47130907	18/5 SOLID CL2 THERMOSTAT CABLE BROWN 250' SPEEDBAG
18-8B	47160907	18/8 SOLID CL2 THERMOSTAT CABLE BROWN 250' SPEEDBAG



Other sizes of thermostat wire available. Please contact your local Trane Supply store.



PVC Pipe & Fittings



3/4" PVC Fittings

Part #	Mfg #	Description
PIP01725	5-401	PIPE, 3/4" PVC CONDENSATE PIPE, 10' LENGTHS, STRAIGHT END, SCH. 40
FTG00955	5-408	FITTING; PVC SCHEDULE 40 FITTING, 3/4 IN. P TRAP
FTG01148	5-417007	FITTING; PVC SCHEDULE 40 FITTING, 3/4, 45 DEG ELL (SLIP X SLIP)
FTG01147	5-406007	FITTING; PVC SCHEDULE 40 FITTING, 3/4, 90 DEG ELL
CAP00978	5-448007	CAP; 3/4 INCH SCHEDULE 40 PVC CAP (FIPT)
FTG00962	5-429007	FITTING; PVC SCHEDULE 40 FITTING, 3/4 COUPLING (SLIP X SLIP)
FTG01149	5-435007	FITTING; PVC SCHEDULE 40 FITTING, 3/4 IN. FEMALE ADAPTOR (SLIP X FIPT)
FTG00960	5-436007	FITTING; PVC SCHEDULE 40 FITTING, 3/4 IN MALE ADAPTOR (SLIP X MIPT)
FTG00957	5-401007	FITTING; PVC SCHEDULE 40 FITTING, 3/4 TEE
ELL01020	5-410007	ELBOW; 3/4 INCH 90 STREET ELL, SCH 40 PVC, MIPT X S
ELL01019	5-407007	ELBOW; SCHEDULE 40 PVC FITTING, 90 DEG ELBOW, 3/4 INCH, SLIP X FPT
FTG00969	5-409007	FITTING; 3/4 INCH PVC SCHEDULE 40 90 STREET ELL
5-474007	5-474007	FITTING; PVC SCHEDULE 40 PRESSURE FITTING, 3/4 INCH ADAPTER

1" PVC Fittings

Part #	Mfg #	Description
ELL00992	5-406010	ELBOW; 1 INCH 90 ELL, SLIP X SLIP
CPL01047	5-429010	COUPLING; 1 INCH SLIP X SLIP, SCH. 40 PVC
ADP01078	5-435010	ADAPTER; 1 INCH FEMALE SLIP X FIPT ADAPTER, SCH. 40 PVC
ADP01080	5-436010	ADAPTER; 1 INCH MALE, MIPT X SLIP ADAPTER, SCH. 40 PVC
FTG01015	701-032	FITTING; HOSE MENDER PACKAGED NYLON FITTING, 3/8 BARB, 5 PER PACK

PVC Pipe PVC Glues & Cleaners



Part #	Mfg #	Description
SLT00076	55901	SEALANT; GENE 404L PVC LOW VOC SOLVENT CEMENT, 1/4 PINT
SLT00077	55902	SEALANT; GENE 404L PVC LOW VOC SOLVENT CEMENT, 1/2 PINT
CHM00511	530-30890	CHEMICAL; OATEY RAIN-N-SHINE BLUE COLORED PVC CEMENT 4 OZ CAN

Condensate Switches

Safe-T-Switch®



Part #	Mfg #	Description
97632	97632	SWITCH; INLINE CONDENSATE SWITCH, SAFE-T-SWITCH SS1
SWT03233	SS-2	SWITCH; SECONDARY LINE CONDENSATE SWITCH, SAFE-T-SWITCH SS2
97647	97647	SWITCH; SAFE-T-SWITCH SS3, PRIMARY OR AUXILIARY DRAIN PAN SWITCH
97693	97693	SAFE-T-SWITCH SS500EP; REMOTE CONDENSATE ELECTRONIC PROBE PAN SWITCH PLENUM RATED
97622	97622	SWITCH; ELECTRIC SWITCH FOR MINISPLIT; RECTORSEAL SS610E - 97622

AquaGuard



Part #	Mfg #	Description
96100	96100	SWITCH; MAGNETIC FLOAT SWITCH FOR METAL DRAIN PANS, 5 AMP, 24 VOLT AC SENSOR
SEN02307	96110	SENSOR; ELECTRIC IN-LINE WATER SENSOR AND ACCESS PORT FOR PRIMARY DRAIN LINES WITH BONUS SECONDARY SENSOR
96124	96124	SENSOR; COMBINED ELECTRIC SENSORS FOR AUXILIARY PORT PRIMARY PAN AND A SECONDARY DRAIN PAN WITH TIME DELAY
96128	96128	SENSOR; COMBINED ELECTRONIC SENSORS FOR AUXILIARY PORT PRIMARY PAN AND SECONDARY DRAIN PAN

Wet Switch



- Secondary Drain Pan Switch
- Hydrophilic Pad
- Integral Feet
- Stainless Steel Sensor Array
- Solid State
- Epoxy Encapsulated Electronics
- DT Relay
- 24v
- Multiple Unit Connectivity

Part #	Mfg #	Description
SWT02467	WS-1	SWITCH; WET SWITCH FLOOD DETECTOR, 24 VAC, 2A



Condensate Switches

Overflow Safety Switches



Part #	Mfg #	Description
ACS-2-18	ACS-2-18	SWITCH; ACS-2 CONDENSATE OVERFLOW SAFTEY SWITCH WITH 18 INCH LEADS
ACS-2-72	ACS-2-72	SWITCH; ACS-2 CONDENSATE OVERFLOW SAFETY SWITCH WITH 72 INCH LEADS
ACS-4	ACS-4	SWITCH; ACS-4 CONDENSATE OVERFLOW SAFETY SWITCH WITH 72 INCH LEADS

Condensate Pumps

Classic Style



Part #	Mfg #	Description
VCMA-15ULS-115V	VCMA-15ULS-115V	PUMP; CONDENSATE REMOVAL, 115V, 1/50HP, 65GPH AT 1 FOOT, 1/2GAL TANK, 15FT HEAD W/SAFTEY SWITCH
VCMA-20ULS-115V	VCMA-20ULS-115V	PUMP; CONDENSATE REMOVAL, 115V, 1/30HP, 80GPH AT 1 FOOT, 1/2GAL TANK, WITH SAFTEY SWITCH
VCMA-20ULST-230	VCMA-20ULST-230	PUMP; CONDENSATE REMOVAL, 230V,1/30HP, 80 GPH AT 1 FOOT WITH SAFETY SWITCH

NXTGen Premium



Part #	Mfg #	Description
VCMX-20ULST115V	VCMX-20ULST115V	PUMP; NXTGEN CONDENSATE, 115V, WITH SAFETY SWITCH, 20 FT OF 3/8" TUBING
VCMX-20ULST230V	VCMX-20ULST230V	PUMP; NXTGEN CONDENSATE, 230V, WITH SAFETY SWITCH, 6 FT CORD & TUBING
VCMX-20ULS-C115	VCMX-20ULS-C115	PUMP; NXTGEN CONDENSATE, 115V, WITH SAFETY SWITCH, ANTI-SWEAT TANK SLEEVE, 6 FT CORD

Condensate Pumps

Ductless Pumps



Part #	Mfg #	Description
EC-1-115V	EC-1-115V	MINI PUMP FOR WALL MOUNTS AND DUCTLESS MINI SPLITS, 115V, EC-1
EC-1-208-230V	EC-1-208-230V	MINI PUMP FOR WALL MOUNTS AND DUCTLESS MINI SPLITS, 208-230V, EC-1
EC-1K-115V	EC-1K-115V	EC-1K MINI CONDENSATE REMOVAL PUMP KIT, 115V, 60HZ, CCSAUS
EC-1K-208-230V	EC-1K-208-230V	EC-1K MINI CONDENSATE REMOVAL PUMP KIT, 208-230V, 50/60HZ, CCSAUS



Accessories

Part #	Mfg #	Description
TUB10611	7-12	TUBE; CLEAR VINYL TUBING, 1/2IN ID (100 FT ROLL)
ADP01017	701-043	ADAPTER; NYLON ADAPTER, 3/4 MPT X 3/8 BARB, 2 PER PACK

Installation Tools & Accessories



Part #	Mfg #	Description
BAS02047	87762	BASE; SLIMDUCT PR-351N-M PLAROCK 4 INCH RISER, 18 IN. LONG
BRK04558	97705	BRACKET; MIGHTY BRACKET MINI-SPLIT INSTALLATION SUPPORT TOOL
CHM01364	81880	CHEMICAL; DUCT SEAL COMPOUND 1 LB
CPL01043	19173	COUPLING; YELLOW JACKET QUICK COUPLER, 5/16 INCH FEMALE QC X 1/4 INCH MALE FL, 19173
SLV00202	83017	SLEEVE; SLIMDUCT NFP-75 WALL SLEEVE, 3 IN X 5 IN - 7IN

Installation Tools & Accessories



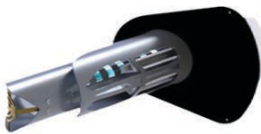
Part #	Mfg #	Description
TOL02259	D213-9NE	TOOL; 9 IN. HIGH-LEVERAGE SIDE-CUTTING PLIERS
TOL03006	57000	TOOL; TORQUE WRENCH, MICRO-ADJ SW DRIVE RATCHET 15-75 FT-LB, 57000
TOL03379	32527	TOOL; 11-IN-1 SCREWDRIVER/NUT DRIVER/SCHRADER VALVE TIP WITH CUSHION GRIP(NEW)
TOL03455	88904	TOOL; 1/8" - 1-3/8" PROFESSIONAL TUBING CUTTER
TOL03763	93225	TOOL; 25 FT X 1 IN TAPE MEASURE POWER RETURN, DOUBLE MAGNETIC HOOK
TOL04523	85091	TOOL; POWER CONDUIT REAMER

Air Purification



Guardian Air PHI

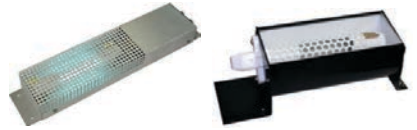
Part #	Mfg #	Description	CFM Coverage
QRP5	QRP-5	UNIT; GUARDIAN QR PHI 5 CELL QUICK RELEASE UNIT 24V	300 - 1200
QRP9	QRP-9	UNIT; GUARDIAN QR PHI 9 CELL QUICK RELEASE UNIT 24V	1000 - 6500
QRP14	QRP-14	UNIT; GUARDIAN QR PHI 14 CELL QUICK RELEASE UNIT 24V	10000 - 18000



Guardian Air REME

Part #	Mfg #	Description	CFM Coverage
REMEH	REME-H	UNIT; REME HALO 9 CELL QUICK RELEASE ADJUSTABLE UNIT 24V	1000 - 6500

Guardian Air Plug-In, Mini and PTAC



Part #	Mfg #	Description	CFM Coverage
HVACMINIGA	HVACMINIGA	CELL; HVAC MINI PHI CELL 12V, HVAC-MINI-GA	250 - 1000
UNVPTAC	UNVPTAC	UNIT; UNV-PTAC UNIVERSAL PTAC UNIT PTAC-HVAC-PHI	250 - 500

Mini Split PHI & Magnetic Pkg PHI



Part #	Mfg #	Description	CFM Coverage
MSPLITPHI230	MINI SPLIT-HVAC-PHI-230	MINI SPLIT UNIT 230V 50HZ 60 HZ, 600-1200 CFM	600 - 1200
PHIPKG524	PHI-PKG5-24	PHI-PKG5-24 HVAC-MINI 5 PACKAGE UNIT - 24VAC	250 - 1200
PHIPKG924	PHI-PKG9-24	PHI-PKG9-24 HVAC MINI 9 PACKAGE UNIT 24VAC	1200 - 6500
PHIPKG1424	PHI-PKG14-24	PHI-PKG14-24 HVAC MINI 14 PACKAGE UNIT	3000 - 8000



UV Stick Light

- For coil disinfection

Part #	Mfg #	Description
BQRTS24	BLU-QR-TS-24	UNIT; BLU-QR-TS-24 TWIN STICK LAMP
BLUQR	BLU-QR	UNIT; UV STICK LIGHT, BLU-QR - ONE YEAR LAMP
BLUQR2	BLUQR2	UNIT; UV STICK LIGHT, BLU-QR2 - TWO YEAR LAMP

Bi-Polar Ionizers



Part #	Mfg #	Description
QUADDM	QUAD-DM	UNIT; IN DUCT BI POLAR IONIZER
QUADMS	QUAD-MS	UNIT; MINI SPLIT BI POLAR IONIZER

UV Sanitation



Remediation

Part #	Mfg #	Description	Fan Volume (CFM)
RRU16	RRU-16	UNIT; RRU-16 RAPID RECOVERY UNIT 110V 60HZ	120
RRU16DS	RRU-16-DS	UNIT; RRU-16-DS RAPID RECOVERY UNIT 110V 60HZ WITH DUCT SANITATION KIT	120

Drain Cleaner

Deslimer

Part #	Mfg #	Description
DS1	DS-1	UNIT; AC DRAIN PUMP - DESLIMER, DS-1



Fin Saver

Part #	Mfg #	Description
FS375	FS375	UNIT; FIN SAVER 0.375 INCH, FS375
FS500	FS500	UNIT; FIN SAVER 0.5 INCH, FS500
FS625	FS625	UNIT; FIN SAVER 0.625 INCH, FS625
FS750	FS750	UNIT; FIN SAVER 0.75 INCH, FS750
FS875	FS875	UNIT; FIN SAVER 0.875 INCH, FS875
FS1125	FS1125	UNIT; FIN SAVER 1.125 INCH, FS1125





Ductboard

Mat-Faced Micro-Aire® Type 475 & Type 800

Durable Airstream Surface

Mat-Faced Micro-Aire exhibits superior toughness compared to standard fiber glass duct board. It provides increased resistance to damage that can occur from in-shop handling, fabrication, jobsite shipping, and installation.

“Friendlier Feel”

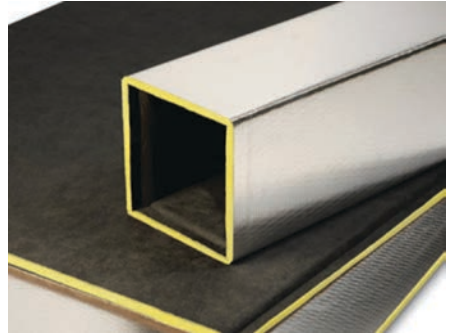
The smooth mat facing creates a friendlier surface for fabrication and installation, and reduces exposure to normal construction dust.

Quiet Operation

Fabricated Mat-Faced Micro-Aire duct systems noticeably decrease the audibility of crosstalk, equipment noise, and eliminates the sounds associated with the expansion and contraction of sheet metal duct systems.

Will Not Support Microbial Growth

Treated with an EPA-registered antimicrobial agent for HVAC applications to resist potential growth of fungus or bacteria on the airstream surface.



Duct Wrap

Microlite EQ Formaldehyde-free™ duct wrap insulation is a brown, lightweight, highly resilient, blanket-type thermal insulation. The insulation blanket is manufactured from rotary-process fiberglass bonded with a resin made primarily from rapidly renewable plant-based materials.



Available Forms

Microlite EQ Formaldehyde-free™ insulation is available in a variety of densities, thicknesses and roll lengths. It is supplied with an FSK (foil-scrim-kraft) vapor barrier facing to meet installed performance requirements, with a 2” (51 mm) stapling tab.

Uses

Microlite EQ insulation is recommended as thermal insulation for the exterior of HVAC systems or other spaces or surfaces where temperature control is required.

Availability and pricing varies by region. Please contact your local Trane Supply store.



Duct Liner

Spiracoustic Plus™ Duct liner

is specifically engineered to provide very high acoustical & thermal performance in round air ducts of virtually any size. Spiracoustic Plus duct liner has **factory-made, evenly spaced kerfs** to allow the material to conform to the inside diameter of round air ducts. **Please call for a detailed quote!**

Linacoustic RC insulation

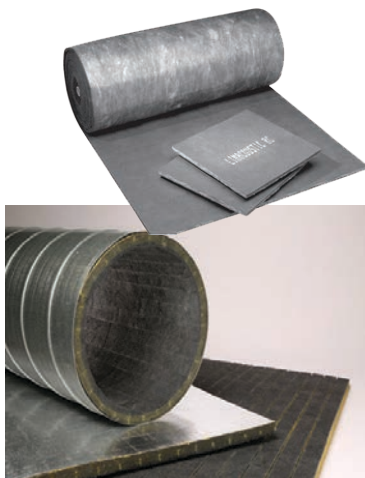
Flexible duct liner made from strong, glass fibers bonded with a thermosetting resin. The airstream surface is protected with exclusive Reinforced Coating system, combining state-of-the-art Permacote® acrylic coating with a flexible glass mat reinforcement to provide a smooth airstream surface.

Will Not Support Microbial Growth

Formulated with an immobilized EPA-registered protective agent to protect the coating from potential growth of fungi and bacteria.

Linacoustic RC Duct Liner Notes:

- Linacoustic RC duct liner is available in widths between 34"–36", 46"–48" and 56"–61" in 1/4" increments. Non-stock widths require a minimum special order quantity (includes widths to fit 6' coil line ducts) and may require up to four weeks lead time.
- Special roll lengths to 200' are available in some thicknesses and widths. Non-stock sizes require a minimum special order quantity and may require up to four weeks lead time.



Availability and pricing varies by region. Please contact your local Trane Supply store.





Add to your favorites! www.TraneSupply.com

- Advanced search and filtering
- Up-to-date pricing & local availability
- Easy ordering and pickup
- Find nearest store
- Log in to your ComfortSite account



For more convenience, download the
Trane 360° Mobile App to your smartphone today!

Available on the App Store and Google Play.



Learn more

Let us support your HVAC products, systems and services with a reliable, energy efficient solution from Trane Supply. For more information or to learn how we can help you ensure optimal climate conditions with all of your customers, please contact your local Trane Supply team member.



Ingersoll Rand (NYSE:IR) advances the quality of life by creating comfortable, sustainable and efficient environments. Our people and our family of brands—including Club Car®, Ingersoll Rand®, Thermo King® and Trane®—work together to enhance the quality and comfort of air in homes and buildings; transport and protect food and perishables; and increase industrial productivity and efficiency. We are a \$13 billion global business committed to a world of sustainable progress and enduring results.

