



# Product Bulletin

---

**STYLUS™**

**MINI-SPLIT SYSTEM AIR CONDITIONING, 1-5 TONS  
CONVERTIBLE MODELS, 50 Hz**



**Air Handling Models**

MCX512EB  
MCX518EB  
MCX524EB  
MCX536EB  
MCX042EB  
MCX048EB  
MCX060EB

---

**MCX5-PRC804-EN  
November 1998**



# Table of Contents

---

<b>Features and Benefits</b> .....	<b>3</b>
<b>System Performance</b> .....	<b>4</b>
<b>Model Nomenclature</b> .....	<b>5</b>
<b>General Data</b>	
<b>MCX</b> .....	<b>6</b>
<b>TTB5</b> .....	<b>8</b>
<b>TTA</b> .....	<b>10</b>
<b>TTK</b> .....	<b>11</b>
<b>Performance Data</b>	
<b>TTB5/MCX</b> .....	<b>14</b>
<b>TTA/MCX</b> .....	<b>22</b>
<b>TTK/MCX</b> .....	<b>28</b>
<b>System Wiring Diagrams</b> .....	<b>40</b>
<b>Dimensional Data</b> .....	<b>41</b>



## Features and Benefits

---



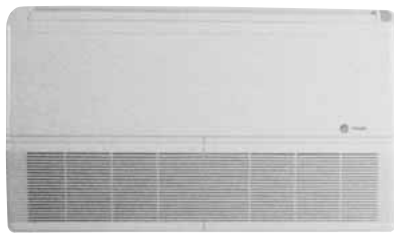
### MCX AIR HANDLER

#### Features:

- L-Shaped Drain Pan
- Insulation— Closed Cell Foam
- Choice of Control and Electric Heat Options
- Models with Air Sweep Available

#### Benefits:

- Effectively drains condensate regardless of the installed position of the air handler
- Provides clean, dust-free airflow
- Allows for the best selection of features to meet your needs



### CONDENSING UNITS

#### Features:

- Powder Paint Finish
- Fully Charged with R-22
- Innovative Compressor

#### Benefits:

- Full covering of all edges and a uniform paint finish
- For up to 25 feet (7.5 meters) of piping
- The benefit of Trane's technology development and expertise in compressors.



TTK

MCX5-PRC804-EN



TTA



TTB



# System Performance



Outdoor Unit	Stylus Indoor Unit	Cooling Capacity 95 F Indoor			
		MBH	KW	CFM	CMH
TTK512PB00A	MCX512EB_F/G	12.3	3.6	400	680
TTK512LB00B	MCX512EB_F/G	12.3	3.6	400	680
TTK518LB00B	MCX518EB_F/G	18.3	5.4	475	808
TTK524LB00C	MCX524EB_F/G	24.5	7.2	675	1448
TTK530KB00B	MCX536EB_F	31.7	9.3	915	1556
TTK536KB00B	MCX536EB_F	36.9	10.8	915	1556
TTK536KD00B	MCX536EB_F	36.9	10.8	915	1556
TTK042KD00A	MCX042EB_A	42.1	12.3	1245	2117
TTK048KD00C	MCX048EB_A	48.2	14.1	1200	2040
TTK060KD00C	MCX060EB_A	56.0	16.4	1315	2236
TTB510CA00A	MCX512EB_F/G	13.6	3.98	400	680
TTB515CA00A	MCX518EB_F/G	15.6	4.56	475	808
TTB520CA00A	MCX518EB_F/G	18.4	5.39	475	808
TTB520CA00A	MCX524EB_F/G	20.2	5.90	675	1148
TTB524CA00A	MCX524EB_F/G	24.8	7.27	675	1148
TTB530CA00A	MCX536EB_F	31.8	9.29	915	1556
TTB536CA00A	MCX536EB_F	37.0	10.82	915	1556
TTA030CD00A	MCX536EB_F	32.0	9.4	915	1556
TTA040CD00A	MCX042EB_A	47.0	13.57	1245	2117
TTA050CD00A	MCX048EB_A	55.7	16.12	1200	2040
TTA060CD00A	MCX060EB_A	69.7	20.23	1315	2236

MCX-E Models available with optional electric heat, and factory wired or wireless infrared controls.



# Model Nomenclature

---

M   C   X   5   12   E   B   0   R   J  
1   2   3   4   5,6   7   8   9   10   11

## Digit 1

M = Mini-Split

## Digit 2

C = Cooling Only

## Digit 3 - Configuration

X = Convertible

W = High Wall

D = Concealed

V = Tall Floor

C = Cassette

## Digit 4 - Refrigerant Connection

7 = Quick connect

5 = Flare

0 = Sweat (Braze)

## Digit 5,6 - Nominal Capacity

12 = 12 MBH

18 = 18 MBH

24 = 24 MBH

30 = 30 MBH

36 = 36 MBH

42 = 42 MBH

48 = 48 MBH

60 = 60 MBH

## Digit 7

E = Development Sequence

## Digit 8 - Voltage

B = 220-240/50/1

D = 380-415/50/3

1 = 200-240/60/1

4 = 460/60/3

## Digit 9 - Electric Heater

0 = 0 kW

B = 3.5 kW

E = 2 kW

F = 2.5 kW

G = 3 kW

H = 4 kW

J = 5 kW

K = 6 kW

L = 7 kW

## Digit 10 - Thermostat Option

R = Wireless Infrared Remote Control

W = Wired Control

## Digit 11

J = Design Change



# General Data

## Product Specifications

Indoor Units	MCX512EB0-G MCX512EBE-O(*)	MCX518EB0-G MCX518EBF-O(*)	MCX524EB0-G MCX524EBB-O(*)	MCX536EB0-F MCX536EBJ-N(*)
<b>Power Conn. - Volts/Ph/Hz</b>	220-240/1/50	220-240/1/50	220-240/1/50	220-240/1/50
<b>Fuse Size Max (amps)</b>	Local Code	Local Code	Local Code	Local Code
<b>Indoor Coil - Type</b>	Slit Fin	Slit Fin	Slit Fin	Slit Fin
No. Rows	2	3	3	4
Fins per in (254 mm)	15	15	14	16
Coil Face Area (ft <sup>2</sup> ) (m <sup>2</sup> )	2.1 (0.19)	2.1 (0.19)	2.8 (0.26)	3.45 (0.32)
Coil Tube Size (in)(mm)	<sup>3</sup> / <sub>8</sub> (9.5)	<sup>3</sup> / <sub>8</sub> (9.5)	<sup>3</sup> / <sub>8</sub> (9.5)	<sup>3</sup> / <sub>8</sub> (9.5)
Refrigerant Control	Capillary Tube	Capillary Tube	Capillary Tube	Capillary Tube
Drain Connections (in)(mm)	<sup>3</sup> / <sub>4</sub> (19)	<sup>3</sup> / <sub>4</sub> (19)	<sup>3</sup> / <sub>4</sub> (19)	<sup>3</sup> / <sub>4</sub> (19)
<b>Indoor Fan - Type</b>	Forward Curved Centrifugal			
Dia./Width-(in) - w/elec. heat	6x7	6x7	6x8	6x7
Dia./Width-(mm)	152x178	152x178	152x203	152x178
Dia./Width-(in)(*) - w/o elec. heat	5x8	5x8	6x8	6x7
Dia./Width-(mm)(*)	127x203	127x203	152x203	152x178
Qty. Used	2	2	2	4
Type Drive-No. Speeds	Direct-3	Direct-3	Direct-3	Direct-3
Air flow (Hi/Med/Lo)				
CFM @ 0.0 in. w.g.	400/350/300	475/400/325	600/505/400	750/685/615
CMH @ 0.0 mm w.g.	680/595/510	810/680/555	1022/858/680	1274/1164/1045
No. Motors (HP)-(KW)	1(1/20)-(0.037)	1(1/20)-(0.037)	1(1/10)-(0.075)	2(1/20)-(0.037)
Motor Speed (RPM)-(RPS)	1075-17.9	1200-20.0	1215-20.3	1300-21.7
Volts/Ph/Hz	220/1/50	220/1/50	220/1/50	220/1/50
R.L. Amps	0.36	0.42	0.56	2x0.54
L.R. Amps	0.48	0.59	0.67	2x0.89
<b>Electric Heater Data (*)</b>				
Heater Rating (KW)	2.0	2.5	3.5	5.0 (2 elements)
Heater R.L. Amps	9.1	11.4	15.9	22.7
MCA	11.8	14.8	20.6	29.7
<b>Filters - Furnished</b>	Yes	Yes	Yes	Yes
Total Quantity	3	3	3	4
Quantity per size (H x W x D)				
(in)	1-8.0 x 9.8 x 0.19	1-8.0 x 9.8 x 0.19	1-8.0 x 19.7 x 0.19	2-8.0 x 14.8 x 0.19
(mm)	2-8.0 x 14.1 x 0.19	2-8.0 x 14.1 x 0.19	2-8.0 x 14.1 x 0.19	2-8.0 x 14.1 x 0.19
	1-203 x 250 x 5	1-203 x 250 x 5	1-203 x 500 x 5	2-203 x 376 x 5
	2-203 x 357 x 5	2-203 x 357 x 5	2-203 x 357 x 5	2-203 x 357 x 5
<b>Dimensions (H x W x D)</b>				
Crated (shipping) (in)	27.1 x 44.7 x 11.0	27.1 x 44.7 x 11.0	27.1 x 54.6 x 12.0	27.1 x 64.4 x 12.0
(mm)	687 x 1136 x 279	687 x 1136 x 279	687 x 1386 x 304	687 x 1636 x 304
Uncrated (in)	24.7 x 42.7 x 11.0	24.7 x 42.7 x 11.0	24.7 x 52.6 x 10.5	24.7 x 52.6 x 10.5
(mm)	627 x 1085 x 243	627 x 1085 x 243	627 x 1335 x 268	627 x 1335 x 268
<b>Weight - lbs. (kg.)</b>				
Shipping (Crated)				
Without Elec. Htr.	79 (36)	86 (39)	101 (46)	136 (62)
With Elec. Htr.	82 (37)	90 (41)	104 (47)	141 (64)
Net (Uncrated)				
Without Elec. Htr.	73 (33)	79 (36)	90 (41)	125 (57)
With Elec. Htr.	75 (34)	82 (37)	93 (42)	130 (59)

11th Digit "F or N" = Models WITHOUT Air Sweep Feature 11th Digit "G or O" = Models WITH Air Sweep Feature  
 (\*) Models with electric heaters have an alphabetic letter in the ninth digit, i.e., B, E, F, and J  
 MCA - Minimum Circuit Ampacity; calculated as follows: 125% of heater R.L. Amps plus the fan motor R.L. Amps.



# General Data

## Product Specifications

Indoor Units	MCX042EB0RA MCX042EB0WA MCX042EBJRA(*) MCX042EBJWA(*)	MCX048EB0RA MCX048EB0WA MCX048EBKRA(*) MCX048EBKWA(*)	MCX060EB0RA MCX060EB0WA MCX060EBLRA(*) MCX060EBLWA(*)
<b>Power Conn. - Volts/Ph/Hz</b>	220-240/1/50	220-240/1/50	220-240/1/50
<b>Fuse Size Max (amps)</b>	Local Code	Local Code	Local Code
<b>Indoor Coil - Type</b>	Slit Fin	Slit Fin	Slit Fin
No. Rows	3	4	4
Fin per in.	16	15	17
Coil Face Area (ft. <sup>2</sup> )	4.13	4.13	4.82
Coil Tube Size (in.)	<sup>3</sup> / <sub>8</sub>	<sup>3</sup> / <sub>8</sub>	<sup>3</sup> / <sub>8</sub>
Refrigerant Control	Capillary Tube	Capillary Tube	Capillary Tube
Drain Connections (in.)	<sup>3</sup> / <sub>4</sub>	<sup>3</sup> / <sub>4</sub>	<sup>3</sup> / <sub>4</sub>
<b>Indoor Fan - Type</b>	-----Forward Curved Centrifugal-----		
Dia. / Width - (in.)	6 x 9	6 x 9	6 x 9
Dia. / Width-(mm)	152 x 229	152 x 229	152 x 229
Qty. Used	4	4	4
Type Drive - No. Speeds	Direct - 3	Direct - 3	Direct - 3
Air Flow (Hi/Med/Lo)			
CFM @ 0.0 in. w.g.	1200/1050/950	1200/1050/950	1350/1100/975
CMH @ 0.0 mm w.g.	2040/1785/1615	2040/1785/1615	2295/1870/1658
No. Motors (HP)-(KW)	2 (1/10)-(0.074)	2 (1/10)-(0.074)	2 (1/10)-(0.074)
Motor Speed (RPM)-(RPS)	1450-24.1	1450-24.1	1450-24.1
Volts/Ph/Hz	220/1/50	220/1/50	220/1/50
R.L. Amps	2 x 0.69	2 x 0.69	2 x 0.69
L.R. Amps	2 x 2.28	2 x 2.28	2 x 2.28
<b>Electric Heater Data (*)</b>			
Heater rating (kW)	5 (2 elements)	6 (2 elements)	7 (2 elements)
Heater R.L. Amps	22.7	27.2	31.8
MCA	30.1	35.7	41.5
<b>Filter - Furnished</b>	Yes	Yes	Yes
Total Quantity	10	10	12
Quantity per size (H x W x D)			
(in.)	2 - 8.0 x 14.1 x 0.19 2 - 8.0 x 19.7 x 0.19 6 - 6.3 x 8.2 x 0.19	2 - 8.0 x 14.1 x 10.19 2 - 8.0 x 19.7 x 0.19 6 - 6.3 x 8.2 x 0.19	2 - 8.0 x 14.1 x 0.19 2 - 8.0 x 19.7 x 0.19 1 - 8.0 x 10.2 x 0.19 7 - 6.3 x 8.2 x 0.19
(mm.)	2 - 203 x 357 x 5 2 - 203 x 500 x 5 6 - 160 x 210 x 5	2 - 203 x 357 x 5 2 - 203 x 500 x 5 6 - 160 x 210 x 5	2 - 203 x 357 x 5 2 - 203 x 500 x 5 1 - 203 x 250 x 5 7 - 160 x 210 x 5
<b>Dimension (HxWxD)</b>			
Crated (shipping) (in)	27.3 x 74.3 x 12.6	27.3 x 74.3 x 12.6	27.3 x 84.1 x 12.6
(mm)	694 x 1886 x 319	694 x 1886 x 319	694 x 2136 x 319
Uncrated (in)	24.1 x 72.2 x 10.6	24.1 x 72.2 x 10.6	24.1 x 72.2 x 10.6
(mm)	612 x 1835 x 268	612 x 1835 x 268	612 x 1835 x 268
<b>Weight - (kg)</b>			
Shipping (crated)			
Without Elec. Htr.	79	82	92
With Elec. Htr.	81	84	95
Net (uncrated)			
Without Elec. Htr.	72	75	84
With Elec. Htr.	74	77	87

(\*) Models with electric heaters have an alphabetic letter in the ninth digit, i e, J, K, and L  
MCA - Minimum Circuit Ampacity; calculated as follows: 125% of heater R.L. Amps plus the fan motor R.L. Amps.



# General Data

## Product Specifications<sup>1,2</sup>

Outdoor Units	TTB510CA00A	TTB515CA00A	TTB520CA00A
<b>Power Conns. - Volts/Ph/Hz</b>	220-230/1/50	220-230/1/50	220-230/1/50
<b>Fuse Size - max. amps</b>	Per Local Code	Per Local Code	Per Local Code
<b>Compressor</b>	Climatuff <sup>®</sup>	Climatuff <sup>®</sup>	Climatuff <sup>®</sup>
No. Used — No. Speeds	1 — 1	1 — 1	1 — 1
Volts/Ph/Hz	200-230/1/50	200-230/1/50	200-230/1/50
R.L. Amps <sup>3</sup>	7.7	7.7	10.8
L.R. Amps	45	45	52
<b>Outdoor Fan - Type</b>	Propeller	Propeller	Propeller
Dia. — In. (mm) — No. Used	13.7 (348) — 1	13.7 (348) — 1	13.7 (348) — 1
Type Drive — No. Speeds	Direct — 1	Direct — 1	Direct — 1
CFM @ 0.0 in. w.g.	1250	1250	1250
CMH @ 0.0 mm w.g.	2123	2123	2123
No. Motors	1	1	1
Motor HP (KW)	<sup>1</sup> / <sub>8</sub> (.093)	<sup>1</sup> / <sub>8</sub> (.093)	<sup>1</sup> / <sub>8</sub> (.093)
Motor Speed (RPM)	1620	1620	1620
Volts/Ph/Hz	200-230/1/50	200-230/1/50	200-230/1/50
F.L. Amps	1.1	1.1	1.1
<b>Outdoor Fan — Type</b>	Spine Fin™	Spine Fin™	Spine Fin™
Rows	1	1	1
Fins/in. (mm)	24 (1)	24 (1)	24 (1)
Face Area — ft <sup>2</sup> (m <sup>2</sup> )	6.62 (.62)	6.62 (.62)	6.62 (.62)
Tube Size — in. (mm)	<sup>3</sup> / <sub>8</sub> (10)	<sup>3</sup> / <sub>8</sub> (10)	<sup>3</sup> / <sub>8</sub> (10)
<b>Refrigerant</b>			
Lbs. of R-22 <sup>4</sup>	2 lbs., 6 oz.	3 lbs., 3 oz.	3 lbs., 10 oz.
Kg. of R-22 <sup>4</sup>	1.08	1.45	1.64
Factory Supplied	Yes	Yes	Yes
Line Size — O.D. Gas <sup>5</sup> — in. (mm)	<sup>5</sup> / <sub>8</sub> (16)	<sup>5</sup> / <sub>8</sub> (16)	<sup>3</sup> / <sub>4</sub> (20)
Line Size — O.D. Liq. <sup>5</sup> — in. (mm)	<sup>1</sup> / <sub>4</sub> (16)	<sup>1</sup> / <sub>4</sub> (16)	<sup>5</sup> / <sub>16</sub> (8)
<b>Dimensions</b>	H x W x D	H x W x D	H x W x D
<b>Outdoor Unit</b>			
Crated — in. (mm)	24 <sup>3</sup> / <sub>4</sub> x 20 x 20 (629 x 508 x 508)	24 <sup>3</sup> / <sub>4</sub> x 20 x 20 (629 x 508 x 508)	24 <sup>3</sup> / <sub>4</sub> x 20 x 20 (629 x 508 x 508)
Uncrated	See Outline Dwg.	See Outline Dwg.	See Outline Dwg.
<b>Weight</b>			
Shipping — lbs. (kg)	118 (53.5)	118 (53.5)	130 (60.0)
Net — lbs. (kg)	112 (50.8)	112 (50.8)	125 (56.7)

Notes:

<sup>1</sup>Rated in accordance with A.R.I. Standard 210/240.

<sup>2</sup>Rated in accordance with A.R.I. Standard 270.

<sup>3</sup>At ARI conditions 80 degrees F (DB) 67 degrees F (WB) - 98 degrees F (DB).

<sup>4</sup>Rated for 25 feet (7.5 meters) of evacuated refrigerant piping.

<sup>5</sup>Max. linear length 80 ft; Max. lift — suction 60 ft; Max. length of precharged tubing 50 ft. For greater length refer to Refrigerant Piping Manual, Pub. No. 32-3009.





# Product Data

## Product Specifications<sup>1,2</sup>

Outdoor Units	TTB524CA00A	TTB530CA00A	TTB536CA00A
<b>Power Conns. — Volts/Ph/Hz</b>	220-230/1/50	220-230/1/50	200-230/1/50
<b>Fuse Size - max. amps</b>	Per Local Code	Per Local Code	Per Local Code
<b>Compressor</b>	Climatuff®	Climatuff®	Climatuff®
No. Used — No. Speeds	1 — 1	1 — 1	1 — 1
Volts/Ph/Hz	200-230/1/50	200-230/1/50	200-230/1/50
R.L. Amps <sup>3</sup>	13.9	13.9	17.6
L.R. Amps	60	79	95
<b>Outdoor Fan — Type</b>	Propeller	Propeller	Propeller
Dia. — in. (mm) — No. Used	18 (457) — 1	18 (457) — 1	18 (457) — 1
Type Drive — No. Speeds	Direct — 1	Direct — 1	Direct — 1
CFM @ 0.0 in. w.g.	1925	2225	2225
CMH @ 0.0 mm w.g.	3270	3779	3779
No. Motors	1	1	1
Motor HP (KW)	1/6 (.124)	1/6 (.124)	1/6 (.124)
Motor Speed (RPM)	1100	1100	1100
Volts/Ph/Hz	200-230/1/50	200-230/1/50	200-230/1/50
F.L. Amps	1.30	1.30	1.30
<b>Outdoor Fan — Type</b>	Spine Fin™	Spine Fin™	Spine Fin™
Rows — Fins/in. (Fins/mm)	1 — 24 (1)	1 — 24 (1)	1 — 24 (1)
Face Area — ft <sup>2</sup> (m <sup>2</sup> )	10.96 (1.02)	14.93 (1.39)	14.93 (1.39)
Tube Size — in. (mm)	3/8 (10)	3/8 (10)	3/8 (10)
<b>Refrigerant</b>			
Lbs. of R-22 <sup>4</sup>	4 lbs., 15 oz.	6 lbs., 11 oz.	6 lbs., 11 oz.
Kg. of R-22 <sup>4</sup>	2.24	3.03	3.03
Factory Supplied	Yes	Yes	Yes
Line Size — O.D. Gas <sup>5</sup> — in. (mm)	3/4 (20)	3/4 (20)	3/4 (20)
Line Size — O.D. Liq. <sup>5</sup> — in. (mm)	5/16 (8)	5/16 (8)	5/16 (8)
<b>Dimensions</b>	H x W x D	H x W x D	H x W x D
<b>Outdoor Unit</b>			
Crated — in. (mm)	26 3/8 x 26 7/8 x 26 7/8 (665 x 683 x 683)	33 3/8 x 26 7/8 x 26 7/8 (848 x 683 x 683)	33 3/8 x 26 7/8 x 26 7/8 (848 x 683 x 683)
Uncrated	See Outline Dwg.	See Outline Dwg.	See Outline Dwg.
<b>Weight</b>			
Shipping — lbs. (kg)	176 (79.8)	184 (83.5)	203 (92.1)
Net — lbs. (kg)	166 (75.3)	174 (78.9)	193 (87.5)

Notes:

<sup>1</sup>Rated in accordance with A.R.I. Standard 210/240.

<sup>2</sup>Rated in accordance with A.R.I. Standard 270.

<sup>3</sup>At ARI conditions 80 degrees F (DB) 67 degrees F (WB) - 98 degrees F (DB).

<sup>4</sup>Rated for 25 feet (7.5 meters) of evacuated refrigerant piping.

<sup>5</sup>Max. linear length 80 ft; Max. lift — suction 60 ft; Max. length of precharged tubing 50 ft. For greater length refer to Refrigerant Piping Manual, Pub. No. 32-3009.



# General Data

## Product Specifications<sup>1,2</sup>

Indoor Units	TTA030CD00A	TTA040CD00A	TTA050CD00A	TTA060CD00A
<b>Power Conn. - Volts/Ph/Hz</b>	380-415/3/50	380-415/3/50	380-415/3/50	380-415/3/50
<b>Fuse Size-max. amps</b>	Per Local Codes	Per Local Codes	Per Local Codes	Per Local Codes
<b>Compressor - Type</b>	Climatuff®	Climatuff®	Climatuff®	Climatuff®
<b>No. Used - No. Speeds</b>	1 - 1	1 - 1	1 - 1	1 - 1
<b>Volts/Ph/Hz</b>	380-415/3/50	380-415/3/50	380-415/3/50	380-415/3/50
<b>R.L. Amps<sup>3</sup></b>	5.0	7.0	9.0	10.6
<b>L.R. Amps</b>	51.0	51.0	71.0	64.0
<b>Outdoor Fan - Type</b>	Propeller	Propeller	Propeller	Propeller
<b>No. Used</b>	1	1	1	1
<b>Diameter (in) - (mm)</b>	18 - 457	16 - 457	22 - 569	26 - 660
<b>Type Drive-No Speeds</b>	Direct-1	Direct-1	Direct-1	Direct-1
<b>CFM @ 0.0 in. w.g.</b>	1815	1845	2225	4250
<b>CMH @ 0.0 mm. w.g.</b>	3083	3134	3780	7220
<b>No. Motors - HP (KW)</b>	1 - 1/4 (.186)	1 - 1/4 (.186)	1 - 1/3 (.246)	1 - 1/3 (.246)
<b>Motor Speed (RPM)</b>	1 - (900)	1 - (900)	1 - (690)	1 - (690)
<b>Volts/Ph/Hz</b>	400/1/50	400/1/50	400/1/50	400/1/50
<b>F.L. Amps</b>	0.80	0.80	1.00	1.70
<b>Outdoor Coil - Type</b>	Spine Fin™	Spine Fin™	Spine Fin™	Spine Fin™
<b>No. Rows</b>	1	1	1	1
<b>Fins per inch</b>	24	24	24	24
<b>Face Area (Sq. Ft.) - (Sq. M.)</b>	12.22 - 1.14	1684 - 1.57	25.50 - 2.37	35.39 - 3.29
<b>Tube Size - (in) (mm)</b>	3/8 - (10)	3/8 - (10)	3/8 - (10)	3/8 - (10)
<b>Refrigerant</b>				
<b>Lbs. of R-22<sup>4</sup></b>	5 lbs., 12 oz.	7 lbs., 2 oz.	3 lbs., 2 oz.	13 lbs., 0 oz.
<b>Kg. of R-22<sup>4</sup></b>	2.61	3.23	4.14	5.90
<b>Line Size-O.D.<sup>5</sup> Gas - (in) (mm)</b>	7/8 - 22.3	1 1/8 - 26.6	1 1/8 - 28.6	1 1/8 - 28.6
<b>Line Size-O.D.<sup>5</sup> Liq. - (in) (mm)</b>	3/8 - (10)	3/8 - (10)	3/8 - (10)	3/8 - (10)
<b>Dimensions (H x W x D)</b>				
<b>Crated (in)</b>	25.0 x 30.0 x 26.5	33.3 x 30.0 x 26.5	41.3 x 34.8 x 31.3	45.5 x 41.0 x 37.0
<b>(mm)</b>	635 x 762 x 673	846 x 762 x 673	1049 x 884 x 795	1156 x 1041 x 940
<b>Uncrated (in)</b>	24.3 x 26.3 x 24.6	32.8 x 28.3 x 24.6	40.6 x 32.9 x 28.8	44.8 x 36.9 x 34.8
<b>(mm)</b>	617 x 719 x 625	833 x 719 x 625	1031 x 836 x 732	1138 x 988 x 884
<b>Weight - lbs. (kg)</b>				
<b>Shipping</b>	190.0 (86.2)	211.0 (96.7)	254.0 (115.2)	333.0 (151.0)
<b>Net</b>	181.0 (82.1)	200.0 (90.7)	239.0 (108.4)	314.0 (142.0)

Notes:

<sup>1</sup>Rated in accordance with A.R.I. Standard 210/240.

<sup>2</sup>Rated in accordance with A.R.I. Standard 270.

<sup>3</sup>At ARI conditions 80 degrees F (DB) 67 degrees F (WB) - 98 degrees F (DB).

<sup>4</sup>Rated for 25 feet (7.5 meters) of evacuated refrigerant piping.

<sup>5</sup>Max. linear length 80 ft; Max. lift — suction 60 ft; Max. length of precharged tubing 50 ft. For greater length refer to Refrigerant Piping Manual, Pub. No. 32-3009.



# General Data

## Product Specifications<sup>1,2</sup>

Outdoor Units	TTK512LB00B	TTK518LB00B	TTK524LB00B
<b>Power Conn. - Volts/Ph/Hz</b>	220-240/1/50	220-240/1/50	220-240/1/50
Fuse Size - max (amps)	Per Local Code	Per Local Code	Per Local Code
<b>Compressor - Type</b>	Rotary	Rotary	Rotary
No. Used -No. Speeds	1 - 1	1 - 1	1 - 1
Volts/Ph/Hz	380-415/3/50	380-415/3/50	380/415/3/50
R.L. Amps <sup>3</sup>	6.0	8.0	11.3
L.R. Amps	33.0	43.0	55.0
<b>Outdoor Fan - Type</b>	Propeller	Propeller	Propeller
No. Used	1	1	1
Diameter (in) - (mm)	18 - (457)	18 - (457)	18 - (457)
Type Drive - No. speeds	Direct-1	Direct-1	Direct-1
CFM @ 0.0 in w.g.	1490	1360	1360
CMH @ 0.0 mm w.g.	2530	2310	2310
No. Motors - HP (KW)	1 - 1/15 (.52)	1 - 1/15 (.52)	1 - 1/15 (.52)
Motor Speed (RPM)	1 - (940)	1 - (910)	1 - (910)
Volts/Ph/Hz	400/1/50	400/1/50	400/1/50
L.R. Amps	0.98	0.98	0.98
<b>Outdoor Coil - Type</b>	Plate Fin	Plate Fin	Plate Fin
No. Rows	1	2	2
Fins per Inch	14	14	14
Face Area (Sq.Ft.) - (Sq.M.)	4.74 - 0.44	4.74 - 0.44	4.74 - 0.44
Tube Size (in) - (mm)	<sup>3</sup> / <sub>8</sub> - 9.52	<sup>3</sup> / <sub>8</sub> - 9.52	<sup>3</sup> / <sub>8</sub> - 9.52
<b>Refrigerant</b>			
Lbs. of R-22 <sup>4</sup>	2 lbs., 15 oz.	4 lbs., 7 oz.	5 lbs., 5 oz.
Kg. of R-22 <sup>4</sup>	1.36	2.01	2.40
Line Size - O.D. <sup>5</sup> Gas (in)-(mm)	<sup>1</sup> / <sub>2</sub> - 12.7	<sup>1</sup> / <sub>2</sub> - 12.7	<sup>5</sup> / <sub>8</sub> - 15.88
Line Size - O.D. <sup>5</sup> Liq. (in)-(mm)	<sup>1</sup> / <sub>4</sub> - 6.35	<sup>1</sup> / <sub>4</sub> - 6.35	<sup>3</sup> / <sub>8</sub> - 9.52
<b>Dimensions</b>	H x W x D	H x W x D	H x W x D
Crated (in)	25.5 x 37.7 x 16.0	25.5 x 37.7 x 16.0	25.5 x 37.7 x 16.0
(mm)	648 x 958 x 406	648 x 958 x 406	648 x 958 x 406
Uncrated (in)	23.2 x 32.7 x 15.0	23.2 x 32.7 x 15.0	23.2 x 32.7 x 15.0
(mm)	590 x 830 x 380	590 x 830 x 380	590 x 830 x 380
<b>Weight - lbs. (kg)</b>			
Shipping	93.5 (42.5)	121.2 (55.1)	133.1 (60.5)
Net	82.5 (37.5)	110.2 (50.1)	122.1 (55.5)

Notes:

<sup>1</sup>Rated in accordance with A.R.I. Standard 210/240.

<sup>2</sup>Rated in accordance with A.R.I. Standard 270.

<sup>3</sup>At ARI conditions 80 degrees F (DB) 67 degrees F (WB) - 98 degrees F (DB).

<sup>4</sup>Rated for 25 feet (7.5 meters) of evacuated refrigerant piping.

<sup>5</sup>Max. linear length 80 ft; Max. lift — suction 60 ft; Max. length of precharged tubing 50 ft. For greater length refer to Refrigerant Piping Manual, Pub. No. 32-3009.



# General Data

## Product Specifications<sup>1,2</sup>

Outdoor Units	TTK530KB00B	TTK536KB00B	TTK536KD00B
<b>Power Conn. - Volts/Ph/Hz</b>	220-240/1/50	220-240/1/50	380-415/3/50
<b>Fuse Size - max (amps)</b>	Local Code	Local Code	Local Code
<b>Compressor - Type</b>	Reciprocating	Reciprocating	Reciprocating
No. Used -No. Speeds	1 - 1	1 - 1	1 - 1
R.L. Amps <sup>3</sup>	19.1	21.9	8.2
L.R. Amps	87.0	95.6	42.0
<b>Outdoor Fan - Type</b>	Propeller	Propeller	Propeller
No. Used	1	1	1
Diameter (in) - (mm)	20 - (508)	20 - (508)	20 - (508)
Pitch Angle (Degree)	30	30	30
Type Drive - No. speeds	Direct-1	Direct-1	Direct-1
CFM @ 0.0 in w.g.	2130	2130	2130
CMH @ 0.0 in w.g.	3619	3619	3619
No. Motors - HP	1 - 1/6	1 - 1/6	1 - 1/6
Motor Speed (RPM)	1 - (860)	1 - (860)	1 - (860)
Volts/Ph/Hz	400/1/50	400/1/50	400/1/50
L.R. Amps	2.04	2.04	2.04
<b>Outdoor Coil - Type</b>	Plate Fin	Plate Fin	Plate Fin
No. Rows	2	2	2
Fins per Inch	16	16	16
Face Area (Sq.Ft.) - (Sq.M.)	7.29 - 0.68	7.29 - 0.68	7.29 - 0.68
Tube Size (in) - (mm)	<sup>3</sup> / <sub>8</sub> - (10)	<sup>3</sup> / <sub>8</sub> - (10)	<sup>3</sup> / <sub>8</sub> - (10)
Tube Type	Smooth	Smooth	Inn. Grv.
<b>Refrigerant</b>			
Lbs. of R-22 <sup>4</sup>	6 lbs., 12 oz.	7 lbs., 11 oz.	7 lbs., 11 oz.
Kg. of R-22 <sup>4</sup>	3.07	3.50	3.50
Factory Supplied	Yes	Yes	Yes
Line Size - O.D. <sup>5</sup> Gas (in)-(mm)	<sup>5</sup> / <sub>8</sub> - (16)	<sup>3</sup> / <sub>4</sub> - (19)	<sup>3</sup> / <sub>4</sub> - (19)
Line Size - O.D. <sup>5</sup> Liq. (in)-(mm)	<sup>3</sup> / <sub>8</sub> - (10)	<sup>3</sup> / <sub>8</sub> - (10)	<sup>3</sup> / <sub>8</sub> - (10)
<b>Dimensions</b>	H x W x D	H x W x D	H x W x D
Crated(in)	34.5 x 45.1 x 17.2	34.5 x 45.1 x 17.2	34.5 x 45.1 x 17.2
(mm)	876 x 1146 x 437	876 x 1146 x 437	876 x 1146 x 437
Uncrated (in)	31.3 x 42.4 x 14.2	31.3 x 42.4 x 14.2	31.3 x 42.4 x 14.2
(mm)	795 x 1078 x 380	795 x 1078 x 380	795 x 1078 x 380
<b>Weight - lbs. (kg)</b>			
Shipping	181.1 (82.3)	189.2 (86.0)	189.2 (86.0)
Net	165.7 (75.3)	173.8 (79.0)	173.8 (79.0)

Notes:

<sup>1</sup>Rated in accordance with A.R.I. Standard 210/240.

<sup>2</sup>Rated in accordance with A.R.I. Standard 270.

<sup>3</sup>At ARI conditions 80 degrees F (DB) 67 degrees F (WB) - 98 degrees F (DB).

<sup>4</sup>Rated for 25 feet (7.5 meters) of evacuated refrigerant piping.

<sup>5</sup>Max. linear length 80 ft; Max. lift — suction 60 ft; Max. length of precharged tubing 50 ft. For greater length refer to Refrigerant Piping Manual, Pub. No. 32-3009.



# General Data

## Product Specifications<sup>1,2</sup>

Outdoor Units	TTK042KD00A	TTK048KD00C	TTK060KD00C
<b>Power Conn. - Volts/Ph/Hz</b>	380-415/3/50	380-415/3/50	380-415/3/50
<b>Fuse Size - max (amps)</b>	Local Code	Local Code	Local Code
<b>Compressor - Type</b>	Reciprocating	Reciprocating	Reciprocating
No. Used -No. Speeds	1-1	1-1	1-1
R.L. Amps <sup>3</sup>	8.6	9.6	9.95
L.R. Amps	45.0	65.0	61.8
<b>Outdoor Fan - Type</b>	Propeller	Propeller	Propeller
No. Used	1	2	2
Diameter (in) - (mm)	20 - (508)	18 - (457)	18 - (457)
Drive Type - No. speeds	Direct-1	Direct - 1	Direct - 1
CFM @ 0.0 in w.g.	2130	2690	2690
CMH @ 0.0 in w.g.	3619	4570	4570
No. Motors - (HP) (KW)	1 - 1/6 (.130)	2 - 1/15 (.149)	2 - 1/15 (.149)
Motor Speed (RPM)	900	900	900
Volts/Ph/Hz	400/1/50	400/1/50	400/1/50
L.R. Amps	1.88	2 - .98	2 - .98
<b>Outdoor Coil - Type</b>	Louver Fin	Louver Fin	Louver Fin
No. Rows	2	2	2
Fins per Inch	20	17	21
Face Area (Sq.Ft.) - (Sq.M.)	(7.29) - (0.68)	11.67 - 1.08	11.67 - 1.08
Tube Size (in) - (mm)	<sup>3</sup> / <sub>8</sub> - (10)	<sup>3</sup> / <sub>8</sub> - (10)	<sup>3</sup> / <sub>8</sub> - (10)
Tube Type	Inn. Grv.	Smooth	Inn. Grv.
<b>Refrigerant</b>			
Lbs. of R-22 <sup>4</sup>	8 lbs., 8.4 oz.	7 lbs., 12 oz.	8 lbs., 12 oz.
Kg. of R-22 <sup>4</sup>	4.0	3.53	4.1
Factory Supplied	Yes	Yes	Yes
Line Size - O.D. <sup>5</sup> Gas (in)-(mm)	<sup>7</sup> / <sub>8</sub> - (22.2)	1 <sup>1</sup> / <sub>8</sub> - (28.6)	1 <sup>1</sup> / <sub>8</sub> - (28.6)
Line Size - O.D. <sup>5</sup> Liq. (in)-(mm)	<sup>3</sup> / <sub>8</sub> - (10)	<sup>3</sup> / <sub>8</sub> - (10)	<sup>3</sup> / <sub>8</sub> - (10)
<b>Dimensions</b>	H x W x D	H x W x D	H x W x D
Crated (Shipping) (in)	34.5 x 45.1 x 17.2	54 x 43 x 17.7	54 x 43 x 17.7
(mm)	876 x 1146 x 437	1380 x 1090 x 450	1380 x 1090 x 450
Uncrated (in)	31.3 x 40.0 x 14.2	49.37 x 38.88 x 13.75	49.37 x 38.88 x 13.75
(mm)	795 x 1018 x 380	1256 x 988 x 350	1256 x 988 x 350
<b>Weight - lbs. (kg)</b>			
Shipping	191.9 (87.2)	264.4 (120)	284.2 (129)
Net (uncrated)	176.5 (80.2)	224.8 (102)	244.6 (111)

Notes:

<sup>1</sup>Rated in accordance with A.R.I. Standard 210/240.

<sup>2</sup>Rated in accordance with A.R.I. Standard 270.

<sup>3</sup>At ARI conditions 80 degrees F (DB) 67 degrees F (WB) - 98 degrees F (DB).

<sup>4</sup>Rated for 25 feet (7.5 meters) of evacuated refrigerant piping.

<sup>5</sup>Max. linear length 80 ft; Max. lift — suction 60 ft; Max. length of precharged tubing 50 ft. For greater length refer to Refrigerant Piping Manual, Pub. No. 32-3009.



# Performance Data Cooling

English Units

## TTB510CA WITH MCX512EB AT 400 CFM GROSS CAPACITY IN BTU/H x 1000

O.D. D.B.	I.D. W.B.	TOTAL CAP.	SENS. CAP. AT ENTERING D.B. TEMP.				COMPR. KW	DEW DEW PT.	
			72	74	76	78	80		
85	59	11.6	9.5	10.2	10.9	11.6*	11.9*	0.92	46.4
	63	12.5	8.2	8.9	9.6	10.3	11.0	0.94	50.4
	67	13.5	6.7	7.4	8.1	8.8	9.5	0.97	54.3
	71	14.6	5.2	5.9	6.6	7.3	8.0	1.00	58.3
90	59	11.6	9.5	10.2	10.9	11.6*	11.9*	0.97	46.3
	63	12.6	8.2	8.9	9.6	10.3	11.0	0.99	50.4
	67	13.6	6.7	7.4	8.1	8.8	9.5	1.02	54.3
	71	14.6	5.2	5.9	6.6	7.3	8.0	1.05	58.3
95	59	11.6	9.5	10.2	10.9	11.6*	11.9*	10.02	46.3
	63	12.6	8.2	8.9	9.6	10.3	11.0	1.04	50.3
	67	13.6	6.7	7.4	8.1	8.8	9.5	1.07	54.2
	71	14.7	5.2	5.9	6.6	7.3	8.0	1.10	58.2
100	59	11.3	9.4	10.1	10.8	11.4*	11.7*	1.05	47.2
	63	12.3	8.1	8.8	9.5	10.2	10.9	1.08	50.8
	67	13.3	6.6	7.3	8.0	8.7	9.4	1.10	54.7
	71	14.3	5.1	5.8	6.5	7.2	7.9	1.13	58.8
105	59	11.0	9.3	10.0	10.7	11.2*	11.5*	1.09	47.6
	63	11.9	7.9	8.6	9.3	10.0	10.7	1.11	51.3
	67	12.9	6.5	7.2	7.9	8.6	9.3	1.14	55.3
	71	13.9	4.9	5.6	6.3	7.0	7.7	1.16	59.3
115	59	10.4	9.0	9.7	10.4	10.7*	11.0*	1.16	48.6
	63	11.3	7.7	8.4	9.1	9.8	10.5	1.18	52.3
	67	12.2	6.2	6.9	7.6	8.3	9.0	1.20	56.2
	71	13.2	4.7	5.4	6.1	6.8	7.5	1.22	60.3
120	59	10.1	8.8	9.5	10.2*	10.5*	10.7*	1.19	49.0
	63	11.0	7.5	8.2	8.9	9.6	10.3	1.21	52.7
	67	11.9	6.0	6.7	7.4	8.1	8.8	1.23	56.7
	71	12.8	4.5	5.2	5.9	6.6	7.3	1.25	60.8

VALUES AT 95/80/67 RATING CONDITIONS  
GROSS CAPACITY = 13600 BTUH  
AIRFLOW = 400 CFM  
APP. DEW PT. = 54.2 DEG.F  
COMPRESSOR POWER = 1072 WATTS  
I.D. FAN POWER = 75 WATTS  
O.D. FAN POWER = 130 WATTS  
S.E.E.R. = 9.96 BTUH/WATT  
E.E.R. = 10.65 BTUH/WATT

NOTE: RATED WITH 25 FEET OF 5/8 IN. SUCTION AND 1/4 IN. LIQUID LINES

## TTB515CA WITH MCX518EB AT 475 CFM GROSS CAPACITY IN BTU/H x 1000

O.D. D.B.	I.D. W.B.	TOTAL CAP.	SENS. CAP. AT ENTERING D.B. TEMP.				COMPR. KW	DEW DEW PT.	
			72	74	76	78	80		
85	59	13.4	12.0	12.9	13.6*	14.0*	14.3*	1.01	48.6
	63	14.6	10.2	11.1	12.1	13.0	14.0	1.05	52.3
	67	15.8	8.2	9.2	10.1	11.0	12.0	1.09	56.4
	71	17.0	6.2	7.1	8.1	9.0	10.0	1.13	60.5
90	59	13.4	11.9	12.9	13.5*	13.9*	14.3*	1.06	48.6
	63	14.5	10.2	11.1	12.0	13.0	13.9	1.10	52.4
	67	15.7	8.2	9.1	10.1	11.0	11.9	1.14	56.4
	71	16.9	6.2	7.1	8.0	9.0	9.9	1.19	60.6
95	59	13.3	11.9	12.9	13.5*	13.9*	14.2*	1.11	48.7
	63	14.4	10.1	11.1	12.0	13.0	13.9	1.15	52.5
	67	15.6	8.2	9.1	10.0	11.0	11.9	1.20	56.5
	71	16.8	6.1	7.1	8.0	8.9	9.9	1.24	60.7
100	59	12.9	11.7	12.7	13.1*	13.5*	13.9*	1.16	49.2
	63	14.0	9.9	10.9	11.8	12.7	13.7	1.20	53.0
	67	15.1	7.9	8.9	9.8	10.8	11.7	1.24	57.0
	71	16.3	5.9	6.9	7.8	8.7	9.7	1.29	61.2
105	59	12.5	11.5	12.5	12.8*	13.2*	13.5*	1.20	49*7
	63	13.5	9.7	10.7	11.6	12.5	13.5	1.24	53.4
	67	14.6	7.7	8.7	9.6	10.6	11.5	1.28	57.5
	71	15.7	5.7	6.7	7.6	8.5	9.5	1.33	61.7
115	59	11.6	11.1	11.8*	12.1*	12.4*	12.7*	1.29	50.6
	63	12.6	9.3	10.3	11.2	12.1	12.7*	1.33	54.4
	67	13.6	7.3	8.3	9.2	10.1	11.1	1.37	58.5
	71	14.6	5.3	6.2	7.2	8.1	9.1	1.41	62.7
120	59	11.2	10.9	11.4*	11.7*	12.1*	12.4*	1.34	51.0
	63	12.1	9.1	10.1	11.0	11.9	12.4*	1.38	54.8
	67	13.1	7.1	8.1	9.0	9.9	10.9	1.41	59.0
	71	14.1	5.1	6.0	7.0	7.9	8.8	1.45	63.2

VALUES AT 95/80/67 RATING CONDITIONS  
GROSS CAPACITY = 15600 BTUH  
AIRFLOW = 475 CFM  
APP. DEW PT. = 56.5 DEG.F  
COMPRESSOR POWER = 1198 WATTS  
I.D. FAN POWER = 90 WATTS  
O.D. FAN POWER = 130 WATTS  
S.E.E.R. = 10.36 BTUH/WATT  
E.E.R. = 11.00 BTUH/WATT

NOTE: RATED WITH 25 FEET OF 5/8 IN. SUCTION AND 1/4 IN. LIQUID LINES



# Performance Data Cooling

Metric Units

## TTB510CA WITH MCX512EB AT 0.19 CMS (400 CFM) GROSS CAPACITY IN KILOWATTS

Return Air DB/WB C	Outdoor Temperatures C					
	25	29	32	35	40	45
21.0/14.5 Capacity kW	3.3	3.4	3.4	3.4	3.2	3.1
Sensible kW	2.6	2.7	2.7	2.7	2.6	2.5
SHR (%)	80	79	79	79	80	82
Compressor kW	0.8	0.9	1.0	1.0	1.1	1.1
24.0/17.0 Capacity kW	3.6	3.6	3.6	3.7	3.5	3.3
Sensible kW	2.7	2.8	2.8	2.8	2.7	2.6
SHR (%)	77	76	76	76	77	79
Compressor kW	0.9	0.9	1.0	1.0	1.1	1.2
29.0/21.0 Capacity kW	3.8	3.9	3.9	3.9	3.7	3.6
Sensible kW	2.8	2.8	2.8	2.8	2.7	2.7
SHR (%)	72	72	72	72	73	75
Compressor kW	0.9	1.0	1.0	1.1	1.1	1.2

VALUES AT ARI RATING CONDITIONS  
GROSS CAPACITY = 3.98 KW  
AIRFLOW = 0.19 CMS  
AIRFLOW = 400 CFM  
APP. DEW PT. = 12.4 DEG. C  
COMPRESSOR POWER = 1072 WATTS  
I.D. FAN POWER = 75 WATTS  
O.D. FAN POWER = 130 WATTS  
COP = 3.12  
EER = 10.65 BTU/WATT

NOTE: RATED WITH 7.62 METERS OF 7/8 IN. SUCTION AND 3/8 IN. LIQUID LINES

## TTB515CA WITH MCX518EB AT 0.22 CMS (475 CFM) GROSS CAPACITY IN KILOWATTS

Return Air DB/WB C	Outdoor Temperatures C					
	25	29	32	35	40	45
21.0/14.5 Capacity kW	3.9	3.9	3.9	3.9	3.7	3.4
Sensible kW	3.3	3.4	3.3	3.3	3.2	3.1
SHR (%)	85	85	85	86	88	91
Compressor kW	0.9	1.0	1.1	1.1	1.2	1.3
24.0/17.0 Capacity kW	4.2	4.2	4.2	4.2	3.9	3.7
Sensible kW	3.5	3.5	3.5	3.5	3.3	3.2
SHR (%)	82	82	82	83	85	88
Compressor kW	1.0	1.0	1.1	1.2	1.2	1.3
29.0/21.0 Capacity kW	4.5	4.5	4.5	4.5	4.2	4.0
Sensible kW	3.5	3.5	3.5	3.5	3.4	3.3
SHR (%)	78	78	78	78	81	84
Compressor kW	1.0	1.1	1.1	1.2	1.3	1.3

VALUES AT ARI RATING CONDITIONS  
GROSS CAPACITY = 4.56 KW  
AIRFLOW = 0.22 CMS  
AIRFLOW = 475 CFM  
APP. DEW PT. = 13.6 DEG. C  
COMPRESSOR POWER = 1198 WATTS  
I.D. FAN POWER = 90 WATTS  
O.D. FAN POWER = 130 WATTS  
COP = 3.22  
EER = 10.00 BTU/WATT

NOTE: RATED WITH 7.62 METERS OF 5/8 IN. SUCTION AND 1/4 IN. LIQUID LINES



# Performance Data Cooling

English Units

## TTB520CA WITH MCX518EB AT 475 CFM

### GROSS CAPACITY IN BTU/H x 1000

O.D. D.B.	I.D. W.B.	TOTAL CAP.	SENS. 72	CAP. AT 74	ENTERING 76	D.B. TEMP. 78	80	COMPR. KW	DEW DEW PT.
85	59	15.7	13.0	14.0	14.9	15.8*	16.2*	1.36	46.4
	63	17.1	11.3	12.2	13.1	14.1	15.0	1.41	50.6
	67	18.5	9.3	10.3	11.2	12.1	13.1	1.46	54.5
	71	19.9	7.3	8.2	9.2	10.1	11.1	1.51	58.6
90	59	15.7	13.0	13.9	14.9	15.8*	16.2*	1.42	46.5
	63	17.0	11.3	12.2	13.1	14.1	15.0	1.47	50.6
	67	18.4	9.3	10.2	11.2	12.1	13.0	1.52	54.6
	71	19.9	7.3	8.2	9.2	10.1	11.0	1.58	58.6
95	59	15.7	13.0	13.9	14.9	15.7*	16.1*	1.49	46.5
	63	17.0	11.3	12.2	13.1	14.1	15.0	1.54	50.6
	67	18.4	9.3	10.2	11.2	12.1	13.0	1.59	54.6
	71	19.8	7.3	8.2	9.2	10.1	11.0	1.65	58.7
100	59	15.2	12.8	13.7	14.6	15.4*	15.8*	1.54	47.2
	63	16.5	11.0	12.0	12.9	13.8	14.8	1.59	51.2
	67	17.9	9.1	10.0	10.9	11.9	12.8	1.64	55.2
	71	19.2	7.1	8.0	8.9	9.9	10.8	1.69	59.3
105	59	14.8	12.6	13.5	14.4	15.0*	15.4*	1.58	48.0
	63	16.0	10.8	11.7	12.7	13.6	14.5	1.63	51.7
	67	17.3	8.8	9.8	10.7	11.6	12.6	1.68	55.8
	71	18.7	6.8	7.8	8.7	9.6	10.6	1.73	59.9
115	59	13.9	12.1	13.0	13.9*	14.3*	14.7*	1.68	49.1
	63	15.0	10.3	11.3	12.2	13.2	14.1	1.73	52.8
	67	16.3	8.4	9.3	10.3	11.2	12.1	1.77	56.9
	71	17.5	6.4	7.3	8.2	9.2	10.1	1.82	61.0
120	59	13.4	11.9	12.8	13.5*	13.9*	14.3*	1.73	49.6
	63	14.5	10.1	11.1	12.0	12.9	13.9	1.77	53.4
	67	15.7	8.2	9.1	10.0	11.0	11.9	1.82	57.4
	71	16.9	6.1	7.1	8.0	8.9	9.9	1.86	61.6

VALUES AT 95/80/67 RATING CONDITIONS  
GROSS CAPACITY = 18400 BTUH  
AIRFLOW = 475 CFM  
APP. DEW PT. = 54.6 DEG.F  
COMPRESSOR POWER = 1592 WATTS  
I.D. FAN POWER = 90 WATTS  
O.D. FAN POWER = 130 WATTS  
S.E.E.R. = 9.63 BTUH/WATT  
E.E.R. = 10.15 BTUH/WATT

NOTE : RATED WITH 25 FEET OF 3/4 IN. SUCTION AND 5/16 IN. LIQUID LINES

## TTB520CA WITH MCX524EB AT 675 CFM

### GROSS CAPACITY IN BTU/H x 1000

O.D. D.B.	I.D. W.B.	TOTAL CAP.	SENS. 72	CAP. AT 74	ENTERING 76	D.B. TEMP. 78	80	COMPR. KW	DEW DEW PT.
85	59	17.8	16.1	17.4	18.1*	18.6*	19.0*	1.40	48.7
	63	19.2	13.6	14.9	16.2	17.5	18.8	1.45	52.6
	67	20.6	10.8	12.1	13.4	14.7	16.0	1.51	56.7
	71	22.1	7.9	9.2	10.5	11.8	13.1	1.56	60.9
90	59	17.6	16.0	17.3	18.0*	18.4*	18.9*	1.47	48.9
	63	19.0	13.5	14.8	16.1	17.4	18.7	1.53	52.7
	67	20.4	10.7	12.0	13.3	14.6	15.9	1.58	56.9
	71	21.9	7.8	9.1	10.4	11.7	13.0	1.64	61.1
95	59	17.4	15.9	17.2	17.8*	18.3*	18.7*	1.54	49.0
	63	18.8	13.4	14.7	16.0	17.3	18.6	1.60	52.9
	67	20.2	10.6	11.9	13.2	14.5	15.8	1.65	57.0
	71	21.7	7.7	9.0	10.3	11.7	13.0	1.71	61.2
100	59	16.8	15.6	16.9*	17.3*	17.8*	18.2*	1.60	49.5
	63	18.1	13.1	14.4	15.7	17.0	18.2*	1.65	53.3
	67	19.5	10.3	11.6	12.9	14.2	15.5	1.70	57.5
	71	20.9	7.4	8.8	10.1	11.4	12.7	1.76	61.7
105	59	16.2	15.4	16.3*	16.8*1	17.2*	17.6*	1.65	49.9
	63	17.4	12.8	14.1	15.4	16.7	17.6*	1.70	53.8
	67	18.8	10.0	11.3	12.6	13.9	15.2	1.76	58.0
	71	20.1	7.2	8.5	9.8	11.1	12.4	1.81	62.2
115	59	15.0	14.8	15.3*	15.7*	16.1*	16.5*	1.76	50.9
	63	16.1	12.2	13.6	14.9	16.1*	16.5*	1.81	54.8
	67	17.3	9.4	10.7	12.0	13.4	14.7	1.87	59.0
	71	18.6	6.6	7.9	9.2	10.5	11.8	1.92	63.2
120	59	14.3	14.4*	14.8*	15.2*	15.6*	16.0*	1.82	51.3
	63	15.4	12.0	13.3	14.6	15.6*	16.0*	1.87	55.2
	67	16.6	9.2	10.5	11.8	13.1	14.4	1.92	59.4
	71	17.8	6.3	7.6	8.9	10.2	11.5	1.97	63.7

VALUES AT 95/80/67 RATING CONDITIONS  
GROSS CAPACITY = 20200 BTUH  
AIRFLOW = 675 CFM  
APP. DEW PT. = 57.0 DEG.F  
COMPRESSOR POWER = 1651 WATTS  
I.D. FAN POWER = 125 WATTS  
O.D. FAN POWER = 130 WATTS  
S.E.E.R. = 10.19 BTUH/WATT  
E.E.R. = 10.60 BTUH/WATT

NOTE: RATED WITH 25 FEET OF 3/4 IN. SUCTION AND 5/16 IN. LIQUID LINES





# Performance Data Cooling

Metric Units

## TTB520CA WITH MCX518EB AT 0.22 CMS (475 CFM) GROSS CAPACITY IN KILOWATTS

Return Air DB/WB C	Outdoor Temperatures C						
	25	29	32	35	40	45	
21.0/14.5	Capacity kW	4.6	4.6	4.6	4.6	4.4	4.1
	Sensible kW	3.6	3.7	3.7	3.7	3.5	3.4
	SHR (%)	80	80	80	80	81	83
	Compressor kW	1.3	1.3	1.4	1.5	1.6	1.7
24.0/17.0	Capacity kW	4.9	5.0	5.0	4.9	4.7	4.4
	Sensible kW	3.8	3.8	3.8	3.8	3.7	3.5
	SHR (%)	77	76	76	77	78	80
	Compressor kW	1.3	1.4	1.5	1.5	1.6	1.7
29.0/21.0	Capacity kW	5.3	5.3	5.3	5.3	5.0	4.7
	Sensible kW	3.8	3.8	3.8	3.8	3.7	3.6
	SHR (%)	72	72	72	72	74	76
	Compressor kW	1.3	1.4	1.5	1.6	1.7	1.7

VALUES AT ARI RATING CONDITIONS  
GROSS CAPACITY = 5.39 KW  
AIRFLOW = 0.22 CMS  
AIRFLOW = 475 CFM  
APP. DEW PT. = 12.5 DEG. C  
COMPRESSOR POWER = 1592 WATTS  
I.D. FAN POWER = 90 WATTS  
O.D. FAN POWER = 130 WATTS  
COP = 2.97  
EER = 10.15 BTU/WATT

NOTE: RATED WITH 7.62 METERS OF 3/4 IN. SUCTION AND 5/16 IN. LIQUID LINES

## TTB520CA WITH MCX524EB AT 0.32 CMS (675 CFM) GROSS CAPACITY IN KILOWATTS

Return Air DB/WB C	Outdoor Temperatures C						
	25	29	32	35	40	45	
21.0/14.5	Capacity kW	5.2	5.2	5.1	5.1	4.8	4.4
	Sensible kW	4.5	4.5	4.5	4.4	4.3	4.1
	SHR (%)	86	86	87	87	90	93
	Compressor kW	1.3	1.4	1.5	1.5	1.6	1.7
24.0/17.0	Capacity kW	5.6	5.6	5.5	5.4	5.1	4.8
	Sensible kW	4.7	4.6	4.6	4.6	4.4	4.3
	SHR (%)	83	84	84	84	87	90
	Compressor kW	1.3	1.4	1.5	1.6	1.7	1.8
29.0/21.0	Capacity kW	6.0	6.0	5.9	5.8	5.4	5.1
	Sensible kW	4.7	4.7	4.7	4.7	4.6	4.4
	SHR (%)	80	80	80	81	84	87
	Compressor kW	1.4	1.5	1.6	1.6	1.7	1.8

VALUES AT ARI RATING CONDITIONS  
GROSS CAPACITY = 5.90 KW  
AIRFLOW = 0.32 CMS  
AIRFLOW = 675 CFM  
APP. DEW PT. = 13.9 DEG. C  
COMPRESSOR POWER = 1651 WATTS  
I.D. FAN POWER = 125 WATTS  
O.D. FAN POWER = 130 WATTS  
COP = 3.11  
EER = 10.60 BTU/WATT

NOTE: RATED WITH 7.62 METERS OF 3/4 IN. SUCTION AND 5/16 IN. LIQUID LINES



# Performance Data Cooling

English Units

**TTB524CA WITH MCX524EB  
AT 675 CFM  
GROSS CAPACITY IN BTU/H x 1000**

O.D. D.B.	I.D. W.B.	TOTAL CAP.	SENS. 72	CAP. AT 74	ENTERING 76	D.B. TEMP. 78	80	COMPR. KW	DEW DEW PT.
85	59	21.6	17.7	19.0	20.3	21.6	22.2*	1.90	46.1
	63	23.4	15.3	16.6	17.9	19.2	20.5	1.97	50.2
	67	25.2	12.6	13.8	15.1	16.4	17.7	2.04	54.2
	71	27.1	9.7	11.0	12.3	13.6	14.9	2.11	58.3
90	59	21.5	17.7	19.0	20.2	21.5*	22.0*	2.00	46.3
	63	23.2	15.2	16.5	17.8	19.1	20.4	2.07	50.3
	67	25.0	12.5	13.8	15.0	16.3	17.6	2.14	54.4
	71	26.9	9.7	10.9	12.2	13.5	14.8	2.21	58.5
95	59	21.3	17.6	18.9	20.2	21.4*	21.9*	2.11	46.7
	63	23.0	15.1	16.4	17.7	19.0	20.3	2.17	50.5
	67	24.8	12.4	13.7	15.0	16.2	17.5	2.24	54.5
	71	26.6	9.6	10.9	12.1	13.4	14.7	2.31	58.7
100	59	20.6	17.3	18.5	19.8	20.8*	21.4*	2.19	47.3
	63	22.3	14.8	16.1	17.4	18.7	20.0	2.25	51.1
	67	24.0	12.0	13.3	14.6	15.9	17.2	2.32	55.1
	71	25.8	9.2	10.5	11.8	13.1	14.4	2.39	59.3
105	59	19.9	16.9	18.2	19.5	20.3*	20.8*	2.28	47.9
	63	21.5	14.5	15.7	17.0	18.3	19.6	2.34	51.7
	67	23.2	11.7	13.0	14.3	15.6	16.9	2.40	55.8
	71	24.9	8.9	10.2	11.5	12.8	14.0	2.46	59.9
115	59	18.6	16.3	17.6	18.7*	19.2*	19.7*	2.45	49.0
	63	20.0	13.8	15.1	16.4	17.7	19.0	2.50	52.8
	67	21.6	11.0	12.3	13.6	14.9	16.2	2.56	56.9
	71	23.1	8.2	9.5	10.8	12.1	13.4	2.61	61.2
120	59	17.9	16.0	17.3	18.1*	18.6*	19.1*	2.54	49.5
	63	19.3	13.5	14.8	16.1	17.4	18.6	2.59	53.4
	67	20.8	10.7	12.0	13.3	14.6	15.9	2.64	57.5
	71	22.3	7.9	9.2	10.5	11.8	13.1	2.69	61.7

VALUES AT 95/80/67 RATING CONDITIONS  
GROSS CAPACITY = 24800 BTUH  
AIRFLOW = 675 CFM  
APP. DEW PT. = 54.5 DEG.F  
COMPRESSOR POWER = 2241 WATTS  
I.D. FAN POWER = 125 WATTS  
O.D. FAN POWER = 165 WATTS  
S.E.E.R. = 9.51 BTUH/WATT  
E.E.R. = 9.80 BTUH/WATT

NOTE: RATED WITH 25 FEET OF 3/4 IN. SUCTION AND 5/16 IN. LIQUID LINES

**TTB530CA WITH MCX536EB  
AT 915 CFM  
GROSS CAPACITY IN BTU/H x 1000**

O.D. D.B.	I.D. W.B.	TOTAL CAP.	SENS. 72	CAP. AT 74	ENTERING 76	D.B. TEMP. 78	80	COMPR. KW	DEW DEW PT.
85	59	28.1	24.5	26.4	28.2*	28.9*	29.6*	2.10	48.0
	63	30.2	20.8	22.7	24.6	26.5	28.4	2.17	51.9
	67	32.3	16.7	18.6	20.5	22.4	24.3	2.25	56.1
	71	34.6	12.5	14.4	16.3	18.2	20.1	2.33	60.4
90	59	27.9	24.4	26.3	28.0*	28.7*	29.4*	2.21	48.1
	63	29.9	20.7	22.6	24.5	26.4	28.3	2.28	52.0
	67	32.1	16.6	18.5	20.4	22.3	24.2	2.36	56.2
	71	34.3	12.4	14.3	16.2	18.1	20.0	2.45	60.5
95	59	27.6	24.3	26.2	27.8*	28.5*	29.2*	2.31	48.2
	63	29.7	20.6	22.5	24.4	26.3	28.2	2.39	52.1
	67	31.8	16.5	18.4	20.3	22.2	24.1	2.47	56.3
	71	34.0	12.3	14.2	16.1	18.0	19.9	2.56	60.7
100	59	26.7	23.9	25.8	27.1*	27.8*	28.4*	2.40	48.7
	63	28.7	20.1	22.1	24.0	25.9	27.8	2.48	52.6
	67	30.8	16.0	17.9	19.8	21.8	23.7	2.56	56.8
	71	32.9	11.8	13.8	15.7	17.6	19.5	2.64	61.1
105	59	25.9	23.5	25.4	26.3*	27.0*	27.6*	2.49	49.1
	63	27.8	19.7	21.6	23.5	25.4	27.3	2.56	53.1
	67	29.7	15.6	17.5	19.4	21.3	23.2	2.64	57.3
	71	31.8	11.4	13.3	15.2	17.1	19.0	2.73	61.6
115	59	24.1	22.6	24.2*	24.9*	25.5*	26.1*	2.67	50.0
	63	25.8	18.9	20.8	22.7	24.6	26.1*	2.74	54.0
	67	27.7	14.8	16.7	18.6	20.5	22.4	2.82	58.2
	71	29.6	10.6	12.5	14.4	16.3	18.2	2.89	62.6
120	59	23.2	22.2	23.5*	24.1*	24.7*	25.3*	2.76	50.5
	63	24.9	18.5	20.4	22.3	24.2	25.3*	2.83	54.4
	67	26.7	14.4	16.3	18.2	20.1	22.0	2.90	58.7
	71	28.5	10.2	12.1	14.0	15.9	17.8	2.98	63.0

VALUES AT 95/80/67 RATING CONDITIONS  
GROSS CAPACITY = 31800 BTUH  
AIRFLOW = 915 CFM  
APP. DEW PT. = 56.3 DEG.F  
COMPRESSOR POWER = 2474 WATTS  
I.D. FAN POWER = 170 WATTS  
O.D. FAN POWER = 170 WATTS  
S.E.E.R. = 10.84 BTUH/WATT  
E.E.R. = 11.30 BTUH/WATT

NOTE: RATED WITH 25 FEET OF 3/4 IN. SUCTION AND 5/16 IN. LIQUID LINES



# Performance Data Cooling

Metric Units

## TTB524CA WITH MCX524EB AT 0.32 CMS (675 CFM) GROSS CAPACITY IN KILOWATTS

Return Air DB/WB C	Outdoor Temperatures C						
	25	29	32	35	40	45	
21.0/14.5	Capacity kW	6.4	6.3	6.3	6.2	5.9	5.5
	Sensible kW	5.0	5.0	5.0	4.9	4.8	4.6
	SHR (%)	79	79	79	79	81	83
	Compressor kW	1.7	1.9	2.0	2.1	2.3	2.4
24.0/17.0	Capacity kW	6.8	6.8	6.8	6.7	6.3	5.9
	Sensible kW	5.2	5.2	5.1	5.1	4.9	4.8
	SHR (%)	76	76	76	76	78	81
	Compressor kW	1.8	1.9	2.1	2.2	2.3	2.5
29.0/21.0	Capacity kW	7.3	7.3	7.2	7.2	6.7	6.3
	Sensible kW	5.2	5.2	5.2	5.2	5.0	4.8
	SHR (%)	72	72	72	72	74	77
	Compressor kW	1.9	2.0	2.1	2.2	2.4	2.5

VALUES AT ARI RATING CONDITIONS  
GROSS CAPACITY = 7.27 KW  
AIRFLOW = 0.32 CMS  
AIRFLOW = 675 CFM  
APP. DEW PT. = 12.5 DEG. C  
COMPRESSOR POWER = 2241 WATTS  
I.D. FAN POWER = 125 WATTS  
O.D. FAN POWER = 165 WATTS  
COP = 2.87  
EER = 9.80 BTU/WATT

NOTE: RATED WITH 7.62 METERS OF 3/4 IN. SUCTION AND 5/16 IN. LIQUID LINES

## TTB530CA WITH MCX536EB AT 0.43 CMS (915 CFM) GROSS CAPACITY IN KILOWATTS

Return Air DB/WB C	Outdoor Temperatures C						
	25	29	32	35	40	45	
21.0/14.5	Capacity kW	8.2	8.2	8.1	8.1	7.6	7.1
	Sensible kW	6.9	6.9	6.8	6.8	6.6	6.4
	SHR (%)	83	84	84	84	86	89
	Compressor kW	1.9	2.1	2.2	2.3	2.5	2.6
24.0/17.0	Capacity kW	8.8	8.8	8.7	8.6	8.1	7.6
	Sensible kW	7.1	7.1	7.0	7.0	6.8	6.6
	SHR (%)	81	81	81	81	84	86
	Compressor kW	2.0	2.1	2.3	2.4	2.5	2.7
29.0/21.0	Capacity kW	9.4	9.3	9.3	9.2	8.6	8.1
	Sensible kW	7.2	7.2	7.2	7.1	6.9	6.7
	SHR (%)	77	77	77	78	80	83
	Compressor kW	2.1	2.2	2.3	2.5	2.6	2.8

VALUES AT ARI RATING CONDITIONS  
GROSS CAPACITY = 9.29 KW  
AIRFLOW = 0.43 CMS  
AIRFLOW = 915 CFM  
APP. DEW PT. = 13.5 DEG. C  
COMPRESSOR POWER = 2474 WATTS  
I.D. FAN POWER = 170 WATTS  
O.D. FAN POWER = 170 WATTS  
COP = 3.31  
EER = 11.30 BTU/WATT

NOTE: RATED WITH 7.62 METERS OF 3/4 IN. SUCTION AND 5/16 IN. LIQUID LINES



# Performance Data Cooling

English Units

## TTB536CA WITH MCX536EB AT 915 CFM

### GROSS CAPACITY IN BTU/H x 1000

O.D. D.B.	I.D. W.B.	TOTAL CAP.	SENS. CAP. AT ENTERING D.B. TEMP.				COMPR.	DEW	
			72	74	76	78	80	KW	DEW PT.
85	59	32.7	26.3	28.2	30.1	31.9	33.2*	2.54	45.3
	63	35.2	22.7	24.6	26.5	28.3	30.2	2.64	49.6
	67	37.8	18.7	20.6	22.5	24.3	26.2	2.75	53.7
	71	40.5	14.6	16.5	18.4	20.2	22.1	2.86	58.0
90	59	32.4	26.2	28.0	29.9	31.8	32.9*	2.67	45.5
	63	34.8	22.5	24.4	26.3	28.2	30.0	2.77	49.8
	67	37.4	18.5	20.4	22.3	24.2	26.0	2.88	53.9
	71	40.1	14.4	16.3	18.2	20.2	21.9	2.99	58.2
95	59	32.1	26.0	27.9	29.8	31.6	32.6*	2.80	45.8
	63	34.5	22.4	24.3	26.1	28.0	29.9	2.90	50.0
	67	37.0	18.4	20.2	22.1	24.0	25.9	3.01	54.1
	71	39.6	14.2	16.1	18.0	19.9	21.7	3.12	58.4
100	59	31.1	25.5	27.4	29.3	31.1*	31.9*	2.89	46.7
	63	33.4	21.9	23.8	25.6	27.5	29.4	2.99	50.5
	67	35.8	17.9	19.7	21.6	23.5	25.4	3.09	54.7
	71	38.3	13.7	15.6	17.5	19.4	21.2	3.19	59.0
105	59	30.1	25.1	26.9	28.8	30.3*	31.1*	2.98	47.2
	63	32.3	21.4	23.3	25.2	27.0	28.9	3.07	51.1
	67	34.7	17.4	19.3	21.1	23.0	24.9	3.17	55.3
	71	37.1	13.3	15.1	17.0	18.9	20.8	3.27	59.6
115	59	28.1	24.1	26.0	27.9	28.7*	29.4*	3.16	48.3
	63	30.2	20.5	22.3	24.2	26.1	28.0	3.24	52.2
	67	32.3	16.4	18.3	20.2	22.0	23.9	3.33	56.4
	71	34.5	12.3	14.2	16.0	17.9	19.8	3.41	60.7
120	59	27.1	23.7	25.5	27.2*	27.9*	28.5*	3.25	48.8
	63	29.1	20.0	21.9	23.7	25.6	27.5	3.33	52.7
	67	31.1	15.9	17.8	19.7	21.6	23.4	3.41	57.0
	71	33.3	11.8	13.7	15.6	17.4	19.3	3.49	61.3

VALUES AT 95/80/67 RATING CONDITIONS  
 GROSS CAPACITY = 37000 BTUH  
 AIRFLOW = 915 CFM  
 APP. DEW PT. = 54.1 DEG.F  
 COMPRESSOR POWER = 3008 WATTS  
 I.D. FAN POWER = 170 WATTS  
 O.D. FAN POWER = 170 WATTS  
 S.E.E.R. = 10.74 BTUH/WATT  
 E.E.R. = 11.05 BTUH/WATT

NOTE: RATED WITH 25 FEET OF 3/4 IN. SUCTION AND 5/16 IN. LIQUID LINES



# Performance Data Cooling

Metric Units

## TTB536CA WITH MCX536EB AT 0.43 CMS (915 CFM) GROSS CAPACITY IN KILOWATTS

Return Air DB/WB C	Outdoor Temperatures C						
	25	29	32	35	40	45	
21.0/14.5	Capacity kW	9.6	9.6	9.5	9.4	8.8	8.3
	Sensible kW	7.4	7.4	7.4	7.3	7.1	6.8
	SHR (%)	78	78	78	78	80	82
	Compressor kW	2.3	2.5	2.7	2.8	3.0	3.1
24.0/17.0	Capacity kW	10.3	10.2	10.1	10.0	9.4	8.9
	Sensible kW	7.6	7.6	7.6	7.5	7.3	7.0
	SHR (%)	74	75	75	75	77	79
	Compressor kW	2.4	2.6	2.8	2.9	3.0	3.2
29.0/21.0	Capacity kW	11.0	10.9	10.8	10.7	10.1	9.5
	Sensible kW	7.7	7.7	7.7	7.6	7.4	7.1
	SHR (%)	70	71	71	71	73	75
	Compressor kW	2.5	2.7	2.8	3.0	3.1	3.3

VALUES AT ARI RATING CONDITIONS  
 GROSS CAPACITY = 10.82 KW  
 AIRFLOW = 0.43 CMS  
 AIRFLOW = 915 CFM  
 APR. DEW PT. = 12.3 DEG. C  
 COMPRESSOR POWER = 3008 WATTS  
 I.D. FAN POWER = 170 WATTS  
 O.D. FAN POWER = 170 WATTS  
 COP = 3.24  
 EER = 11.05 BTU/WATT

NOTE: RATED WITH 7.62 METERS OF 3/4 IN. SUCTION AND 5/16 IN. LIQUID LINES



# Performance Data Cooling

English Units

**TTA030CD00A WITH MCX536EB  
AT 915 CFM  
GROSS CAPACITY IN BTU/H x 1000**

O.D. D.B.	I.D. W.B.	TOTAL CAP.	SENS. CAP. AT ENTERING D.B. TEMP.				COMPR. KW	
			72	74	76	78		80
85	61	29.4	21.1	23.0	24.7	26.4	27.4	2.32
	65	31.8	17.5	19.3	21.1	22.9	24.7	2.42
	67	33.0	15.6	17.4	19.2	21.0	22.8	2.46
	71	35.4	11.6	13.5	15.2	17.1	18.9	2.56
95	61	28.6	20.8	22.6	24.4	25.9	27.4	2.52
	65	30.8	17.2	18.9	20.8	22.5	24.3	2.62
	67	32.0	15.2	17.0	18.8	20.6	22.4	2.67
	71	34.4	11.3	13.1	14.9	16.7	18.6	2.78
105	61	27.4	20.0	21.8	23.5	25.0	26.4	2.75
	65	29.6	16.4	18.2	20.0	21.8	23.6	2.85
	67	30.8	14.5	16.3	18.1	19.9	21.7	2.90
	71	33.0	12.4	12.5	14.2	16.1	17.8	3.02
115	61	26.3	19.5	21.2	22.8	24.3	25.5	2.97
	65	28.4	15.8	17.6	19.4	21.2	23.0	3.09
	67	29.4	13.9	15.8	17.5	19.3	21.1	3.14
	71	31.6	10.1	11.9	13.6	15.4	17.2	3.25

\*Dry coil condition (Gross Capacity = Sensible Capacity)  
Gross Capacity and Comp. KW are valid only for Wet Coil

Performance at the Rating Conditions of 80/67 & 95 C  
 GROSS CAPACITY: 32.0 MBH  
 AIRFLOW: 915 CFM  
 SYSTEM POWER: 3157 WATTS  
 NOM. SYSTEM AMPS: 7.0 AMPS



# Performance Data Cooling

Metric Units

## TTA030CD00A WITH MCX536EB AT 1556 CMH

### GROSS CAPACITY IN KILOWATTS

O.D. D.B.	I.D. W.B.	TOTAL CAP.	SENS. CAP. AT ENTERING D.B. TEMP.					COMPR. KW
			22.5	23.5	24.5	25.5	26.5	
30	16	8.6	6.2	6.7	7.2	7.7	8.0	2.32
	18	9.3	5.1	5.7	6.2	6.7	7.2	2.42
	19.5	9.7	4.6	5.1	5.6	6.1	6.7	2.46
	22	10.4	3.4	4.0	4.5	5.0	5.5	2.56
35	16	8.4	6.1	6.6	7.1	7.6	8.0	2.52
	18	9.0	5.0	5.5	6.1	6.6	7.1	2.62
	19.5	9.4	4.4	5.0	5.5	6.0	6.6	2.67
	22	10.1	3.3	3.8	4.4	4.9	5.4	2.78
40	16	8.0	5.9	6.4	6.9	7.3	7.7	2.75
	18	8.7	4.8	5.3	5.9	6.4	6.9	2.85
	19.5	9.0	4.3	4.8	5.3	5.8	6.4	2.90
	22	9.7	3.6	3.7	4.2	4.7	5.2	3.02
45	16	7.7	5.7	6.2	6.7	7.1	7.5	2.97
	18	8.3	4.6	5.2	5.7	6.2	6.7	3.09
	19.5	8.6	4.1	4.6	5.1	5.7	6.2	3.14
	22	9.3	3.0	3.5	4.0	4.5	5.0	3.25

\*Dry coil condition (Gross Capacity = Sensible Capacity)  
Gross Capacity and Comp. KW are valid only for Wet Coil

Performance at the Rating Conditions of 26.5/19.5 & 35 C  
 GROSS CAPACITY: 9.4 KW  
 AIRFLOW: 1556 CMH  
 SYSTEM POWER: 3157 WATTS  
 NOM. SYSTEM AMPS: 7.0 AMPS



# Performance Data Cooling

English Units

**TTA040CD00A WITH MCX042EB  
AT 1245 CFM  
GROSS CAPACITY IN BTU/H x 1000**

O.D. D.B.	I.D. W.B.	TOTAL CAP.	SENS. CAP. AT ENTERING D.B. TEMP.			COMPR.	
			72	76	78	80	KW
85	59	41.7	33.5	37.0	40.5	42.2*	4.07
	63	44.9	29.0	32.5	36.0	38.4	4.23
	67	48.3	24.0	27.5	31.0	334	4.40
95	59	40.6	33.0	36.5	40.0	41.3*	4.47
	63	43.7	28.5	32.0	35.5	37.8	4.64
	67	47.0	23.5	27.0	30.5	32.8	4.83
105	63	40.9	27.2	30.7	34.2	36.6	4.90
	67	43.8	20.9	24.4	27.9	30.2	5.36
	71	47.0	17.0	20.5	24.0	26.4	2.29
115	63	38.0	25.9	29.4	32.9	35.3	5.16
	67	40.8	20.9	24.4	27.9	30.2	5.36
	71	43.7	15.7	19.2	22.7	25.1	5.65
120	63	36.6	25.3	28.8	32.3	34.6	5.30
	67	39.3	20.3	23.8	27.3	29.6	5.49
	71	42.0	15.1	18.6	22.1	24.4	5.70

VALUES AT 95/80/67 RATING CONDITIONS  
 GROSS CAPACITY = 47000 BTUH  
 AIRFLOW = 1245 CFM  
 APP. DEW PT. = 54.1 DEG. F  
 COMPRESSOR POWER = 4828 WATTS  
 I.D. FAN POWER = 187 WATTS  
 O.D. FAN POWER = 197 WATTS  
 E.E.R. = 9.20 BTUH/WATT

NOTE: RATED WITH 25 FEET OF 1 1/8 IN. SUCTION AND 3/8 IN. LIQUID LINE

\* DRY COIL CONDITION (TOTAL CAPACITY = SENSIBLE CAPACITY)  
 TOTAL CAPACITY, COMP. KW AND APP. DEW PT. ARE VALID ONLY FOR WET COIL





# Performance Data Cooling

Metric Units

## TTA040CD WITH MCX042EB AT 2117 CMH (1245 CFM) GROSS CAPACITY IN KILOWATTS

Return Air DB/WB C		Outdoor Temperatures C					
		25	29	32	35	40	45
21.0/14.5	Capacity kW	12.1	12.0	11.9	11.7	11.0	10.3
	Sensible kW	9.3	9.3	9.2	9.1	8.8	8.4
	SHR (%)	77	77	77	78	80	82
	Compressor kW	3.8	4.0	4.3	4.5	4.7	4.9
24.0/17.0	Capacity kW	13.0	12.9	12.7	12.5	11.8	1.0
	Sensible kW	9.6	9.5	9.5	9.4	9.0	8.7
	SHR (%)	74	74	75	75	77	79
	Compressor kW	3.9	4.2	4.4	4.6	4.9	5.1
29.0/21.0	Capacity kW	13.9	13.8	13.6	13.4	12.6	11.8
	Sensible kW	9.6	9.6	9.5	9.4	9.1	8.8
	SHR (%)	70	70	70	71	73	75
	Compressor kW	4.0	4.3	4.6	4.8	5.0	5.3

VALUES AT ARI RATING CONDITIONS

TOTAL NET CAPACITY = 13.57 KW

AIRFLOW = 0.59 CMS

AIRFLOW = 1245 CFM

APP. DEW PT. = 12.3 DEG. C

COMPRESSOR POWER = 4828 WATTS

I.D. FAN POWER = 187 WATTS

O.D. FAN POWER = 197 WATTS

NOTE: RATED WITH 7.62 METERS OF 1 1/8 IN. SUCTION AND 3/8 IN. LIQUID LINES

\*DRY COIL CONDITION (TOTAL CAPACITY = SENSIBLE CAPACITY)

TOTAL CAPACITY, COMP. KW AND APP. DEW PT. ARE VALID ONLY FOR WET COIL



# Performance Data Cooling

English Units

## TTA050CD WITH MCX048EB AT 1200 CFM

### GROSS CAPACITY IN BTU/H x 1000

O.D. D.B.	I.D. W.B.	TOTAL CAP.	SENS. CAP. AT ENTERING D.B. TEMP.			COMPR. KW	
			72	76	80		
85	59	49.3	36.3	39.9	43.4	45.7	4.67
	63	52.9	31.6	35.1	38.7	41.0	4.84
	67	56.8	26.6	30.1	33.6	36.0	5.00
95	59	48.4	35.9	39.4	42.9	45.3	5.13
	63	52.0	31.2	34.7	38.2	40.6	5.29
	67	55.7	26.1	29.6	33.2	35.5	5.47
105	63	48.9	29.8	33.3	36.8	39.2	5.57
	67	52.4	24.7	28.2	31.8	34.1	5.73
	71	55.9	19.5	23.0	26.6	28.9	5.91
115	63	45.8	28.4	31.9	35.5	37.8	5.84
	67	49.0	23.4	26.9	30.4	32.7	6.00
	71	52.3	18.1	21.7	25.2	27.5	6.16
120	63	44.2	27.8	31.3	34.8	37.1	5.99
	67	47.4	22.7	26.2	29.7	32.1	6.13
	71	50.6	17.5	21.0	24.5	26.9	6.29

VALUES AT 95/80/67 RATING CONDITIONS  
 GROSS CAPACITY = 55700 BTUH  
 AIRFLOW = 1200 CFM  
 APP. DEW PT. = 48.7 DEG. F  
 COMPRESSOR POWER = 5468 WATTS  
 I.D. FAN POWER = 187 WATTS  
 O.D. FAN POWER = 202 WATTS  
 E.E.R. = 9.75 BTUH/WATT

NOTE: RATED WITH 25 FEET OF 1 1/8 IN. SUCTION AND 3/8 IN. LIQUID LINE

\*DRY COIL CONDITION (TOTAL CAPACITY = SENSIBLE CAPACITY)  
 TOTAL CAPACITY, COMP. KW AND APP. DEW PT. ARE VALID ONLY FOR WET COIL  
 ALL TEMPERATURES IN DEGREES F.

## TTA060CD WITH MCX060EB AT 1315 CFM

### GROSS CAPACITY IN BTU/H x 1000

O.D. D.B.	I.D. W.B.	TOTAL CAP.	SENS. CAP. AT ENTERING D.B. TEMP.			COMPR. KW	
			72	76	80		
85	59	60.1	44.0	47.9	51.9	54.5	6.05
	63	64.7	38.6	42.6	46.5	49.2	6.24
	67	69.5	32.9	36.9	40.9	43.5	6.44
95	59	60.3	44.0	48.0	52.0	54.6	6.75
	63	64.9	38.7	42.7	46.6	49.3	6.95
	67	69.7	33.0	37.0	41.0	43.6	7.15
105	63	61.9	37.2	41.2	45.1	47.8	7.36
	67	66.5	31.6	35.6	39.5	42.2	7.55
	71	71.2	25.8	29.8	33.7	36.4	7.75
115	63	58.8	35.8	39.7	43.7	46.3	7.77
	67	63.2	30.2	34.1	38.1	40.7	7.95
	71	67.7	24.4	28.3	32.3	34.9	8.13
120	63	57.3	35.1	39.0	43.0	45.6	7.99
	67	61.6	29.5	33.4	37.4	40.0	8.15
	71	66.0	23.7	27.7	31.6	34.3	8.32

VALUES AT 95/80/67 RATING CONDITIONS  
 GROSS CAPACITY = 69700 BTUH  
 AIRFLOW = 1315 CFM  
 APP. DEW PT. = 47.2 DEG. F  
 COMPRESSOR POWER = 7154 WATTS  
 I.D. FAN POWER = 187 WATTS  
 O.D. FAN POWER = 386 WATTS  
 E.E.R. = 9.30 BTUH/WATT

NOTE: RATED WITH 25 FEET OF 1 1/8 IN. SUCTION AND 3/8 IN. LIQUID LINE

\*DRY COIL CONDITION (TOTAL CAPACITY = SENSIBLE CAPACITY)  
 TOTAL CAPACITY, COMP. KW AND APP. DEW PT. ARE VALID ONLY FOR WET COIL  
 ALL TEMPERATURES IN DEGREES F.



# Performance Data Cooling

Metric Units

## TTA050CD WITH MCX048EB AT 2040 CMS (1200 CFM) GROSS CAPACITY IN KILOWATTS

Return Air DB/WB C	Outdoor Temperatures C						
	25	29	32	35	40	45	
21.0/14.5	Capacity kW	14.2	14.3	14.1	14.0	13.2	12.5
	Sensible kW	10.1	10.1	10.1	10.0	9.6	9.2
	SHR (%)	71	71	71	72	73	74
	Compressor kW	0.8	0.9	1.0	1.0	1.1	1.1
24.0/17.0	Capacity kW	15.2	15.2	15.1	14.9	14.1	13.3
	Sensible kW	10.3	10.3	10.2	10.2	9.8	9.5
	SHR (%)	68	68	5.0	5.3	5.5	5.8
29.0/21.0	Capacity kW	16.2	16.2	16.1	15.9	15.0	14.2
	Sensible kW	10.3	10.3	10.3	10.2	9.9	9.5
	SHR (%)	64	64	64	64	66	67
	Compressor kW	4.6	4.9	5.2	5.4	5.7	5.9

VALUES AT ARI RATING CONDITIONS  
GROSS CAPACITY = 16.12 KW  
AIRFLOW = 0.57 CMS  
AIRFLOW = 1200 CFM  
APP. DEW PT. = 9.3 DEG. C  
COMPRESSOR POWER = 5468 WATTS  
I.D. FAN POWER = 187 WATTS  
O.D. FAN POWER = 202 WATTS

NOTE: RATED WITH 7.62 METERS OF 1 1/8 IN. SUCTION AND 3/8 IN. LIQUID LINES

\*DRY COIL CONDITION (TOTAL CAPACITY = SENSIBLE CAPACITY)  
TOTAL CAPACITY, COMP. KW AND APP. DEW PT. ARE VALID ONLY FOR WET COIL  
ALL TEMPERATURES IN DEGREES C.

## TTA060CD WITH MCX060EB AT 2236 CMS (1315 CFM) GROSS CAPACITY IN KILOWATTS

Return Air DB/WB C	Outdoor Temperatures C						
	25	29	32	35	40	45	
21.0/14.5	Capacity kW	17.1	17.4	17.4	17.5	16.7	16.0
	Sensible kW	12.2	12.3	12.4	12.4	12.0	11.6
	SHR (%)	71	71	71	71	72	72
	Compressor kW	5.5	6.0	6.4	6.8	7.1	7.5
24.0/17.0	Capacity kW	18.3	18.6	18.7	18.7	17.9	17.1
	Sensible kW	12.3	12.5	12.5	12.5	12.1	11.8
	SHR (%)	68	67	67	67	68	69
	Compressor kW	5.7	6.2	6.5	6.9	7.3	7.7
29.0/21.0	Capacity kW	19.5	19.9	19.9	19.9	19.1	18.3
	Sensible kW	12.3	12.4	12.5	12.5	12.1	11.8
	SHR (%)	63	63	63	63	63	65
	Compressor kW	5.8	6.3	6.7	7.1	7.5	7.8

VALUES AT ARI RATING CONDITIONS  
GROSS CAPACITY = 20.23 KW  
AIRFLOW = 0.62 CMS  
AIRFLOW = 1315 CFM  
APP. DEW PT. = 8.4 DEG. C  
COMPRESSOR POWER = 7154 WATTS  
I.D. FAN POWER = 187 WATTS  
O.D. FAN POWER = 386 WATTS

NOTE: RATED WITH 7.62 METERS OF 1 1/8 IN. SUCTION AND 3/8 IN. LIQUID LINES

\*DRY COIL CONDITION (TOTAL CAPACITY = SENSIBLE CAPACITY)  
TOTAL CAPACITY, COMP. KW AND APP. DEW PT. ARE VALID ONLY FOR WET COIL  
ALL TEMPERATURES IN DEGREES C.



# Performance Data Cooling

English Units

**TTK512PB00A WITH MCX512EB  
AT 400 CFM  
GROSS CAPACITY IN BTU/H x 1000**

O.D. D.B.	I.D. W.B.	TOTAL CAP.	SENS. CAP. AT ENTERING D.B. TEMP.				COMPR. KW	
			72	74	76	78		80
85	61	11.3	9.3	10.1	10.8	11.6*	12.0*	0.97
	65	12.2	7.7	8.5	9.3	10.1	10.8	1.01
	67	12.7	6.8	7.6	8.4	9.2	10.0	1.03
	71	13.6	5.1	5.9	6.7	7.5	8.3	1.07
95	61	11.0	9.1	9.9	10.7	11.4*	12.0*	1.06
	65	11.9	7.5	8.3	9.1	9.9	10.7	1.10
	67	12.3	6.7	7.5	8.3	9.0	9.8	1.12
	71	13.2	5.0	5.7	6.6	7.3	8.1	1.16
105	61	10.5	8.8	9.6	10.3	11.0*	11.6*	1.15
	65	11.4	7.2	8.0	8.8	9.6	10.4	1.19
	67	11.8	6.4	7.1	7.9	8.7	9.5	1.22
	71	12.7	5.5	5.5	6.2	7.1	7.8	1.26
115	61	10.1	8.6	9.3	10.0	10.7*	11.2*	1.24
	65	10.9	6.9	7.7	8.5	9.3	10.1	1.29
	67	11.3	6.1	6.9	7.7	8.5	9.2	1.31
	71	12.2	4.4	5.2	6.0	6.8	7.6	1.36

\*Dry coil condition (Gross Capacity = Sensible Capacity)  
Gross Capacity and Comp. KW are valid only for Wet Coil

Performance at the Rating Conditions of 80/67 & 95 F  
 GROSS CAPACITY: 12.3 MBH  
 AIRFLOW: 400 CFM  
 SYSTEM POWER: 1330 WATTS  
 NOM. SYSTEM AMPS: 5.9 AMPS



# Performance Data Cooling

Metric Units

## TTK512PB00A WITH MCX512EB AT 680 CMH

### GROSS CAPACITY IN KILOWATTS

O.D. D.B.	I.D. W.B.	TOTAL CAP.	SENS. CAP. AT ENTERING D.B. TEMP.				COMPR. KW	
			22.5	23.5	24.5	25.5		26.5
30	16	3.3	2.7	3.0	3.2	3.4*	3.5*	0.97
	18	3.6	2.2	2.5	2.7	2.9	3.2	1.01
	19.5	3.7	2.0	2.2	2.5	2.7	2.9	1.03
	22	4.0	1.5	1.7	2.0	2.2	2.4	1.07
35	16	3.2	2.7	2.9	3.1	3.3*	3.5*	1.06
	18	3.5	2.2	2.4	2.7	2.9	3.1	1.10
	19.5	3.6	2.0	2.2	2.4	2.6	2.9	1.12
	22	3.9	1.5	1.7	1.9	2.1	2.4	1.16
40	16	3.1	2.6	2.8	3.0	3.2*	3.4*	1.15
	18	3.3	2.1	2.3	2.6	2.8	3.0	1.19
	19.5	3.5	1.9	2.1	2.3	2.6	2.8	1.22
	22	3.7	1.6	1.6	1.8	2.1	2.3	1.26
45	16	3.0	2.5	2.7	2.9	3.1*	3.3*	1.24
	18	3.2	2.0	2.3	2.5	2.7	3.0	1.29
	19.5	3.3	1.8	2.0	2.2	2.5	2.7	1.31
	22	3.6	1.3	1.5	1.8	2.0	2.2	1.36

\*Dry coil condition (Gross Capacity = Sensible Capacity)  
Gross Capacity and Comp. KW are valid only for Wet Coil

Performance at the Rating Conditions of 26.5/19.5 & 35 C  
 GROSS CAPACITY: 3.6 KW  
 AIRFLOW: 680 CMH  
 SYSTEM POWER: 1330 WATTS  
 NOM. SYSTEM AMPS: 5.9 AMPS



# Performance Data Cooling

English Units

## TTK512LB00B WITH MCX512EB AT 400 CFM GROSS CAPACITY IN BTU/H x 1000

O.D. D.B.	I.D. W.B.	TOTAL CAP.	SENS. CAP. AT ENTERING D.B. TEMP.					COMPR. KW
			72	74	76	78	80	
85	61	11.3	8.2	9.0	9.7	10.3	10.7	1.06
	65	12.2	6.8	7.5	8.2	9.0	9.6	1.10
	67	12.6	6.1	6.8	7.5	8.2	8.9	1.12
	71	13.6	4.5	5.3	5.9	6.7	7.4	1.17
95	61	11.0	8.1	8.8	9.5	10.1	10.7	1.15
	65	11.8	6.7	7.4	8.1	8.8	9.5	1.20
	67	12.3	5.9	6.7	7.4	8.1	8.8	1.22
	71	13.2	4.4	5.1	5.8	6.5	7.3	1.27
105	61	10.5	7.8	8.5	9.2	9.8	10.3	1.25
	65	11.3	6.4	7.1	7.8	8.5	9.2	1.30
	67	11.8	5.7	6.4	7.1	7.8	8.5	1.33
	71	12.6	4.9	4.9	5.6	6.3	7.0	1.38
115	61	10.1	7.6	8.3	8.9	9.5	10.0	1.36
	65	10.9	6.2	6.9	7.6	8.3	9.0	1.41
	67	11.3	5.4	6.2	6.8	7.5	8.2	1.43
	71	12.1	4.0	4.6	5.3	6.0	6.7	1.48

\*Dry coil condition (Gross Capacity = Sensible Capacity)  
Gross Capacity and Comp. KW are valid only for Wet Coil

Performance at the Rating Conditions of 80/67 & 95 F  
GROSS CAPACITY: 12.3 MBH  
AIRFLOW: 400 CFM  
SYSTEM POWER: 1415 WATTS  
NOM. SYSTEM AMPS: 6.7 AMPS

## TTK518LB00B WITH MCX518EB AT 475 CFM GROSS CAPACITY IN BTU/H x 1000

O.D. D.B.	I.D. W.B.	TOTAL CAP.	SENS. CAP. AT ENTERING D.B. TEMP.					COMPR. KW
			72	74	76	78	80	
85	61	16.8	12.1	13.1	14.1	15.1	15.7	1.51
	65	18.2	10.0	11.0	12.1	13.1	14.1	1.57
	67	18.9	8.9	9.9	11.0	12.0	13.0	1.60
	71	20.3	6.7	7.7	8.7	9.8	10.8	1.67
95	61	16.4	11.9	12.9	13.9	14.8	15.7	1.64
	65	17.6	9.8	10.8	11.9	12.9	13.9	1.71
	67	18.3	8.7	9.7	10.8	11.8	12.8	1.74
	71	19.7	6.5	7.5	8.5	9.5	10.6	1.81
105	61	15.7	11.5	12.5	13.4	14.3	15.1	1.79
	65	17.0	9.4	10.4	11.4	12.4	13.5	1.85
	67	17.6	8.3	9.3	10.3	11.3	12.4	1.89
	71	18.9	7.1	7.1	8.1	9.2	10.2	1.96
115	61	15.0	11.1	12.1	13.0	13.9	14.6	1.93
	65	16.2	9.0	10.1	11.1	12.1	13.1	2.01
	67	16.8	8.0	9.0	10.0	11.0	12.0	2.04
	71	18.1	5.8	6.8	7.8	8.8	9.8	2.12

\*Dry coil condition (Gross Capacity = Sensible Capacity)  
Gross Capacity and Comp. KW are valid only for Wet Coil

Performance at the Rating Conditions of 80/67 & 95 F  
GROSS CAPACITY: 18.3 MBH  
AIRFLOW: 475 CFM  
SYSTEM POWER: 1940 WATTS  
NOM. SYSTEM AMPS: 8.5 AMPS



# Performance Data Cooling

Metric Units

## TTK512LB00B WITH MCX512EB AT 680 CMH GROSS CAPACITY IN KILOWATTS

O.D. D.B.	I.D. W.B.	TOTAL CAP.	SENS. CAP. AT ENTERING D.B. TEMP.					COMPR. KW
			22.5	23.5	24.5	25.5	26.5	
30	16	3.3	2.4	2.6	2.8	3.0	3.1	1.06
	18	3.6	2.0	2.2	2.4	2.6	2.8	1.10
	19.5	3.7	1.8	2.0	2.2	2.4	2.6	1.12
	22	4.0	1.3	1.5	1.7	2.0	2.2	1.17
35	16	3.2	2.4	2.6	2.8	3.0	3.1	1.15
	18	3.5	2.0	2.2	2.4	2.6	2.8	1.20
	19.5	3.6	1.7	1.9	2.2	2.4	2.6	1.22
	22	3.9	1.3	1.5	1.7	1.9	2.1	1.27
40	16	3.1	2.3	2.5	2.7	2.9	3.0	1.25
	18	3.3	1.9	2.1	2.3	2.5	2.7	1.30
	19.5	3.5	1.7	1.9	2.1	2.3	2.5	1.33
	22	3.7	1.4	1.4	1.6	1.8	2.0	1.38
45	16	2.9	2.2	2.4	2.6	2.8	2.9	1.36
	18	3.2	1.8	2.0	2.2	2.4	2.6	1.41
	19.5	3.3	1.6	1.8	2.0	2.2	2.4	1.43
	22	3.5	1.2	1.4	1.6	1.8	2.0	1.48

\*Dry coil condition (Gross Capacity = Sensible Capacity)  
Gross Capacity and Comp. KW are valid only for Wet Coil

Performance at the Rating Conditions of 26.5/19.5 & 35 C  
GROSS CAPACITY: 3.6 KW  
AIRFLOW: 680 CMH  
SYSTEM POWER: 1415 WATTS  
NOM. SYSTEM AMPS: 6.7 AMPS

## TTK518LB00B WITH MCX518EB AT 808 CMH GROSS CAPACITY IN KILOWATTS

O.D. D.B.	I.D. W.B.	TOTAL CAP.	SENS. CAP. AT ENTERING D.B. TEMP.					COMPR. KW
			22.5	23.5	24.5	25.5	26.5	
30	16	4.9	3.5	3.8	4.1	4.4	4.6	1.51
	18	5.3	2.9	3.2	3.5	3.8	4.1	1.57
	19.5	5.5	2.6	2.9	3.2	3.5	3.8	1.60
	22	5.9	1.9	2.3	2.5	2.9	3.2	1.67
35	16	4.8	3.5	3.8	4.1	4.3	4.6	1.64
	18	5.2	2.9	3.2	3.5	3.8	4.1	1.71
	19.5	5.4	2.5	2.9	3.2	3.5	3.8	1.74
	22	5.8	1.9	2.2	2.5	2.8	3.1	1.81
40	16	4.6	3.4	3.7	3.9	4.2	4.4	1.79
	18	5.0	2.8	3.0	3.4	3.6	3.9	1.85
	19.5	5.2	2.4	2.7	3.0	3.3	3.6	1.89
	22	5.5	2.1	2.1	2.4	2.7	3.0	1.96
45	16	4.4	3.3	3.6	3.8	4.1	4.3	1.93
	18	4.8	2.7	3.0	3.2	3.6	3.8	2.01
	19.5	4.9	2.3	2.6	2.9	3.2	3.5	2.04
	22	5.3	1.7	2.0	2.3	2.6	2.9	2.12

\*Dry coil condition (Gross Capacity = Sensible Capacity)  
Gross Capacity and Comp. KW are valid only for Wet Coil

Performance at the Rating Conditions of 26.5/19.5 & 35 C  
GROSS CAPACITY: 5.4 KW  
AIRFLOW: 808 CMH  
SYSTEM POWER: 1940 WATTS  
NOM. SYSTEM AMPS: 8.5 AMPS



# Performance Data Cooling

English Units

## TTK524LB00C WITH MCX524EB AT 675 CFM

### GROSS CAPACITY IN BTU/H x 1000

O.D. D.B.	I.D. W.B.	TOTAL CAP.	SENS. CAP. AT ENTERING D.B. TEMP.				COMPR. KW	
			72	74	76	78		80
85	61	22.5	16.1	17.5	18.9	20.2	20.9	2.18
	65	24.3	13.4	14.7	16.1	17.5	18.8	2.28
	67	25.2	11.9	13.3	14.7	16.0	17.4	2.32
	71	27.1	8.9	10.3	11.6	13.1	14.4	2.41
95	61	21.9	15.9	17.2	18.6	19.8	20.9	2.37
	65	23.6	13.1	14.4	15.8	17.2	18.6	2.47
	67	24.5	11.6	13.0	14.4	15.7	17.1	2.52
	71	26.3	8.7	10.0	11.4	12.7	14.2	2.62
105	61	21.0	15.3	16.7	18.0	19.1	20.2	2.58
	65	22.7	12.6	13.9	15.3	16.6	18.0	2.68
	67	23.5	11.1	12.4	13.8	15.2	16.6	2.73
	71	25.2	9.5	9.5	10.9	12.3	13.6	2.84
115	61	20.1	14.9	16.2	17.4	18.5	19.5	2.80
	65	21.7	12.1	13.5	14.8	16.2	17.5	2.90
	67	22.5	10.6	12.1	13.3	14.7	16.1	2.95
	71	24.2	7.7	9.1	10.4	11.8	13.1	3.06

\*Dry coil condition (Gross Capacity = Sensible Capacity)  
Gross Capacity and Comp. KW are valid only for Wet Coil

Performance at the Rating Conditions of 80/67 & 95 F  
GROSS CAPACITY: 24.5 MBH  
AIRFLOW: 675 CFM  
SYSTEM POWER: 2762 WATTS  
NOM. SYSTEM AMPS: 11.9 AMPS

## TTK530LB00B WITH MCX536EB AT 915 CFM

### GROSS CAPACITY IN BTU/H x 1000

O.D. D.B.	I.D. W.B.	TOTAL CAP.	SENS. CAP. AT ENTERING D.B. TEMP.				COMPR. KW	
			72	74	76	78		80
85	61	29.1	21.5	23.4	25.2	26.9	28.0	2.93
	65	31.4	17.8	19.7	21.5	23.4	25.2	3.05
	67	32.6	15.9	17.7	19.6	21.4	23.2	3.10
	71	35.0	11.9	13.8	15.5	17.5	19.2	3.23
95	61	28.3	21.3	23.0	24.9	26.4	28.0	3.18
	65	30.5	17.5	19.3	21.2	23.0	24.8	3.30
	67	31.7	15.5	17.4	19.2	21.0	22.9	3.37
	71	34.0	11.6	13.4	15.2	17.0	18.9	3.50
105	61	27.1	20.4	22.3	24.0	25.5	26.9	3.46
	65	29.3	16.8	18.6	20.4	22.2	24.1	3.59
	67	30.5	14.8	16.6	18.5	20.3	22.1	3.66
	71	32.6	12.7	12.7	14.5	16.4	18.2	3.81
115	61	26.0	19.9	21.7	23.3	24.8	26.1	3.75
	65	28.0	16.2	18.0	19.8	21.6	23.4	3.89
	67	29.1	14.2	16.1	17.8	19.7	21.5	3.96
	71	31.3	10.3	12.1	13.9	15.8	17.6	4.10

\*Dry coil condition (Gross Capacity = Sensible Capacity)  
Gross Capacity and Comp. KW are valid only for Wet Coil

Performance at the Rating Conditions of 80/67 & 95 F  
GROSS CAPACITY: 31.7 MBH  
AIRFLOW: 915 CFM  
SYSTEM POWER: 3844 WATTS  
NOM. SYSTEM AMPS: 17.7 AMPS





# Performance Data Cooling

Metric Units

## TTK524LB00C WITH MCX524EB AT 1148 CMH GROSS CAPACITY IN KILOWATTS

O.D. D.B.	I.D. W.B.	TOTAL CAP.	SENS. CAP. AT ENTERING D.B. TEMP.					COMPR. KW
			22.5	23.5	24.5	25.5	26.5	
30	16	6.6	4.7	5.1	5.5	5.9	6.1	2.18
	18	7.1	3.9	4.3	4.7	5.1	5.5	2.28
	19.5	7.4	3.5	3.9	4.3	4.7	5.1	2.32
	22	7.9	2.6	3.0	3.4	3.8	4.2	2.41
35	16	6.4	4.7	5.0	5.5	5.8	6.1	2.37
	18	6.9	3.8	4.2	4.6	5.0	5.4	2.47
	19.5	7.2	3.4	3.8	4.2	4.6	5.0	2.52
	22	7.7	2.5	2.9	3.3	3.7	4.2	2.62
40	16	6.1	4.5	4.9	5.3	5.6	5.9	2.58
	18	6.6	3.7	4.1	4.5	4.9	5.3	2.68
	19.5	6.9	3.3	3.6	4.0	4.4	4.8	2.73
	22	7.4	2.8	2.8	3.2	3.6	4.0	2.84
45	16	5.9	4.4	4.7	5.1	5.4	5.7	2.80
	18	6.3	3.5	3.9	4.3	4.7	5.1	2.90
	19.5	6.6	3.1	3.5	3.9	4.3	4.7	2.95
	22	7.1	2.3	2.7	3.1	3.5	3.9	3.06

\*Dry coil condition (Gross Capacity = Sensible Capacity)  
Gross Capacity and Comp. KW are valid only for Wet Coil

Performance at the Rating Conditions of 26.5/19.5 & 35 C  
GROSS CAPACITY: 7.2 KW  
AIRFLOW: 1148 CMH  
SYSTEM POWER: 2762 WATTS  
NOM. SYSTEM AMPS: 11.9 AMPS

## TTK530KB00B WITH MCX536EB AT 1556 CMH GROSS CAPACITY IN KILOWATTS

O.D. D.B.	I.D. W.B.	TOTAL CAP.	SENS. CAP. AT ENTERING D.B. TEMP.					COMPR. KW
			22.5	23.5	24.5	25.5	26.5	
30	16	8.5	6.3	6.9	7.4	7.9	8.2	2.93
	18	9.2	5.2	5.8	6.3	6.9	7.4	3.05
	19.5	9.6	4.7	5.2	5.7	6.3	6.8	3.10
	22	10.3	3.5	4.0	4.5	5.1	5.6	3.23
35	16	8.3	6.2	6.7	7.3	7.7	8.2	3.18
	18	8.9	5.1	5.6	6.2	6.7	7.3	3.30
	19.5	9.3	4.5	5.1	5.6	6.2	6.7	3.37
	22	10.0	3.4	3.9	4.5	5.0	5.6	3.50
40	16	7.9	6.0	6.5	7.0	7.5	7.9	3.46
	18	8.6	4.9	5.4	6.0	6.5	7.1	3.59
	19.5	8.9	4.3	4.9	5.4	5.9	6.5	3.66
	22	9.6	3.7	3.7	4.3	4.8	5.3	3.81
45	16	7.6	5.8	6.3	6.8	7.3	7.6	3.75
	18	8.2	4.7	5.3	5.8	6.3	6.9	3.89
	19.5	8.5	4.2	4.7	5.2	5.8	6.3	3.96
	22	9.2	3.0	3.5	4.1	4.6	5.1	4.10

\*Dry coil condition (Gross Capacity = Sensible Capacity)  
Gross Capacity and Comp. KW are valid only for Wet Coil

Performance at the Rating Conditions of 26.5/19.5 & 35 C  
GROSS CAPACITY: 9.3 KW  
AIRFLOW: 1556 CMH  
SYSTEM POWER: 3844 WATTS  
NOM. SYSTEM AMPS: 17.7 AMPS



# Performance Data Cooling

English Units

## TTK536KB00B WITH MCX536EB AT 915 CFM GROSS CAPACITY IN BTU/H x 1000

O.D. D.B.	I.D. W.B.	TOTAL CAP.	SENS. CAP. AT ENTERING D.B. TEMP.					COMPR. KW
			72	74	76	78	80	
85	61	33.9	24.4	26.5	28.5	30.5	31.7	3.28
	65	36.6	20.2	22.3	24.3	26.4	28.5	3.42
	67	38.0	18.0	20.1	22.2	24.2	26.3	3.48
	71	40.9	13.4	15.6	17.6	19.7	21.8	3.63
95	61	33.0	24.0	26.0	28.2	29.9	31.6	3.56
	65	35.6	19.8	21.8	23.9	26.0	28.1	3.71
	67	36.9	17.5	19.6	21.7	23.8	25.9	3.78
	71	39.7	13.1	15.1	17.2	19.2	21.4	3.93
105	61	31.6	23.1	25.2	27.2	28.8	30.5	3.88
	65	34.2	19.0	21.0	23.1	25.1	27.2	4.03
	67	35.5	16.8	18.8	20.9	22.9	25.0	4.11
	71	38.1	14.4	14.4	16.4	18.6	20.6	4.27
115	61	30.3	22.5	24.5	26.3	28.0	29.5	4.20
	65	32.7	18.3	20.4	22.4	24.5	26.5	4.36
	67	33.9	16.1	18.2	20.2	22.3	24.3	4.44
	71	36.5	11.7	13.7	15.7	17.8	19.9	4.60

\*Dry coil condition (Gross Capacity = Sensible Capacity)  
Gross Capacity and Comp. KW are valid only for Wet Coil

Performance at the Rating Conditions of 80/67 & 95 F  
GROSS CAPACITY: 36.9 MBH  
AIRFLOW: 915 CFM  
SYSTEM POWER: 4255 WATTS  
NOM. SYSTEM AMPS: 20.5 AMPS

## TTK536KD00B WITH MCX536EB AT 915 CFM GROSS CAPACITY IN BTU/H x 1000

O.D. D.B.	I.D. W.B.	TOTAL CAP.	SENS. CAP. AT ENTERING D.B. TEMP.					COMPR. KW
			72	74	76	78	80	
85	61	33.9	24.4	26.5	28.5	30.5	31.7	3.28
	65	36.6	20.2	22.3	24.3	26.4	28.5	3.42
	67	38.0	18.0	20.1	22.2	24.2	26.3	3.48
	71	40.9	13.4	15.6	17.6	19.7	21.8	3.63
95	61	33.0	24.0	26.0	28.2	29.9	31.6	3.56
	65	35.6	19.8	21.8	23.9	26.0	28.1	3.71
	67	36.9	17.5	19.6	21.7	23.8	25.9	3.78
	71	39.7	13.1	15.1	17.2	19.2	21.4	3.93
105	61	31.6	23.1	25.2	27.2	28.8	30.5	3.88
	65	34.2	19.0	21.0	23.1	25.1	27.2	4.03
	67	35.5	16.8	18.8	20.9	22.9	25.0	4.11
	71	38.1	14.4	14.4	16.4	18.6	20.6	4.27
115	61	30.3	22.5	24.5	26.3	28.0	29.5	4.20
	65	32.7	18.3	20.4	22.4	24.5	26.5	4.36
	67	33.9	16.1	18.2	20.2	22.3	24.3	4.44
	71	36.5	11.7	13.7	15.7	17.8	19.9	4.60

\*Dry coil condition (Gross Capacity = Sensible Capacity)  
Gross Capacity and Comp. KW are valid only for Wet Coil

Performance at the Rating Conditions of 80/67 & 95 F  
GROSS CAPACITY: 36.9 MBH  
AIRFLOW: 915 CFM  
SYSTEM POWER: 4255 WATTS  
NOM. SYSTEM AMPS: 9.1 AMPS



# Performance Data Cooling

Metric Units

## TTK536KB00B WITH MCX536EB AT 1556 CMH GROSS CAPACITY IN KILOWATTS

O.D. D.B.	I.D. W.B.	TOTAL CAP.	SENS. CAP. AT ENTERING D.B. TEMP.					COMPR. KW
			22.5	23.5	24.5	25.5	26.5	
30	16	9.9	7.1	7.8	8.4	8.9	9.3	3.28
	18	10.7	5.9	6.5	7.1	7.7	8.3	3.42
	19.5	11.1	5.3	5.9	6.5	7.1	7.7	3.48
	22	12.0	3.9	4.6	5.1	5.8	6.4	3.63
35	16	9.7	7.0	7.6	8.3	8.8	9.3	3.56
	18	10.4	5.8	6.4	7.0	7.6	8.2	3.71
	19.5	10.8	5.1	5.8	6.4	7.0	7.6	3.78
	22	11.6	3.8	4.4	5.0	5.6	6.3	3.93
40	16	9.3	6.8	7.4	8.0	8.4	8.9	3.88
	18	10.0	5.6	6.2	6.8	7.4	8.0	4.03
	19.5	10.4	4.9	5.5	6.1	6.7	7.3	4.11
	22	11.2	4.2	4.2	4.8	5.4	6.0	4.27
45	16	8.9	6.6	7.2	7.7	8.2	8.6	4.20
	18	9.6	5.4	6.0	6.6	7.2	7.8	4.36
	19.5	9.9	4.7	5.3	5.9	6.5	7.1	4.44
	22	10.7	3.4	4.0	4.6	5.2	5.8	4.60

\*Dry coil condition (Gross Capacity = Sensible Capacity)  
Gross Capacity and Comp. KW are valid only for Wet Coil

Performance at the Rating Conditions of 26.5/19.5 & 35 C  
GROSS CAPACITY: 10.8 KW  
AIRFLOW: 1556 CMH  
SYSTEM POWER: 4255 WATTS  
NOM. SYSTEM AMPS: 20.5 AMPS

## TTK536KD00B WITH MCX536EB AT 1556 CMH GROSS CAPACITY IN KILOWATTS

O.D. D.B.	I.D. W.B.	TOTAL CAP.	SENS. CAP. AT ENTERING D.B. TEMP.					COMPR. KW
			22.5	23.5	24.5	25.5	26.5	
30	16	9.9	7.1	7.8	8.4	8.9	9.3	3.28
	18	10.7	5.9	6.5	7.1	7.7	8.3	3.42
	19.5	11.1	5.3	5.9	6.5	7.1	7.7	3.48
	22	12.0	3.9	4.6	5.1	5.8	6.4	3.63
35	16	9.7	7.0	7.6	8.3	8.8	9.3	3.56
	18	10.4	5.8	6.4	7.0	7.6	8.2	3.71
	19.5	10.8	5.1	5.8	6.4	7.0	7.6	3.78
	22	11.6	3.8	4.4	5.0	5.6	6.3	3.93
40	16	9.3	6.8	7.4	8.0	8.4	8.9	3.88
	18	10.0	5.6	6.2	6.8	7.4	8.0	4.03
	19.5	10.4	4.9	5.5	6.1	6.7	7.3	4.11
	22	11.2	4.2	4.2	4.8	5.4	6.0	4.27
45	16	8.9	6.6	7.2	7.7	8.2	8.6	4.20
	18	9.6	5.4	6.0	6.6	7.2	7.8	4.36
	19.5	9.9	4.7	5.3	5.9	6.5	7.1	4.44
	22	10.7	3.4	4.0	4.6	5.2	5.8	4.60

\*Dry coil condition (Gross Capacity = Sensible Capacity)  
Gross Capacity and Comp. KW are valid only for Wet Coil

Performance at the Rating Conditions of 26.5/19.5 & 35 C  
GROSS CAPACITY: 10.8 KW  
AIRFLOW: 1556 CMH  
SYSTEM POWER: 4255 WATTS  
NOM. SYSTEM AMP: 9.1 AMPS



# Performance Data Cooling

English Units

### TTK042KD00A WITH MCX042EB AT 1200 CFM GROSS CAPACITY IN BTU/H x 1000

O.D. D.B.	I.D. W.B.	TOTAL CAP.	SENS. CAP. AT ENTERING D.B. TEMP.					COMPR. KW
			72	74	76	78	80	
85	61	38.7	26.1	28.4	30.6	32.7	33.9	3.65
	65	41.8	21.6	23.9	26.1	28.3	30.5	3.80
	67	43.4	19.3	21.5	23.7	25.9	28.2	3.87
	71	46.6	14.4	16.7	18.8	21.2	23.3	4.03
95	61	37.6	25.8	27.9	30.2	32.0	33.9	3.96
	65	40.6	21.2	23.4	25.7	27.8	30.1	4.12
	67	42.1	18.8	21.1	23.3	25.5	27.7	4.20
	71	45.3	14.0	16.2	18.5	20.6	23.0	4.36
105	61	36.1	24.8	27.0	29.1	30.9	32.7	4.31
	65	39.0	20.3	22.5	24.8	26.9	29.2	4.48
	67	40.5	18.0	20.1	22.4	24.6	26.8	4.56
	71	43.4	15.4	15.5	17.6	19.9	22.0	4.74
115	61	34.5	24.1	26.2	28.2	30.0	31.6	4.67
	65	37.3	19.6	21.8	24.0	26.2	28.4	4.85
	67	38.7	17.2	19.5	21.6	23.9	26.0	4.93
	71	41.6	12.5	14.7	16.9	19.1	21.3	5.11

\*Dry coil condition (Gross Capacity = Sensible Capacity)  
Gross Capacity and Comp. KW are valid only for Wet Coil

Performance at the Rating Conditions of 80/67 & 95 F  
GROSS CAPACITY: 42.1 MBH  
AIRFLOW: 1200 CFM  
SYSTEM POWER: 4715 WATTS  
NOM. SYSTEM AMPS: 9.9 AMPS

### TTK048KD00A WITH MCX048EB AT 1200 CFM GROSS CAPACITY IN BTU/H x 1000

O.D. D.B.	I.D. W.B.	TOTAL CAP.	SENS. CAP. AT ENTERING D.B. TEMP.					COMPR. KW
			72	74	76	78	80	
85	61	44.3	28.2	30.7	33.0	35.3	36.6	4.23
	65	47.9	23.3	25.8	28.2	30.6	32.9	4.40
	67	49.7	20.8	23.2	25.6	28.0	30.4	4.49
	71	53.4	15.5	18.0	20.3	22.8	25.2	4.67
95	61	43.1	27.8	30.1	32.6	34.6	36.6	4.59
	65	46.5	22.9	25.2	27.7	30.0	32.5	4.77
	67	48.2	20.3	22.7	25.1	27.5	29.9	4.87
	71	51.8	15.1	17.5	19.9	22.3	24.8	5.06
105	61	41.3	26.8	29.2	31.4	33.3	35.3	5.00
	65	44.7	21.9	24.3	26.7	29.1	31.5	5.19
	67	46.4	19.4	21.7	24.2	26.5	28.9	5.29
	71	49.7	16.6	16.7	19.0	21.5	23.8	5.50
115	61	39.6	26.0	28.3	30.4	32.4	34.1	5.41
	65	42.7	21.1	23.6	25.9	28.3	30.6	5.62
	67	44.3	18.6	21.1	23.3	25.8	28.1	5.72
	71	47.7	13.5	15.8	18.2	20.6	23.0	5.92

\*Dry coil condition (Gross Capacity = Sensible Capacity)  
Gross Capacity and Comp. KW are valid only for Wet Coil

Performance at the Rating Conditions of 80/67 & 95 F  
GROSS CAPACITY: 48.2 MBH  
AIRFLOW: 1200 CFM  
SYSTEM POWER: 5375 WATTS  
NOM. SYSTEM AMPS: 10.4 AMPS



# Performance Data Cooling

Metric Units

## TTK042KD00A WITH MCX042EB AT 2040 CMH GROSS CAPACITY IN KILOWATTS

O.D. D.B.	I.D. W.B.	TOTAL CAP.	SENS. CAP. AT ENTERING D.B. TEMP.					COMPR. KW
			22.5	23.5	24.5	25.5	26.5	
30	16	11.3	7.7	8.3	9.0	9.6	9.9	3.65
	18	12.2	6.3	7.0	7.6	8.3	8.9	3.80
	19.5	12.7	5.6	6.3	7.0	7.6	8.3	3.87
	22	13.7	4.2	4.9	5.5	6.2	6.8	4.03
35	16	11.0	7.5	8.2	8.8	9.4	9.9	3.96
	18	11.9	6.2	6.8	7.5	8.2	8.8	4.12
	19.5	12.3	5.5	6.2	6.8	7.5	8.1	4.20
	22	13.3	4.1	4.7	5.4	6.0	6.7	4.36
40	16	10.6	7.3	7.9	8.5	9.1	9.6	4.31
	18	11.4	6.0	6.6	7.3	7.9	8.5	4.48
	19.5	11.9	5.3	5.9	6.6	7.2	7.9	4.56
	22	12.7	4.5	4.5	5.2	5.8	6.5	4.74
45	16	10.1	7.1	7.7	8.3	8.8	9.3	4.67
	18	10.9	5.7	6.4	7.0	7.7	8.3	4.85
	19.5	11.3	5.0	5.7	6.3	7.0	7.6	4.96
	22	12.2	3.7	4.3	4.9	5.6	6.2	5.11

\*Dry coil condition (Gross Capacity = Sensible Capacity)  
Gross Capacity and Comp. KW are valid only for Wet Coil

Performance at the Rating Conditions of 26.5/19.5 & 35 C  
GROSS CAPACITY: 12.3 KW  
AIRFLOW: 2040 CMH  
SYSTEM POWER: 4715 WATTS  
NOM. SYSTEM AMPS: 9.9 AMPS

## TTK048KD00A WITH MCX048EB AT 2040 CMH GROSS CAPACITY IN KILOWATTS

O.D. D.B.	I.D. W.B.	TOTAL CAP.	SENS. CAP. AT ENTERING D.B. TEMP.					COMPR. KW
			22.5	23.5	24.5	25.5	26.5	
30	16	13.0	8.3	9.0	9.7	10.3	10.7	4.23
	18	14.0	6.8	7.6	8.2	9.0	9.6	4.40
	19.5	14.6	6.1	6.8	7.5	8.2	8.9	4.49
	22	15.6	4.6	5.3	6.0	6.7	7.4	4.67
35	16	12.6	8.1	8.8	9.5	10.1	10.7	4.59
	18	13.6	6.7	7.4	8.1	8.8	9.5	4.77
	19.5	14.1	5.9	6.7	7.4	8.1	8.8	4.87
	22	15.2	4.4	5.1	5.8	6.5	7.3	5.06
40	16	12.1	7.8	8.5	9.2	9.8	10.3	5.00
	18	13.1	6.4	7.1	7.8	8.5	9.2	5.19
	19.5	13.6	5.7	6.4	7.1	7.8	8.5	5.29
	22	14.6	4.9	4.9	5.6	6.3	7.0	5.50
45	16	11.6	7.6	8.3	8.9	9.5	10.0	5.41
	18	12.5	6.2	6.9	7.6	8.3	9.0	5.62
	19.5	13.0	5.4	6.2	6.8	7.6	8.2	5.72
	22	14.0	4.0	4.6	5.3	6.0	6.7	5.92

\*Dry coil condition (Gross Capacity = Sensible Capacity)  
Gross Capacity and Comp. KW are valid only for Wet Coil

Performance at the Rating Conditions of 26.5/19.5 & 35 C  
GROSS CAPACITY: 14.1 KW  
AIRFLOW: 2040 CMH  
SYSTEM POWER: 5375 WATTS  
NOM. SYSTEM AMPS: 10.4 AMPS



# Performance Data Cooling

English Units

**TTK060KD00A WITH MCX060EB  
AT 1350 CFM  
GROSS CAPACITY IN BTU/H x 1000**

O.D. D.B.	I.D. W.B.	TOTAL CAP.	SENS. CAP. AT ENTERING D.B. TEMP.				COMPR. KW	
			72	74	76	78		80
85	61	51.5	32.2	35.1	37.7	40.3	41.9	5.41
	65	55.6	26.7	29.5	32.2	35.0	37.7	5.64
	67	57.7	23.8	26.5	29.3	32.0	34.8	5.74
	71	62.0	17.8	20.6	23.2	26.1	28.8	5.98
95	61	50.1	31.8	34.5	37.3	39.6	41.9	5.87
	65	54.0	26.2	28.9	31.7	34.4	37.1	6.11
	67	56.0	23.2	26.0	28.7	31.5	34.2	6.24
	71	60.2	17.3	20.0	22.8	25.5	28.4	6.48
105	61	48.0	30.6	33.3	35.9	38.1	40.3	6.40
	65	51.9	25.1	27.8	30.6	33.2	36.0	6.65
	67	53.9	22.2	24.9	27.6	30.3	33.1	6.77
	71	57.8	19.0	19.1	21.7	24.5	27.2	7.04
115	61	46.0	29.8	32.4	34.8	37.1	39.0	6.93
	65	49.6	24.2	26.9	29.6	32.4	35.0	7.20
	67	51.5	21.2	24.1	26.7	29.5	32.1	7.32
	71	55.4	15.5	18.1	20.8	23.6	26.3	7.58

\*Dry coil condition (Gross Capacity = Sensible Capacity)  
Gross Capacity and Comp. KW are valid only for Wet Coil

Performance at the Rating Conditions of 80/67 & 95 F  
 GROSS CAPACITY: 56.0 MBH  
 AIRFLOW: 1350 CFM  
 SYSTEM POWER: 6755 WATTS  
 NOM. SYSTEM AMPS: 12.7 AMPS



# Performance Data Cooling

Metric Units

## TTK060KD00A WITH MCX060EB AT 2295 CMH

### GROSS CAPACITY IN KILOWATTS

O.D. D.B.	I.D. W.B.	TOTAL CAP.	SENS. CAP. AT ENTERING D.B. TEMP.					COMPR. KW
			22.5	23.5	24.5	25.5	26.5	
30	16	15.1	9.4	10.5	11.1	11.8	12.3	5.41
	18	16.3	7.8	8.6	9.4	10.3	11.0	5.64
	19.5	16.9	7.0	7.8	8.6	9.4	10.2	5.74
	22	18.2	5.2	6.0	6.8	7.7	8.4	5.98
35	16	14.7	9.3	10.1	10.9	11.6	12.3	5.87
	18	15.8	7.7	8.5	9.3	10.1	10.9	6.11
	19.5	16.4	6.8	7.6	8.4	9.2	10.0	6.24
	22	17.6	5.1	5.9	6.7	7.5	8.3	6.48
40	16	14.1	9.0	9.8	10.5	11.2	11.8	6.40
	18	15.2	7.4	8.1	9.0	9.7	10.6	6.65
	19.5	15.8	6.5	7.3	8.1	8.9	9.7	6.77
	22	16.9	5.6	5.6	6.4	7.2	8.0	7.04
45	16	13.5	8.7	9.5	10.2	10.9	11.4	6.93
	18	14.5	7.1	7.9	8.7	9.5	10.3	7.20
	19.5	15.1	6.2	7.1	7.8	8.6	9.4	7.32
	22	16.2	4.5	5.3	6.1	6.9	7.7	7.58

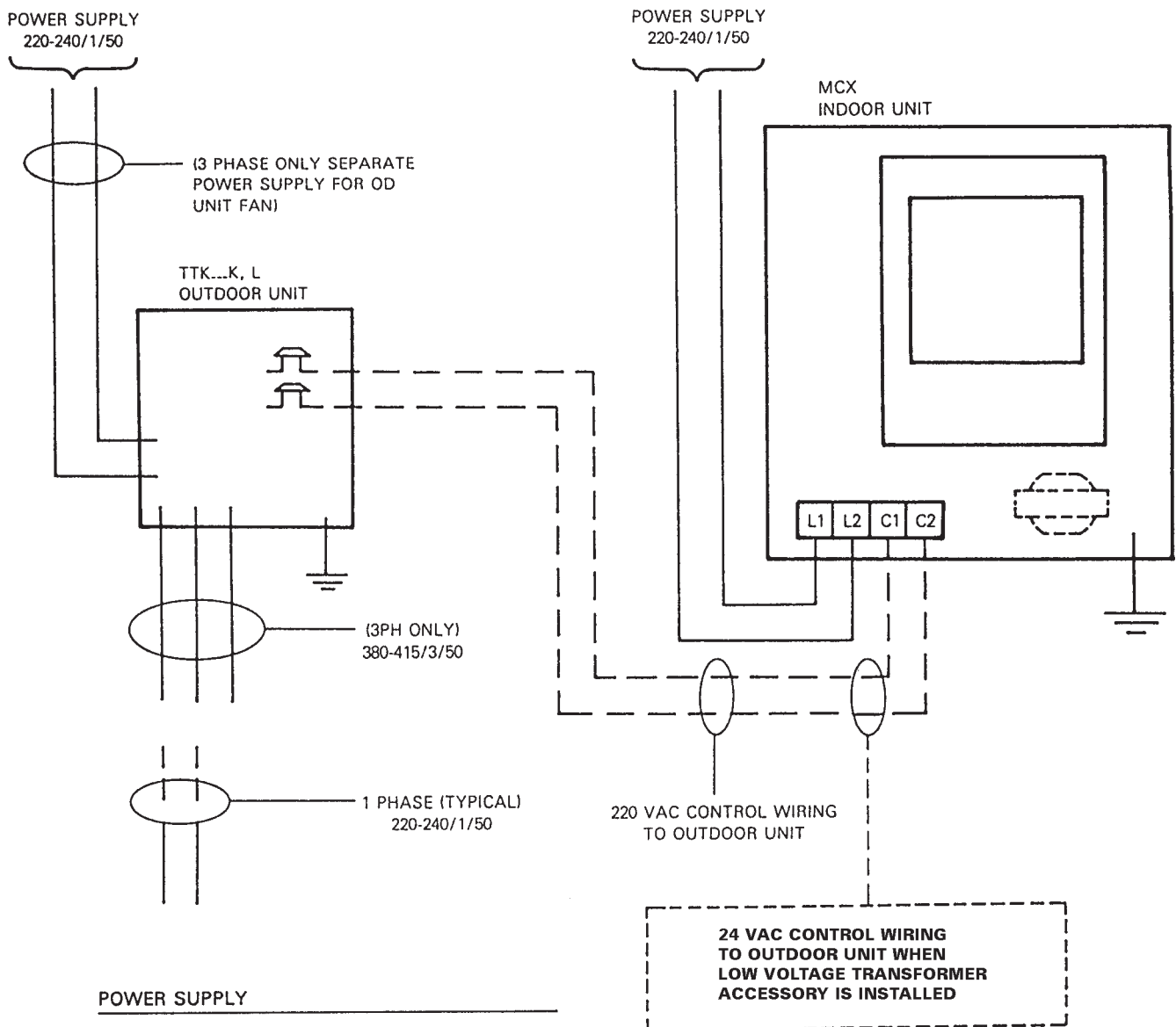
\*Dry coil condition (Gross Capacity = Sensible Capacity)  
Gross Capacity and Comp. KW are valid only for Wet Coil

Performance at the Rating Conditions of 26.5/19.5 & 35 C  
 GROSS CAPACITY: 16.4 KW  
 AIRFLOW: 2295 CMH  
 SYSTEM POWER: 6755 WATTS  
 NOM. SYSTEM AMPS: 12.7 AMPS



# System Wiring Diagram

## Typical Interconnecting Wiring FOR TTK-K/L . . . OUTDOOR UNITS WITH MCX INDOOR UNITS EQUIPPED WITH FACTORY WIRED REMOTE CONTROLLER.



**POWER SUPPLY**

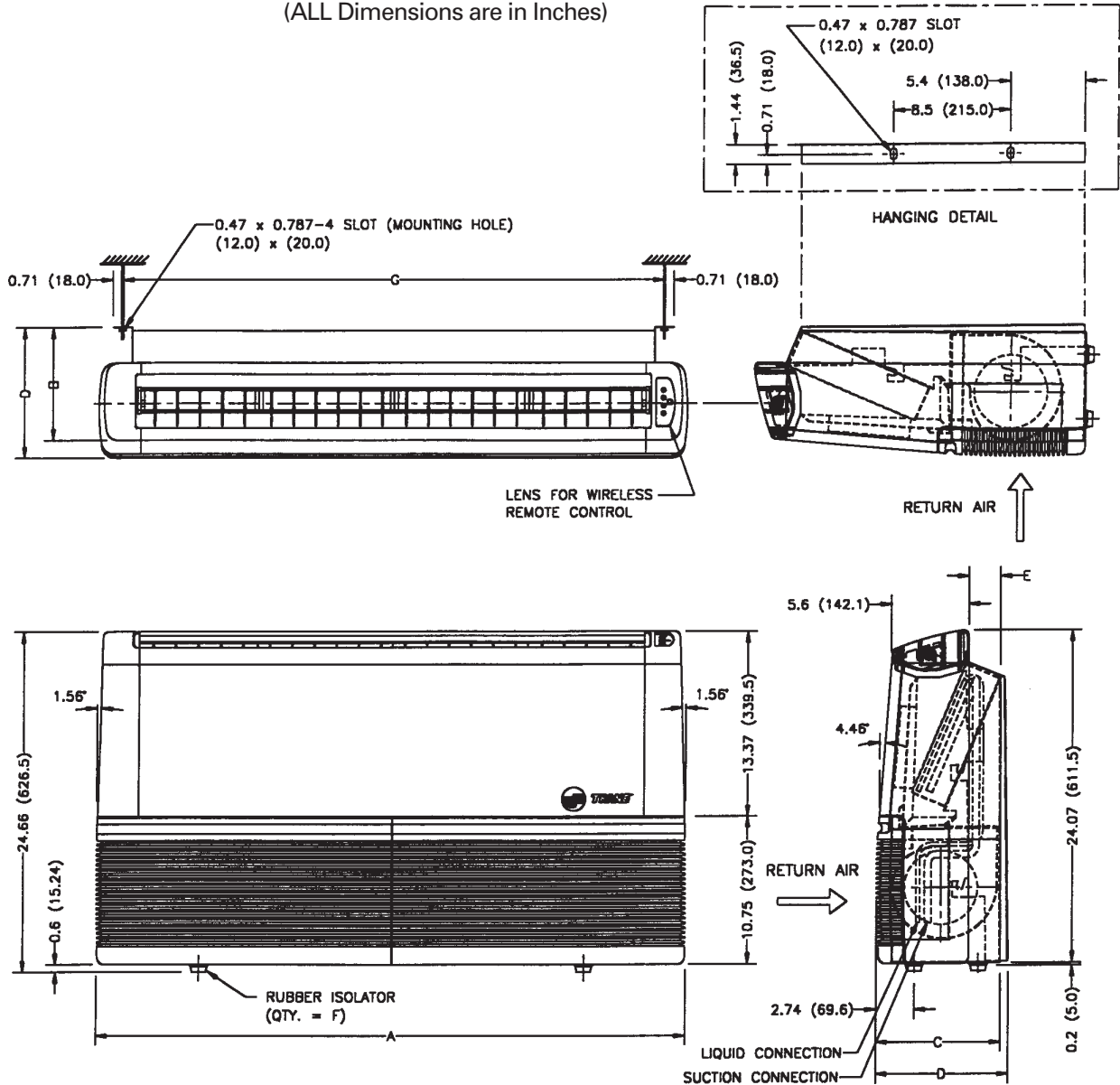
1. POWER WIRING AND GROUNDING OF EQUIPMENT MUST COMPLY WITH LOCAL CODES.
2. INSURE THAT POWER SUPPLY AGREES WITH EQUIPMENT NAMEPLATE.
3. USE COPPER CONDUCTOR ONLY.



# Dimensional Data

## MCX512-536E

(ALL Dimensions are in Inches)



### DIMENSIONAL DATA

MODEL	CONN. SIZES		A		B		C		D		E		F		G	
	LIQUID	SUCTION	IN.	(MM)	IN.	(MM)	IN.	(MM)	IN.	(MM)	IN.	(MM)	EACH	IN.	(MM)	
MCX512.518E	1/4 (6)	1/2 (13)	42.7	(1085.25)	8.2	(208.0)	9.0	(228.68)	9.6	(242.79)	2.3	(59.0)	4	39.3	(999.0)	
MCX524E	3/8 (10)	5/8 (16)	52.6	(1335.25)	9.2	(233.0)	10.0	(253.68)	10.5	(267.79)	3.3	(84.0)	4	49.2	(1249.0)	
MCX530E	3/8 (10)	5/8 (16)	62.4	(1585.25)	9.2	(233.0)	10.0	(253.68)	10.5	(267.79)	3.3	(84.0)	6	59.0	(1499.0)	
MCX536E	3/8 (10)	3/4 (19)	62.4	(1585.25)	9.2	(233.0)	10.0	(253.68)	10.5	(267.79)	3.3	(84.0)	6	59.0	(1499.0)	

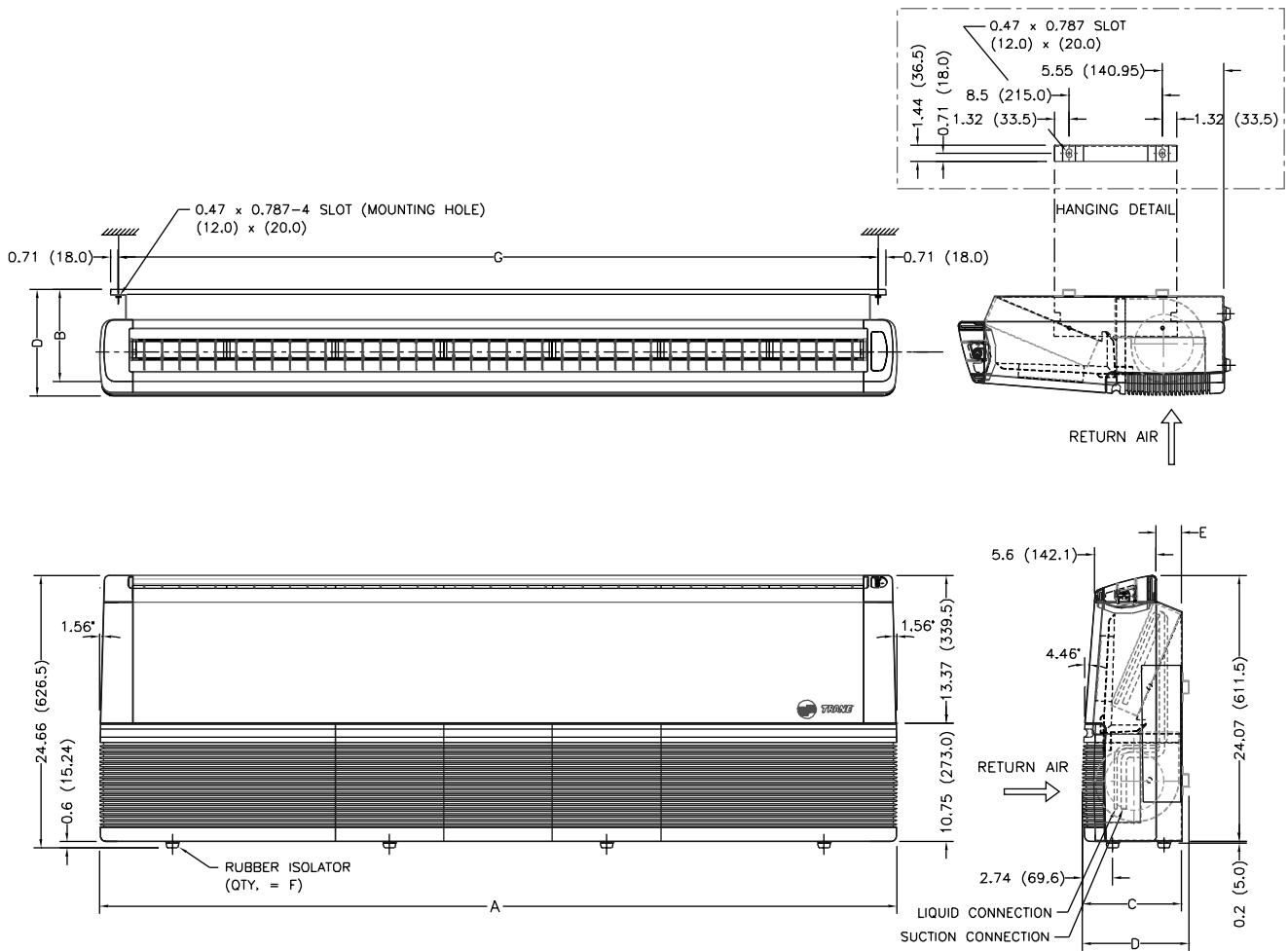
NOTE 1) SUCTION AND LIQUID LINES HAVE FLARE TYPE CONNECTIONS.

2) DIMENSIONS: INCHES (MILLIMETERS); 1 IN. = 25.4 MM.



# Dimensional Data

## MCX042-060E



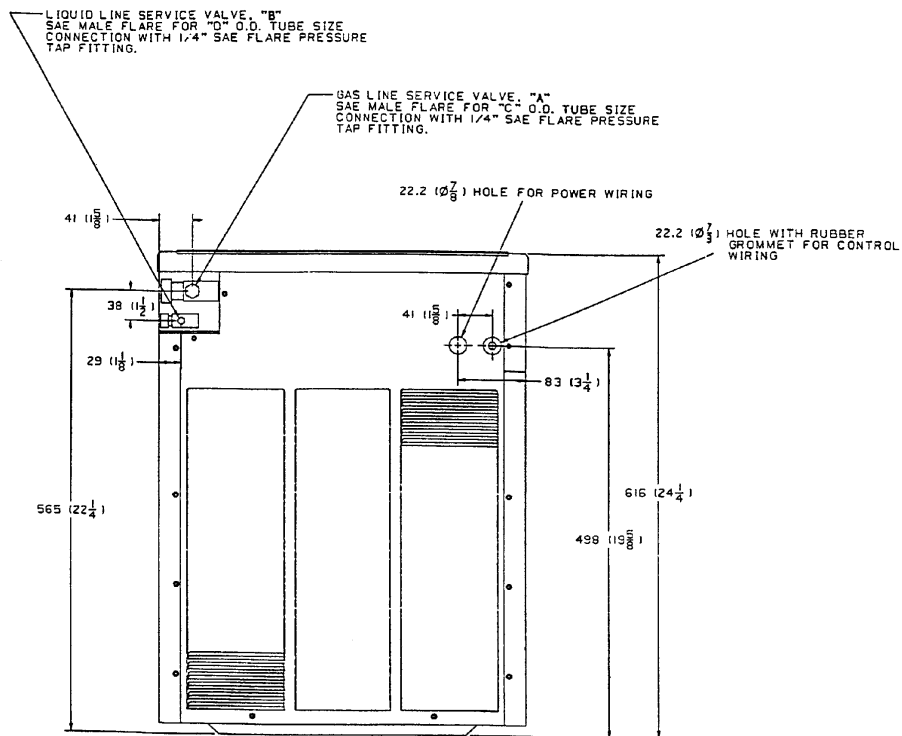
### DIMENSIONAL DATA

MODEL	CONN. SIZES		A		B		C		D		E		F	G	
	LIQUID	SUCTION	IN.	(MM)	IN.	(MM)	IN.	(MM)	IN.	(MM)	IN.	(MM)	EACH	IN.	(MM)
MCX042	3/8 (9.5)	7/8 (22.2)	72.3	(1835.25)	9.2	(233.0)	10.0	(253.68)	10.5	(267.79)	3.3	(84.0)	8	68.9	(1749.0)
MCX048	3/8 (9.5)	1-1/8 (28.6)	72.3	(1835.25)	9.2	(233.0)	10.0	(253.68)	10.5	(267.79)	3.3	(84.0)	8	68.9	(1749.0)
MCX060	3/8 (9.5)	1-1/8 (28.6)	82.1	(2085.25)	9.2	(233.0)	10.0	(253.68)	10.5	(267.79)	3.3	(84.0)	8	78.7	(1999.0)

NOTE: DIMENSIONS: INCHES (MILLIMETERS) 1 IN. = 25.4 MM.

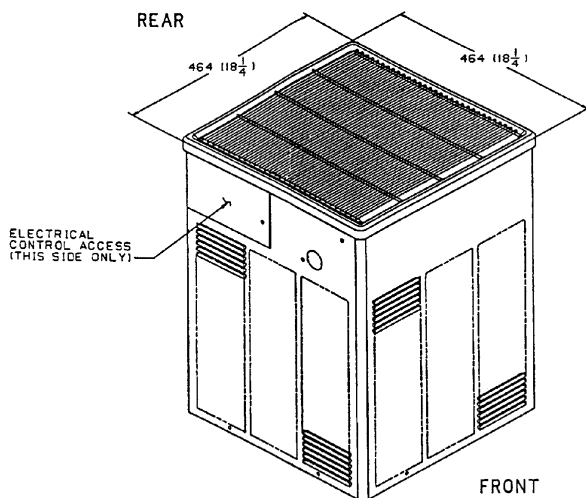
# Dimensional Data

## TTB510-520C



**REAR VIEW**

25.40 MILLIMETERS = (1 INCH)



Model	Refrigerant Line Connections	
	Liquid (in.) (mm)	Suction (in.) (mm)
TTB510C	1/4" (16)	5/8" (16)
TTB515C	1/4" (16)	5/8" (16)
TTB520C	5/16" (8)	3/4" (20)

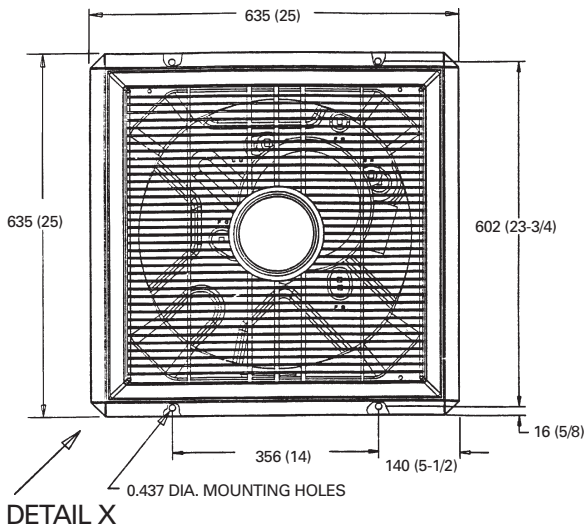


# Dimensional Data

## TTB524-536C

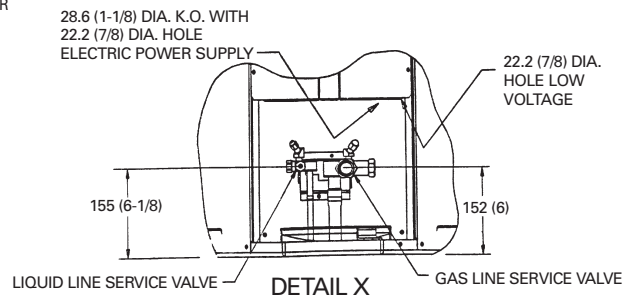
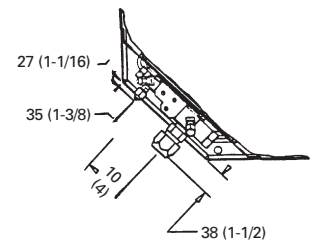
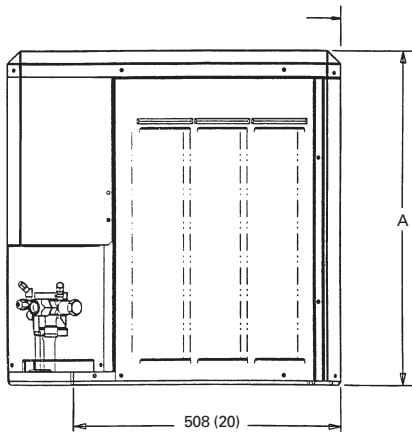
25.40 MILLIMETERS = (1 INCH)

MODEL	A	B	C	D	E
TTB524C	648	1 1/16 (25-1/2)	1/2	19 (3/4)	8 (5/16)
TTB530C	826	1 1/16 (32-1/2)	1/2	19 (3/4)	8 (5/16)



SERVICE PANEL  
ELECTRICAL AND REFRIGERANT  
COMPONENTS CLEARANCES  
PER PREVAILING CODES

TOP DISCHARGE AREA SHOULD BE UNRESTRICTED FOR AT LEAST 1524 (5 FEET) ABOVE UNIT. UNIT SHOULD BE PLACED SO ROOF RUN-OFF WATER DOES NOT POUR DIRECTLY ON UNIT AND SHOULD BE AT LEAST 305 (12") FROM WALL AND ALL SURROUNDING SHRUBBERY ON TWO SIDES. OTHER TWO SIDES UNRESTRICTED.



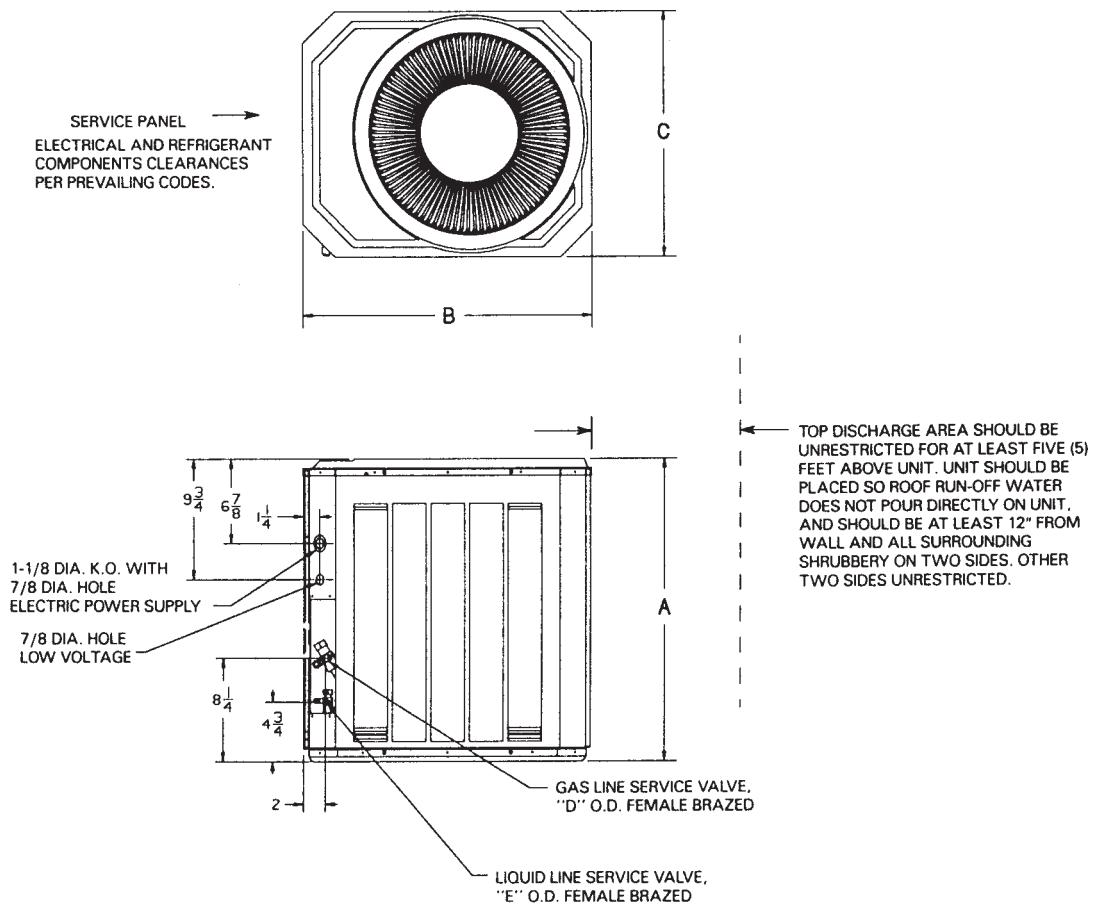
"C" SAE MALE FLARE FOR "E" O.D. TUBE SIZE CONNECTION WITH 1/4" SAE FLARE PRESSURE TAP FITTING.

"B" SAE MALE FLARE FOR "D" O.D. TUBE SIZE CONNECTION WITH 1/4" SAE FLARE PRESSURE TAP FITTING.

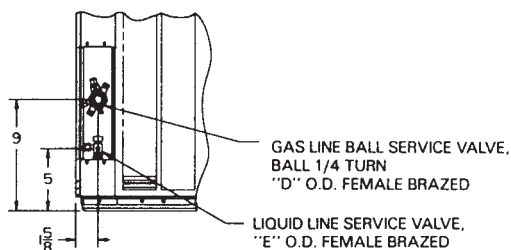
# Dimensional Data

## TTA030-060C

(ALL Dimensions are in Inches)



**FIG. 1**



**FIG. 2**

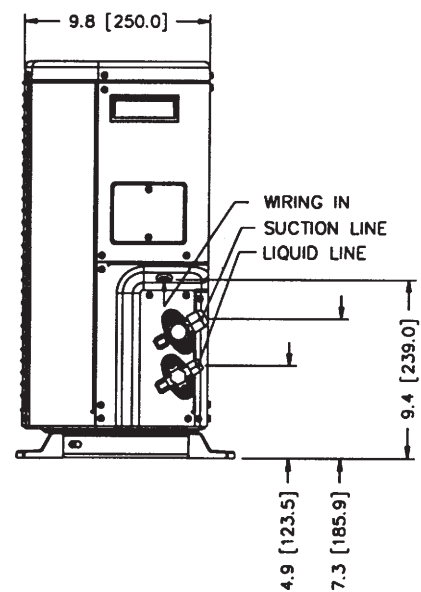
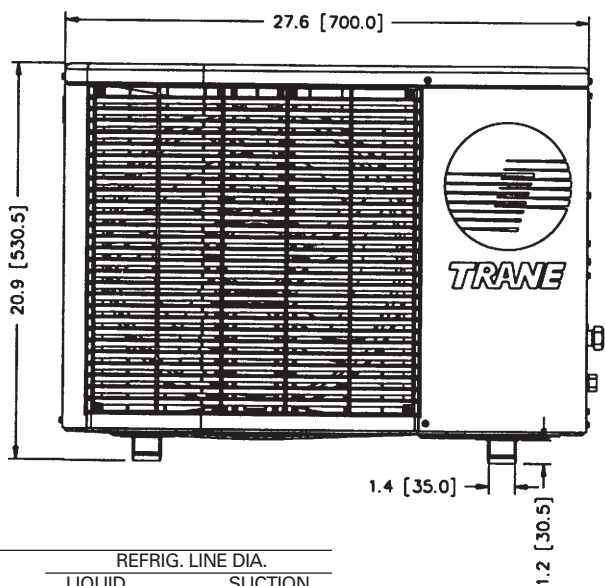
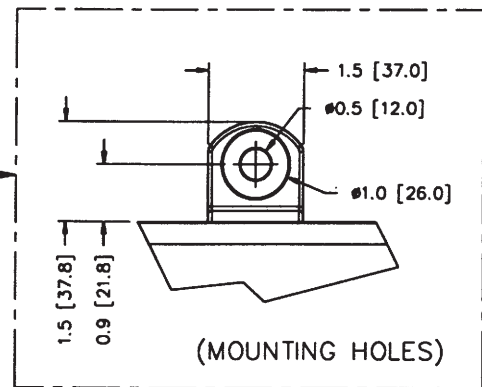
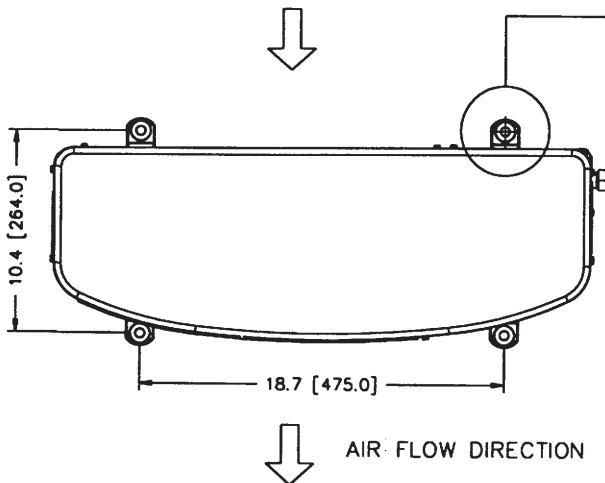
MODELS	FIG.	A	B	C	D	E
TTA030C	1	24 <sup>3</sup> / <sub>8</sub>	28 <sup>1</sup> / <sub>4</sub>	24 <sup>5</sup> / <sub>8</sub>	<sup>7</sup> / <sub>8</sub>	<sup>3</sup> / <sub>8</sub>
TTA040C	1	32 <sup>3</sup> / <sub>4</sub>	28 <sup>1</sup> / <sub>4</sub>	24 <sup>5</sup> / <sub>8</sub>	1 <sup>1</sup> / <sub>8</sub>	<sup>3</sup> / <sub>8</sub>
TTA050C	2	40 <sup>3</sup> / <sub>4</sub>	32 <sup>7</sup> / <sub>8</sub>	28 <sup>3</sup> / <sub>4</sub>	1 <sup>1</sup> / <sub>8</sub>	<sup>3</sup> / <sub>8</sub>
TTA060C	2	44 <sup>3</sup> / <sub>4</sub>	38 <sup>7</sup> / <sub>8</sub>	34 <sup>3</sup> / <sub>4</sub>	1 <sup>1</sup> / <sub>8</sub>	<sup>3</sup> / <sub>8</sub>

1 Inch = 25.4 MM

# Dimensional Data

## TTK509-512P

### MOUNTING DETAIL

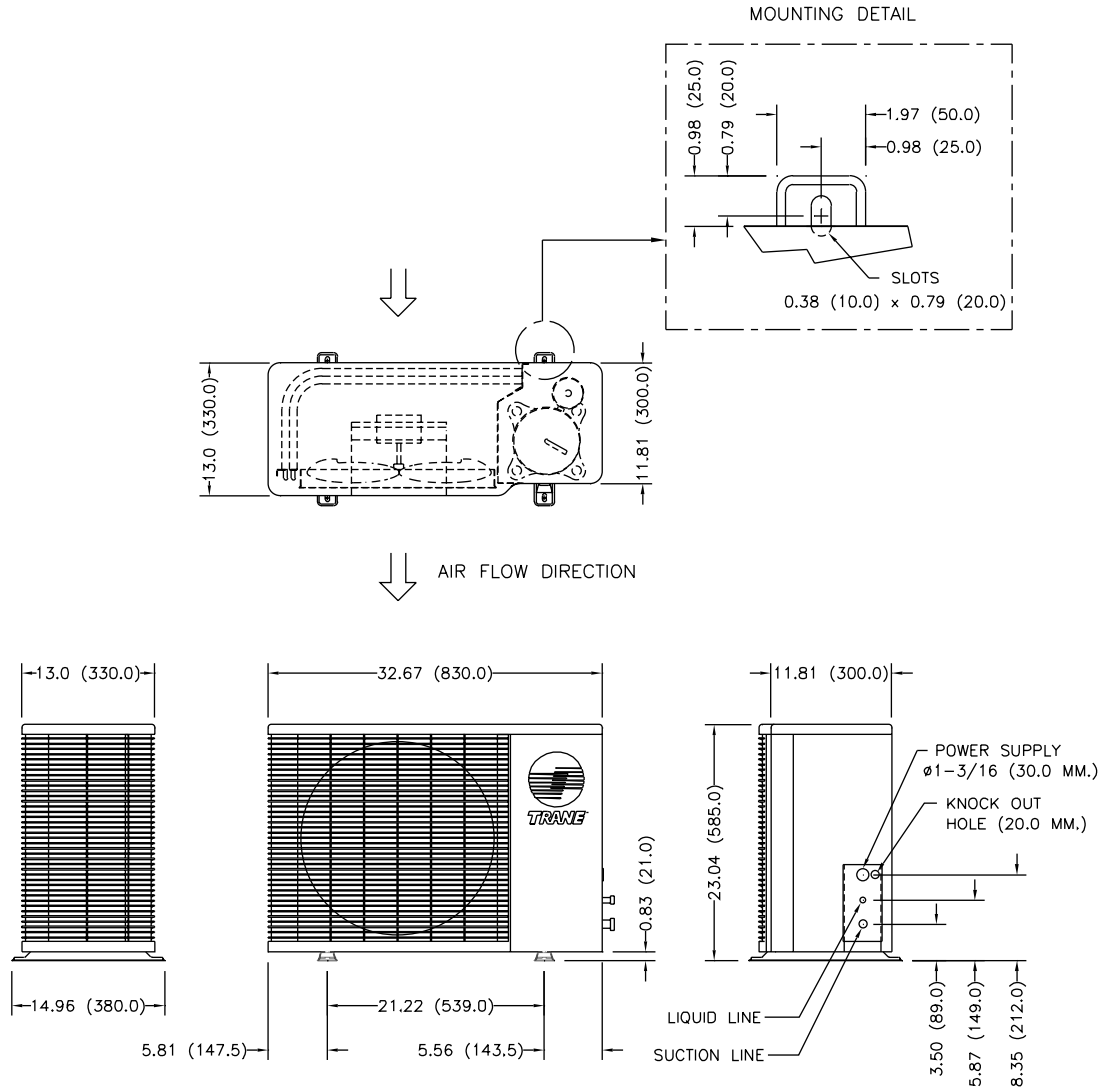


MODEL	REFRIG. LINE DIA.	
	LIQUID	SUCTION
TTK509	1/4" (6.35)	3/8" (9.53)
TTK512	1/4" (6.35)	1/2" (12.70)

NOTE 1. SUCTION AND LIQUID LINES ARE FLARE TYPE CONNECTIONS.  
 2. DIMENSIONS: INCHES (MILLIMETERS): 1 IN. = 25.40 MM

# Dimensional Data

## TTK512-524L

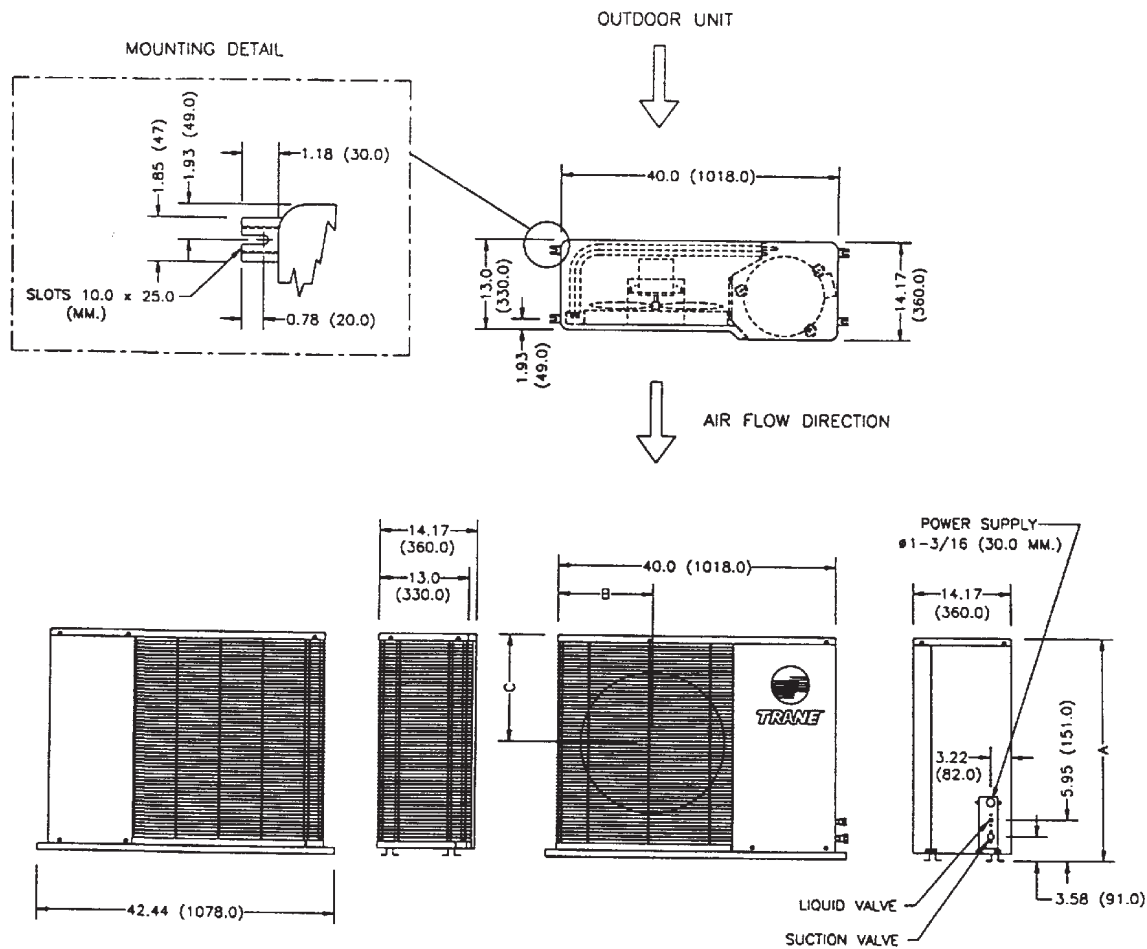


MODEL	REFRIG. LINE DIA.	
	LIQUID	SUCTION
TTK509MB/M1/LB	1/4 (6)	3/8 (10)
TTK512MB/LB/KB TTK512M1/L1/K1	1/4 (6)	1/2 (13)
TTK518MB/LB/KB TTK518M1/L1/K1		
TTK524MB/LB/KB TTK524M1/L1/K1	3/8 (10)	5/8 (16)

- NOTE**
- 1) SUCTION AND LIQUID LINE ARE FLARE TYPE CONNECTIONS.
  - 2) DIMENSIONS : INCHES (MILIMETERS) ; 1 IN. = 25.40 MM.
  - 3) THE "KB/K1" MODELS UTILIZE RECIPROCATING COMPRESSORS.
  - 4) THE "LB/L1" MODELS UTILIZE ROTARY COMPRESSORS.
  - 5) THE ABOVE MODELS UTILIZE ROTARY COMPRESSORS. CAPILLARY TUBE ASSEMBLY IS ALSO INCLUDED IN THE ABOVE MODELS.

# Dimensional Data

## TTK530-536K



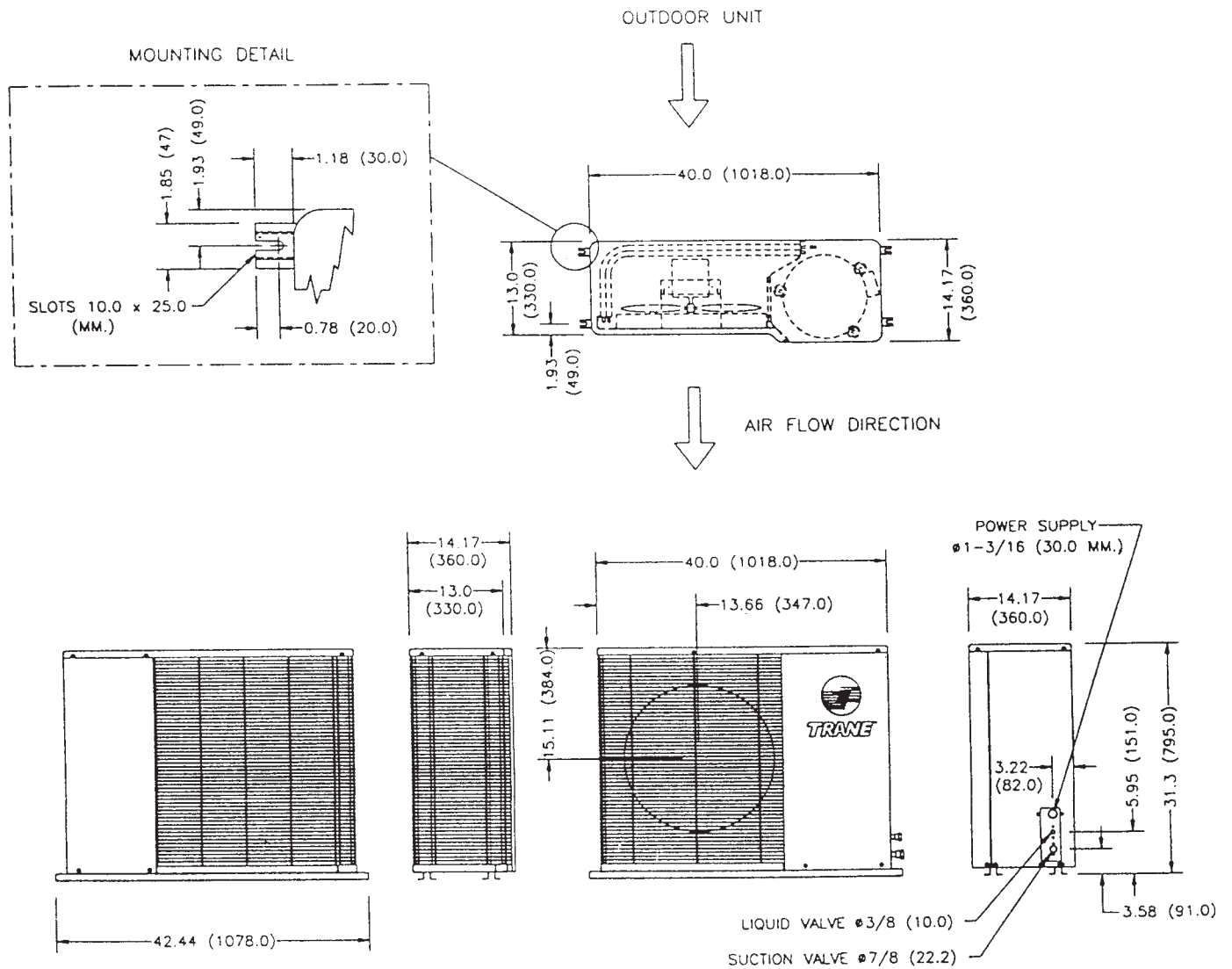
MODEL	REFRIG. LINE DIA.		A		B		C
	LIQUID	SUCTION	IN	(MM.)	IN	(MM.)	IN (MM.)
TTK530K	3/8" (10)	5/8" (16)	31.3	(795.0)	13.66	(347.0)	15.11 (384.0)
TTK536K	3/8" (10)	3/4" (19)					

- NOTES**
1. SUCTION AND LIQUID LINES ARE FLARE TYPE CONNECTIONS.
  2. DIMENSIONS: INCHES (MILLIMETERS); 1 IN. = 25.40 MM.
  3. THE ABOVE MODELS UTILIZE RECIPROCATING COMPRESSORS.



# Dimensional Data

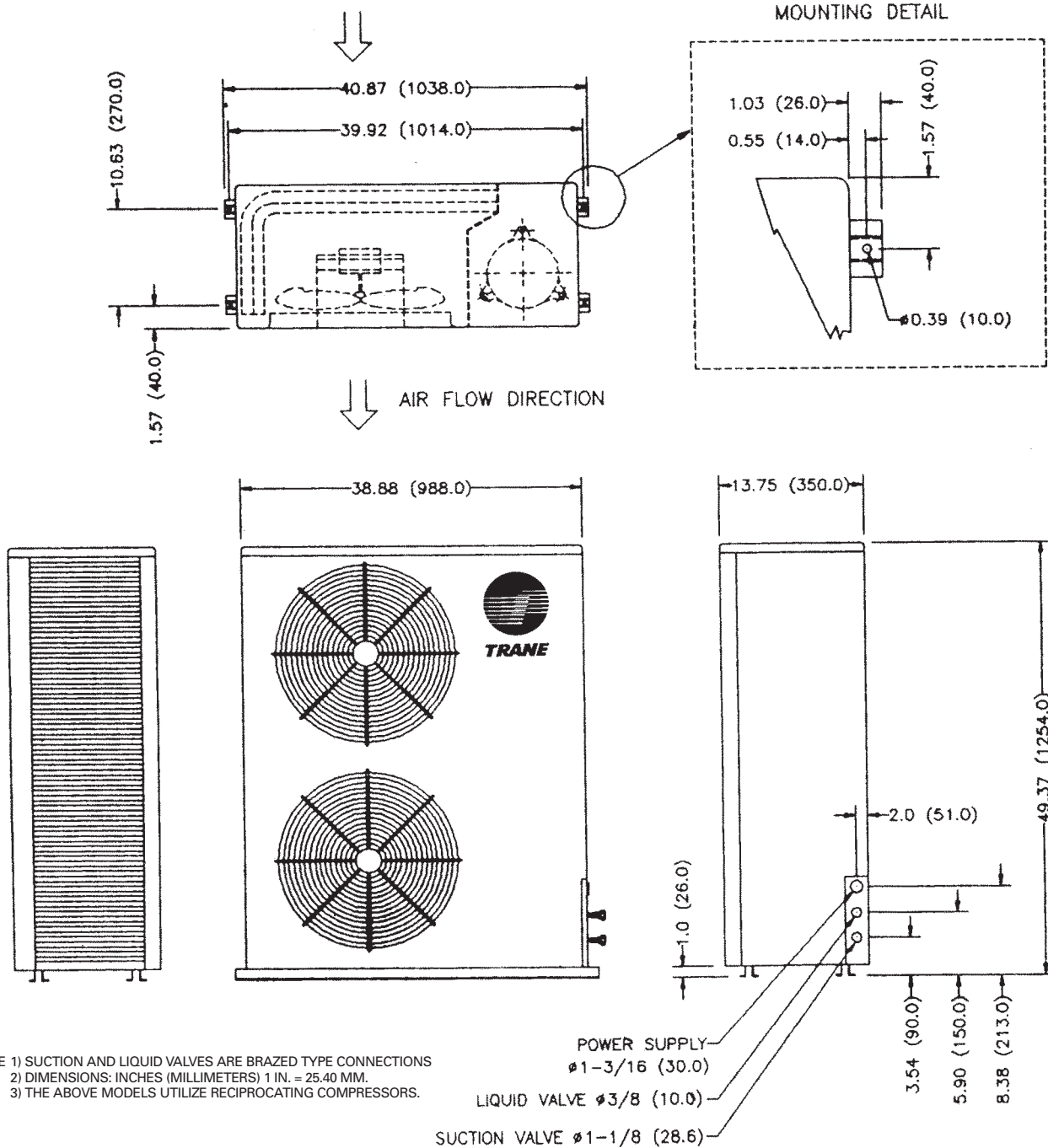
## TTK042K



NOTE 1) SUCTION AND LIQUID VALVES ARE BRAZED TYPE CONNECTIONS  
 2) DIMENSIONS: INCHES (MILLIMETERS) 1 IN. = 25.40 MM.  
 3) THE ABOVE MODELS UTILIZE RECIPROCATING COMPRESSORS.

# Dimensional Data

## TTK048-060K







**The Trane Company**  
*International Unitary Products Group*  
3600 Pammel Creek Road  
La Crosse, WI 54601-7599  
[www.trane.com](http://www.trane.com)  
*An American Standard Company*

---

File No.	MCX5-PRC804-EN	11/98
Stocking Location	La Crosse	

---

Since The Trane Company has a policy of continuous product improvement, it reserves the right to change design and specifications without notice.