



Installation

UHXA-IN-12A

Library	Service Literature
Product Section	Air Terminal Devices & Heat Products
Product	Unit Heaters - Electric
Model	UHXA
Literature Type	Installation
Sequence	12A
Date	April 1997
File No.	SV-TD-UH-UHXA-IN-12A-497
Supersedes	UHXA-IN-12-1192

Wall Mounting Kit

HLWM

3, 5, 7.5, 10, 15, 20, & 25 KW Units

9731

Since the Trane Co. has a policy of continuous product improvement, it reserves the right to change specifications and design without notice. The installation and servicing of equipment referred to in this booklet should be done by qualified, experienced technicians.

UHXA Floor Mounting Kit—HLWM Installation Instructions

Table of Contents:

- 2 UHXAFloor Mounting Kit—
HLWM Installation Instructions
- 3 Basic Mounting Kit
Installation
- 4 Wall Mounting Kit
Installation

Note: Check that your heater model number corresponds to the model number shown on the mounting kit carton.

⚠ Caution:
If installed on a structure that is to be transported, provide additional temporary support for the heater to prevent damage to the unit during transit.

The suspended weight on the arm assembly should not exceed 250 lb (114 KG.).

Refer to heater installation manual for mounting specifications and conditions.

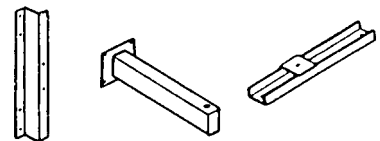
Installer Required To Supply:

A method to fasten the two Z Sections (1) to the supporting wall. This kit required at least four (4) 3/8" (9.5 mm) diameter, grade 5 bolts are suggested. However, any method providing the same or greater strength may be used.

A method to fasten the **arm assembly** (2) to the supporting structure. Four (4) 3/8" (9.5 mm) diameter, grade 5 bolts are suggested, however, any method providing the same or greater strength may be used.

Part Number	Item	Qty.	Description
51666-001	1	2	Z Section, Support
62036-002	2	1	Arm Assembly, Mounting
62037-001	3	1	Attachment, Assembly 3,5,7.5 K W
62037-002			Attachment, Assembly 10 K W
62037-003			Attachment, Assembly 15,20, 25 K W
93480-004	4	4	3/8" (9.5mm) Dia.UNC Nut
1766	5	4	3/8" (9.5mm) Dia. x 1" (25.4 mm) Bolt
43567-001	6	4	3/8" (9.5mm) Lock Washer
43566-002	7	2	5/8" (16mm) UNC x 1-1/4" (32 mm) Bolt
43567-002	8	2	5/8" (16mm) Lock Washer
43566-001	9	1	5/8" (16mm) UNC x 4-1/2" (114 mm) Bolt
43625-003	10	1	5/8" (16mm) Flat Washer

Arm Assembly Mounting



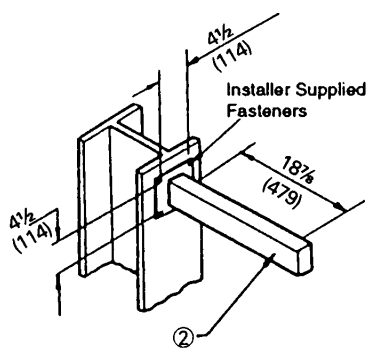
Basic Mounting Kit Installation

Basic Mounting Kit Installation

Note: Dimensions are in inches (mm).

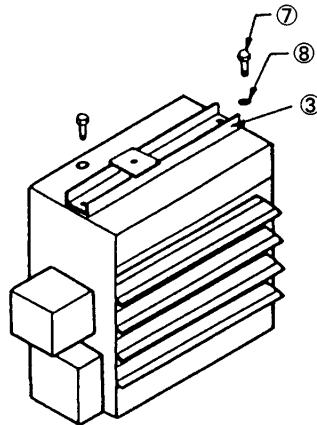
Step 1

Fasten **arm assembly** (2) to a surface or structure that will support the heater's weight using installer supplied fasteners.



Step 2

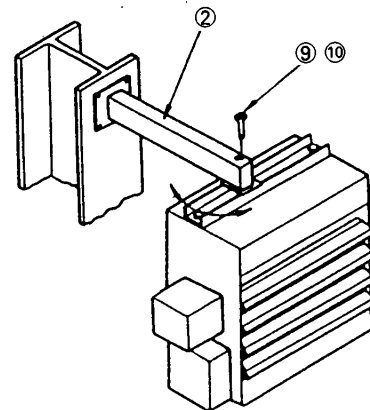
Bolt **attachment assembly** (3) with the threaded hole closest to the control box side of the heater. Use 5/8" (16 mm) UNC x 1-1/4" (32 mm) bolts and lockwashers.



Step 3

Lift heater into place and fasten it to the **arm assembly** (3) using a 5/8" (16 mm) UNC x 4-1/2" (114 mm) bolt. This step will require more than one person due to the weight of the heater. Refer to the heater installation manual for weight.

Heater may be rotated as indicated by arrow.



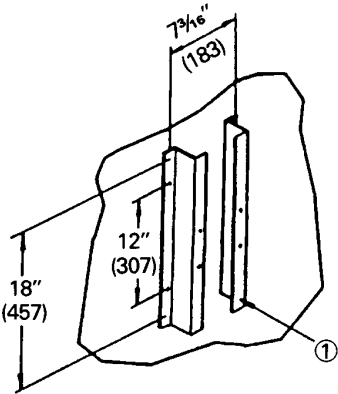
Wall Mounting Kit Installation

Note: Dimensions are in inches (mm).

Step 1

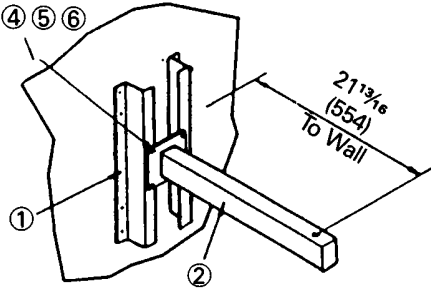
Fasten the Z **Sections** (1) to a wall that will support the heater's weight using the installer supplied fastening method.

Recommended mounted holes



Step 2

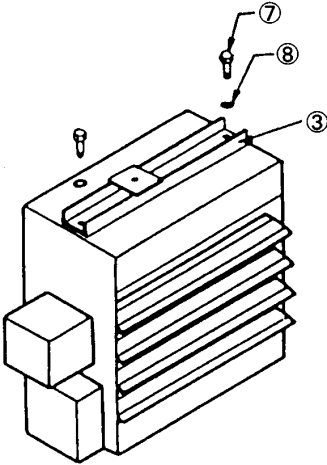
Bolt arm assembly (2) to the Z **Sections** using (1) using 3/8 (9.5 mm) UNC x 1 (25.4 mm) bolts, lockwashers and nuts.



Step 3

Bolt attachment assembly (3) to the heater using 3/8 (9.5 mm) UNC x 1-1/4 (32 mm) bolts and lock washers.

1. UHXA electric heaters use an attachment assembly (3) with an offset threaded hole. The attachment assembly (3) must be placed with the threaded hole closest to the control box side of heater.



Step 4

Lift heater into place and fasten it to the **arm assembly** (2) using a 5/8 (16 mm) UNC x 4-1/2 (114 mm) bolt. This step will require more than one person due to the weight of the heater. Refer to the heater installation manual for weight.

Heater may be rotated as indicated by arrow.

