



Installation

UHXA-IN-10A

Library	Service Literature
Product Section	Air Terminal Devices & Heating Products
Product	Unit Heaters - Electric
Model	UHXA
Literature Type	Installation
Sequence	10A
Date	April 1997
File No.	SV-TD-UH-UHXA-IN-10A-497
Supersedes	UHXA-IN-10-1192

Ceiling Mounting Kit

HLHM

3, 5, 7.5, 10, 15, 20, & 25 KW Units

9732

Since the Trane Company has a policy of continuous product improvement, it reserves the right to change specifications and design without notice. The installation and servicing of equipment referred to in this booklet should be done by qualified, experienced technicians.

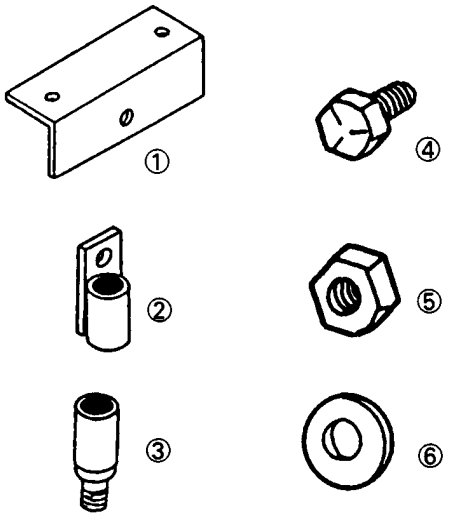
UHXA Ceiling Mounting Kit—HLHM Installation Instructions

⚠ Caution:
Do not install in buildings that are to be transported. Install only when building has reached its final destination to prevent damage to the unit.

Refer to heater installation manual for mounting specifications and conditions.

Installer Required To Supply The Following Items:

- a. Method to fasten angle hangers to supporting structure. The kit has provisions for four (4) 3/8" (9.5 mm) diameter grade 5 bolts. However, any method providing the same or better strength may be used.
- b. Two (2) pieces 1/2" (13 mm) schedule 40 steel pipe or stronger cut to suit installation, and threaded at both ends.



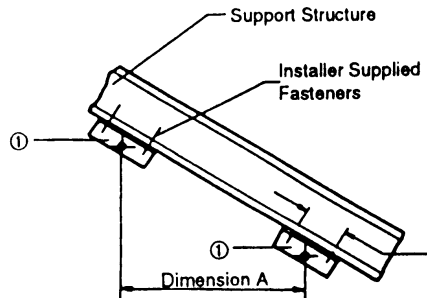
Part Number	Item	Qty.	Description
51668-001	1	2	Angle Hanger
51669-001	2	2	Connector Hanger
43627-001	3	2	Adapt Hanger
43807-001	4	2	1/2" (13mm) UNC X 1-1/4 (32 mm) Grade 5 Bolt
43626-002	5	2	1/2" (13mm) UNC Self-Locking Hex Nut
43625-004	6	2	Washer

UHXA Ceiling Mounting Kit—HLHM Installation Instructions

Installation

Note: Dimensions are in inches (mm).

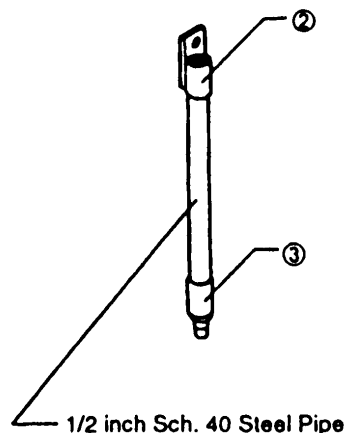
Step 1 —Fasten Angle Hangers (3) to a surface or structure that will support the heater's weight.



DIM. A = Distance between mounting holes.

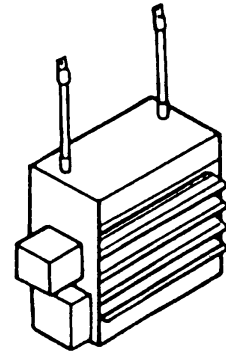
KW	Distance
3, 5, 7.5	13-3/4 (34.9 cm)
10	17-3/4 (45.1 cm)
15, 20, 25	21-3/4 (55.2 cm)

Step 2—Screw on connector hanger (2) and one adaptor hanger (3) onto each of the two steel pipes until tight (minimum of 5 turns each).

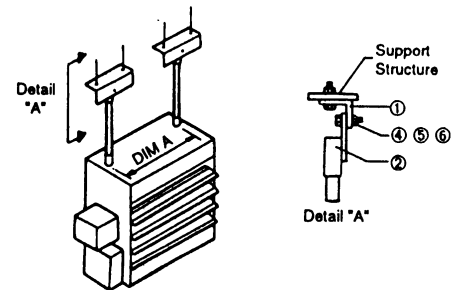


PIPE CUT LENGTH = Distance from Support Structure to top of heater less 4-7/8" (124 mm)

Step 3—Screw hanger assemblies, from Step 2, into 5/8 UNC threaded holes on top of heater cabinet, a minimum of 9 turns.



Step 4—Hang heater from Angle Hangers (1) using the two 1/2 (13 mm) UNC x 11/4 (32 mm) long bolts, and locking nuts.



Notes: Connector (2) must be hung on the inside of Angle (1) as shown. Rotate connector to align with angle. Do not back off more than 3/4 turns.