



TRANE®

Installation

RTAC

Field Installed Sound Attenuator

Order No: **RTAC-SVN01D-EN**

Date: June 2004

Introduction

The purpose of this bulletin is to provide installations instruction for field installed sound attenuators.

"J0" Design Sequence

NOTICE: Warnings and Cautions appear at appropriate sections throughout this manual. Read these carefully.

⚠ WARNING – Indicates a potentially hazardous situation which, if not avoided, could result in death or serious injury.

⚠ CAUTION – Indicates a potentially hazardous situation which, if not avoided, may result in minor or moderate injury. It may also be used to alert against unsafe practices.

CAUTION – Indicates a situation that may result in equipment or property-damage-only accidents.

⚠ WARNING

Hazardous Voltage!

Disconnect all electric power, including remote disconnects before servicing. Follow proper lockout/tagout procedures to ensure the power can not be inadvertently energized. Failure to disconnect power before servicing could result in death or serious injury.



Instructions

Suction Pipe Wrap (Reference drawings 5201-0522 - 5201-0524 and 5712-0305-5712-0010 and 5712-0377)

1. Install compressor 1A pipe wraps starting at service valve end.
2. Install compressor 1A stretch loops around each pipe wrap butt joint.
3. Repeat sequence for remaining suction lines.

Discharge Pipe Wrap (Reference drawings 5201-0522 - 5201-0532)

4. Install circuit 1 discharge wraps starting at compressor end, working toward oil separator.
5. Install circuit 1 stretch loops around each pipe wrap butt joint.
6. Repeat sequence for circuit 2.

Compressor Attenuator Base Frame (Reference drawings 5201-0516 - 5201-0521)

7. Install all of compressor 1A short, end and middle rails. Leave mounting screws loose.
8. Install compressor 1A long, side rails. Leave mounting screws loose.
9. Tighten all screws.
10. Install sheet metal part 5709-4999.
11. Repeat sequence for remaining compressors.

Compressor Attenuator Pads (Reference drawings 5201-0516 - 5201-0522)

12. Install compressor 1A bottom (center and discharge side) pads.
13. Measure and cut out power wire conduit hole for bottom, suction side pad.
14. Install compressor 1A suction side bottom pad.
15. Install compressor 1A suction end pad.
16. Install compressor 1A discharge end pad.
17. Install compressor 1A inside (closest to evaporator), side pad.
18. Install compressor 1A outside, side pad.
19. Install aluminum tape along the length of the 4 side seams.
20. Install compressor 1A top (lid) pad.
21. Install aluminum tape along the length of the top pad seams.
22. Install compressor 1A raincoat.
23. Repeat sequence for remaining compressors



Part Number	Discription
ATT00206	140 Standard and High Efficiency - 50 and 60 Hz Units 155 Standard Efficiency - 50 and 60 Hz Units 170 Standard Efficiency - 50 and 60 Hz Units
ATT00207	155 High Efficiency - 50 and 60 Hz Units 170 High Efficiency - 50 and 60 Hz Units
ATT00208	185 Standard Efficiency - 50 and 60 Hz Units
ATT00209	185 High Efficiency - 50 and 60 Hz Units
ATT00210	200 Standard Efficiency - 50 and 60 Hz Units
ATT00211	200 High Efficiency - 50 and 60 Hz Units 225 Standard - 60 Hz Units 250 Standard - 60 Hz Units
ATT00215	225 High Efficiency - 60 Hz Units 250 High Efficiency - 60 Hz Units
ATT00216	250 Standard Efficiency - 50 Hz Units 275 High Efficiency - 50 and 60 Hz Units
ATT00217	300 Standard and High Efficiency - 50 and 60 Hz Units
ATT00218	350 High Efficiency - 50 and 60 Hz Units 350 Standard Efficiency - 50 Hz Units
ATT00219	350 Standard Efficiency - 60 Hz Units
ATT00220	375 Standard and High Efficiency - 50 Hz Units
ATT00221	400 Standard and High Efficiency - 50 and 60 Hz Units 450 Standard and High Efficiency - 50 and 60 Hz Units 500 Standard Efficiency - 60 Hz Units

UNLESS OTHERWISE SPECIFIED ALL DIMENSIONS ARE IN INCHES. TOLERANCE:

.X = ±
.XX = ±
.XXX = ±

ANGLES = ± ° HOLE DIA = +
CONFORMS TO ASME Y14.5M-1994.

FINISH ✓

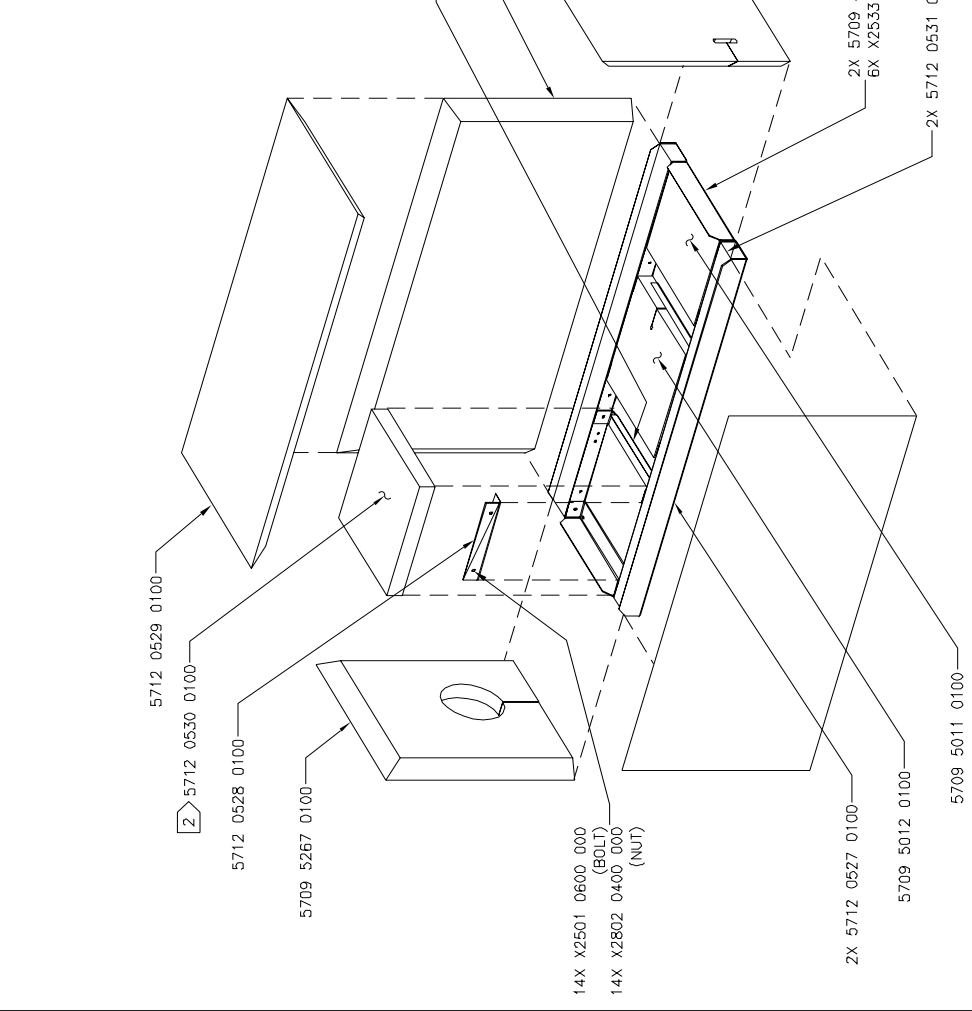
TRANE
A. TRANE
ASME Y14.5M-1994
THIS DRAWING IS THE PROPERTY OF TRANE. IT IS TO BE USED ONLY FOR THE PROJECT AND FOR THE QUANTITY OF PARTS SPECIFIED THEREIN.
DRAWN BY: C. MEYERS DATE: 06/20/03
THIS IS A PRELIMINARY DRAWING.
DO NOT SCALE PRINT
TRANE MAKE PRODUCTION
SIMILAR TO: 5709-5277

NOTE:
1. APPLY TAPE (X4513 0260 010) TO ALL MITRED CORNERS, PRIOR TO ASSEMBLING RAIN COVER (5709 7202 0100)
2. CONDUIT OPENING(S) TO BE CUT TO FIT DURING ASSEMBLY
3. TO BE USED ON COMPRESSORS, AS SPECIFIED BY CHART.

5712-0524 SHEET 1 OF 1
REV A

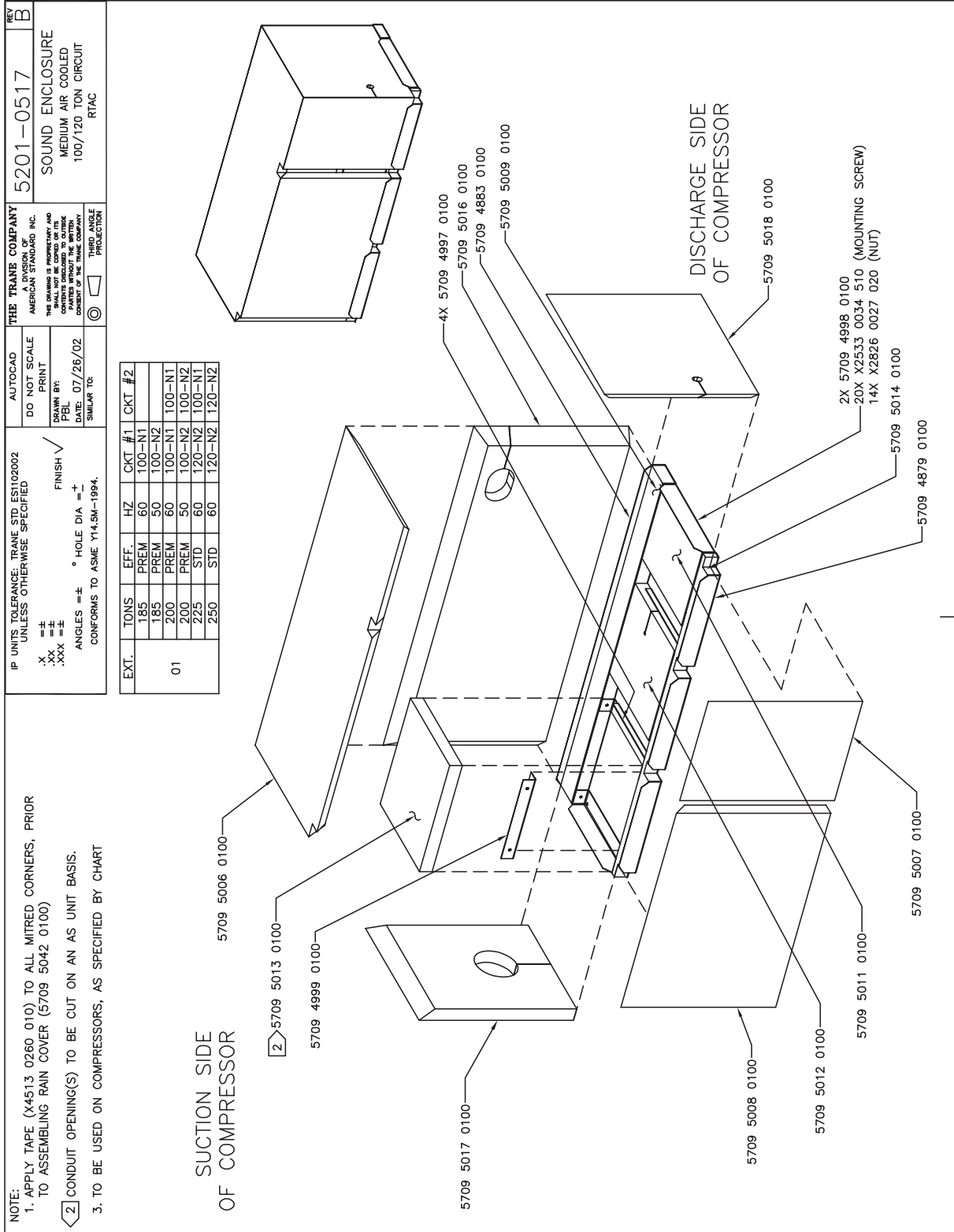
SOUND ENCLOSURE
LARGE AIR COOLED
70/85 & 100/120 TON CIRCUITS
RTAC

EXT.	UNIT	HZ	CKT #1	CKT #2
01	225 HIGH	60	1A	2A
	250 STD/HIGH	50	1B	2A
	250 HIGH	60	1A	2A
	275 STD/HIGH	50/60	1B	
	300 STD/HIGH	50/60	1B	
	350 STD	60	1B	
	350 STD	50	1B	2B
	350 HIGH	50/60	1B	2B
	375 STD/HIGH	50	1B	2B
	400 STD/HIGH	50/60	1B	2B
450 STD/HIGH	60	1B	2B	
500 STD	60	1B	2B	



A B C D

1 2 3 4



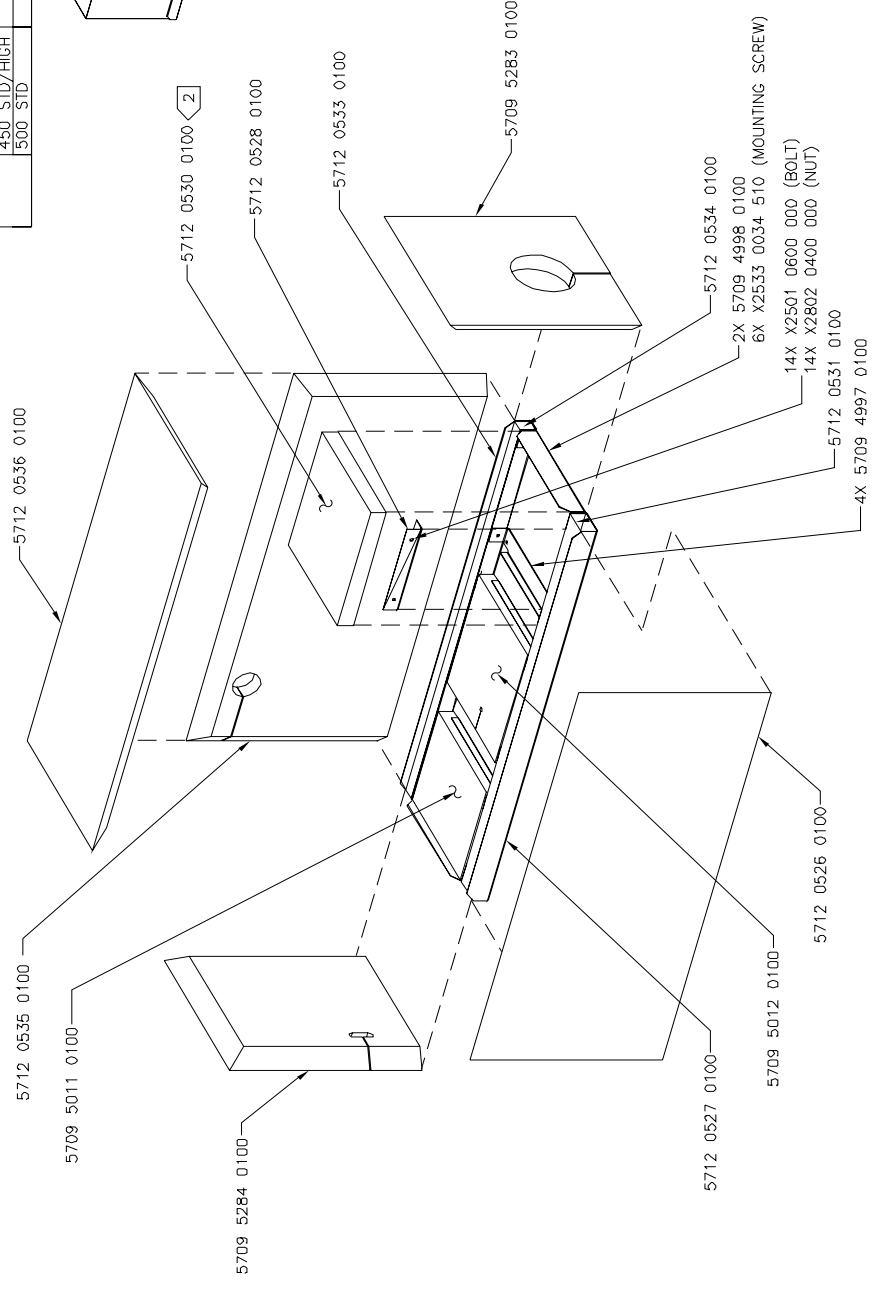
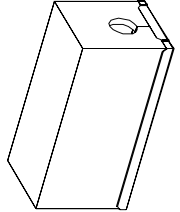
5712-0525 SHEET 1 OF 1
 SOUND ENCLOSURE
 LARGE AIR COOLED
 70/85 & 100/120 TON CIRCUITS
 RTAC

TRANE
 APPROVED BY THE COMPANY
 THE DRAWING IS SUBJECT TO ANY CHANGES THAT MAY BE MADE WITHOUT THE WRITTEN
 CONSENT OF TRANE. THIS DRAWING IS NOT TO BE USED FOR ANY OTHER PURPOSE.
 DRAWN BY: C. MEYERS @ DATE: 06/20/03
 THIRD ANGLE
 PROJECTION

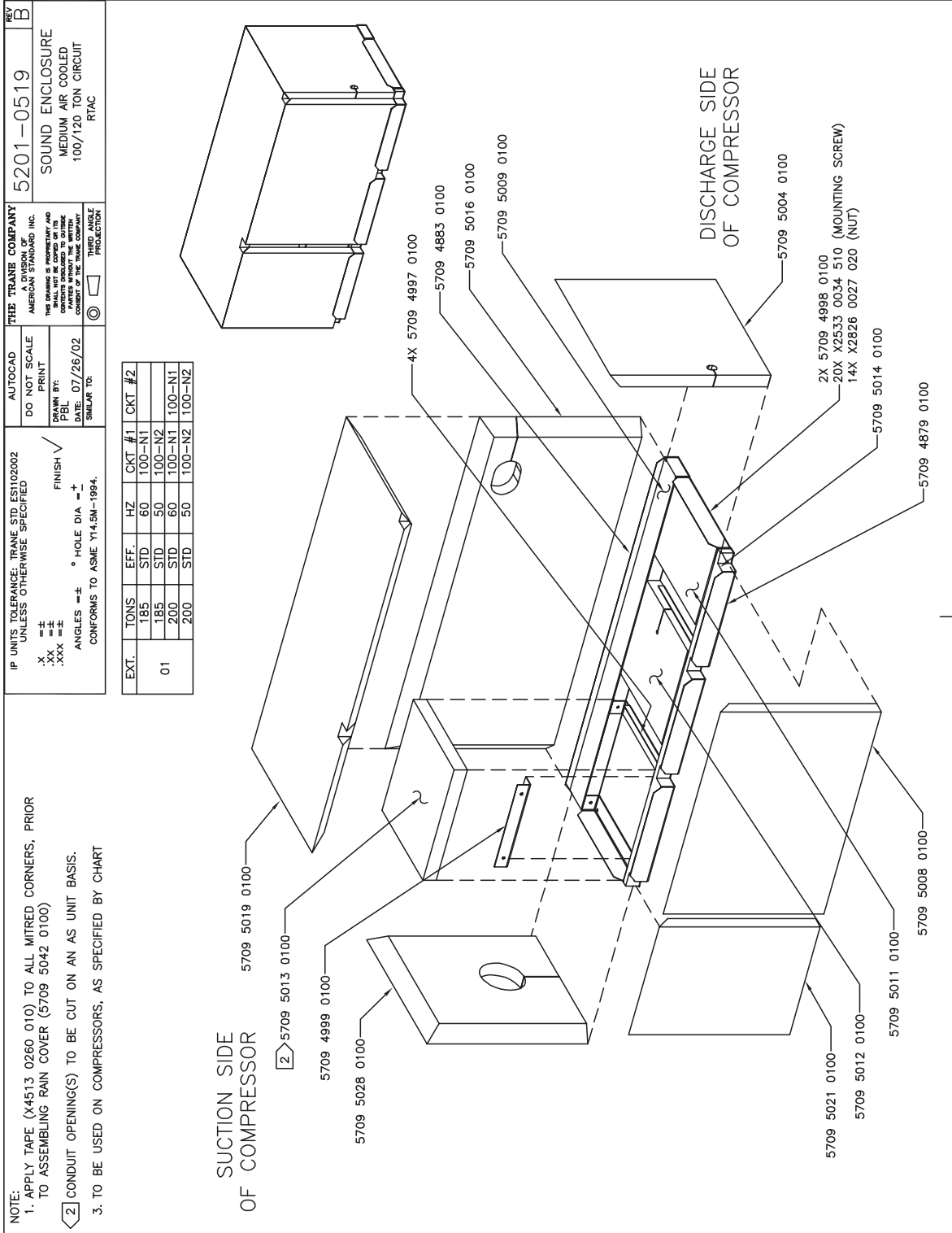
UNLESS OTHERWISE SPECIFIED ALL DIMENSIONS ARE
 IN INCHES. TOLERANCE:
 .X = ±
 .XX = ±
 .XXX = ±
 ANGLES = ± ° HOLE DIA = +
 CONFORMS TO ASME Y14.5M-1994.

NOTES:
 1. APPLY TAPE (X4513 0260 010) TO ALL MITRED CORNERS, PRIOR
 TO ASSEMBLING RAIN COVER (5709 7203 0100).
 2. CONDUIT OPENING(S) TO BE CUT TO FIT DURING ASSEMBLY.
 3. TO BE USED ON COMPRESSORS, AS SPECIFIED BY CHART.

EXT.	UNIT	HZ	CKT #1	CKT #2
01	250 STD/HIGH	50	1A	2A
	275 STD/HIGH	50/60		
	300 STD/HIGH	50/60		
	350 STD/HIGH	50/60	1A	2A
	375 STD/HIGH	50		
	400 STD/HIGH	50/60		
450 STD/HIGH	60	1A	2A	
500 STD	60			



A B C D 1 2 3 4

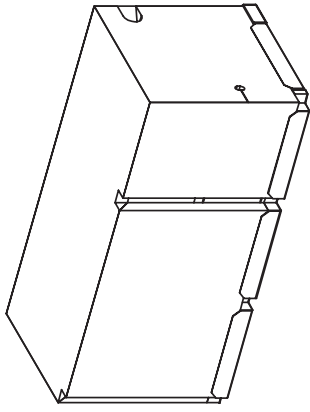


IP UNITS TOLERANCE: TRANE STD EST102002 UNLESS OTHERWISE SPECIFIED X = ± .XX = ±± .XXX = ±±± ANGLES = ± ° HOLE DIA = ± CONFORMS TO ASME Y14.5M-1994.		AUTOCAD DO NOT SCALE PRINT DRAWN BY: DATE: 07/26/02 SIMILAR TO:	THE TRANE COMPANY A DIVISION OF AMERICAN STANDARD INC. THIS DRAWING IS PROPRIETARY AND ALL RIGHTS ARE RESERVED. NO PARTS OR CONTENTS TO BE REPRODUCED OR TRANSMITTED IN ANY FORM OR BY ANY MEANS, WITHOUT THE WRITTEN CONSENT OF THE TRANE COMPANY.	REV B 5201-0520 SOUND ENCLOSURE MEDIUM AIR COOLED 70/85 TON CIRCUIT RTAC
--	--	--	---	--

NOTE:

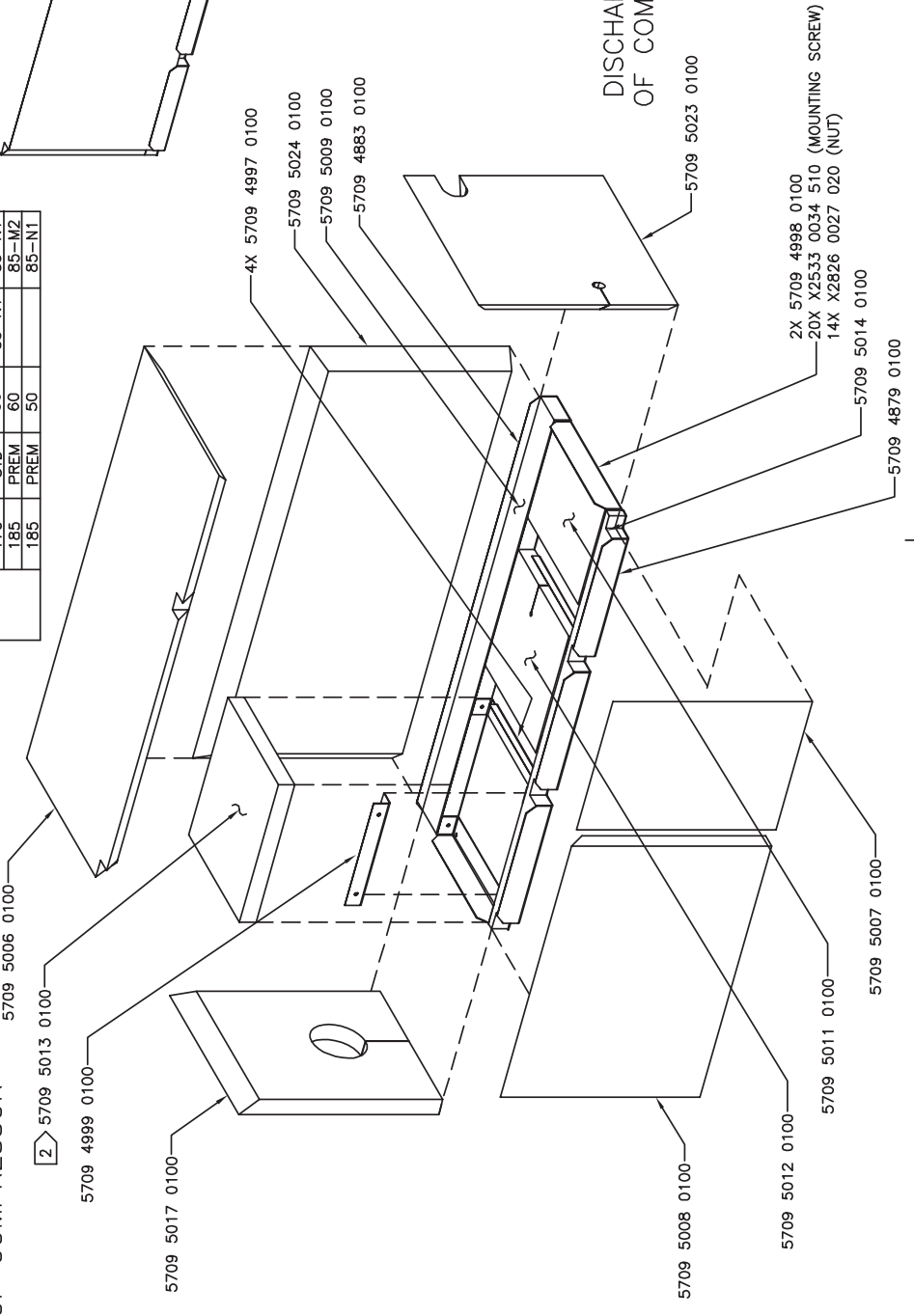
- APPLY TAPE (X4513 0260 010) TO ALL MITRED CORNERS, PRIOR TO ASSEMBLING RAIN COVER (5709 5043 0100)
- CONDUIT OPENING(S) TO BE CUT ON AN AS UNIT BASIS.
- TO BE USED ON COMPRESSORS, AS SPECIFIED BY CHART

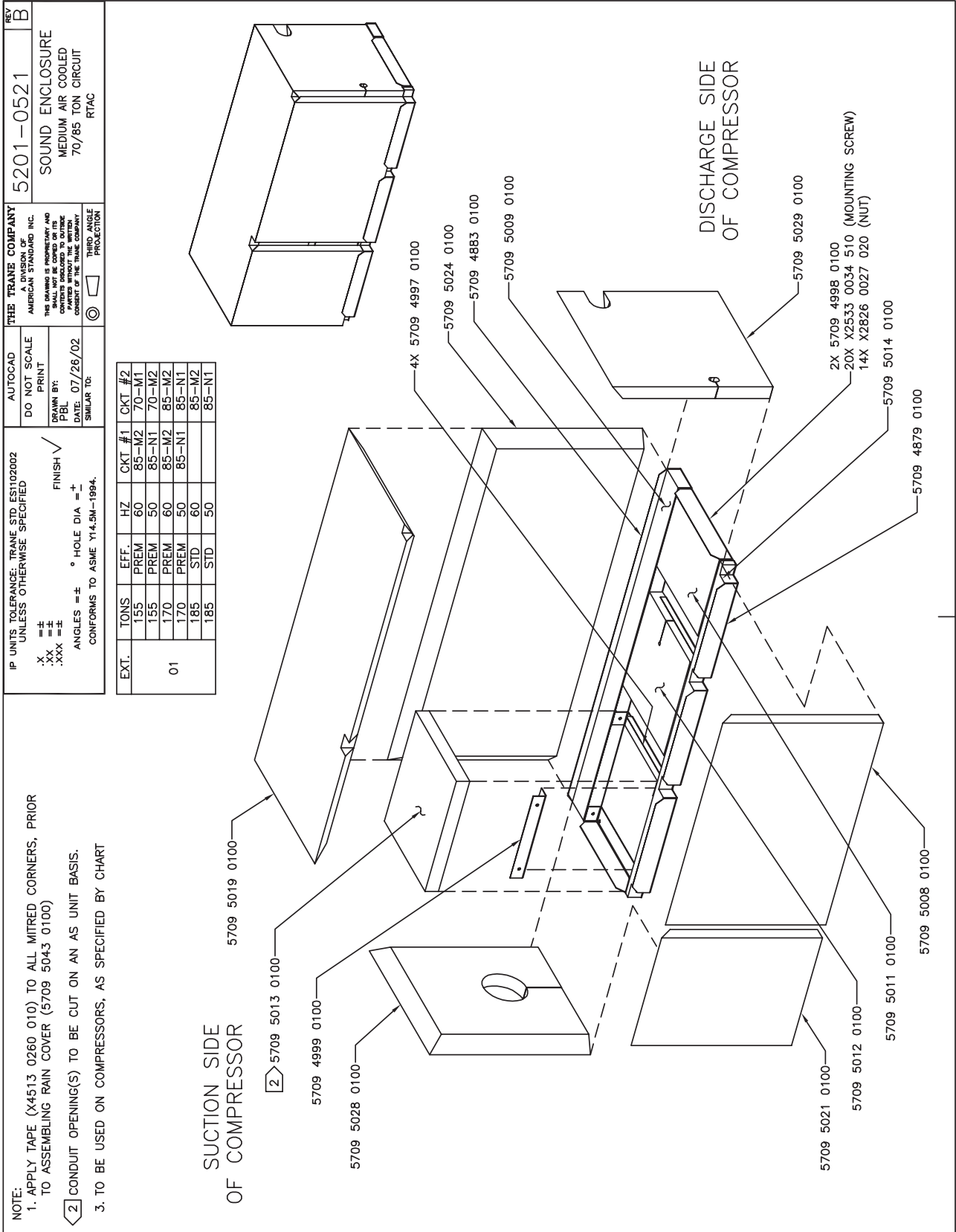
EXT.	TONS	EFF.	HZ	CKT #1	CKT #2
01	140	STD	60	70-M1	70-M1
	140	STD	50	70-M2	70-M2
	140	PREM	60	70-M1	70-M1
	140	PREM	50	70-M2	70-M2
	155	STD	60	85-M2	70-M1
	155	STD	50	85-N1	70-M2
	170	STD	60	85-M2	85-M2
	170	STD	50	85-N1	85-N1
	185	PREM	60	85-M2	85-M2
	185	PREM	50	85-N1	85-N1



SUCTION SIDE OF COMPRESSOR

DISCHARGE SIDE OF COMPRESSOR



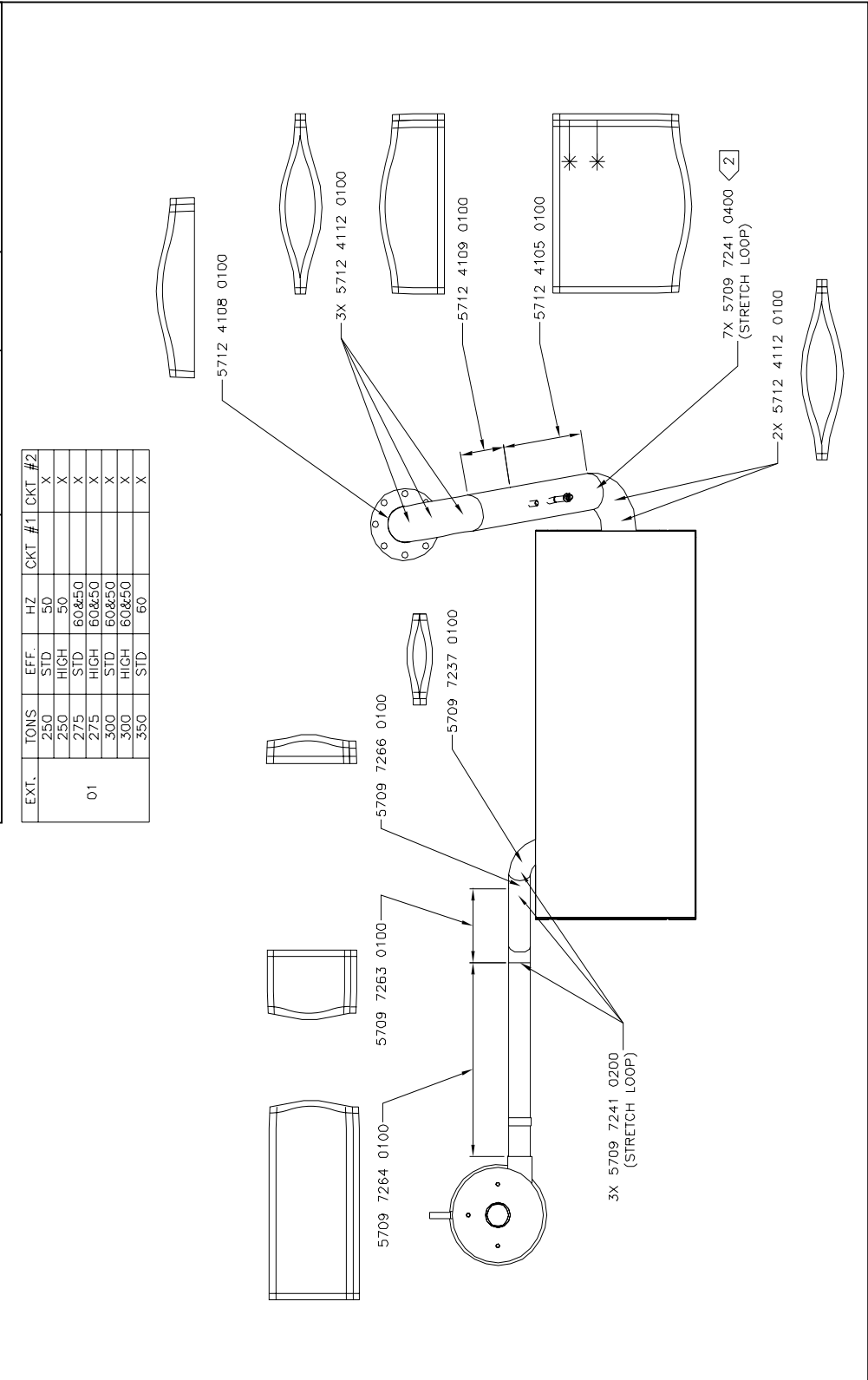


5712-4085
 PIPE WRAP ASSY
 LARGE AIR COOLED
 RTAC

TRANE
 ALL RIGHTS RESERVED
 THIS DRAWING IS PROPRIETARY AND SHALL NOT BE COPIED OR ITS
 CONTENTS DISCLOSED WITHOUT THE WRITTEN CONSENT OF TRANE
 DRAWN BY: CMYERS © DATE: 11/24/03
 DO NOT SCALE PRINT
 THIRD ANGLE
 PROJECTION
 SIMILAR TO: 5709-7281

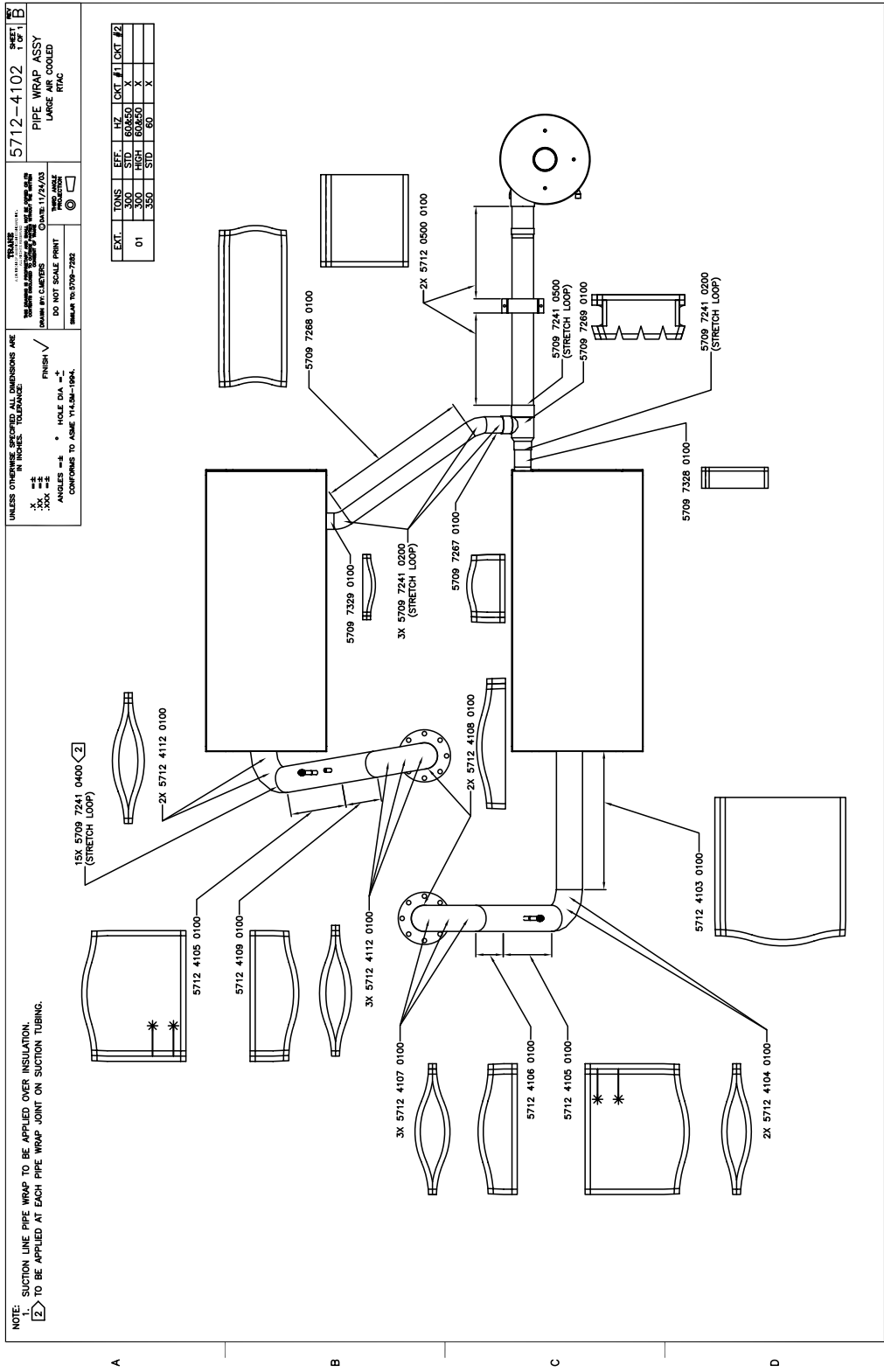
UNLESS OTHERWISE SPECIFIED ALL DIMENSIONS ARE
 IN INCHES. TOLERANCE:
 .X = ±
 .XX = ±
 .XXX = ±
 ANGLES = ± ° HOLE DIA = ±
 CONFORMS TO ASME Y14.5M-1994.
 FINISH ✓
 HOLE DIA = ±

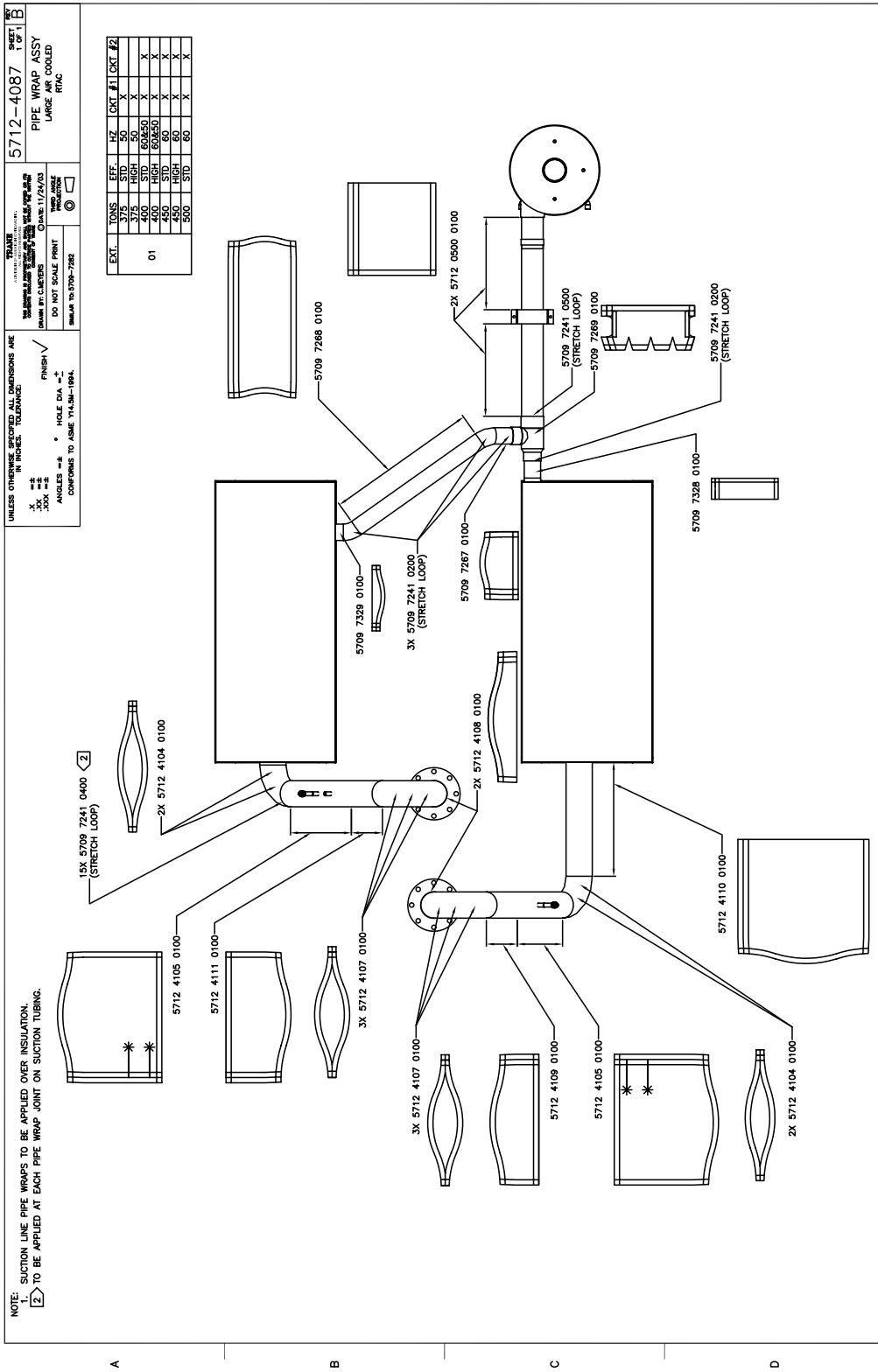
NOTE:
 1. SUCTION LINE PIPE WRAPS TO BE APPLIED OVER INSULATION.
 2. TO BE APPLIED AT EACH PIPE WRAP JOINT ON SUCTION TUBING.

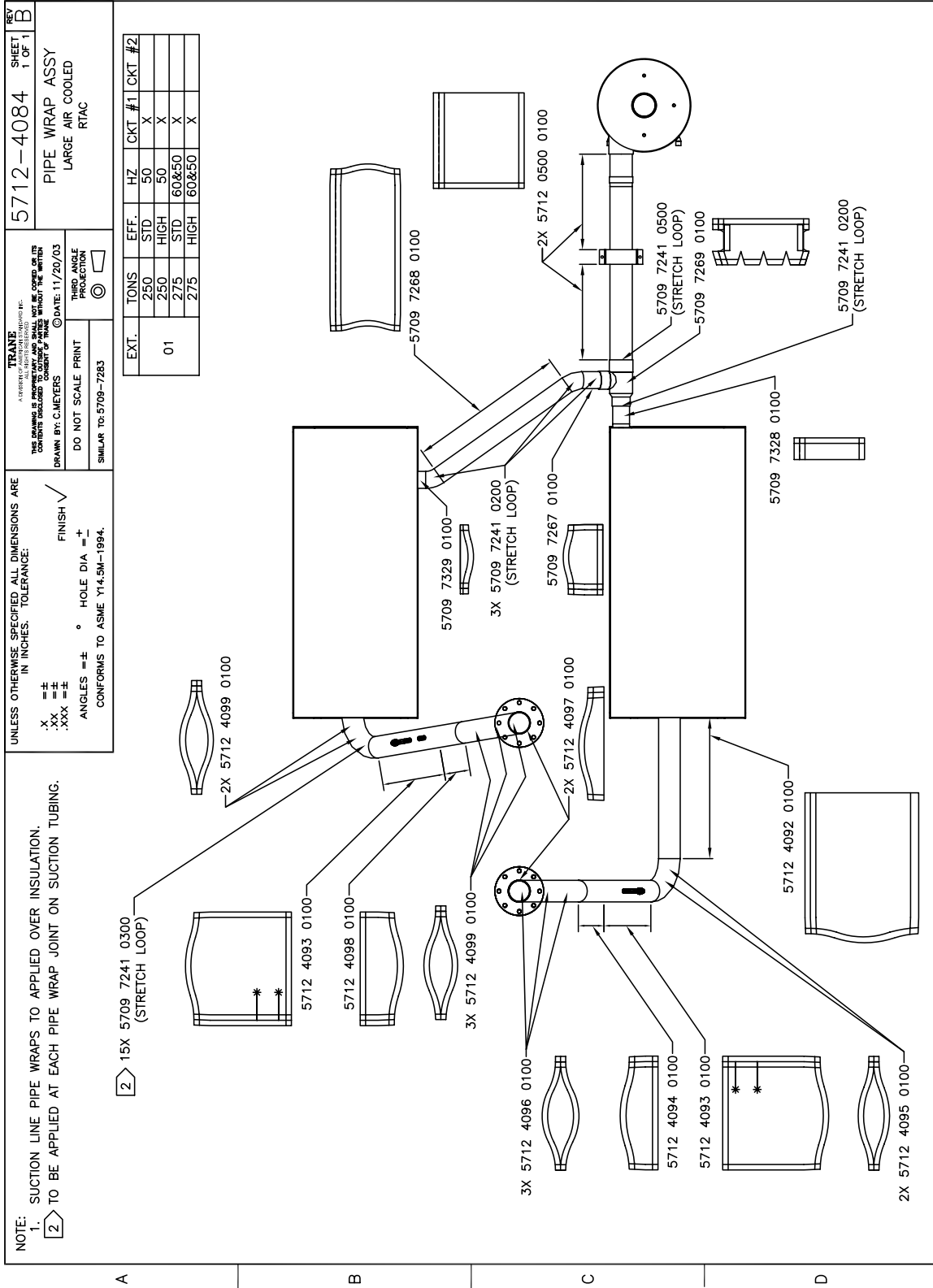


EXT.	TONS	EFF.	HZ	CKT #1	CKT #2
01	250	STD	50		X
	250	HIGH	50		X
	275	STD	60&50		X
	275	HIGH	60&50		X
	300	STD	60&50		X
	300	HIGH	60&50		X
	350	STD	60		X
	350	HIGH	60		X

1 2 3 4







UNLESS OTHERWISE SPECIFIED ALL DIMENSIONS ARE IN INCHES. TOLERANCE:

X .XX = ± .005
 .XX = ± .010
 .XXX = ± .015

ANGLES = ±

HOLE DIA = +

FINISH ✓

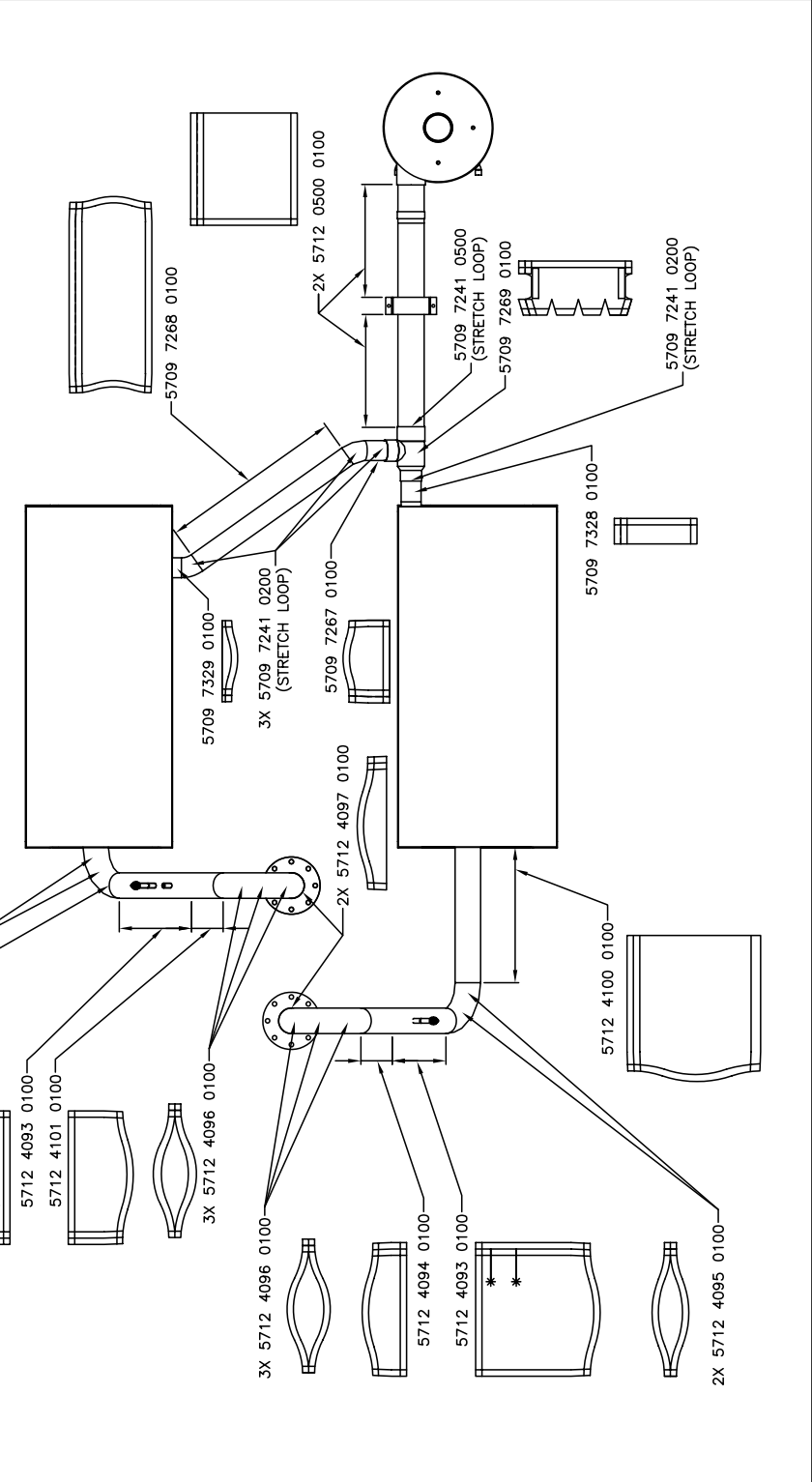
DO NOT SCALE PRINT

TRANE
 A TRANE COMPANY
 THE DESIGN IS PROTECTED BY PATENT RIGHTS. ALL RIGHTS RESERVED.
 THIS DRAWING IS FOR THE EXCLUSIVE USE OF THE CUSTOMER. IT IS NOT TO BE REPRODUCED OR TRANSMITTED IN ANY FORM OR BY ANY MEANS WITHOUT THE WRITTEN CONSENT OF TRANE. DRAWN BY: C.MEYERS DATE: 11/20/03

TRANE
 A TRANE COMPANY
 THE DESIGN IS PROTECTED BY PATENT RIGHTS. ALL RIGHTS RESERVED.
 THIS DRAWING IS FOR THE EXCLUSIVE USE OF THE CUSTOMER. IT IS NOT TO BE REPRODUCED OR TRANSMITTED IN ANY FORM OR BY ANY MEANS WITHOUT THE WRITTEN CONSENT OF TRANE. DRAWN BY: C.MEYERS DATE: 11/20/03

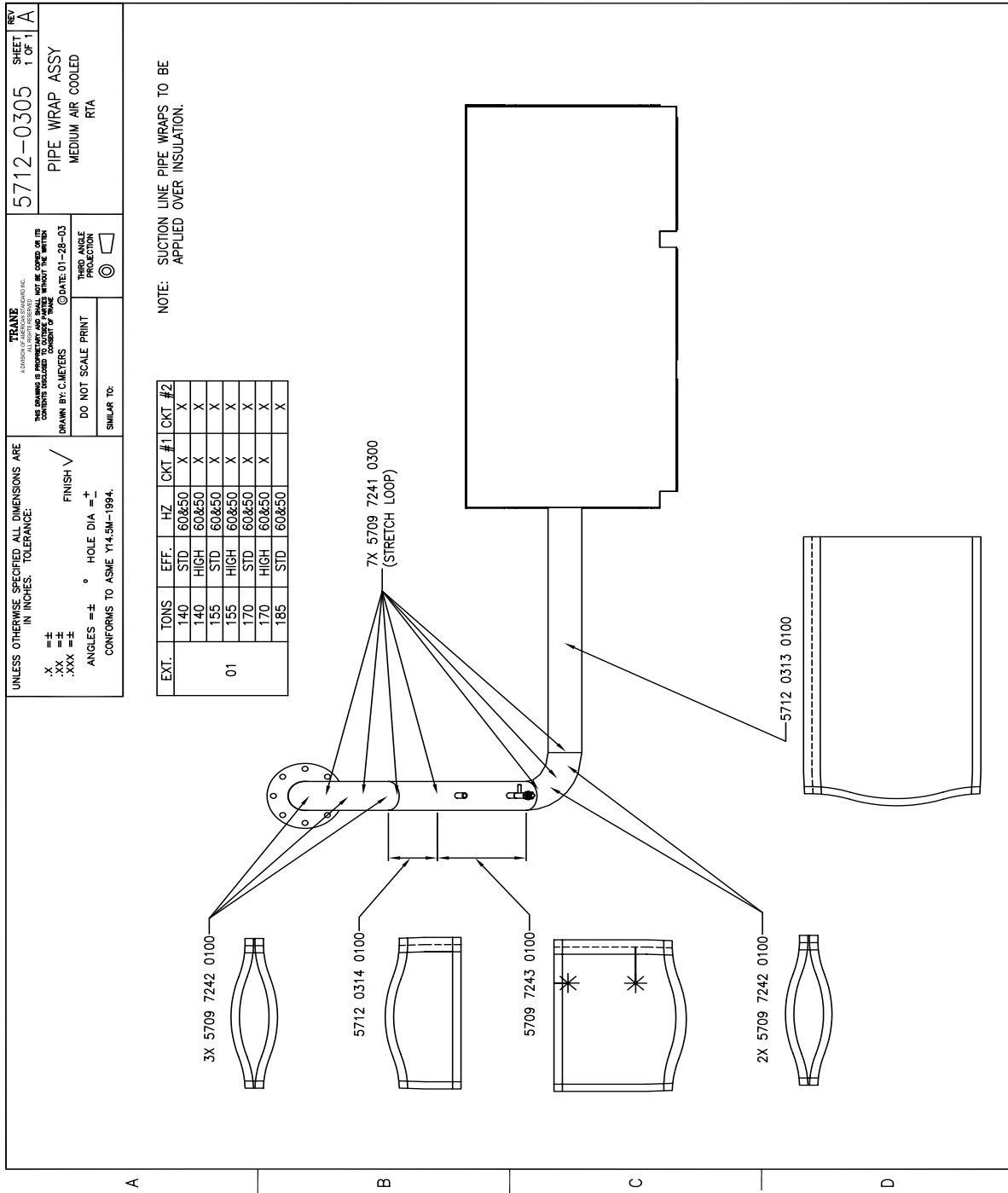
TRANE
 A TRANE COMPANY
 THE DESIGN IS PROTECTED BY PATENT RIGHTS. ALL RIGHTS RESERVED.
 THIS DRAWING IS FOR THE EXCLUSIVE USE OF THE CUSTOMER. IT IS NOT TO BE REPRODUCED OR TRANSMITTED IN ANY FORM OR BY ANY MEANS WITHOUT THE WRITTEN CONSENT OF TRANE. DRAWN BY: C.MEYERS DATE: 11/20/03

EXT.	TONS	EFF.	HZ	CKT #1	CKT #2
01	350	STD	50	X	X
	350	HIGH	60&50	X	X
	375	STD	50	X	X
	375	HIGH	50	X	X



NOTE:

1. SUCTION LINE PIPE WRAPS TO APPLIED OVER INSULATION.
 2. TO BE APPLIED AT EACH PIPE WRAP JOINT ON SUCTION TUBING.



UNLESS OTHERWISE SPECIFIED ALL DIMENSIONS ARE IN INCHES. TOLERANCE:

.X = ±
.XX = ±
.XXX = ±

ANGLES = ± ° HOLE DIA = ±
CONFORMS TO ASME Y14.5M-1994.

FINISH ✓

DO NOT SCALE PRINT

THIRD ANGLE PROJECTION

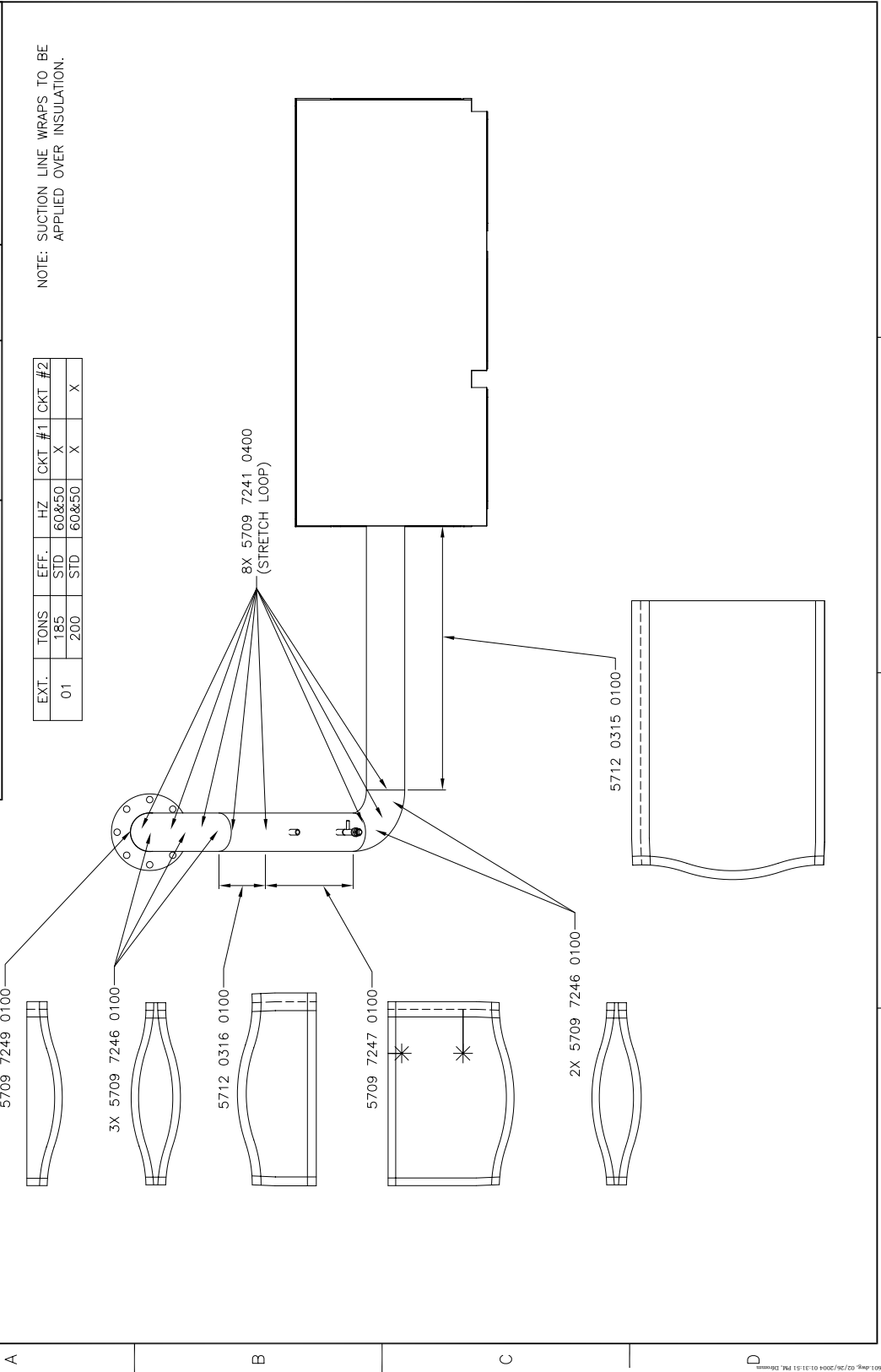
TRANE
A DIVISION OF AMERICAN OVERSEAS INC.
THIS DRAWING IS PROPRIETARY AND SHALL NOT BE COPIED OR ITS CONTENTS DISCLOSED TO ANY OTHER PARTY WITHOUT THE WRITTEN CONSENT OF TRANE
DRAWN BY: C.MEYERS © DATE: 01-27-03

5712-0306 SHEET 1 OF 1 REV B

PIPE WRAP ASSY
MEDIUM AIR COOLED
RTA

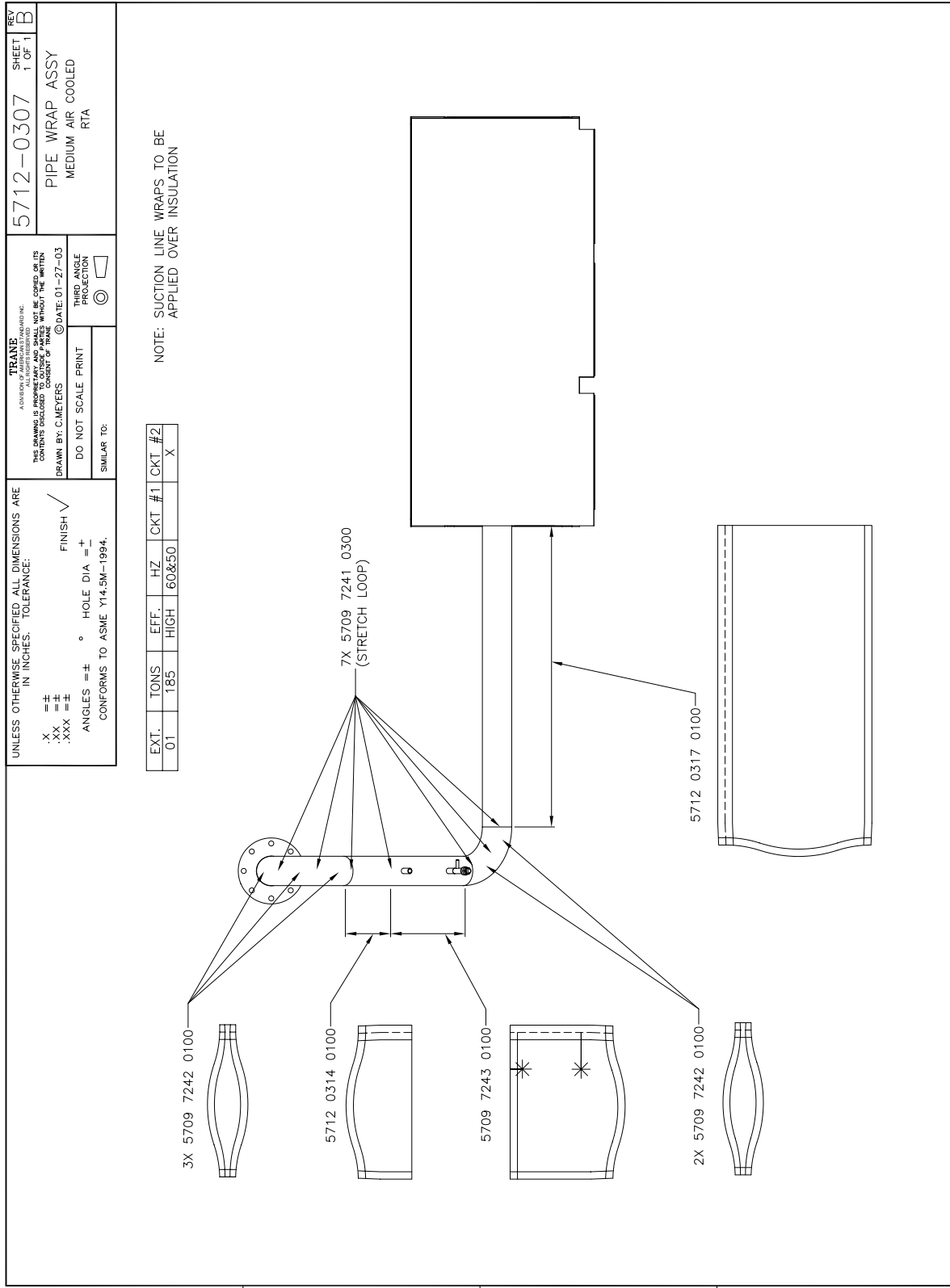
EXT.	TONS	EFF.	HZ	CKT #1	CKT #2
01	185	STD	60&50	X	X
	200	STD	60&50	X	X

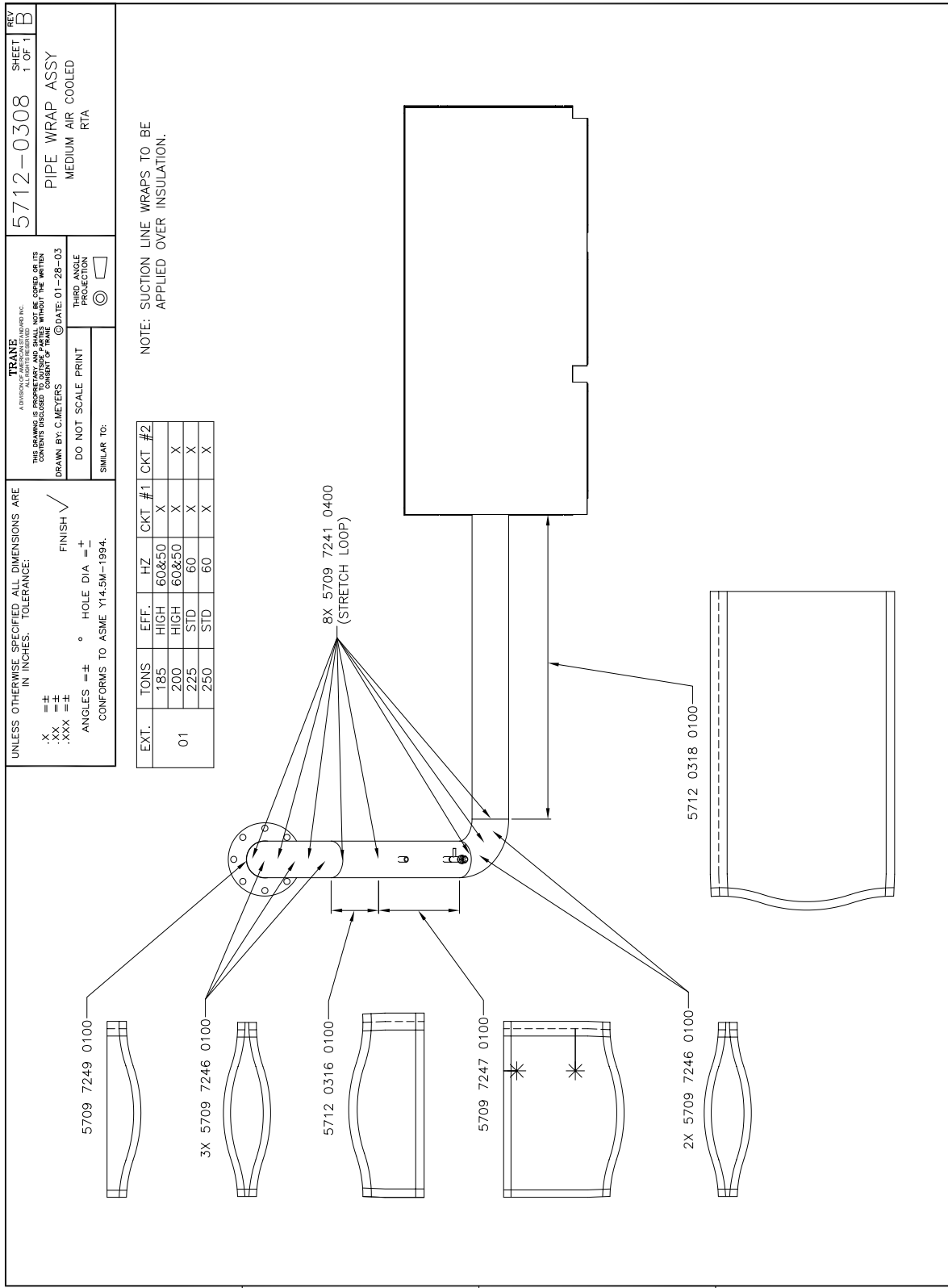
NOTE: SUCTION LINE WRAPS TO BE APPLIED OVER INSULATION.

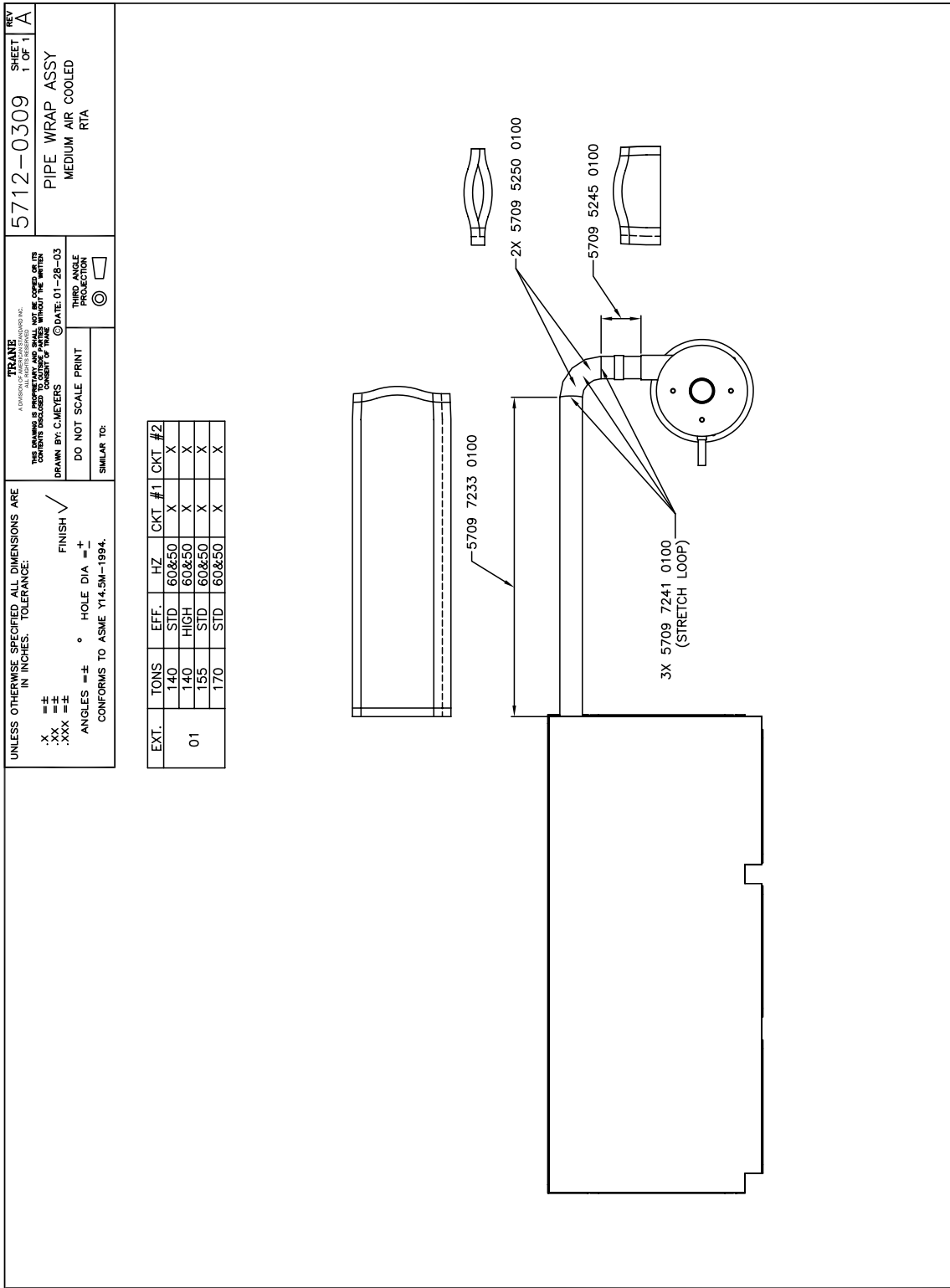


1 2 3 4

1:171030901.dwg: 02/26/2004 01:13:13 P.M. D:\...







UNLESS OTHERWISE SPECIFIED ALL DIMENSIONS ARE IN INCHES. TOLERANCE:

.X = ±
.XX = ±
.XXX = ±

FINISH ✓

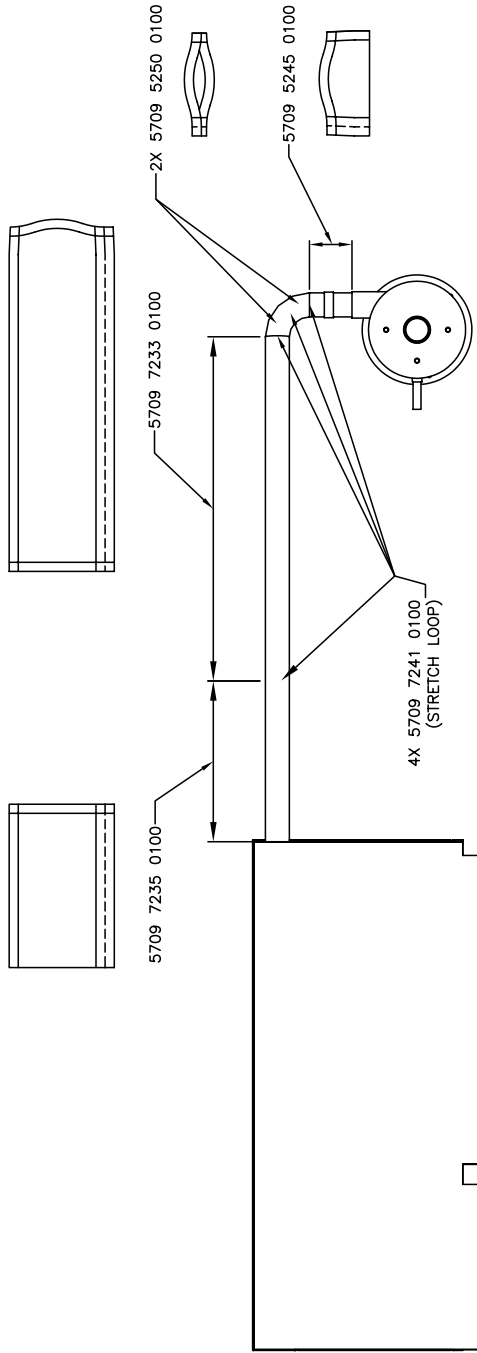
ANGLES = ± ° HOLE DIA = ±

CONFORMS TO ASME Y14.5M-1994.

TRANE
A DIVISION OF INTRACORPORATION, INC.
ALL RIGHTS RESERVED
THIS DRAWING IS PROPERTY OF TRANE. IT IS NOT TO BE COPIED OR ITS CONTENTS DISCLOSED TO ANY OTHER PARTY WITHOUT THE WRITTEN CONSENT OF TRANE.
DRAWN BY: C.METERS © DATE: 01-28-03
DO NOT SCALE PRINT
THIRD ANGLE PROJECTION

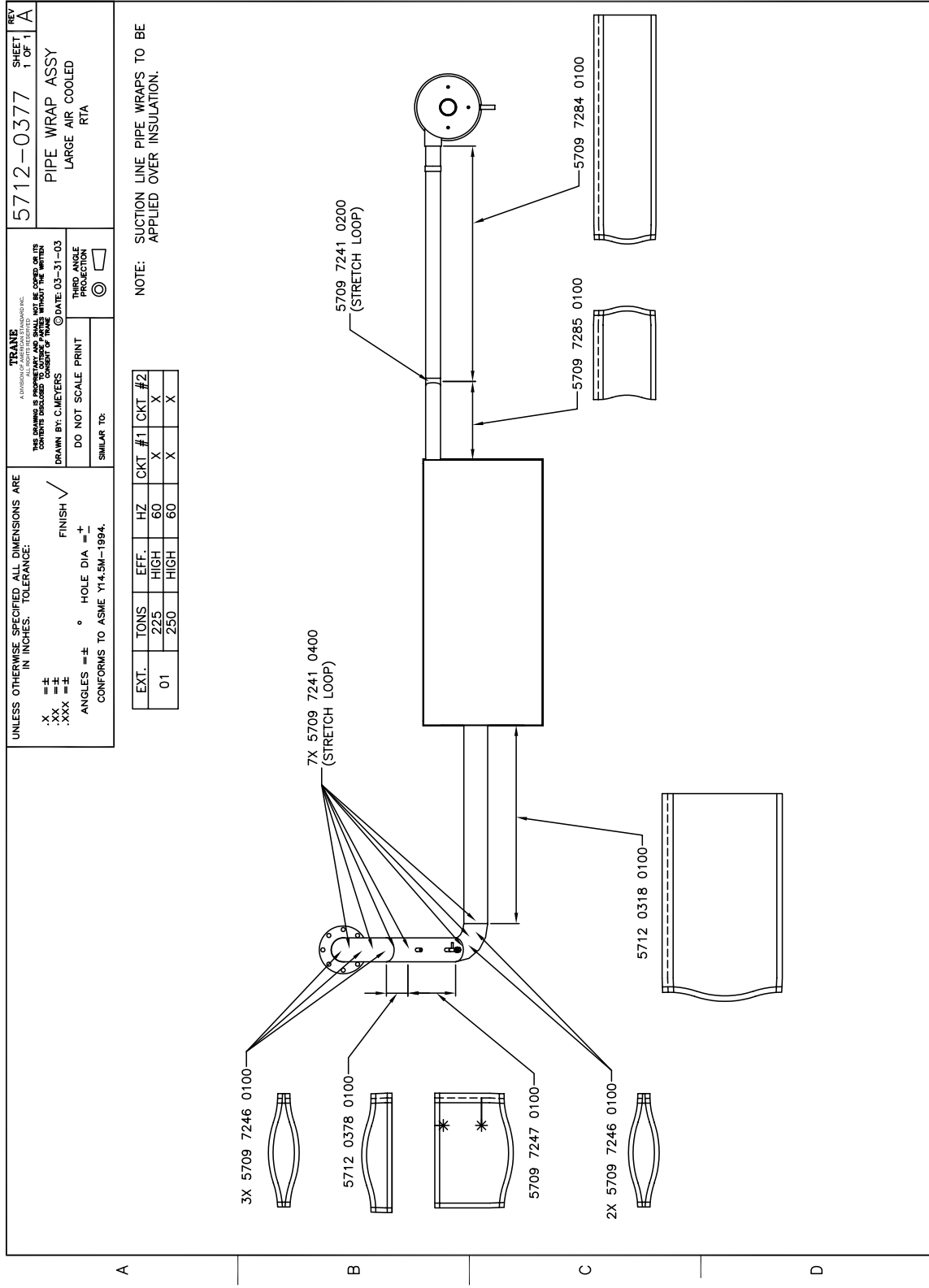
5712-0310 SHEET 1 OF 1
PIPE WRAP ASSY
MEDIUM AIR COOLED
RTA

EXT.	TONS	EFF.	HZ	CKT #1	CKT #2
01	155	HIGH	60&50	X	X
	170	HIGH	60&50	X	X
	185	STD	60&50	X	X



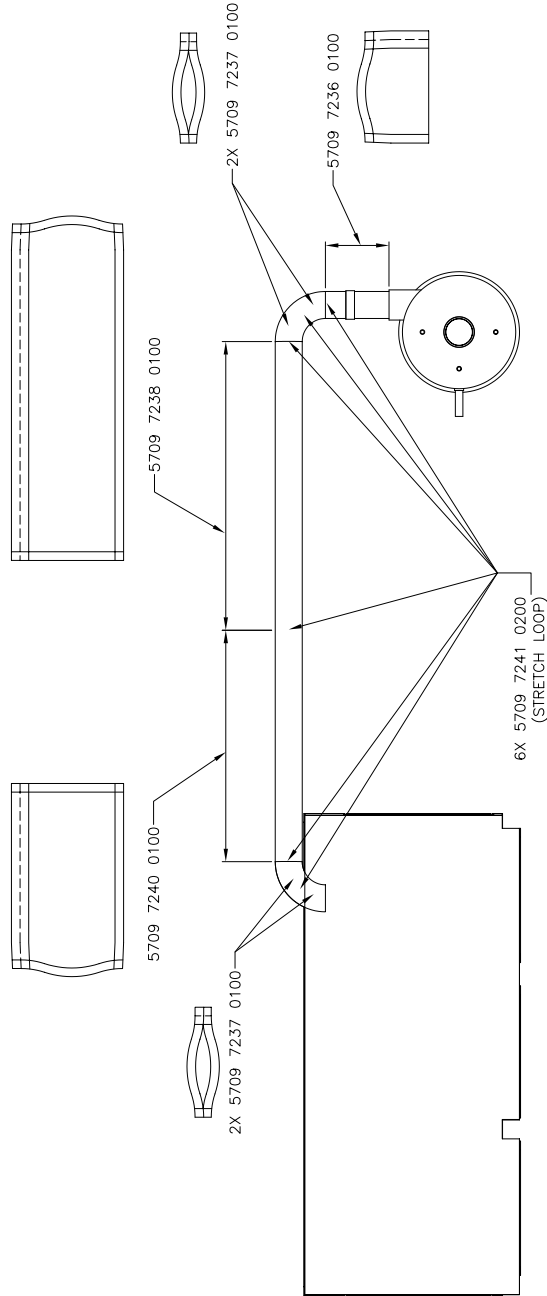
1 2 3 4

A B C D



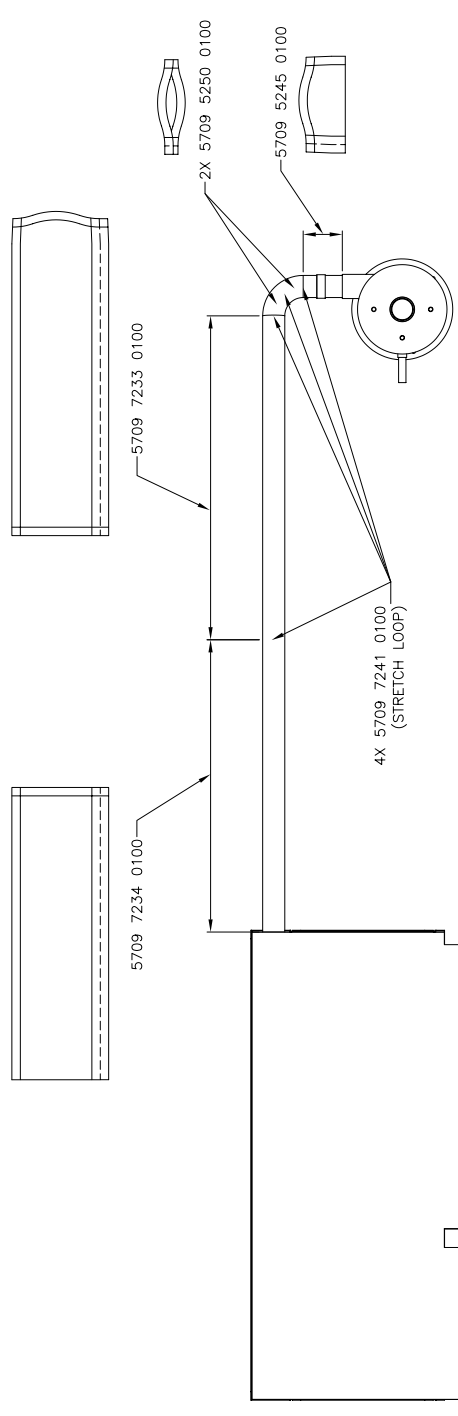
<p>UNLESS OTHERWISE SPECIFIED ALL DIMENSIONS ARE IN INCHES. TOLERANCE:</p> <p>.X = ± .XX = ± .XXX = ±</p> <p>ANGLES = ± ° HOLE DIA = ±</p> <p>CONFORMS TO ASME Y14.5M-1994.</p> <p style="text-align: right;">FINISH ✓</p>	<p>TRANE ALL RIGHTS RESERVED</p> <p>THIS DRAWING IS PROPERTY OF TRANE. IT IS NOT TO BE COPIED OR ITS CONTENTS DISCLOSED TO ANY OTHER PARTY WITHOUT THE WRITTEN CONSENT OF TRANE.</p> <p>DRAWN BY: D.FROMM © DATE: 02-26-04</p> <p>DO NOT SCALE PRINT</p> <p>SIMILAR TO: </p>
<p>5712-0495</p> <p>PIPE WRAP ASSY MEDIUM AIR COOLED (DISCHARGE) RTA</p>	<p>SHEET 1 OF 1 REV A</p>

EXT.	TONS	EFF.	HZ	CKT #1	CKT #2
01	185	STD	60&50	X	X
	200	STD	60&50	X	X



<p>UNLESS OTHERWISE SPECIFIED ALL DIMENSIONS ARE IN INCHES. TOLERANCE:</p> <p> \pm .001 \pm .002 \pm .003 \pm .004 \pm .005 \pm .006 \pm .007 \pm .008 \pm .009 \pm .010 \pm .015 \pm .020 \pm .030 \pm .040 \pm .050 \pm .060 \pm .070 \pm .080 \pm .090 \pm .100 \pm .125 \pm .150 \pm .1875 \pm .250 \pm .3125 \pm .375 \pm .500 \pm .625 \pm .750 \pm .875 \pm 1.000 \pm 1.250 \pm 1.500 \pm 1.875 \pm 2.000 \pm 2.500 \pm 3.000 \pm 3.750 \pm 4.500 \pm 5.000 \pm 6.000 \pm 7.500 \pm 9.000 \pm 10.000 \pm 12.000 \pm 15.000 \pm 18.000 \pm 20.000 \pm 24.000 \pm 30.000 \pm 36.000 \pm 42.000 \pm 48.000 \pm 60.000 \pm 72.000 \pm 84.000 \pm 96.000 \pm 108.000 \pm 120.000 \pm 144.000 \pm 168.000 \pm 192.000 \pm 216.000 \pm 240.000 \pm 264.000 \pm 288.000 \pm 312.000 \pm 336.000 \pm 360.000 \pm 384.000 \pm 408.000 \pm 432.000 \pm 456.000 \pm 480.000 \pm 504.000 \pm 528.000 \pm 552.000 \pm 576.000 \pm 600.000 \pm 624.000 \pm 648.000 \pm 672.000 \pm 696.000 \pm 720.000 \pm 744.000 \pm 768.000 \pm 792.000 \pm 816.000 \pm 840.000 \pm 864.000 \pm 888.000 \pm 912.000 \pm 936.000 \pm 960.000 \pm 984.000 \pm 1000.000 \pm 1050.000 \pm 1100.000 \pm 1150.000 \pm 1200.000 \pm 1250.000 \pm 1300.000 \pm 1350.000 \pm 1400.000 \pm 1450.000 \pm 1500.000 \pm 1550.000 \pm 1600.000 \pm 1650.000 \pm 1700.000 \pm 1750.000 \pm 1800.000 \pm 1850.000 \pm 1900.000 \pm 1950.000 \pm 2000.000 \pm 2050.000 \pm 2100.000 \pm 2150.000 \pm 2200.000 \pm 2250.000 \pm 2300.000 \pm 2350.000 \pm 2400.000 \pm 2450.000 \pm 2500.000 \pm 2550.000 \pm 2600.000 \pm 2650.000 \pm 2700.000 \pm 2750.000 \pm 2800.000 \pm 2850.000 \pm 2900.000 \pm 2950.000 \pm 3000.000 \pm 3050.000 \pm 3100.000 \pm 3150.000 \pm 3200.000 \pm 3250.000 \pm 3300.000 \pm 3350.000 \pm 3400.000 \pm 3450.000 \pm 3500.000 \pm 3550.000 \pm 3600.000 \pm 3650.000 \pm 3700.000 \pm 3750.000 \pm 3800.000 \pm 3850.000 \pm 3900.000 \pm 3950.000 \pm 4000.000 \pm 4050.000 \pm 4100.000 \pm 4150.000 \pm 4200.000 \pm 4250.000 \pm 4300.000 \pm 4350.000 \pm 4400.000 \pm 4450.000 \pm 4500.000 \pm 4550.000 \pm 4600.000 \pm 4650.000 \pm 4700.000 \pm 4750.000 \pm 4800.000 \pm 4850.000 \pm 4900.000 \pm 4950.000 \pm 5000.000 \pm 5050.000 \pm 5100.000 \pm 5150.000 \pm 5200.000 \pm 5250.000 \pm 5300.000 \pm 5350.000 \pm 5400.000 \pm 5450.000 \pm 5500.000 \pm 5550.000 \pm 5600.000 \pm 5650.000 \pm 5700.000 \pm 5750.000 \pm 5800.000 \pm 5850.000 \pm 5900.000 \pm 5950.000 \pm 6000.000 \pm 6050.000 \pm 6100.000 \pm 6150.000 \pm 6200.000 \pm 6250.000 \pm 6300.000 \pm 6350.000 \pm 6400.000 \pm 6450.000 \pm 6500.000 \pm 6550.000 \pm 6600.000 \pm 6650.000 \pm 6700.000 \pm 6750.000 \pm 6800.000 \pm 6850.000 \pm 6900.000 \pm 6950.000 \pm 7000.000 \pm 7050.000 \pm 7100.000 \pm 7150.000 \pm 7200.000 \pm 7250.000 \pm 7300.000 \pm 7350.000 \pm 7400.000 \pm 7450.000 \pm 7500.000 \pm 7550.000 \pm 7600.000 \pm 7650.000 \pm 7700.000 \pm 7750.000 \pm 7800.000 \pm 7850.000 \pm 7900.000 \pm 7950.000 \pm 8000.000 \pm 8050.000 \pm 8100.000 \pm 8150.000 \pm 8200.000 \pm 8250.000 \pm 8300.000 \pm 8350.000 \pm 8400.000 \pm 8450.000 \pm 8500.000 \pm 8550.000 \pm 8600.000 \pm 8650.000 \pm 8700.000 \pm 8750.000 \pm 8800.000 \pm 8850.000 \pm 8900.000 \pm 8950.000 \pm 9000.000 \pm 9050.000 \pm 9100.000 \pm 9150.000 \pm 9200.000 \pm 9250.000 \pm 9300.000 \pm 9350.000 \pm 9400.000 \pm 9450.000 \pm 9500.000 \pm 9550.000 \pm 9600.000 \pm 9650.000 \pm 9700.000 \pm 9750.000 \pm 9800.000 \pm 9850.000 \pm 9900.000 \pm 9950.000 \pm 10000.000 </p>		<p>TRANE <small>ADDITIONAL INFORMATION ADVANTAGE</small> <small>THIS DRAWING IS PRELIMINARY AND SHALL NOT BE COPIED OR ITS CONTENTS DISCLOSED TO ANY OTHER PARTY WITHOUT THE WRITTEN CONSENT OF TRANE</small></p> <p>DATE: 02-26-04 THIRD ANGLE PROJECTION</p> <p>DO NOT SCALE PRINT</p> <p>SIMILAR TO:</p>	<p>5712-0496 SHEET 1 OF 1 REV A</p> <p>PIPE WRAP ASSY MEDIUM AIR COOLED (DISCHARGE) RTA</p>
---	--	--	--

EXT.	IONS	EFF.	HZ.	CKT #1	CKT #2
01	185	HIGH	60&50	X	X



<p>UNLESS OTHERWISE SPECIFIED ALL DIMENSIONS ARE IN INCHES. TOLERANCE:</p> <p>± .005 ± .010 ± .015 ± .020 ± .030 ± .040 ± .050 ± .060 ± .070 ± .080 ± .090 ± .100 ± .125 ± .150 ± .175 ± .200 ± .250 ± .300 ± .375 ± .450 ± .500 ± .625 ± .750 ± .875 ± 1.000 ± 1.250 ± 1.500 ± 1.750 ± 2.000 ± 2.500 ± 3.000 ± 3.500 ± 4.000 ± 4.500 ± 5.000 ± 6.000 ± 7.000 ± 8.000 ± 9.000 ± 10.000</p> <p>ANGLES = ± ° HOLE DIA = ± CONFORMS TO ASME Y14.5M-1994.</p>	<p>TRANE A DIVISION OF TRANE INTERNATIONAL, INC. THIS DRAWING IS PROPERTY OF TRANE AND SHALL NOT BE COPIED OR ITS CONTENTS DISCLOSED OR REPRODUCED IN ANY MANNER WITHOUT THE WRITTEN CONSENT OF TRANE. DRAWN BY: D.FROMM DATE: 02-26-04 THIRD ANGLE PROJECTION DO NOT SCALE PRINT SIMILAR TO:</p>	<p>5712-0497 PIPE WRAP ASSY MEDIUM AIR COOLED (DISCHARGE) RTA</p>	<p>REV 1 SHEET 1 OF 1 A</p>
---	---	---	-------------------------------------

EXT.	TONS	EFF. HIGH	HZ	CKT #1	CKT #2
01	185	HIGH	60&50	X	X
	200	HIGH	60&50	X	X
	225	STD	60	X	X
	250	STD	60	X	X



Trane
A business of American Standard Companies
www.trane.com

For more information contact your local district office or e-mail us at comfort@trane.com

Literature Order Number	RTAC-SVN01D-EN
File Number	SV-RF-RTAC-SVN01D-EN-0604
Supersedes	RTAC-SVN01C-EN
Stocking Location	Electronic Only

Trane has a policy of continuous product data and product improvement and reserves the right to change design and specifications without notice. Only qualified technicians should perform the installation and servicing of equipment referred to in this bulletin.