



Configuration Instructions

Air-Fi™ Wireless Communications Sensor (WCS)

X3964126601

SAFETY WARNING
Only qualified personnel should install and service the equipment. The installation, starting up, and servicing of heating, ventilating, and air-conditioning equipment can be hazardous and requires specific knowledge and training. Improperly installed, adjusted or altered equipment by an unqualified person could result in death or serious injury. When working on the equipment, observe all precautions in the literature and on the tags, stickers, and labels that are attached to the equipment.

December 2020

BAS-SVN217D-EN

© 2020 Trane



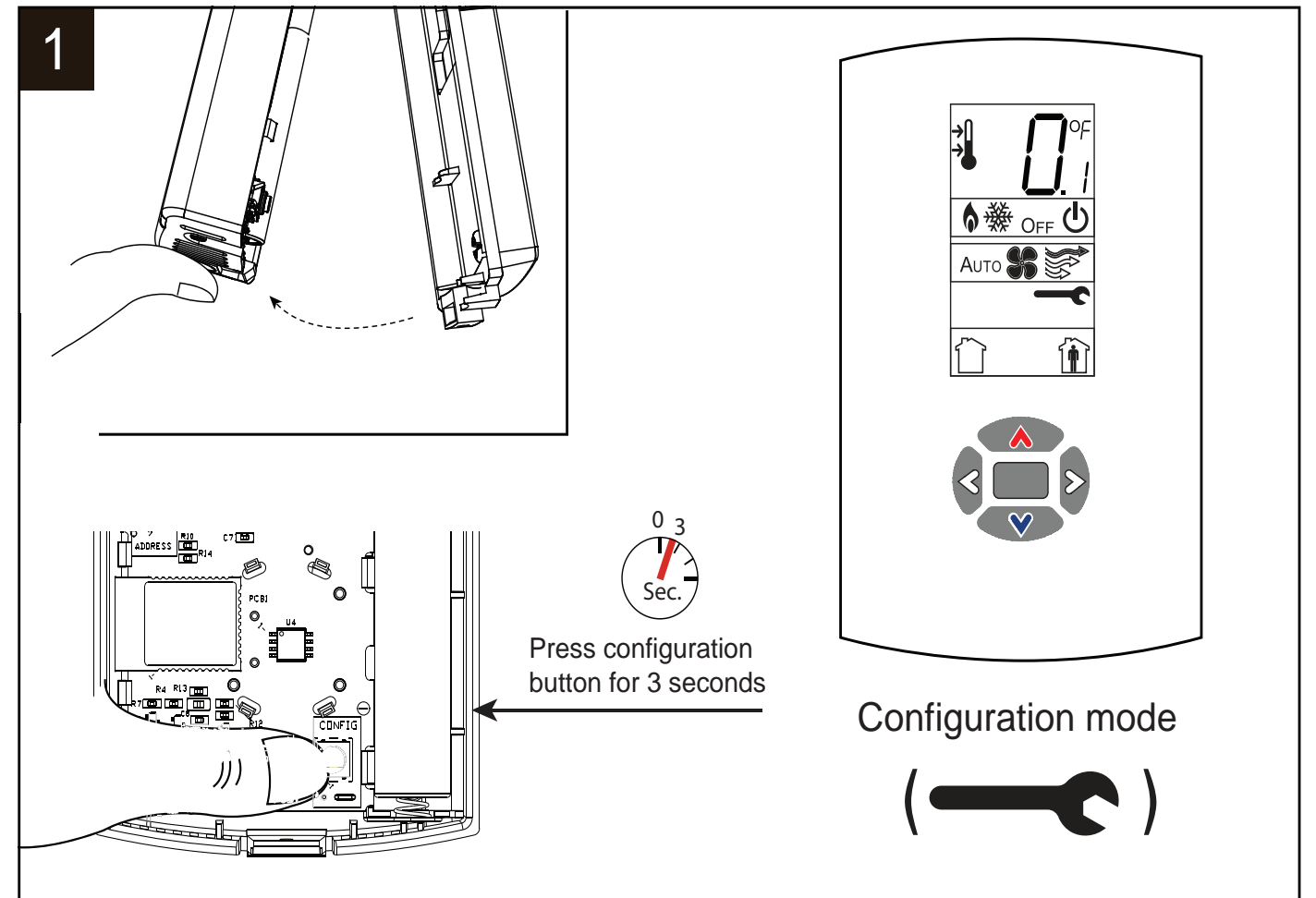
1 Warnings, Cautions, and Notices

Read this manual thoroughly before operating or servicing this unit. Safety advisories appear throughout this manual as required. Your personal safety and the proper operation of this machine depend upon the strict observance of these precautions.

- The three types of advisories are defined as follows:
- WARNING** Indicates a potentially hazardous situation which, if not avoided, could result in death or serious injury.
 - CAUTION** Indicates a potentially hazardous situation which, if not avoided, could result in minor or moderate injury. It could also be used to alert against unsafe equipment or property-damage only accidents.
 - NOTICE** Indicates a situation that could result in equipment or property-damage only accidents.

WARNING
Proper Field Wiring and Grounding Required!
Failure to follow code could result in death or serious injury. All field wiring **MUST** be performed by qualified personnel. Improperly installed and grounded field wiring poses **FIRE** and **ELECTROCUTION** hazards. To avoid these hazards, you **MUST** follow requirements for field wiring installation and grounding as described in NEC and your local/state electrical codes.

WARNING
Personal Protective Equipment Required!
Installing/servicing this unit could result in exposure to electrical, mechanical and chemical hazards. Before installing/servicing this unit, technicians **MUST** put on all Personal Protective Equipment (PPE) recommended for the work being undertaken. ALWAYS refer to appropriate SDS sheets and OSHA guidelines for proper PPE. When working with or around hazardous chemicals, ALWAYS refer to the appropriate SDS sheets and OSHA guidelines for information on allowable personal exposure levels, proper respiratory protection and handling recommendations. If there is a risk of arc or flash, technicians **MUST** put on all necessary Personal Protective Equipment (PPE) in accordance with NFPA70E for arc/flash protection **PRIOR** to servicing the unit. Failure to follow recommendations could result in death or serious injury.

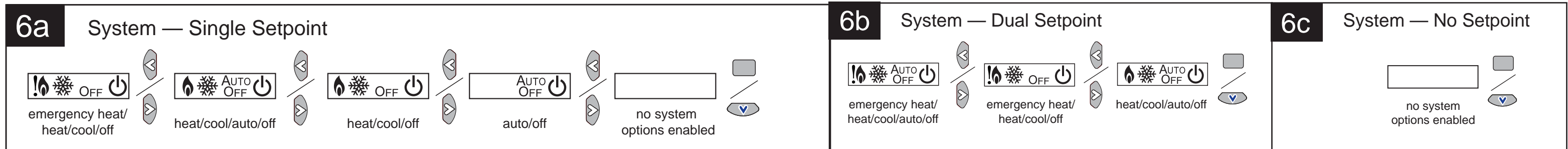
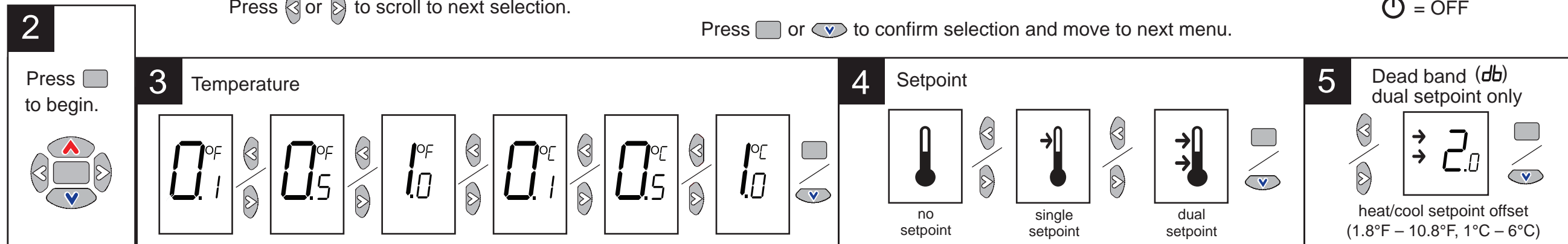


Follow these steps in the order presented.

Press or to scroll to next selection.

Press or to confirm selection and move to next menu.

= OFF



7 Fan (Not all fan options are available for all systems.)

Diagram illustrating various fan modes and their settings:

- auto/off
- auto/off/low/high
- auto/off/low/med/high
- auto/high (on)
- auto/high (on)
- off/low/high
- off/low/med/high
- no fan options enabled

8 Occupancy (timed override)

Diagram illustrating occupancy settings:

- occupancy enabled
- occupancy disabled

9 Adjusting temperature calibration offset

Adjustable in increments of 0.1°F or 0.1°C to a maximum of ±3.6°F or ±2°C

10 Adjusting humidity calibration offset*

Adjustable in increments of ±0.1%RH to a maximum of ±5.0%RH

*Available if the RH module is installed on the WCS.

11 Setting summary

12 Return to operating mode

Press configuration button for 3 seconds (see step 1).

Sensor will revert to operating mode if no buttons are pressed for 10 minutes.

Display Setpoint (→) or Temperature

A Begin here → Operating mode Home screen

B Press up and down arrows for 3 seconds.

0.3 Sec.

Setpoint

Temperature

Test signal strength

View battery status

Press center button twice

Error Codes

If an error code appears, view definitions on the inside of the base plate or in the Installation, Operation, and Maintenance guide (BAS-SVX40*-EN).

Trane - by Trane Technologies (NYSE: TT), a global climate innovator - creates comfortable, energy efficient indoor environments for commercial and residential applications. For more information, please visit trane.com or tranetechnologies.com.

Trane has a policy of continuous product and product data improvement and reserves the right to change design and specifications without notice. We are committed to using environmentally conscious print practices.