

Installer's Guide

Extreme Condition Mounting Kit

BAYECMT023

BAYECMT004

⚠ WARNING: HAZARDOUS VOLTAGE – DISCONNECT POWER BEFORE SERVICING

ALL phases of this installation must comply with NATIONAL, STATE AND LOCAL CODES

IMPORTANT – This Document is **customer property** and is to remain with this unit. Please return to service information pack upon completion of work.

KIT CONTENT – BAYECMT023:

Will mount 10 individual units.

Base Tab Bracket – Qty 40 (Height 2.1" for Base 2 & 3)

Backup Clip – Qty 40

Self drilling 12–14 Screws – Qty 45

12–18 Screws – Qty 45

KIT CONTENT – BAYECMT004:

Will mount 5 - 10 individual units depending on unit height. See Installation - BAYECMT004 UNITS greater to or equal to 51" versus 54".

Base Tab Bracket – Qty 40 (Height 2.5" for Base 4)

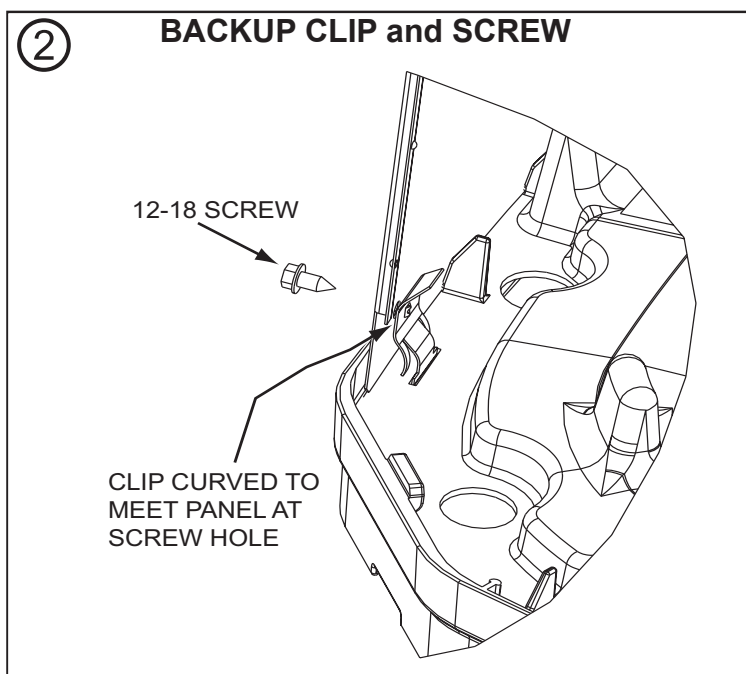
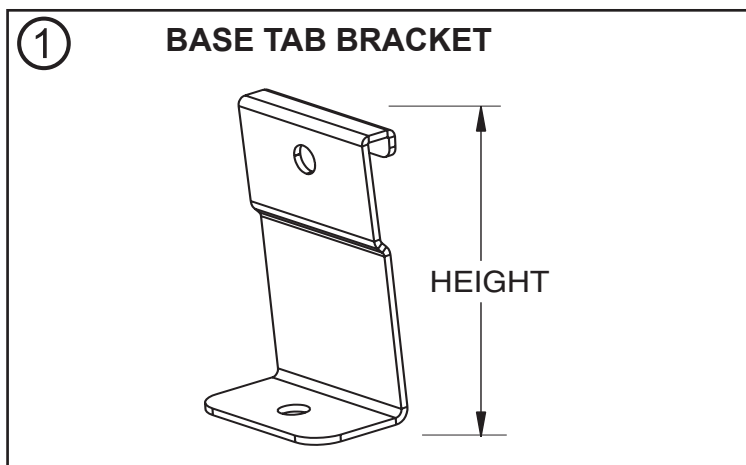
Backup Clip – Qty 40

Self drilling 12–14 Screws – Qty 45

12–18 Screws – Qty 45

INSPECTION – ALL KITS:

Check carefully for any shipping damage. This must be reported to and claims made against the transportation company immediately. Any missing parts should be reported to your supplier at once and replaced with authorized parts only.



Installer's Guide

INSTALLATION – BAYECMT023:

1. Installation of the Extreme Condition Mounting Kit must be made prior to connecting refrigerant lines and/or electrical power to the unit.
2. The installation location must (i) be a ground-level application and (ii) must not be a location susceptible to channeling effects or buffeting in the wake of upwind obstructions. It is the installer's responsibility to ensure that the slab mounting method meets or exceeds the requirements of local code and is approved by the appropriate local code authority.
3. Tip the uncrated unit to expose the base, insert the four (4) Backup clips through the slit openings in the base with the screw engagement hole facing the side louvered panels. See Figures 2 & 3. Each panel has a hole or dimple to mark the screw location. If a dimple is present, drill a ¼" hole at the dimple. Using (4) of the 12-18 screws in the kit, attach each side panel to the matching Backup Clip.
4. Attach the (4) Base Tab Brackets to the unit base using (4) of the 12-14 self drilling screws in the kit, locating them two to each long side of the unit (not on the service access and opposite side), *using (4) field provided bolts appropriate to the material the unit is mounted on* (recommend a 0.25" diameter bolt with a minimum of SAE-Grade 5 (ASTM-A449) or better with a appropriate washer). See Figures 1, 2 & 3.

INSTALLATION – BAYECMT004 UNITS

51" TALL OR LESS:

1. Installation of the Extreme Condition Mounting Kit must be made prior to connecting refrigerant lines and/or electrical power to the unit.
2. The installation location must (i) be a ground-level application and (ii) must not be a location susceptible to channeling effects or buffeting in the wake of upwind obstructions. It is the installer's responsibility to ensure that the slab mounting method meets or exceeds the requirements of local code and is approved by the appropriate local code authority.
3. Tip the uncrated unit to expose the base, insert the four (4) Backup clips through the slit openings in the base with the screw engagement hole facing the side louvered panels. See Figures 2 & 3. Each panel has a hole or dimple to mark the screw location. If a dimple is present, drill a ¼" hole at the dimple. Using (4) of the 12-18 screws in the kit, attach each side panel to the matching Backup Clip.

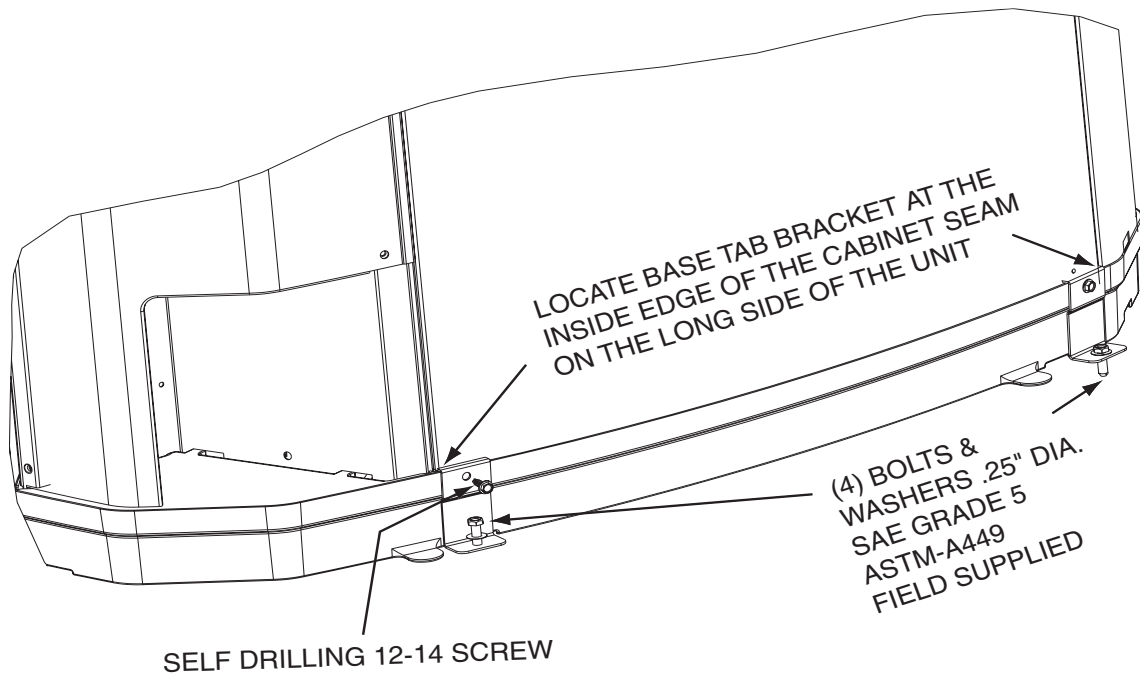
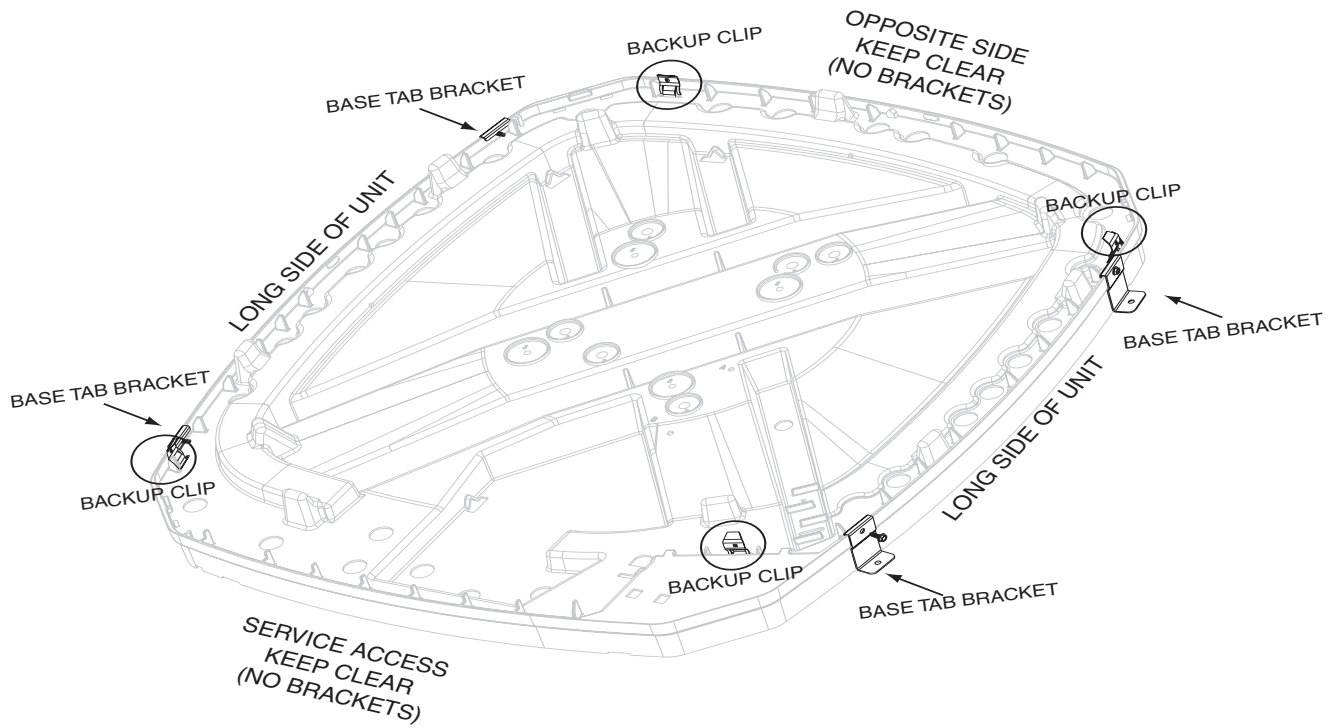
4. Attach the (4) Base Tab Brackets to the unit base using (4) of the 12-14 self drilling screws in the kit, locating them two to each long side of the unit (not on the service access and opposite side), *using (4) field provided bolts appropriate to the material the unit is mounted on* (recommend a 0.25" diameter bolt with a minimum of SAE-Grade 5 (ASTM-A449) or better with a appropriate washer). See Figures 1, 2 & 3.

INSTALLATION – BAYECMT004 UNITS 54" TALL:

1. Installation of the Extreme Condition Mounting Kit must be made prior to connecting refrigerant lines and/or electrical power to the unit.
2. The installation location must (i) be a ground-level application and (ii) must not be a location susceptible to channeling effects or buffeting in the wake of upwind obstructions. It is the installer's responsibility to ensure that the slab mounting method meets or exceeds the requirements of local code and is approved by the appropriate local code authority.
3. Tip the uncrated unit to expose the base, insert the four (4) Backup clips through the slit openings in the base with the screw engagement hole facing the side louvered panels. See Figures 2 & 3. Each panel has a hole or dimple to mark the screw location. If a dimple is present, drill a ¼" hole at the dimple. Using (4) of the 12-18 screws in the kit, attach each side panel to the matching Backup Clip.
4. Attach the (8) Base Tab Brackets to the unit base using (8) of the 12-14 self drilling screws in the kit, locating them **four** to each long side of the unit (not on the service access and opposite side), *using (8) field provided bolts appropriate to the material the unit is mounted on* (recommend a 0.25" diameter bolt with a minimum of SAE-Grade 5 (ASTM-A449) or better with a appropriate washer). See Figures 1, 2 & 4.

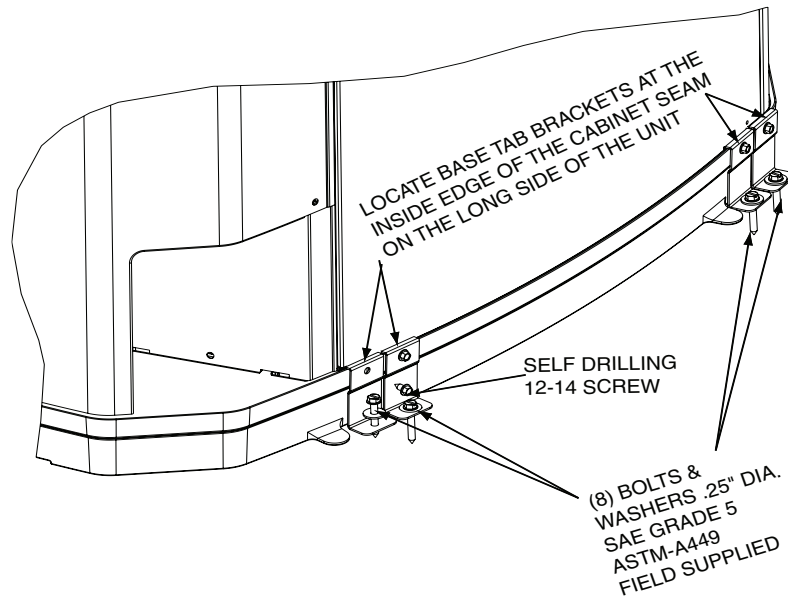
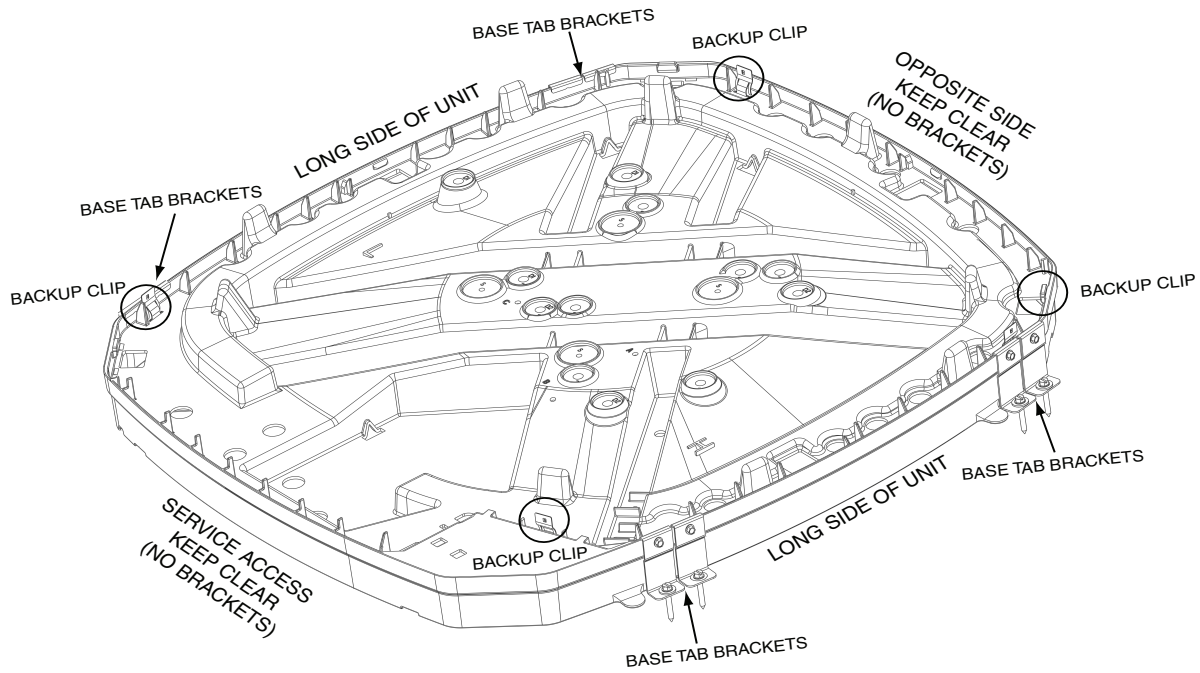
3

**BAYECMT023 & BAYECMT004 (51" TALL OR LESS)
BACKUP CLIP and BASE TAB BRACKET LOCATIONS**



④

**BAYECMT004 (54" TALL)
BACKUP CLIP and BASE TAB BRACKET LOCATIONS**



About Trane and American Standard Heating and Air Conditioning
Trane and American Standard create comfortable, energy efficient indoor environments for residential applications. For more information, please visit www.trane.com or www.americanstandardair.com

The manufacturer has a policy of continuous data improvement and it reserves the right to change design and specifications without notice. We are committed to using environmentally conscious print practices.