

INSTALLER'S GUIDE

Models:
BAYLOAM011A

Used with:
4WHC3024-060

Low Ambient Cooling Control

IMPORTANT: This document is customer property and is to remain with this unit. Please place in service information pack upon completion of work.

General

The evaporator defrost control (EDC) is installed in the evaporator (indoor) coil face area. Its purpose is to cycle the compressor when the evaporator frosts under low outdoor ambient cooling conditions. The EDC will open at 0 degree F and de-energize the compressor circuit. After an increase in coil temperature the EDC will re-close at 50 degree F and restart the compressor.

Parts List

- A. Two (2) no. 8 - 32 by 1/4 hex head screws
- B. E.D.C. control with two (2) yellow wires attached
- C. Two (2) insulated wire connectors.
- D. Two (2) yellow wires 60 " long

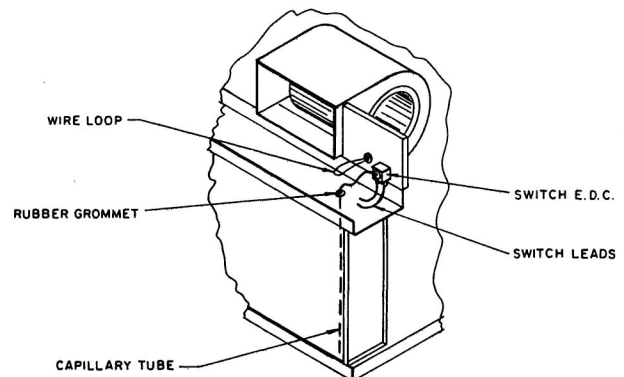
Installation (TCH & WCH Units)

!/\ WARNING: Open and lock unit disconnect. Failure to do so may result in severe injury or death from electrical shock or contact with moving parts.

- 1 Remove unit's top cover. Retain all screws for re-installation.
- 2 Insert EDC capillary tube down into the indoor coil face area thru the rubber grommet provided with unit. Make sure the capillary tube end touches the condensate drain pan. (See Figure 1). Coil excess capillary tube above grommet and be sure to keep clear of EDC electrical terminals.

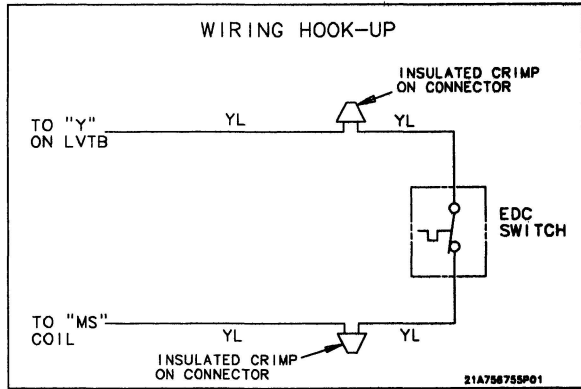
- 3 Mount the EDC with the two (2) screws provided in package. (See Figure 1 for location).
- 4 Cut wire loop in half and strip insulation back 1/2 in. from end on both wires. (See Figure 1)

Figure 1



- 5 Connect EDC wires to wires stripped in step 4 above with insulated wire connectors provided. (See Figure 2). Make sure connectors clamp both wires securely and that no loose wire strands protrude from connectors.

Figure 2



6 Replace unit top cover and attach with screws retained from step 1.

7 Close unit disconnect and set thermostat to desired temperature for operation.

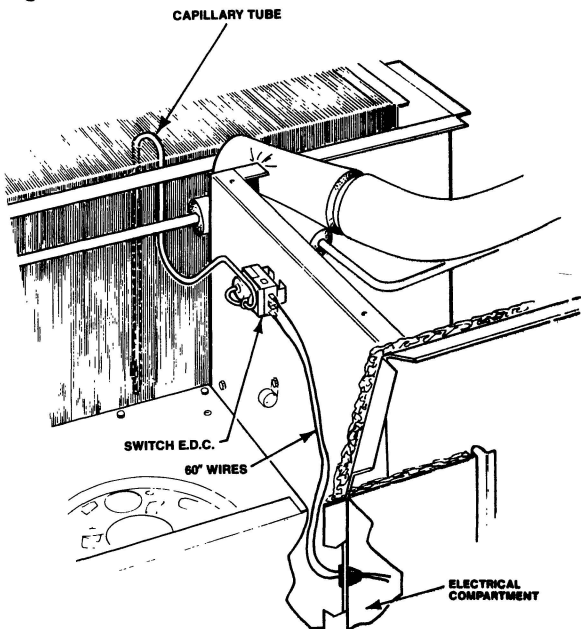
Installation (TCC, YCC, & WCC Units)

! WARNING: Open and lock unit disconnect. Failure to do so may result in severe injury or death from electrical shock or contact with moving parts.

1 Remove unit's control box access cover and the top cover. Retain all screws for re-installation.

2 Insert EDC capillary tube into the indoor coil face. Make sure the capillary tube end touches the condensate drain pan. (See Figure 3) Coil excess capillary tube and be sure to keep clear of the EDC electrical terminals.

Figure 3



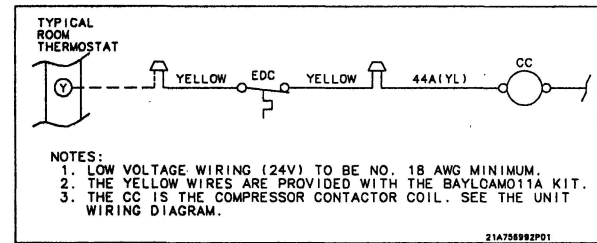
3 Mount the EDC with the two (2) screws provided.

4 Disconnect the two (2) short yellow wires from the EDC and connect the two (2) long leads (provided) to the EDC terminals.

5 Remove the knockout in the control box barrier and insert the bushing in the hole. Route the wires through the bushing.

6 Route the wire leads into the unit control box's low voltage area and make connections per Figure 4.

Figure 4



7 With wire ties (provided) secure the wire leads to prevent them from coming into contact with moving parts.

8 Replace the unit's top cover and control box cover with screws retained in step 1.

9 Close unit disconnect and set thermostat to desired operating temperature.