

# INSTALLER'S GUIDE

18-GH33D1-1A-EN

ALL phases of this installation must comply with NATIONAL, STATE AND LOCAL CODES

## Coil TXV Kit:

2AYTXVH3E1824A  
2AYTXVH3E2536A  
2AYTXVH3E6363A

Fits Coil Models:

4NXA and 4NXC

**IMPORTANT**— This Document is customer property and is to remain with this unit. Please return to service information pack upon completion of work.

### General Information

The Coil TXV Kit is intended only for use with the specific models of the 4NXA and 4NXC coils.

The Coil Thermostatic Expansion Valve (TXV) Kit is used to convert an R-410A application to an R-22 application.

**NOTE:** The TXV type must always match the refrigerant type listed on the name plate of the outside unit.

### Kit Identification

Confirm the Coil TXV Kit type is approved to be used with the coil model. See Table 1 to verify proper kit and product model number.

### Inspection

Check carefully for any shipping damage. Any damage must be reported to, and claims made against the transportation company immediately. Any missing parts should be reported to your supplier at once and replaced with authorized parts only.

## Coil TXV Kit Contents

This kit is used to convert a coil to R-22 refrigerant.

Open and inspect contents for damage or missing items.

Each kit contains:

No.	Qty	Description
1	1	R22 Expansion Valve
2	2	Teflon® O-ring
3	1	R22 Caution Label
4	1	Installer's Guide (Not shown)
5	1	Bulb Insulation
6	1	Cable Tie
7	1	Liquid Tube Assembly
8	1	Nut
9	1	Bulb Clip

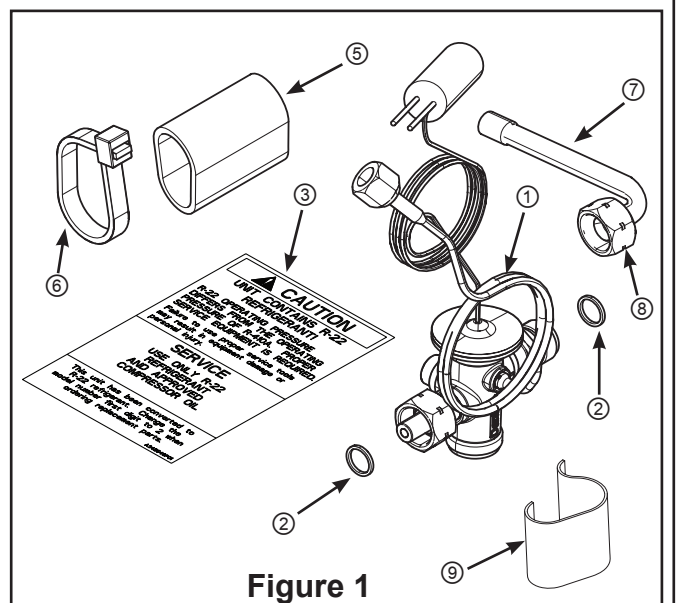


Figure 1

**Installation Instructions**

1. If the coil has never been installed go to Step 2.  
If the coil has been previously installed, recover system charge or “pump-down” system charge into the condensing unit complying with EPA regulations.

**NOTE: Minimize the amount of movement of the liquid and distributor tubes to prevent work hardening.**

2. Remove the line set and coil panels from the coil.
3. Slide the coil out and remove the side drain pan.
4. Remove the sensing bulb from the suction line manifold by removing the wire tie and bulb insulation.
5. Using a back-up wrench, loosen the external equalizing coupling.

**NOTE: Some coils may have a rubber sleeve on the bulb or equalizer line. For the bulb, the rubber sleeve is removed by sliding off the bulb line after the bulb and clip are removed from the suction line. For the equalizer line, the rubber sleeve is removed by sliding it off of the equalizer line after the equalizer nut is unscrewed and the line has been disconnected from the suction line. Save the rubber sleeves for installation on the replacement valve bulb.**

6. Using a back-up wrench, loosen mechanical fittings between the TXV and distributor. Cut the wire tie attaching the TXV to the bracket.

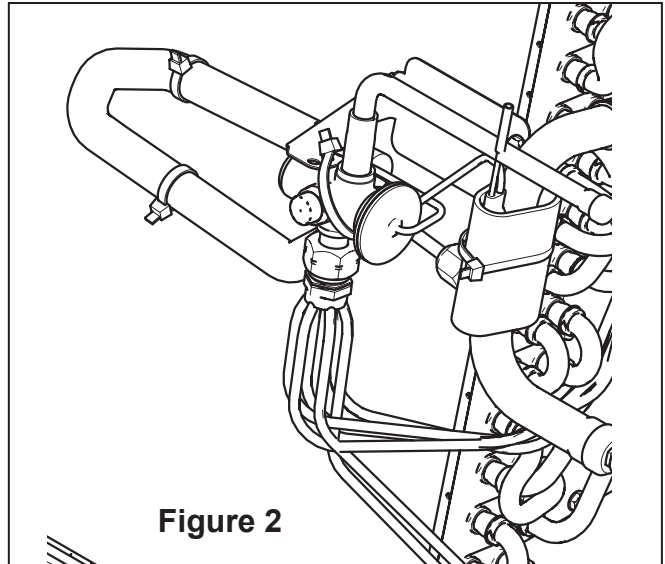
**NOTE: Remove and discard the existing Teflon O-rings from the existing flow control assembly. O-rings may be attached to the TXV or the fittings.**

**Installation Instructions**

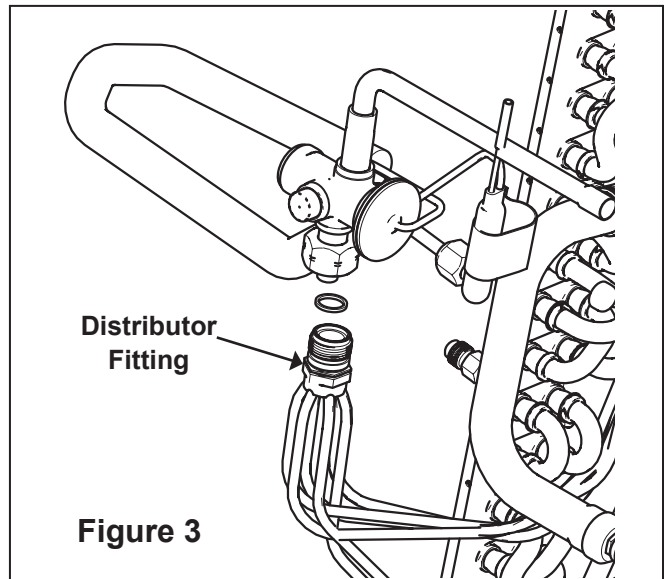
7. DO NOT oil threads. To install the Coil TXV, install one new O-ring over the Distributor Fitting (Figure 4). Install the other new O-ring over the Liquid Line Fitting (Figure 4) and connect the adapters by hand to ensure proper mating of threads. The new O-rings are supplied in the kit. Tighten until bodies “bottom” or a definite resistance is felt. The valve will only fit in one direction of flow. Use a back-up wrench and tighten an additional 1/4 turn.

**IMPORTANT: Correct tightening of the couplings is very important. Under- or over-tightening may result in a coupling leak.**

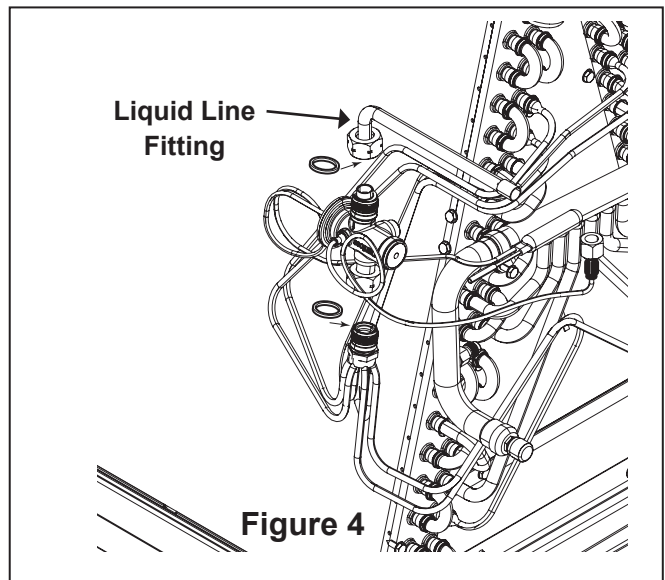
8. Replace any rubber sleeves that were removed from the bulbs or equalizer line.
9. Install the Equalizer Line (Figure 5), hand-tighten until flare bottoms, then use a back-up wrench to tighten securely.



**Figure 2**



**Figure 3**



**Figure 4**

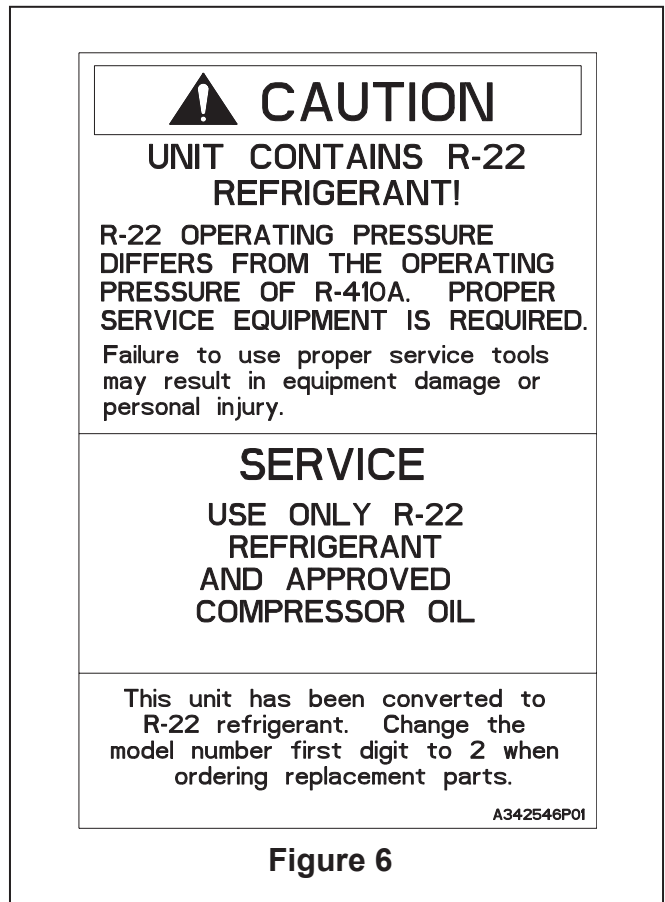
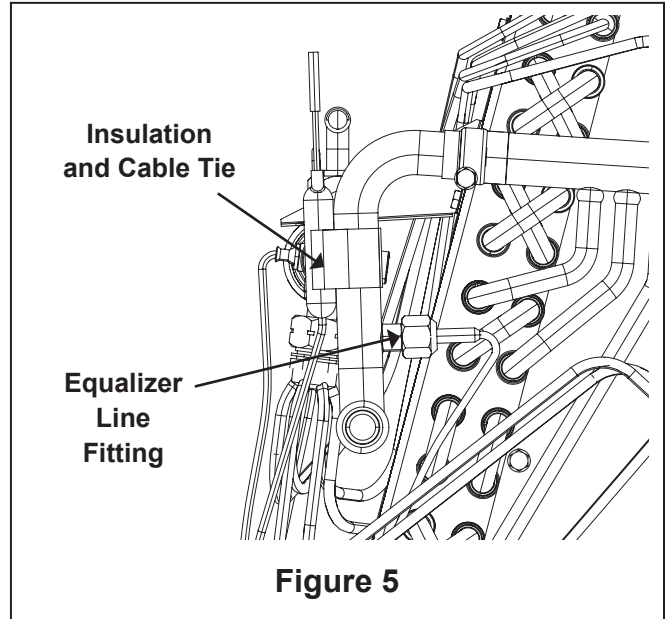
**IMPORTANT: Replacing the liquid line filter drier is recommended if system has been commissioned. This is not necessary if this kit is being installed on a new coil.**

10. To avoid damaging the TXV, remove the bulb or wrap a wet rag around the suction line between the TXV bulb and the braze joint before brazing.
11. After completing the brazing operation, allow the lines to cool. Attach the bulb, using the supplied spring clip, wrap with supplied insulation, and secure with supplied cable tie in the position illustrated in Figure 5.

The entire length of the bulb must be in firm contact with the gas line. The remote bulb tubing must not be allowed to touch a surface colder than the remote bulb location. The remote bulb tubing must be isolated from rubbing all other components.

12. Pressurize with dry nitrogen and leak test all joints to insure no leaks exist. Evacuate system to a minimum of 500 microns.
13. Verify that all distributor tubes are positioned over the drain pan to assure that any condensate is collected.
14. Open valves to outdoor unit if pumped-down or charge to a minimum of 50 psig static pressure. Start system and charge to appropriate level per the charging method recommended in the Outdoor Unit Installer's Guide.

**IMPORTANT: Install the caution label (Figure 6) on front panel of the unit.**



## Air Conditioning and Heat Pump Systems

TABLE 1

TXV	Description	Use with
2AYTXVH3E1824A	R-22 TXV conversion kit	4NXA,NXC - 018-024
2AYTXVH3E2536A	R-22 TXV conversion kit	4NXA,NXC - 025-036
2AYTXVH3E6363A	R-22 TXV conversion kit	4NXC - 063

### About Trane and American Standard Heating and Air Conditioning

Trane and American Standard create comfortable, energy efficient indoor environments for residential applications. For more information, please visit [www.trane.com](http://www.trane.com) or [www.americanstandardair.com](http://www.americanstandardair.com)

---

The manufacturer has a policy of continuous data improvement and it reserves the right to change design and specifications without notice. We are committed to using environmentally conscious print practices.