

# Rework Instructions

## Condensing Units

### KIT15795 - Sound Field Fix Kit 4TTM3 AND 4A7M3 Models

For units manufactured prior to date code 10273xxxAA

ALL phases of this installation must comply with NATIONAL, STATE AND LOCAL CODES

These instructions do not cover all variations in systems or provide for every possible contingency to be met in connection with the installation. Should further information be desired or should particular problems arise which are not covered sufficiently for the purchaser's purposes, the matter should be referred to your installing dealer or local distributor.

## Section 1. Safety

### WARNING

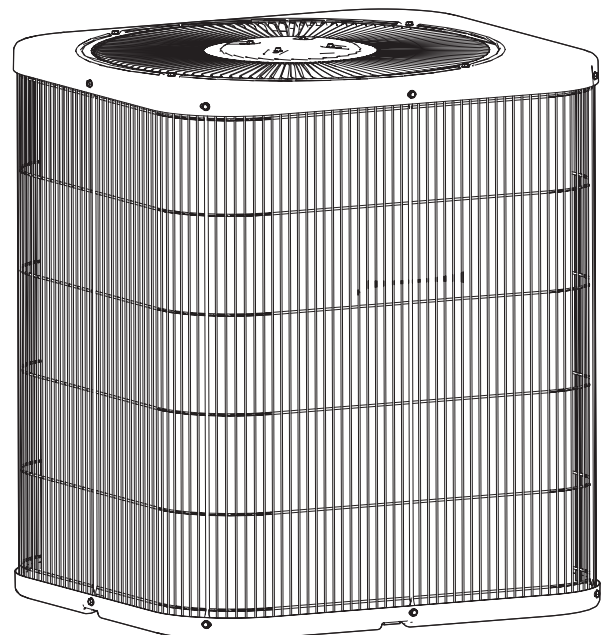
**SAFETY HAZARD!** This information is intended for use by individuals possessing adequate backgrounds of electrical and mechanical experience. Any attempt to repair a central air conditioning product may result in personal injury and/or property damage. The manufacturer or seller cannot be responsible for the interpretation of this information, nor can it assume any liability in connection with its use.

### CAUTION

**SAFETY HAZARD!** Sharp Edge Hazard. Be careful of sharp edges on equipment or any cuts made on sheet metal while installing or servicing. Personal injury may result.

### WARNING

**LIVE ELECTRICAL COMPONENTS!**  
During installation, testing, servicing, and troubleshooting of this product, it may be necessary to work with live electrical components. Failure to follow all electrical safety precautions when exposed to live electrical components could result in death or serious injury.



## Section 2. General Information

### Tools required:

5/16" nut driver  
1/4" nut driver  
Wire cutters  
1/2" deep well socket with ratchet and extensions

### Each kit contains:

10 - Foam strips 6"L x 1"W x 1/8" thick  
4 - Sleeves for compressor mounting bolts (for 3 1/2, 4 and 5 ton models only)  
1 - Wire tie  
4 - Tinnerman clips

## Section 3. Procedure

**IMPORTANT:** Throughout procedure, take care not to scratch unit panels.

### 3.1 Disassembly

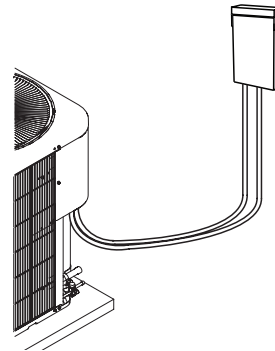
#### STEP 1

##### Field installed units:

Disconnect high voltage power to the outdoor unit

##### Factory units:

Remove shipping carton and other packaging material. Retain these materials to be reused when rework is complete.



#### STEP 2

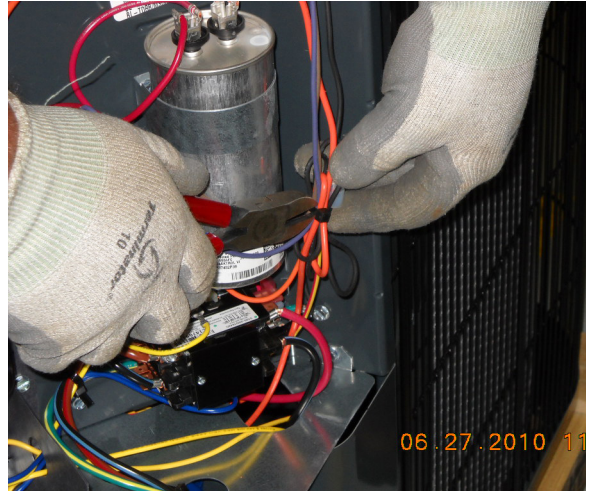
Remove the control box cover by taking out two 5/16" screws. Set control box cover and screws aside for reinstallation.



### STEP 3

Locate and cut the wire tie that holds the wiring to the outdoor fan motor.

**IMPORTANT:** Take care not to damage wire insulation.



### STEP 4

Remove eleven 5/16" screws that hold the top panel in place. Set screws aside for reuse.

**Factory Only:**

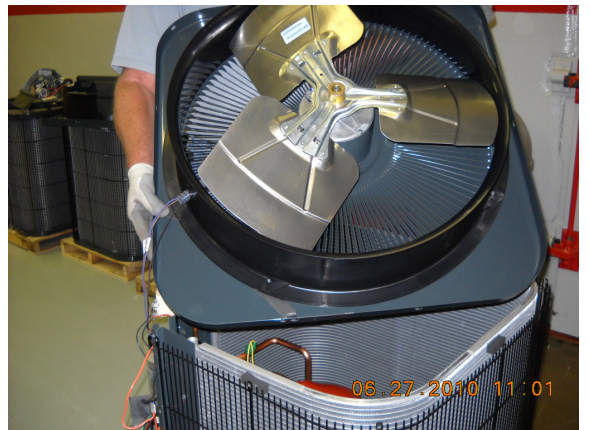
The hang tag is attached to one of the screws. Remove and retain for later installation.



### STEP 5

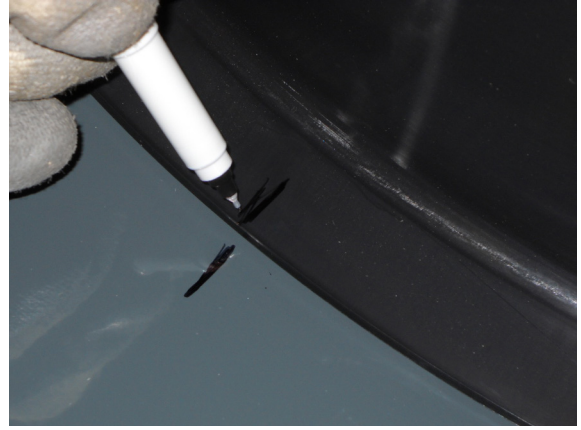
Carefully lift top panel from unit turning it upside down. This can be done by carefully rotating the top panel 180 degrees and laying it on top of the condenser coil.

**IMPORTANT:** Take care not to scratch top panel.



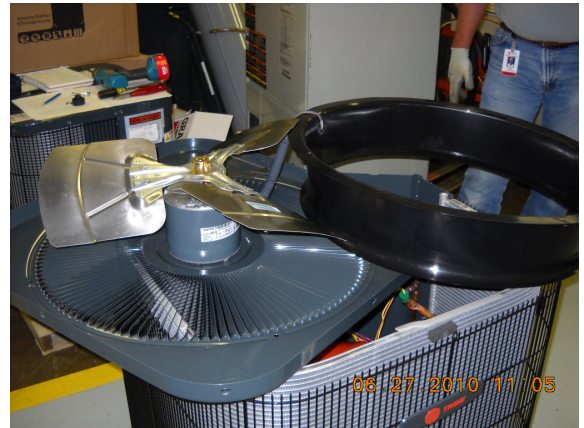
### STEP 6

Mark the orifice ring and top panel with a reference mark before removing the orifice ring from the top panel.



### STEP 7

Remove the plastic orifice ring by removing four  $\frac{1}{4}$ " screws from the top panel. It is necessary to change the position of the top panel to gain access to the screws as they are removed. Retain screws to reuse later.



### 3.2 Adding foam strips to orifice ring

#### STEP 1

Install four 6" long by 1" wide foam strips provided in kit to the orifice ring.

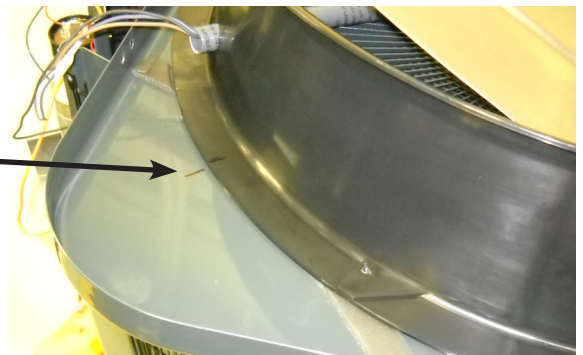
The edge of the foam strip should be placed as close to the edge of the orifice opening as possible.

The strips should be placed centered between the orifice ring mounting holes.



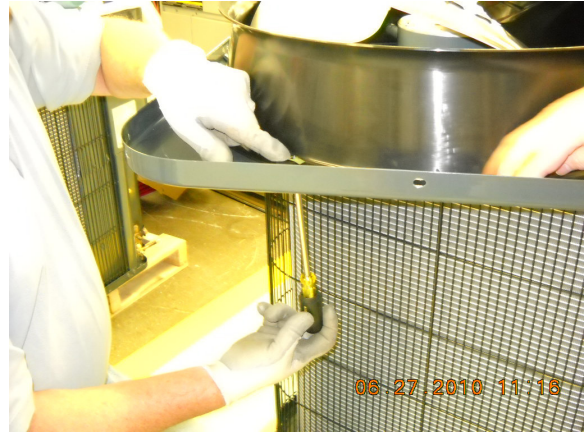
#### STEP 2

Set orifice ring on to top panel aligning the reference mark made previously.



### STEP 3

Reinstall ¼" orifice ring mounting screws using tinnerman clips provided in the kit.



As the screw comes through the plastic orifice ring, hold a tinnerman clip in place as the screw threads into it.

**IMPORTANT:** Tinnerman clip needs to be oriented so it is bowed upward as shown or it will not accept the screw.



Hold the tinnerman clip until it bites into the plastic orifice ring. Repeat this step for all four orifice ring mount screws.

It is necessary to change the orientation of the top panel to gain access to each orifice ring mounting screw.

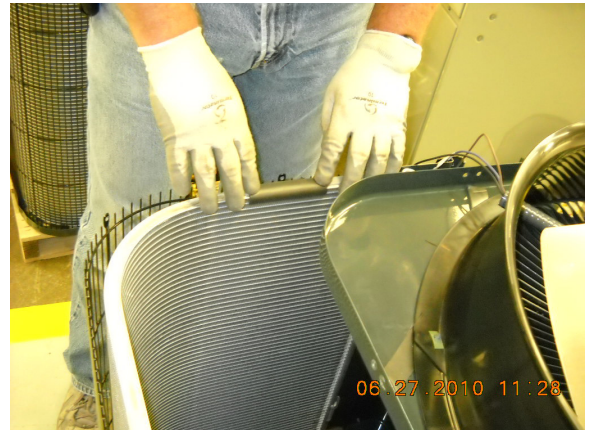
**NOTE:** Orifice ring mounting screws should be tight but caution should be used not to over tighten the screws. (20 inch-pounds of torque).



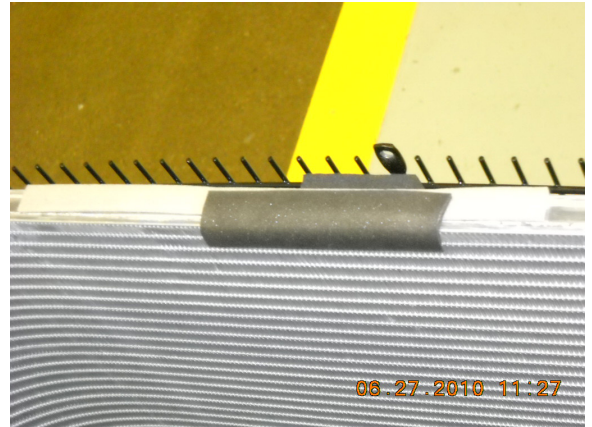
### 3.3 Adding foam strips to Condenser Coil

Install 6" long by 1" wide foam strips provided in the kit to top of condenser coil

In the center of each of the four sides of the condenser coil install foam strip to the top of the condenser coil



Fold the foam strip down on the inside of the condenser coil.

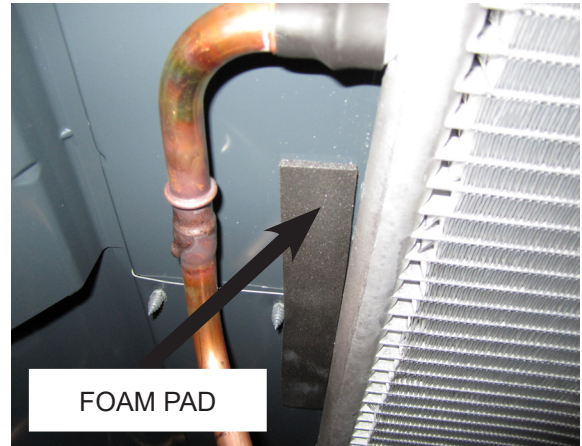


### 3.4 Adding foam strips to Control Panels

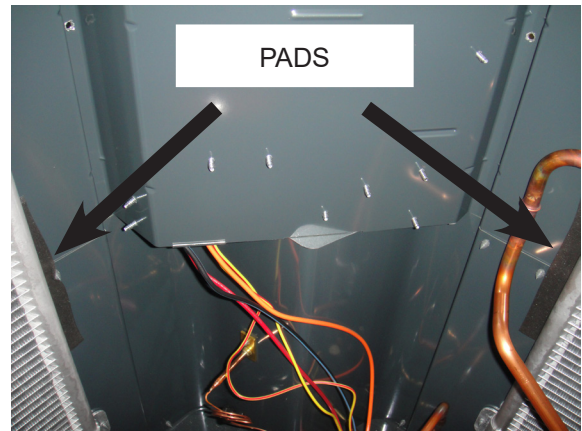
Install 6" by 1" foam padding provided in the kit to the seam of the lower and upper control panels.

From the inside of the unit press outward at the intersection of the upper and lower control panels.

While pressing out place the foam padding between the aluminum coil header and the panels.



This must be done on both sides of the upper and lower control panels.



### 3.5 Adding sleeve to compressor mounting

**NOTE:** This section only applies to 3 1/2, 4 and 5 ton models (which have scroll compressors)

It is necessary to add a sleeve to the compressor mounting grommet.

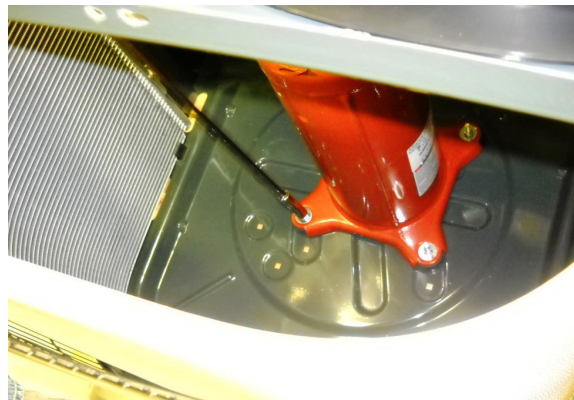
**IMPORTANT:** Take care so tools do not damage coil.





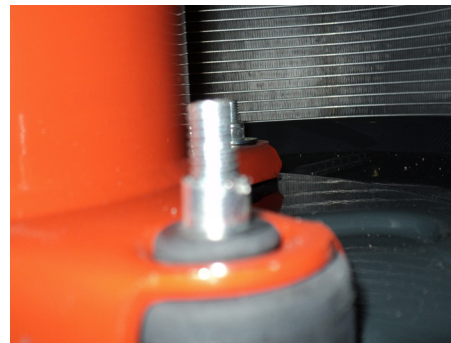
### STEP 1

Using a  $\frac{1}{2}$ " deep well socket remove the four nuts and washers from the compressor mounting bolts.



### STEP 2

Install sleeve over the compressor mounting bolt.



### STEP 3

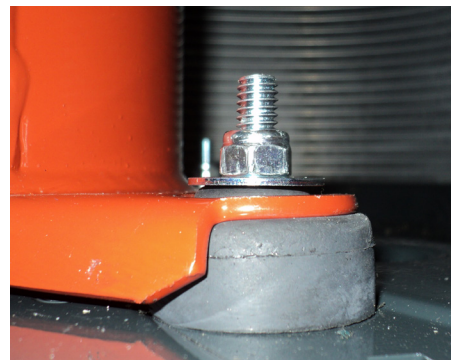
Press the sleeve into the rubber grommet.



### STEP 4

Install washer and nut on to compressor mount bolt

Tighten compressor mounting nut until the washer makes contact with the sleeve. Caution should be used not to over tighten the mounting nut (20 inch-pounds of torque).



### 3.6 Final Re-Assembly

#### STEP 1

Reposition top panel on unit.

**NOTE:** Be sure not to pinch outdoor fan motor wiring between top panel and control box.

Make sure the fan motor conduit is located so fan motor wiring will pass through notch in top of control box.

#### STEP 2

Install screws previously removed.

#### Factory Units:

Reattach hang tag which was previously removed.



#### STEP 3

Replace the wire tie, carefully bundling the wires.



#### **STEP 4**

Using a long slender probe, spin the fan blade to ensure clearance between fan blade and orifice ring.

#### **STEP 5**

Reinstall control box cover using two screws removed in previous step.

### **3.8 Start-up OR re-boxing**

#### **Field Units:**

Turn power back on, start unit and check operation.

#### **Factory Units:**

Repackage unit using packaging previously removed.

Mark sure the model and serial number on the carton matches the unit model and serial numbers.

Install green dot next to model and serial number label.

## About Trane and American Standard Heating and Air Conditioning

Trane and American Standard create comfortable, energy efficient indoor environments for residential applications. For more information, please visit [www.trane.com](http://www.trane.com) or [www.americanstandardair.com](http://www.americanstandardair.com)

---

The manufacturer has a policy of continuous data improvement and it reserves the right to change design and specifications without notice. We are committed to using environmentally conscious print practices.