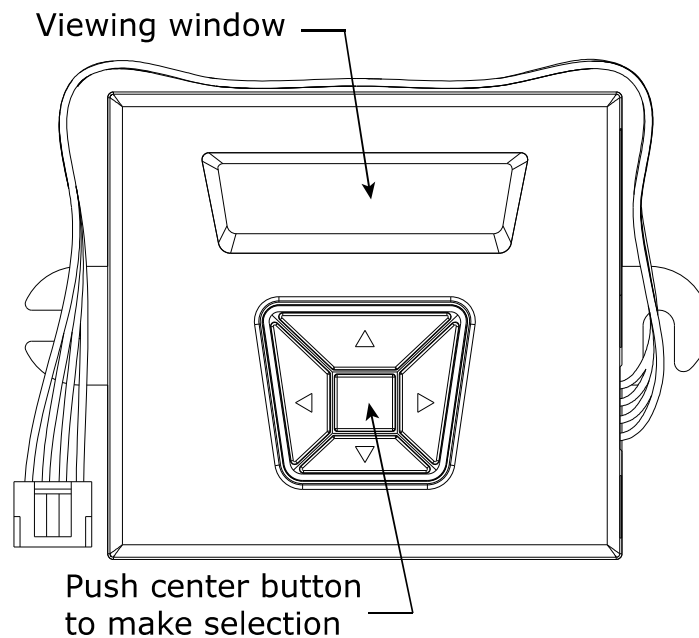


Installer's Guide

Communicating Display Assembly Tool Kit for TAM7 Air Handlers



▲ SAFETY WARNING

Only qualified personnel should install and service the equipment. The installation, starting up, and servicing of heating, ventilating, and air-conditioning equipment can be hazardous and requires specific knowledge and training. Improperly installed, adjusted or altered equipment by an unqualified person could result in death or serious injury. When working on the equipment, observe all precautions in the literature and on the tags, stickers, and labels that are attached to the equipment.

SAFETY SECTION

AIR HANDLERS

⚠ WARNING

SAFETY HAZARD!

Failure to follow this Warning could result in property damage, severe personal injury, or death..

This information is intended for use by individuals possessing adequate backgrounds of electrical and mechanical experience. The manufacturer or seller cannot be responsible for the interpretation of this information, nor can it assume any liability in connection with its use.

⚠ WARNING

HAZARDOUS VOLTAGE!

Failure to follow this Warning could result in property damage, severe personal injury, or death. Disconnect all electric power, including remote disconnects before servicing. Follow proper lockout/tagout procedures to ensure the power cannot be inadvertently energized.

⚠ WARNING

LIVE ELECTRICAL COMPONENTS!

Failure to follow this Warning could result in property damage, severe personal injury, or death. Follow all electrical safety precautions when exposed to live electrical components. It may be necessary to work with live electrical components during installation, testing, servicing, and troubleshooting of this product.

Table of Contents

General Information	4	Config Menu	6
Monitor Menu	5	Control Menu.....	7

General Information

Contents

1. Communicating Display Assembly (CDA)
2. 48" Connecting Harness

System Requirements

- TAM7 with CNT06586 Airflow Control (AFC) or later.

Getting Started

Inside the TAM7 control panel, locate J1 on the distribution board (See Fig 1). Connect one side of the 48" harness to the J1 connector and the other end to the CDA.

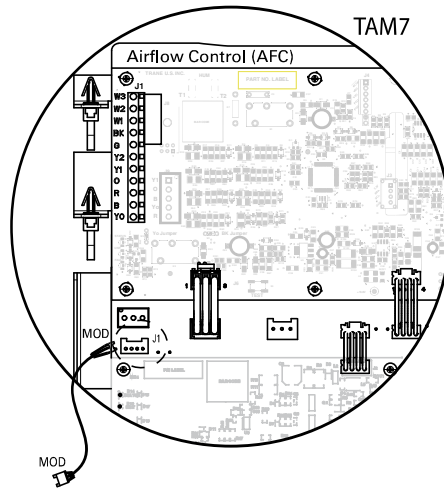
Display Assembly General Notes:

- Home Screen
 - The System status is shown continuously on the Home Screen. The System status will alternate with fault information if there is an active fault. Low level faults do not appear on the Home Screen.

- Technician Screens

- To enter the technician menu section, press the Up/Down menu keys simultaneously for 10 seconds.
- To exit the technician menu section, press the Up/Down menu keys simultaneously for 10 seconds.
- To move to the top of any menu tree, press the Left/Right menu keys simultaneously for 1–2 seconds. Press the Left/Right menu keys a second time for 1–2 seconds to return to the Home Screen.
- While in a technician menu, after 5 minutes of inactivity, the Home Screen will be displayed. this time can be increased to 20 minutes by pressing the Enter menu key for 2–3 seconds.

Figure 1.

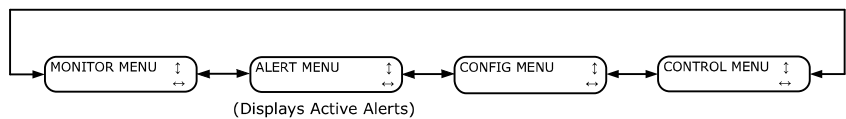


CDA Navigation

Home Screen

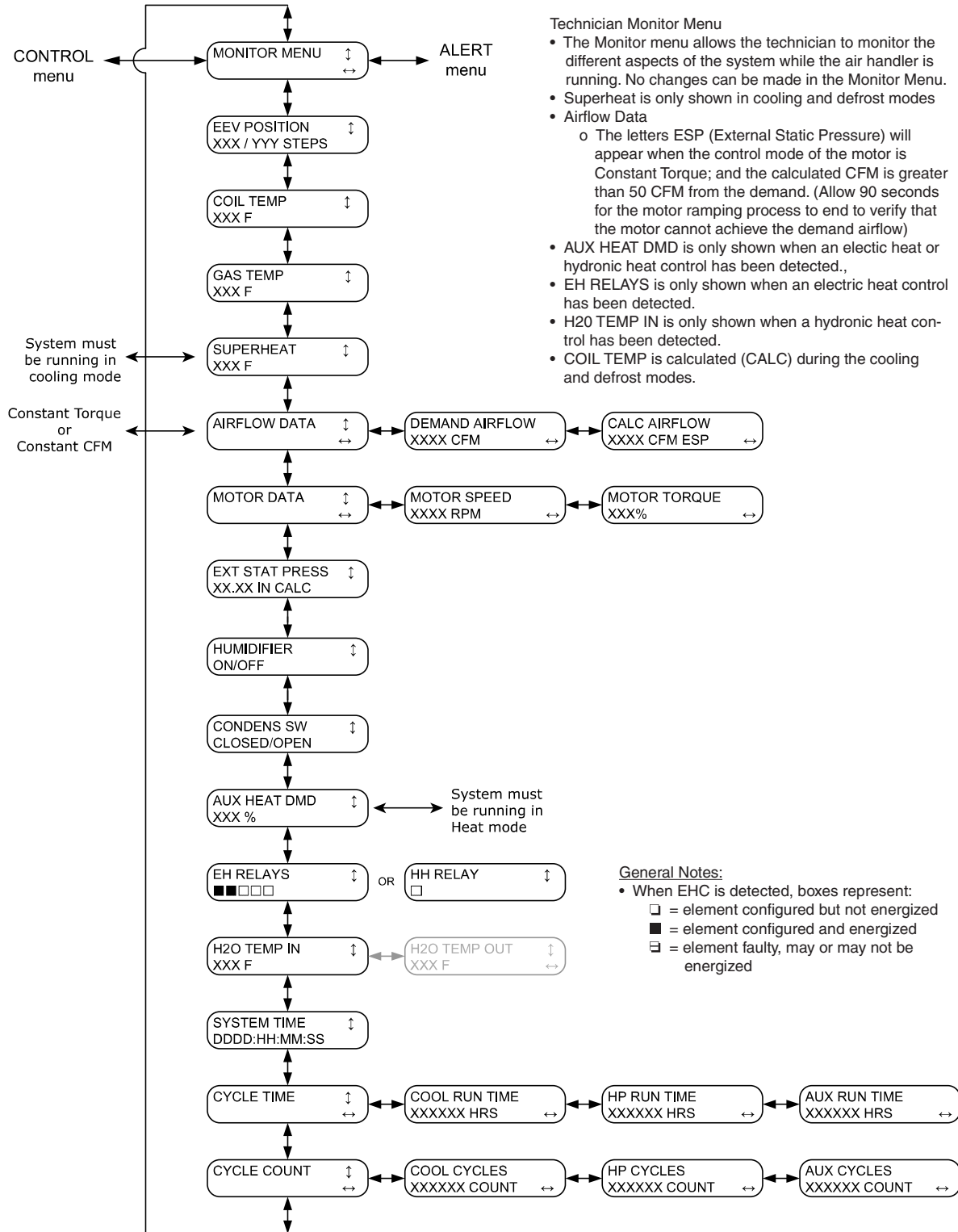


Technician Screen



To toggle between the Home Screen and the Technician Screen menu, press the Up/Down menu keys simultaneously for 10 seconds on the Display ASsembly

Monitor Menu

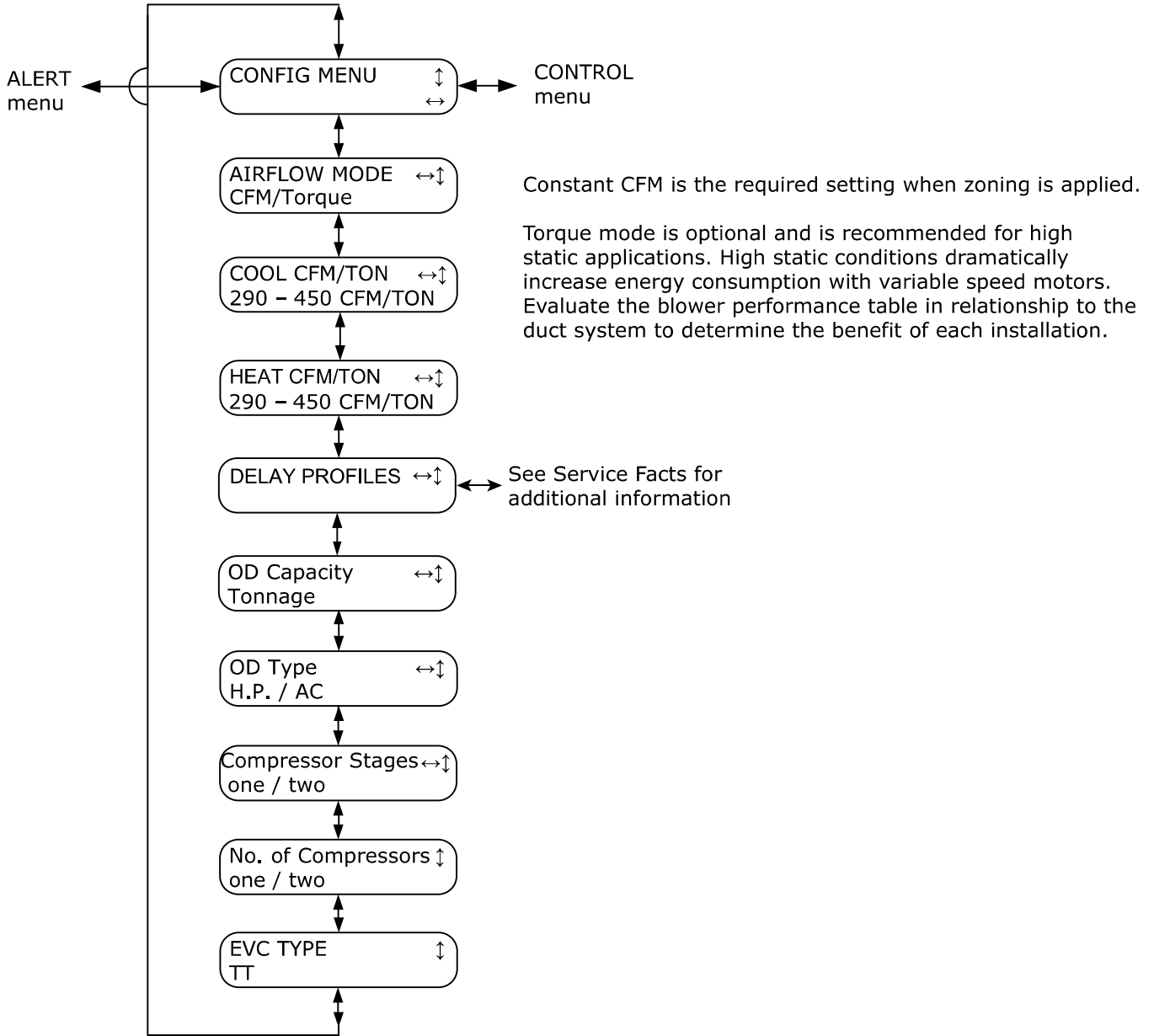


- Technician Monitor Menu**
- The Monitor menu allows the technician to monitor the different aspects of the system while the air handler is running. No changes can be made in the Monitor Menu.
 - Superheat is only shown in cooling and defrost modes
 - Airflow Data
 - The letters ESP (External Static Pressure) will appear when the control mode of the motor is Constant Torque; and the calculated CFM is greater than 50 CFM from the demand. (Allow 90 seconds for the motor ramping process to end to verify that the motor cannot achieve the demand airflow)
 - AUX HEAT DMD is only shown when an electric heat or hydronic heat control has been detected.,
 - EH RELAYS is only shown when an electric heat control has been detected.
 - H2O TEMP IN is only shown when a hydronic heat control has been detected.
 - COIL TEMP is calculated (CALC) during the cooling and defrost modes.

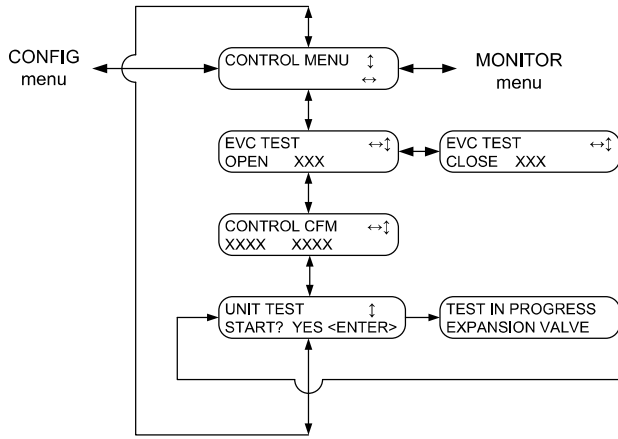
- General Notes:**
- When EHC is detected, boxes represent:
 - = element configured but not energized
 - = element configured and energized
 - ◻ = element faulty, may or may not be energized

Config Menu

The CONFIG MENU reads what has been configured with dip switches S1 and S2.



Control Menu



EVC TEST: Scroll to desired test and push the <enter> key.

- OPEN: When selected, the EEV will drive to the full open position (OPEN 500).
- CLOSE: When selected, the EEV will drive to the closed position (CLOSE 056)

CONTROL CFM: Press <enter> key to initiate control.

- First value is current selection, Second value is actual airflow.
- Use left or right menu keys to decrease or increase airflow in 100 CFM increments.
- Press ENTER to initiate new CFM demand. Actual airflow is updated every 6 seconds.

Note: To exit CONTROL CFM, cycle power to the unit or turn the thermostat to the off position, fan auto. Time delays may allow fan operation for up to three minutes.

UNIT TEST: Press <enter> key to initiate test. (Unit must be in Standby or Idle mode)

- Once test is started, the screen updates automatically and navigation is not allowed.
- UNIT TEST may only be interrupted by a thermostat demand or turning off the power.

The manufacturer optimizes the performance of homes and buildings around the world. A business of Ingersoll Rand, the leader in creating and sustaining safe, comfortable and energy efficient environments, the manufacturer offers a broad portfolio of advanced controls and HVAC systems, comprehensive building services, and parts. For more information, visit www.IRCO.com.

The manufacturer has a policy of continuous product and product data improvements and reserves the right to change design and specifications without notice.

©2015 Trane

034-3462-1A-EN 01 Jan 2015

Supersedes (New)

