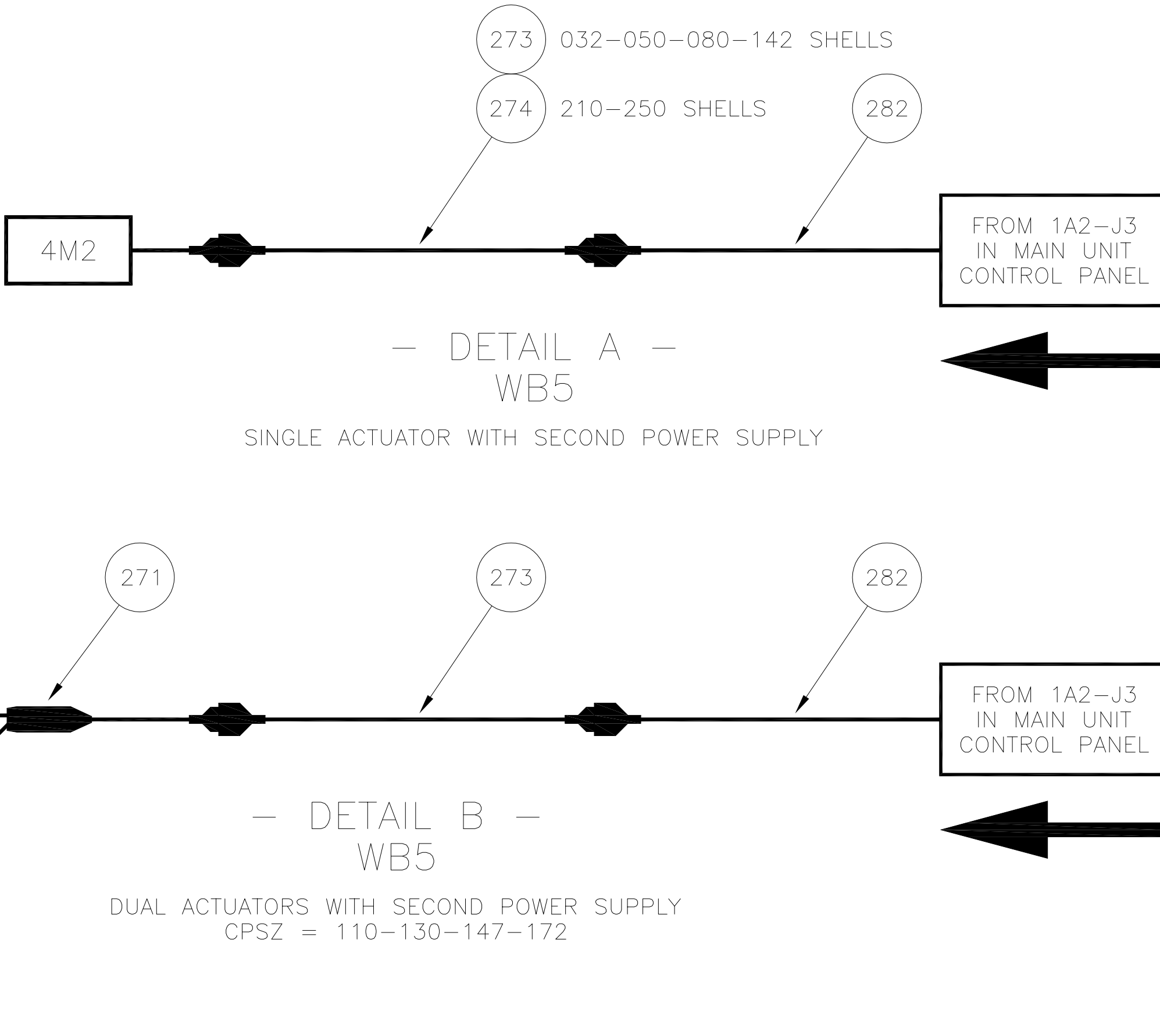
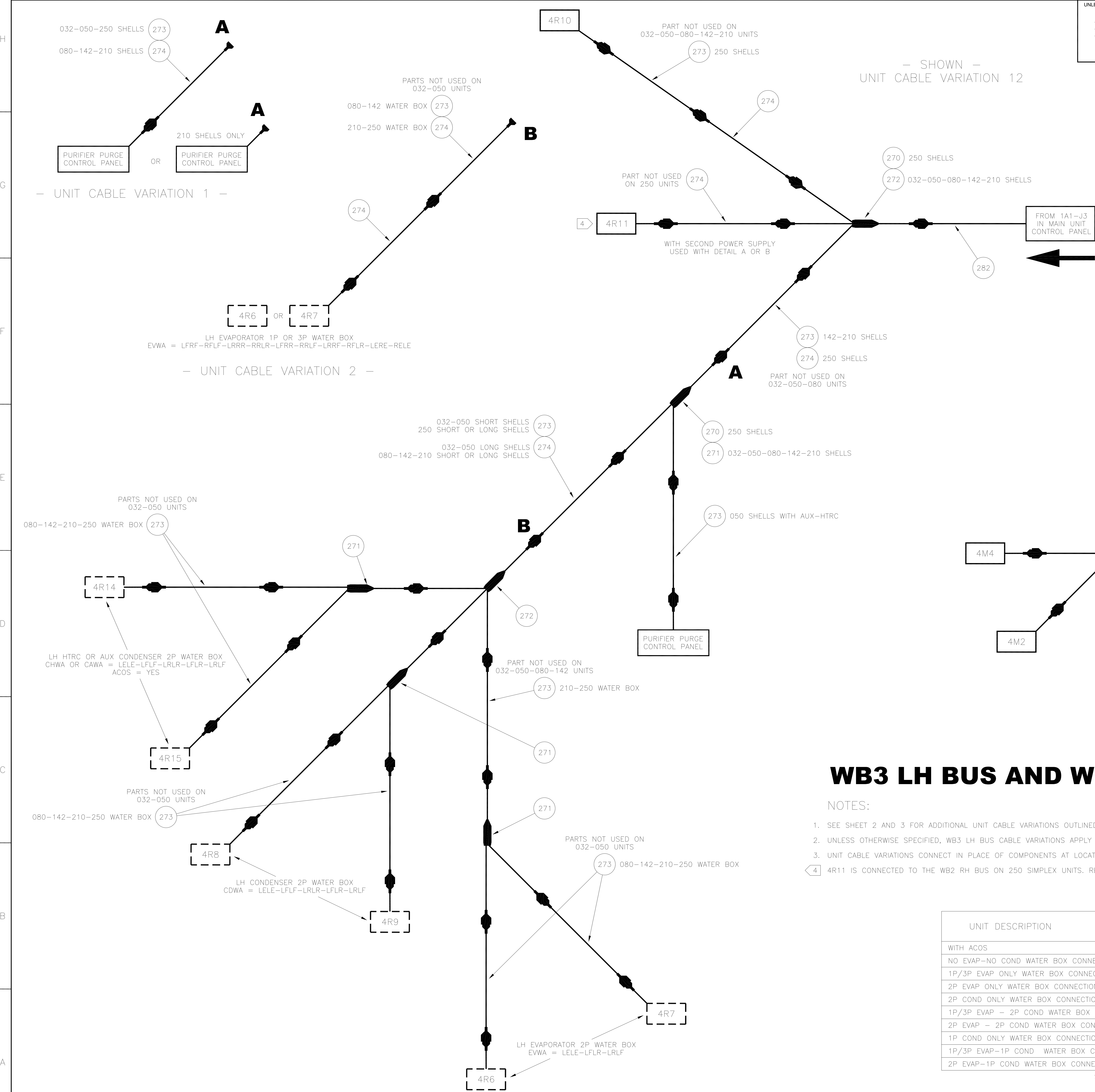


UNLESS OTHERWISE SPECIFIED ALL DIMENSIONS ARE IN INCHES. TOLERANCE:
X = ±
XX = ±
.XXX = ±
ANGLES = ± ° HOLE DIA = ±
CONFORMS TO ASME Y14.5M - 1994

TRANE
A DIVISION OF AMERICAN STANDARD INC.
ALL RIGHTS RESERVED
THIS DRAWING IS PROPRIETARY AND SHALL NOT BE COPIED OR ITS CONTENTS DISCLOSED TO OUTSIDE PARTIES WITHOUT THE WRITTEN CONSENT OF TRANE
DRAWN BY: K.M. KULIG © DATE: 02 NOV 2007
DO NOT SCALE PRINT
THIRD ANGLE PROJECTION

45356268
SHEET 1 OF 3
REV C
WIRING HARNESS
FACTORY CONNECTION
WB3 LH BUS AND WB5
SIMPLEX CENTRAVAC UNITS

DEVICE	DESCRIPTION
4M2	INLET GUIDE VANE FIRST STAGE ACTUATOR
4M4	INLET GUIDE VANE SECOND STAGE ACTUATOR
4R6	EVAPORATOR ENTERING WATER TEMPERATURE SENSOR
4R7	EVAPORATOR LEAVING WATER TEMPERATURE SENSOR
4R8	CONDENSER ENTERING WATER TEMPERATURE SENSOR
4R9	CONDENSER LEAVING WATER TEMPERATURE SENSOR
4R10	EVAPORATOR SATURATED REFRIGERANT TEMPERATURE SENSOR
4R11	CONDENSER SATURATED REFRIGERANT TEMPERATURE SENSOR
4R14	HEAT RECOVERY CONDENSER ENTERING WATER TEMPERATURE SENSOR
4R15	HEAT RECOVERY CONDENSER LEAVING WATER TEMPERATURE SENSOR



WB3 LH BUS AND WB5 UNIT CABLE VARIATIONS

NOTES:

- SEE SHEET 2 AND 3 FOR ADDITIONAL UNIT CABLE VARIATIONS OUTLINED BELOW.
- UNLESS OTHERWISE SPECIFIED, WB3 LH BUS CABLE VARIATIONS APPLY TO ALL 032 THRU 250 SIMPLEX SHELL COMBINATIONS AND MAR/NMAR WATER BOX COMBINATIONS.
- UNIT CABLE VARIATIONS CONNECT IN PLACE OF COMPONENTS AT LOCATIONS LABELED A AND B, SHOWN IN VARIATION 12 ABOVE.

4R11 IS CONNECTED TO THE WB2 RH BUS ON 250 SIMPLEX UNITS. REFER TO DRAWING 4535-6267.

UNIT DESCRIPTION	VARIATION >>	LH BUS — UNIT CABLE VARIATION																	
		1	2	3	4	5	6	7	8	9	10	11	12	13	14	15	16	17	18
WITH ACOS								X	X	X	X	X	X				X	X	X
NO EVAP-NO COND WATER BOX CONNECTIONS		X						X											
1P/3P EVAP ONLY WATER BOX CONNECTION			X						X										
2P EVAP ONLY WATER BOX CONNECTIONS				X						X									
2P COND ONLY WATER BOX CONNECTIONS					X						X								
1P/3P EVAP — 2P COND WATER BOX CONNECTIONS						X						X							
2P EVAP — 2P COND WATER BOX CONNECTIONS							X						X						
1P COND ONLY WATER BOX CONNECTION														X			X		
1P/3P EVAP-1P COND WATER BOX CONNECTION															X			X	
2P EVAP-1P COND WATER BOX CONNECTION																X			X
SEE SHEET >>		1	1	2	2	2	2	2	2	2	2	2	2	3	3	3	3	3	3

