

TRANE

THIS DRAWING IS PROPRIETARY AND SHALL NOT BE REPRODUCED OR ITS CONTENTS DISCLOSED TO OUTSIDE PARTIES WITHOUT THE WRITTEN CONSENT OF TRANE

DRAWN BY: K.M. KULIG ©TRANE DATE:02 NOV 2007

REPLACES: 4535-6267 REV C

REVISION DATE: 15APR2011

SIMILIAR TO: 4535-6269

4535-6267

SHEET 1 OF 5

REV D

WIRING HARNESS

FACTORY CONNECTION

WB2 RH BUS AND WB16

SIMPLEX CENTRAVAC UNITS

NOTES:

1. SEE SHEET 2, 3, 4, AND 5 FOR ADDITIONAL UNIT CABLE VARIATIONS OUTLINED ABOVE.

2. UNLESS OTHERWISE SPECIFIED, WB2 RH BUS CABLE VARIATIONS APPLY TO ALL 032 THRU 250 SIMPLEX SHELL COMBINATIONS AND MAR/NMAR WATER BOX COMBINATIONS.

3. STARTER AND UNIT CABLE VARIATIONS CONNECT IN PLACE OF COMPONENTS AT LOCATIONS LABELED A THRU E, SHOWN IN VARIATION 24 BELOW.

4 4R11 IS CONNECTED TO THE WB3 LH BUS ON 032-050-080-142-210 SIMPLEX UNITS. REFER TO DRAWING 4535-6268.

4R1 INBOARD BEARING TEMPERATURE SENSOR

4R2 OUTBOARD BEARING TEMPERATURE SENSOR

4R3 OIL PUMP DISCHARGE PRESSURE TRANSDUCER

4R4 OIL TANK PRESSURE TRANSDUCER

4R5 OIL TANK TEMPERATURE SENSOR

4R6 EVAPORATOR ENTERING WATER TEMPERATURE SENSOR

4R7 EVAPORATOR LEAVING WATER TEMPERATURE SENSOR

4R8 CONDENSER ENTERING WATER TEMPERATURE SENSOR

4R9 CONDENSER LEAVING WATER TEMPERATURE SENSOR

4R11 CONDENSER SATURATED REFRIGERANT TEMPERATURE SENSOR

4R14 HTRC OR AUX CONDENSER ENTERING WATER TEMPERATURE SENSOR

4R15 HTRC OR AUX CONDENSER LEAVING WATER TEMPERATURE SENSOR

4R16 COMPRESSOR DISCHARGE REFRIGERANT TEMPERATURE SENSOR

UNIT CABLE VARIATION 1

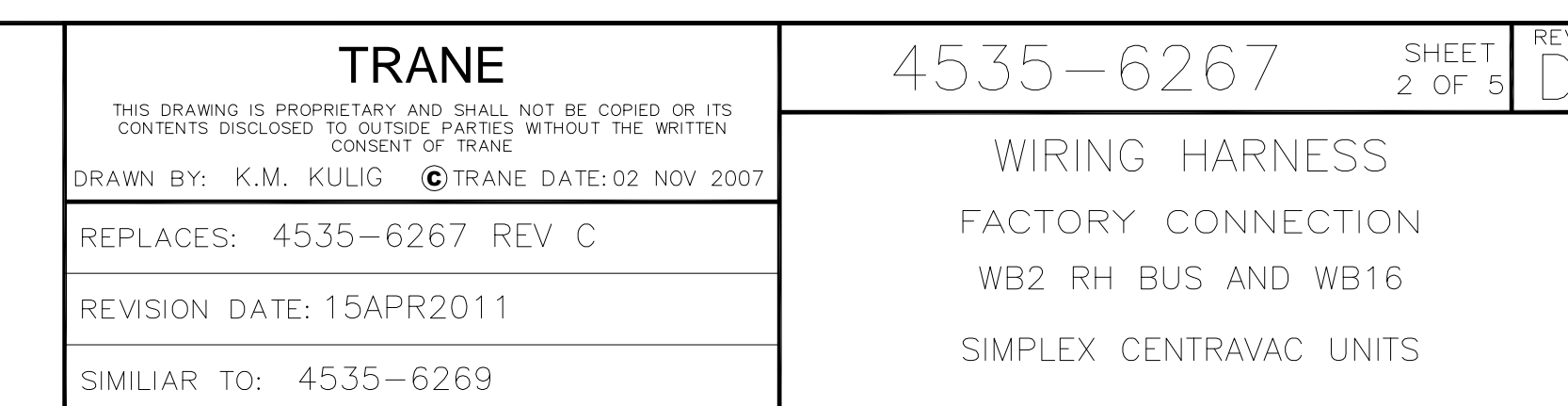
UNIT CABLE VARIATION 7

STARTER CABLE VARIATION 2 OR 4

STARTER CABLE VARIATION 3

WB16

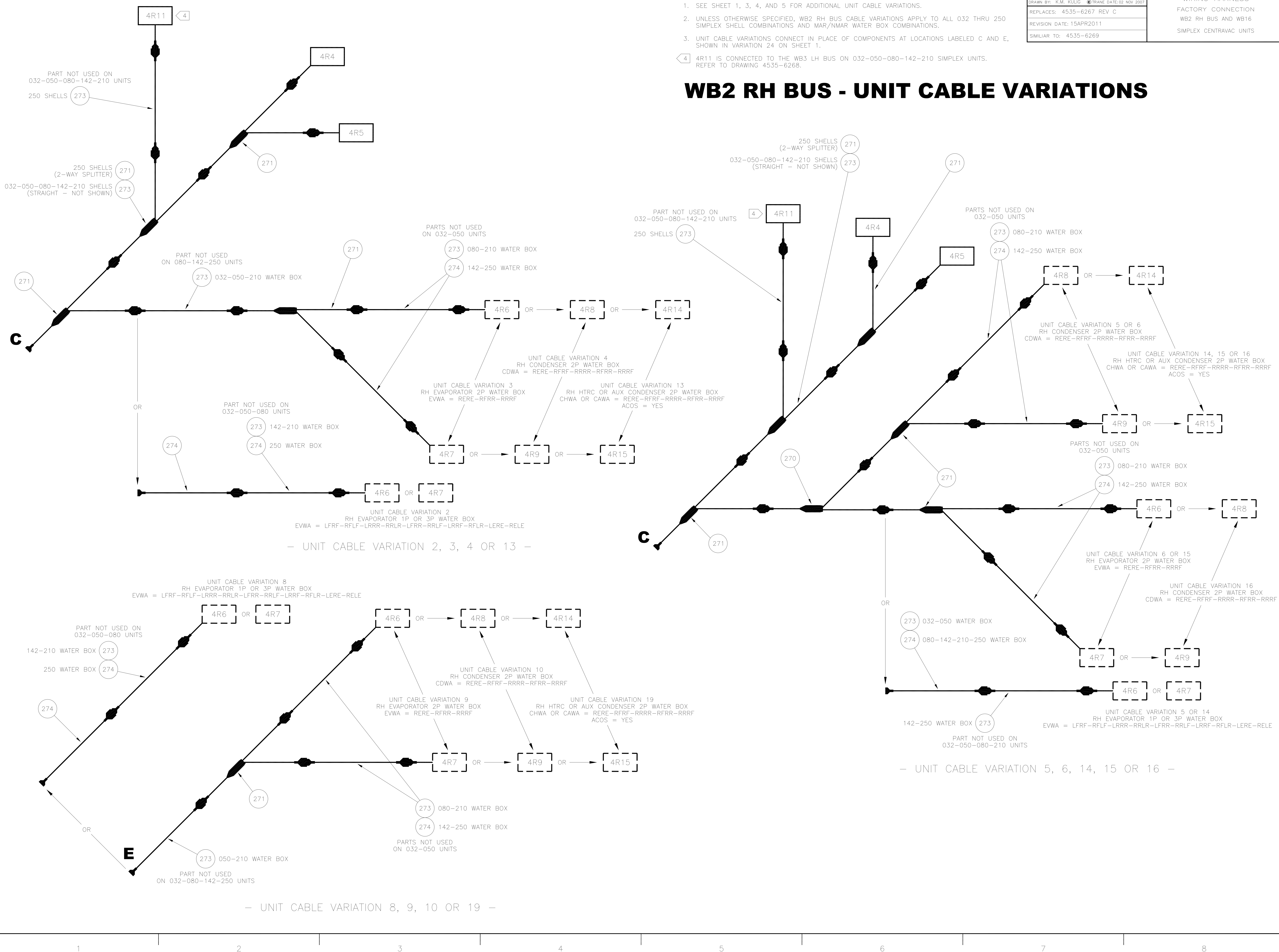
WB2 RH BUS AND WB16 UNIT CABLE VARIATIONS

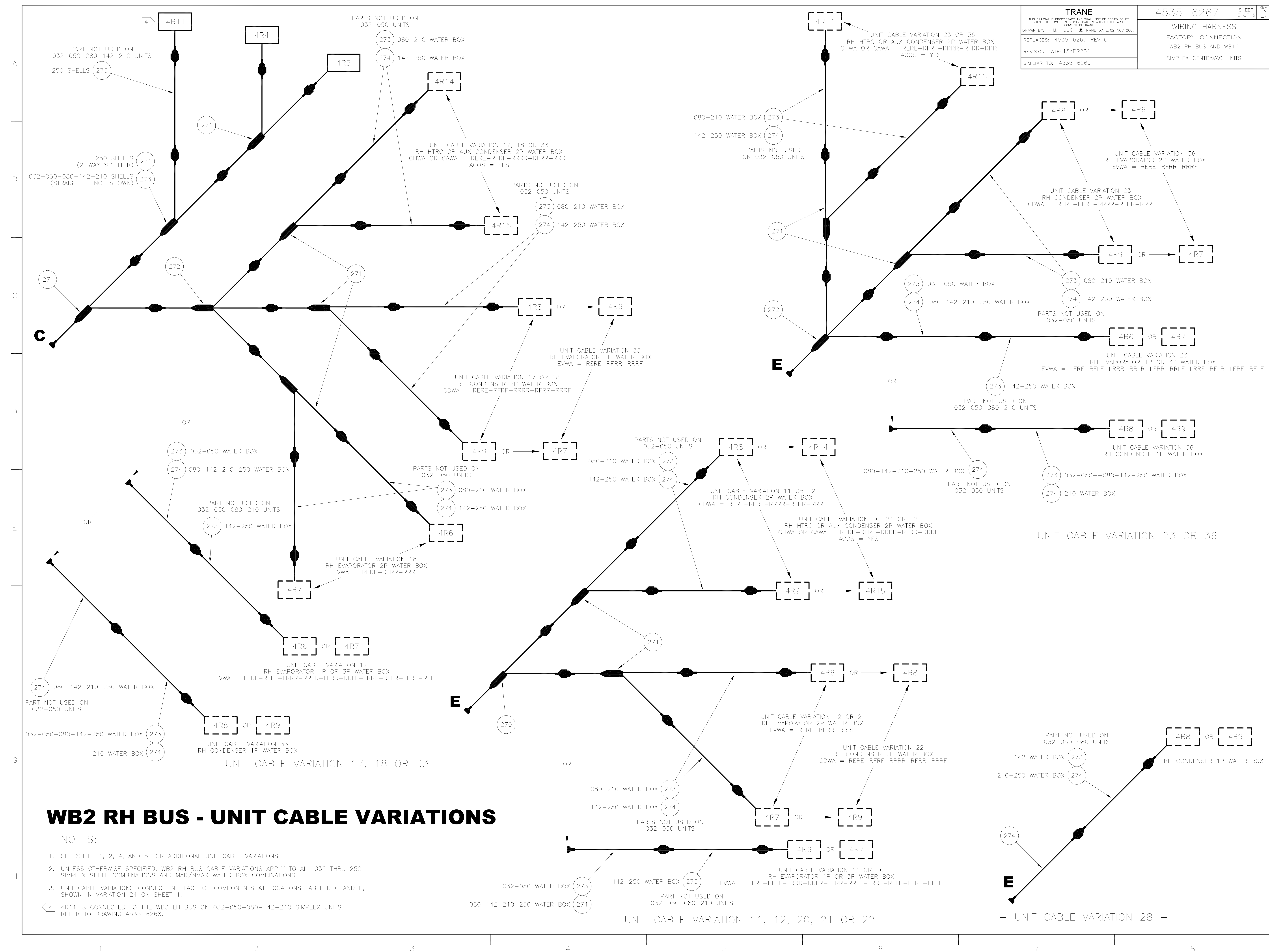


NOTES:

1. SEE SHEET 1, 3, 4, AND 5 FOR ADDITIONAL UNIT CABLE VARIATIONS.
  2. UNLESS OTHERWISE SPECIFIED, WB2 RH BUS CABLE VARIATIONS APPLY TO ALL 032 THRU 250 SIMPLEX SHELL COMBINATIONS AND MAR/MMAR WATER BOX COMBINATIONS.
  3. UNIT CABLE VARIATIONS CONNECT IN PLACE OF COMPONENTS AT LOCATIONS LABELED C AND E, SHOWN IN VARIATION 24 ON SHEET 1.
- 4
- 4R11 IS CONNECTED TO THE WB3 LH BUS ON 032-050-080-142-210 SIMPLEX UNITS.  
REFER TO DRAWING 4535-6268.

## WB2 RH BUS - UNIT CABLE VARIATIONS





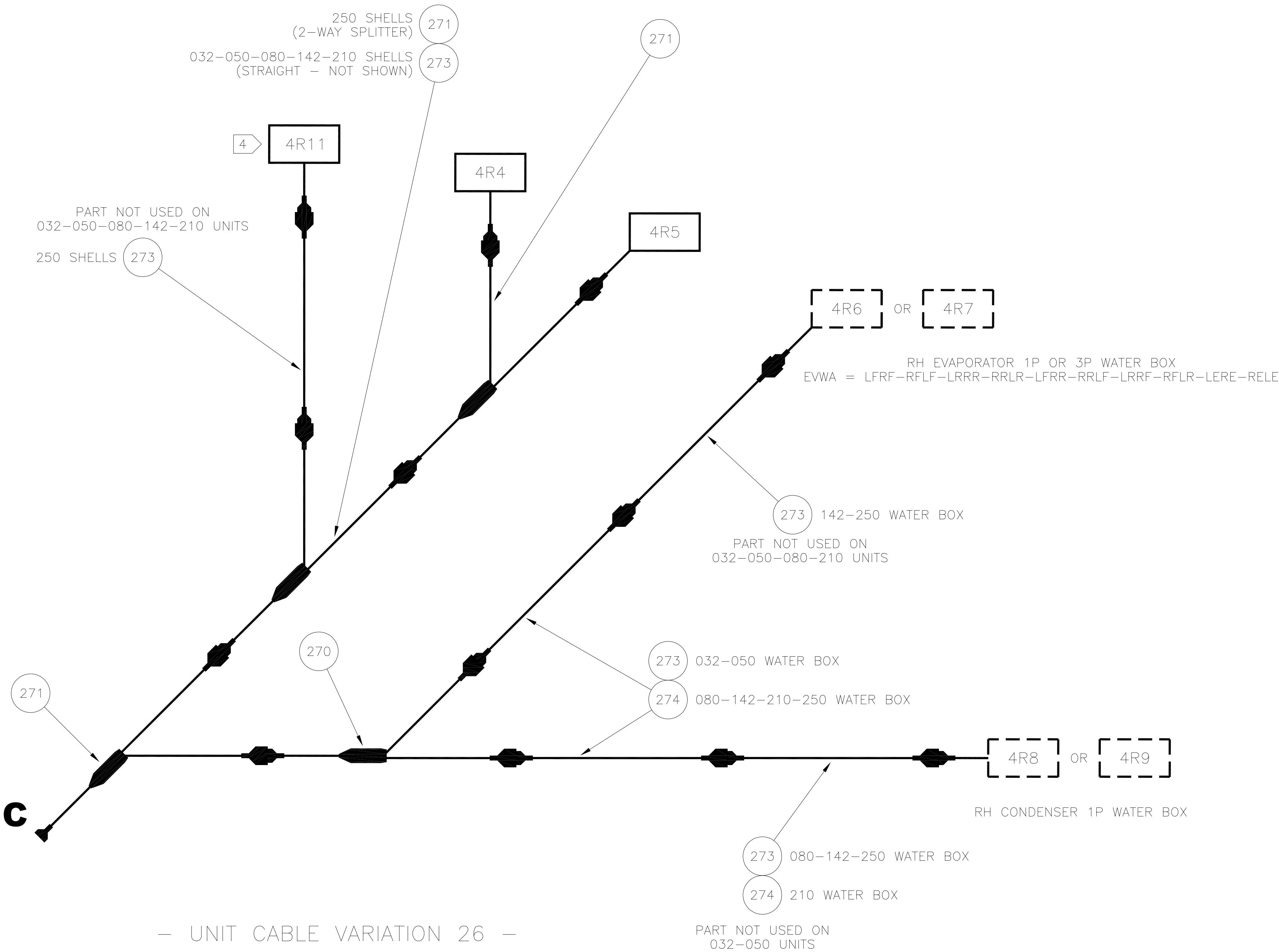
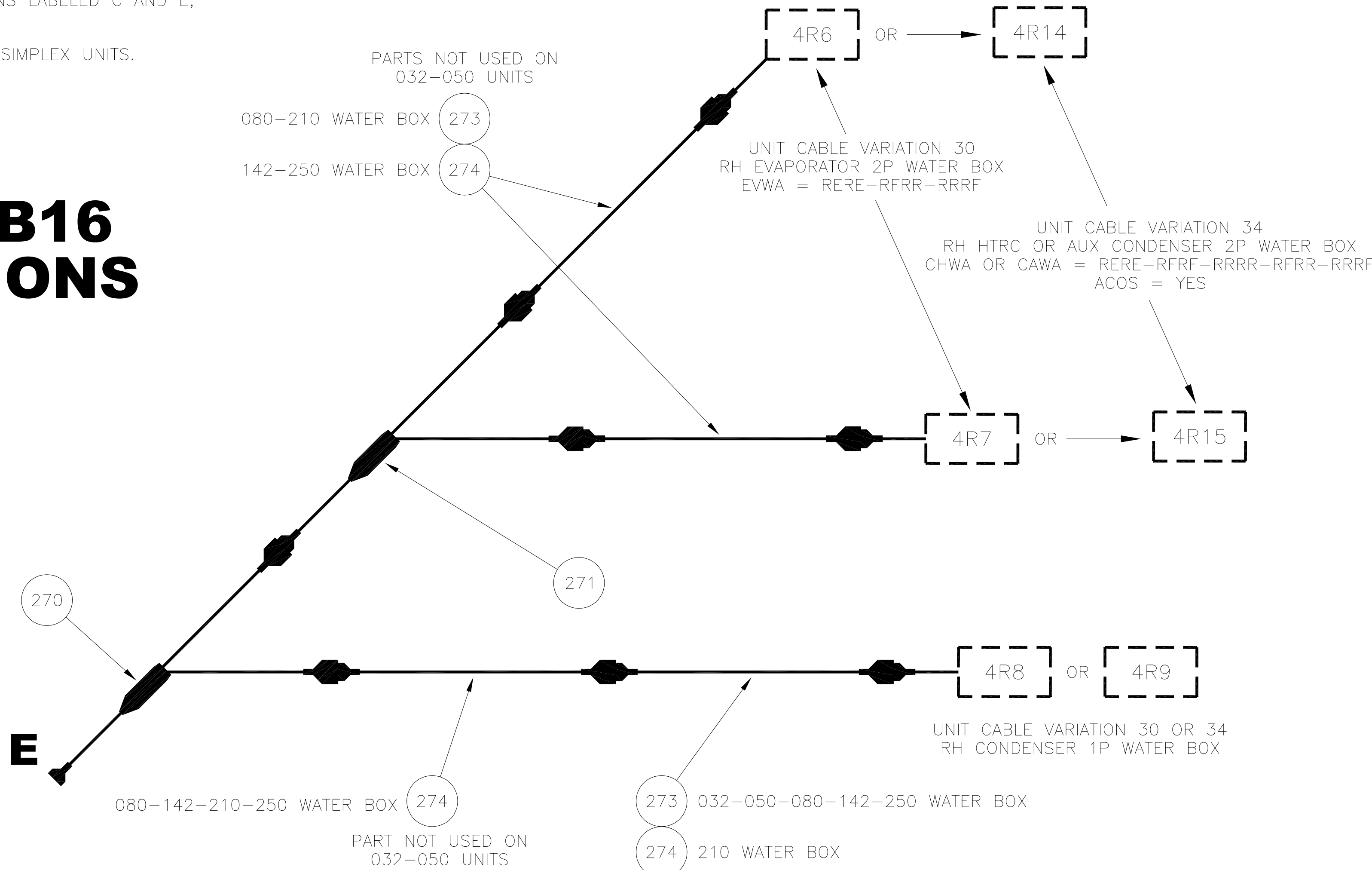
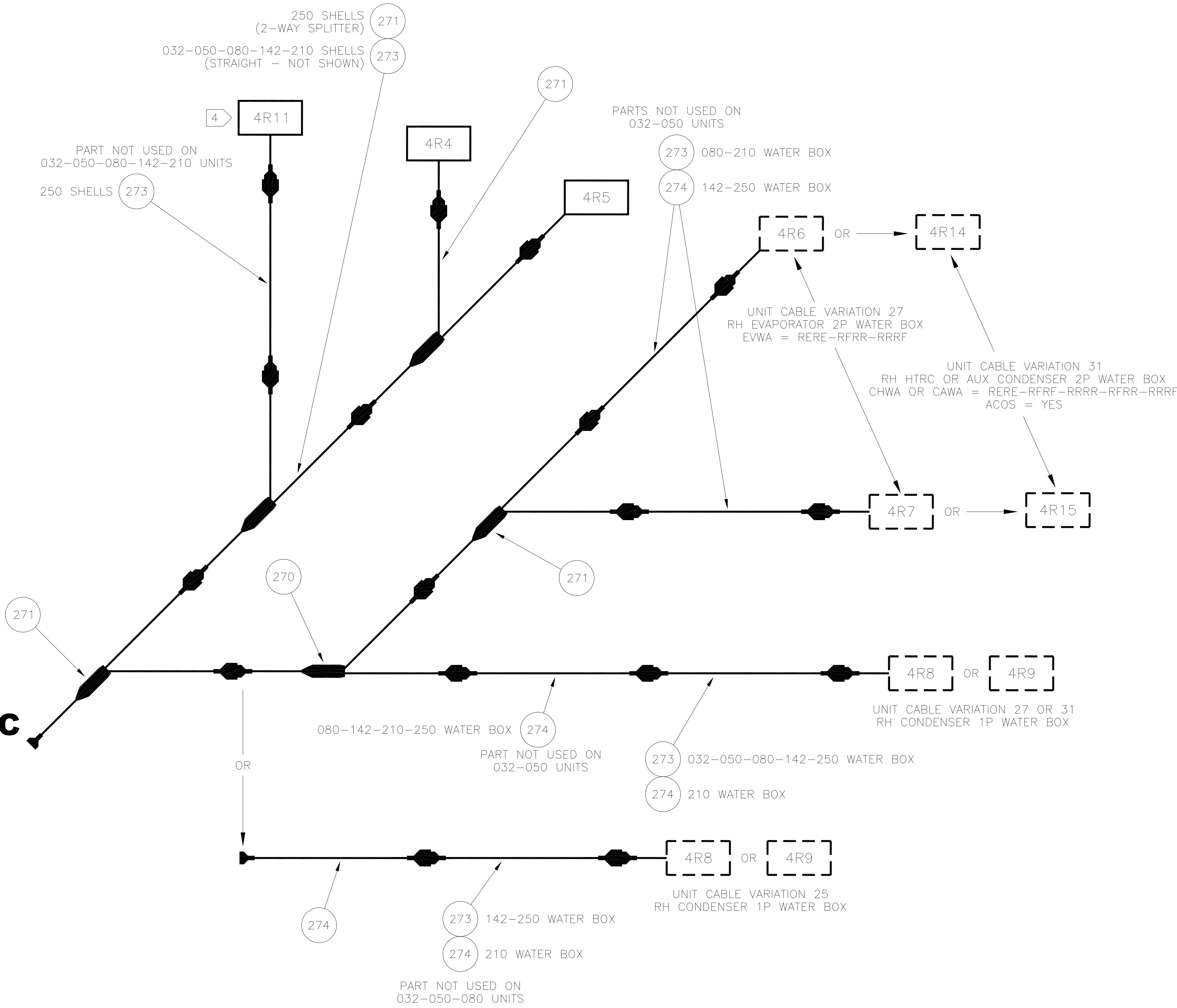
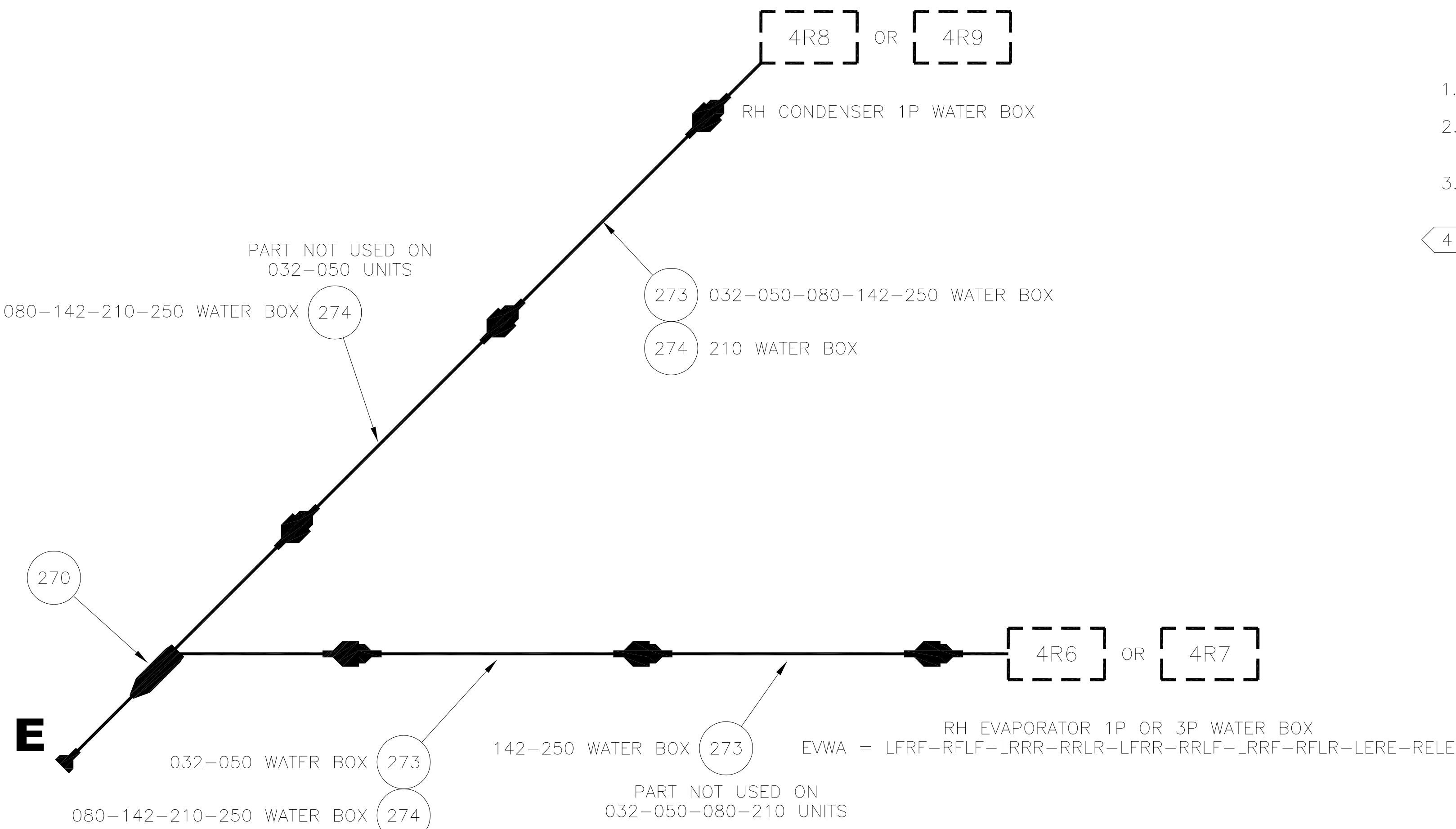


THIS DRAWING IS PROPRIETARY AND SHALL NOT BE REPRODUCED OR ITS CONTENTS DISCLOSED TO OUTSIDE PARTIES WITHOUT THE WRITTEN CONSENT OF TRANE. DRAWN BY: K.M. KULIG ©TRANE DATE:02 NOV 2007	4535-6267		SHEET	REV
			4 OF 5	D
	WIRING HARNESS			
	FACTORY CONNECTION			
	WB2 RH BUS AND WB16			
REPLACES: 4535-6267 REV C				
REVISION DATE: 15APR2011				
SIMILIAR TO: 4535-6269				

NOTES:

- SEE SHEET 1, 2, 3, AND 5 FOR ADDITIONAL UNIT CABLE VARIATIONS.
  - UNLESS OTHERWISE SPECIFIED, WB2 RH BUS CABLE VARIATIONS APPLY TO ALL 032 THRU 250 SIMPLEX SHELL COMBINATIONS AND MAR/NMAR WATER BOX COMBINATIONS.
  - UNIT CABLE VARIATIONS CONNECT IN PLACE OF COMPONENTS AT LOCATIONS LABELED C AND E, SHOWN IN VARIATION 24 ON SHEET 1.
- 4 4R11 IS CONNECTED TO THE WB3 LH BUS ON 032-050-080-142-210 SIMPLEX UNITS. REFER TO DRAWING 4535-6268.

WB2 RH BUS AND WB16  
UNIT CABLE VARIATIONS



1. SEE SHEET 1, 2, 3, AND 4 FOR ADDITIONAL UNIT CABLE VARIATIONS.
2. UNLESS OTHERWISE SPECIFIED, WB2 RH BUS CABLE VARIATIONS APPLY TO ALL Q32 THRU 250 SIMPLEX SHELL COMBINATIONS AND MAR/NMAR WATER BOX COMBINATIONS.
3. UNIT CABLE VARIATIONS CONNECT IN PLACE OF COMPONENTS AT LOCATIONS LABELED C AND E, SHOWN IN VARIATION 24 ON SHEET 1.

4 4R11 IS CONNECTED TO THE WB3 LH BUS ON 032-050-080-142-210 SIMPLEX UNITS.  
REFER TO DRAWING 4535-6268.

<p><b>TRANE</b></p> <p>THIS DRAWING IS HEREBY MADE A PUBLIC DOCUMENT. IT SHALL NOT BE COPIED OR ITS CONTENTS DISCLOSED TO OUTSIDE PARTIES WITHOUT THE WRITTEN CONSENT OF TRANE.</p> <p>DRAWN BY: K.M. KULIC © TRANE DATE: 02 NOV 2007</p>	<p>4535-6267</p> <p>SHEET 5 OF 5</p> <p>REV D</p>
<p>REPLACES: 4535-6267 REV C</p>	<p>WIRING HARNESS</p>
<p>REVISION DATE: 15APR2011</p>	<p>FACTORY CONNECTION</p>
<p>SIMILAR: TO: 4535-6269</p>	<p>WB2 RH BUS AND WB16</p>
	<p>SIMPLEX CENTRAVAC UNITS</p>

## WB2 RH BUS AND WB16 UNIT CABLE VARIATIONS

