

UNLESS OTHERWISE SPECIFIED ALL DIMENSIONS ARE IN INCHES. TOLERANCE:

.X = ±
 .XX = ±
 .XXX = ±

FINISH ✓

ANGLES = ± ° HOLE DIA = ±

CONFORMS TO ASME Y14.5M-1994.

TRANE

THIS DRAWING IS PROPRIETARY AND SHALL NOT BE COPIED OR ITS CONTENTS DISCLOSED TO OUTSIDE PARTIES WITHOUT THE WRITTEN CONSENT OF TRANE

DRAWN BY: M. BARBEE ©TRANE DATE: 08/14/09

DO NOT SCALE PRINT

THIRD ANGLE PROJECTION

4367-3651

SHEET 1 OF 1 REV B

DIAGRAM HOOKUP

NOTES:

- 1 THE LIQUID SENSOR IS MOUNTED AT THE LIQUID LINE SERVICE VALVE IN THE CONDENSER.
- 2 THE AMBIENT SENSOR IS MOUNTED WITH A POP-IN WIRE TIE INSIDE A METAL BRACKET WHICH IS MOUNTED TO THE CENTER DIVIDER PANEL. SEE FIG. 2
3. ROUTE WIRES THROUGH BUSHINGS NEXT TO THE CONTROL BOARD MOUNTING LOCATIONS INSIDE THE CONTROL BOX. SEE FIG. 1
4. ALL CONTROL WIRING MUST BE A MINIMUM OF 18 AWG 600V 105°C UL1230.
5. BUNDLE AND DRESS EXCESS WIRE AWAY FROM SHARP EDGES AND HOT COPPER TUBING WITH WIRE TIES (INCLUDED).
6. SEE INSTALLERS GUIDE FOR BAYLOAMU02 FOR COMPLETE LOW AMBIENT ACCESSORY INSTALLATION INSTRUCTIONS.
- 7 REMOVE JUMPER FROM FTB1/FTB2

<p>WARNING HAZARDOUS VOLTAGE!</p> <p>DISCONNECT ALL ELECTRIC POWER INCLUDING REMOTE DISCONNECTS AND FOLLOW LOCK OUT AND TAG PROCEDURES BEFORE SERVICING. INSURE THAT ALL MOTOR CAPACITORS HAVE DISCHARGED STORED VOLTAGE. UNITS WITH VARIABLE SPEED DRIVE, REFER TO DRIVE INSTRUCTIONS FOR CAPACITOR DISCHARGE.</p> <p>FAILURE TO DO THE ABOVE BEFORE SERVICING COULD RESULT IN DEATH OR SERIOUS INJURY.</p>	<p>AVERTISSEMENT TENSION DANGEREUSE!</p> <p>COUPER TOUTES LES TENSIONS ET OUVRIR LES SECTIONNEURS A DISTANCE. PUIS SUIVRE LES PROCEDURES DE VERROUILLAGE ET DES ETIQUETTES AVANT TOUTE INTERVENTION. VERIFIER QUE TOUTS LES CONDENSATEURS DES MOTEURS SONT DECHARGES. DANS LE CAS D'UNITES COMPORTANT DES ENTRAINEMENTS A VITESSE VARIABLE, SE REPORTER AUX INSTRUCTIONS DE L'ENTRAINEMENT POUR DECHARGER LES CONDENSATEURS.</p> <p>NE PAS RESPECTER CES MESURES DE PRECAUTION PEUT ENTRAÎNER DES BLESSURES GRAVES POUVANT ETRE MORTELLES.</p>	<p>ADVERTENCIA ¡VOLTAJE PELIGROSO!</p> <p>DESCONECTE TODA LA ENERGIA ELECTRICA, INCLUIDO LAS DESCONEXIONES REMOTAS Y SIGA LOS PROCEDIMIENTOS DE CIERRE Y ETIQUETADO ANTES DE PROCEDER AL SERVICIO. ASEGURESE DE QUE TODOS LOS CAPACITORES DEL MOTOR HAYAN DESCARGADO EL VOLTAJE ALMACENADO. PARA LAS UNIDADES CON EJE DE DIRECCION DE VELOCIDAD VARIABLE, CONSULTE LAS INSTRUCCIONES PARA LA DESCARGA DEL CONDENSADOR.</p> <p>EL NO REALIZAR LO ANTERIORMENTE INDICADO, PODRIA OCASIONAR LA MUERTE O SERIAS LESIONES PERSONALES.</p>
---	---	---

DEVICE	DESCRIPTION
CF	FAN MOTOR CAPACITOR
FTB	FAN TERMINAL BOARD
LTB	LOW VOLTAGE TERMINAL BOARD
ODM	OUTDOOR FAN MOTOR
ODF	OUTDOOR FAN RELAY
HPK	HEAD PRESSURE CONTROL

WIRE COLOR DESIGNATION			
ABBR	COLOR	ABBR	COLOR
BK	BLACK	PR	PURPLE
BL	BLUE	RD	RED
BR	BROWN	WH	WHITE
GR	GREEN	YL	YELLOW
OR	ORANGE		

BAYLOAMU02 (TTA ELECTRO-MECHANICAL)

— FACTORY UNIT WIRING
 - - - FIELD ACCESSORY WIRING

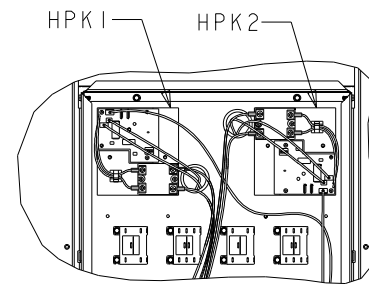


FIGURE 1

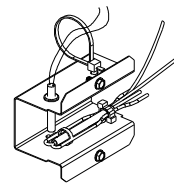
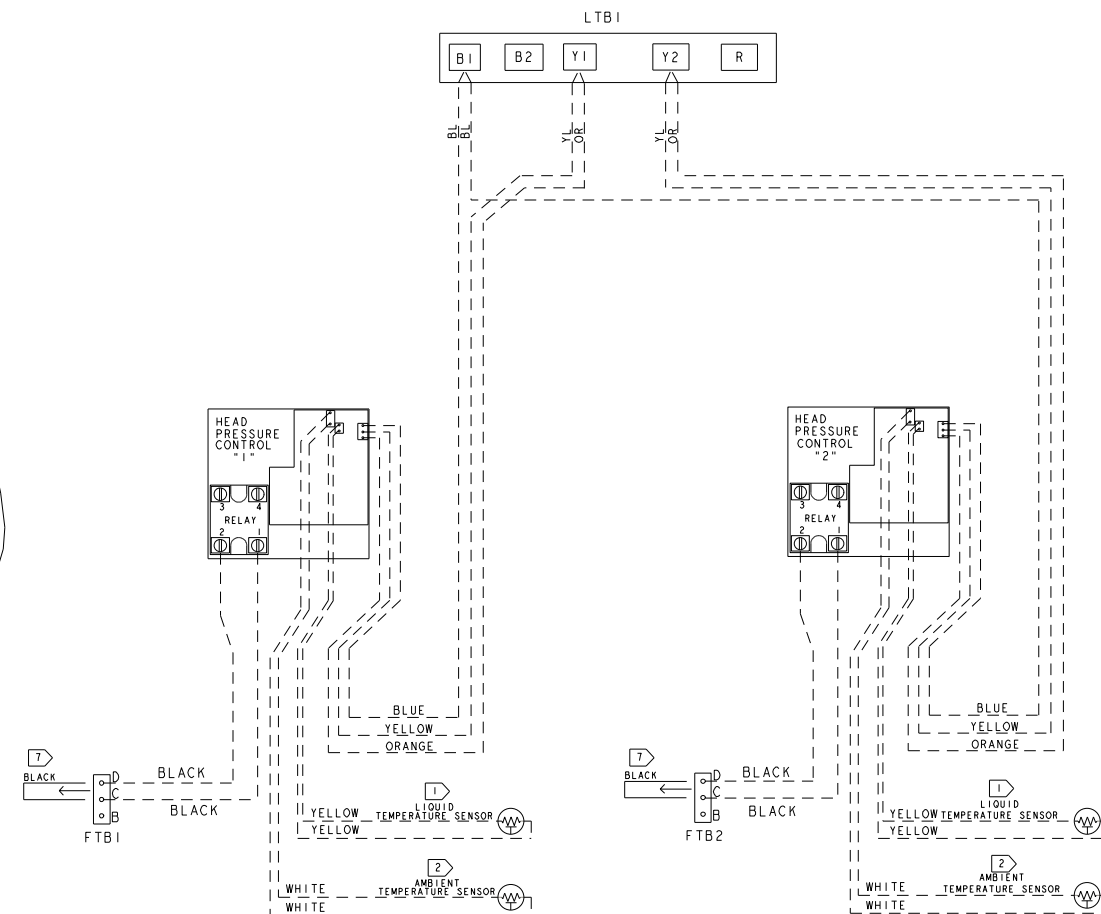


FIGURE 2



PRINTED FROM 4367-3651 REV B

MATERIAL:
 FLEXCON WHITE VINYL (2 MIL THICK) WITH PRESSURE SENSITIVE ADHESIVE BACKING AND RELEASE PAPER. ADHESIVE FOR OUTDOOR APPLICATION ON PAINTED OR GALVANIZED METAL.
 SIZE: 8-1/2 X 11
 ALL PRINTING TO BE BLACK. TRANE CO. TO FURNISH PRINTER WITH ELECTRONIC FILE OF THIS DRAWING IN THE PRINTER DESIRED FORMAT. WIRING DIAGRAMS TO BE SUPPLIED AS INDIVIDUAL SHEETS PER SIZE ABOVE.