

- ALL WIRING AND DEVICES SHOWN DASHED TO BE SUPPLIED AND INSTALLED BY THE CUSTOMER IN ACCORDANCE WITH LOCAL AND NATIONAL ELECTRICAL CODES. PHANTOM LINE ENCLOSURES INDICATE ALTERNATE CIRCUITRY OR AVAILABLE SALES OPTIONS.
- IF ANY OF THE ORIGINAL WIRES, AS SUPPLIED WITH THIS UNIT, MUST BE REPLACED, REPLACE WITH APPLIANCE WIRING MATERIAL RATED AT 105°C.
- THREE PHASE MOTORS ARE PROTECTED UNDER PRIMARY SINGLE PHASING CONDITIONS. ALL MOTORS HAVE INTERNAL OVERLOAD PROTECTION. COMPRESSORS HAVE INTERNAL THERMAL PROTECTION.
- CONNECTIONS SHOWN ARE FOR 208V/60HZ/3PH OPERATION. WHEN 230V/60HZ/3PH OPERATION IS REQUIRED, MOVE WIRE W4 FROM TNS1-208V TO TNS1-230V.
- PINS COM AND VT ON MMC ARE FOR IDM RPM INDICATION 0-10V.
- CONNECTIONS SHOWN ARE FOR DUAL-STAGE GAS HEAT OPERATION. WHEN SINGLE-STAGE GAS HEAT OPERATION IS REQUIRED, WIRE 21A IS NOT CONNECTED TO IGN. ALSO, REMOVE WIRE 123B FROM GV. ALSO, CUT AND ISOLATE WIRE 129A. WIRE IND-PUR IS NOT PRESENT ON A SINGLE-STAGE GAS HEAT UNIT.
- CCH2 LEADS ARE BLACK WITH BROWN TAPE WRAPPED AROUND THE END OF EACH LEAD.
- CONNECTIONS SHOWN INCLUDE OPTIONAL ECA, RTOM, AND COMM. IF NEITHER ECA NOR RTOM ARE INSTALLED, DO NOT CONNECT PLUG 3P4 TO ANYTHING. IF ECA AND/OR RTOM ARE INSTALLED WITHOUT COMM, CONNECT PLUG 3P4 TO RTRM-3J4. IF ECA IS INSTALLED WITHOUT RTOM, CONNECT PLUG 5P2 TO PPF-OPTN. REFER TO ACCOMPANYING LITERATURE FOR PROPER CONNECTION/COMBINATION OF OPTIONAL COMPONENTS.
- TO DISABLE THE COMPRESSORS, REMOVE THE JUMPERS ON LTB1 BETWEEN PINS 1 & 2 AND PINS 3 & 4 AND CONNECT FIELD SUPPLIED CONTROL DEVICE.
- TO SHUT DOWN THE UNIT FOR EMERGENCY STOP, REMOVE THE JUMPER ON LTB1 BETWEEN PINS 5 & 6 AND CONNECT FIELD SUPPLIED CONTROL DEVICE OR INSTALL OPTIONAL FIRESTAT.
- INSTALL OPTIONAL REMOTE SENSOR (NOT SHOWN) TO PINS S1 AND S2 (NOT SHOWN) WHEN REQUIRED. SEE PROGRAMMABLE ZONE SENSOR/REMOTE PANEL WITH NIGHT SETBACK LITERATURE FOR CORRECT SETTINGS.
- TO ENABLE SUPPLY AIR TEMPERING, REMOVE PLUG 5P3.
- REQUIRED FOR OPTIONAL REFERENCE ENTHALPY CONTROL.
- REQUIRED FOR OPTIONAL COMPARATIVE ENTHALPY CONTROL.
- OPTIONAL MAS, RAS, RHS, OHS, AND ASSOCIATED WIRING ARE NOT USED WITH MOTORIZED OUTSIDE AIR DAMPER.
- TO ENABLE LEAD/LAG, CUT AND ISOLATE WIRE 101PP.

WARNING
HAZARDOUS VOLTAGE!
DISCONNECT ALL ELECTRIC POWER INCLUDING REMOTE DISCONNECTS AND FOLLOW LOCK OUT AND TAG PROCEDURES BEFORE SERVICING. INSURE THAT ALL MOTOR CAPACITORS HAVE DISCHARGED STORED VOLTAGE. UNITS WITH VARIABLE SPEED DRIVE, REFER TO DRIVE INSTRUCTIONS FOR CAPACITOR DISCHARGE.

AVERTISSEMENT
TENSION DANGEREUSE!
COUPER TOUTES LES TENSIONS ET OUVRIER LES SECTIONNEURS A DISTANCE. PUIS SUIVRE LES PROCEDURES DE VERROUILLAGE ET DES ETIQUETTES AVANT TOUTE INTERVENTION. VERIFIER QUE TOUTS LES CONDENSATEURS DES MOTEURS SONT DECHARGES. DANS LE CAS D'UNITES COMPORTANT DES ENTRAINEMENTS A VITESSE VARIABLE, SE REPORTER AUX INSTRUCTIONS DE L'ENTRAINEMENT POUR DECHARGER LES CONDENSATEURS.

ADVERTENCIA
¡VOLTAJE PELIGROSO!
DESCONECTE TODA LA ENERGIA ELÉCTRICA, INCLUIDO LAS DESCONEXIONES REMOTAS Y SIGA LOS PROCEDIMIENTOS DE CIERRE Y ETIQUETADO ANTES DE PROCEDER AL SERVICIO. ASEGURESE DE QUE TODOS LOS CONDENSADORES DEL MOTOR HAYAN DESCARGADO EL VOLTAJE ALMACENADO. PARA LAS UNIDADES CON EJE DE DIRECCION DE VELOCIDAD VARIABLE, CONSULTE LAS INSTRUCCIONES PARA LA DESCARGA DEL CONDENSADOR.

FAILURE TO DO THE ABOVE BEFORE SERVICING COULD RESULT IN DEATH OR SERIOUS INJURY.
NE PAS RESPECTER CES MESURES DE PRECAUTION PEUT ENTRAÎNER DES BLESSURES GRAVES POUVANT ÊTRE MORTELLES.
EL NO REALIZAR LO ANTERIORMENTE INDICADO, PODRÍA OCASIONAR LA MUERTE O SERIAS LESIONES PERSONALES.

TRANE
THIS DRAWING IS PROPRIETARY AND SHALL NOT BE COPIED OR ITS CONTENTS DISCLOSED TO OUTSIDE PARTIES WITHOUT THE WRITTEN CONSENT OF TRANE.
DRAWN BY: J. Woosley © TRANE DATE: 28-May-2009
THIRD ANGLE PROJECTION
DO NOT SCALE PRINT

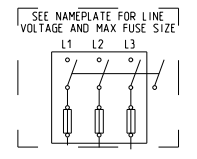
4366-6865
DIAGRAM
CONNECTION PRINT
YSC120E3
RELIATEL CONTROLS

IMPORTANT
DO NOT ENERGIZE UNIT UNTIL CHECK-OUT AND START-UP PROCEDURE HAS BEEN COMPLETED.

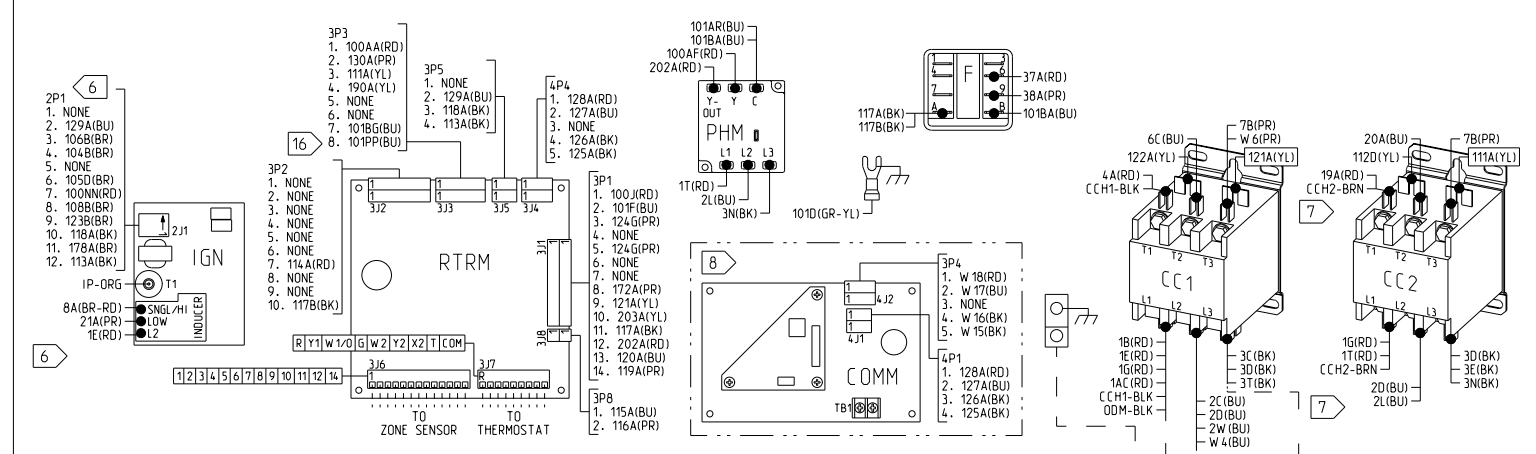
CAUTION
USE COPPER CONDUCTORS ONLY!
UNIT TERMINALS ARE NOT DESIGNED TO ACCEPT OTHER TYPES OF CONDUCTORS.
FAILURE TO DO SO MAY CAUSE DAMAGE TO THE EQUIPMENT.

ATTENTION
N'UTILISER QUE DES CONDUCTEURS EN CUIVRE!
LES BORNES DE L'UNITÉ NE SONT PAS CONÇUES POUR RECEVOIR D'AUTRES TYPES DE CONDUCTEURS.
L'UTILISATION DE TOUT AUTRE CONDUCTEUR PEUT ENDOMMAGER L'EQUIPEMENT.

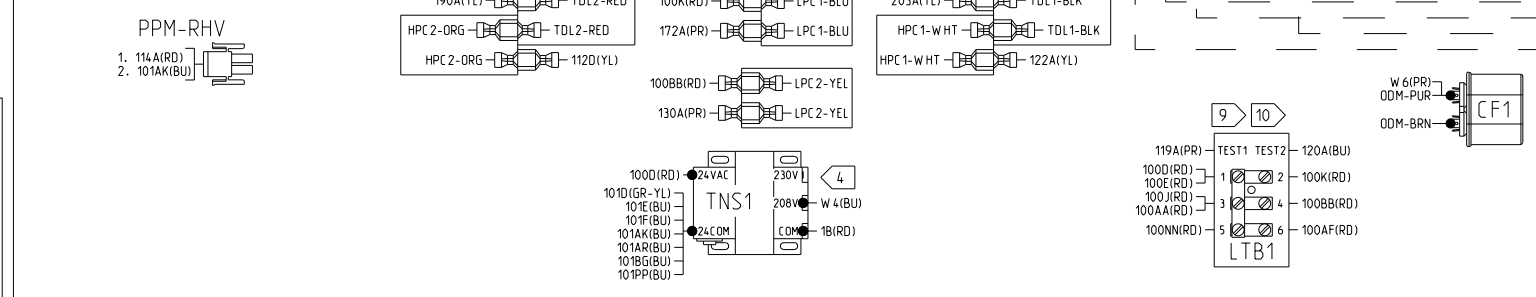
PRECAUCIÓN
¡UTILICE ÚNICAMENTE CONDUCTORES DE COBRE!
LAS TERMINALES DE LA UNIDAD NO ESTÁN DISEÑADAS PARA ACEPTAR OTROS TIPOS DE CONDUCTORES.
SI NO LO HACE, PUEDE OCASIONAR DAÑO AL EQUIPO.



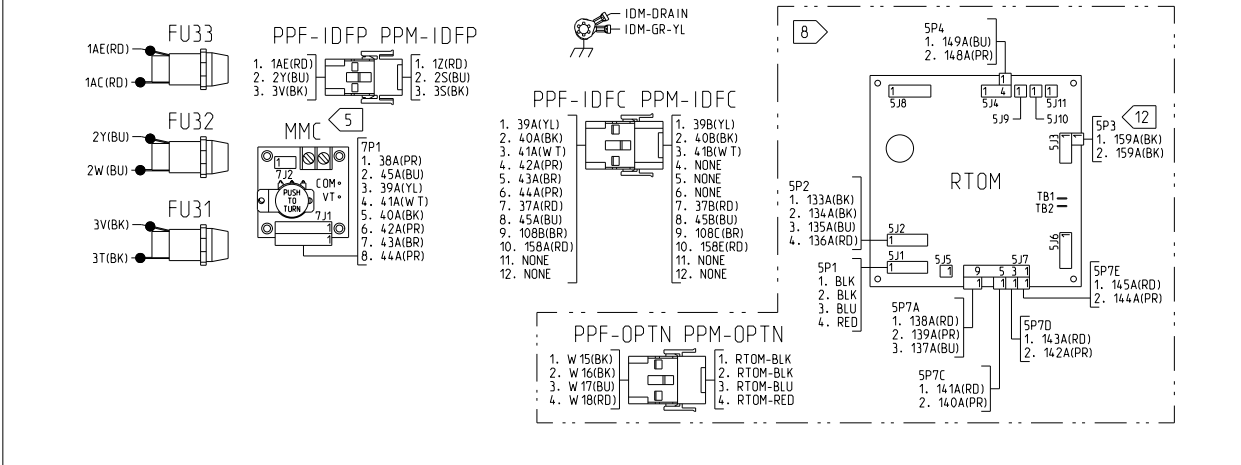
CONTROL BOX - VERTICAL



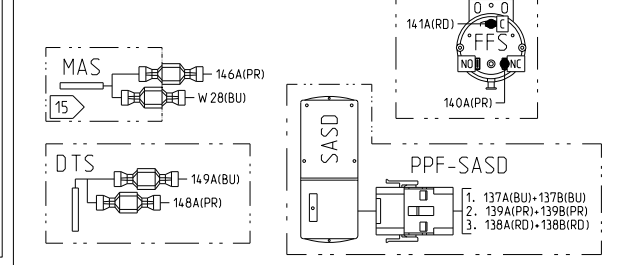
CONTROL BOX - HORIZONTAL



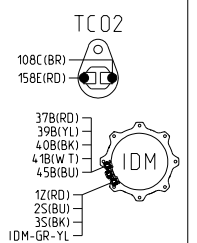
ID FAN CONTROLS PANEL



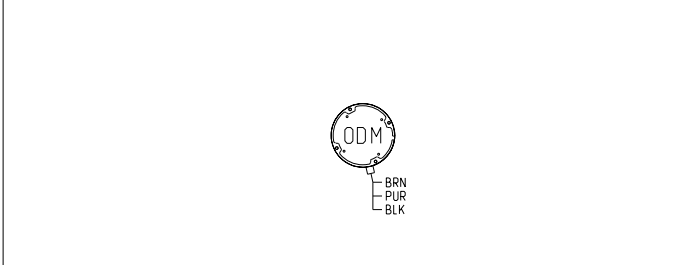
SUPPLY AIR SECTION



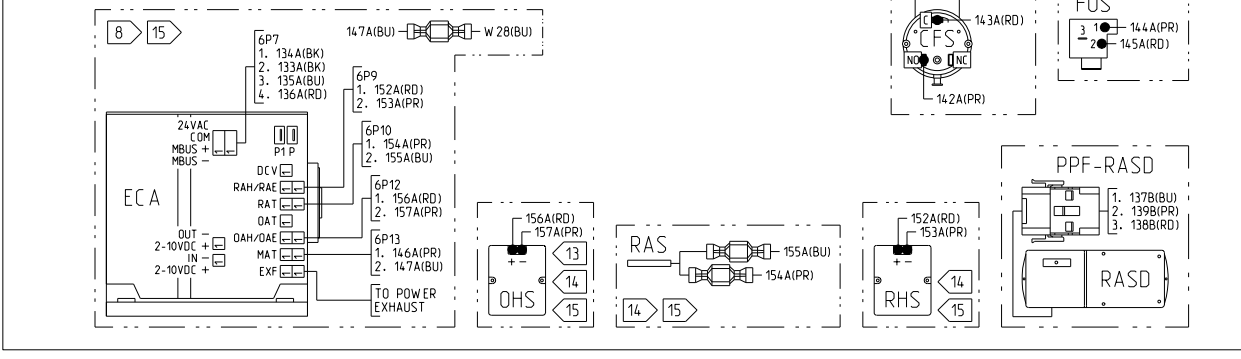
ID FAN COMPARTMENT



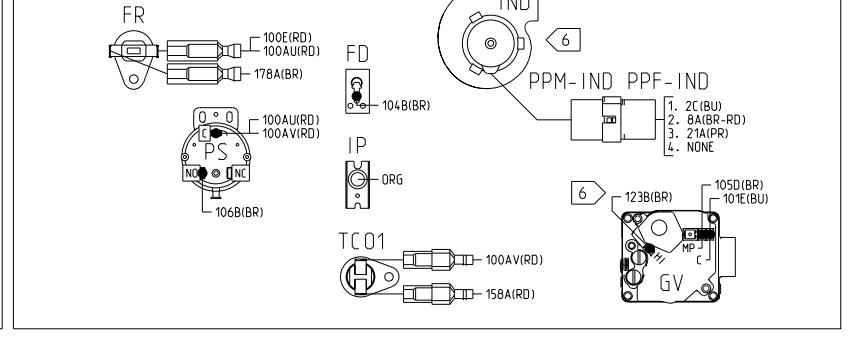
OUTDOOR SECTION



RETURN AIR SECTION



HEATER SECTION



- ZONE SENSOR**
- TO RTRM-3J6-1 - 1
 - TO RTRM-36J-2 - 2
 - TO RTRM-36J-3 - 3
 - TO RTRM-36J-4 - 4
 - TO RTRM-36J-5 - 5
 - TO RTRM-36J-6 - 6
 - TO RTRM-36J-7 - 7
 - TO RTRM-36J-8 - 8
 - TO RTRM-36J-9 - 9
 - TO RTRM-36J-10 - 10
- PROGRAMMABLE ZONE SENSOR W/ NIGHT SETBACK**
- TO RTRM-3J6-7 - 7
 - TO RTRM-36J-8 - 8
 - TO RTRM-36J-9 - 9
 - TO RTRM-36J-10 - 10
 - TO RTRM-36J-11 - 11
 - TO RTRM-36J-12 - 12
 - TO RTRM-36J-14 - 14
- THERMOSTAT**
- TO RTRM-3J7-R - RC
 - TO RTRM-3J7-W1-D - W1
 - TO RTRM-3J7-W2 - W2
 - TO RTRM-3J7-G - G
 - TO RTRM-3J7-RH - RH
 - TO RTRM-3J7-COM - COM
 - TO RTRM-3J7-Y1 - Y1
 - TO RTRM-3J7-Y2 - Y2