

UNLESS OTHERWISE SPECIFIED ALL DIMENSIONS ARE IN INCHES. TOLERANCE:

.X = ± 0.1
 .XX = ± 0.03
 .XXX = ± 0.005

ANGLES = ± 2.0 ° HOLE DIA = +
 CONFORMS TO ASME Y14.5M-1994.

FINISH ✓

TRANE

THIS DRAWING IS PROPRIETARY AND SHALL NOT BE COPIED OR ITS CONTENTS DISCLOSED TO OUTSIDE PARTIES WITHOUT THE WRITTEN CONSENT OF TRANE

DRAWN BY: J.Woosley ©TRANE DATE: 03-Jan-01

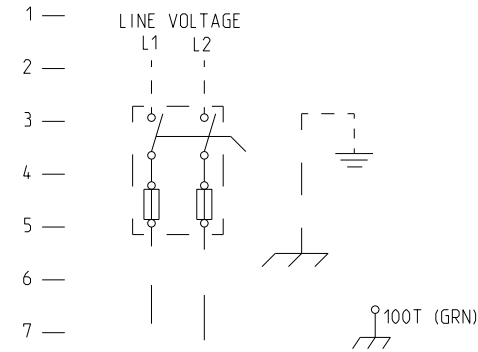
DO NOT SCALE PRINT

THIRD ANGLE PROJECTION

4366-1092

SHEET 1 OF 1 REV G

DIAGRAM
 ELECTRIC HEAT - 10 KW
 208V-240V/60Hz/1PH
 (T,W 036-060)



DEVICE DESIGNATION	DESCRIPTION	LINE NUMBER
AH	HEAT CONTACTOR - CIRCUIT A	16,17,24
BH	HEAT CONTACTOR - CIRCUIT B	20,21,25
CC1	COMPRESSOR CONTACTOR	11,12
FU3	UNIT FUSE	11
FU4	UNIT FUSE	12
FU6	ELECTRIC HEAT FUSE	16
FU7	ELECTRIC HEAT FUSE	17
HTRA	ELECTRIC HEAT ELEMENT	16
HTRB	ELECTRIC HEAT ELEMENT	20
PPF6/PPM6	ELECTRIC HEAT PLUG	24-30
TCOA	THERMAL CUTOUT - AUTO RESET	24
TCOB	THERMAL CUTOUT - AUTO RESET	25

- UNLESS OTHERWISE NOTED, ALL SWITCHES ARE SHOWN AT 25° C (77° F) AT ATMOSPHERIC PRESSURE. AT 50% RELATIVE HUMIDITY WITH ALL UTILITIES TURNED OFF AND AFTER A NORMAL SHUTDOWN HAS OCCURRED.
- DASHED LINES INDICATE RECOMMENDED FIELD WIRING BY OTHERS. DASHED LINE ENCLOSURES AND/OR DASHED DEVICE OUTLINES INDICATE COMPONENTS PROVIDED BY THE FIELD. PHANTOM LINE ENCLOSURES INDICATE ALTERNATE CIRCUITRY OR AVAILABLE SALES OPTIONS.
- NUMBERS ALONG THE RIGHT SIDE OF THE SCHEMATIC DESIGNATE THE LOCATION OF CONTACTS BY LINE NUMBER. AN UNDERLINED NUMBER INDICATES A NORMALLY CLOSED CONTACT.

- FOR SINGLE POINT POWER, UNCOIL WIRES W1(RED) AND W3(BLK) AND ROUTE THROUGH BUSHING IN DIVIDER PANEL, UP THROUGH HOLE IN UNIT CONTROL BOX, AND CONNECT TO COMPRESSOR CONTACTOR. (CC1 TERMINALS L1 AND L2. PPF6/PPM6 AND ASSOCIATED WIRING ARE PART OF THE UNIT.)
- CONNECT WIRE 100T(GRN) TO DIVIDER PANEL FOR BONDING.
- CONNECTIONS SHOWN ARE FOR RELIATEL UNITS. WIRES FOR ELECTRO-MECHANICAL UNITS ARE SHOWN IN BRACKETS.

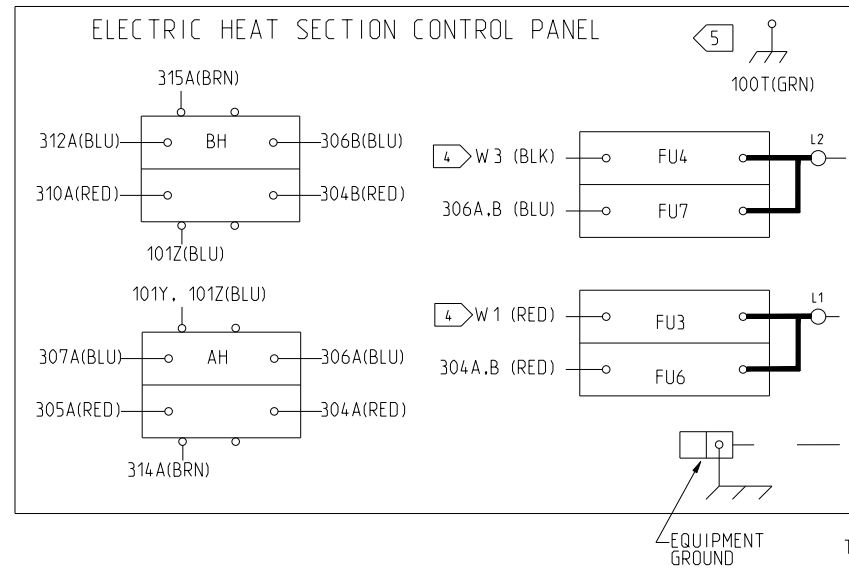
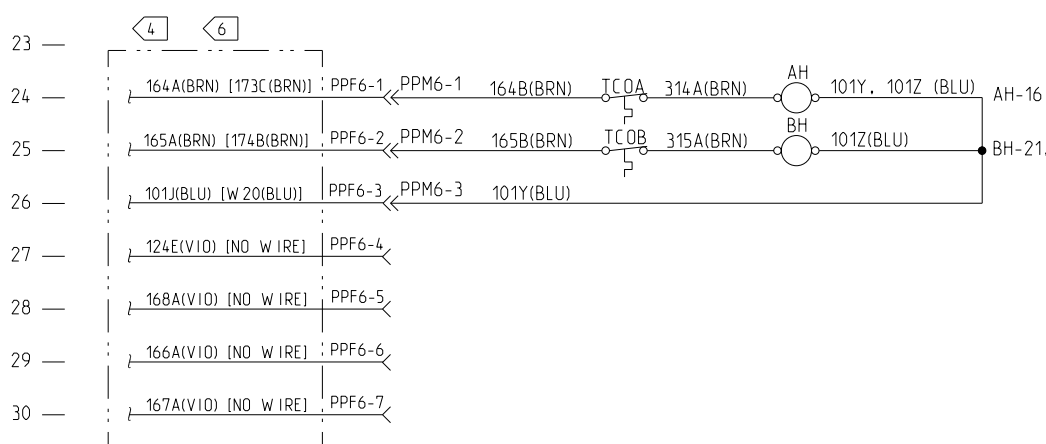
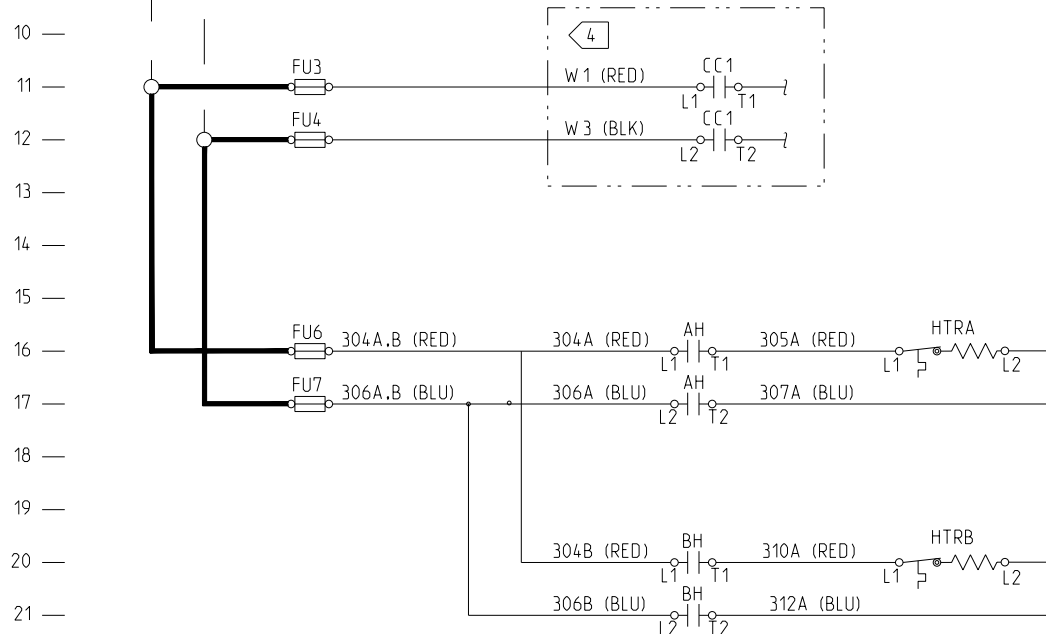
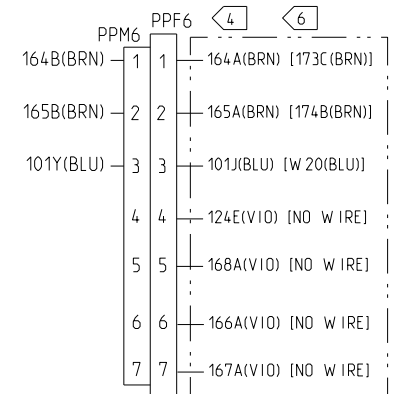
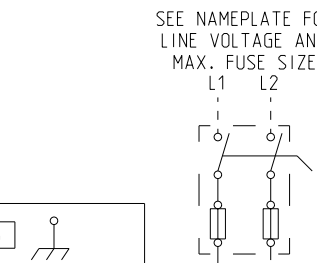
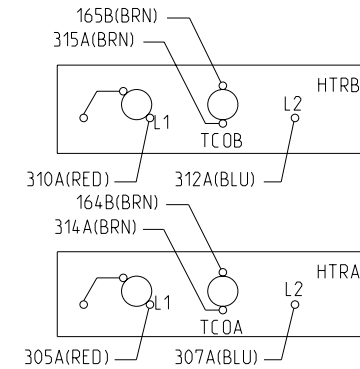
WARNING
 HAZARDOUS VOLTAGE!
 DISCONNECT ALL ELECTRIC POWER INCLUDING REMOTE DISCONNECTS AND FOLLOW LOCK OUT AND TAG PROCEDURES BEFORE SERVICING. INSURE THAT ALL MOTOR CAPACITORS HAVE DISCHARGED STORED VOLTAGE. UNITS WITH VARIABLE SPEED DRIVE. REFER TO DRIVE INSTRUCTIONS FOR CAPACITOR DISCHARGE.
 FAILURE TO DO THE ABOVE COULD RESULT IN DEATH OR SERIOUS INJURY.

AVERTISSEMENT
 TENSION DANGEREUSE!
 COUPER TOUTES LES TENSIONS ET OUVRIR LES SECTIONNEURS À DISTANCE. PUIS SUIVRE LES PROCEDURES DE VERROUILLAGE ET DES ÉTIQUETTES AVANT TOUTE INTERVENTION. VÉRIFIER QUE TOUTS LES CONDENSATEURS DES MOTEURS SONT DÉCHARGÉS. DANS LE CAS D'UNITÉS COMPORTANT DES ENTRAINEMENTS À VITESSE VARIABLE, SE REPORTER AUX INSTRUCTIONS DE L'ENTRAÎNEMENT POUR DÉCHARGER LES CONDENSATEURS.
 NE PAS RESPECTER CES MESURES DE PRÉCAUTION PEUT ENTRAÎNER DES BLESSURES GRAVES POUVANT ÊTRE MORTELLES.

IMPORTANT
 DO NOT ENERGIZE UNIT UNTIL CHECK-OUT AND START-UP PROCEDURE HAS BEEN COMPLETED.

CAUTION
 USE COPPER CONDUCTORS ONLY!
 UNIT TERMINALS ARE NOT DESIGNED TO ACCEPT OTHER TYPES OF CONDUCTORS. FAILURE TO DO SO MAY CAUSE DAMAGE TO THE EQUIPMENT.

FUSE REPLACEMENT TABLE		
ELECTRIC HEAT FUSE - FU6, FU7		
208,230V - 10KW	TYPE T, 300V	60A
UNIT FUSE - FU3 & FU4		
208,230V	TYPE T, 300V	60A



B

A

4

3

2

1