

NOTES:

- 1 ALL WIRING AND DEVICES SHOWN DASHED TO BE SUPPLIED AND INSTALLED BY THE CUSTOMER IN ACCORDANCE WITH LOCAL AND NATIONAL ELECTRICAL CODES.
- 2 IF ANY OF THE ORIGINAL WIRE, AS SUPPLIED WITH THIS UNIT, MUST BE REPLACED, REPLACE IT WITH APPLIANCE WIRING MATERIAL RATED AT 105°C AND 600V.
- 3 THREE PHASE MOTORS ARE PROTECTED UNDER PRIMARY SINGLE PHASING CONDITIONS. ALL MOTORS HAVE INTERNAL OVERLOAD PROTECTION. COMPRESSORS HAVE INTERNAL THERMAL PROTECTION.
- 4 REQUIRED FOR OPTIONAL REFERENCE ENTHALPY CONTROL.
- 5 REQUIRED FOR OPTIONAL COMPARATIVE ENTHALPY CONTROL.
- 6 OPTIONAL MAS, RAS, RHS, OHS AND ASSOCIATED WIRING NOT USED WITH MOTORIZED OUTSIDE AIR.
- 7 WHEN ELECTRIC HEAT OPTION IS REQUIRED, REFER TO ELECTRIC HEAT DIAGRAM FOR CUSTOMER CONNECTIONS.

WIRE COLOR DESIGNATION			
ABBR	COLOR	ABBR	COLOR
BK	BLACK	V (PR)	PURPLE
BL	BLUE	R	RED
BR	BROWN	TN	TAN
G	GREEN	W	WHITE
O	ORANGE	Y	YELLOW

IMPORTANT!

DO NOT ENERGIZE UNIT UNTIL CHECK-OUT AND START-UP PROCEDURE HAS BEEN COMPLETED.

TRANE

THIS DRAWING IS PROPRIETARY AND SHALL NOT BE COPIED OR ITS CONTENTS DISCLOSED TO ANY OTHER PARTIES WITHOUT THE CONSENT OF TRANE.

DRAWN BY: R. JOHNSON

TRANE® DATE: 31-JAN-13

REPLACES: 2313-2020B

REVISION DATE: 10-APR-13

EAD SYSTEM USED: Pro/DETAIL

SIMILAR TO: --

FILE NUMBER: 2313-2018

DRAWING NUMBER: 2313-2020B

SHEET: 1 OF 1

REV B

VOYAGER 2

DIAGRAM

CONNECTIONS - RACEWAY

MOISTURE REMOVAL CAPABILITY: 65K SCCR

CAUTION

USE COPPER CONDUCTORS ONLY!

PRECAUCIÓN

N'UTILISER QUE DES CONDUCTEURS EN CUIVRE!

ATTENTION

UTILISE UNICAMENTE CONDUCTORES DE COBRE!

UNIT TERMINALS ARE NOT DESIGNED TO ACCEPT OTHER TYPES OF CONDUCTORS.

LES BORNES DE L'UNITÉ NE SONT PAS CONÇUES POUR RECEVOIR D'AUTRES TYPES DE CONDUCTEURS.

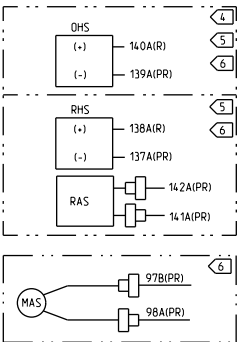
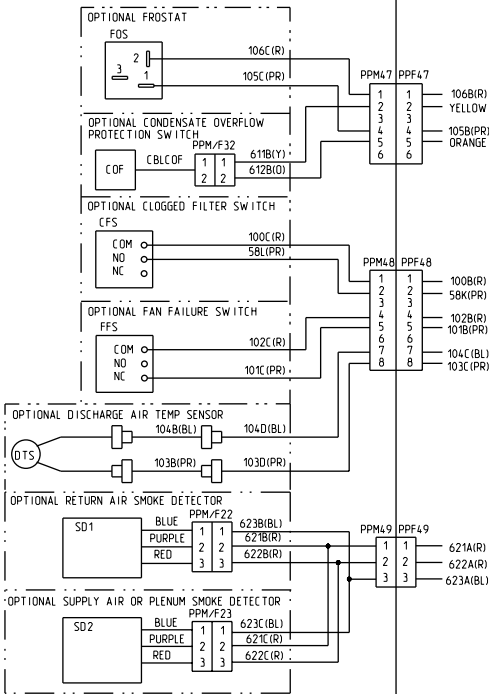
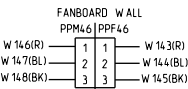
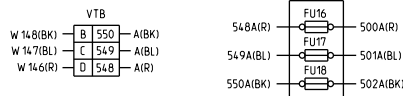
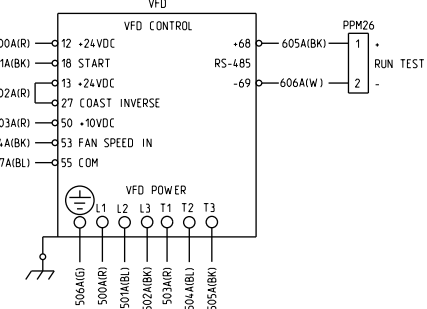
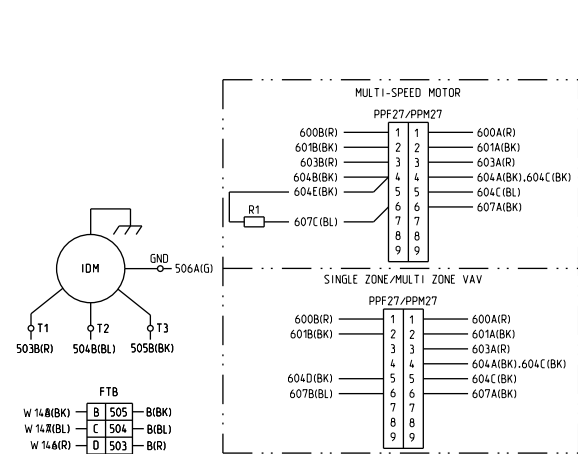
LAS TERMINALES DE LA UNIDAD NO ESTÁN DISEÑADAS PARA ACEPTAR OTROS TIPOS DE CONDUCTORES.

FAILURE TO DO SO MAY CAUSE DAMAGE TO THE EQUIPMENT.

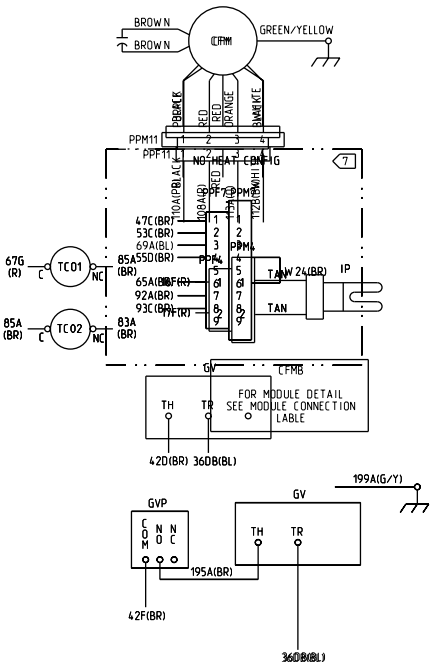
L'UTILISATION DE TOUT AUTRE CONDUCTEUR PEUT ENDOMMAGER L'ÉQUIPEMENT.

SI NO LO HACE, PUEDE OCASIONAR DAÑO AL EQUIPO.

INDOOR SECTION



HEAT SECTION



OUTDOOR SECTION

