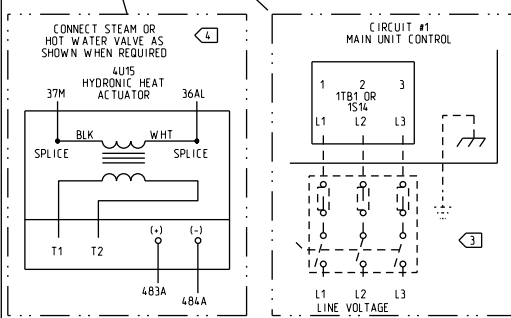


**CAUTION**  
USE COPPER CONDUCTORS ONLY!  
UNIT TERMINALS ARE NOT DESIGNED TO ACCEPT OTHER TYPES OF CONDUCTORS.  
FAILURE TO DO SO MAY CAUSE DAMAGE TO THE EQUIPMENT.  
N'UTILISER QUE DES CONDUCTEURS EN CUIVRE!  
LES BORNES DE L'UNITÉ NE SONT PAS CONÇUES POUR RECEVOIR D'AUTRES TIPOUS DE CONDUCTEURS.  
L'UTILISATION DE TOUT AUTRE CONDUCTEUR PEUT ENDOMMAGER L'ÉQUIPEMENT.  
**PRECAUCIÓN**  
UTILICE ÚNICAMENTE CONDUCTORES DE COBRE!  
LAS TERMINALES DE LA UNIDAD NO ESTÁN DISEÑADAS PARA ACEPTAR OTROS TIPOUS DE CONDUCTORES.  
SI NO LO HACE, PUEDE OCASIONAR DAÑO AL EQUIPO.

**WARNING**  
HAZARDOUS VOLTAGE!  
DISCONNECT ALL ELECTRIC POWER INCLUDING REMOTE DISCONNECTS AND FOLLOW LOCK OUT AND TAG PROCEDURES BEFORE SERVICING. INSURE THAT ALL MOTOR CAPACITORS HAVE DISCHARGED STORED VOLTAGE. UNITS WITH VARIABLE SPEED DRIVE, REFER TO DRIVE INSTRUCTIONS FOR CAPACITOR DISCHARGE.  
FAILURE TO DO THE ABOVE BEFORE SERVICING COULD RESULT IN DEATH OR SERIOUS INJURY.  
**AVERTISSEMENT**  
TENSION DANGEREUSE!  
COUPER TOUTES LES TENSIONS ET OUVRIR LES SECTIONNEURS À DISTANCE. PUIS SUIVRE LES PROCÉDURES DE VERROUILLAGE ET DES ÉTIQUETTES AVANT TOUTE INTERVENTION. VÉRIFIER QUE TOUTS LES CONDENSATEURS DES MOTEURS SONT DÉCHARGÉS. DANS LE CAS D'UNITÉS COMPORTANT DES ENTRAÎNEMENTS À VITESSE VARIABLE, SE REPORTER AUX INSTRUCTIONS DE L'ENTRAÎNEMENT POUR DÉCHARGER LES CONDENSATEURS.  
NE PAS RESPECTER CES MESURES DE PRÉCAUTION PEUT ENTRAÎNER DES BLESSURES GRAVES POUVANT ÊTRE MORTELLES.



FUSE REPLACEMENT TABLE

CONDENSER FAN FUSE 1F1-1F3 CLASS CC TYPE FNO-R	UNIT VOLTAGE 460V/60/3	COMPRESSOR PROTECTION FUSE 1F4 & 1F5 TYPE MTH	460V/60/3
TRANSFORMER CIRCUIT FUSE 1F72-1F74 TYPE FNO-R	8A	OPTIONAL SUMP HEATER FUSE 1F101-1F103 CLASS CC TYPE FNO-R	5A
OPTIONAL CONVENIENCE OUTLET FUSE 1F55 AND 1F56 (TIME DELAY TYPE FNO-R FUSE)	15A	OPTIONAL ELECTRIC HEAT FUSE 4F19-4F36, 4F46-4F48 - CLASS K5	60A

CONTROL POWER FUSE

CONTROL (1T1) TRANSFORMER RATING	0.25 KVA	0.50 KVA	0.75 KVA	1.00 KVA	1.50 KVA
24-36 TON	6.25A	12.5A	18.75A	25A	37.5A
48 TON	15A	30A	45A	60A	90A
59-73 TON	15A	30A	45A	60A	90A
80-89 TON	15A	30A	45A	60A	90A

VFD PROTECTION FUSES (CLASS "T" FUSES - 600V RATING)

OPTIONAL SUPPLY VFD 1F57-1F62	OPTIONAL EXHAUST / RETURN VFD 1F63-1F65
BELT DRIVE MOTORS 24-89T UNITS	
UNIT VOLTAGE 460V/60/3	
3 HP	5 HP
7.5 HP	10 HP
15 HP	20 HP
25 HP	30 HP
40 HP	50 HP
15A	25A
35A	45A
60A	90A
100A	125A
200A	

CUSTOMER CONNECTION WIRE RANGE

BLOCK SIZE	WIRE QTY	CONNECTOR WIRE RANGE	UNITS WITH MAIN POWER TERMINAL BLOCK (ALL VOLTAGES)			UNITS WITH MAIN POWER DISCONNECT SWITCH (ALL VOLTAGES)		
			DISCONNECT SIZE	WIRE QTY	CONNECTOR WIRE RANGE	DISCONNECT SIZE	WIRE QTY	CONNECTOR WIRE RANGE
335 AMP	(1)	#6 - 350 MCM	100 AMP	(1)	#14 - 1/0	100 AMP	(1)	#14 - 1/0
760 AMP	(2)	#4 - 500 MCM	250 AMP	(1)	#4 - 350 kcmil	250 AMP	(1)	#4 - 350 kcmil
840 AMP	(2)	#2 - 600 MCM	400 AMP	(1) OR (2)	#1 - 600 kcmil OR #1 - 250 kcmil	400 AMP	(1) OR (2)	#1 - 250 kcmil
			600 AMP	(2)	250 - 500 MCM	600 AMP	(2)	250 - 500 MCM
			1000 AMP	(3)	3/0 - 500 kcmil	1000 AMP	(3)	3/0 - 500 kcmil

**IMPORTANT!**  
DO NOT ENERGIZE UNIT UNTIL CHECK-OUT AND START-UP PROCEDURE HAS BEEN COMPLETED.

TRANE

THIS DRAWING IS PROPRIETARY AND SHALL NOT BE COPIED OR ITS CONTENTS DISCLOSED TO ANY OTHER PARTIES WITHOUT THE CONSENT OF TRANE.

FILE NUMBER: 2313-1120	DRAWING NUMBER: 2313-1122	SHEET: 1 of 1	REV A
---------------------------	------------------------------	------------------	----------

ROOFTOP PACKAGED AIR CONDITIONER DIAGRAM

FIELD CONNECTION EXTERNAL DEVICES - AREA 5

24-89 TON VARIABLE AIR VOLUME

- NOTES:
- ALL WIRING AND COMPONENTS SHOWN DASHED TO BE SUPPLIED AND INSTALLED BY THE CUSTOMER IN ACCORDANCE WITH LOCAL ELECTRICAL CODES.
  - CUSTOMER CONNECTIONS - MAIN UNIT CONTROL (CIRCUIT #1) - ARE LOCATED IN THE CONDENSER SECTION FOR 24 THRU 89 TON UNITS.
  - SEE CUSTOMER CONNECTION WIRE RANGE TABLE FOR ACCEPTABLE WIRE SIZES FOR CONNECTION TO MAIN UNIT TERMINAL BLOCK (1T1/4T1) OR DISCONNECT SWITCH (15/4/45/15).
  - WIRES TO THE OPTIONAL STEAM AND/OR HOT WATER HEAT VALVE ARE SUPPLIED WITH THE UNIT. WIRE CONNECTIONS TO THE VALVE TO BE MADE BY THE CUSTOMER.
  - OPTIONAL 5U57 REMOTE ZONE TEMP SENSOR IS USED FOR UNOCCUPIED HEAT/COOL TEMP CONTROL SENSING.
  - WHEN 5U69 REMOTE ZONE TEMP SENSOR IS USED, REMOVE 5U58 INTERGRAL ZONE TEMP SENSOR ATTACHED TO TERMINALS S1 AND S2.
  - WIRES USE SHIELDED TWISTED PAIR WIRE.
  - USE SHIELDED TWISTED PAIR WIRE. WRAP SHIELDS WITH TAPE TO PREVENT CONTACT WITH GROUND.
  - REMOVE JUMPER (1T14-15 & 1T14-16) AND INSTALL HIGH DUCT TEMP T-STAT OR FIELD SUPPLIED DEVICE.
  - REMOVE JUMPER (1T14-17 & 1T14-18) WHEN FIELD SUPPLIED EXTERNAL AUTO/STOP SWITCH (5S67) IS INSTALLED.
  - CHANGEOVER (5K87) AVAILABLE ONLY ON HYDRONIC HEAT UNITS OR MODULATING GAS HEAT UNITS.
  - ALARM OUTPUT SWITCHES ON ANY MANUAL RESET DIAGNOSTIC.
  - OPTIONAL HEAT MODULE AUX. TEMP (5RT16) IS USED FOR MORNING WARM-UP CONTROL ON UNITS WITH HEATING OPTION.
  - TERMINAL BLOCK 1T17 AND ASSOCIATED WIRING REQUIRED WITH GBAS (1U51) OPTION. DEMAND LIMIT RELAY (5K89) TO BE PROVIDED BY CUSTOMER.
  - VENTILATION OVERRIDE MODE CONTACTS RATED 12MA @ 24VDC MINIMUM (5K90 - 5K94) TO BE PROVIDED BY CUSTOMER.
  - WIRE NODES 533 & 534 REQUIRED WITH BAS/NETWORK COMM MODULE (1U54) OPTION. USE SHIELDED TWISTED PAIR WIRE.
  - FIELD CONNECTIONS TO DRIVE VAV BOXES FULL OPEN DURING NIGHT SETBACK MODE.
  - CONTACTS RATED 12 MA @ 24VDC MINIMUM.
  - CONNECT TO 24VAC CLASS 2 CIRCUITS ONLY.
  - FIELD SUPPLIED AND INSTALLED OCCUPIED/UNOCCUPIED CONTACTS (5K86) FOR USE ON UNITS WITHOUT REMOTE PANEL WITH NIGHT SETBACK (5U58).
  - GBAS 0-5V OPTION CONNECTIONS.
  - GBAS 0-10V OPTION CONNECTIONS.
  - FOR GBAS INPUTS A11-A14, "GBAS 0-5V" REQUIRES 0-5V VDC AND "GBAS 0-10V" REQUIRES 0-10VDC.
  - "ACTIVE DIAGNOSTICS (B05)" APPEARS WITH BOTH "GBAS 0-5V" AND "GBAS 0-10V".
  - SEE FUSE REPLACEMENT TABLE ON VFD PANEL FOR VFD POWER FUSES (F40, F41, F42).
  - CONNECTIONS FOR CO2 SENSOR ARE USED WITH OPTIONAL TRAQ DAMPER ONLY.

DEVICE PREFIX LOCATION CODE

AREA	LOCATION
1	INSIDE UNIT CONTROL BOX
2	CONDENSER SECTION
3	AIR HANDLER SECTION
4	HEATING SECTION
5	EXTERNAL FIELD MOUNTED DEVICE

