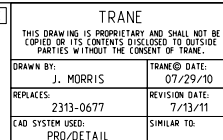
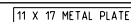
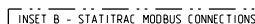


- 22 SENSOR EET AND WIRES 110A & 111A USED WITH OPTIONAL DEHUMIDIFICATION AND IS ATTACHED TO CIRCUIT 1 FOR 27.5-35 TON UNITS, AND TO CIRCUIT 2 FOR 40-50 TON UNITS.
- 23 WIRE 117A IS REQUIRED TO ENABLE DEHUMIDIFICATION. WIRES 141A AND 142A ARE USED WITH DEHUMIDIFICATION AND CUSTOMER INSTALLED SPACE HUMIDITY SENSOR (SHS). WIRES 112A AND 113A ARE USED WITH DEHUMIDIFICATION AND CUSTOMER INSTALLED HUMIDISTAT (HST).

INSET A - OPTIONAL MODBUS CONNECTIONS



FILE NUMBER: 62-12661-117

DRAWING NUMBER:
0242-070

SHEET:	REV
--------	-----

REV	
-----	--

2313-0663

2313-0704

1 OF 1	B
--------	---

	B
--	---

VOYAGER 3

RACEWAY DEVICES CONNECTION PRINT

40 TON

CONSTANT VOLUME

2 STAGE GAS HEAT



STANDARD INDOOR FAN MOTOR

