

NOTES:

- 121- [4] REQUIRED FOR OPTIONAL REFERENCE ENTHALPY CONTROL.
- 122- [5] REQUIRED FOR OPTIONAL COMPARATIVE ENTHALPY CONTROL.
- 124- [6] LPC1 IS A LOW PRESSURE CUTOFF SWITCH USED FOR COMPRESSOR PROTECTION. CAUTION! DO NOT JUMPER ACROSS SWITCHES UNDER ANY CIRCUMSTANCES. TO DISABLE COMPRESSORS, REMOVE JUMPERS AND CONNECT FIELD SUPPLIED DEVICE.
- 125- [7] WIRING SHOWN IS FOR UNIT WITH INDOOR FAN MOTOR DRIVES. WHEN UNIT HAS OPTIONAL VARIABLE FREQUENCY DRIVE SEE INSETS A, B, AND C.
- 126- [8] NOT USED ON UNITS WITH VARIABLE FREQUENCY DRIVES (SEE INSET B).
- 127- [9] XFR CAN BE FOUND ON LINES 20.21, & 175.
- 128- [10] REMOVE JUMPER BETWEEN LTB-5 AND LTB-6 AND INSTALL FIELD PROVIDED DEVICE WHEN REQUIRED.
- 129- [11] TO ENABLE COMPRESSOR LEAD/LAG OPERATION, CUT WIRE 36AG.
- 130- [12] RELAY ENERGIZED DURING ALL CV MODES: UNOCC, DWU, MWU.

CAUTION

USE COPPER CONDUCTORS ONLY!
 UNIT TERMINALS ARE NOT DESIGNED TO ACCEPT OTHER TYPES OF CONDUCTORS.
 FAILURE TO DO SO MAY CAUSE DAMAGE TO THE EQUIPMENT.

PRECAUCIÓN

UTILISER QUE DES CONDUCTEURS EN CUIVRE!
 LES BORNES DE L'UNITÉ NE SONT PAS CONÇUES POUR RECEVOIR D'AUTRES TYPES DE CONDUCTEURS.
 L'UTILISATION DE TOUT AUTRE CONDUCTEUR PEUT ENDOMMAGER L'EQUIPEMENT.

ATTENTION

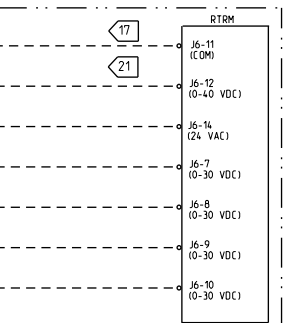
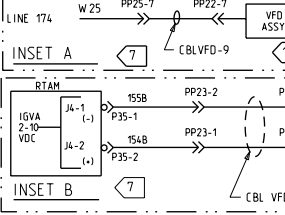
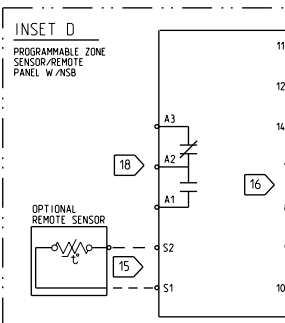
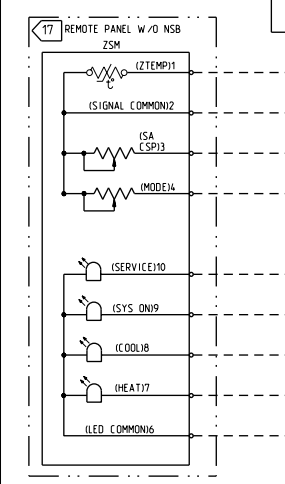
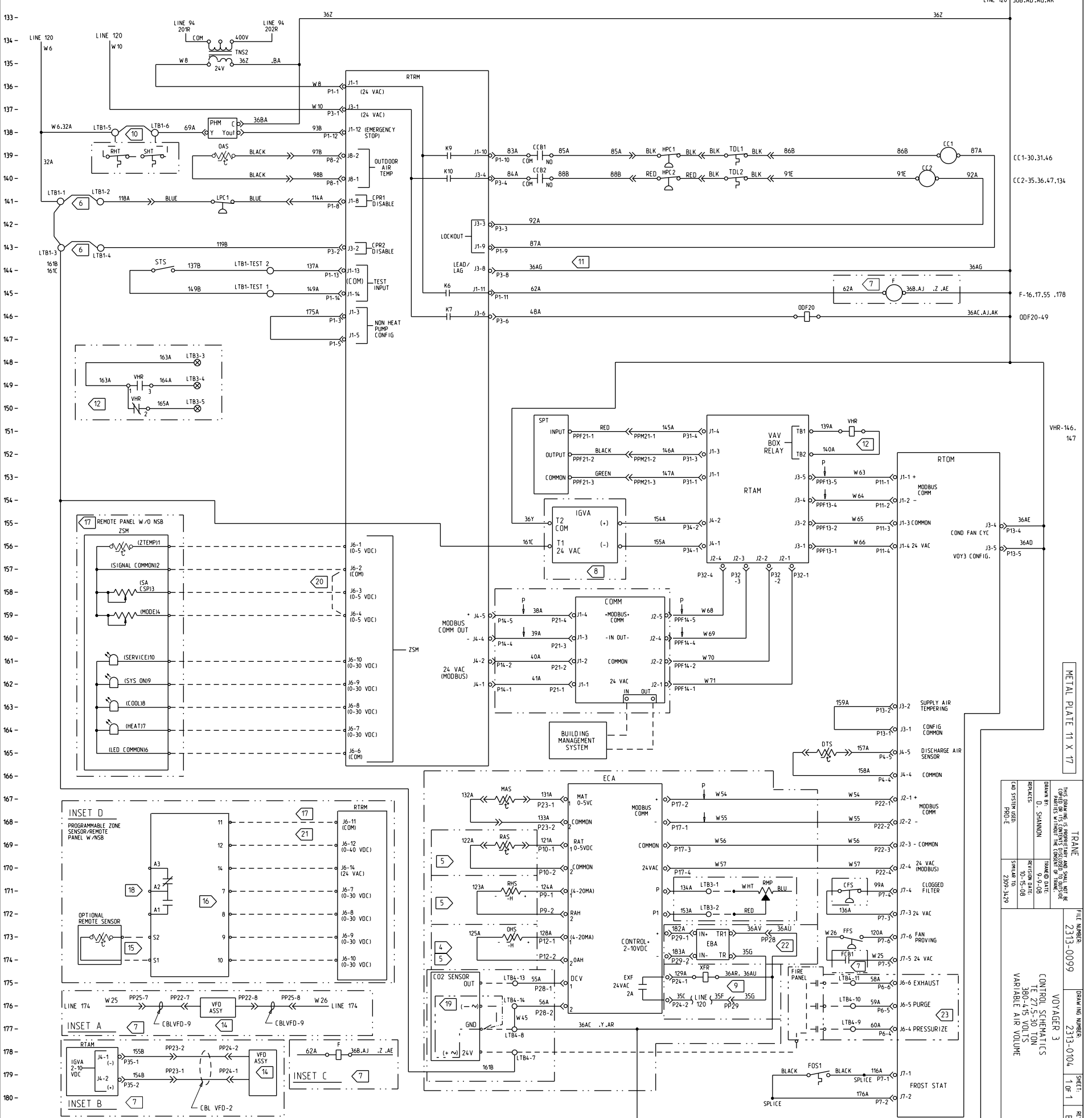
UTILICE UNICAMENTE CONDUCTORES DE COBRE!
 LAS TERMINALES DE LA UNIDAD NO ESTÁN DISEÑADAS PARA ACEPTAR OTROS TIPOS DE CONDUCTORES.
 SI NO LO HACE, PUEDE OCASIONAR DAÑO AL EQUIPO.

- [14] SEE APPLICABLE VARIABLE FREQUENCY DRIVE DIAGRAM FOR BALANCE OF CIRCUIT.
- [15] INSTALL OPTIONAL REMOTE SENSOR TO TERMINALS S1 AND S2 WHEN REQUIRED. SEE PROGRAMMABLE ZONE SENSOR / REMOTE PANEL W/NSB LITERATURE FOR OPTION CONFIGURATION. TERMINALS 7,8,9 & 10 ARE FOR OPTIONAL INDICATORS.
- [16] INSET D IS FOR OPTIONAL PROGRAMMABLE ZONE SENSOR.
- [18] AUXILIARY RELAY ENERGIZED DURING OCCUPIED PERIODS.
- [19] 0-10 VDC DUCT MOUNTED SENSOR ONLY.
- [20] PROVIDE JUMPER BETWEEN RTRM J6-2 & RTRM J6-4 TO ENABLE AUTO MODE WHEN NO OTHER MODE INPUT IS USED.

- [21] PROVIDE CONTACT CLOSURE BETWEEN RTRM J6-11 & RTRM J6-12 TO ENABLE UNOCCUPIED MODE WHEN NOT USING PROGRAMMABLE ZSM/REMOTE PANEL OR BMS.
- [22] EBA REQUIRED FOR OPTIONAL FRESH AIR TRACKING EXHAUST.
- [23] OPTIONAL VENTILATION OVERRIDE

DEVIATION	DESCRIPTION	LINE NUMBER
CC1	COMPRESSOR CONTACTOR #1	139
CC2	COMPRESSOR CONTACTOR #2	140
CFS	CLOGGED FILTER SWITCH	171
CO2 SENS	CO2 SENSOR	175
COMM	COMMUNICATIONS MODULE	159
DTS	DISCHARGE TEMP SENSOR	165
EBA	EXHAUST BLADE ACTUATOR	173
ECA	ECONOMIZER ACTUATOR	167
F	IDM FAN CONTACTOR	147
FIRE PANEL	FIRE PANEL	180
FFS	FAN FAILURE SWITCH	173
FOS1	FROST STAT 1	179
HPC1	HIGH PRESSURE CUTOFF #1	139
HPC2	HIGH PRESSURE CUTOFF #2	140
IGVA	INLET GUIDE VANE ACTUATOR	155
LPC1	LOW PRESSURE CUTOFF #1	141
MAS	MIXED AIR SENSOR	167
OAS	OUTSIDE AIR SENSOR	139

DEVIATION	DESCRIPTION	LINE NUMBER
ODF20	OUTDOOR FAN RELAY #20	145
OH5	OUTSIDE HUMIDITY SENSOR	173
PHM	PHASE MONITOR	138
RAS	RETURN AIR SENSOR	169
RHS	RETURN HUMIDITY SENSOR	171
RHT	RETURN HIGH TEMP.	139
RMP	REMOTE MINIMUM POSITION	171
RTAM	VAV MODULE	151,179
RTDM	OPTIONS MODULE	153
RTRM	REFRIGERATION MODULE	135,168
SHT	SUPPLY HIGH TEMP.	139
SPT	STATIC PRESS. TRANSDUCER	151
STS	SERVICE TEST SWITCH	144
TDL1	TEMPERATURE DISCHARGE LIMIT #1	139
TDL2	TEMPERATURE DISCHARGE LIMIT #2	140
THERMOSTAT	THERMOSTAT	148
TNS2	CONTROL TRANSFORMER	134
TNS7	CONTROL TRANSFORMER	131
VFD	VARIABLE FREQUENCY DRIVE	176,179
VHR	VAV BOX RELAY	149,150,151
XFR	EXHAUST FAN RELAY	175
ZSM	ZONE SENSOR MODULE	156,168



METAL PLATE 11 X 17

TRANS

2313-0099

2313-0104

VOYAGER 3

CONTROL SCHEMATICS

REV 1

REV 2

DATE: 9-9-08

REVISION DATE: 10-15-08

DESIGNED BY: D. SHANNON

TRACED BY: DATE: 10-15-08

FILE NUMBER: 2313-0099

DRAWING NUMBER: 2313-0104

SHEET: 1 OF 1

REV: B