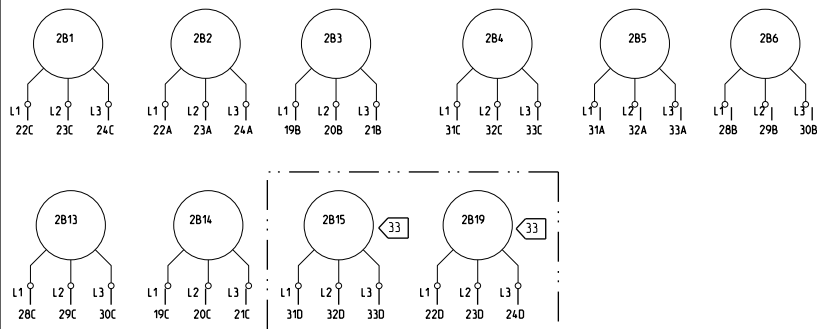
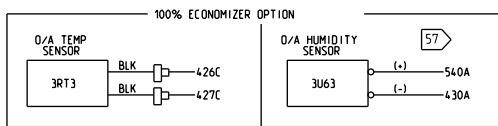


INSET "3A" - COND FAN MOTORS



INSET "3K" - OUTDOOR AIR TEMP/HUMIDITY SENSORS



10 X 15 METAL PLATE

DEVICE PREFIX LOCATION CODE	
AREA	LOCATION
1	INSIDE UNIT CONTROL BOX
2	CONDENSER SECTION
3	AIR HANDLER SECTION
4	HEATING SECTION
5	EXTERNAL FIELD MOUNTED DEVICE

TRANE
THIS DRAWING IS PROPRIETARY AND SHALL NOT BE COPIED OR ITS CONTENTS DISCLOSED TO OUTSIDE PARTIES WITHOUT THE CONSENT OF TRANE.

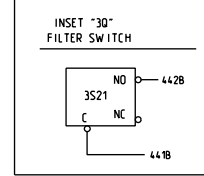
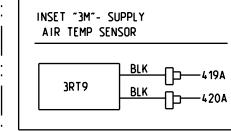
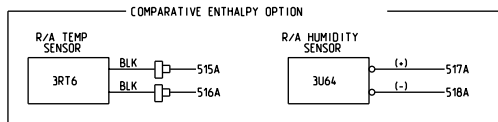
FILE NUMBER: 2313-0093 DRAWING NUMBER: 2309-3076 SHEET: 3 OF 3 REV: C

ROOFTOP PACKAGED AIR CONDITIONER
 CONNECTION WIRING DIAGRAM
 RACEWAY WIRE DEVICES - AREAS 2 - 3 - 4
 W/ SUPPLY AND EXHAUST FAN VARIABLE FREQUENCY DRIVES
 90 - 105 TON S.H.G.

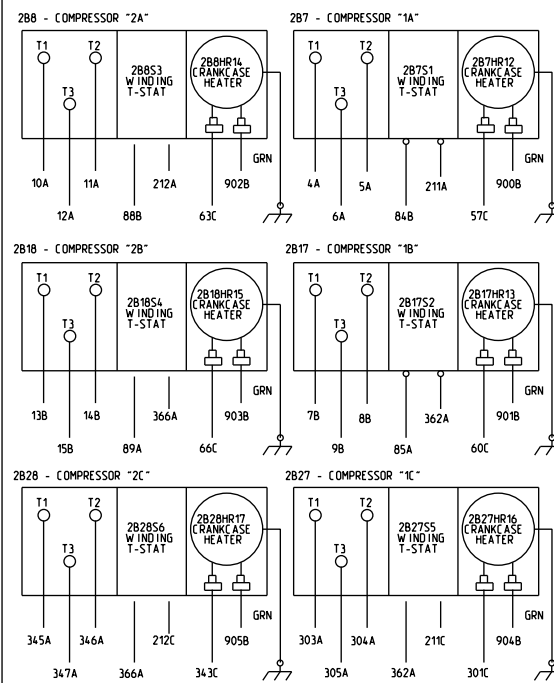
DRAWN BY: B. SMALLING TRANE DATE: 07/15/2001
 REPLACES: REVISION DATE:
 CAD SYSTEM USED: SIMILAR TO: 2307-4550

- NOTES:
- 33 2B15, 2B19 AND ASSOCIATED WIRING USED ON 105 TON UNITS ONLY.
 - 37 PLUGS LOCATED IN MAIN CONTROL PANEL.
 - 52 25A, 25S ARE LOW PRESSURE CUTOFF SWITCHES USED FOR COMPRESSOR PROTECTION (7 PSIG). CAUTION !! DO NOT JUMPER ACROSS SWITCH UNDER ANY CIRCUMSTANCE.
 - 55 WIRES REQUIRED ONLY FOR V.F.D. WITH BYPASS OPTION.
 - 56 WIRES 213B, 37AD REQUIRED ONLY ON UNITS WITH GAS OR ELECTRIC HEAT.
 - 57 3U63 AND ASSOCIATED WIRING USED ON REFERENCE ENTHALPY AND COMPARATIVE ENTHALPY OPTIONS.
 - 58 SEE APPLICABLE VARIABLE FREQUENCY DRIVE DIAGRAM FOR BALANCE OF CIRCUIT.

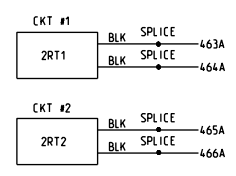
INSET "3L" - RETURN AIR TEMP/HUMIDITY SENSORS



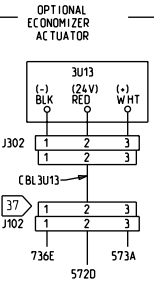
INSET "3B" - COMPRESSORS



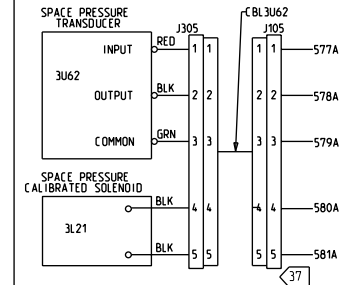
INSET "3C" - SAT COND TEMP SENSORS



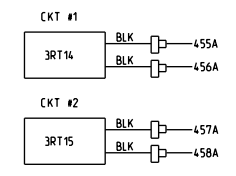
INSET "3J" - OPTIONAL ECONOMIZER ACTUATOR



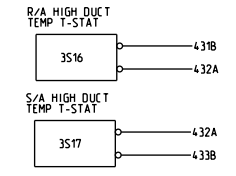
OPTIONAL EXHAUST FAN CONTROL



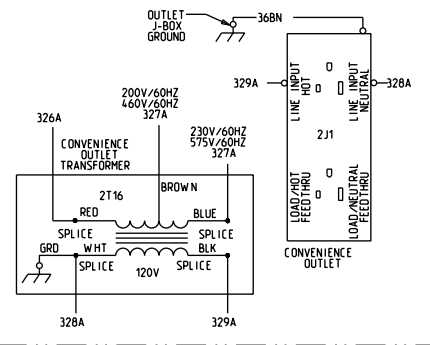
INSET "3N" - EVAPORATOR TEMP SENSORS



INSET "3P" - OPTIONAL HIGH DUCT TEMP T-STAT



INSET "3Y" - OPTIONAL CONVENIENCE OUTLET



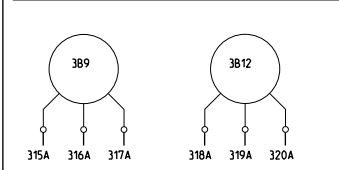
IMPORTANT!
 DO NOT ENERGIZE UNIT UNTIL CHECK-OUT AND START-UP PROCEDURE HAS BEEN COMPLETED.

WARNING
 HAZARDOUS VOLTAGE!
 DISCONNECT ALL ELECTRIC POWER INCLUDING REMOTE DISCONNECTS BEFORE SERVICING.
 FAILURE TO DISCONNECT POWER BEFORE SERVICING CAN CAUSE SEVERE PERSONAL INJURY OR DEATH.

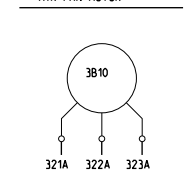
AVERTISSEMENT
 VOLTAGE HASARDEUX!
 DECONNECTEZ TOUTES LES SOURCES ELECTRIQUES INCLUANT LES DISJONCTEURS SITUES A DISTANCE AVANT D'EFFECTUER L'ENTRETIEN.
 FAUTE DE DECONNECTER LA SOURCE ELECTRIQUE AVANT D'EFFECTUER L'ENTRETIEN PEUT ENTRAÎNER DES BLESSURES CORPORELLES SEVERES OU LA MORT.

CAUTION
 USE COPPER CONDUCTORS ONLY!
 UNIT TERMINALS ARE NOT DESIGNED TO ACCEPT OTHER TYPES OF CONDUCTORS.
 FAILURE TO DO SO MAY CAUSE DAMAGE TO THE EQUIPMENT.

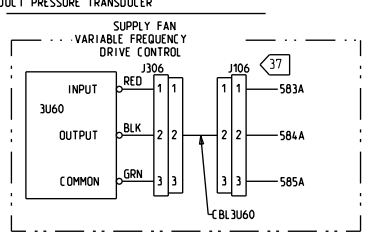
INSET "3F" - SUPPLY AIR FAN MOTORS



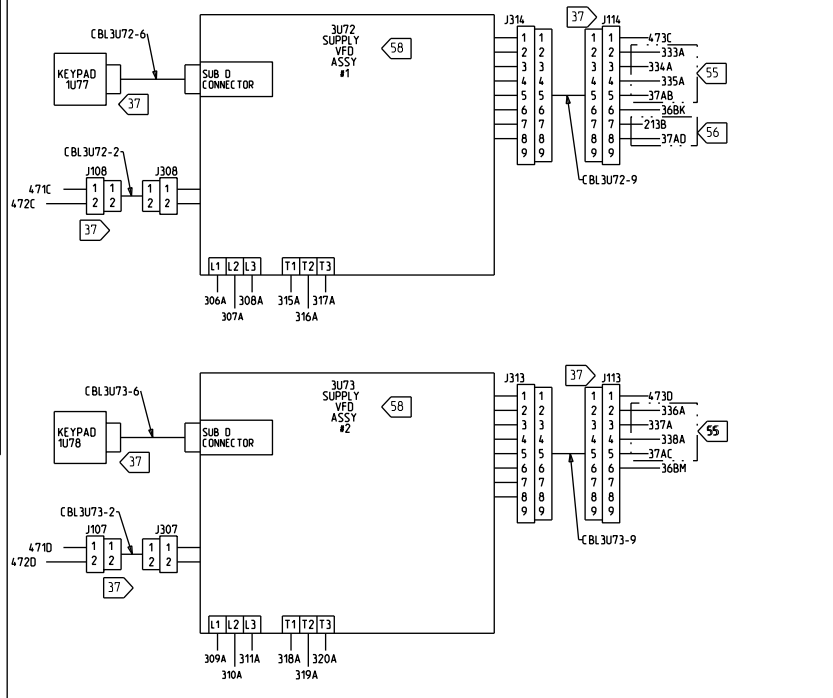
INSET "3G" - EXHAUST AIR FAN MOTOR



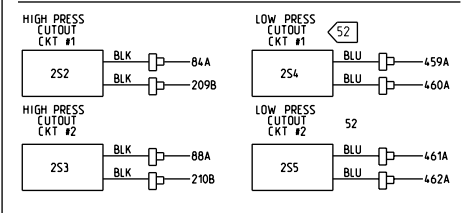
INSET "3I" - SUPPLY AIR DUCT PRESSURE TRANSDUCER



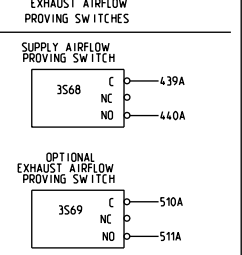
INSET "3AA" - SUPPLY FAN VARIABLE FREQUENCY DRIVES



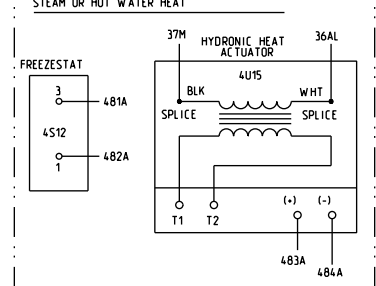
INSET "3D" - HIGH AND LOW PRESSURE CUTOFFS



INSET "3R" - SUPPLY EXHAUST AIRFLOW PROVING SWITCHES



INSET "3V" - OPTIONAL STEAM OR HOT WATER HEAT



INSET "3Z" - EXHAUST FAN VARIABLE FREQUENCY DRIVE

