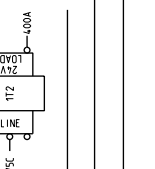
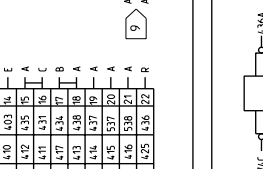
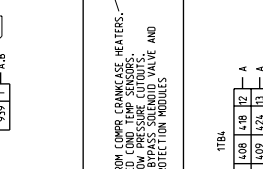
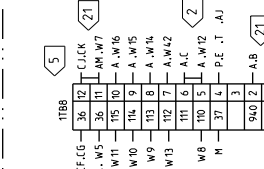
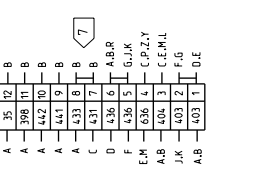
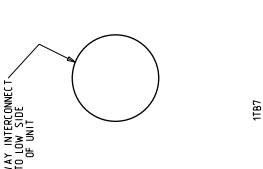
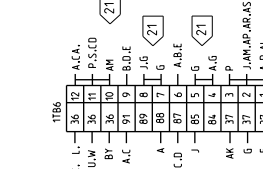
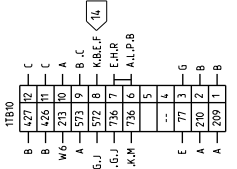
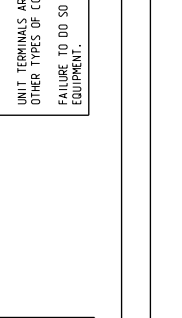
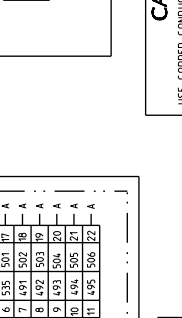
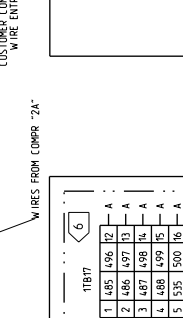
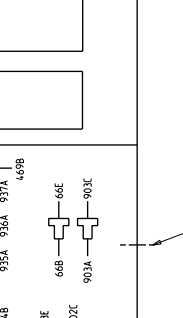
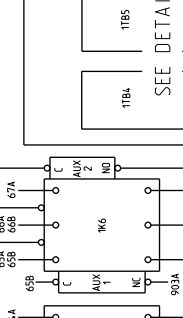
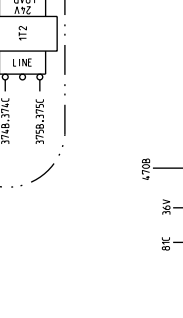
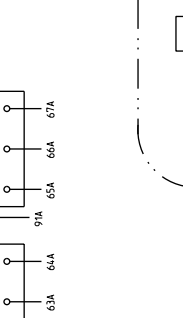
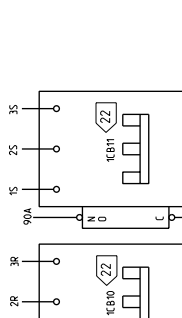
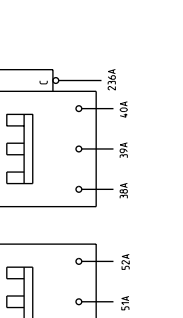
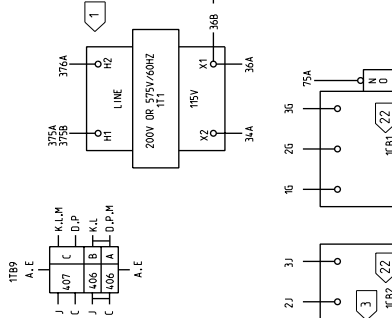
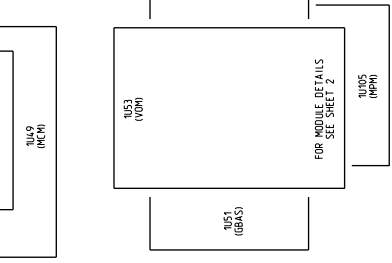
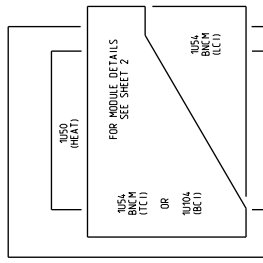
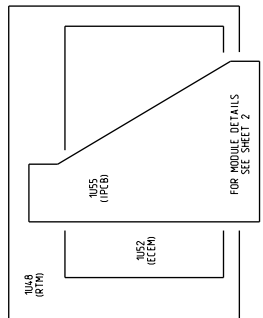
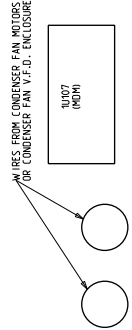
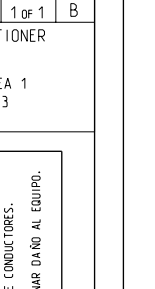
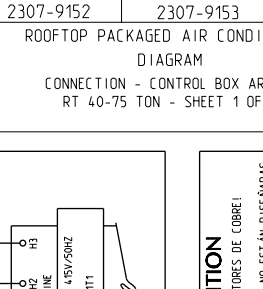
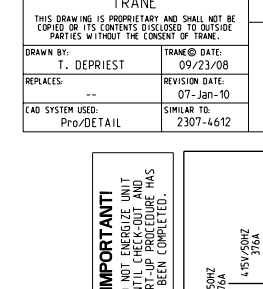
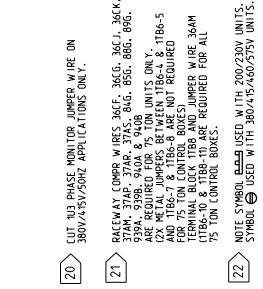
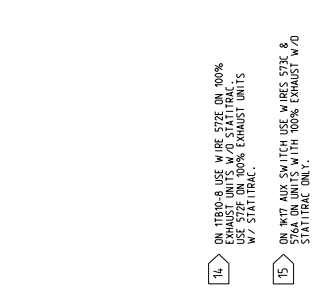


MAIN CONTROL BOX



NOTES:

- 200V/60HZ OR 275V/60HZ TRANSFORMER REQUIRED FOR ALL VOLTAGE CONNECTIONS.
- JUMPER WIRES & TIB6-5 REQUIRED FOR GAS HEAT OR ELECTRIC HEAT OPTION.
- WIRE KIT AND ASSOCIATED WIRING EXHAUST RETURN FAN.
- TIB6 AND ASSOCIATED WIRING REQUIRED WITH ALL HEATING OPTIONS.
- TIB6 REQUIRED FOR ALL 75 TON CONTROL BOXES.
- TIB7 AND ASSOCIATED WIRING REQUIRED WITH OPTIONAL GAS VALVE.
- WHEN HIGH DUCT TEMP T-STAT (LS96-3577) IS USED, TIB7-8 IS REMOVED.
- 230V/60HZ OR 275V/60HZ TRANSFORMER REQUIRED FOR 230V/60HZ OR 275V/60HZ CONNECTIONS.
- JUMPER INSTALLED ONLY ON UNITS WITHOUT ECONOMIZER OPTION.
- #35, #56, #57A AND ASSOCIATED WIRING TO BE INSTALLED ON CONVENIENCE OUTLET OPTION ONLY.



TRANE		FILE NUMBER:	2307-9152	DRAWING NUMBER:	2307-9153	SHEET:	1 OF 1	REV	B
THIS DRAWING IS PROPRIETARY AND SHALL NOT BE COPIED OR ITS CONTENTS DISCLOSED TO OUTSIDE PARTIES WITHOUT THE CONSENT OF TRANE.		ROOF-TOP PACKAGED AIR CONDITIONER							
DRAWN BY:		T. DEPRIEST		TRANE DATE:		09/23/08			
REPLACES:		-		REVISION DATE:		07-Jan-10			
CAD SYSTEM USED:		PRO/DETAIL		SIMILAR TO:		2307-4612			
				DIAGRAM		RT 40-75 TON - SHEET 1 OF 3			

IMPORTANT!
DO NOT ENERGIZE UNIT UNTIL CHECK-OUT AND START-UP PROCEDURE HAS BEEN COMPLETED.

