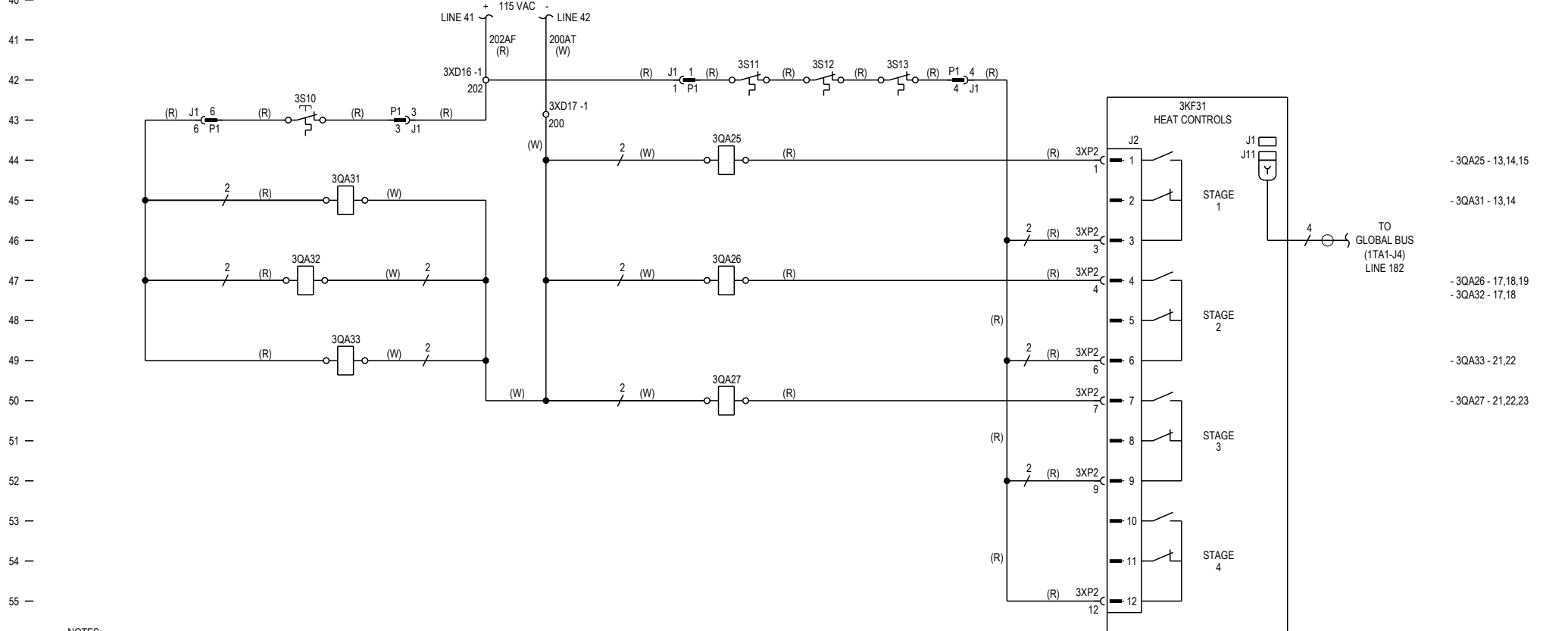
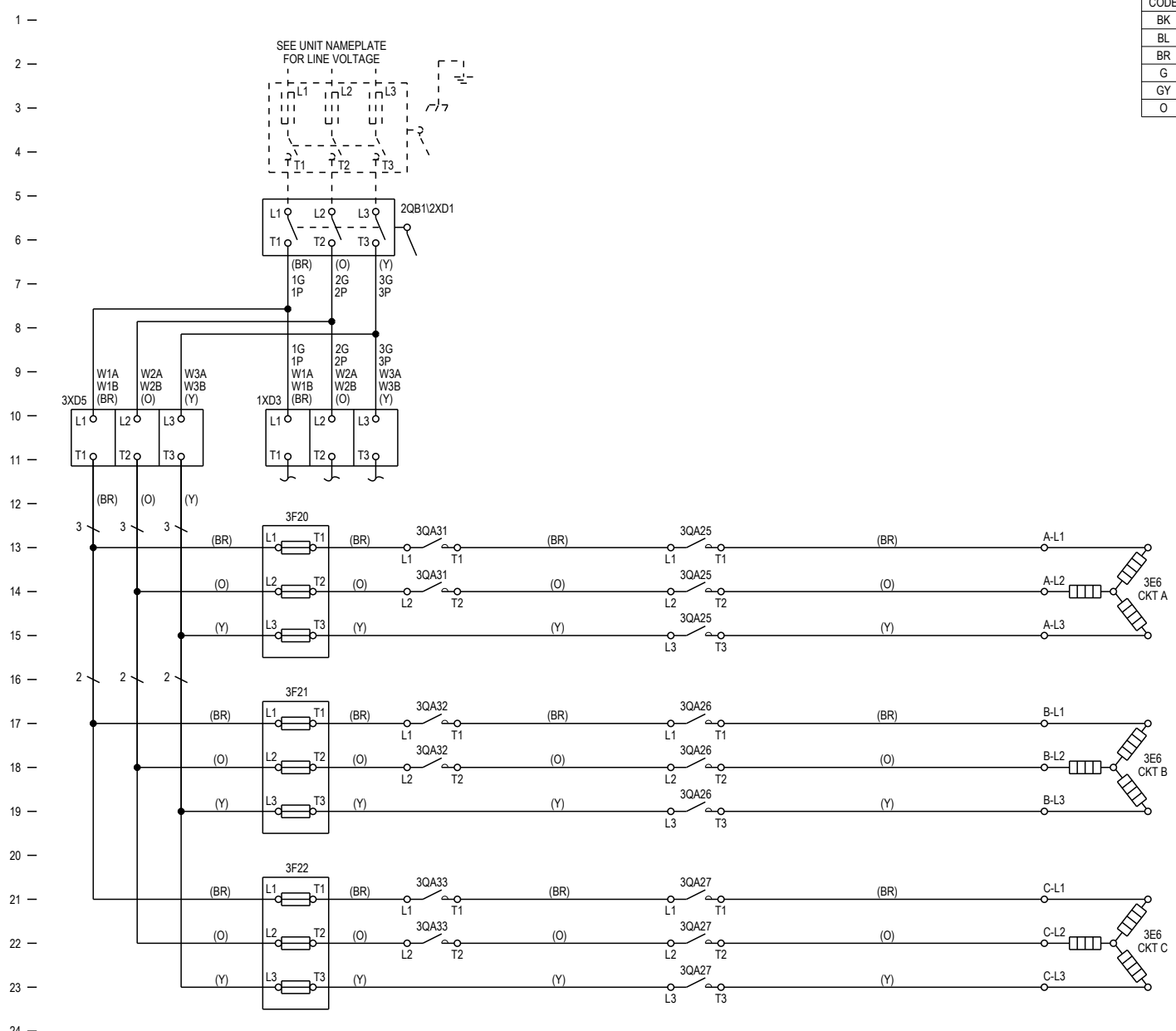


| WIRE COLOR ABBREVIATION CODES | | | |
|-------------------------------|--------|------|-----------|
| CODE | COLOR | CODE | COLOR |
| BK | BLACK | PK | PINK |
| BL | BLUE | R | RED |
| BR | BROWN | TQ | TURQUOISE |
| G | GREEN | V | VIOLET |
| GY | GREY | W | WHITE |
| O | ORANGE | Y | YELLOW |

| LEGEND | | |
|--------------|---------------------------------|-------------------|
| DEVICE DESIG | DESCRIPTION | LINE NUMBER |
| 1XD3 | TERMINAL BLOCK | 10 |
| 2QB112XD1 | MANUAL DISCONNECT/TERM BLOCK | 5 |
| 3E6 | HEATER ELEMENT | 13,17,21,25,29,33 |
| 3F20 | FUSEBLOCK | 13 |
| 3F21 | FUSEBLOCK | 17 |
| 3F22 | FUSEBLOCK | 21 |
| 3KF31 | HEAT CONTROLS | 44 |
| 3QA25 | CONTACTOR - HEAT CIRCUIT A | 13,14,15,44 |
| 3QA26 | CONTACTOR - HEAT CIRCUIT B | 17,18,19,47 |
| 3QA27 | CONTACTOR - HEAT CIRCUIT C | 21,22,23,50 |
| 3QA31 | CONTACTOR - BACK-UP | 13,14,45 |
| 3QA32 | CONTACTOR - BACK-UP | 17,18,47 |
| 3QA33 | CONTACTOR - BACK-UP | 21,22,49 |
| 3S10 | HIGH TEMP LIMIT - MANUAL RESET | 43 |
| 3S11 | HIGH TEMP LIMIT - AUTO RESET #1 | 42 |
| 3S12 | HIGH TEMP LIMIT - AUTO RESET #2 | 42 |
| 3S13 | HIGH TEMP LIMIT - AUTO RESET #3 | 42 |
| 3XD16 | TERMINAL BLOCK - 115 VAC | 42 |
| 3XD17 | TERMINAL BLOCK - 115 VAC COM | 43 |
| 3XD5 | TERMINAL BLOCK | 10 |



- NOTES:
- UNLESS OTHERWISE NOTED, ALL SWITCHES ARE SHOWN AT 25° C (77° F), AT ATMOSPHERIC PRESSURE, AT 50% RELATIVE HUMIDITY, WITH ALL UTILITIES TURNED OFF, AND AFTER A NORMAL SHUTDOWN HAS OCCURRED.
 - DASHED LINES INDICATE RECOMMENDED FIELD WIRING BY OTHERS. DASHED LINE ENCLOSURES AND/OR DASHED DEVICE OUTLINES INDICATE COMPONENTS PROVIDED BY THE FIELD. PHANTOM LINE ENCLOSURES INDICATE ALTERNATE CIRCUITRY OR AVAILABLE SALES OPTIONS. SOLID LINE INDICATES WIRING BY TRANE CO.
 - NUMBERS ALONG THE RIGHT SIDE OF THE SCHEMATIC DESIGNATE THE LOCATION OF CONTACTS BY THE LINE NUMBER. AN UNDERLINED NUMBER INDICATES A NORMALLY CLOSED CONTACT. AN OPEN ARROW BELOW THE LINE NUMBER POINTING UPWARD INDICATES A TIMED CONTACT WHICH BEGINS TIMING WHEN ENERGIZED.

| | |
|------------------|--------------|
| DESIGNER: | K. EDWARDS |
| ENGINEER: | R. ROBINSON |
| TRANE © DATE: | 5/25/18 |
| REPLACES: | --- |
| SIMILAR TO: | --- |
| REVISION DATE: | 8/28/18 |
| REVISED BY: | K. EDWARDS |
| APPROVED BY: | R. ROBINSON |
| CAD SYSTEM USED: | PRO/ DIAGRAM |

TRANE®
 THIS DRAWING IS PROPRIETARY AND SHALL NOT BE COPIED OR ITS CONTENTS DISCLOSED TO OUTSIDE PARTIES WITHOUT THE WRITTEN CONSENT OF TRANE.

| | | | |
|----------------------------------|-----------------|--------|-----|
| INTELLIPAK | | | |
| DIAGRAM | | | |
| SCHEMATIC - ELECTRIC HEAT | | | |
| 90KW - 460V / 575V | | | |
| MASTER NUMBER: | DRAWING NUMBER: | SHEET: | REV |
| 12132834 | 12132838 | 1 OF 1 | B |