




**COMMERCIAL HEATING AND COOLING  
SOLUTIONS**





---

Trane® / Mitsubishi Electric systems are built to provide individual comfort control in any environment. No matter what time of year or part of the country, a room with our system will always be the exact temperature occupants desire. What's more, the unique INVERTER-driven compressor technology makes our systems dramatically more energy efficient than traditional HVAC options.

Whether your building includes a data center or multi-tenant living space, we have a solution that's right for the job. Put our innovation to work for you. Build personalized comfort into your next project.

P-SERIES – Light Commercial Products  
CITY MULTI® – Commercial Products

---

# FLEXIBLE COMFORT SOLUTIONS

---

## INDIVIDUAL COMFORT CONTROL FOR COMMERCIAL APPLICATIONS

Our systems not only bring comfort to tenants, but peace of mind to property owners, engineers, and architects of commercial installations. CITY MULTI® variable refrigerant flow (VRF) zoning systems exceed ASHRAE 90.1 standards. Other features of the CITY MULTI lineup include:

- ▶ Higher capacities throughout the R2-Series simultaneous heat recovery product offering.
- ▶ Innovative PWFY Hydronic Heat Exchanger Units to heat a building's water with recycled energy, significantly increasing energy efficiency.
- ▶ Innovative water source VRF technology provides an energy efficient method of cooling and heating by tapping into an existing geothermal source.
- ▶ A suite of individual zone and centralized system controllers provide an improved occupant comfort experience.

## HYPER-HEATING INVERTER (H2i)

### REVOLUTIONIZING THE HEAT PUMP, AGAIN

The performance capability of our INVERTER-driven compressor systems is well known throughout the industry. Patented Hyper-Heating INVERTER (H2i) technology, found throughout the CITY MULTI and P-Series outdoor unit line-up takes it a step further. With guaranteed heating operation of up to 85% of total capacity at as low as -13° F outdoor ambient, H2i systems can provide year-round comfort, even on the coldest days of the year, and are flexible enough to satisfy almost any commercial renovation or new construction project.

Visit our website [www.trane.com/ductless](http://www.trane.com/ductless) for detailed information and specifications on all of the heating and cooling products listed.

FEATURING

INVERTER

DRIVEN SYSTEMS



# LIGHT COMMERCIAL

SPLIT-DUCTLESS AND DUCTED

## P-SERIES

Large residential, light commercial, and institutional



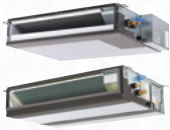
**PKA-A12, 18, 24, 30, 36 - Wall-mounted**  
 Rated Btu/h: 12,000 - 34,200  
 SEER Range: 18.5 - 21.4  
 HSPF Range: 9.2 - 11.0



**PCA-A24, 30, 36, 42 - Ceiling-suspended**  
 Rated Btu/h: 24,000 - 42,000  
 SEER Range: 17.6 - 21.2  
 HSPF Range: 10.0 - 10.8



**PLA-A12, 18, 24, 30, 36, 42 - Ceiling Cassette**  
 Rated Btu/h: 12,000 - 42,000  
 SEER Range: 21.0 - 27.0  
 HSPF Range: 9.3 - 12.8



**PEA-A12, 18AA; PEAD-A24, 30, 36, 42 - Horizontal Ducted**  
 Rated Btu/h: 12,000 - 42,000  
 SEER Range: 13.8 - 14.3 (PEA)  
 16.1 - 21.1 (PEAD)  
 HSPF: 9.9 - 10.8

## P-SERIES FEATURES

- ▶ INVERTER Technology
- ▶ Individual Comfort Control
- ▶ Quiet Operation
- ▶ Ductless and Ducted Models
- ▶ Wired and Wireless Remote Controls
- ▶ Choice of Indoor Unit Styles
- ▶ Robust Cabinet Design



## CONTROLS

COMMERCIAL AND INSTITUTIONAL



**PAR-CT01MAU-SB**  
 Touch MA  
 Touch Screen Controller



**PAR-33MA**  
 Wired MA  
 Remote Controller



**TC-24B**  
 Centralized Touch Screen Controller



**AE-200A**  
 Centralized Controller



**PAR-U01MEDU-K**  
 SmartME LCD  
 Touch Screen Controller



**PAC-YT53CRAU**  
 Simple MA  
 Remote Controller



**DC-A210**  
 Advanced  
 HVAC Controller



**PAC-YG66DCA**  
 Digital In/Digital Out Board



**EW-50**  
 Central Controller and Expansion Controller



**DC-8000**  
 Centralized Building Controller



**LMAP04U-E**  
 LonWorks® Gateway



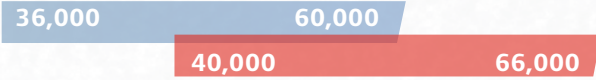
# P-SERIES OUTDOOR UNITS

COOLING

HEATING



PUMY (S-Series) - **Heat Pump** / up to 12 indoor units



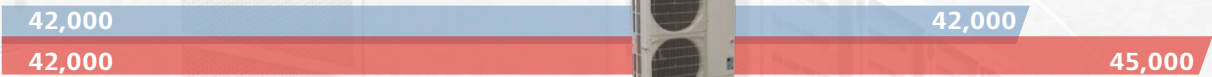
P-Series - **PUY-A12, A18, A36, A42NKA7** Up to 27.0 SEER



P-Series - **PUZ-A12, A18, A36, A42NKA7** Up to 27.0 SEER / Up to 12.8 HSPF



P-Series - **PUY(Z)-A24, A30NHA7** Up to 24.2 SEER / Up to 11.6 HSPF

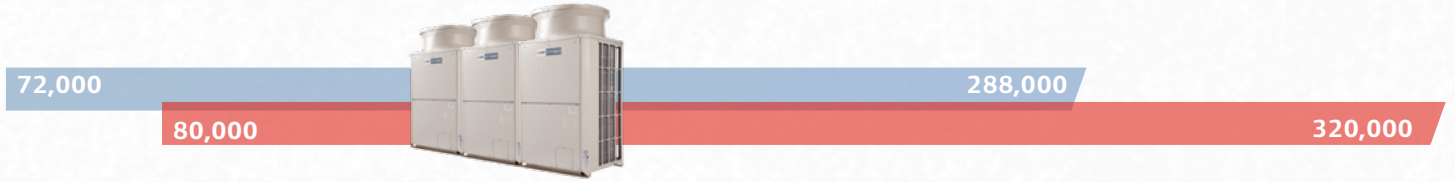


P-Series H2i<sup>®</sup> - **PUZ-HA30, 36NHA4** Up to 17 SEER / Up to 10.4 HSPF

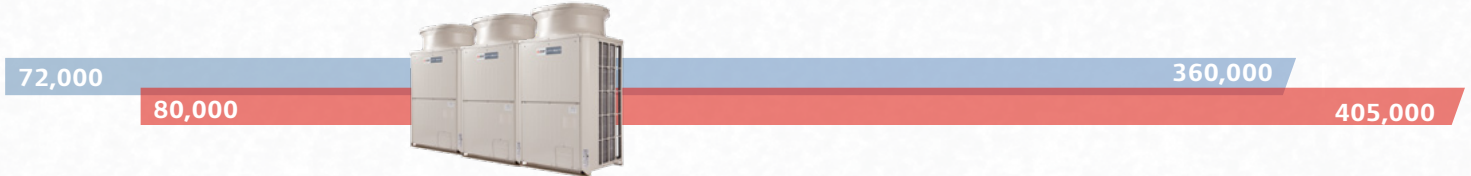


## CITY MULTI® OUTDOOR UNITS

R2-Series - **PURY PxxT/Y(S)LMU Heat Recovery** up to 50 indoor units



Y-Series - **PUHY PxxT/Y(S)LMU Heat Pump** up to 50 indoor units



R2-Series H2i® - **PURY-HPxxT/Y(S)KMU Heat Pump**



Y-Series H2i - **PUHY-HPxxT/Y(S)JMU Heat Pump**



WR2-Series (Water-source) - **PQRY-PxxT/Y(S)LMU Heat Recovery**



WY-Series (Water-source) - **PQHY-PxxT/Y(S)LMU Heat Recovery**



\* M-Series, P-Series: Performance Range, CITY MULTI: Nominal Capacity. Standard rating conditions.

This chart is for general guidance only to illustrate the range of performance capabilities available from M-Series, P-Series, CITY MULTI product lines. Please consult full product specifications for details. Specifications are subject to change without notice.

# COMMERCIAL

## SPLIT-DUCTLESS AND DUCTED

### PKFY-P-NBMU-E2

06  
**PKFY-P-NHMU-E2**  
 08, 12, 15, 18  
**PKFY-P-NKMU-E2**  
 24, 30  
 Wall-mounted  
 Nominal Btu/h: 6,000 - 30,000



### Hydronic Heat Exchangers

PWFY-P36/72NMU-E-AU-Hex Unit  
 PWFY-P36NMU-E-BU Booster Unit  
 Nominal Btu/h: 36,200 - 72,000



### PLFY-P-NFMU-E (2x2)

05, 08, 12, 15, 18  
 4-Way Ceiling Cassette  
 Nominal Btu/h: 5,000 - 18,000



### 100% Outdoor Air PEFY-AF1200CFM/PEFY-AF1200CFMR

Nominal (Cooling) Btu/h: 112,000  
 Nominal (Heating) Btu/h: 61,400



### PLFY-P-NEMU-E (3x3)

08, 12, 15, 18, 24, 30, 36, 48  
 4-Way Ceiling Cassette  
 Nominal Btu/h: 8,000 - 48,000



### PVfy-P-NAMU-E

12, 18, 24, 30, 36, 48, 54  
 Concealed-ducted Vertical/Horizontal Air Handler  
 Nominal Btu/h: 12,000 - 54,000



### PMFY-P-NBMU-ER5

06, 08, 12, 15  
 1-Way Ceiling Cassette  
 Nominal Btu/h: 6,000 - 15,000



## CITY MULTI® VRF ZONING SOLUTIONS

### CITY MULTI FEATURES

- ▶ INVERTER Technology
- ▶ Zone Control
- ▶ Individual Comfort Control
- ▶ Design Flexibility
- ▶ Quiet Operation
- ▶ LonWorks® / BACnet® Interfaces
- ▶ Simultaneous Cooling and Heating (R2- and WR2-Series)

### ENERGY RECOVERY VENTILATORS (ERVs)

Model	CFM
LGH-F300RX5-E1	300
LGH-F470RX5-E1	470
LGH-F600RX5-E1	600
LGH-F1200RX5-E1	1,200

### PEFY-P-NMAU-E3

06, 08, 12, 15, 18, 24, 27, 30, 36, 48, 54  
 Ceiling-concealed (ducted, medium static)  
 Nominal Btu/h: 6,000 - 54,000



### PEFY-P-NMSU-ER2

06, 08, 12, 15, 18, 24  
 Ceiling-concealed, (low-profile ducted),  
 Nominal Btu/h: 6,000 - 24,000



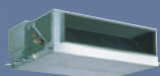
### PEFY-P-NMHU-E2

15, 18, 24, 27, 30, 36, 48, 54  
 Ceiling-concealed (ducted, alternate high-static)  
 Nominal Btu/h: 15,000 - 54,000



### PEFY-P-NMHSU-E

72, 96  
 Ceiling-concealed (high-static)  
 Nominal Btu/h: 72,000 - 96,000



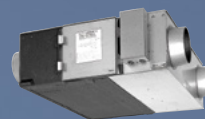
### PCFY-P-NKMU-ERT

15, 24, 30, 36  
 Ceiling-suspended,  
 Nominal Btu/h: 15,000 - 36,000



### PFY-P-NEMU/NRMU-E

06, 08, 12, 15, 18, 24  
 Floor-Standing (exposed/concealed)  
 Nominal Btu/h: 6,000 - 24,000





## The Solution for All Building Applications

The needs of your building dictate the type of HVAC system required. The flexibility and efficiency of VRF systems make them an excellent choice for virtually any application.

©2018 Mitsubishi Electric Trane US HVAC, LLC. All rights reserved. Mitsubishi Electric, Lossnay, and the three-diamond logo are trademarks of Mitsubishi Electric Corporation and Trane and the Trane logo are trademarks of Trane International Inc. CITY MULTI, kumo cloud and H2i are registered trademarks of Mitsubishi Electric US, Inc. All other product names mentioned herein are trademarks or registered trademarks of their respective owners.

VRF-SLB019-EN | 06.2018

For more information visit  
[www.trane.com/ductless](http://www.trane.com/ductless)