

Reciprocating Service Compressors



Trane ReSpecT compressors: OEM quality and performance



Model F

large and small barrel
Available tonnage:
15, 20, 25, 30, and 40



Model R

Available tonnage:
35, 40, 50, and 60



Model E

large and small barrel
Available tonnage:
40, 50, 60, 75 and 100



Model M

Available tonnage:
15, 16, 20, 25, and 40

ReSpecT™ is Trane's premium, value-added, OEM remanufactured compressor option.

ReSpecT means Remanufactured to the current OEM Specifications by Trane—using only fully-qualified Trane compressor parts.

First year system hazard warranty:

If your compressor fails in the first year, Trane will replace the first failure regardless of cause.

100% Trane: Remanufactured by Trane, to Trane specifications, using only original Trane parts. Trane's dependable worldwide reputation is evident in the manufacturing and performance of its ReSpecT compressors.

National availability: With inventory stock locations located throughout the United States, Trane is positioned to respond to your emergency needs quickly.

OEM specifications: Trane remanufactures ReSpecT compressors to Trane OEM specifications using original Trane Parts.

Rigorous testing: ReSpecT compressors pass factory tests, including a complete operational run-in test, to ensure quality, performance, and dependability.

Reduced cost: Purchasing a high-quality Trane ReSpecT compressor allows you to receive a "like-new" compressor at a lower cost.

UL listed: Nationally recognized safety and fire standards apply to all compressors (except Model F).

ReSpecT warranty

The Trane ReSpecT compressor includes a two-year standard material and manufacture warranty and a first-year system hazard warranty, excluding labor.

The system hazard warranty provides a replacement compressor for the first operational failure during the first year regardless of cause.

For the balance of the remaining two-year warranty, the warranty provides a replacement compressor and all inbound and outbound freight, if the compressor is determined to have failed due to defective material or manufacture.

If an optional labor warranty is purchased in conjunction with the compressor, the labor warranty will be honored on the first failure regardless of cause.

Optional add-on warranties

ReSpecT compressor parts warranty

- 3–5 year

Compressor labor warranty

- 60 days, 12 months or 24 months

Contact your local Trane Parts Centers for details.

Trane ReSpecT compressor

Remanufactured to Trane's OEM standards, the most demanding in the world

Model E	40, 50, 60, 75, and 100 ton
Model F	15, 20, 25, 30, and 40 ton
Model M	15, 20, 25, and 30 ton
Model R	35, 40, 50, and 60 ton
Model K	20, 25, and 30 ton



Carrier 06D

Available tonnage:
6.7, 8, 9, and 12.5



Carrier 06E

Available tonnage:
20, 25, 30, and 40



Carrier 5F and 5H

Available tonnage:
40, 60, 80, and 120



Copeland 4R and 6R

Available tonnage:
20, 25, 30, 35, and 40

**Trane, Carrier, Copeland:
value alternative—Series 6000**

Trane, Carrier and Copeland service compressors are reliable and economical. Most importantly, they are backed by Trane.

Series 6000 compressors are remanufactured by a Trane-selected remanufacturer to comply with Trane standards.

- Trane, Carrier and Copeland
- Remanufactured to industry standards, including disassembly, inspections, multistage cleaning/burnishing, polishing and/or grinding of valve plates and crankshafts, and machining cylinders to industry specifications
- Industry-standard 1 year warranty
- Copeland provides model flexibility
- Backed by Trane
- Optional labor warranties are offered for purchase
- Optional 2–5 year warranty (except Trane)

Series 6000 warranty information

The Trane Series 6000 compressor includes a standard one-year material and manufacture warranty.

If an optional labor warranty is purchased in conjunction with the compressor, the labor warranty will be honored for failures due to material defect.

Optional add-on warranties

Series 6000 compressor parts warranty (Carrier and Copeland only)

- 2–5 year

Compressor labor warranty

- 12 months

Contact your local Trane Parts Centers for details.

Series 6000 compressor

A competitive line of remanufactured compressors with a range of warranty options

Trane	
Model A/B	10 through 75 ton
Model E	40 through 100 ton
Model F	15 through 40 ton
Model M	15 through 30 ton
Model R	35 through 60 ton
Carrier	
Model 06D	6.7, 8, 9, and 12.5 ton
Model 06EX/ET	20, 25, 30, and 40 ton
Model 5H	40 through 120 ton
Copeland	
Model 4R	20, 25, and 30 ton
Model 6R	30, 35, and 40 ton

Trane remanufacturing expertise at work



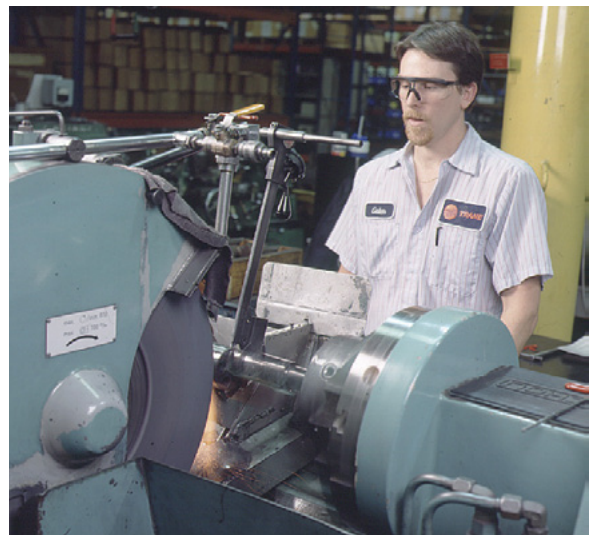
1. Disassembly: The process begins with a complete disassembly. All parts that have been redesigned for upgrades or other specification changes are discarded or set aside for modification.



2. Cleaning: Every part is thoroughly cleaned, removing paint, rust, oil, acids, and metal fragments.



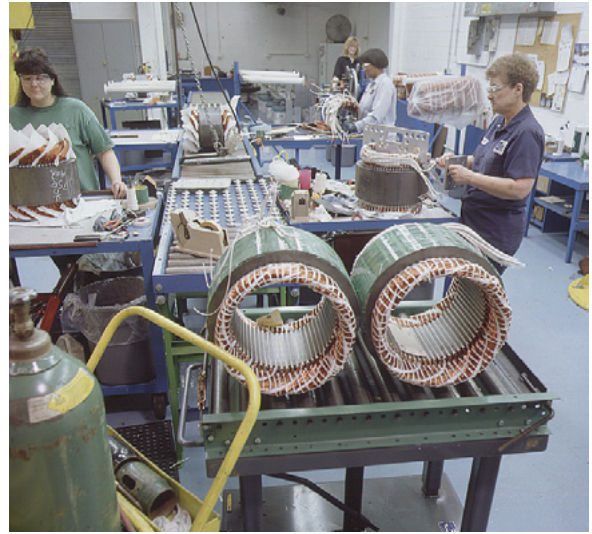
3. Inspection: Parts are inspected against OEM specifications, with checks for wear, cracks, scoring, or other damage. Calibrated instruments aid in this effort.



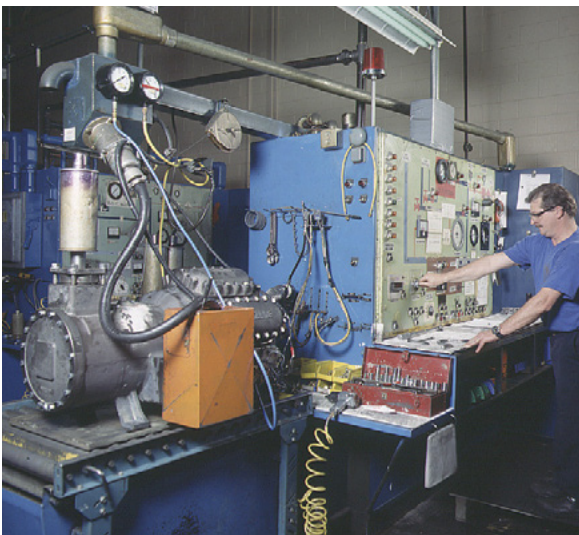
4. Machining: Parts are gauged, replated, and reground to the original OEM tolerance. Welding on crankshafts is not permissible.



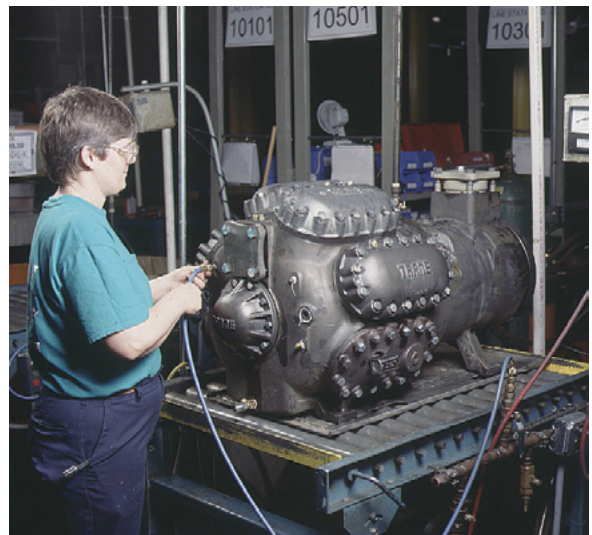
5. Subassembly: New or requalified parts are reassembled into rod and piston, valve cage, hand hole control covers, and oil pump subassemblies.



6. Motor rewinding: Motors are rewound for optimum magnetic performance, using the best available wire product.



7. Final assembly: Technicians test oil lines and assemble all parts and subassemblies in preparation for testing.



8. Testing: Comprehensive testing procedures include running the compressor on a stand. All performance measures are verified to meet or exceed OEM standards. The unit is then repainted.

Trane is your best resource for remanufacturing solutions

Trane's aftermarket compressor offering provides our customers with the reliability, affordability, availability, and flexibility demanded in today's competitive market. With over 60 years of experience, Trane has the infrastructure and expertise necessary to deliver the highest quality, no matter what the customer's system, budget, or brand requirements might be.

Reliability

Trane, Carrier and Copeland reciprocating service compressors are remanufactured to Trane's quality expectations, ensuring that they will meet their original performance and efficiency standards. Trane backs its high level of reliability and quality with the system hazard and two-year warranties for ReSpecT™ compressors and one-year warranty for Series 6000 compressors. Extended warranties are also available.



Affordability

Remanufactured compressors allow you to utilize existing equipment versus purchasing an entirely new system. Your savings will allow more flexibility in allocating resources.

Availability

Local inventory carried by Trane Parts Centers, in addition to regional inventory located throughout the United States, ensure that Trane is positioned to respond to your most urgent compressor needs.

Flexibility

Trane offers a full line of Trane compressors as well as a range of Carrier and Copeland models for the HVAC industry.

Trane Parts Centers supply compressor parts and accessories and valuable staff expertise at hundreds of locations worldwide.

Responsibility for the environment

Extending compressor life through aftermarket recycling saves the natural resources typically used in the manufacturing process, and also reduces the need for landfill capacity for longer periods.

Choose Trane to be your dedicated remanufactured compressor partner. Carrier is a registered trademark of Carrier Corp. Copeland is a registered trademark of Copeland Corp.

Learn more at trane.com



Trane – by Trane Technologies (NYSE: TT), a global climate innovator – creates comfortable, energy efficient indoor environments through a broad portfolio of heating, ventilating and air conditioning systems and controls, services, parts and supply. For more information, please visit trane.com or tranetechnologies.com.

All trademarks referenced in this document are the trademarks of their respective owners.

© 2020 Trane. All Rights Reserved.

RSP-SLB094-EN
07/06/2020