

Start To Finish

Control your environment



Its sleek styling and white color blend beautifully into any decor.

High Resolution Full Color Touch Screen Display Digital Thermostat

All models have these standard features

- Gas Electric or Heat Pump Control
- Switchable Programmable or Non-programmable
- Set Point Limiting
- Indoor/Outdoor Sensor Ready
- Choice of English, Spanish or French
- Customizable Screensaver* & Customizable Wallpaper*
- Wall plate available (model SFTHATSWP)



5.2" w x 4.0" h x 1" d

Residential

Model SFTHRTS742

- 4 Heat / 2 Cool
- Dual Fuel Capable
- Programmable Fan

Model SFTHRTSH742

- All the same features as SFTHRTS742 but with Humidification and Dehumidification control

Commercial

Model SFTHCTS742

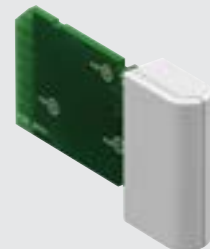
- 4 Heat / 2 Cool
- Up to 3 Occupied Periods
- 365 Day Calendar for Holiday programming
- Security Lock w/Passcode
- Preoccupancy Fan Purge

Model SFTHCTSH742

- All the same features as SFTHCTS742 but with Humidification and Dehumidification control

Accessories

SFTHATSWIFI
Thermostat Wi-Fi
Internet Access Module



SFTHATSSSEN Touch
Screen Outdoor/Indoor
Temperature Sensor



SFTHAADDWIRE
Add-A-Wire

Premier Series Thermostats

Residential and Commercial

All models have these standard features

- Backlit Display
- Aux Heat Indicator
- Outdoor Sensor Ready
- Accepts RF Module for wireless Remote Sensors
- Wall plate available (model SFTHAPWP)
- Accepts USB Programmer for easy programming and error message displays



5.2" w x 4.4" h x 1.1" d

Residential

Model SFTHRPH742

- 4 Heat / 2 Cool
- 1, 5+2 or 7-day programmable
- Dual Fuel Capable
- Remote Sensor Ready
- Controls Humidification, Dehumidification & Reheat
- Programmable Output for Free Cooling, Ventilation, and more

Model SFTHRP742

- 4 Heat / 2 Cool
- 1, 5+2 or 7-day programmable
- Remote Sensor Ready

Model SFTHRP121

- 2 Heat / 1 Cool
- Single day or Non-Programmable
- Auto or Manual Changeover

Commercial

Model SFTHCPH742

- 4 Heat / 2 Cool
- 3 occupied time periods
- Remote Sensor Ready
- Setpoint Limiting
- Light Activation Equipped
- Economizer Control
- Preoccupancy Fan Purge
- Programmable Output for Free Cooling, Ventilation, and more

Model SFTHCP742

- 4 Heat / 2 Cool
- 3 occupied time periods
- Setpoint Limiting

Model SFTHCPH022

- 2 Heat / 2 Cool
- Non-programmable
- Controls Humidification, Dehumidification & Reheat
- Setpoint Limiting
- Remote Sensor Ready

Accessories



SFTHAPUSB
USB Programmer



SFTHAPLOCK
Lock Ring



SFTHAPSENREC
RF Module



SFTHAPSENRF
RF Wireless Remote

Value Series Thermostats

All models have these standard features

- Battery or system powered
- Extremely simple to operate
- Millivolt Compatible
- No 'C' (common) wire needed with batteries installed
- Wall plate available (model SFTHAVWP)

5.5" w x 3.6" h x 1.1" d



Model SFTHRV011

- 1 Heat / 1 Cool
- Non-programmable
- RC/RH Terminals
- Gas/electric or Heat Pump

Model SFTHRV5211

- 1 Heat / 1 Cool
- 5+2 programmable
- RC/RH Terminals
- Gas/electric or Heat Pump

Model SFTHRVHP021

- 2 Heat / 1 Cool
- Non-programmable
- Heat pump
- Aux Heat

Model SFTHRVHP5221

- 2 Heat / 1 Cool
- 5+2 programmable
- Heat pump
- Aux Heat

Touch Screen *Attendant*

Create your picture gallery, adjust the settings, configure the schedule, add dealer information and upgrade firmware for new features.



With Touch Screen Attendant you may:

- Create & customize screensavers
- Customize wallpaper backgrounds
- Add your dealer logo and contact information
- Configure the installation settings
- Edit the time period schedule
- Update the thermostat's firmware for performance enhancements and new features

With Touch Screen Attendant you can import and edit your photos from a drive on your computer, prepare them for use as the thermostat's screen saver, or choose a photo for a custom wallpaper background.

Touch Screen Attendant allows you to configure your time period schedule and adjust your thermostat's installation settings from the comfort of your laptop or desktop computer.

Dealers may use this application to import their logo and contact information to the Touch Screen thermostat.

Each time Touch Screen Attendant opens it checks with the website for any application updates and the latest thermostat firmware.



Trane – by Trane Technologies (NYSE: TT), a global climate innovator – creates comfortable, energy efficient indoor environments through a broad portfolio of heating, ventilating and air conditioning systems and controls, services, parts and supply. For more information, please visit trane.com or tranetechnologies.com.

All trademarks referenced in this document are the trademarks of their respective owners.

© 2020 Trane. All Rights Reserved.

PART-SLB008-EN
06/16/2020