

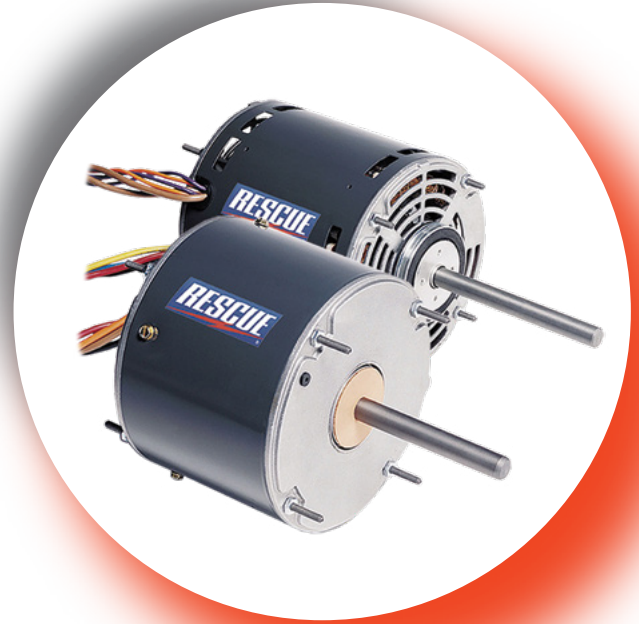
Now You'll Always Have a Motor When You Need It



Rescue® Series Motors are available in two types; a multi-horsepower furnace/air handler motor and a multi-horsepower condenser fan motor. Both residential and light commercial motors give contractors a one size fits all flexibility when out in the field.

The number of motor designs that original equipment manufacturers use on outdoor condensing and furnace blower units is substantial and only continues to rise. This makes having the exact replacement motor a nearly impossible task for the contractor.

By having a full truck stocked with Rescue® Motors the contractor will have the versatile, reliable product on board that will save time and effort in locating a specific motor and prevent lost time hours.



Rescue® Motors will eliminate the need for "make do" substitutions, unnecessary trips to a distributor and emergency openings in the evening.



Direct drive fan and blower motors

MOT09985 5460 replaces 115V ½ to ⅓ HP
 MOT09986 5461 replaces 208-230V ½ to ⅓ HP
 Weight 15 lbs.

- 48 frame, 5.6" diameter
- 1075 RPM applications
- Mounts with thru-bolts, shell holes or belly band
- 36" leads
- Extended mounting studs
- 2.5" diameter hub rings included
- Reversible rotation
- All-position mount

MOT10274 5470 replaces 115V ¾ to ½ HP
 MOT10275 5471 replaces 208-230V ¾ to ½ HP
 Weight 22 lbs.

- Same as 5460 and 5461, but features ¾ HP and ball-bearing design



Condenser fan motors

MOT11099 for 825 RPM ⅓ to ⅓ HP
 MOT09987 for 1075 RPM ⅓ to ⅓ HP
 MOT11100 for 1075 RPM ½ to ⅓ HP

- 48 frame, 5.6" diameter
- 208-230V
- 60° C ambient rated
- Mounts with thru-bolts, shell holes or belly band
- 36" leads
- Extended mounting studs
- Reversible rotation
- All-position mount totally enclosed
- Flat lead end for shaft down applications

Motor to replace	Speeds to use* (color/approx. RPM)				
	Cooling	Heating	370 V capacitor	5460 115V FLA	5461 208-230V FLA
½ HP	High (black/1100)	Med-Hi (blue/1050) or Med-Low (yellow/825)	10 mfd	7.3	3.6
½ HP	High (black/1120)	Med-Hi (blue/1090) or Med-Low (yellow/1030)	5 mfd**	6.9	3.5
¼ HP	Med-Hi (blue/1125)	Med-Low (yellow/1090) or Low (red/1010)	5 mfd**	5.5	2.8
½ HP	Med-Low (yellow/1110)	Low (red/1060)	5 mfd**	3.6	1.9
½ HP	Low (red/1085)	Low (red/1085)	5 mfd**	2.8	1.3

**Using a 7.5 mfd/370V capacitor will result in an approximately 10% stronger motor. This can be used where there is more air flow needed.

Motor to replace	Speeds to use* (color/approx. RPM)				
	Cooling	Heating	370 V capacitor	5470 115V FLA	5471 208-230V FLA
¾ HP	High (black/1110)	Med-Hi (blue/1080) or Med-Low (yellow/1010)	20 mfd	8.1	3.8
½ HP	High (black/1130)	Med-Low (yellow/1090) or Low (red/1035)	10 mfd	6.6	3.7
⅓ HP	Med-Hi (blue/1150)	Med-Low (yellow/1130) or Low (red/1100)	10 mfd	4.6	2.5
¼ HP	Med-Low (yellow/1150)	Low (red/1130)	10 mfd	3.8	1.8
⅓ HP	Low (red/1140)	Low (red/1140)	10 mfd	3.1	1.7

Motor to replace	Speeds to use (color/RPM)*	208V Capacitor MFD***	230V Capacitor MFD***	FLA
5464 (208-230V) • 825 RPM Applications • Weight 18 lbs.				
½ HP	High (Black/825)	10	7.5	1.9
¼ HP	High (Black/835)	10	7.5	1.5
½ HP	Low (Red/825)	10	7.5	1.2
½ HP	Low (Red/835)	10	7.5	1.0
5462 (208-230V) • 1075 RPM Applications • Weight 14 lbs.				
½ HP	High (Black/1110)	7.5	5	2.6
¼ HP	High (Black/1135)	7.5	5	2.5
½ HP	Low (Red/1110)	7.5	5	2.0
½ HP	Low (Red/1125)	7.5	5	1.8
5465 (208-230V) • 1075 RPM Applications • Weight 19 lbs.				
½ HP	High (Black/1110)	12.5	10	3.0
½ HP	High (Black/1135)	12.5	10	2.2
¼ HP	Low (Red/1110)	12.5	10	1.6
½ HP	Low (Red/1125)	12.5	10	1.3



Emerson Climate Technologies™ and the Emerson Climate Technologies™ logo are the trademarks and service marks of Emerson Electric Co. and are used with the permission of Emerson Electric Co. Rescue® is a trademark and service mark of Emerson Motors. All other trademarks are the property of their respective owners. © 2006 Emerson Climate Technologies, Inc. All rights reserved. Printed in the USA.



Trane – by Trane Technologies (NYSE: TT), a global climate innovator – creates comfortable, energy efficient indoor environments through a broad portfolio of heating, ventilating and air conditioning systems and controls, services, parts and supply. For more information, please visit trane.com or tranetechnologies.com.

All trademarks referenced in this document are the trademarks of their respective owners.

© 2020 Trane. All Rights Reserved.

MOTR-SLB002-EN
 07/17/2020