



Stylus 4G



Mini Split Air Conditioners

Stylus 4G Series
Convertible Type
12,000 - 60,000 Btu/h
MCX / MWX SERIES
50 Hz R22 / R410a



Stylus 4G Comfort Solutions

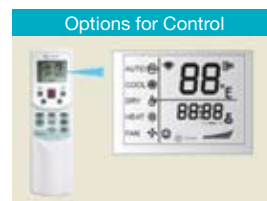
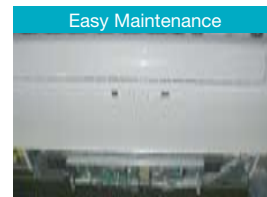
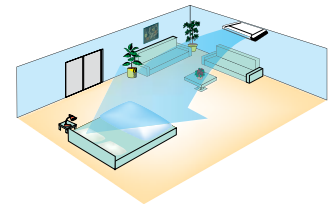
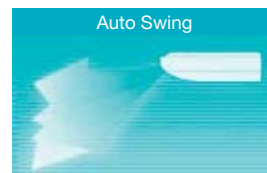
Trane proudly presents the Stylus 4G air conditioners - a clever blend of art and indigenous design. Built according to the Trane worldwide quality standards, the Stylus 4G provides convenient, reliable, energy efficient and comfortable cooling / heating.

Quality & Durability

To provide and ensure years of trouble-free comfort, all major components of Trane air conditioners are individually inspected and tested including a run-test prior to shipment from factory.

Features

- New modern and elegant design
- Compact size
- Low noise level
- Auto swing
 - Vertical & Horizontal auto swing
 - Four - way auto adjustment for better air distribution
- Specially treated drain pan for better indoor air quality
- Controls - infrared wireless remote / wired controller
- Emergency manual operation: in case the controller is lost or damaged
- Built-in Auto-restart function automatically operates with previous setting, when power resumes
- 3-minute time delay protects against power interruption and rapid compressor cycling which ensure system durability
- Low maintenance
- Easy access
 - For filter cleaning
 - To fan blower & control for maintenance
- Flexibility to connect condensate drain pipe from either side (left or right)
- Optional
 - Built in water pump
 - Low ambient-kit available to operate upto - 15°C on heat pump models



High Efficiency Condensing Unit

- High efficiency
- Low noise level
- Compact size
- Easy installation
- Valve protection cover
- Galvanized steel with a powder paint finish for corrosion resistance
- Options : Golden fin

Wireless Remote Control

- Wide display screen
- Mode: auto / cool / heat / dry / fan only
- Temperature setting range: 17 - 30°C
- 24 hours programmable timer
- Auto swing control - Vertical / Horizontal



Specifications: R410a - 50Hz Cooling

Unit Model	Indoor Model		Power Supply (V / Ph / Hz)	Nominal Capacity Btu / h	Power Input W	System Current A	MCX512SB04RA TTK512SRB04XA 220V - 1Ph - 50Hz	MCX518SB04RA TTK518SRB04XA 220V - 1Ph - 50Hz	MCX524SB04RA TTK524SRB04XA 220V - 1Ph - 50Hz	MCX530SB04RA TTK530SSB04XA 220V - 1Ph - 50Hz	MCX536SB04RA TTK536SSB04XA 220V - 1Ph - 50Hz	MCX536SB04RB TTK536SSC04XB 380V - 3Ph - 50Hz	MCX548SB04RB TTK048SSC04XB 380V - 3Ph - 50Hz	MCX060SB04RB TTK060SSC04XB 380V - 3Ph - 50Hz	
	Outdoor Model	Outdoor Model													
Electrical Data															
Performance Data															
Cooling Mode															
Indoor Units															
Power Input (Fan Motor)															
Air Flow (H / M / L)															
Sound Data (H / L)															
Dimensions															
Uncrated / Crated															
Outdoor Units															
Rated Power Input (Compressor / Fan Motor)															
Rated Current (Compressor)															
Expansion Device															
Compressor															
Fan Motor															
Fan															
Sound Data															
Dimensions															
Uncrated / Crated															
Refrigerant Pipe Size															
Refrigerant / Charge															

(1) Sound data @ distance of 1 Meter from source

Specifications: R22 - 50Hz Cooling & Heat Pump

Unit Model	Indoor Model		Power Supply (V / Ph / Hz)	MWX512SB00RA TWK512SRB00XA 220 - 240V - 1Ph 50Hz	MWX518SB00RA TWK518SRB00XA 220 - 240V - 1Ph 50Hz	MWX524SB00RA TWK524SRB00XA 220 - 240V - 1Ph 50Hz	MWX536SB00RA TWK536SSB00XA 220 - 240V - 1Ph 50Hz	MWX536SB00RB TWK536SSC00XB 380V - 3Ph 50Hz	MWX048SB00RB TWK048SSC00XB 380V - 3Ph 50Hz	MWX060SB00RB TWK060SSC00XB 380V - 3Ph 50Hz
	Outdoor Model	Power Supply								
Performance Data										
Cooling Mode	Nominal Capacity	Btu / h	12,000	18,000	24,000	36,000	36,000	48,000	60,000	
	Power Input	W	1,278	1,979	2,630	3,315	3,530	4,699	5,316	
	System Current	A	6.1	8.5	13.2	21	6.5	8.2	10	
Heating Mode	Nominal Capacity	Btu / h	13,156	19,776	28,272	33,891	36,119	45,137	50,013	
	Power Input	W	1,145	1,857	2,760	3,464	3,930	4,210	5,003	
	System Current	A	8	8	13.6	20.5	5.8	8.6	10.5	
Indoor Units										
Power Input (Fan Motor)	W	33.4 / 31.1 / 29.5	125 / 105 / 85	125 / 105 / 85	125 / 105 / 85	143 / 122 / 110	143 / 122 / 110	179 / 163 / 155	179 / 163 / 155	
Air Flow (H / M / L)	Cfm	350 / 280 / 235	470 / 350 / 295	705 / 530 / 410	940 / 705 / 590	940 / 705 / 590	940 / 705 / 590	1,175 / 1,060 / 940	1,295 / 1,060 / 940	
Sound Data (H / M / L)	dBA	37 / 35 / 33	38 / 36 / 34	39 / 37 / 34	41 / 39 / 36	41 / 39 / 36	41 / 39 / 36	43 / 42 / 40	45 / 44 / 42	
	Width	mm	990	990	990	1,280	1,280	1,670	1,670	
	Height	mm	660	660	660	660	660	680	680	
Dimensions	Depth	mm	206	206	206	206	206	240	240	
	Weight	kg	27 / 33	27 / 33	27 / 33	35 / 40	35 / 40	52 / 59	52 / 59	
Outdoor Units										
Rated Power Input (Compressor / Fan Motor)	W	1,295 / 69	2,020 / 98	2,650 / 155	3,510 / 296	3,800 / 296	4,636 / 296	5,450 / 296		
Rated Current (Compressor)	A	6	10.3	12.6	16.8	6.8	9.4	9.3		
Expansion Device	Type	Capillary	Capillary	Capillary	Capillary	Capillary	Capillary	Capillary		
Compressor	Type	Rotary	Rotary	Rotary	Scroll	Scroll	Scroll	Scroll		
Fan Motor	Speed	865	640	805	740	740	740	800		
Fan	Type - Number	Axial - 1	Axial - 1	Axial - 1	Axial - 1	Axial - 1	Axial - 1	Axial - 1		
Sound Data	dBA	43	52	53	55	55	57	62		
	Width	mm	780	895	990	990	990	940		
	Height	mm	547	695	862	966	966	1,245		
Dimensions	Depth	mm	250	324	313	354	354	360		
	Weight	kg	34 / 36	53 / 57	64 / 66	96 / 106	96 / 106	110 / 122		
Refrigerant Pipe Size	Suction	inch	1 / 2	1 / 2	5 / 8	3 / 4	3 / 4	3 / 4		
	Liquid	inch	1 / 4	1 / 4	3 / 8	1 / 2	1 / 2	1 / 2		
Refrigerant / Charge	g	R22 / 850	R22 / 1,950	R22 / 2,300	R22 / 2,800	R22 / 2,500	R22 / 3,100	R22 / 3,900		

(1) Sound data @ distance of 1 Meter from source.

Specifications: R22 - 50Hz Cooling

Unit Model	Indoor Model	MCX512SB00RA	MCX518SB00RA	MCX524SB00RA	MCX536SB00RA	MCX536SB00RB	MCX048SB00RB	MCX060SB00RB
Outdoor Model	Outdoor Model	TTK512SRB00XA	TTK518SRB00XA	TTK524SRB00XA	TTK536SSB00XA	TTK536SSC00XB	TTK048SSC00XB	TTK060SSC00XB
Electrical Data	Power Supply (V / Ph / Hz)	220V - 1Ph - 50Hz	220V - 1Ph - 50Hz	220V - 1Ph - 50Hz	220V - 1Ph - 50Hz	380V - 3Ph - 50Hz	380V - 3Ph - 50Hz	380V - 3Ph - 50Hz
Performance Data								
Cooling Mode	Nominal Capacity	Btu/h	18,000	24,000	36,000	36,000	48,000	60,000
	Power Input	W	1,379	2,821	3,660	3,820	5,180	5,610
	System Current	A	6.1	14.1	21	7.1	9	10
Indoor Units								
Power Input (Fan Motor)	W	33.4 / 31.1 / 29.5	125 / 105 / 85	125 / 105 / 85	143 / 122 / 110	143 / 122 / 110	179 / 163 / 155	179 / 163 / 155
Air Flow (H / M / L)	Cfm	350 / 280 / 235	470 / 350 / 295	705 / 530 / 410	940 / 705 / 590	940 / 705 / 590	1,175 / 1,060 / 940	1,295 / 1,060 / 940
Sound Data (H / M / L)	dBA	37 / 35 / 33	38 / 36 / 34	39 / 37 / 34	41 / 39 / 36	41 / 39 / 36	43 / 42 / 40	45 / 44 / 42
	Width	mm	990	990	1,280	1,280	1,670	1,670
Dimensions	Height	mm	660	660	660	660	680	680
	Depth	mm	206	206	206	206	240	240
Uncrated / Crated	Weight	kg	27 / 33	27 / 33	35 / 40	35 / 40	52 / 59	52 / 59
Outdoor Units								
Rated Power Input (Compressor / Fan Motor)	W	1,355 / 69	2,020 / 98	2,650 / 155	3,510 / 296	3,800 / 296	4,636 / 296	5,450 / 296
Rated Current (Compressor)	A	6.3	10.3	12.6	16.8	6.8	9.4	9.3
Expansion Device	Type	Capillary	Capillary	Capillary	Capillary	Capillary	Capillary	Capillary
Compressor	Type	Rotary	Rotary	Rotary	Scroll	Scroll	Scroll	Scroll
Fan Motor	Speed	RPM	865	805	740	740	740	800
Fan	Type - Number	Axial - 1	Axial - 1	Axial - 1	Axial - 1	Axial - 1	Axial - 1	Axial - 1
Sound Data	dBA	43	52	53	55	55	57	62
	Width	mm	780	842	990	990	990	940
	Height	mm	547	695	862	966	966	1,245
Uncrated / Crated	Depth	mm	250	324	313	354	354	360
	Weight	kg	32 / 34	45.5 / 50	62 / 64	85 / 90	85 / 90	77 / 87
Refrigerant Pipe Size	Suction	inch	1 / 2	1 / 2	3 / 4	3 / 4	3 / 4	3 / 4
	Liquid	inch	1 / 4	1 / 4	3 / 8	1 / 2	1 / 2	1 / 2
Refrigerant / Charge	g	R22 / 950	R22 / 1,150	R22 / 1,650	R22 / 1,300	R22 / 1,400	R22 / 1,700	R22 / 4,400

(1) Sound data @ distance of 1 Meter from source.

Specifications: R410a - 50Hz Cooling & Heat Pump

Unit Model	Indoor Model		Power Supply (V / Ph / Hz)	MWX512SB04RA TWK512SRB04XA	MWX518SB04RA TWK518SRB04XA	MWX524SB04RA TWK524SRB04XA	MWX530SB04RA TWK530SSB04XA	MWX530SB04RA TWK530SSC04XB	MWX536SB04RA TWK536SSB04XA	MWX536SB04RB TWK536SSC04XB	MWX548SB04RB TWK548SSC04XB	MWX060SB04RB TWK060SSC04XB
	Outdoor Model	Power Input										
Electrical Data	Power Supply	220 - 240V - 1Ph 50Hz	18,000	12,000	18,000	24,000	30,000	30,000	36,000	36,000	48,000	60,000
	Nominal Capacity	Btu / h	1,995	1,221	1,995	2,497	3,486	3,393	4,029	3,796	4,914	6,187
	System Current	A	8.5	6	8.5	12	16.3	6.3	16.3	6.6	8.2	9.8
Cooling Mode	Nominal Capacity	Btu / h	18,000	12,000	18,000	24,000	30,000	30,000	36,000	36,000	48,000	60,000
	Power Input	W	1,905	1,179	1,905	2,596	3,996	3,971	3,874	3,883	4,641	6,404
	System Current	A	8	5	8	12.5	15.2	5.2	15.2	6.5	8.6	9.8
Indoor Units												
Power Input (Fan Motor)	W	33.4 / 31.1 / 29.5	125 / 105 / 85	125 / 105 / 85	125 / 105 / 85	143 / 122 / 110	143 / 122 / 110	143 / 122 / 110	143 / 122 / 110	143 / 122 / 110	179 / 163 / 155	179 / 163 / 155
Air Flow (H / M / L)	Cfm	350 / 280 / 235	470 / 350 / 295	470 / 350 / 295	705 / 530 / 410	820 / 705 / 590	820 / 705 / 590	820 / 705 / 590	820 / 705 / 590	820 / 705 / 590	1,175 / 1,060 / 940	1,175 / 1,060 / 940
Sound Data (H / M / L)	dBA	43 / 41 / 38	43 / 41 / 38	43 / 41 / 38	45 / 43 / 40	45 / 43 / 40	45 / 43 / 40	45 / 43 / 40	45 / 43 / 40	45 / 43 / 40	47 / 46 / 44	47 / 46 / 44
	mm	990	990	990	990	1,280	1,280	1,280	1,280	1,280	1,670	1,670
Dimensions	Height	mm	660	660	660	660	660	660	660	660	680	680
	Depth	mm	206	206	206	206	206	206	206	206	240	240
Uncrated / Crated	Weight	kg	27 / 33	27 / 33	27 / 33	27 / 33	35 / 40	35 / 40	35 / 40	35 / 40	52 / 59	52 / 59
Outdoor Units												
Rated Power Input (Compressor / Fan Motor)	W	1,150 / 58	1,855 / 130	1,855 / 130	2,430 / 155	3,650 / 304	3,650 / 304	3,650 / 304	3,650 / 304	3,650 / 304	4,750 / 296	4,750 / 296
Rated Current (Compressor)	A	5.3	8.7	8.7	11.4	17.65	17.65	17.65	17.65	17.65	8.22	9.77
Expansion Device	Type	Capillary	Capillary	Capillary	Capillary	Capillary	Capillary	Capillary	Capillary	Capillary	Capillary	Capillary
Compressor	Type	ROTARY	ROTARY	ROTARY	ROTARY	SCROLL	SCROLL	SCROLL	SCROLL	SCROLL	SCROLL	SCROLL
Fan Motor	Speed	RPM	800	750	805	740	740	740	740	740	800	800
Fan	Type - Number		Axial - 1	Axial - 1	Axial - 1	Axial - 1	Axial - 1	Axial - 1	Axial - 1	Axial - 1	Axial - 1	Axial - 1
Sound Data	dBA	43	48	48	54	60	60	60	60	60	63	63
Dimensions	Width	mm	780	842	895	990	990	990	990	990	940	940
	Height	mm	547	695	695	862	966	966	966	966	1,245	1,245
	Depth	mm	250	324	324	313	354	354	354	354	360	360
Uncrated / Crated	Weight	kg	37 / 39	52 / 56	67 / 71	99 / 104	99 / 104	99 / 104	99 / 104	99 / 104	110 / 122	110 / 122
	Suction	inch	1 / 2	1 / 2	5 / 8	3 / 4	3 / 4	3 / 4	3 / 4	3 / 4	3 / 4	3 / 4
Refrigerant Pipe Size	Liquid	inch	1 / 4	1 / 4	3 / 8	1 / 2	1 / 2	1 / 2	1 / 2	1 / 2	1 / 2	1 / 2
Refrigerant / Charge	g	R410a / 1,120	R410a / 2,050	R410a / 2,050	R410a / 2,600	R410a / 3,100	R410a / 3,100	R410a / 3,450	R410a / 3,450	R410a / 3,100	R410a / 4,000	R410a / 4,200

(1) Sound data @ distance of 1 Meter from source