



Tracer™ SC Building Automation System

An intuitive and mobile solution for managing your facility



High performing. Easy to use. Web-enabled.



A truly powerful building automation system does more than deliver performance and efficiency. It consistently delivers those benefits in an intuitive, easy-to-use platform — one that supports today’s users with the latest mobile-access technology ... and tomorrow’s users with future-forward flexibility.

The Trane® Tracer™ SC building automation system is a complete building control solution that delivers these capabilities, along with the reliability you expect from Trane. Tracer SC coordinates the equipment from your building’s HVAC, lighting and other systems, and offers control with a simplified, Web-enabled user interface — so you get easy and convenient access to your system from virtually anywhere.

Factory-programmed and tested applications are designed to work together with factory-mounted unit controllers to ensure consistent high performance of the system from day one. That also makes Tracer SC easy and cost-effective to install, for on-time, on-budget project completion.

Because Tracer SC is built on a platform based on open standards, it provides the latest technology while integrating your new and existing equipment and controls seamlessly — both Trane and non-Trane.

Efficiently manage your building from nearly anywhere and get high performance and consistent comfort, with the easy-to-use, reliable Tracer SC.

Pre-engineered applications ensure high performance

Not all standard applications are created equal. Many controls companies deliver an application that is pulled from a library of previous work. With Tracer SC, you receive pre-engineered applications and user interfaces that have been developed by industry-leading HVAC experts and tested in thousands of facilities.

Factory-programmed and tested applications are designed to remove the variables typically found in a construction cycle and technicians' experience levels to ensure consistent high performance from day one — and throughout the life of the system.

Standard applications that are pre-engineered make the system faster and easier to install, reducing the risk to you by ensuring a higher level of reliability and system performance. Additionally, well-documented, standard applications and interfaces simplify system operation and troubleshooting of the facility after installation.

The built-in functions and applications of Tracer SC include:

- Scheduling that can be configured to your building's needs and operation.
- Scheduling that includes optimal start and stop features for a balance of occupant comfort and energy utilization.
- Area control that allows you to group your building the way you use it and program multiple rooms or areas on the same schedule and update together as needed, from one interface.
- Chiller plant control that optimizes control of the most common plant layouts.
- Variable air systems that standardize the control of rooftop/variable-air-volume systems, including fan static pressure optimization and outside air intake.
- Overrides, reporting, data logging and alarm and event logs.



Easily manage your building, to drive efficiency and maximize performance.

The Tracer™ SC building automation system provides an intuitive user experience, so you get sophisticated and advanced building control without complexity. State-of-the-art graphics and dashboards make it easier to monitor and manage equipment and systems, so you can quickly determine how your building is operating and why, and take appropriate action.

The simplified user interface works across different types of browsers and devices — to help you achieve greater energy savings and improved operational efficiencies through easier, more effective system management.

Navigate your facility with ease

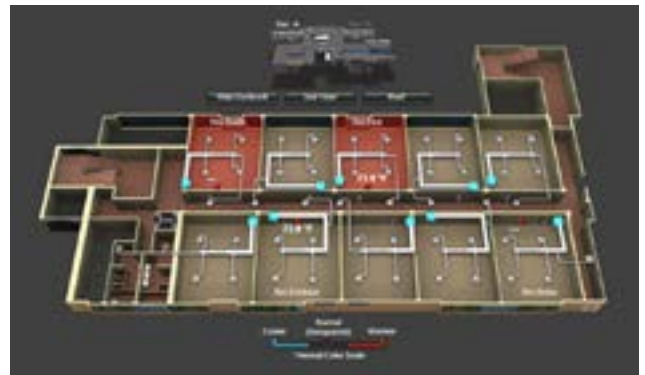
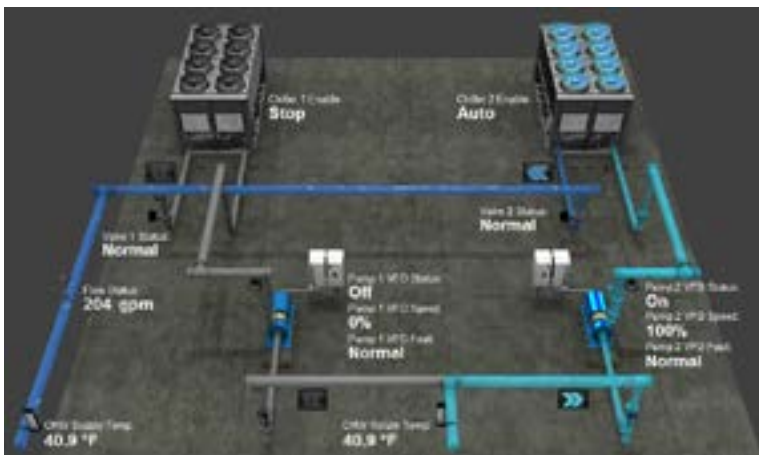
Standard and custom views allow you to quickly navigate to and interact with the information you need to manage your facility. Industry-leading 3-D graphics can show you equipment, systems and floorplans of your facility. Along with consolidated status and control pages, you'll find navigation of your facility easier than ever.

Respond quickly to trouble calls

Thousands of hours of customer research have resulted in an intuitive, task-based interface that allows for faster response to system issues than ever. Get key status information at a glance, with historical data and alarm functions all in one place. Historical data collection on key unit and system parameters is automatic, to ensure the data you need is available.

Keep your automated system automated

System overrides are a primary way to lose efficiency in a building. Tracer SC helps you keep your automated system performing as it was designed, with temporary overrides, a clear indication of who's in control, simple graphical scheduling and online help throughout the system.



Open and flexible — to unlock your choices

Tracer SC is built on a platform based on open standards, for integration flexibility. You can integrate with your new or existing HVAC equipment — whether or not it's from Trane. This gives you the ability to optimize existing systems in your building with Tracer SC — regardless of manufacturer.

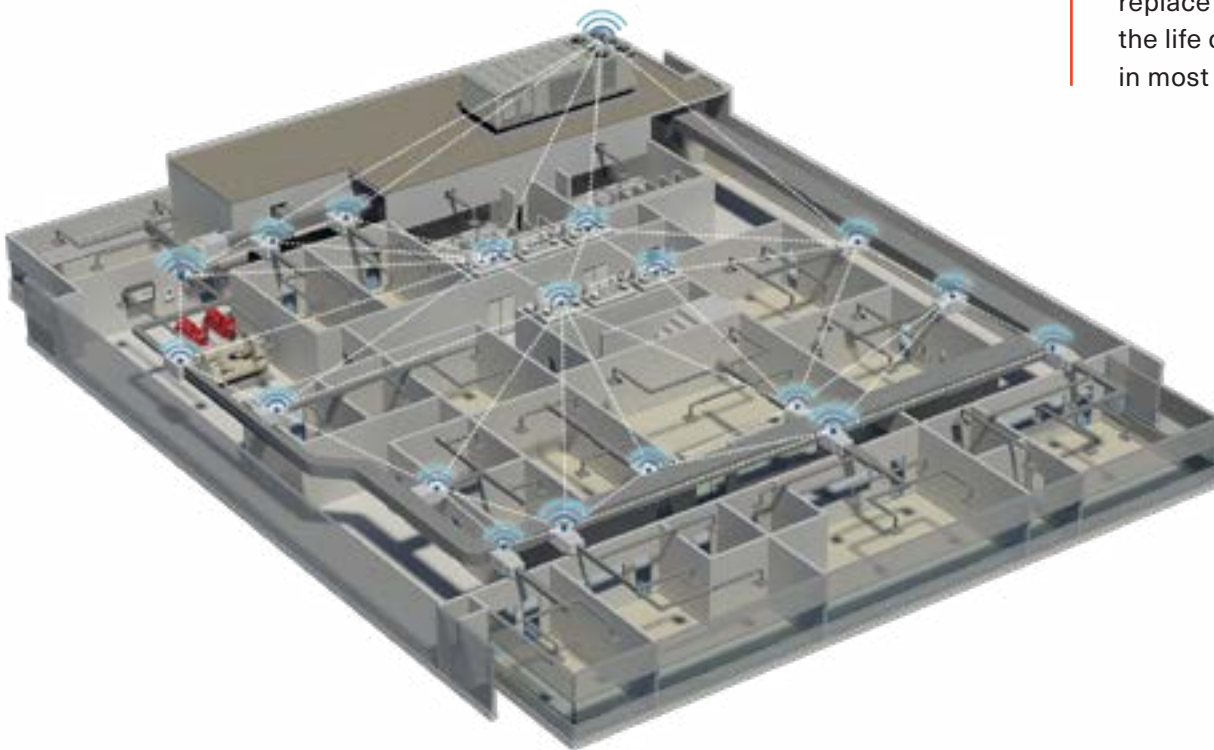
Since the systems and components are designed to work together, it's easy to install and set up, saving time and money. And you can quickly and easily bring new equipment online.

Because the system uses Trane® Air-Fi™ wireless technology, you can easily move or replace devices or reconfigure your space in the future as your building needs change.

Trane Air-Fi uses redundant, self-repairing mesh technology and has twice the signal range compared to other wireless systems. The result is a system with excellent long-term reliability, as well as reduced maintenance and troubleshooting for ongoing savings after installation.



Each Trane Air-Fi wireless sensor comes with a lifetime battery,* so you won't have to replace batteries for the life of the system in most installations.



*Based on typical indoor operating conditions.

Mobility lets you manage on the go.



The Web-based interface of the Tracer™ SC building automation system gives you the freedom to monitor and manage your building from virtually anywhere, from most Web-connected devices, including tablets and smartphones. A mobile app also provides remote access, so you're no longer tied to a specific workstation to access your building system. You can use Tracer SC with the technology you already have, to take your building control to the next level.

- **Quickly and easily manage any issues.** Receive alarms via email, customized by severity and day. You can also use the mobile interface to set schedules, control overrides and deal with issues of occupant comfort.
- **View the status of your building and take action.** Dashboards and customizable interfaces give you access to your system 24/7, no matter where you are. See crucial data in your spaces, with mobile graphics that show status at a glance.
- **The power of Tracer in the palm of your hand.** The Tracer BAS Operator Suite allows you to operate building systems whether you're down the hall, across campus or at home. The app works with Android™ devices and iPhone®, iPod touch® and iPad® devices.



A system that meets your needs—today and tomorrow

With Tracer SC, you get a solution that provides consistent high performance; Web-based, mobility that's easy to understand and use for building management on the go; and an open, flexible system that's prepared for whatever tomorrow brings.

Efficiently manage your building with an intuitive user interface that puts all your critical building information at your fingertips. In addition to the advanced capabilities of the system, your connection with Tracer SC provides the ability to capture and measure energy data, giving you additional insights into building performance and usage that can drive improvement. With Tracer SC, your building is enabled to utilize Trane® Intelligent Services, from which experts can analyze system performance information to help you increase energy efficiency, operating income and sustainability.

With a direct link to Trane using Active Monitoring, you get help when you need it—including immediate notification, diagnostics and dispatch of service personnel to evaluate and repair system faults—so it's easier for you to keep your building performing as expected, for the life of the system.

Tracer SC is a simple, reliable, Web-enabled solution that can result in energy savings, easier management and worry-free operation for you.

Visit Trane.com/TracerSC or contact your local Trane account manager to learn more.



Trane – by Trane Technologies (NYSE: TT), a global climate innovator – creates comfortable, energy efficient indoor environments through a broad portfolio of heating, ventilating and air conditioning systems and controls, services, parts and supply. For more information, please visit trane.com or tranetechnologies.com.

All trademarks referenced in this document are the trademarks of their respective owners.

© 2020 Trane. All Rights Reserved.

BAS-SLB065-EN
06/16/2020