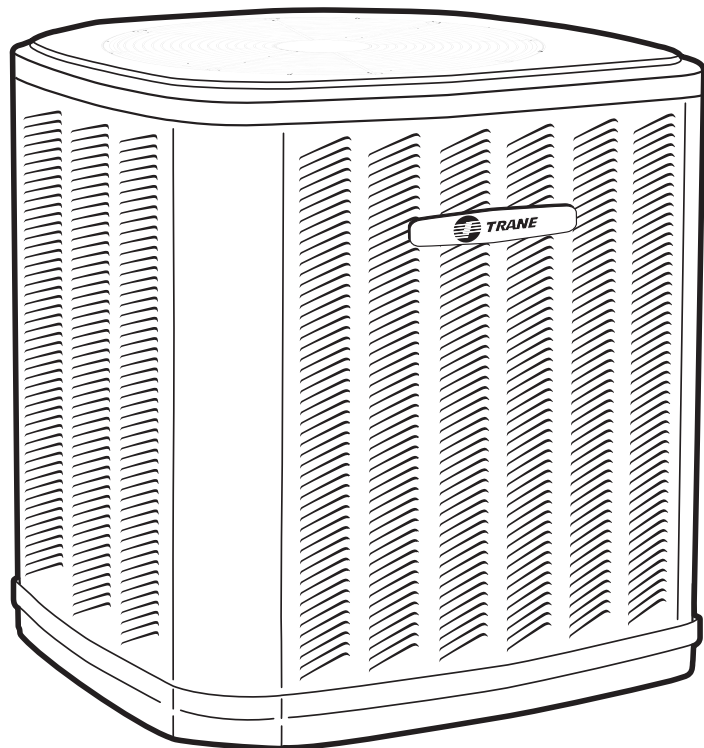




Split System Cooling Product Data

2TTA0030-072A

2½ – 6 Tons



PUB. NO. 22-1740-05



General Features

Split System Cooling Units . . . The Evolution Continues

2TTA0 split systems represent a product that is not only an engineer's dream, it's also a customer's dream. The design team's mission and accomplishment is enhanced performance and efficiency, improved reliability and durability, and improved installability and serviceability.

Trane's experienced design team applied "six sigma principles", the latest computer

technology and customer research to develop the next generation of leadership products.

Couple the Trane reputation for reliability and durability with the above mentioned mission and accomplishments and you continue to have systems that prove "It's Hard to Stop a Trane®."



Contents

General Features	2
Features and Benefits	4
Optional Equipment	5
Low Outdoor Ambient Cooling	5
A.R.I. Standard Capacity Rating Conditions	5
Selection Procedure	6
Model Number Nomenclature	6
General Data	7
2TTA0030A3/4000C	7
2TTA0036A3/4000C	8
2TTA0042A3/4000C	9
2TTA0048A3/4000C	10
2TTA0060A3/4000C	11
2TTA0072A3/4000C	12
Electrical Data	13
Dimensions	16
Mechanical Specification Options	17



Features and Benefits

- **Climatuff**[®] compressor
- All aluminum **Spine Fin**[™] coil
- **DuraTuff**[™] base, fast complete drain, weather proof
- **WeatherGuard**[™] fasteners
- New appearance, polystate gray color
- **Quick-Sess**[™] cabinet, service access and refrigerant connections with full coil protection
- Corrosion resistant finish
- High/low pressure & temperature protection internal to compressor
- Low pressure switch
- Liquid line filter-drier
- **Comfort "R"**[™] mode approved
- Easy single side service
- Multi-use liquid and suction line service valves
- Compressor sump heat
- Easy top & fan removal
- HCFC-22 refrigerant field supplied
- **Extended warranties available**
- S.E.E.T. design testing
- 100% line run test
- Low ambient to 55°F as shipped
- Low ambient to 40°F with EDC accessory AY28X079
- Low ambient to 30°F with EDC accessory AY28X079 and TXV
- Low ambient cooling to 0°F with TXV and BAYLOAM103



Features and Benefits

Optional Equipment

OPTIONAL EQUIPMENT FOR CONDENSING UNITS (Check mark [✓] indicates accessories included).

Indoor Thermostats — Htg./Clg. Programmable Thermostat	TAYSTAT300C []
Electronic, 2-Stg. Htg./1 Clg.	TAYSTAT302C []
Prog., 5/2 Day, Manual, 1 Htg./1 Clg.	TAYSTAT340 []
Prog., 5/2 Day, Manual, 2 (Gas) 1 Htg./1 Clg.	TAYSTAT350 []
Electronic, 1 Htg. (Gas)/1 Clg. (Non Prog.)	TAYSTAT370 []
Electronic, 1 Htg. (Elec.)/1 Clg. (Non Prog.) ^②	TAYSTAT371 []
Electronic, 2 Htg. (Gas)/1 Clg. (Non Prog.)	TAYSTAT380 []
Manual, 2-Stg. Htg./1 Clg.	TAYSTAT241 []
Heating/Cooling — Horizontal	AY28X092 []
Cooling Only with Fan Switch	BAYSTAT304 []
Heating/Cooling — Vertical	BAYSTAT305 []
Two-Stage Heating/Cooling — Horizontal ^①	BAY28X183 []
One-Stage Heating/Cooling — Horizontal ^①	BAY28X182 []
Thermostat Locking Cover ^③	BAY28X190 []
Outdoor Thermostat	TAYSTAT250B []
Sub-base BAY28X182, 183 (Manual changeover) ^②	BAY28X185 []
Evaporator Defrost Control	AY28X079 []
Fan Delay Relay Kit	BAY24X045 []
5 Minute Delay Relay	TAYASCT501A []
Outdoor Temperature Sensor (used with TAYSTAT300C,302C)	TAYSENS100A []
Extreme Conditions Mounting Kit	BAYECMT001 []
Seacoast Kit	BAYSEAC001 []
Electronic Head Pressure Control	BAYLOAM103 []

① Requires sub-base
 ② Specifically designed for electric heat applications (instant on fan)
 ③ Not for use with programmable thermostats

BRAZED TUBING REFRIGERANT LINE SETS (All Suction Lines are Insulated.)

3/4" ODM (90° bend, one end), 3/4" and 5/16" tubing	TAYREFLN2_* []
7/8" ODM (90° bend, one end), 7/8" and 3/8" tubing	TAYREFLN3_* []
1-1/8" ODM (90° bend, one end), 1-1/8" and 3/8" tubing	TAYREFLN4_* []

* Line lengths: 15, 20, 25, 30, 40 & 50 ft. Insert desired line length in catalog number at right for the complete number.
 Example: TAYREFLN220

Low Outdoor Ambient Cooling

Low Ambient Cooling	As Manufactured	Evaporator Defrost Control
FCCV Accutron™	55°F	40°F
Thermal Expansion Valve (TXV)	55°F	30°F

A.R.I. Standard Capacity Rating Conditions

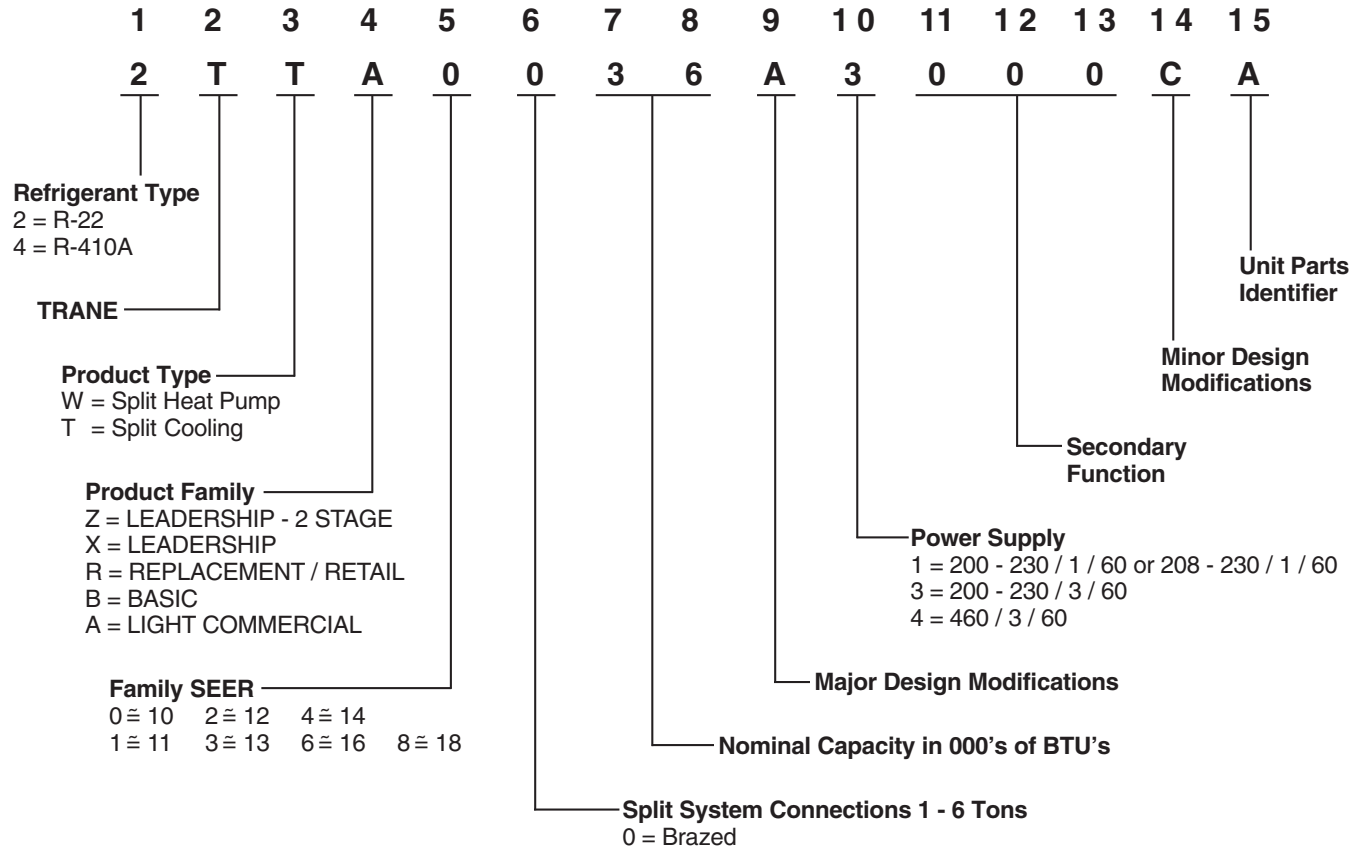
A.R.I. STANDARD 210/240 RATING CONDITIONS — (A) Cooling 80°F. D.B., 67°F. W.B. air entering indoor coil, 95°F. D.B. air entering outdoor coil. (B) High Temperature Heating 47°F. D.B., 43°F. W.B. air entering outdoor coil, 70°F. D.B. air entering indoor coil. (C) Low Temperature Heating 17°F. D.B., 15°F. W.B. air entering outdoor coil, 70°F. D.B. air entering indoor coil. (D) Rated indoor airflow for heating is the same as for cooling.

A.R.I. STANDARD 270 RATING CONDITIONS — (Noise rating numbers are determined with the unit in cooling operation.) Standard Noise Rating number is at 95°F. outdoor air.



Selection Procedure

Model Number Nomenclature





General Data

2TTA0030A3/4000C

OUTDOOR UNIT	2TTA0030A3000C	2TTA0030A4000C
SOUND RATING (DECIBELS)	80	80
POWER CONNS. — V/PH/Hz ①	200/230/3/60	460/3/60
MIN. BRCH. CIR. AMPACITY	13	7
BR. CIR. PROT. RTG. - MAX. (AMPS)	20	15
COMPRESSOR	CLIMATUFF®	CLIMATUFF®
NO. USED - NO. SPEEDS	1 - 1	1 - 1
VOLTS/PH/Hz	200/230/3/60	460/3/60
R.L. AMPS ⑤ - L.R. AMPS	9.8 - 74	5.2 - 38
FACTORY INSTALLED		
START COMPONENTS ⑥	NO	NO
INSULATION/SOUND BLANKET	NO	NO
COMPRESSOR HEAT	YES	YES
OUTDOOR FAN — TYPE	PROPELLER	PROPELLER
DIA. (IN.) - NO. USED	19 - 1	19 - 1
TYPE DRIVE - NO. SPEEDS	DIRECT - 1	DIRECT - 1
CFM @ 0.0 IN. W.G. ②	2550	2550
NO. MOTORS - HP.	1 - 1/8	1 - 1/8
MOTOR SPEED R.P.M.	1075	1075
VOLTS/PH/Hz	200/230/3/60	460/3/60
F.L. AMPS	0.95	0.5
OUTDOOR COIL — TYPE	SPINE FIN™	SPINE FIN™
ROWS - FP.I.	1 - 24	1 - 24
FACE AREA (SQ. FT.)	9.72	9.72
TUBE SIZE (IN.)	3/8	3/8
REFRIGERANT	R-22	R-22
(O.D. UNIT) NP CHR.G. ③	4/03-LB/OZ	4/03-LB/OZ
FIELD SUPPLIED	YES	YES
LINE SIZE - IN. O.D. GAS ④	3/4	3/4
LINE SIZE - IN. O.D. LIQ. ④	5/16	5/16
FCCV		
RESTRICTOR ORIFICE SIZE	0.065	0.065
DIMENSIONS	H X W X D	H X W X D
OUTDOOR UNIT CRATED (IN.)	30.1 X 26.7 X 30.2	30.1 X 26.7 X 30.2
UNCRATED	SEE OUTLINE DWG.	SEE OUTLINE DWG.
WEIGHT		
SHIPPING (LBS.)	175	175
NET (LBS.)	156	156

- ① CALCULATED IN ACCORDANCE WITH NATIONAL ELECTRIC CODE. ONLY USE HACR CIRCUIT BREAKERS OR FUSES.
- ② STANDARD AIR - DRY COIL - OUTDOOR
- ③ THIS VALUE APPROXIMATE. FOR MORE PRECISE VALUE SEE UNIT NAMEPLATE AND SERVICE INSTRUCTION.
- ④ MAX. LINEAR LENGTH: 80 FT WITH RECIPROCATING COMPRESSOR - 60 FT WITH SCROLL. MAX. LIFT - SUCTION 60 FT; MAX LIFT - LIQUID 60 FT. FOR GREATER LENGTH REFER TO REFRIGERANT PIPING SOFTWARE PUB. NO. 32-3312-01.
- ⑤ THE VALUE SHOWN FOR COMPRESSOR RLA ON THE UNIT NAMEPLATE AND ON THIS SPECIFICATION SHEET IS USED TO COMPUTE MINIMUM BRANCH CIRCUIT AMPACITY AND MAXIMUM FUSE SIZE. THE VALUE SHOWN IS THE BRANCH CIRCUIT SELECTION CURRENT.
- ⑥ NO MEANS NO START COMPONENTS. YES MEANS QUICK START KIT COMPONENTS.
PTC MEANS POSITIVE TEMPERATURE COEFFICIENT STARTER.





General Data

2TTA0036A3/4000C

OUTDOOR UNIT	2TTA0036A3000C	2TTA0036A4000C
SOUND RATING (DECIBELS)	79	79
POWER CONNS. — V/PH/Hz ①	200/230/3/60	460/3/60
MIN. BRCH. CIR. AMPACITY	15	8
BR. CIR. PROT. RTG. - MAX. (AMPS)	25	15
COMPRESSOR	CLIMATUFF®	CLIMATUFF®
NO. USED - NO. SPEEDS	1 - 1	1 - 1
VOLTS/PH/Hz	200/230/3/60	460/3/60
R.L. AMPS ⑤ - L.R. AMPS	11.3 - 74	5.7 - 38
FACTORY INSTALLED		
START COMPONENTS ⑥	NO	NO
INSULATION/SOUND BLANKET	NO	NO
COMPRESSOR HEAT	YES	YES
OUTDOOR FAN — TYPE	PROPELLER	PROPELLER
DIA. (IN.) - NO. USED	19 - 1	19 - 1
TYPE DRIVE - NO. SPEEDS	DIRECT - 1	DIRECT - 1
CFM @ 0.0 IN. W.G. ②	2500	2500
NO. MOTORS - HP.	1 - 1/4	1 - 1/4
MOTOR SPEED R.P.M.	1075	1075
VOLTS/PH/Hz	200/230/3/60	460/3/60
F.L. AMPS	1.3	0.6
OUTDOOR COIL — TYPE	SPINE FIN™	SPINE FIN™
ROWS - FP.I.	1 - 24	1 - 24
FACE AREA (SQ. FT.)	9.72	9.72
TUBE SIZE (IN.)	3/8	3/8
REFRIGERANT	R-22	R-22
(O.D. UNIT) NP CHR.G. ③	4/09-LB/OZ	4/09-LB/OZ
FIELD SUPPLIED	YES	YES
LINE SIZE - IN. O.D. GAS ④	7/8	7/8
LINE SIZE - IN. O.D. LIQ. ④	3/8	3/8
FCCV		
RESTRICTOR ORIFICE SIZE	0.073	0.073
DIMENSIONS	H X W X D	H X W X D
OUTDOOR UNIT CRATED (IN.)	30.1 X 26.7 X 30.2	30.1 X 26.7 X 30.2
UNCRATED	SEE OUTLINE DWG.	SEE OUTLINE DWG.
WEIGHT		
SHIPPING (LBS.)	179	179
NET (LBS.)	160	160

- ① CALCULATED IN ACCORDANCE WITH NATIONAL ELECTRIC CODE. ONLY USE HACR CIRCUIT BREAKERS OR FUSES.
- ② STANDARD AIR - DRY COIL - OUTDOOR
- ③ THIS VALUE APPROXIMATE. FOR MORE PRECISE VALUE SEE UNIT NAMEPLATE AND SERVICE INSTRUCTION.
- ④ MAX. LINEAR LENGTH: 80 FT WITH RECIPROCATING COMPRESSOR - 60 FT WITH SCROLL. MAX. LIFT - SUCTION 60 FT; MAX LIFT - LIQUID 60 FT. FOR GREATER LENGTH REFER TO REFRIGERANT PIPING SOFTWARE PUB. NO. 32-3312-01.
- ⑤ THE VALUE SHOWN FOR COMPRESSOR RLA ON THE UNIT NAMEPLATE AND ON THIS SPECIFICATION SHEET IS USED TO COMPUTE MINIMUM BRANCH CIRCUIT AMPACITY AND MAXIMUM FUSE SIZE. THE VALUE SHOWN IS THE BRANCH CIRCUIT SELECTION CURRENT.
- ⑥ NO MEANS NO START COMPONENTS. YES MEANS QUICK START KIT COMPONENTS. PTC MEANS POSITIVE TEMPERATURE COEFFICIENT STARTER.





General Data

2TTA0042A3/4000C

OUTDOOR UNIT	2TTA0042A3000C	2TTA0042A4000C
SOUND RATING (DECIBELS)	83	83
POWER CONNS. — V/PH/Hz ①	200/230/3/60	460/3/60
MIN. BRCH. CIR. AMPACITY	18	9
BR. CIR. PROT. RTG. - MAX. (AMPS)	30	15
COMPRESSOR	CLIMATUFF®	CLIMATUFF®
NO. USED - NO. SPEEDS	1 - 1	1 - 1
VOLTS/PH/Hz	200/230/3/60	460/3/60
R.L. AMPS ⑤ - L.R. AMPS	13.2 - 101	6.5 - 51
FACTORY INSTALLED		
START COMPONENTS ⑥	NO	NO
INSULATION/SOUND BLANKET	NO	NO
COMPRESSOR HEAT	YES	YES
OUTDOOR FAN — TYPE	PROPELLER	PROPELLER
DIA. (IN.) - NO. USED	19 - 1	19 - 1
TYPE DRIVE - NO. SPEEDS	DIRECT - 1	DIRECT - 1
CFM @ 0.0 IN. W.G. ②	2475	2475
NO. MOTORS - HP.	1 - 1/4	1 - 1/4
MOTOR SPEED R.P.M.	1075	1075
VOLTS/PH/Hz	200/230/3/60	460/3/60
F.L. AMPS	1.3	0.6
OUTDOOR COIL — TYPE	SPINE FIN™	SPINE FIN™
ROWS - FP.I.	1 - 24	1 - 24
FACE AREA (SQ. FT.)	11.32	11.32
TUBE SIZE (IN.)	3/8	3/8
REFRIGERANT	R-22	R-22
(O.D. UNIT) NP CHR.G. ③	5/15-LB/OZ	5/15-LB/OZ
FIELD SUPPLIED	YES	YES
LINE SIZE - IN. O.D. GAS ④	7/8	7/8
LINE SIZE - IN. O.D. LIQ. ④	3/8	3/8
FCCV		
RESTRICTOR ORIFICE SIZE	0.075	0.075
DIMENSIONS	H X W X D	H X W X D
OUTDOOR UNIT CRATED (IN.)	33.2 X 26.7 X 30.2	33.2 X 26.7 X 30.2
UNCRATED	SEE OUTLINE DWG.	SEE OUTLINE DWG.
WEIGHT		
SHIPPING (LBS.)	211	211
NET (LBS.)	191	191

- ① CALCULATED IN ACCORDANCE WITH NATIONAL ELECTRIC CODE. ONLY USE HACR CIRCUIT BREAKERS OR FUSES.
- ② STANDARD AIR - DRY COIL - OUTDOOR
- ③ THIS VALUE APPROXIMATE. FOR MORE PRECISE VALUE SEE UNIT NAMEPLATE AND SERVICE INSTRUCTION.
- ④ MAX. LINEAR LENGTH: 80 FT WITH RECIPROCATING COMPRESSOR - 60 FT WITH SCROLL. MAX. LIFT - SUCTION 60 FT; MAX LIFT - LIQUID 60 FT. FOR GREATER LENGTH REFER TO REFRIGERANT PIPING SOFTWARE PUB. NO. 32-3312-01.
- ⑤ THE VALUE SHOWN FOR COMPRESSOR RLA ON THE UNIT NAMEPLATE AND ON THIS SPECIFICATION SHEET IS USED TO COMPUTE MINIMUM BRANCH CIRCUIT AMPACITY AND MAXIMUM FUSE SIZE. THE VALUE SHOWN IS THE BRANCH CIRCUIT SELECTION CURRENT.
- ⑥ NO MEANS NO START COMPONENTS. YES MEANS QUICK START KIT COMPONENTS. PTC MEANS POSITIVE TEMPERATURE COEFFICIENT STARTER.





General Data

2TTA0048A3/4000C

OUTDOOR UNIT	2TTA0048A3000C	2TTA0048A4000C
SOUND RATING (DECIBELS)	82	82
POWER CONNS. — V/PH/Hz ①	200/230/3/60	460/3/60
MIN. BRCH. CIR. AMPACITY	20	10
BR. CIR. PROT. RTG. - MAX. (AMPS)	30	15
COMPRESSOR	CLIMATUFF®	CLIMATUFF®
NO. USED - NO. SPEEDS	1 - 1	1 - 1
VOLTS/PH/Hz	200/230/3/60	460/3/60
R.L. AMPS ⑤ - L.R. AMPS	14.7 - 101	7.2 - 51
FACTORY INSTALLED		
START COMPONENTS ⑥	NO	NO
INSULATION/SOUND BLANKET	NO	NO
COMPRESSOR HEAT	YES	YES
OUTDOOR FAN — TYPE	PROPELLER	PROPELLER
DIA. (IN.) - NO. USED	19 - 1	19 - 1
TYPE DRIVE - NO. SPEEDS	DIRECT - 1	DIRECT - 1
CFM @ 0.0 IN. W.G. ②	2475	2475
NO. MOTORS - HP.	1 - 1/4	1 - 1/4
MOTOR SPEED R.P.M.	1075	1075
VOLTS/PH/Hz	200/230/3/60	460/3/60
F.L. AMPS	1.3	0.6
OUTDOOR COIL — TYPE	SPINE FIN™	SPINE FIN™
ROWS - FP.I.	1 - 24	1 - 24
FACE AREA (SQ. FT.)	13.75	13.75
TUBE SIZE (IN.)	3/8	3/8
REFRIGERANT	R-22	R-22
(O.D. UNIT) NP CHR.G. ③	6/13-LB/OZ	6/13-LB/OZ
FIELD SUPPLIED	YES	YES
LINE SIZE - IN. O.D. GAS ④	1-1/8	1-1/8
LINE SIZE - IN. O.D. LIQ. ④	3/8	3/8
FCCV		
RESTRICTOR ORIFICE SIZE	0.083	0.083
DIMENSIONS	H X W X D	H X W X D
OUTDOOR UNIT CRATED (IN.)	33.2 X 26.7 X 30.2	33.2 X 26.7 X 30.2
UNCRATED	SEE OUTLINE DWG.	SEE OUTLINE DWG.
WEIGHT		
SHIPPING (LBS.)	216	216
NET (LBS.)	196	196

- ① CALCULATED IN ACCORDANCE WITH NATIONAL ELECTRIC CODE. ONLY USE HACR CIRCUIT BREAKERS OR FUSES.
- ② STANDARD AIR - DRY COIL - OUTDOOR
- ③ THIS VALUE APPROXIMATE. FOR MORE PRECISE VALUE SEE UNIT NAMEPLATE AND SERVICE INSTRUCTION.
- ④ MAX. LINEAR LENGTH: 80 FT WITH RECIPROCATING COMPRESSOR - 60 FT WITH SCROLL. MAX. LIFT - SUCTION 60 FT; MAX LIFT - LIQUID 60 FT. FOR GREATER LENGTH REFER TO REFRIGERANT PIPING SOFTWARE PUB. NO. 32-3312-01.
- ⑤ THE VALUE SHOWN FOR COMPRESSOR RLA ON THE UNIT NAMEPLATE AND ON THIS SPECIFICATION SHEET IS USED TO COMPUTE MINIMUM BRANCH CIRCUIT AMPACITY AND MAXIMUM FUSE SIZE. THE VALUE SHOWN IS THE BRANCH CIRCUIT SELECTION CURRENT.
- ⑥ NO MEANS NO START COMPONENTS. YES MEANS QUICK START KIT COMPONENTS. PTC MEANS POSITIVE TEMPERATURE COEFFICIENT STARTER.





General Data

2TTA0060A3/4000C

OUTDOOR UNIT	2TTA0060A3000C	2TTA0060A4000C
SOUND RATING (DECIBELS)	82	82
POWER CONNS. — V/PH/Hz ①	200/230/3/60	460/3/60
MIN. BRCH. CIR. AMPACITY	27	13
BR. CIR. PROT. RTG. - MAX. (AMPS)	45	20
COMPRESSOR	CLIMATUFF®	CLIMATUFF®
NO. USED - NO. SPEEDS	1 - 1	1 - 1
VOLTS/PH/Hz	200/230/3/60	460/3/60
R.L. AMPS ⑤ - L.R. AMPS	19.7 - 139	9.6 - 71
FACTORY INSTALLED		
START COMPONENTS ⑥	NO	NO
INSULATION/SOUND BLANKET	NO	NO
COMPRESSOR HEAT	YES	YES
OUTDOOR FAN — TYPE	PROPELLER	PROPELLER
DIA. (IN.) - NO. USED	23 - 1	23 - 1
TYPE DRIVE - NO. SPEEDS	DIRECT - 1	DIRECT - 1
CFM @ 0.0 IN. W.G. ②	3700	3700
NO. MOTORS - HP.	1 - 1/4	1 - 1/4
MOTOR SPEED R.P.M.	825	825
VOLTS/PH/Hz	200/230/3/60	460/3/60
F.L. AMPS	1.9	1.0
OUTDOOR COIL — TYPE	SPINE FIN™	SPINE FIN™
ROWS - FP.I.	1 - 24	1 - 24
FACE AREA (SQ. FT.)	18.75	18.75
TUBE SIZE (IN.)	3/8	3/8
REFRIGERANT	R-22	R-22
(O.D. UNIT) NP CHR.G. ③	7/07-LB/OZ	7/07-LB/OZ
FIELD SUPPLIED	YES	YES
LINE SIZE - IN. O.D. GAS ④	1-1/8	1-1/8
LINE SIZE - IN. O.D. LIQ. ④	3/8	3/8
FCCV		
RESTRICTOR ORIFICE SIZE	0.092	0.092
DIMENSIONS	H X W X D	H X W X D
OUTDOOR UNIT CRATED (IN.)	38 X 30.1 X 33.8	38 X 30.1 X 33.8
UNCRATED	SEE OUTLINE DWG.	SEE OUTLINE DWG.
WEIGHT		
SHIPPING (LBS.)	255	255
NET (LBS.)	227	227

- ① CALCULATED IN ACCORDANCE WITH NATIONAL ELECTRIC CODE. ONLY USE HACR CIRCUIT BREAKERS OR FUSES.
- ② STANDARD AIR - DRY COIL - OUTDOOR
- ③ THIS VALUE APPROXIMATE. FOR MORE PRECISE VALUE SEE UNIT NAMEPLATE AND SERVICE INSTRUCTION.
- ④ MAX. LINEAR LENGTH: 80 FT WITH RECIPROCATING COMPRESSOR - 60 FT WITH SCROLL. MAX. LIFT - SUCTION 60 FT; MAX LIFT - LIQUID 60 FT. FOR GREATER LENGTH REFER TO REFRIGERANT PIPING SOFTWARE PUB. NO. 32-3312-01.
- ⑤ THE VALUE SHOWN FOR COMPRESSOR RLA ON THE UNIT NAMEPLATE AND ON THIS SPECIFICATION SHEET IS USED TO COMPUTE MINIMUM BRANCH CIRCUIT AMPACITY AND MAXIMUM FUSE SIZE. THE VALUE SHOWN IS THE BRANCH CIRCUIT SELECTION CURRENT.
- ⑥ NO MEANS NO START COMPONENTS. YES MEANS QUICK START KIT COMPONENTS. PTC MEANS POSITIVE TEMPERATURE COEFFICIENT STARTER.





General Data

2TTA0072A3/4000C

OUTDOOR UNIT	2TTA0072A3000C	2TTA0072A4000C
SOUND RATING (DECIBELS) ②	81	81
POWER CONNS. — V/PH/HZ ③	200/230/3/60	460/3/60
MIN. BRCH. CIR. AMPACITY	26	14
BR. CIR. PROT. RTG. - MAX. (AMPS)	45	20
COMPRESSOR	CLIMATUFF® - SCROLL	CLIMATUFF® - SCROLL
NO. USED - NO. SPEEDS	1 - 1	1 - 1
VOLTS/PH/HZ	200/230/3/60	460/3/60
R.L. AMPS ⑤ - L.R. AMPS	19.8 - 156	10.5 - 75
FACTORY INSTALLED		
START COMPONENTS ⑥	NO	NO
INSULATION/SOUND BLANKET	NO	NO
COMPRESSOR HEAT	YES	YES
OUTDOOR FAN — TYPE	PROPELLER	PROPELLER
DIA. (IN.) - NO. USED	27.6 - 1	27.6 - 1
TYPE DRIVE - NO. SPEEDS	DIRECT - 1	DIRECT - 1
CFM @ 0.0 IN. W.G. ②	4225	4225
NO. MOTORS - HP.	1 - 1/6	1 - 1/6
MOTOR SPEED R.P.M.	825	825
VOLTS/PH/HZ	200/230/3/60	460/3/60
F.L. AMPS	1.4	0.7
OUTDOOR COIL — TYPE	SPINE FIN™	SPINE FIN™
ROWS - FP.I.	1 - 24	1 - 24
FACE AREA (SQ. FT.)	27.87	27.87
TUBE SIZE (IN.)	3/8	3/8
REFRIGERANT	R-22	R-22
(O.D. UNIT) NP CHR.G. ⑥	10/00-LB/OZ	10/00-LB/OZ
FIELD SUPPLIED	YES	YES
LINE SIZE - IN. O.D. GAS ④	1-1/8	1-1/8
LINE SIZE - IN. O.D. LIQ. ④	3/8	3/8
DIMENSIONS	H X W X D	H X W X D
OUTDOOR UNIT CRATED (IN.)	46.4 X 35.1 X 38.7	46.4 X 35.1 X 38.7
UNCRATED	SEE OUTLINE DWG.	SEE OUTLINE DWG.
WEIGHT		
SHIPPING (LBS.)	297	297
NET (LBS.)	261	261

- ① CALCULATED IN ACCORDANCE WITH NATIONAL ELECTRIC CODE. ONLY USE HACR CIRCUIT BREAKERS OR FUSES.
- ② STANDARD AIR - DRY COIL - OUTDOOR
- ③ THIS VALUE APPROXIMATE. FOR MORE PRECISE VALUE SEE UNIT NAMEPLATE AND SERVICE INSTRUCTION.
- ④ MAX. LINEAR LENGTH: 80 FT WITH RECIPROCATING COMPRESSOR - 60 FT WITH SCROLL. MAX. LIFT - SUCTION 60 FT; MAX LIFT - LIQUID 60 FT. FOR GREATER LENGTH REFER TO REFRIGERANT PIPING SOFTWARE PUB. NO. 32-3312-01.
- ⑤ THE VALUE SHOWN FOR COMPRESSOR RLA ON THE UNIT NAMEPLATE AND ON THIS SPECIFICATION SHEET IS USED TO COMPUTE MINIMUM BRANCH CIRCUIT AMPACITY AND MAXIMUM FUSE SIZE. THE VALUE SHOWN IS THE BRANCH CIRCUIT SELECTION CURRENT.
- ⑥ NO MEANS NO START COMPONENTS. YES MEANS QUICK START KIT COMPONENTS. PTC MEANS POSITIVE TEMPERATURE COEFFICIENT STARTER.



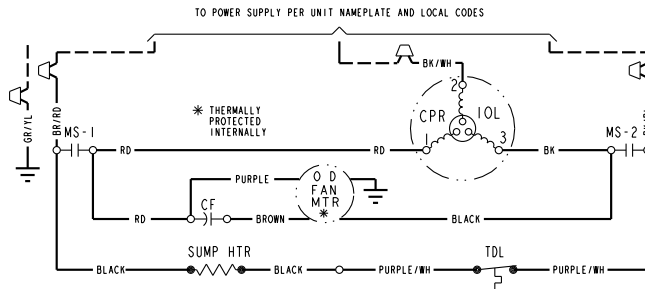


Electrical Data

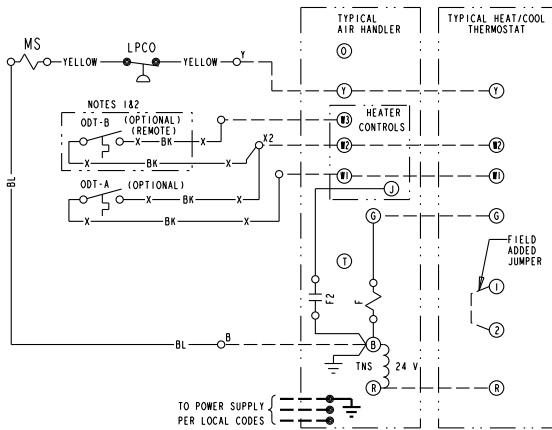
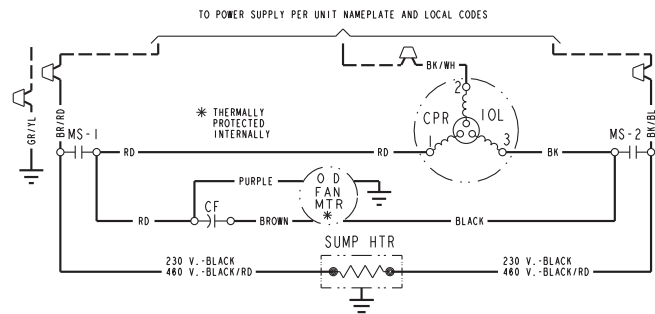
SCHEMATIC DIAGRAMS

(SEE LEGEND)

2TTA0030-060A3000C



2TTA0072A3000C

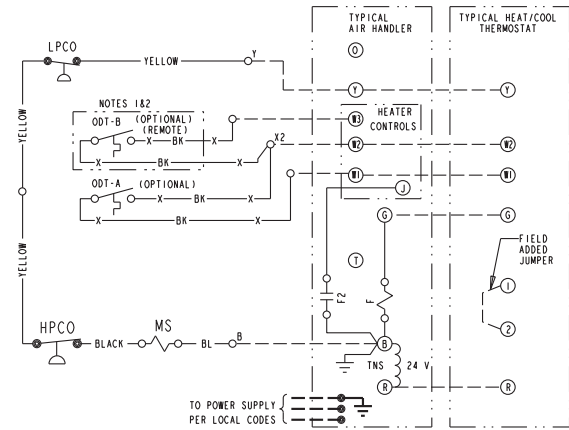


NOTES:

1. IF ODT-B IS NOT USED, ADD JUMPER BETWEEN W2 & W3 AT AIR HANDLER. IF USED, ODT-B MUST BE MOUNTED REMOTE OF CONTROL BOX IN AN APPROVED WEATHER PROOF ENCLOSURE.
2. IF ODT-A IS NOT USED, ADD JUMPER BETWEEN W1 & W2 AT AIR HANDLER.
3. LOW VOLTAGE (24 V.) FIELD WIRING MUST BE 18 AWG MIN.

<p>⚠ WARNING HAZARDOUS VOLTAGE! DISCONNECT ALL ELECTRIC POWER INCLUDING REMOTE DISCONNECTS BEFORE SERVICING. FAILURE TO DISCONNECT POWER BEFORE SERVICING CAN CAUSE SEVERE PERSONAL INJURY OR DEATH!</p>	<p>⚠ CAUTION USE COPPER CONDUCTORS ONLY! UNIT TERMINALS ARE NOT DESIGNED TO ACCEPT OTHER TYPES OF CONDUCTORS. FAILURE TO DO SO MAY CAUSE DAMAGE TO THE EQUIPMENT!</p>
---	--

NOTE
THREE PHASE MOTOR (S) FACTORY SUPPLIED IN THIS EQUIPMENT PROTECTED UNDER PRIMARY SINGLE-PHASE CONDITIONS.



NOTES:

1. IF ODT-B IS NOT USED, ADD JUMPER BETWEEN W2 & W3 AT AIR HANDLER. IF USED, ODT-B MUST BE MOUNTED REMOTE OF CONTROL BOX IN AN APPROVED WEATHER PROOF ENCLOSURE.
2. IF ODT-A IS NOT USED, ADD JUMPER BETWEEN W1 & W2 AT AIR HANDLER.
3. LOW VOLTAGE (24 V.) FIELD WIRING MUST BE 18 AWG MIN.

<p>⚠ WARNING HAZARDOUS VOLTAGE! DISCONNECT ALL ELECTRIC POWER INCLUDING REMOTE DISCONNECTS BEFORE SERVICING. FAILURE TO DISCONNECT POWER BEFORE SERVICING CAN CAUSE SEVERE PERSONAL INJURY OR DEATH!</p>	<p>⚠ CAUTION USE COPPER CONDUCTORS ONLY! UNIT TERMINALS ARE NOT DESIGNED TO ACCEPT OTHER TYPES OF CONDUCTORS. FAILURE TO DO SO MAY CAUSE DAMAGE TO THE EQUIPMENT!</p>
---	--

NOTE
THREE PHASE MOTOR (S) FACTORY SUPPLIED IN THIS EQUIPMENT PROTECTED UNDER PRIMARY SINGLE-PHASE CONDITIONS.

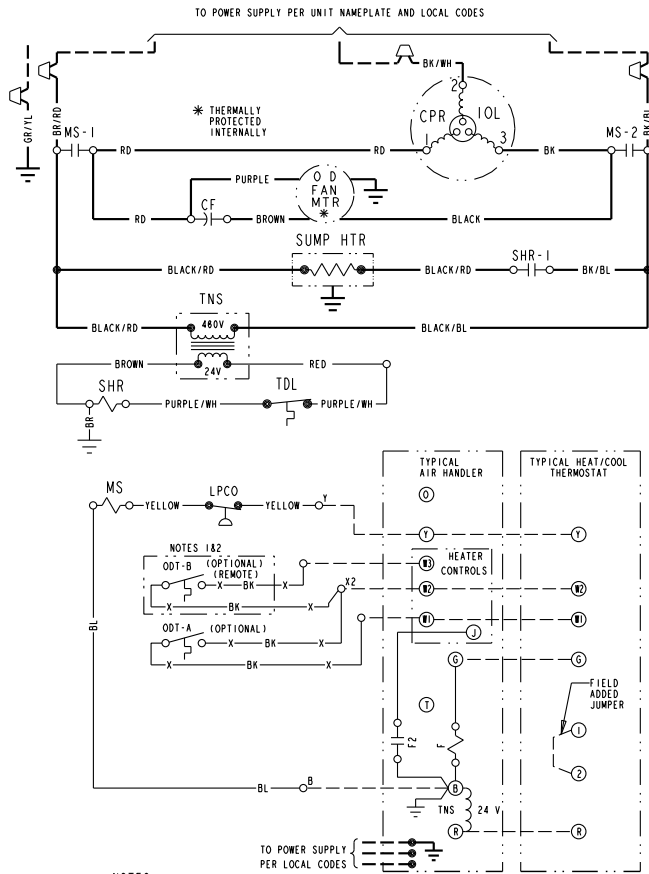


Electrical Data

SCHEMATIC DIAGRAMS

(SEE LEGEND)

2TTA0030-060A4000C



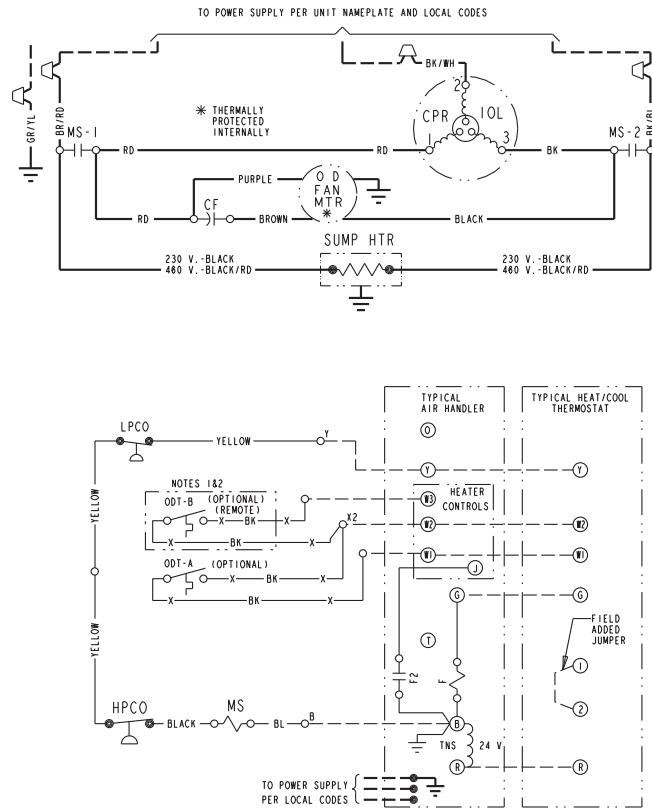
NOTES:

1. IF ODT-B IS NOT USED, ADD JUMPER BETWEEN W2 & W3 AT AIR HANDLER.
IF USED, ODT-B MUST BE MOUNTED REMOTE OF CONTROL BOX IN AN APPROVED WEATHER PROOF ENCLOSURE.
2. IF ODT-A IS NOT USED, ADD JUMPER BETWEEN W1 & W2 AT AIR HANDLER.
3. LOW VOLTAGE (24 V.) FIELD WIRING MUST BE 18 AWG MIN.

<p>⚠ WARNING HAZARDOUS VOLTAGE! DISCONNECT ALL ELECTRIC POWER INCLUDING REMOTE DISCONNECTS BEFORE SERVICING. FAILURE TO DISCONNECT POWER BEFORE SERVICING CAN CAUSE SEVERE PERSONAL INJURY OR DEATH!</p>	<p>⚠ CAUTION USE COPPER CONDUCTORS ONLY! UNIT TERMINALS ARE NOT DESIGNED TO ACCEPT OTHER TYPES OF CONDUCTORS. FAILURE TO DO SO MAY CAUSE DAMAGE TO THE EQUIPMENT!</p>
---	--

NOTE
THREE PHASE MOTOR (S) FACTORY SUPPLIED IN THIS EQUIPMENT PROTECTED UNDER PRIMARY SINGLE-PHASE CONDITIONS.

2TTA0072A4000C



NOTES:

1. IF ODT-B IS NOT USED, ADD JUMPER BETWEEN W2 & W3 AT AIR HANDLER.
IF USED, ODT-B MUST BE MOUNTED REMOTE OF CONTROL BOX IN AN APPROVED WEATHER PROOF ENCLOSURE.
2. IF ODT-A IS NOT USED, ADD JUMPER BETWEEN W1 & W2 AT AIR HANDLER.
3. LOW VOLTAGE (24 V.) FIELD WIRING MUST BE 18 AWG MIN.

<p>⚠ WARNING HAZARDOUS VOLTAGE! DISCONNECT ALL ELECTRIC POWER INCLUDING REMOTE DISCONNECTS BEFORE SERVICING. FAILURE TO DISCONNECT POWER BEFORE SERVICING CAN CAUSE SEVERE PERSONAL INJURY OR DEATH!</p>	<p>⚠ CAUTION USE COPPER CONDUCTORS ONLY! UNIT TERMINALS ARE NOT DESIGNED TO ACCEPT OTHER TYPES OF CONDUCTORS. FAILURE TO DO SO MAY CAUSE DAMAGE TO THE EQUIPMENT!</p>
---	--

NOTE
THREE PHASE MOTOR (S) FACTORY SUPPLIED IN THIS EQUIPMENT PROTECTED UNDER PRIMARY SINGLE-PHASE CONDITIONS.



Electrical Data

SCHEMATIC DIAGRAMS

LEGEND

COLOR OF WIRE BK/BL BLACK WIRE WITH BLUE MARKER COLOR OF MARKER					
BK	BLACK	OR	ORANGE	YL	YELLOW
BL	BLUE	RD	RED	GR	GREEN
BR	BROWN	WH	WHITE	PR	PURPLE

SYMBOLS

	24 V.	}	FACTORY WIRING
	LINE V.		
	24 V.	}	FIELD WIRING
	LINE V.		
	FIELD INSTALLED FACTORY WIRING		
	GROUND		
	JUNCTION		
	WIRE NUT OR CONNECTOR		
	COIL		
	CAPACITOR		
	RELAY CONTACT (N.O.)		
	RELAY CONTACT (N.C.)		
	THERMISTOR		
	INTERNAL OVERLOAD PROTECTOR		
	PRESSURE ACTUATED SWITCH		
	TEMP. ACTUATED SWITCH		
	POL. PLUG FEMALE HOUSING (MALE TERM.)		
	POL. PLUG MALE HOUSING (FEMALE TERM.)		
	RESISTOR OR HEATING ELEMENT		
	MOTOR WINDING		
	TERMINAL		

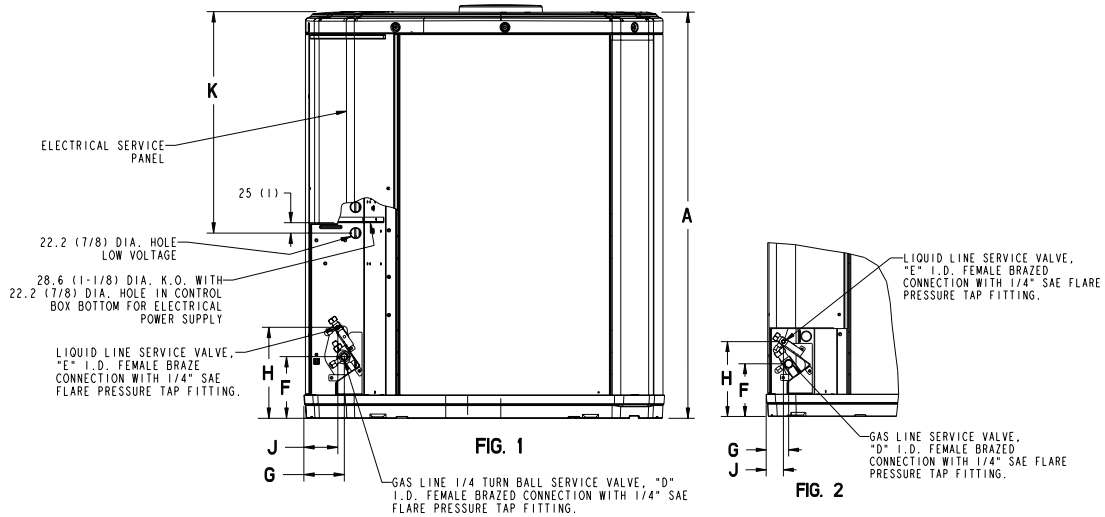
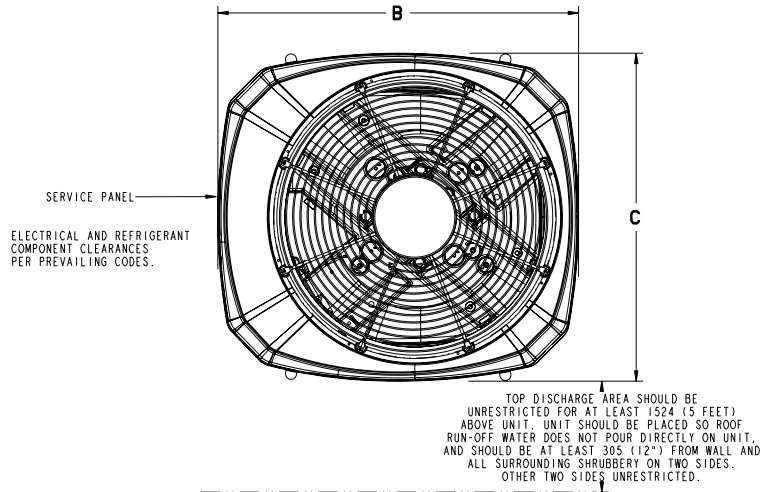
CA	COOLING ANTICIPATOR	LPCO	LOW PRESSURE CUTOUT SW.
CBS	COIL BOTTOM SENSOR	MS	COMPRESSOR MOTOR CONTACTOR
CF	FAN CAPACITOR	ODA	OUTDOOR ANTICIPATOR
CN	WIRE CONNECTOR	OFT	OUTDOOR FAN THERMOSTAT
CPR	COMPRESSOR	ODS	OUTDOOR TEMPERATURE SENSOR
CR	RUN CAPACITOR	ODT	OUTDOOR THERMOSTAT
CS	STARTING CAPACITOR	RHS	RESISTANCE HEAT SWITCH
CSR	CAPACITOR SWITCHING RELAY	SC	SWITCHOVER VALVE SOLENOID
DFC	DEFROST CONTROL	SHR	SUMP HEAT RELAY
F	INDOOR FAN RELAY	SM	SYSTEM "ON-OFF" SWITCH
HA	HEATING ANTICIPATOR	TDL	DISCHARGE LINE THERMOSTAT
HPCO	HIGH PRESSURE CUTOUT SW.	TNS	TRANSFORMER
IOL	INTERNAL OVERLOAD PROTECTOR	TS	HEATING-COOLING THERMOSTAT
		TSH	HEATING THERMOSTAT



Dimensions

2TTA0 OUTLINE DRAWING

NOTE: ALL DIMENSIONS ARE IN MM (INCHES)



MODELS	BASE	FIG.	A	B	C	D	E	F	G	H	J	K
2TTA0030A	2	2	651 (25-5/8)	724 (28-1/2)	651 (25-5/8)	3/4	5/16	127 (5)	57 (2-1/4)	181 (7-1/8)	44 (1-3/4)	457 (18)
2TTA0036A	2	2	651 (25-5/8)	724 (28-1/2)	651 (25-5/8)	7/8	3/8	127 (5)	57 (2-1/4)	181 (7-1/8)	44 (1-3/4)	457 (18)
2TTA0042A	2	2	730 (28-3/4)	724 (28-1/2)	651 (25-5/8)	7/8	3/8	137 (5-3/8)	65 (2-5/8)	210 (8-1/4)	57 (2-1/4)	457 (18)
2TTA0048A	2	2	730 (28-3/4)	724 (28-1/2)	651 (25-5/8)	1-1/8	3/8	137 (5-3/8)	65 (2-5/8)	210 (8-1/4)	57 (2-1/4)	457 (18)
2TTA0060A	3	1	832 (32-3/4)	829 (32-5/8)	756 (29-3/4)	1-1/8	3/8	143 (5-5/8)	92 (3-5/8)	210 (8-1/4)	79 (3-1/8)	508 (20)
2TTA0072A	4	1	1045 (41-1/8)	946 (37-1/4)	870 (34-1/4)	1-1/8	3/8	152 (6)	98 (3-7/8)	219 (8-5/8)	86 (3-3/8)	508 (20)

From Dwg. 21D153074 Rev. 5



Mechanical Specification Options

General

The 2TTA0 shall be designed to operate at outdoor ambient temperatures as high as 115°F. Cooling capacities shall be matched with a wide selection of air handlers and furnace coils. The unit shall be certified to UL Standard 1995. Exterior must be designed for outdoor application.

Casing

Unit casing is constructed of heavy gauge, galvanized steel and painted with a weather-resistant powder paint. Corrosion and weatherproof CMBP-G30 DuraTuff™ base.

Refrigerant Controls

Refrigeration system controls include condenser fan and compressor contactor. High and low pressure controls are inherent to the compressor. Another standard feature is the liquid line dryer.

Compressor

The Climatuff® compressor features internal over temperature and pressure protector, total dipped hermetic motor and thermostatically controlled sump heater. Other features include: roto lock suction and discharge refrigeration

connections, centrifugal oil pump, and low vibration and noise.

Condenser Coil

The Spine Fin™ coil shall be continuously wrapped, corrosion resistant all aluminum with minimum brazed joints. This coil is 3/8 inch O.D. seamless aluminum glued to a continuous aluminum fin. Coils are lab tested to withstand 2,000 pounds of pressure per square inch. The outdoor coil provides low airflow resistance and efficient heat transfer. The coil is protected on all four sides by louvered panels.

Low Ambient Cooling

As manufactured, this unit has a cooling capability to 55°F. The addition of an evaporator defrost control permits operation to 40°F. The addition of an evaporator defrost control with TXV permits low ambient cooling to 30°F.

Accessories

Thermostats — Heating/Cooling (manual and automatic changeover). Sub-base to match thermostat and locking thermostat cover.

Evaporator Defrost Control — See Low Ambient Cooling.

Outdoor Thermostat — Supplemental heat outdoor ambient lockout from 46 to -10°F.



Trane
www.trane.com

02/10

Since Trane has a policy of continuous product and product data improvement, it reserves the right to change design and specifications without notice.