

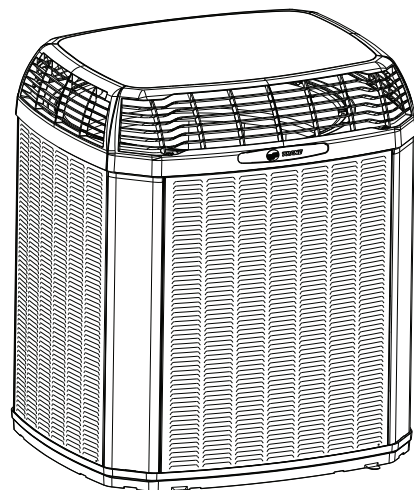


Product and Submittal Data

Multi-Speed Air Conditioners and Heat Pumps with WeatherGuard™ featuring ComfortSeek™

5TTX7024A1000A
5TTX7036A1000A
5TTX7048A1000A
5TTX7060A1000A

5TWX7024A1000A
5TWX7036A1000A
5TWX7048A1000A
5TWX7060A1000A



Note: "Graphics in this document are for representation only.
Actual model may differ in appearance."



Copyright

This document and the information in it are the property of Trane, and may not be used or reproduced in whole or in part without written permission. Trane reserves the right to revise this publication at any time, and to make changes to its content without obligation to notify any person of such revision or change.

Trademark

All trademarks referenced in this document are the trademarks of their respective owners.

Data Notes

This document supersedes and includes data from the documents listed below.

Table 1. Data notes

Literature Number	Title
ODR-PRD031*-EN	Trane Multi-Speed Heat Pumps and Air Conditioners 5TTX7/5TWX7 Product Data



Table of Contents

Product Specifications	4
Sound Data.....	6
Optional Accessories	7
General Data.....	7
Model Nomenclature	8
Wiring Diagram	9
Dimensional Data.....	10
Mechanical Specification Options.....	11



Product Specifications

Table 2. 5TTX7024A, 5TTX7036A, 5TTX7048A, and 5TTX7060A air conditioner models

OUTDOOR UNIT ^{(a) (b)}	5TTX7024A	5TTX7036A	5TTX7048A	5TTX7060A
POWER CONNS. – V/PH/HZ ^(c)	208-230/1/60	208-230/1/60	208-230/1/60	208-230/1/60
MIN. BRCH. CIR. AMPACITY	18	29	33	39
BR. CIR. PROT. RTG. – REC/MAX. (AMPS)	20/30	30/40	35/50	40/60
COMPRESSOR	SCROLL	SCROLL	SCROLL	SCROLL
NO. USED—NO. SPEEDS	1-MULTI	1-MULTI	1-MULTI	1-MULTI
MRC	17.8	27.1	39.2	46.1
FACTORY INSTALLED				
START COMPONENTS ^(d)	N/A	N/A	N/A	N/A
INSULATION/SOUND BLANKET	NO	NO	NO	NO
COMPRESSOR HEAT	YES	YES	YES	YES
OUTDOOR FAN				
DIA. (IN.) – NO. USED	23-1	23-1	27.5-1	27.5-1
TYPE DRIVE – NO. SPEEDS	DIRECT-VARIABLE	DIRECT-VARIABLE	DIRECT-VARIABLE	DIRECT-VARIABLE
NO. MOTORS – HP	1-1/3	1-1/3	1-1/2	1-1/2
MOTOR SPEED R.P.M.	600-1050	600-1050	600-1050	600-1050
VOLTS/PH/HZ	245-385/3/60	245-385/3/60	245-385/3/60	245-385/3/60
MOC	1.5	1.5	2.3	2.3
OUTDOOR COIL – TYPE	Spine Fin TM	Spine Fin TM	Spine Fin TM	Spine Fin TM
ROWS – F.P.I.	1-24	1-24	1-24	1-24
FACE AREA (SQ. FT.)	23.75	23.75	27.87	27.87
TUBE SIZE (IN.)	3/8	3/8	3/8	3/8
REFRIGERANT	R-454B	R-454B	R-454B	R-454B
LBS. – R-454B (O.D. UNIT) ^(e)	4 LBS., 0 OZ	4 LBS., 4 OZ	6 LBS., 0 OZ	6 LBS., 0 OZ
FACTORY SUPPLIED	YES	YES	YES	YES
RATED LINE SIZE —IN. O.D. GAS ^(f)	3/4	3/4	7/8	7/8
RATED LINE SIZE —IN. O.D. LIQ. ^(f)	5/16	5/16	5/16	3/8
CHARGING SPECIFICATIONS				
SUBCOOLING	10° F	12° F	12° F	10° F
DIMENSIONS	H x W x D	H x W x D	H x W x D	H x W x D
CRATED (IN.)	51 x 30 x 33	51 x 30 x 33	51 x 35 x 38	51 x 35 x 38
WEIGHT				
SHIPPING (LBS.)	223	223	264	264
NET (LBS.)	204	204	241	241

^(a) Certified in accordance with the Air-Source Unitary Air-conditioner Equipment certification program, which is based on AHRI standard 210/240.

^(b) Rated in accordance with AHRI standard 270/275.

^(c) Calculated in accordance with Natl. Elec. Codes. Use only HACR circuit breakers or fuses.

^(d) NA means no start components. Yes means quick start kit components. PTC means positive temperature coefficient starter.

^(e) This value approximate. For more precise value see unit nameplate.

^(f) The maximum length of refrigerant lines from outdoor to indoor varies depending on application. See Installer's Guide Table 4 for allowable applications.

Table 3. 5TWX7024A, 5TWX7036A, 5TWX7048A, and 5TWX7060A heat pump models

OUTDOOR UNIT ^{(a) (b)}	5TWX7024A	5TWX7036A	5TWX7048A	5TWX7060A
POWER CONNS. – V/PH/HZ ^(c)	208-230/1/60	208-230/1/60	208-230/1/60	208-230/1/60
MIN. BRCH. CIR. AMPACITY	18	29	33	39
BR. CIR. PROT. RTG. – REC/MAX. (AMPS)	20/30	30/40	35/50	40/60
COMPRESSOR	SCROLL	SCROLL	SCROLL	SCROLL
NO. USED— NO. SPEEDS	1-MULTI	1-MULTI	1-MULTI	1-MULTI
MRC	17.8	27.1	39.2	46.1
FACTORY INSTALLED				
START COMPONENTS ^(d)	N/A	N/A	N/A	N/A
INSULATION/SOUND BLANKET	NO	NO	NO	NO
COMPRESSOR HEAT	YES	YES	YES	YES
OUTDOOR FAN				
DIA. (IN.) – NO. USED	23-1	23-1	27.5-1	27.5-1
TYPE DRIVE – NO. SPEEDS	DIRECT-VARIABLE	DIRECT-VARIABLE	DIRECT-VARIABLE	DIRECT-VARIABLE
NO. MOTORS – HP	1-1/3	1-1/3	1-1/2	1-1/2
MOTOR SPEED R.P.M.	600-1050	600-1050	600-1050	600-1050
VOLTS/PH/HZ	245-385/3/60	245-385/3/60	245-385/3/60	245-385/3/60
MOC	1.5	1.5	2.3	2.3
OUTDOOR COIL – TYPE	Spine Fin TM	Spine Fin TM	Spine Fin TM	Spine Fin TM
ROWS – F.P.I.	1-24	1-24	1-24	1-24
FACE AREA (SQ. FT.)	23.75	23.75	27.87	27.87
TUBE SIZE (IN.)	3/8	3/8	3/8	3/8
REFRIGERANT	R-454B	R-454B	R-454B	R-454B
LBS. – R-454B (O.D. UNIT) ^(e)	4 LBS., 0 OZ	4 LBS., 4 OZ	6 LBS., 0 OZ	6 LBS., 0 OZ
FACTORY SUPPLIED	YES	YES	YES	YES
RATED LINE SIZE —IN. O.D. GAS ^(f)	3/4	3/4	7/8	7/8
RATED LINE SIZE —IN. O.D. LIQ. ^(f)	5/16	5/16	5/16	3/8
CHARGING SPECIFICATIONS				
SUBCOOLING	10° F	12° F	12° F	10° F
DIMENSIONS	H x W x D	H x W x D	H x W x D	H x W x D
CRATED (IN.)	51 x 30 x 33	51 x 30 x 33	51 x 35 x 38	51 x 35 x 38
WEIGHT				
SHIPPING (LBS.)	223	223	264	264
NET (LBS.)	204	204	241	241

^(a) Certified in accordance with the Air-Source Unitary Air-conditioner Equipment certification program, which is based on AHRI standard 210/240.

^(b) Rated in accordance with AHRI standard 270/275.

^(c) Calculated in accordance with Natl. Elec. Codes. Use only HACR circuit breakers or fuses.

^(d) NA means no start components. Yes means quick start kit components. PTC means positive temperature coefficient starter.

^(e) This value approximate. For more precise value see unit nameplate.

^(f) The maximum length of refrigerant lines from outdoor to indoor varies depending on application. See Installer's Guide Table 4 for allowable applications.



Sound Data

Table 4. 5TTX7024A, 5TTX7036A, 5TTX7048A, and 5TTX7060A air conditioner models

Model	Mode	Speed	A-Weighted Sound Power Level [dB(A)]	Full Octave Sound Power [dB]							
				63 Hz	125 Hz	250 Hz	500 Hz	1000 Hz	2000 Hz	4000 Hz	8000 Hz
5TTX7024A	Cool	Min	63	57.1	59.1	56.8	59.4	59.5	53.6	45.1	43.8
	Cool	Max	71	49.1	70.4	63.7	65.5	68.4	63.4	53.2	49.7
5TTX7036A	Cool	Min	67	69.5	58.8	56.2	60.1	59.5	63.5	46.1	47.4
	Cool	Max	72	76.0	69.1	64.5	67.1	69.7	63.6	53.6	52.6
5TTX7048A	Cool	Min	70	69.5	71.0	66.2	70.1	64.1	57.7	55.7	48.8
	Cool	Max	75	76.0	79.8	75.0	74.3	69.1	63.0	61.3	53.7
5TTX7060A	Cool	Min	70	69.5	71.0	66.2	70.1	64.1	57.7	55.7	48.8
	Cool	Max	75	76.0	79.8	75.0	74.3	69.1	63.0	61.3	53.7

Note: Rated in accordance with AHRI Standard 270.

Table 5. 5TWX7024A, 5TWX7036A, 5TWX7048A, and 5TWX7060A heat pump models

Model	Mode	Speed	A-Weighted Sound Power Level [dB(A)]	Full Octave Sound Power [dB]							
				63 Hz	125 Hz	250 Hz	500 Hz	1000 Hz	2000 Hz	4000 Hz	8000 Hz
5TWX7024A	Cool	Min	63	57.1	59.1	56.8	59.4	59.5	53.6	45.1	43.8
	Cool	Max	71	49.1	70.4	63.7	65.5	68.4	63.4	53.2	49.7
	Heat	Min	69	56.7	60.7	58.1	62.8	66.1	60.9	51.7	49.0
	Heat	Max	73	76.0	74.8	68.0	68.1	69.7	64.5	56.6	55.1
5TWX7036A	Cool	Min	67	69.5	58.8	56.2	60.1	59.5	63.5	46.1	47.4
	Cool	Max	72	76.0	69.1	64.5	67.1	69.7	63.6	53.6	52.6
	Heat	Min	72	87.4	71.1	66.5	68.6	68.5	61.7	52.8	52.6
	Heat	Max	75	76.0	73.8	67.6	70.9	71.4	65.0	56.1	53.6
5TWX7048A	Cool	Min	70	69.5	71.0	66.2	70.1	64.1	57.7	55.7	48.8
	Cool	Max	75	76.0	79.8	75.0	74.3	69.1	63.0	61.3	53.7
	Heat	Min	72	87.4	72.3	72.3	69.2	67.2	61.2	60.2	52.5
	Heat	Max	75	76.0	79.8	75.0	74.3	69.1	63.0	61.3	53.7
5TWX7060A	Cool	Min	70	69.5	71.0	66.2	70.1	64.1	57.7	55.7	48.8
	Cool	Max	75	76.0	79.8	75.0	74.3	69.1	63.0	61.3	53.7
	Heat	Min	72	87.4	72.3	72.3	69.2	67.2	61.2	60.2	52.5
	Heat	Max	75	76.0	79.8	75.0	74.3	69.1	63.0	61.3	53.7

Note: Rated in accordance with AHRI Standard 270.



Optional Accessories

Table 6. Optional accessories

Rubber Isolator Kit	BAYISLT101
Snow Leg — Base & Cap 4" High	BAYLEGS002
Snow Leg — 4" Extension	BAYLEGS003
Extreme Condition Mounting Kit	BAYECMT023
Refrigerant Lineset ^(a)	

^(a) 25, 30, 35 and 50 foot linesets available. For a complete listing of lineset options available from equipment or supply stores, refer to the Trane Residential and Light Commercial Product Handbook.

General Data

AHRI standard 210/240 rating conditions:

- Cooling: 80°F DB; air entering indoor coil: 67°F WB; air entering outdoor coil: 95°F DB
- High temperature heating: 47°F DB; air entering outdoor coil: 43°F WB; entering indoor coil: 70°F DB
- Low temperature heating: 17°F DB; air entering outdoor coil: 15°F WB; air entering indoor coil: 70°F DB
- Rated indoor airflow for heating is the same as for cooling.

AHRI standard 270 rating conditions:

The noise rating numbers are determined with the unit in cooling operation. Standard Noise Rating number is at 95°F outdoor air.



Model Nomenclature

Outdoor Units

Digit 1 — Refrigerant Type

5 = R-454B

Digit 2 — Brand

T = Trane

Digit 3 — System Type

C = Cold Climate Heat Pump

T = AC

W = HP

Digit 4 — Product Family

A = Light Commercial

B = XB

R = Wire Top Grille

V = VSPD

X = WeatherGuard Top

Digit 5 — Nominal Rated SEER2

0 = 20 SEER2

3 = 13 SEER2

4 = 14 SEER2

5 = 15 SEER2

6 = 16 SEER2

7 = 17 SEER2

8 = 18 SEER2

Digit 6 — Field Connection

0 = Brazed

5 = Mechanical

X = Link™

Digit 7, 8 — Nominal Tonnage

12 = 1.0

18 = 1.5

19 = 1.5

24 = 2.0

25 = 2.0

30 = 2.5

31 = 2.5

36 = 3.0

37 = 3.0

42 = 3.5

43 = 3.5

48 = 4.0

49 = 4.0

60 = 5.0

61 = 5.0

72 = 6.0

Digit 9 — Major Design Change

A Thru Z Mode = No F, I, 0

Digit 10 — Power Supply (Voltage/Phz/Hz)

1 = 200-208-230/1/60

3 = 200-230/3/60

4 = 460/3/60

5 = 400/3/60

A = 220-240/1/50

D = 380-415/3/50

Digit 11, 12, 13 — Other Functions

000 = Typical-no meaning

Digit 14 — Minor Design Change

A Thru Z Mode = No F, I, 0

Digit 15 — Service Digit - Not Orderable

A Thru Z Mode = No F, I, 0



LEGEND



Dimensional Data

Figure 2. Dimensional drawing

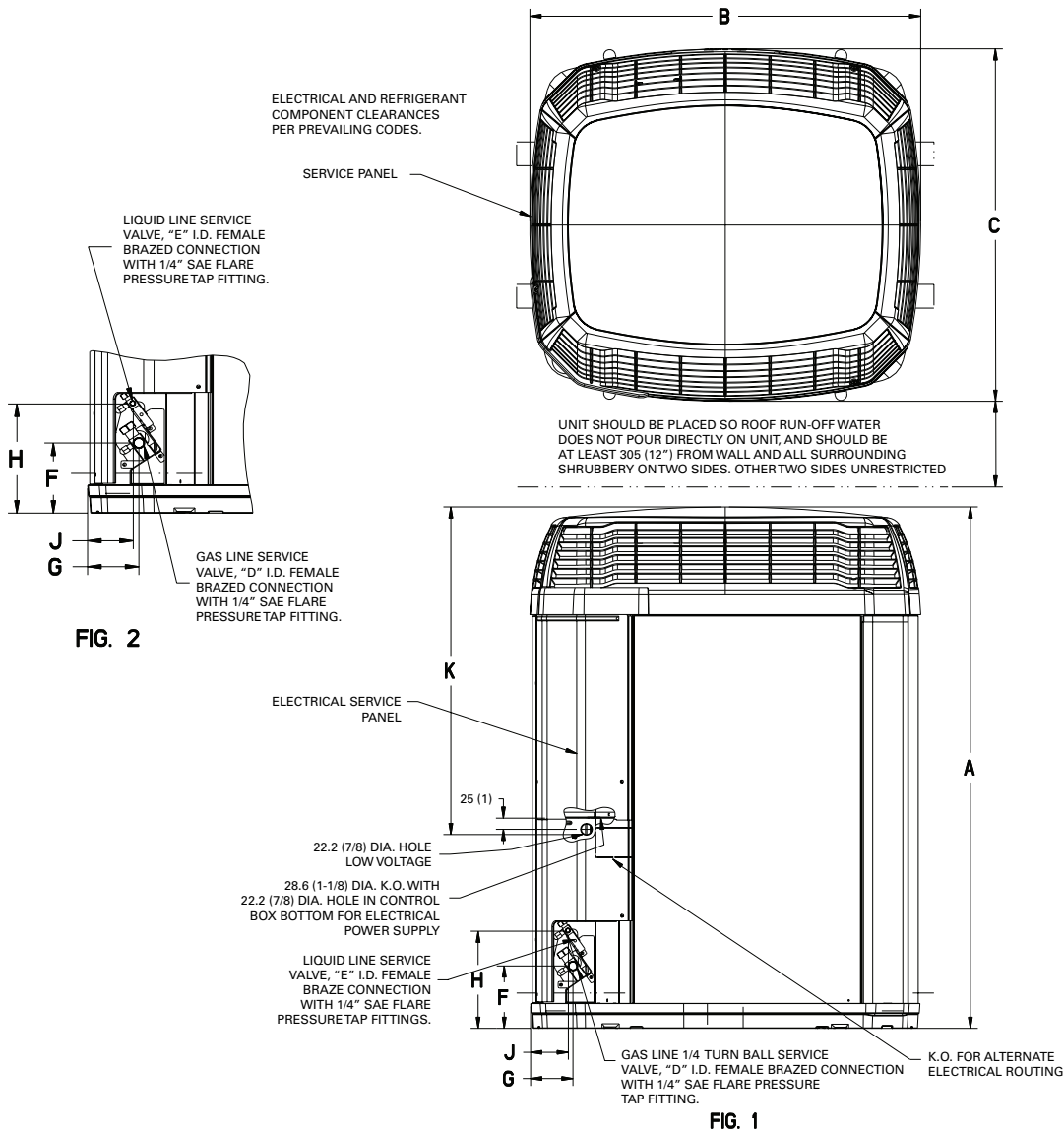


Table 7. Dimensions – mm (inches)

Model	Base	A	B	C	D	E	F	G	H	J	K
5TTX7024A/ 5TWX7024A	3	1178.106 (46.39)	829 (32-5/8)	756 (29-3/4)	16-5/8	8-5/16	127 (5)	76 (3)	197 (7-3/4)	57 (2-1/4)	813 (32)
5TTX7036A/ 5TWX7036A	3	1178.106 (46.39)	829 (32-5/8)	756 (29-3/4)	16-5/8	8-5/16	127 (5)	76 (3)	197 (7-3/4)	57 (2-1/4)	813 (32)
5TTX7048A/ 5TWX7048A	4	1178.106 (46.39)	946 (37-1/4)	870 (34-1/4)	19-3/4	8-5/16	127 (5)	76 (3)	197 (7-3/4)	57 (2-1/4)	813 (32)
5TTX7060A/ 5TWX7060A	4	1178.106 (46.39)	946 (37-1/4)	870 (34-1/4)	19-3/4	8-5/16	127 (5)	76 (3)	197 (7-3/4)	57 (2-1/4)	813 (32)



Mechanical Specification Options

General

This unit is designed to operate at outdoor ambient temperatures 55°F to 120°F in cooling. From — 0°F to 66°F in heating (heat pumps only). Only AHRI approved indoor matches are approved for use with these models.

Casing

Unit casing is constructed of heavy gauge. G60 galvanized steel and painted with a weather-resistant powder paint on all louvered panels and prepaint on all other panels. Corrosion and weatherproof CMBP-G30 DuraTuff™ base.

Refrigerant Controls

Refrigeration system controls include condenser fan, compressor inverter drive and high and low pressure switches. A factory supplied, field installed filter is standard.

Compressor

Inverter driven compressor with variable output capacities. Compressor protections reduce operating speed and current draw to maintain operation while protecting the compressor.

Condenser Coil

The Spine Fin™ outdoor coil provides low airflow resistance and efficient heat transfer. The coil is protected on all four sides by louvered panels.

Low Ambient Cooling

As manufactured, this system has built in freeze protection that will allow cooling operation below 55°F but will reduce capacity or shut down completely to prevent operation under adverse conditions.



Trane - by Trane Technologies (NYSE: TT), a global innovator - creates comfortable, energy efficient indoor environments for commercial and residential applications. For more information, please visit trane.com or tranetechnologies.com.



The AHRI Certified mark indicates Trane U.S. Inc. participation in the AHRI Certification program. For verification of individual certified products, go to ahridirectory.org.

Trane has a policy of continuous data improvement and it reserves the right to change design and specifications without notice. We are committed to using environmentally conscious print practices.