



Product Data

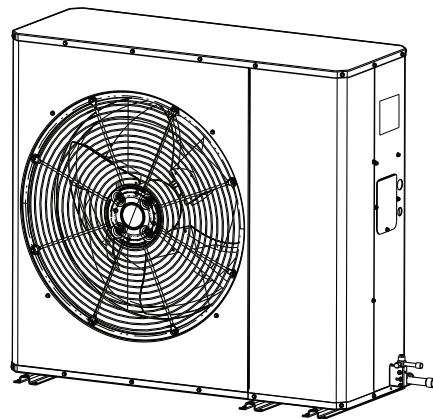
Side Discharge AC Models

For coastal applications where units are installed within one (1) mile of salt water, epoxy coated models are recommended. These models have an 8 week lead time after order.

4TTS6036A3000A
4TTS6048A3000A
4TTS6060A3000A
4TTS6036A4000A
4TTS6048A4000A
4TTS6060A4000A

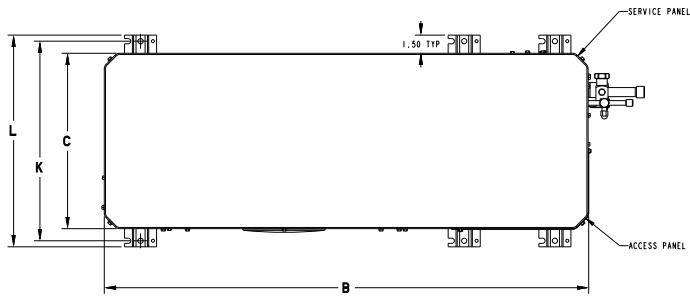
Epoxy Coated Model

4TTS6036A3COTA
4TTS6048A3COTA
4TTS6060A3COTA
4TTS6036A4COTA
4TTS6048A4COTA
4TTS6060A4COTA



Note: "Graphics in this document are for representation only. Actual model may differ in appearance."

Outline Drawing



▲ SHOULD BE AT LEAST 152.4 (6 INCHES) FROM WALL AND 609.6 (2 FEET) FROM SURROUNDING SHRUBBERY ON ALL SIDES.

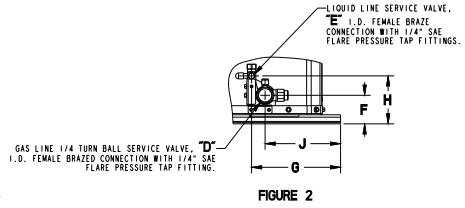


FIGURE 2

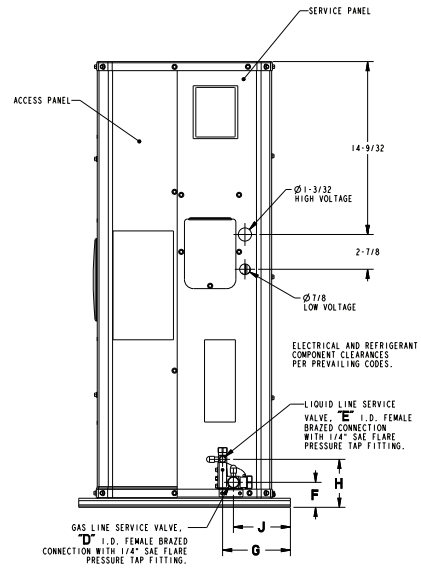
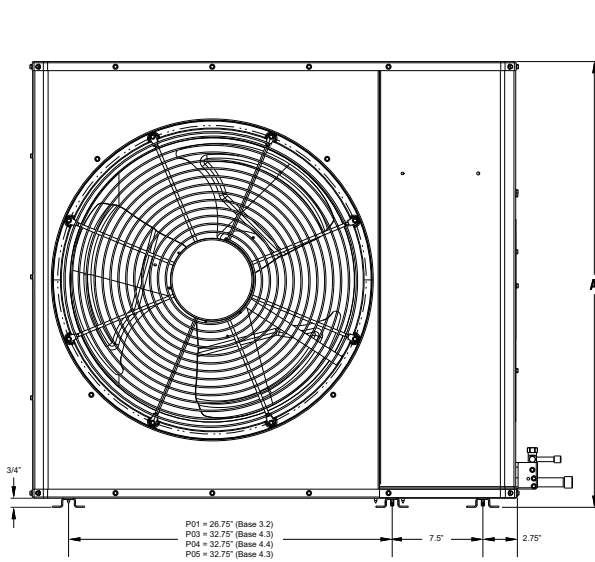


FIGURE 1

DWG. D159818_Rev D

Model	Base	A	B	C	D	E	F	G	H	J	K	L
4TTS6036A	4.3	934 (36-3/4)	1194 (47)	445 (17-1/2)	22 (7/8)	10 (3/8)	53 (2-1/16)	187 (7-11/32)	101 (3-31/32)	159 (6-1/4)	495 (19-1/2)	521 (20-1/2)
4TTS6048A	4.3	934 (36-3/4)	1194 (47)	445 (17-1/2)	22 (7/8)	10 (3/8)	53 (2-1/16)	187 (7-11/32)	101 (3-31/32)	159 (6-1/4)	495 (19-1/2)	521 (20-1/2)
4TTS6060A	4.4	1086 (42-3/4)	1194 (47)	445 (17-1/2)	22 (7/8)	10 (3/8)	60 (2-3/8)	187 (7-11/32)	101 (3-31/32)	159 (6-1/4)	495 (19-1/2)	521 (20-1/2)



Sound Power Level Table

MODEL	A-Weighted Sound Power Level [dB (A)]	Full Octave Sound Power (dB)							
		63 Hz	125 Hz	250 Hz	500 Hz	1000 Hz	2000 Hz	4000 Hz	8000 Hz
4TTS6036A	72	75	75	75	70	66	61	57	49
4TTS6048A	75	73	79	77	72	70	63	57	50
4TTS6060A	75	77	78	77	71	69	66	60	57

Note: Tested in accordance with AHRI Standard 270

MODEL	Sound Pressure [dB(A)]			
	3 ft	5 ft	10 ft	15 ft
4TTS6036A	65	60	54	51
4TTS6048A	68	63	57	54
4TTS6060A	68	63	57	54

Note: Tested in accordance with AHRI Standard 275



Product Specifications

Model No. ^(a)	4TTS6036A3XXXA	4TTS6048A3XXXA	4TTS6060A3XXXA
HIGH SPEED COOLING CAPACITY@ 80/67-95 (Btuh)	35000	46500	56000
POWER CONNS. — V/PH/HZ ^(b)	208/230/3/60	208/230/3/60	208/230/3/60
MIN. BRCH. CIR. AMPACITY	11.3	18.3	20.9
BR. CIR. PROT. RTG. — MAX. (AMPS)	15	30	35
COMPRESSOR	CLIMATUFF®- SCROLL	CLIMATUFF®- SCROLL	CLIMATUFF®- SCROLL
RL AMPS — LR AMPS	8.5 — 70	13.8 — 83.1	17.7 — 110
Outdoor Fan FL AMPS	0.64	1.05	1.05
Fan HP	1/8	1/5	1/5
Fan Dia (inches)	27.0	27	27
Coil	PLATE FIN	PLATE FIN	PLATE FIN
Refrigerant R-410A	6 LBS., 3 OZ	6 LBS., 6 OZ	7 LBS., 4 OZ
LINE SIZE — IN. O.D. GAS ^(c)	3/4	7/8	1-1/8
LINE SIZE — IN. O.D. LIQ.	3/8	3/8	3/8
Charge Spec. Subcooling	10°F	10°F	10°F
Dimensions H x W X D Crated (IN.)	40.88 x 54.5 x 23.0	40.88 x 54.5 x 23.0	46.88 x 54.5 x 23.0
Weight — Shipping (lbs.)	242	243	263
Weight — Net (lbs.)	215	216	236
Optional Accessories:			
Evaporator Defrost Control	AY28X079	AY28X079	AY28X079
Rubber Isolator Kit	BAYISLT101	BAYISLT101	BAYISLT101
Start Kit	BAYKSKT263	BAYKSKT263	BAYKSKT263
Crankcase Heater Kit	BAYCCHT302RES	BAYCCHT301RES	BAYCCHT301RES
Snow Leg Kit 4"	BAYLEGS004	BAYLEGS004	BAYLEGS004
Snow Leg Kit 7"	BAYLEGS007	BAYLEGS007A	BAYLEGS007A
Scroll Compressor Enclosure	BAYSDEN003	BAYSDEN004	BAYSDEN004
Low Ambient Kit	BAYLOAM107A	BAYLOAM107A	BAYLOAM107A
Wall Mount Kit ^(d)	BRK05033	BRK05033	BRK05033
Wind Baffle Kit	BAYWIND101	BAYWIND101	BAYWIND101
Refrigerant Lineset ^(e)			

^(a) Certified in accordance with the Unitary Air-conditioner equipment certification program which is based on AHRI standard 210/240.

^(b) Calculated in accordance with N.E.C. Only use HACR circuit breakers or fuses.

^(c) Standard line lengths — 150', Standard lift — 50' Suction and Liquid line. For Greater lengths and lifts refer to refrigerant piping software Pub#32-3312-0* (* denotes latest revision).

^(d) Available from Trane Parts

^(e) 25, 30, 35 and 50 foot linesets available. For a complete listing of lineset options available from equipment or supply stores, refer to the Trane Residential and Light Commercial Product Handbook.

Product Specifications

Model No. ^(a)	4TTS6036A4XXXA	4TTS6048A4XXXA	4TTS6060A4XXXA
HIGH SPEED COOLING CAPACITY@ 80/67-95 (Btuh)	35000	46500	56000
POWER CONNS. — V/PH/HZ ^(b)	460/3/60	460/3/60	460/3/60
MIN. BRCH. CIR. AMPACITY	5.2	8.4	9.5
BR. CIR. PROT. RTG. — MAX. (AMPS)	15	15	15
COMPRESSOR	CLIMATUFF®- SCROLL	CLIMATUFF®- SCROLL	CLIMATUFF®- SCROLL
RL AMPS — LR AMPS	3.9 — 31	6.22 — 41	7.1 — 52
Outdoor Fan FL AMPS	0.38	0.6	0.6
Fan HP	1/8	1/5	1/5
Fan Dia (inches)	27.0	27	27
Coil	PLATE FIN	PLATE FIN	PLATE FIN
Refrigerant R-410A	6 LBS., 3 OZ	6 LBS., 6 OZ	7 LBS., 4 OZ
LINE SIZE — IN. O.D. GAS ^(c)	3/4	7/8	1-1/8
LINE SIZE — IN. O.D. LIQ.	3/8	3/8	3/8
Charge Spec. Subcooling	10°F	10°F	10°F
Dimensions H x W X D Crated (IN.)	40.88 x 54.5 x 23.0	40.88 x 54.5 x 23.0	46.88 x 54.5 x 23.0
Weight — Shipping (lbs.)	242	243	263
Weight — Net (lbs.)	215	216	236
Optional Accessories:			
Evaporator Defrost Control	AY28X079	AY28X079	AY28X079
Rubber Isolator Kit	BAYISLT101	BAYISLT101	BAYISLT101
Start Kit	BAYKSKT263	BAYKSKT263	BAYKSKT263
Crankcase Heater Kit	BAYCCHT302RES	BAYCCHT301RES	BAYCCHT301RES
Snow Leg Kit 4"	BAYLEGS004	BAYLEGS004	BAYLEGS004
Snow Leg Kit 7"	BAYLEGS007	BAYLEGS007A	BAYLEGS007A
Scroll Compressor Enclosure	BAYSDEN003	BAYSDEN004	BAYSDEN004
Low Ambient Kit	BAYLOAM107A	BAYLOAM107A	BAYLOAM107A
Wall Mount Kit ^(d)	BRK05033	BRK05033	BRK05033
Wind Baffle Kit	BAYWIND101	BAYWIND101	BAYWIND101
Refrigerant Lineset ^(e)			

^(a) Certified in accordance with the Unitary Air-conditioner equipment certification program which is based on AHRI standard 210/240.

^(b) Calculated in accordance with N.E.C. Only use HACR circuit breakers or fuses.

^(c) Standard line lengths — 150', Standard lift — 50' Suction and Liquid line. For Greater lengths and lifts refer to refrigerant piping software Pub#32-3312-0* (* denotes latest revision).

^(d) Available from Trane Parts.

^(e) 25, 30, 35 and 50 foot linesets available. For a complete listing of lineset options available from equipment or supply stores, refer to the Trane Residential and Light Commercial Product Handbook.



Accessory Description and Usage

Evaporation Defrost Control — SPST Temperature actuated switch that cycles the condenser off as indoor coil reaches freeze-up conditions. Used for low ambient cooling to 30°F with TXV.

Rubber Isolators — Six (6) large rubber donuts to isolate condensing unit from transmitting energy into mounting frame or pad. Use on any application where sound transmission needs to be minimized.

Hard Start Kit — Start capacitor and relay to assist compressor motor startup. Use in areas with marginal power supply, on long linesets, low ambient conditions, etc.

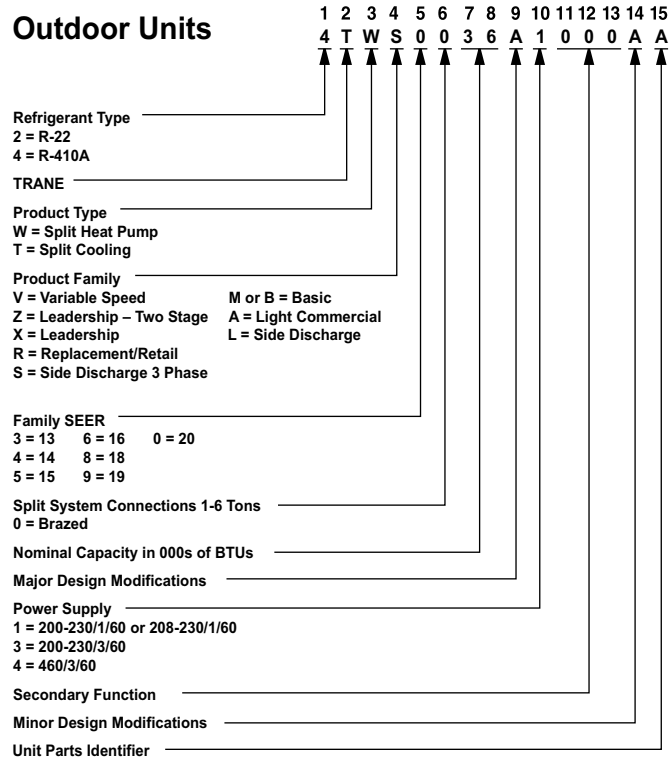
AHRI Standard Capacity Rating Conditions

AHRI Standard 210/240 Rating Conditions

1. Cooling 80°F DB, 67°F WB air entering indoor coil, 95°F DB air entering outdoor coil.

AHRI Standard 270 Rating Conditions — (Noise rating numbers are determined with the unit in cooling operations.) Standard Noise Rating number is at 95°F outdoor air.

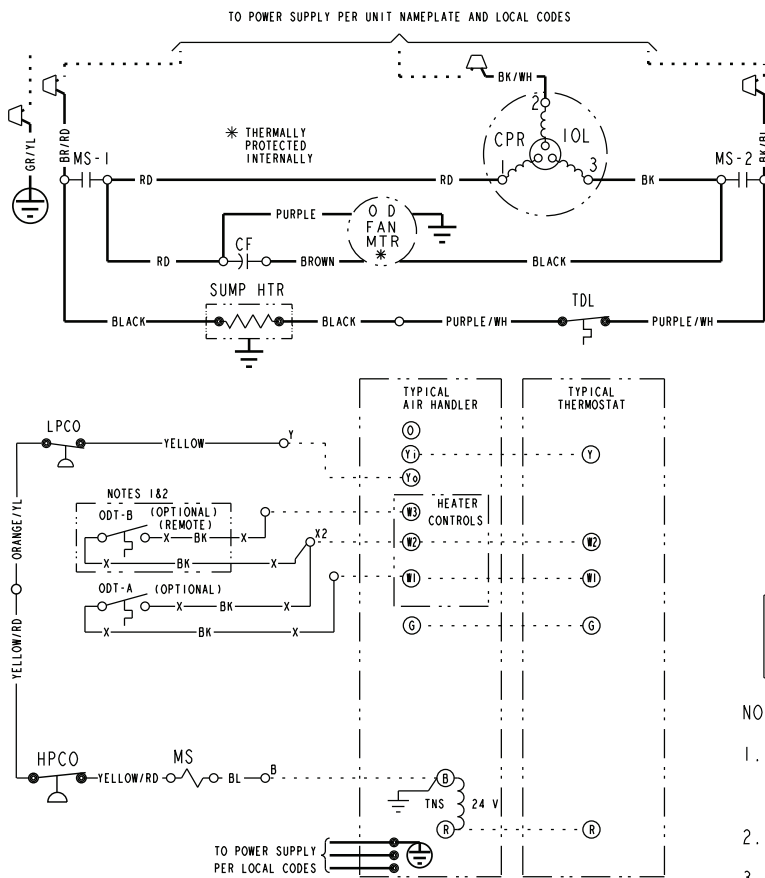
Model Nomenclature



Wiring

Figure 1. Schematic: 3.0, 4.0 and 5.0 Ton Models

230V - D157062P04



LEGEND

—	24 V. } FACTORY WIRING
---	LINE V. }
---	24 V. } FIELD WIRING
---	LINE V. }
⊕	GROUND
⊕	JUNCTION
⊕	WIRE NUT OR CONNECTOR
⊕	COMPRESSOR
⊕	RUN CAPACITOR
⊕	STARTING CAPACITOR
⊕	CAPACITOR SWITCHING RELAY
⊕	DEFROST CONTROL
⊕	INDOOR FAN RELAY
⊕	HEATING ANTICIPATOR
⊕	HIGH PRESSURE CUTOFF SW.
⊕	INTERNAL OVERLOAD PROTECTOR
⊕	LOW PRESSURE CUTOFF SW.
⊕	COMPRESSOR MOTOR CONTACTOR
⊕	OUTDOOR ANTICIPATOR
⊕	OUTDOOR FAN THERMOSTAT
⊕	OUTDOOR TEMPERATURE SENSOR
⊕	OUTDOOR THERMOSTAT
⊕	RESISTANCE HEAT SWITCH
⊕	SWITCHOVER VALVE SOLENOID
⊕	SYSTEM "ON-OFF" SWITCH
⊕	DISCHARGE LINE THERMOSTAT
⊕	TRANSFORMER
⊕	HEATING-COOLING THERMOSTAT
⊕	HEATING THERMOSTAT

—	COLOR OF WIRE
BK/BL	BLACK WIRE WITH BLUE MARKER
—	COLOR OF MARKER
BK	BLACK
OR	ORANGE
YL	YELLOW
BL	BLUE
RD	RED
GR	GREEN
BR	BROWN
WH	WHITE
PR	PURPLE

NOTE
THREE PHASE MOTOR (S) FACTORY SUPPLIED IN THIS EQUIPMENT PROTECTED UNDER PRIMARY SINGLE-PHASE CONDITIONS.

NOTES:

- IF ODT-B IS NOT USED, ADD JUMPER BETWEEN W2 & W3 AT AIR HANDLER.
IF USED, ODT-B MUST BE MOUNTED REMOTE OF CONTROL BOX IN AN APPROVED WEATHER PROOF ENCLOSURE.
- IF ODT-A IS NOT USED, ADD JUMPER BETWEEN W1 & W2 AT AIR HANDLER.
- LOW VOLTAGE (24 V.) FIELD WIRING MUST BE 18 AWG MIN.

FOR CANADIAN INSTALLATIONS
POUR INSTALLATIONS CANADIENNES

CAUTION: NOT SUITABLE FOR USE ON SYSTEMS EXCEEDING 150V - TO - GROUND
ATTENTION: NE CONVIENT PAS AUX INSTALLATIONS DE PLS DE 150 V A LA TERRE

Figure 2. Schematic: 3.0, 4.0 and 5.0 Ton Models

230V - D157062P04

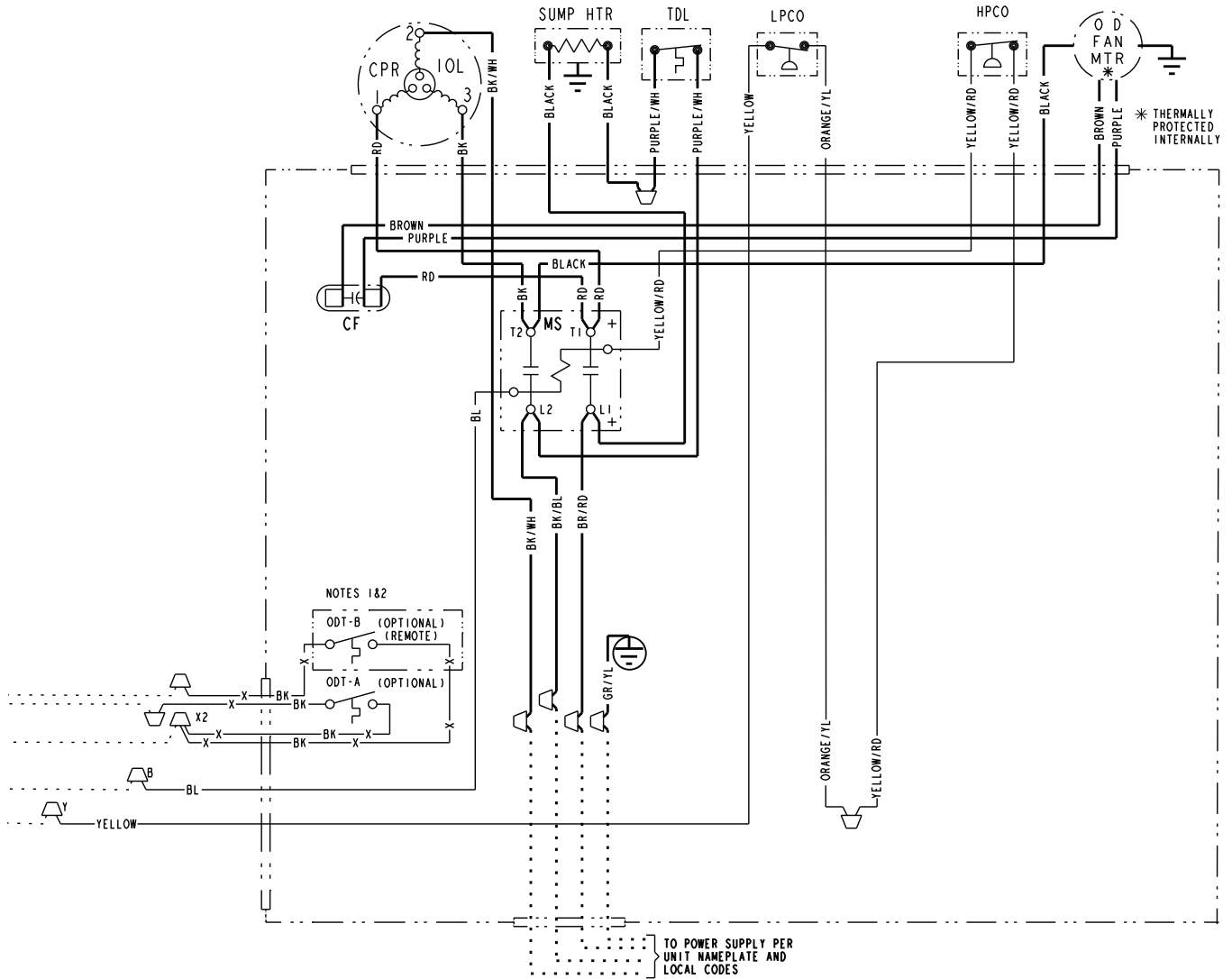
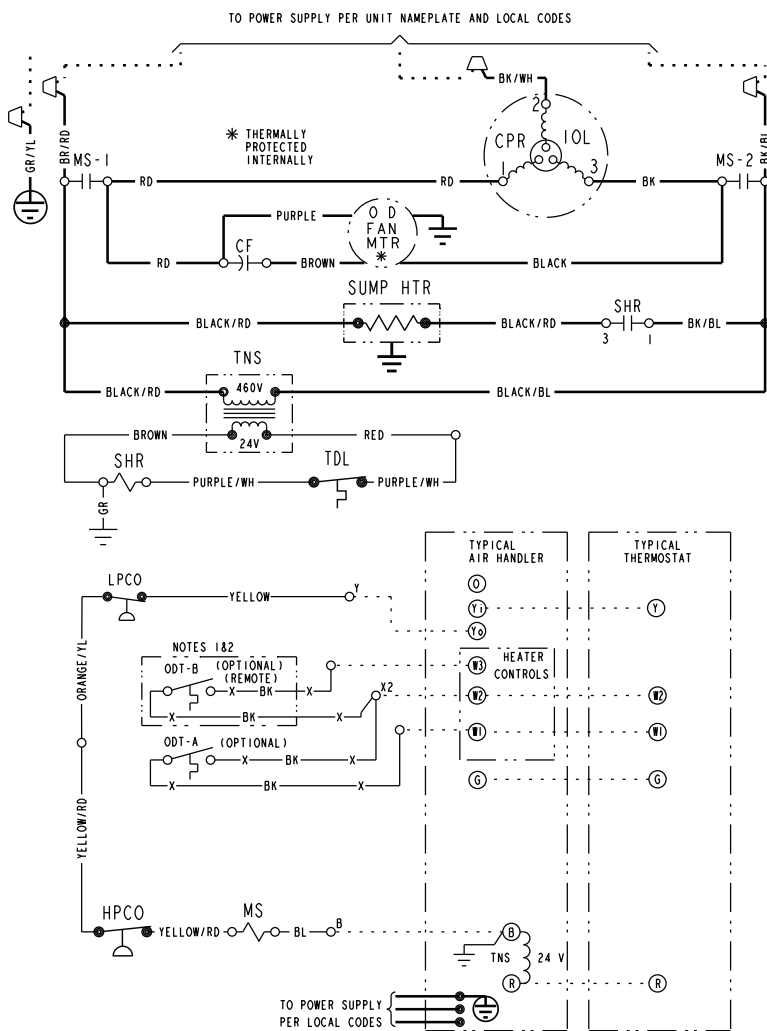


Figure 3. Schematic: 3.0, 4.0 and 5.0 Ton Models

460V - D157075P05



LEGEND

- | | | |
|------------------------------------|------|-----------------------------|
| — 24 V. LINE V. } FACTORY WIRING | CA | COOLING ANTICIPATOR |
| - - - 24 V. LINE V. } FIELD WIRING | CBS | COIL BOTTOM SENSOR |
| ⊕ | CF | FAN CAPACITOR |
| ⊖ | CN | WIRE CONNECTOR |
| • | CPR | COMPRESSOR |
| ⊕ | CR | RUN CAPACITOR |
| ⊖ | CS | STARTING CAPACITOR |
| ⊕ | CSR | CAPACITOR SWITCHING RELAY |
| ⊖ | DFC | DEFROST CONTROL |
| ⊕ | F | INDOOR FAN RELAY |
| ⊖ | HA | HEATING ANTICIPATOR |
| ⊕ | HPCO | HIGH PRESSURE CUTOFF SW. |
| ⊖ | IOL | INTERNAL OVERLOAD PROTECTOR |
| ⊕ | LPCO | LOW PRESSURE CUTOFF SW. |
| ⊖ | MS | COMPRESSOR MOTOR CONTACTOR |
| ⊕ | ODA | OUTDOOR ANTICIPATOR |
| ⊖ | OFT | OUTDOOR FAN THERMOSTAT |
| ⊕ | ODS | OUTDOOR TEMPERATURE SENSOR |
| ⊖ | ODT | OUTDOOR THERMOSTAT |
| ⊕ | RHS | RESISTANCE HEAT SWITCH |
| ⊖ | SC | SWITCHOVER VALVE SOLENOID |
| ⊕ | SM | SYSTEM "ON-OFF" SWITCH |
| ⊖ | TDL | DISCHARGE LINE THERMOSTAT |
| ⊕ | TNS | TRANSFORMER |
| ⊖ | TS | HEATING-COOLING THERMOSTAT |
| ⊕ | TSH | HEATING THERMOSTAT |
-
- | | |
|-------|-----------------------------|
| — | COLOR OF WIRE |
| BK/BL | BLACK WIRE WITH BLUE MARKER |
| BK | BLACK |
| BL | BLUE |
| BR | BROWN |
| OR | ORANGE |
| RD | RED |
| WH | WHITE |
| YL | YELLOW |
| GR | GREEN |
| PR | PURPLE |

NOTE
THREE PHASE MOTOR (S) FACTORY SUPPLIED IN THIS EQUIPMENT PROTECTED UNDER PRIMARY SINGLE-PHASE CONDITIONS.

NOTES:

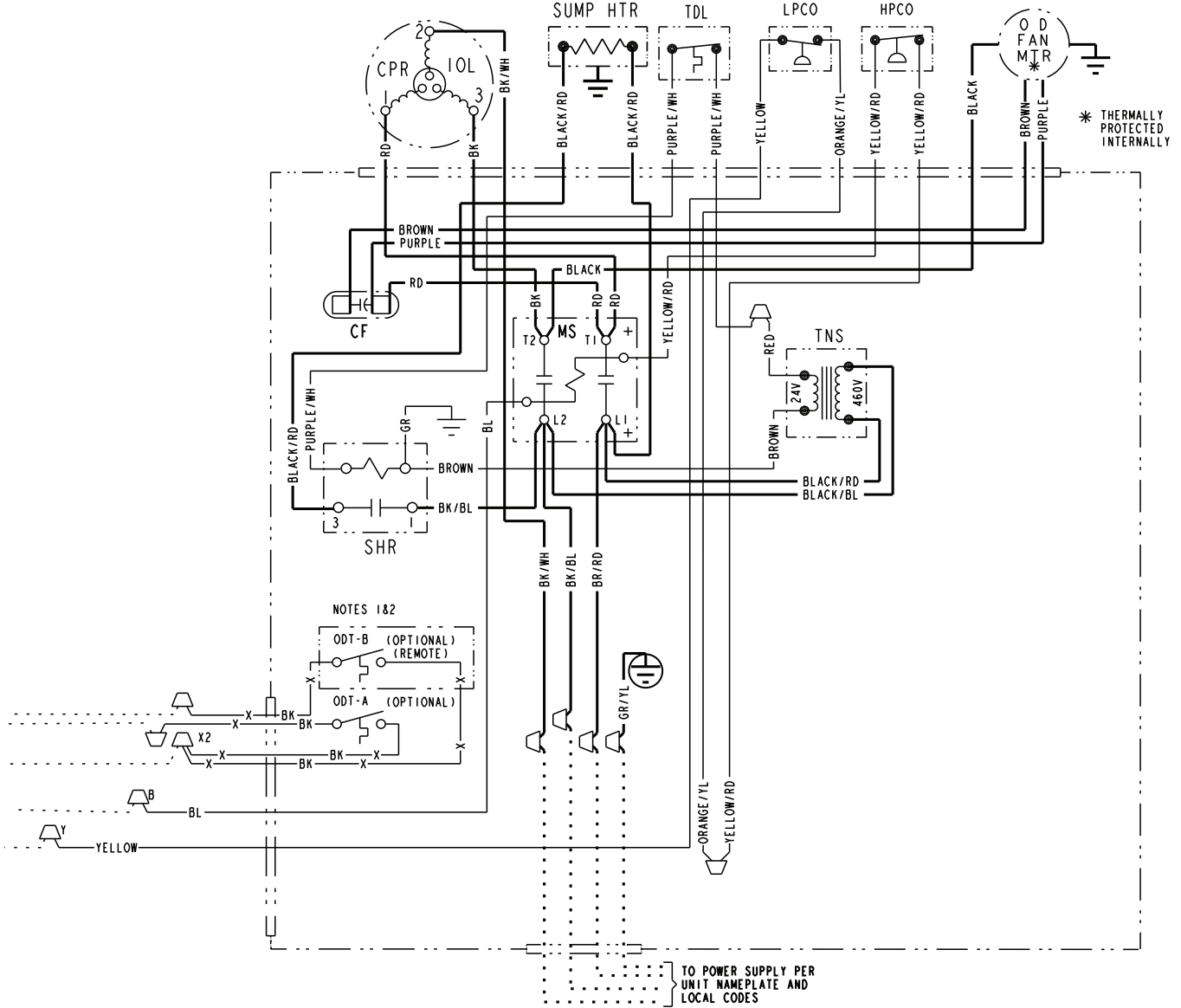
- IF ODT-B IS NOT USED, ADD JUMPER BETWEEN W2 & W3 AT AIR HANDLER. IF USED, ODT-B MUST BE MOUNTED REMOTE OF CONTROL BOX IN AN APPROVED WEATHER PROOF ENCLOSURE.
- IF ODT-A IS NOT USED, ADD JUMPER BETWEEN W1 & W2 AT AIR HANDLER.
- LOW VOLTAGE (24 V.) FIELD WIRING MUST BE 18 AWG MIN.

FOR CANADIAN INSTALLATIONS
POUR INSTALLATIONS CANADIENNES

CAUTION: NOT SUITABLE FOR USE ON SYSTEMS EXCEEDING 150V - TO - GROUND
ATTENTION: NE CONVIENT PAS AUX INSTALLATIONS DE PLLS DE 150 V A LA TERRE

Figure 4. Schematic: 3.0, 4.0 and 5.0 Ton Models

460V - D157075P05





Mechanical Specification Options

General

The outdoor condensing units are factory charged with the system charge required for the outdoor condensing unit, ten (10) feet of tested connecting line, and the smallest rated indoor evaporative coil match. This unit is designed to operate at outdoor ambient temperatures as high as 115°F. Cooling capacities are matched with a wide selection of air handlers and furnace coils that are AHRI certified. The unit is certified to UL 1995. Exterior is designed for outdoor application.

Casing

Unit casing is constructed of heavy gauge, galvanized steel and painted with a weather-resistant powder paint finish. The corner panels are prepainted. All panels are subjected to our 1,000 hour salt spray test.

Refrigerant Controls

Refrigeration system controls include condenser fan, compressor contactor and low and high pressure switches. A factory supplied, field installed liquid line drier is standard.

Compressor

The compressor features internal over temperature and pressure protection. Other features include: Centrifugal oil pump and low vibration and noise.

Condenser Coil

The outdoor coil provides low airflow resistance and efficient heat transfer. The coil is protected on all four sides by louvered panels.

Low Ambient Cooling

As manufactured, this system has a cooling capacity to 55°F. The addition of an evaporator defrost control permits operation to 40°F. The addition of an evaporator defrost control with TXV permits low ambient cooling to 30°F.

The addition of the BAYLOAM107A low ambient kit permits ambient cooling to 20°F.

Thermostats—Cooling only and heat/cooling (manual and automatic change over). Sub-base to match thermostat and locking thermostat cover.



Trane - by Trane Technologies (NYSE: TT), a global innovator - creates comfortable, energy efficient indoor environments for commercial and residential applications. For more information, please visit trane.com or tranetechnologies.com.



The AHRI Certified mark indicates Trane U.S. Inc. participation in the AHRI Certification program. For verification of individual certified products, go to ahridirectory.org.

Trane has a policy of continuous data improvement and it reserves the right to change design and specifications without notice. We are committed to using environmentally conscious print practices.