

INSTALLER'S GUIDE

18-HH39D1-1A-EN

ALL phases of this installation must comply with NATIONAL, STATE AND LOCAL CODES

Model:
BAYLINK002

Liquid Pressure Transducer Kit

This kit is used to add liquid pressure and liquid temperature readings to existing Variable Speed Condensers

IMPORTANT — This Document is customer property and is to remain with this unit. Please return to service information pack upon completion of work.

1. Safety Considerations

IMPORTANT: Follow all Warnings and Cautions in the Condenser Installer's Guide.

⚠ WARNING

THE INFORMATION IN THIS GUIDE IS FOR USE BY INDIVIDUALS HAVING ADEQUATE ELECTRICAL AND MECHANICAL BACKGROUND. ANY ATTEMPTS, BY UNQUALIFIED PERSONS, AT PLUMBING, INSTALLING OR REPAIRING A HYDRONIC SYSTEM OR CENTRAL AIR CONDITIONING PRODUCT COULD RESULT IN PROPERTY DAMAGE, SEVERE PERSONAL INJURY OR DEATH. THE MANUFACTURER OR SELLER CANNOT BE RESPONSIBLE FOR THE INTERPRETATION OF THIS INFORMATION, NOR CAN IT ASSUME ANY LIABILITY IN CONNECTION WITH ITS USE.

⚠ WARNING

ELECTRICAL HAZARD!
DISCONNECT ALL ELECTRICAL POWER, INCLUDING REMOTE DISCONNECTS BEFORE INSTALLING OR SERVICING. FOLLOW PROPER LOCKOUT/TAGOUT PROCEDURES TO ENSURE THE POWER CAN NOT BE INADVERTENTLY ENERGIZED. FAILURE TO FOLLOW THIS WARNING COULD RESULT IN SERIOUS PERSONAL INJURY, DEATH, OR PROPERTY DAMAGE.

2. Inspection

1. Unpack all components of the kit.
2. Check carefully for any shipping damage. If any damage is found, this must be reported immediately and a claim made against the transportation company.
3. Check to be sure all components are in the package. Any missing components should be reported to your supplier at once and replaced with authorized components only.

3. General Information

This kit includes a liquid pressure transducer, liquid temperature sensor, fitting to connect transducer to system and harness to adapt to existing VSPD units.

NOTE: This is meant to show liquid pressure, liquid temperature and sub-cooling for diagnostic purpose. This will also be used for SmartCharge™ when converting to a link communicating system.

4. Kit Contents

Each kit will contain:

Item	Qty	Description
1	1	Liquid Pressure Transducer
2	1	Liquid Temperature Sensor
3	1	Brass Swivel T Fitting
4	1	18 Pin Wiring Harness
5	1	Installer's Guide

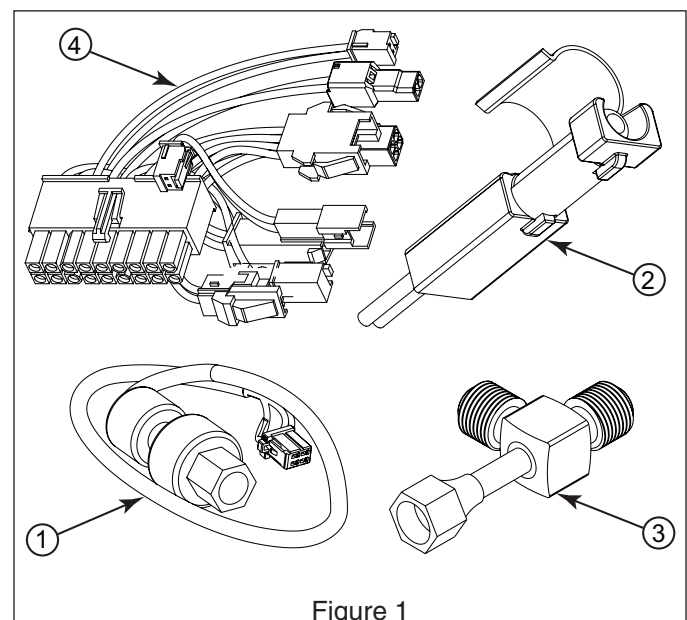


Figure 1

5. Transducer Kit Installation

1. Remove power from the Condenser.
2. Replace 18 pin harness from J1 on the IVSC.
3. Plug all existing sensors back onto the new harness.
4. Move valve core to proper location. See figure 2.
5. Screw liquid transducer onto swivel T. Use thread sealant or other method to ensure a leak free connection. Tighten as necessary. See figure 3.
6. Screw swivel T onto liquid service port. See figure 3.
7. Route transducer wiring into cabinet and route up to control box and connect to new 18 pin harness.
8. Snap-on the liquid temperature sensor onto the liquid line out of the control box cabinet. Ensure that the sensor wires are facing downwards.
9. Route the sensor wire along with the transducer wiring up to the control box and connect to new 18 pin harness.
10. Secure new wiring with wire ties to existing harness's.
11. Replace all panels and return unit to service.

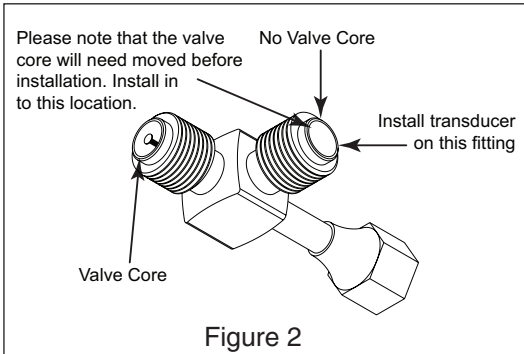
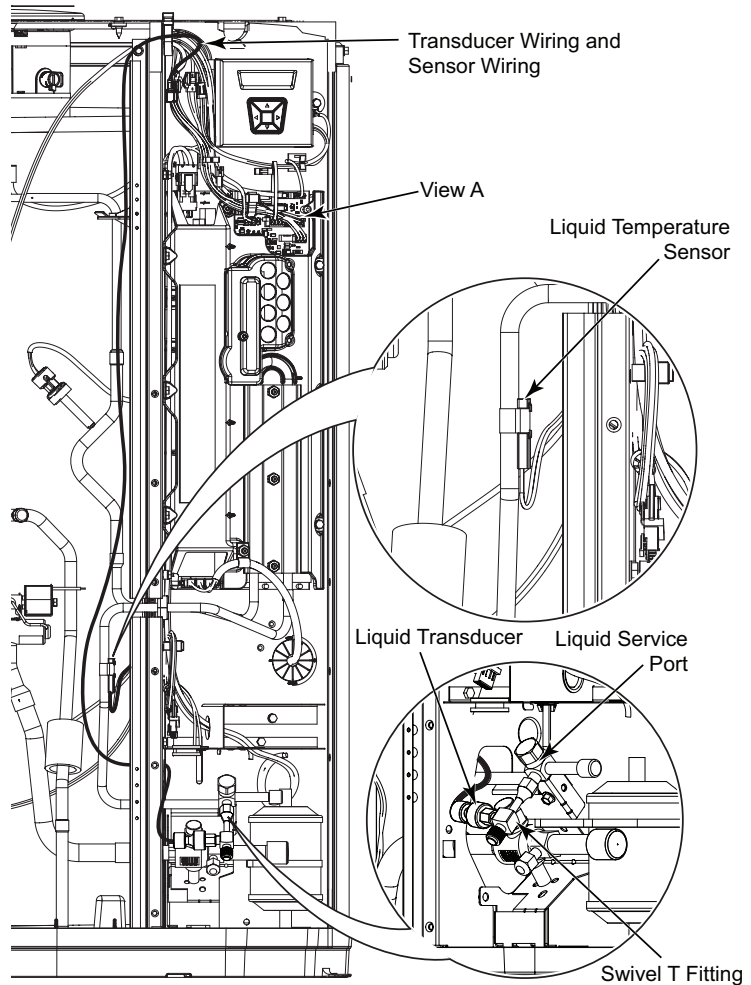
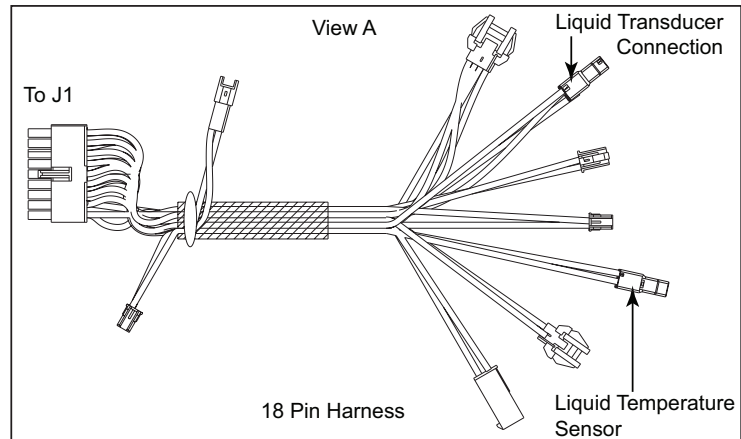


Figure 3

About Trane and American Standard Heating and Air Conditioning

Trane and American Standard create comfortable, energy efficient indoor environments for residential applications. For more information, please visit www.trane.com or www.americanstandardair.com

The manufacturer has a policy of continuous data improvement and it reserves the right to change design and specifications without notice. We are committed to using environmentally conscious print practices.