

# INSTALLER'S GUIDE

18-HH38D1-1A-EN

ALL phases of this installation must comply with NATIONAL, STATE AND LOCAL CODES

Model:  
BAYLINK001

## Comfortlink II/ AccuLink to Link Conversion Kit

This kit is used to convert a Variable Speed outdoor unit from  
Comfortlink II/ AccuLink to Link CAN bus communicating mode

**IMPORTANT** — This Document is customer property and is to remain with this unit. Please return to service information pack upon completion of work.

### 1. Safety Considerations

**IMPORTANT:** Follow all Warnings and Cautions in the air handler Installer's Guide.

#### **⚠ WARNING**

THE INFORMATION IN THIS GUIDE IS FOR USE BY INDIVIDUALS HAVING ADEQUATE ELECTRICAL AND MECHANICAL BACKGROUND. ANY ATTEMPTS, BY UNQUALIFIED PERSONS, AT PLUMBING, INSTALLING OR REPAIRING A HYDRONIC SYSTEM OR CENTRAL AIR CONDITIONING PRODUCT COULD RESULT IN PROPERTY DAMAGE, SEVERE PERSONAL INJURY OR DEATH. THE MANUFACTURER OR SELLER CANNOT BE RESPONSIBLE FOR THE INTERPRETATION OF THIS INFORMATION, NOR CAN IT ASSUME ANY LIABILITY IN CONNECTION WITH ITS USE.

#### **⚠ WARNING**

**ELECTRICAL HAZARD!**  
DISCONNECT ALL ELECTRICAL POWER, INCLUDING REMOTE DISCONNECTS BEFORE INSTALLING OR SERVICING. FOLLOW PROPER LOCKOUT/TAGOUT PROCEDURES TO ENSURE THE POWER CAN NOT BE INADVERTENTLY ENERGIZED. FAILURE TO FOLLOW THIS WARNING COULD RESULT IN SERIOUS PERSONAL INJURY, DEATH, OR PROPERTY DAMAGE.

### 2. Inspection

1. Unpack all components of the kit.
2. Check carefully for any shipping damage. If any damage is found, this must be reported immediately and a claim made against the transportation company.
3. Check to be sure all components are in the package. Any missing components should be reported to your supplier at once and replaced with authorized components only.

### 3. General Information

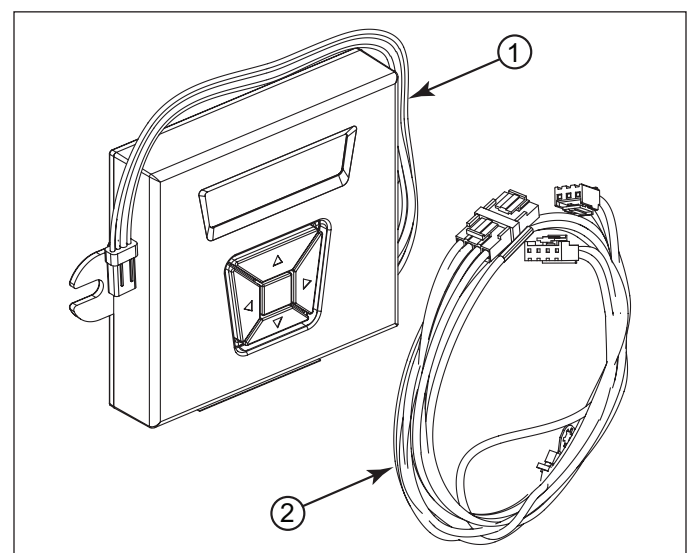
This kit includes a CAN bus communicating display (CDA) and a low voltage harness. This kit is used on TRANE or American Standard 18 or 20 SEER Variable Speed condensers.

**NOTE:** This kit will only be necessary when the indoor unit is Link communicating.

### 4. Kit Contents

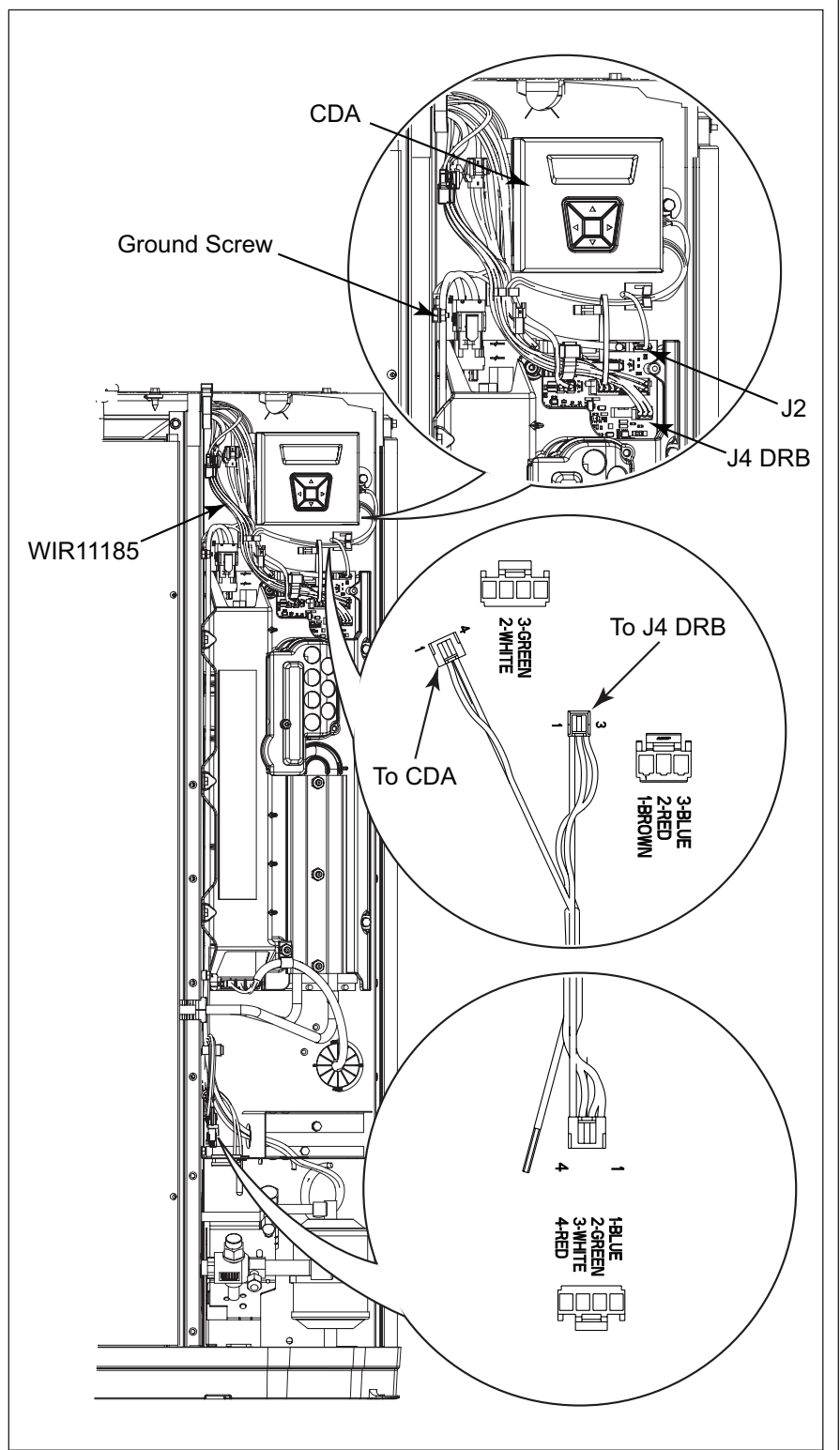
Each kit will contain:

Item	Qty	Description
1	1	CAN bus communicating display CDA (CNT07977)
2	1	Low voltage wiring harness (WIR11185)
3	1	Installer's Guide
4	1	Link label



## 5. Conversion Kit Installation

1. Remove power from the air handler.
2. Disconnect wire nut connection where the homes thermostat wires connect to unit.
3. Disconnect low voltage harness from J4 DRB connection on Variable Speed Drive.
4. Cut several small zip ties that attach the low voltage harness to the unit.
5. Carefully remove the low voltage harness from the unit and remove a ground screw that secures it to the control box.
6. Disconnect the harness from the J2 CDA header on the drive and remove the existing communicating display assembly (CDA) from the unit.
7. Install the new low voltage wire harness to the unit and secure using zip ties. Replace the ground screw. Make sure that the routing of the new harness is same as the original harness that was removed earlier.
8. Install the new communicating display assembly (CDA) to the unit.
9. Plug the white and green harness into the new CDA assembly.
10. Plug the brown, blue and red harness into the J4 DRB header on the drive.
11. Connect the RS-485 harness from the new CDA assembly to the J2 CDA header on the drive.
12. Make low voltage thermostat connections.



### About Trane and American Standard Heating and Air Conditioning

Trane and American Standard create comfortable, energy efficient indoor environments for residential applications. For more information, please visit [www.trane.com](http://www.trane.com) or [www.americanstandardair.com](http://www.americanstandardair.com)

The manufacturer has a policy of continuous data improvement and it reserves the right to change design and specifications without notice. We are committed to using environmentally conscious print practices.