

# INSTALLER'S GUIDE

18-HE131D1-1A-EN

ALL phases of this installation must comply with NATIONAL, STATE AND LOCAL CODES

## Piping Instructions for Packaged Unit Compressor Replacements:

Use with KIT number:

KIT18830

### Recip to Scroll Compressor change

**IMPORTANT** – This Document is customer property and is to remain with this unit. Please return to service information pack upon completion of work.

**⚠ WARNING: HAZARDOUS VOLTAGE – DISCONNECT POWER and DISCHARGE CAPACITORS BEFORE SERVICING**

### Section 1. Safety Information

**IMPORTANT:** Read this entire manual before beginning installation procedures.

Read this manual carefully before attempting to install, operate, or perform maintenance on this unit. Installation and maintenance should be performed by qualified service technicians only.

**NOTE:** "Warnings" and "Cautions" appear at appropriate places in this manual. Your personal safety and the proper operation of this air conditioning product require that you follow them carefully. The manufacturer assumes no liability for installations or servicing performed by unqualified personnel.

#### NOTICE

WARNING AND CAUTIONS APPEAR AT APPROPRIATE LOCATIONS THROUGHOUT THIS GUIDE. READ THESE CAREFULLY.

**⚠ WARNING:** INDICATES A POTENTIALLY HAZARDOUS SITUATION WHICH, IF NOT AVOIDED, COULD RESULT IN DEATH OR SERIOUS INJURY.

**⚠ CAUTION:** Indicates a potentially hazardous situation which, if not avoided, may result in minor or moderate injury. It may also be used to alert against unsafe practices and where property-damage-only accidents could occur.

#### ⚠ WARNING

**WARNING!**  
This product can expose you to chemicals including lead, which are known to the State of California to cause cancer and birth defects or other reproductive harm. For more information go to [www.P65Warnings.ca.gov](http://www.P65Warnings.ca.gov)

#### ⚠ WARNING

##### SAFETY HAZARD!

This information is for use by individuals having adequate backgrounds of electrical and mechanical experience. Any attempt to repair a central air conditioning product may result in personal injury and/or property damage. The manufacturer or seller cannot be responsible for the interpretation of this information, nor can it assume any liability in connection with its use.

#### ⚠ WARNING

##### SAFETY HAZARD!

Bodily injury can result from high voltage electrical components, fast moving fans, and combustible gas. For protection from these inherent hazards during installation and service, the electrical supply must be disconnected and the main gas valve must be turned off. If operating checks must be performed with the unit operating, it is the technicians responsibility to recognize these hazards and proceed safely.

#### ⚠ WARNING

##### LIVE ELECTRICAL COMPONENTS!

During installation, testing, servicing, and troubleshooting of this product, it may be necessary to work with live electrical components. Failure to follow all electrical safety precautions when exposed to live electrical components could result in death or serious injury.

## ⚠ WARNING

These units use R-410A refrigerant which operates at 50 to 70% higher pressures than R-22. Use only R-410A approved service equipment. Refrigerant cylinders are painted a "Rose" color to indicate the type of refrigerant and may contain a "dip" tube to allow for charging of liquid refrigerant into the system. All R-410A systems use a POE oil that readily absorbs moisture from the atmosphere. To limit this "hygroscopic" action, the system should remain sealed whenever possible. If a system has been open to the atmosphere for more than 4 hours, the compressor oil must be replaced. Never break a vacuum with air and always change the driers when opening the system for component replacement. For specific handling concerns with R-410A and POE oil reference Retrofit Bulletins SS-APG006-EN and APP-APG011-EN.

## ⚠ CAUTION

**CONTAINS REFRIGERANT!**  
**SYSTEM CONTAINS OIL AND REFRIGERANT UNDER HIGH PRESSURE. RECOVER REFRIGERANT TO RELIEVE PRESSURE BEFORE OPENING SYSTEM. Failure to follow proper procedures can result in personal illness or injury or severe equipment damage.**

## ⚠ CAUTION

**RECONNECT ALL GROUNDING DEVICES.**  
**All parts of this product that are capable of conducting electrical current are grounded. If grounding wires, screws, straps, clips, nuts, or washers used to complete a path to ground are removed for service, they must be returned to their original position and properly fastened.**

## ⚠ CAUTION

**Unit contains R-410A Refrigerant!**  
**R-410A operating pressure exceeds the limit of R-22. Proper service equipment is required. Failure to use proper service tools may result in equipment damage or personal injury.**  
**SERVICE**  
**Use only R-410A Refrigerant and approved POE compressor oil.**

## ⚠ CAUTION

**If using existing refrigerant lines make certain that all joints are brazed, not soldered.**

## ⚠ CAUTION

**Hot Surface!**  
**Do Not touch top of compressor. May cause minor to severe burning.**

**Important:** Make sure to follow all safety precautions in the unit Installer's Guide.

**Important:** Make certain that the unit has been installed in a level position to ensure proper draining.

**IMPORTANT:** Proper refrigerant charge and proper air flow are critical to achieve rated capacity and efficiency. Installation of this product should follow the manufacturer's refrigerant charging and air flow instructions. **Failure to confirm proper charge and airflow may reduce energy efficiency and shorten equipment life.**

**IMPORTANT:** Reconnect all grounding devices. All parts of this product capable of conducting electrical current are grounded. If grounding wires, screws, straps, clips, nuts, or washers used to complete a path to ground are removed for service, they must be returned to their original position and properly fastened.

**IMPORTANT:** Wear appropriate gloves, arm sleeve protectors, and eye protection when servicing or maintaining this equipment.

## Section 2. Installation

**STEP 1** - Recover refrigerant, disconnect power leads and remove mounting washers/nuts and set aside from the existing compressor. Also disconnect LPCO wires from the wire termination point. If a start kit is installed, remove it.

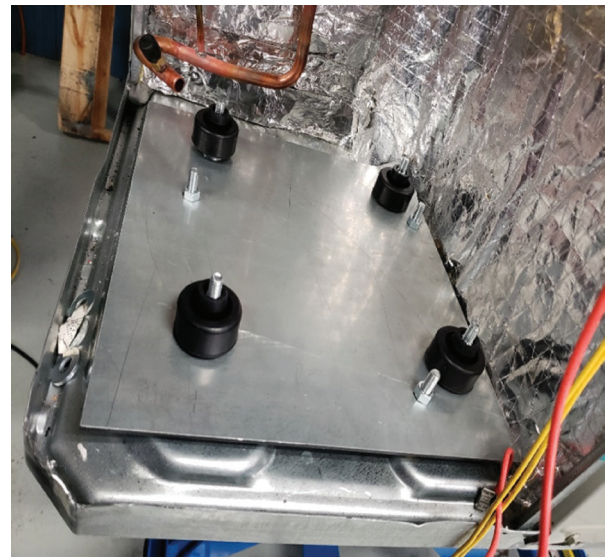
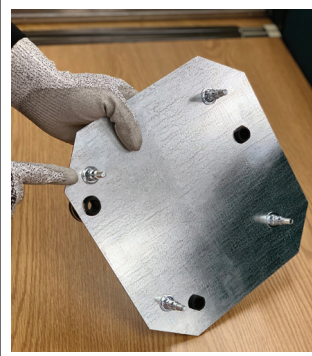
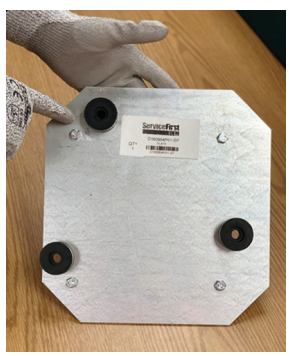


**STEP 2** - Remove the compressor from the unit.



**STEP 3** - Prior to setting base plate, install pallet nuts, bolts and recip bushings onto the base plate. Secure base plate into compressor compartment.

**Note:** Corners on provided base plate are cut.



**STEP 4** - After securing the compressor to the mounting plate using new grommets and screws, slide the crankcase heater around the compressor, tighten the mounting screw and secure the wires out of the area that you will be brazing.

**Note:** Crankcase heater is for heat pump only.



**STEP 5** - Set the new compressor, tighten the mounting nuts and use the Trane-supplied tubing connectors to dry-fit the pipes before brazing. Replace liquid line drier in the outdoor coil section of the unit.



**STEP 6** - Braze, leak check with nitrogen, vacuum and recharge per data plate.



**STEP 7** - Install new compressor power lead, LPCO wires, connect crankcase heater wires and secure any other wires that were moved during the compressor replacement. Replace run capacitor if required in parts notes.

**Note:** After and prior to start-up of the new compressor, ensure that all piping and wiring are not in contact with the access panels when reinstalled.

**Note:** If discharge line vibration is an issue, order part numbers CMP01450 & BAR00178 (clamp and bar)

**Note:** If powered reverse rotation is a problem on single-phase units, order part number RLY03032 (time delay relay).

