

Installation Guide

MERV 11 QuikBox Models

- EQBFM175A1FR11
- EQBFM17DA1AH11
- EQBFM185A1AH11
- EQBFM210A1FR11
- EQBFM215A1AH11
- EQBFM235A1AH11
- EQBFM245A1FR11

MERV 11 QuikBox Replacement Filters

- FLRQB5FR17M11
- FLRQB5DN17M11
- FLRQB5AH18M11
- FLRQB5FR21M11
- FLRQB5AH21M11
- FLRQB5AH23M11
- FLRQB5FR24M11

MERV 13 QuikBox Models

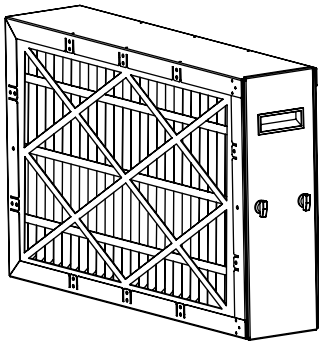
- EQBFM175A0FR13
- EQBFM17DA0AH13
- EQBFM185A0AH13
- EQBFM210A0FR13
- EQBFM215A0AH13
- EQBFM235A0AH13
- EQBFM245A0FR13

MERV 13 QuikBox Replacement Filters

- FLRQB5FR17M13
- FLRQB5DN17M13
- FLRQB5AH18M13
- FLRQB5FR21M13
- FLRQB5AH21M13
- FLRQB5AH23M13
- FLRQB5FR24M13

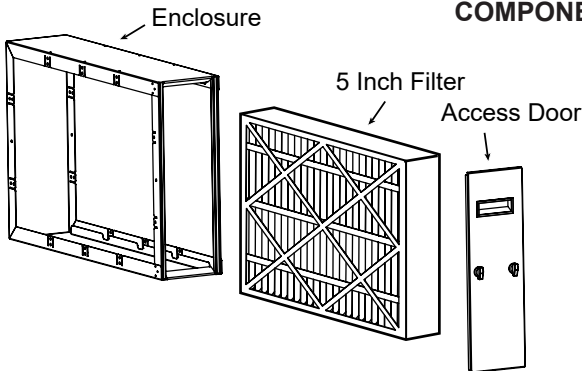
ALL phases of this installation must comply with NATIONAL, STATE AND LOCAL CODES

IMPORTANT — This Document is customer property and is to remain with this unit.
Please return to service information pack upon completion of work.



MAINTENANCE/REPLACEMENT SCHEDULE				
Conditions	Continuous Fan		Auto Fan	
	Dusty	Normal	Dusty	Normal
5 Inch Media	1-2 Months	3 Months	3 Months	6 Months

The Maintenance/Replacement Schedule is dependent on the amount of air passing through the filter as well as the amount of dust (pollen, smoke, etc.) in the air. This schedule shows estimated time periods and may be increased or decreased based on actual conditions.



COMPONENTS OF THE FILTER

Enclosure - 22 gauge painted steel with inside wrapped insulation. Mounts between the furnace/air handler and return air duct work and houses the 5 inch filter.

Filter - Collapsible Type 5 inch, electrostatically charged media. Rated MERV 11 or MERV 13 media according to ASHRAE 52.2 Dust Spot Efficiency Test.

Access Door - Fully insulated access door.

Figure 1. Filter Enclosure with 5” Media Filter

Installer's Guide

PRE-INSTALLATION

LOCATING THE FILTER ENCLOSURE

NOTE: Do not install the air filter in the discharge air stream of either the heating or cooling unit.

⚠ CAUTION

Do not install air cleaner where the filter can be exposed to UV light. UV light can cause the plastic material to deteriorate, which may lead to filter damage.

This filter enclosure must be mounted in the return air duct on the entering air side of a central forced-air furnace/air handler. (See Figure 2 for example.)

SELECT A LOCATION THAT MEETS THE FOLLOWING:

1. The face of the filter must be at a right angle to the air stream.
2. Allow a minimum of 28 inches clearance in front of the filter enclosure to permit removal of the filter.
3. Atomizing spray type humidifiers, when used, must be installed on the supply side (away from the filter).

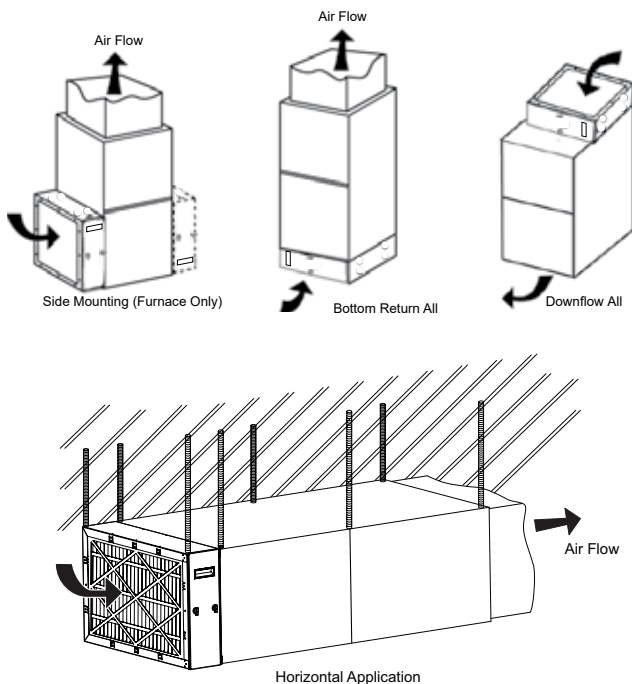


Figure 2. Mounting Location of Air Cleaner

NOTE: When the QuikBox is attached to a furnace in a horizontal hanging application, the return ductwork and QuikBox must also be supported so the QuikBox door can be properly removed and replaced when changing the filter.

DIRECTION OF AIR FLOW THROUGH THE FILTER ENCLOSURE

4. The filter enclosure is designed for single-direction air flow. Install the filter enclosure such that the arrow always points towards the furnace/air handler. (See Fig. 3)
5. The mounting flange on entering air side of the enclosure has the single row of holes for attaching ductwork.

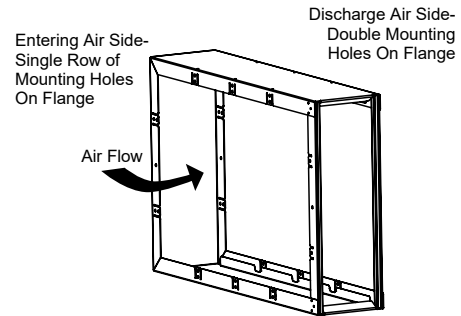


Figure 3. Air Flow Direction

6. On side return furnace applications, the filter may be installed on either side of the cabinet. See Figure 2. Install the self-adhesive gasket material onto the flange of the discharge-air side of the filter enclosure. Air flow direction must agree with air flow arrows on the cabinet.
7. It is recommended that sheet metal turning vanes be installed inside an elbow on ductwork attached to the entering airstream side of the filter enclosure. This improves the air distribution over the filter media.

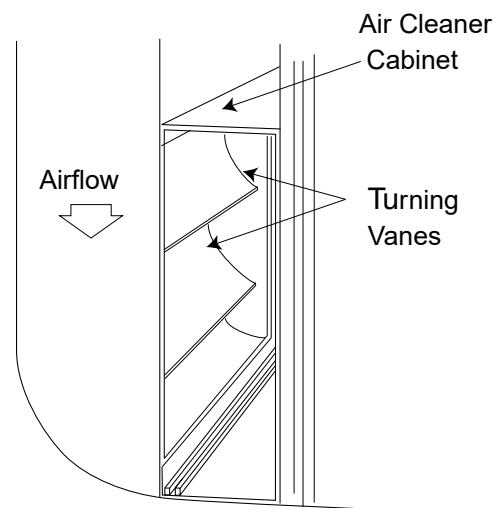


Figure 4. Turning Vanes

8. Use transition fittings where return air duct dimensions do not match the filter opening dimensions. Gradual transitions are preferred for greatest efficiency. Four inches per linear foot (approximately 20° angle) should be allowed, space permitting.
9. Seal all joints in the return air system to prevent dust from entering the air stream and coil corrosion.

BOTTOM MOUNT - Furnace or Air Handler

1. Rotate the two quarter turn latches on the access door to remove the access door from the enclosure and set it aside. Remove the filter and set aside until the enclosure is installed.
2. Position the furnace/air handler on a protective pad on the floor with the bottom of the furnace/air handler in the up position (see Fig. 5).

NOTE: This allows maximum downward force to be exerted on the power drill when installing the attaching screws.

3. Install the self-adhesive gasket material onto the flange of the discharge-air side of the filter enclosure.

IMPORTANT: The gasket material will provide a seal between the enclosure and the bottom of the unit. It should be placed toward the outside edge of the flange. The outer edge screw holes on the enclosure flange must be used to attach the filter enclosure.

4. Position the filter enclosure on the bottom of the unit with the gasket against the unit. Align the rear of the enclosure with the rear of the unit and the two sides of the enclosure with the sides of the unit. The front of the enclosure will NOT align flush with the front of the unit.
5. Check that the front of the filter enclosure is facing the front of the unit.
6. Securely attach the filter enclosure to the unit using the heavy-duty self-tapping sheet metal screws. Recommended screw spec: #12-14, 1/2" length (3/8" if only two metal thicknesses), hex washer head, slotted drive, Type AB.

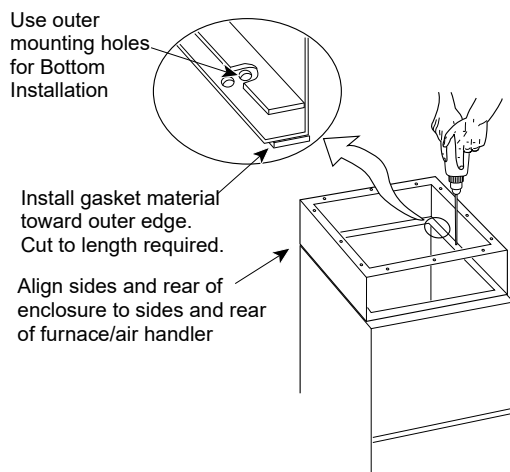


Figure 5. Bottom Installation Details

SIDE MOUNT - (Upflow model furnace only) (16.75" and 17.5" Filter Enclosure Height)

NOTE: The 21" and 24 1/2" Filter Enclosure Heights require a transition between the filter enclosure and the furnace.

NOTE: Do not install the filter enclosure on the side of an air handler.

1. Rotate the two quarter turn latches on the access door to remove the access door from the enclosure and set it aside. Remove the filter, and set aside until the enclosure is installed.
2. Lay the furnace on a protective pad on the floor with the surface on which the filter enclosure will be installed in the up position.

NOTE: This allows maximum downward force to be exerted on the power drill when installing the attaching screws.

3. Align the rear of the filter enclosure flush with the rear of the furnace. Align the bottom of the filter enclosure 1/4 inch above the bottom of the furnace. Mark the inside opening of the filter enclosure using the inside edge of the mounting flange as a guide. Move the enclosure and cut the opening.

NOTE: Opening size must align with side return filter application instructions as listed in the Furnace Installers Guide.

4. Install the self-adhesive gasket material onto the flange of the discharge-air side of the filter enclosure.

IMPORTANT: The gasket material provides a seal between the enclosure and the furnace. It should be placed toward the inside edge of the flange. The inner edge screw holes on the enclosure flange will be used to attach the filter enclosure to the furnace.

5. Position the filter, with the gasket against the furnace, over the furnace enclosure opening cut previously in step 3.
6. Check that the front of the filter is facing the front of the furnace.
7. Securely attach the filter to the furnace using the heavy-duty self-tapping sheet metal screws. Recommended screw spec: #12-14, 1/2" length (3/8" if only two metal thicknesses), hex washer head, slotted drive, Type AB.
8. Seal all joints in the return air system to prevent dust from entering the airstream.

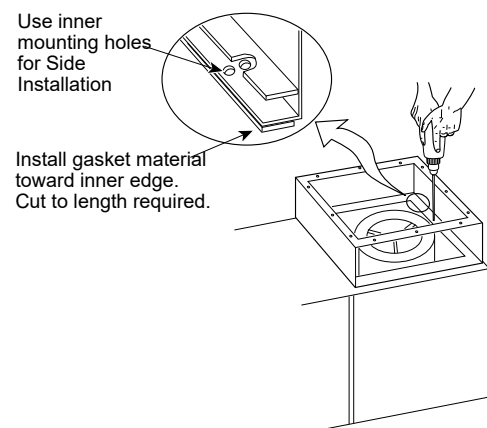


Figure 6. Side Installation Details

Installer's Guide

PRESSURE DROP

MERV 11 QuikBox Models								
Model Number:		EQBFM175A1FR11	EQBFM17DA1AH11	EQBFM185A1AH11	EQBFM210A1FR11	EQBFM215A1AH11	EQBFM235A1AH11	EQBFM245A1FR11
Cabinet Size:		6"x17.5"x27"	6"x17.5"x21"	6"x18.5"x21"	6"x21"x27"	6"x21.5"x21"	6"x23.5"x21"	6"x24.5"x27"
Capacity	CFM	*Pressure Drop						
Variable Low	350	0.03	0.03	0.03	0.02	0.02	0.02	0.02
Variable Low	650	0.07	0.10	0.08	0.04	0.06	0.05	0.04
2 Tons	800	0.10	0.14	0.11	0.06	0.08	0.07	0.05
2.5 Tons	1000	0.14	0.20	0.16	0.08	0.12	0.10	0.07
3 Tons	1200	0.19	0.27	0.21	0.11	0.17	0.14	0.09
3.5 Tons	1400	0.25	0.35	0.28	0.15	0.22	0.18	0.11
4 Tons	1600	0.32	NR	NR	0.19	0.28	0.23	0.14
5 Tons	1800	NR	NR	NR	0.23	0.35	0.28	0.17

MERV 13 QuikBox Models								
Model Number:		EQBFM175A0FR13	EQBFM17DA0AH13	EQBFM185A0AH13	EQBFM210A0FR13	EQBFM215A0AH13	EQBFM235A0AH13	EQBFM245A0FR13
Cabinet Size:		6"x17.5"x27"	6"x17.5"x21"	6"x18.5"x21"	6"x21"x27"	6"x21.5"x21"	6"x23.5"x21"	6"x24.5"x27"
Capacity	CFM	*Pressure Drop						
Variable Low	350	0.04	0.05	0.05	0.03	0.04	0.04	0.03
Variable Low	650	0.09	0.13	0.12	0.06	0.10	0.08	0.05
2 Tons	800	0.12	0.18	0.17	0.08	0.13	0.11	0.07
2.5 Tons	1000	0.17	0.27	0.24	0.11	0.18	0.15	0.10
3 Tons	1200	0.22	NR	0.32	0.14	0.24	0.19	0.12
3.5 Tons	1400	0.28	NR	NR	0.18	0.31	0.25	0.15
4 Tons	1600	0.34	NR	NR	0.21	NR	0.30	0.19
5 Tons	1800	NR	NR	NR	0.25	NR	NR	0.23

Application recommended with ECM motors.

NR - Application not recommended. Use larger cabinet w/ duct transition.

* Do not exceed total system pressure drop for equipment

REPLACEMENT FILTERS

MERV 11 QuikBox Models	Replacement Filter Models	Replacement Filter Size (in.)
EQBFM175A1FR11	FLRQB5FR17M11	16.7 x 26 x 4.7
EQBFM17DA1AH11	FLRQB5DN17M11	16.7 x 20 x 4.7
EQBFM185A1AH11	FLRQB5AH18M11	17.7 x 20 x 4.7
EQBFM210A1FR11	FLRQB5FR21M11	20.2 x 26 x 4.7
EQBFM215A1AH11	FLRQB5AH21M11	20.7 x 20 x 4.7
EQBFM235A1AH11	FLRQB5AH23M11	22.7 x 20 x 4.7
EQBFM245A1FR11	FLRQB5FR24M11	23.7 x 26 x 4.7

MERV 13 QuikBox Models	Replacement Filter Models	Replacement Filter Size (in.)
EQBFM175A0FR13	FLRQB5FR17M13	16.7 x 26 x 4.7
EQBFM17DA0AH13	FLRQB5DN17M13	16.7 x 20 x 4.7
EQBFM185A0AH13	FLRQB5AH18M13	17.7 x 20 x 4.7
EQBFM210A0FR13	FLRQB5FR21M13	20.2 x 26 x 4.7
EQBFM215A0AH13	FLRQB5AH21M13	20.7 x 20 x 4.7
EQBFM235A0AH13	FLRQB5AH23M13	22.7 x 20 x 4.7
EQBFM245A0FR13	FLRQB5FR24M13	23.7 x 26 x 4.7

About Trane and American Standard Heating and Air Conditioning

Trane and American Standard create comfortable, energy efficient indoor environments for residential applications. For more information, please visit www.trane.com or www.americanstandardair.com

The manufacturer has a policy of continuous data improvement and it reserves the right to change design and specifications without notice. We are committed to using environmentally conscious print practices.