

INSTALLER'S GUIDE

18-HB60D12-1E-EN

ALL phases of this installation must comply with NATIONAL, STATE AND LOCAL CODES.

See Unit Rating nameplate for max output temperature and static pressure range. Installer must check off Heater Installed nameplate on unit per instructions on nameplate.

Models:
BAYHTRC106B--
BAYHTRC117B

Used With:
*WHC4024-042
M4PW4024-042

**SUPPLEMENTARY
ELECTRIC HEATERS
for OVER / UNDER UNITS**

⚠ WARNING: HAZARDOUS VOLTAGE – DISCONNECT POWER BEFORE SERVICING

ELECTRIC HEATER DATA

UNIT MODEL	ELECTRIC HEATER MODEL	RATED VOLT-AGE	PHASE	HEATER CAPACITY		NO. OF STAGES	KW/STAGE		MCA (2)	MAX. FUSE OR HQCR CKT BKR SIZE (4)	CAN-ADA ONLY MAX. CKT BKR SIZE (5)
				KW	BTUH		1	2			
*WHC*024*1000** M4PW4024A1000**	BAYHTRC106B	208/240	1	4.33/5.76	14800/19600	1	4.33/5.76	---	26/30(3)	30/30	30/30
	BAYHTRC111B	208/240	1	7.93/10.56	27000/36000	1	7.93/10.56	---	48/55(3)	50/60	50/60
*WHC*030*1000** M4PW4030A1000**	BAYHTRC106B	208/240	1	4.33/5.76	14800/19600	1	4.33/5.76	---	26/30(3)	30/30	30/30
	BAYHTRC111B	208/240	1	7.93/10.56	27000/36000	1	7.93/10.56	---	48/55(3)	50/60	50/60
	BAYHTRC117B	208/240	1	12.98/17.28	44300/59000	1	12.98/17.28	---	78/90(3)	80/90	100/100
*WHC*036*1000** M4PW4036A1000**	BAYHTRC106B	208/240	1	4.33/5.76	14800/19600	1	4.33/5.76	---	26/30(3)	30/30	30/30
	BAYHTRC109B	208/240	1	6.12/8.16	20900/27800	1	6.12/8.16	---	37/43(3)	40/45	40/50
	BAYHTRC111B	208/240	1	7.93/10.56	27000/36000	1	7.93/10.56	---	48/55(3)	50/60	50/60
	BAYHTRC117B	208/240	1	12.98/17.28	44300/59000	1	12.98/17.28	---	78/90(3)	80/90	100/100
*WHC*042*1000** M4PW4042A1000**	BAYHTRC106B	208/240	1	4.33/5.76	14800/19600	1	4.33/5.76	---	26/30(3)	30/30	30/30
	BAYHTRC109B	208/240	1	6.12/8.16	20900/27800	1	6.12/8.16	---	37/43(3)	40/45	40/50
	BAYHTRC111B	208/240	1	7.93/10.56	27000/36000	1	7.93/10.56	---	48/55(3)	50/60	50/60
	BAYHTRC117B	208/240	1	12.98/17.28	44300/59000	1	12.98/17.28	---	78/90(3)	80/90	100/100

NOTES:

- Any power supply and circuits must be wired and protected in accordance with local electrical codes.
- The MCA values listed are for electric heater only.
- Field wire must be rated at least 75°C.
- The HACR circuit breaker is for U.S.A. installations only.
- For Canada installation reference only.
- * indicates an alpha character.

INSTALLER'S GUIDE

SINGLE PACKAGED UNIT INSTRUCTIONS

These instructions are for the installation of supplementary heaters in single packaged units described in the table on the front page.

These instructions do not purport to cover all variations in system hookups nor to provide for every possible contingency to be met in connection with installation. Should further information be desired or should particular problems arise which are not covered sufficiently for the purchaser's purposes, the matter should be referred to the manufacturer.

1. Check for any shipping damage, and if any, report it to the carrier immediately.
2. Check the heater nameplate and compare with the table on the front page - make certain that the available power supply complies with the table for the particular heater being used.

INSTALLATION OF HEATERS (EXCEPT C117B)

1. Remove heater control box cover, save the two (2) cover screws for reinstalling the cover later. See Figure 1.
2. Remove the unit's top access panel.
3. Remove the appropriate high voltage entrance knockout on the side panel of the unit. See Figure 2.
4. Slide the heater assembly into the cavity between the blower scroll and the discharge air duct flanges. See Figure 2.
5. Align the two (2) holes in the top flange of the control box with the two (2) holes in the top flange of the baffle plate. Secure with two (2) screws provided with the heater. See Figure 2.
6. Connect the heater's high voltage leads to the field supplied leads as follows.
 - a. Route the field high voltage leads through the high voltage entrance knockout on unit side panel.
 - b. Wire leads together in accordance with National and Local Codes using good wiring practices and procedures, see Field Wiring Connections on the heater wiring diagram.
7. Depress the wires into the field junction cavity.
8. Connect the unit's low voltage leads and the heater's low voltage leads together via the polarized plug. Depress the connected polarized plug into the field junction cavity.
9. Replace the heater control box cover with the two (2) previously removed screws.
10. Replace the unit's top access panel.
11. Mark the heater installed nameplate per instructions on the nameplate. (Heater nameplate is located on the side panel of the unit.)

INSTALLATION OF BAYHTRC117B HEATER WITH FUSE BOX

1. Remove heater control box cover, save the two (2) cover screws for reinstalling the cover later. See Figure 1.
2. Remove the unit's top access panel.
3. On the backside of the fuse box remove the sealing locknut from the chase nipple.
4. Remove the appropriate larger (1-3/8") high voltage entrance knockout on the side panel of the unit. See Figure 3. Remove unit insulation from the knockout opening.
5. Mount the fuse box on the side of the unit as shown in Figure 3. Place the chase nipple with the washer through the knockout on the unit and tighten sealing locknut firmly on the chase nipple.

NOTE: Sealing side of the locknut must be against the unit's side panel.

6. Secure fuse box to the unit with the factory supplied screw. See Figure 3.
7. Slide the heater assembly into the cavity between the blower scroll and the discharge duct flange. See Figure 3.
8. Align the two (2) holes in the top flange of the control box with the two (2) holes in the top flange of the baffle plate. Secure with two (2) screws provided with the heater. See Figure 2.
9. Route the heater's high voltage leads and ground wire through the chase nipple in the back of the fuse box. See Figure 4.
10. Connect the heater's high voltage leads to the fuse block and ground wire to ground lug as shown in Figure 4 and also shown on the heater's wiring diagram located on the back of the control box cover.
11. Route the field high voltage leads into the fuse box through the knockout on the fuse box.
12. Connect the field high voltage leads to the fuse block and the ground wire to the ground lug as shown on the heater wiring diagram. See figure 4.
13. Connect the unit's low voltage leads and the heater's low voltage leads together via the polarized plug. Depress the connected polarized plug into the field junction cavity.
14. Replace the heater control box cover with the two (2) screws removed in step 1.
15. Replace the unit's top access panel removed in step 2.
16. Mark the heater installed nameplate per instructions on the nameplate. (Heater nameplate is located on the side panel of the unit.)

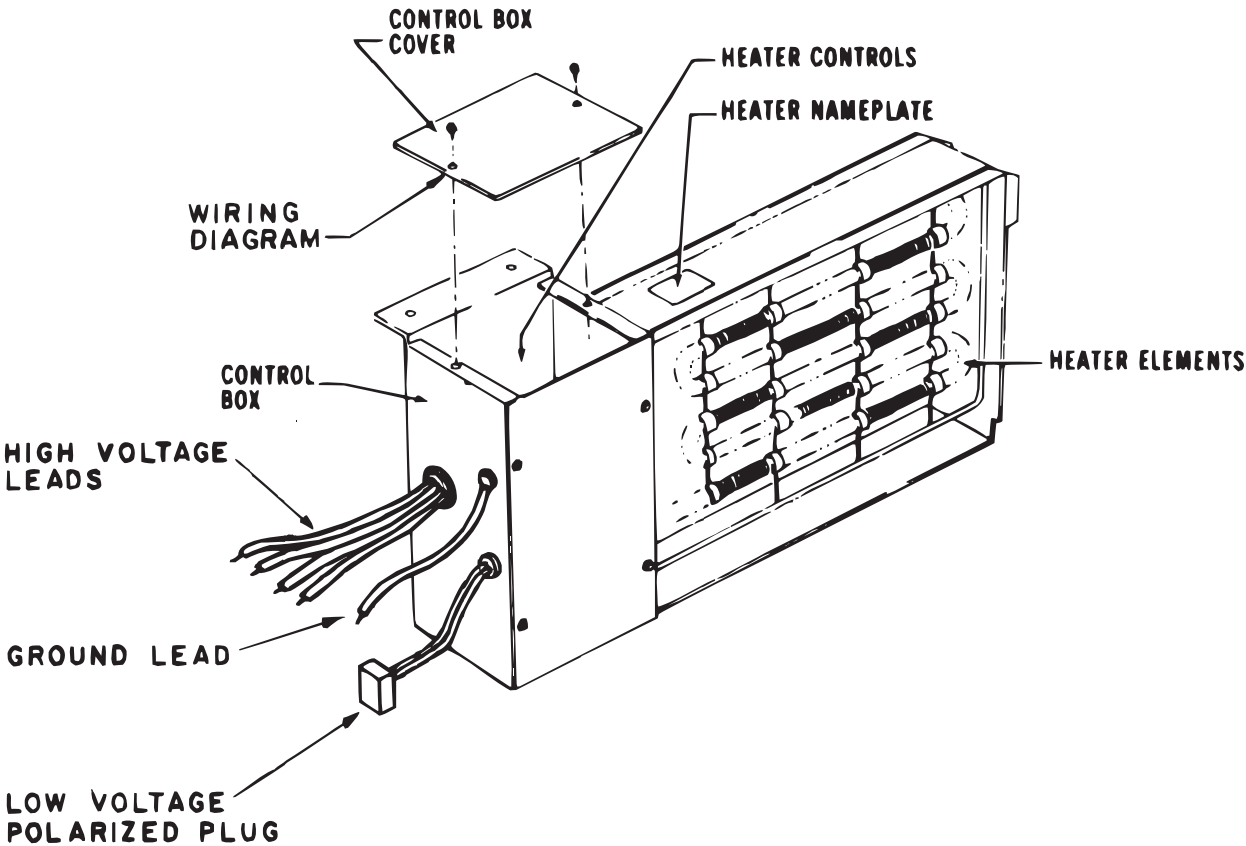


Figure 1. Typical Single Element Heater

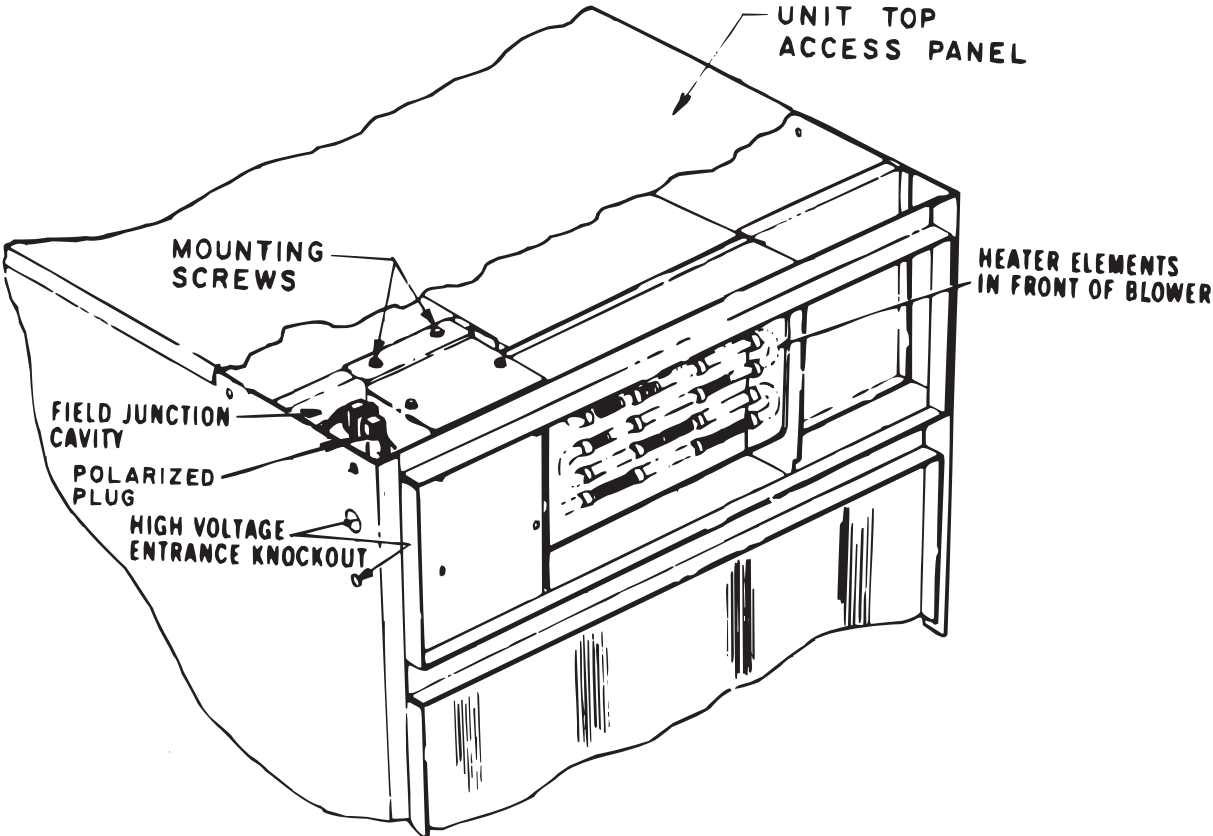


Figure 2. Typical Single Element Heater Installation

INSTALLER'S GUIDE

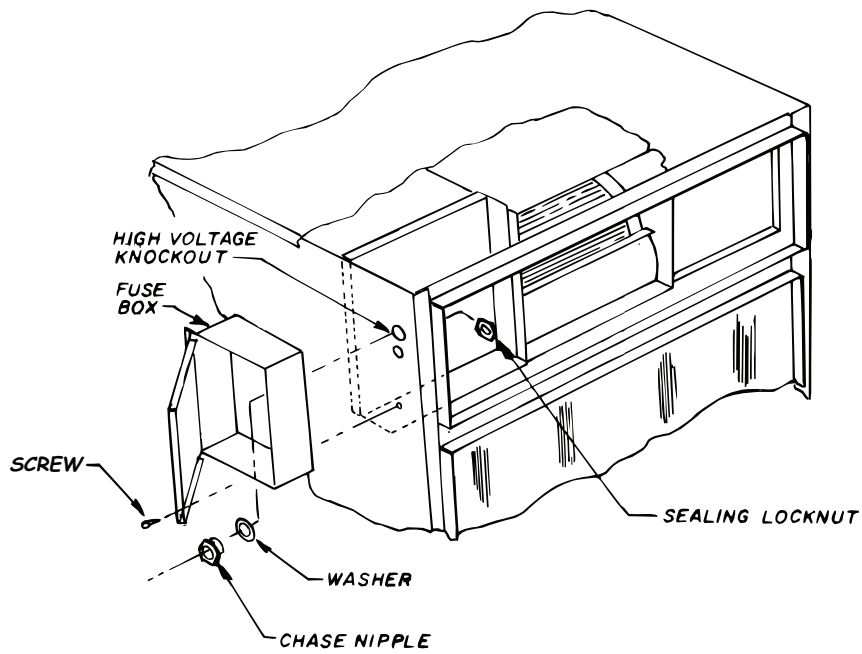


Figure 3. Typical Dual Element Heater

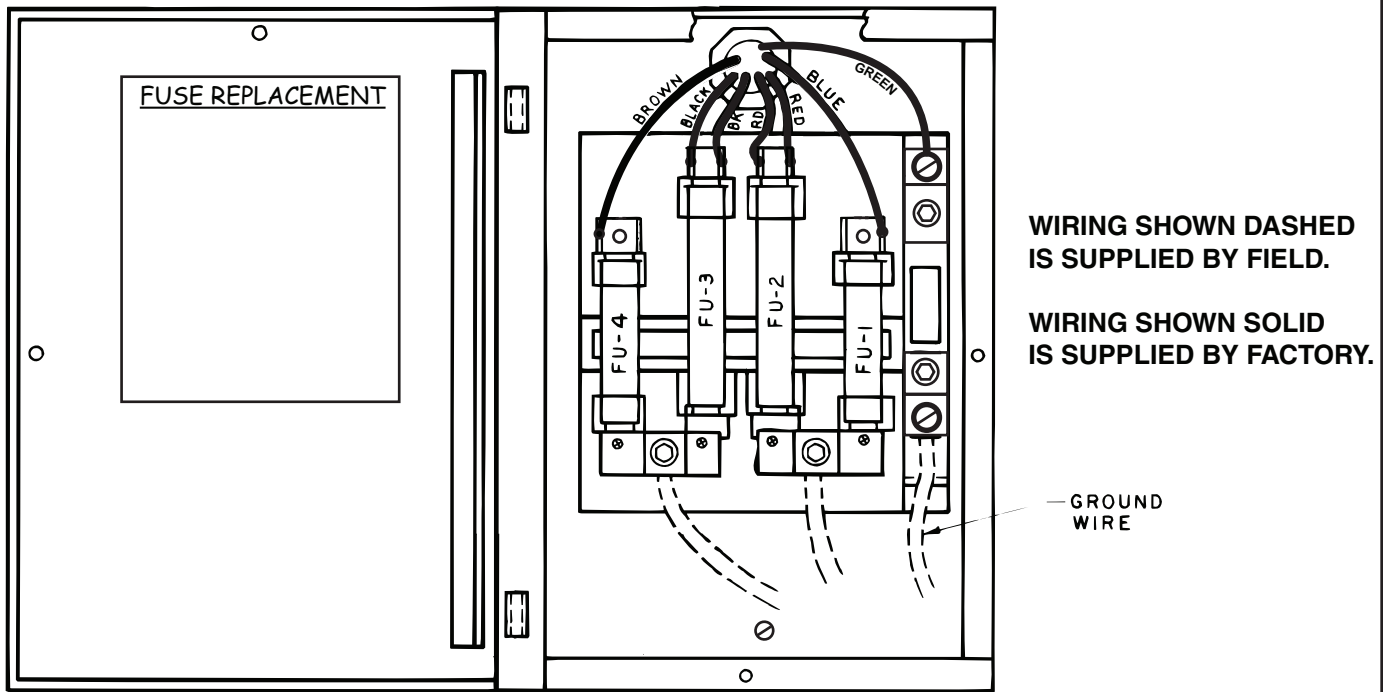


Figure 4. Dual Element Heater Fuse Box BAYHTRC117B

About Trane and American Standard Heating and Air Conditioning

Trane and American Standard create comfortable, energy efficient indoor environments for residential applications. For more information, please visit www.trane.com or www.americanstandardair.com

The manufacturer has a policy of continuous data improvement and it reserves the right to change design and specifications without notice. We are committed to using environmentally conscious print practices.