

TRANE

THIS DRAWING IS PROPRIETARY AND SHALL NOT BE COPIED OR ITS CONTENTS DISCLOSED TO OUTSIDE PARTIES WITHOUT THE CONSENT OF TRANE.

DRAWN BY:  
D.CONDIE

TRANE© DATE:  
01/17/2019

REPLACES:  
4367-0385

REVISION DATE:  
04-SEP-19

CAD SYSTEM USED:  
Pro/DIAGRAM

SIMILAR TO:  
--

FILE NUMBER:

DRAWING NUMBER:

43675777

SHEET:

1 OF 1

REV

C

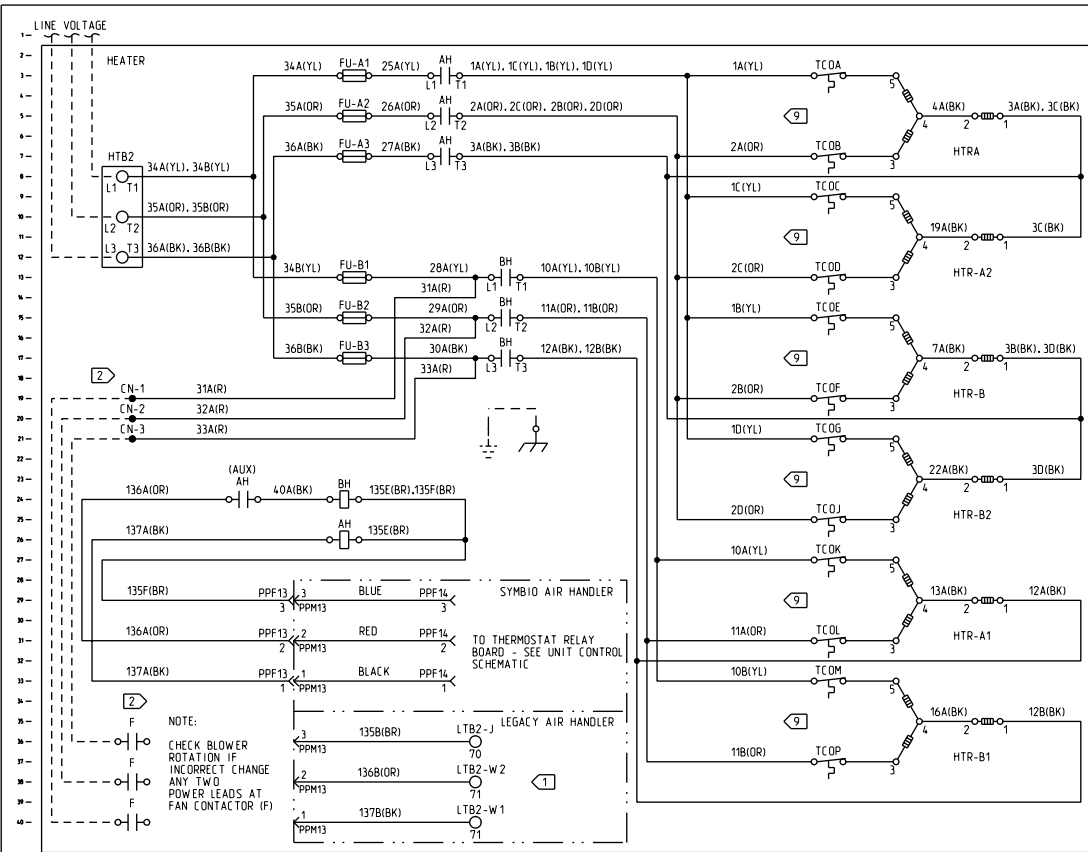
ODYSSEY

DIAGRAM

SCHEMATIC/CONNECTION

49.84KW ELECTRIC HEAT

460/575V 3PH



LEGEND		
DEVICE DESIG	DESCRIPTION	LINE NUMBER
AH	CONTACTOR - HEATER	3,5,7,24,26
BH	CONTACTOR - HEATER	13,15,17,26
CN-1	CONNECTOR - WIRE NUT #1	19
CN-2	CONNECTOR - WIRE NUT #2	20
CN-3	CONNECTOR - WIRE NUT #3	21
F	CONTACTOR - INDOOR FAN	36,38,40
FU-A1	FUSE	3
FU-A2	FUSE	5
FU-A3	FUSE	7
FU-B1	FUSE	13
FU-B2	FUSE	15
FU-B3	FUSE	17
HTB2	HIGH VOLTAGE TERMINAL BLOCK	8
HTR-A1	HEATER RACK	3
HTR-A2	HEATER RACK	9
HTR-B	HEATER RACK	15
HTR-B1	HEATER RACK	21
HTR-B2	HEATER RACK	27
HTRA	HEATER RACK	33
LTB2	TERMINAL BLOCK - LOW VOLTAGE	36,38,40
TCOA	SWITCH - TEMP LIMIT	3
TCOB	SWITCH - TEMP LIMIT	7
TCOC	SWITCH - TEMP LIMIT	9
TCOD	SWITCH - TEMP LIMIT	13
TCOE	SWITCH - TEMP LIMIT	15
TCOF	SWITCH - TEMP LIMIT	19
TCOG	SWITCH - TEMP LIMIT	21
TCOJ	SWITCH - TEMP LIMIT	25
TCOK	SWITCH - TEMP LIMIT	27
TCOL	SWITCH - TEMP LIMIT	31
TCOM	SWITCH - TEMP LIMIT	33
TCOP	SWITCH - TEMP LIMIT	37

ELECTRICAL RATING		
VOLTS	KW	AMPS
480	49.84	60
600	49.84	50

WIRE COLORS	
ABBR	COLOR
BK	BLACK
BR	BROWN
R	RED
YL	YELLOW
OR	ORANGE

CAUTION

USE COPPER CONDUCTORS ONLY!

UNIT TERMINALS ARE NOT DESIGNED TO ACCEPT OTHER TYPES OF CONDUCTORS.

FAILURE TO DO SO MAY CAUSE DAMAGE TO THE EQUIPMENT.

PRECAUCIÓN

N'UTILISER QUE DES CONDUCTEURS EN CUIVRE!

LES BORNES DE L'UNITÉ NE SONT PAS CONÇUES POUR RECEVOIR D'AUTRES TYPES DE CONDUCTEURS.

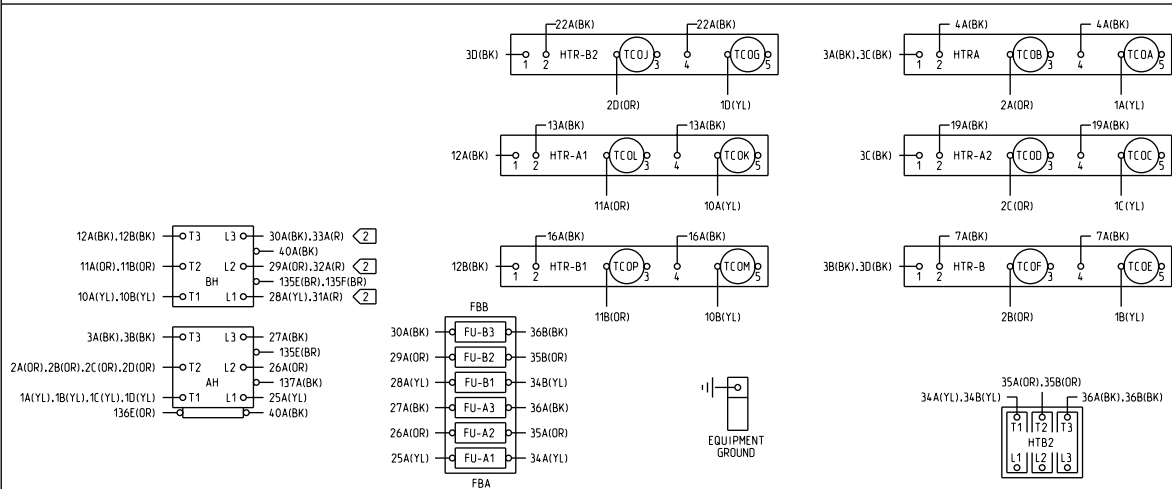
L'UTILISATION DE TOUT AUTRE CONDUCTEUR PEUT ENDOMMAGER L'EQUIPEMENT.

ATTENTION

UTILICE ÚNICAMENTE CONDUCTORES DE COBRE!

LAS TERMINALES DE LA UNIDAD NO ESTÁN DISEÑADAS PARA ACEPTAR OTROS TIPOS DE CONDUCTORES.

SI NO LO HACE, PUEDE OCASIONAR DAÑO AL EQUIPO.



NOTES:

- FIELD CONNECT CONTROL LEADS AS SHOWN:  
137B(BK) - LTB2-W1 (FIRST STAGE HEAT)  
136B(OR) - LTB2-W2 (FIRST STAGE HEAT)  
135B(BR) - LTB2-J (HEATER/FAN INTERLOCK)
- WHEN USING SINGLE POINT POWER ENTRY THROUGH ELECTRIC HEAT CONTROL BOX, REMOVE CONNECTORS CN-1 AND CN-2 AND CN-3 FROM THE END OF WIRES 31A(R) AND 32A(R) AND 33A(R) THEN TERMINATE THEM INTO BOX LUGS LOCATED ON THE BOTTOM OF THE INDOOR FAN CONTACTOR IN THE AIR HANDLER CONTROL BOX. SEE THE ELECTRIC HEAT INSTALLER'S GUIDE FOR INSTALLATION INSTRUCTIONS.
- UNLESS OTHERWISE NOTED, ALL SWITCHES ARE SHOWN AT 25°C (77°F) AT ATMOSPHERIC PRESSURE, AT 50% RELATIVE HUMIDITY WITH ALL UTILITIES TURNED OFF AND AFTER A NORMAL SHUTDOWN HAS OCCURRED.
- DASHED LINES INDICATE RECOMMENDED FIELD WIRING BY OTHERS. DASHED LINE ENCLOSURES AND/OR DASHED DEVICE OUTLINES INDICATE COMPONENTS PROVIDED BY THE FIELD. PHANTOM LINE ENCLOSURES INDICATE ALTERNATE CIRCUITRY OR AVAILABLE SALES OPTIONS.
- NUMBERS ALONG THE RIGHT SIDE OF THE SCHEMATIC DESIGNATE THE LOCATION OF CONTACTS BY THE LINE NUMBER. AN UNDERLINED NUMBER INDICATES A NORMALLY CLOSED CONTACT.
- THERMOSTAT DEVICES ARE EQUIPPED WITH AN AUTO-RESETTING THERMAL LIMIT SWITCH AND ONE-SHOT THERMAL LIMIT FUSE.