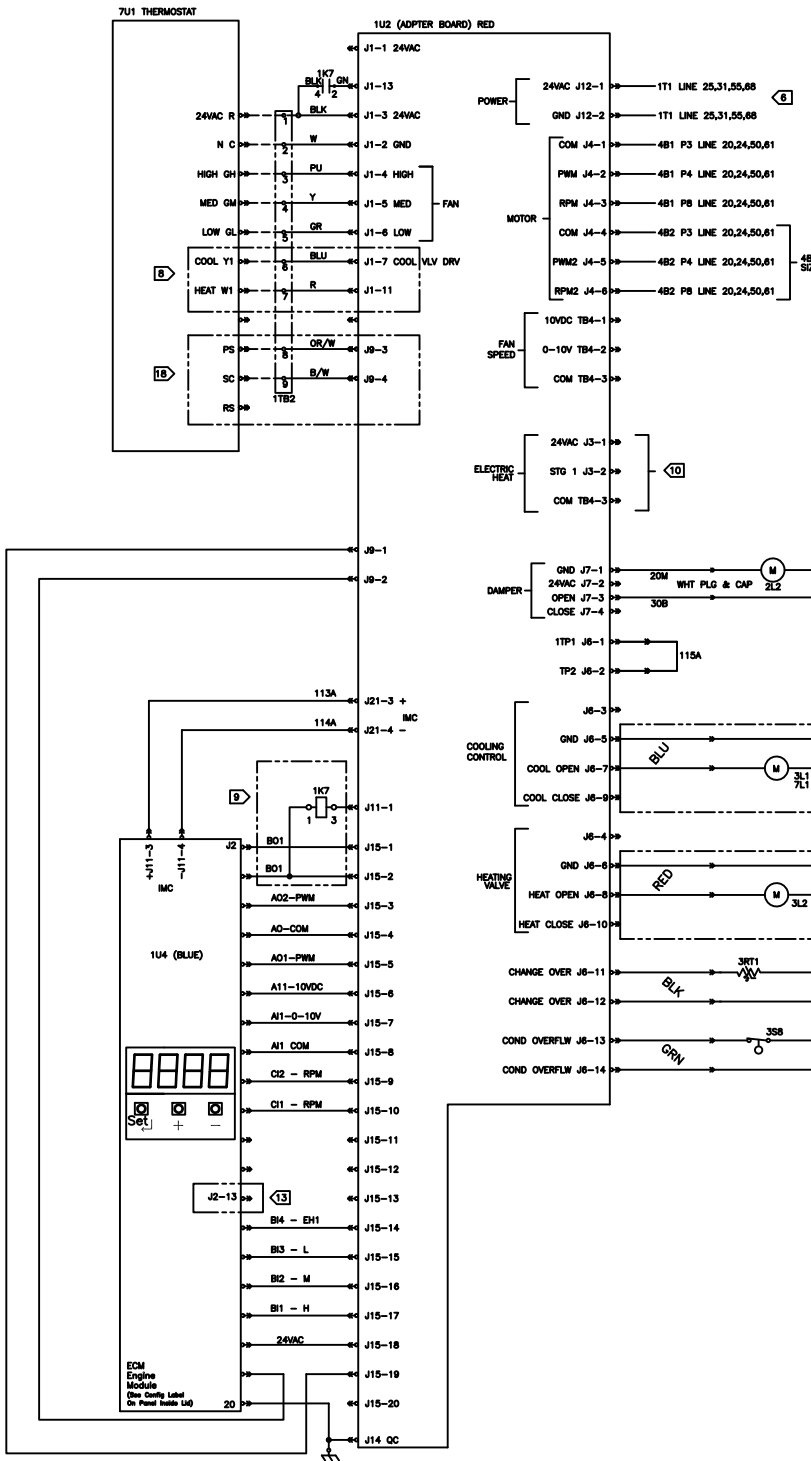
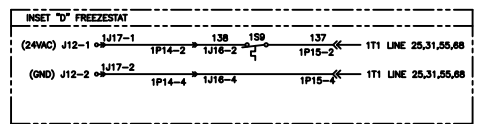
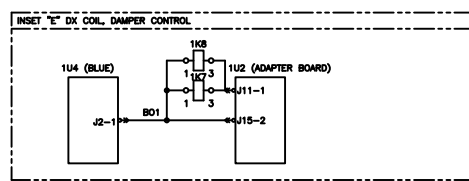
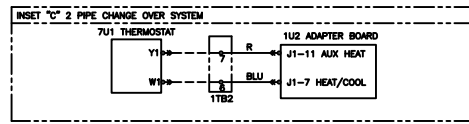
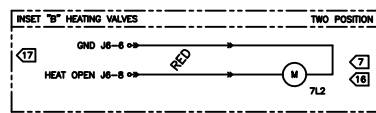
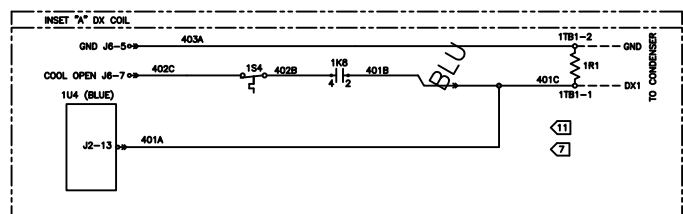


NOTES :

1. UNLESS OTHERWISE NOTED, ALL SWITCHES ARE SHOWN AT 25° C (77° F), WITH ALL UTILITIES TURNED OFF, AND AFTER A NORMAL SHUTDOWN HAS OCCURRED.
2. DASHED LINES INDICATE RECOMMENDED FIELD WIRING BY OTHERS. DASHED LINED ENCLOSURES AND/OR DASHED DEVICE OUTLINES INDICATE COMPONENTS PROVIDED BY THE FIELD. PHANTOM LINE ENCLOSURES INDICATE ALTERNATE CIRCUITRY OR AVAILABLE SALES OPTIONS. SOLID LINES INDICATE WIRING BY TRANE.
3. NUMBERS ALONG THE LEFT SIDE OF THE SCHEMATIC DESIGNATE THE LOCATION OF COMPONENTS BY LINE NUMBER.
4. ALL FIELD WIRING MUST BE IN ACCORDANCE WITH THE NATIONAL ELECTRIC CODE (NEC), STATE AND LOCAL REQUIREMENTS. ALL FIELD WIRING MUST HAVE AN INSULATION VOLTAGE RATING THAT EQUALS OR EXCEEDS UNIT RATED VOLTAGE.
5. WIRING SHOWN IS FOR 24VAC POWER SECTION, SEE INSET D FOR FREEZE/STAT SECTION.
6. USE CLASS 2 WIRING.
7. WIRING SHOWN IS FOR NOT 2 PIPE CHANGE OVER SYSTEM, FOR 2 PIPE CHANGE OVER SYSTEM SEE INSET C.
8. WIRING SHOWN IS FOR STANDARD COIL/DAMPER CONTROL FOR DX COIL/DAMPER CONTROL. SEE INSET E.
9. ELECTRIC HEAT WIRING SHOWN ON SHEETS 23114699 THRU 23114714, SINGLE STAGE.
10. FIELD INSTALLED CONDENSING UNIT CAN BE WIRED BETWEEN TERMINALS 11B1-1 TO 11B1-2 FOR SINGLE STAGE. REMOVE RESISTOR 1R1 PRIOR TO WIRING CONDENSOR.
11. WIRING SHOWN IS FOR FACTORY INSTALLED 2 POSITION VALVES. SEE INSET "B" FOR FIELD INSTALLED 2 POSITION VALVES.
12. WIRING SHOWN IS FOR FACTORY AND FIELD INSTALLED 2 POSITION VALVE/COIL FOR DX COIL. SEE INSET.
13. FIELD SUPPLIED ACTUATOR WIRING UTILIZES THE SAME CONNECTION POINTS AS FACTORY ACTUATOR WIRING.
14. VALVES SHOWN IN NORMALLY CLOSED POSITION, FOR NORMALLY OPEN POSITION, THE VALVE SIGNAL BECOMES CLOSE.
15. WIRING SHOW IS FOR ENTERING WATER TEMP. SENSOR FOR 2 PIPE CHANGE OVER SYSTEM.
16. WIRING SHOW IS FOR OVERFLOW SW. FOR W/O OVERFLOW SW SEE INSET F.

AREA	LOCATION
1	CONTROL PANEL
2	CONTROL END
3	PIPING END
4	FAN SECTION
5	COIL SECTION
6	CUSTOMER INSTALLED
7	FIELD SUPPLIED DEVICE

DEVICE DESIGNATION	DESCRIPTION	LINE NUMBER
7U1	THERMOSTAT	97
3L1/7L1	COOLING VALVE	75
3L2/7L2	HEATING VALVE	79,127
2L2	DAMPER ACTUATOR	116
1S9	FREEZE-STAT	99
3RT1	AUTOCHG TEMP SNRS	129
1U2	ADAPTER BOARD	98,78
1U4	ENGINE BOARD	129,79
3S8	CONDENSATE OVERFLOW SWITCH	132
1TB1	DX TERMINAL BLOCK	120
1R1	DX RESISTOR	120
3S8	CONDENSATE OVERFLOW SWITCH	132
1S4	DX FROSTSTAT	120
1K7	FAN STATUS	99,124
1TB2	TB FOR WALL MOUNT	99,82
1K8	FAN STATUS	75,92



482 ONLY USED ON SIZE 100 AND 120

7
13
16
17

7
12
17
18

18

DATE	18 DEC 2019
BY	TRANE
FOR	35187190
REVISION	1
DATE	18 DEC 2019
BY	TRANE
FOR	35187190
REVISION	1
DATE	18 DEC 2019
BY	TRANE
FOR	35187190
REVISION	1