

# Connected Mechanical Service

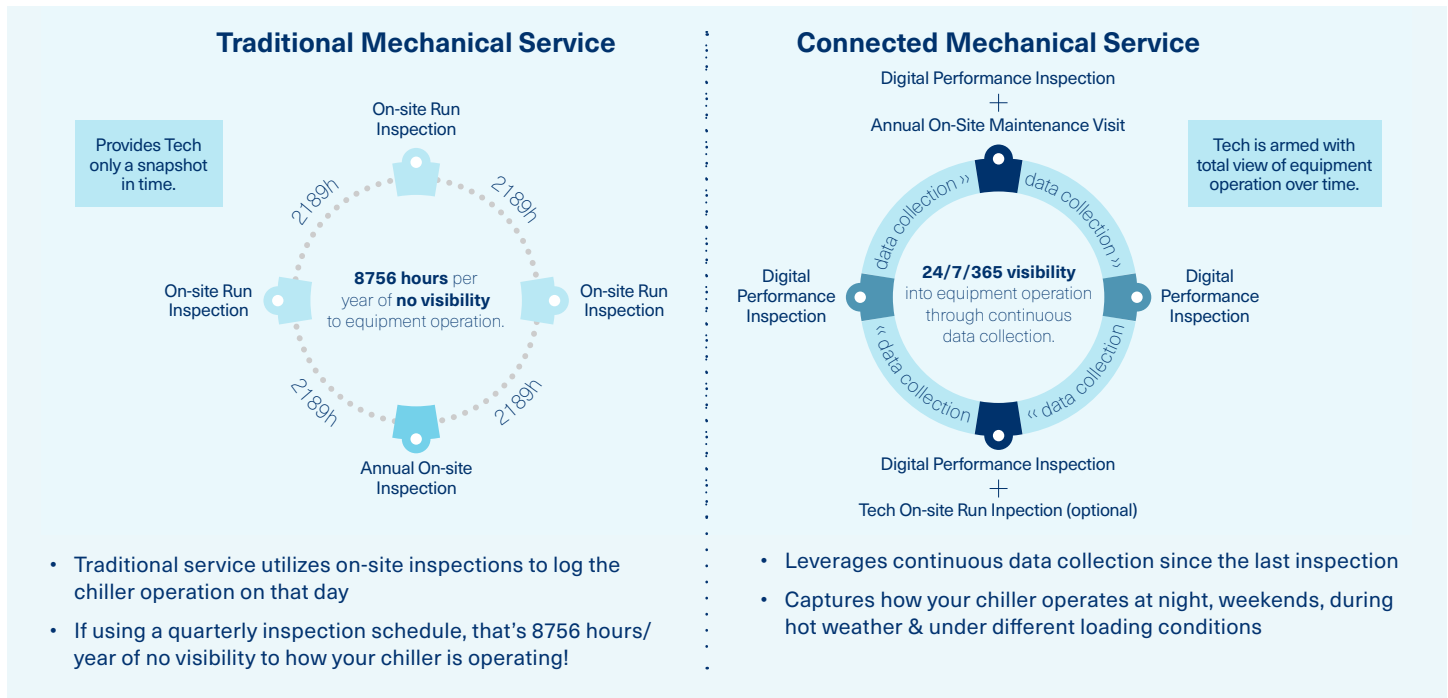
Leverage technology to support your data center business



## Value of Connected Mechanical Service Over Traditional Service

Supplement your traditional mechanical service agreements with continuous data collection and digital analytics to find where best to invest your time and resources. Suboptimal operating conditions can go undetected and erode equipment, resulting in poor performance and increased operating costs. By deploying Connected Mechanical Service, you can:

- Reduce labor shortage burden
- Reduce risk of HVAC related human error
- Increase visibility into equipment operation
- Enhance HVAC system reliability and uptime



## Upgrade what your traditional, on-site Service Agreement delivers

Connected Mechanical Service leverages cloud-based equipment analytics to provide a digital equipment inspections as well as equipment performance trends to support the mechanical technician in servicing your equipment. Connecting your HVAC equipment is an easy first step toward a bigger digital transformation, putting more tools & insights in your technician's toolbox.

## Reduce staffing burdens

Utilizing central interface management of your HVAC system will allow you the ability to focus your staff on the right areas. Your Trane technician can also help alleviate some of burden caused by labor shortages and human error through digital inspections to ensure your system is running properly.

## Add virtual touchpoints, securely

Increase equipment oversight by adding digital inspections between scheduled technician visits—or anytime you think you might need it. Trane's decades of experience shape the proprietary analytics that detect what even the most skilled technicians may not see or hear. At Trane, we integrate cybersecurity best practices into our entire line-up of building automation systems and next generation equipment controls. Our controls are designed to proactively provide protection against incidents using tools such as encryption, multiple layers of access control and authentication to protect your data.

## Flexibility to suite your business needs

Once your HVAC equipment is able to connect to the cloud, you are eligible to begin using Connected Mechanical Service. From Trane's Tracer® SC+ building automation system (BAS) to Symbio® 800 controller or a completely separate third party BAS, there are a number of connectivity options to provide your system's data to the Trane Connect® platform.

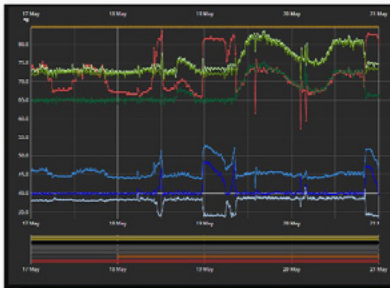


## What additional value will I get?

Highlights  
issues and  
findings

Details  
inspection  
test results

Compares  
Performance  
vs. design



### Lowest Total Cost of Ownership

Detailed findings, issues and recommendations

### Peace of Mind

Chiller performance tracking compared to original design

### Trusted Partner

Regular OEM Technician reviews and priority service level



Trane – by Trane Technologies (NYSE: TT), a global climate innovator – creates comfortable, energy efficient indoor environments through a broad portfolio of heating, ventilating and air conditioning systems and controls, services, parts and supply. For more information, please visit [trane.com](http://trane.com) or [tranetechnologies.com](http://tranetechnologies.com).

All trademarks referenced in this document are the trademarks of their respective owners.

© 2024 Trane. All Rights Reserved.

SRV-SLB280-EN  
11/14/2024