



Connected Mechanical Service Agreements

OEM Technician Expertise with Improved Insights & Troubleshooting

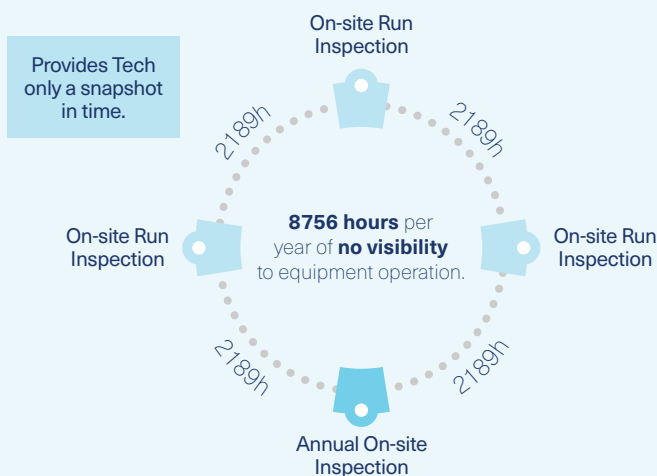
Value of Connected Mechanical Service Agreements Over Traditional Service Agreements

Upgrade your traditional Trane mechanical service agreements with connected equipment inspections that leverage continuous data collection and our digital analytics to identify unfavorable operating trends and diagnostics that can erode equipment performance in increased operating costs.

- Arm your OEM Technician with 24/7 inspection insights about equipment operation
- OEM-based remote support & troubleshooting
- Improved asset management & equipment performance reporting
- Increased transparency around your Service

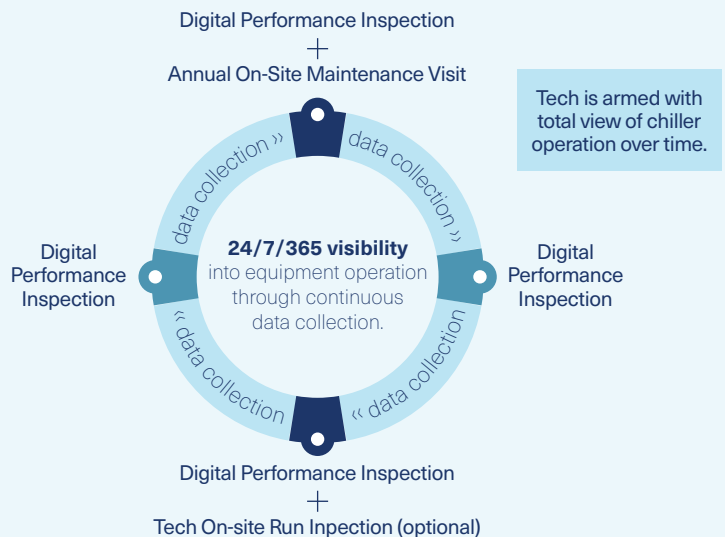


Traditional Mechanical Service



- Provides only an operational "snapshot in time" analysis
- Traditional on-site service utilizes on-site inspections to log the chiller operation on that day
- If using a quarterly inspection schedule, that's 6567 hours/year of no visibility to how your chiller is operating!

Connected Mechanical Service



- Leverages continuous data collection since the last inspection
- Captures how your chiller operates at night, weekends, during hot weather and under different loading conditions
- 24/7 insights stored for use by your Trane chiller tech

Upgrade what your traditional, on-site Service Agreement delivers.

A Connected Mechanical Service Agreement leverages cloud-based equipment analytics to provide a digital equipment inspection, as well as equipment performance trends to support the mechanical technician in conducting remote troubleshooting as needed.

Add virtual touchpoints.

Once connected, it's easier than ever to increase equipment oversight by adding remote inspections between scheduled technician visits-or anytime you think you might need it. Trane's decades of experience shape the proprietary analytics that detect what even the most skilled technicians may not see or hear.

Your trusted Trane technician: Now with digital superpowers.

Connecting your HVAC equipment is an easy first step toward a bigger digital transformation, literally putting more tools & insights in your technician's toolbox. Your same OEM Technician stays with your service agreement providing flexible on-site and remote inspections as well as the ability to check in at anytime to provide remote support.



Same tasks as an on-site inspection, performed remotely

- Check general operation of the unit
- Log operating data (snapshot)
- Check equipment sub-system operation
 - Purge unit
 - Refrigeration system
 - Control circuit
 - Motor and VFD
 - Lubrication system
- Review operating procedures with operating personnel
- Provide report of completed work, any uncorrected deficiencies detected and operating log

With better visibility into operation since last inspection!

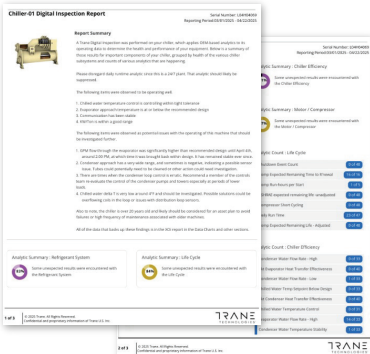
- Digital Inspection Toolbox provides 24/7 information and insights when your equipment is in operation
- Allows Trane technicians to better analyze and troubleshoot issues
- New Equipment Performance Report included—track how your equipment is performing against original design specifications

What additional value will I get?

Highlights
issues and
findings

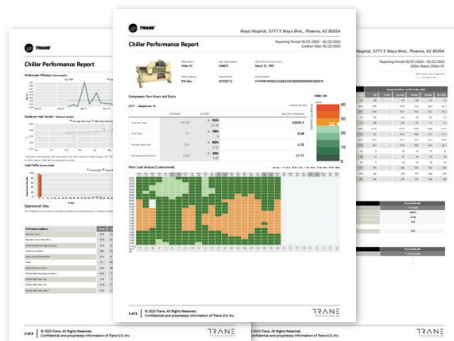
Details
inspection
test results

Compares
performance
vs. design



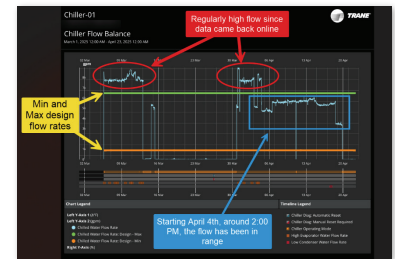
Lowest Total Cost of Ownership

Detailed findings, issues
& recommendations



Peace of Mind

Equipment performance
tracking compared to
original design



Improved Equipment Performance

Finding issues earlier increases
uptime and efficiency

*Currently available for VRF, Air-cooled and Water-cooled chillers, where connectivity can be maintained via the Symbio® unit controller or the Building Automation System.



Trane – by Trane Technologies (NYSE: TT), a global climate innovator – creates comfortable, energy efficient indoor environments through a broad portfolio of heating, ventilating and air conditioning systems and controls, services, parts and supply. For more information, please visit trane.com or tranetechnologies.com.

All trademarks referenced in this document are the trademarks of their respective owners.

© 2025 Trane. All Rights Reserved.

SRV-SLB272-EN
10/29/2025