



ASHRAE® Standard 15-2022 A2L EDVC Example



Packaged Rooftop Multiple-Zone VAV System

The following abridged material is from Trane application manual APP-APM001*-EN, *Refrigeration Systems and Machinery Rooms: Application Considerations for Compliance with ASHRAE® Standard 15-2022*. It is strongly recommended that any user of this document also reviews the source material for additional clarifications, givens, and commentary.

A packaged rooftop system is classified by Standard 15 as a “high-probability” system, since leaked refrigerant has a high probability of entering the occupied space. When designing a high-probability system, the occupied space must be of sufficient “volume” to safely disperse and dilute any leaked refrigerant. Dilution is the solution! The maximum allowable refrigerant charge, known as the Effective Dispersal Volume Charge (EDVC), is calculated using the volume available to disperse the leaked refrigerant, and depends on the refrigerant’s safety group classification.

Standard 15 may provide more than one approach for complying with the EDVC. The designer may use one or a combination of several of these approaches. For the purposes of brevity, it is not possible to discuss all possible approaches, so this document only focuses on the simplest approach. Refer to Trane application manual APP-APM001*-EN for additional approaches.

Because ASHRAE Standard 15 is under continuous maintenance, the requirements can change frequently. This document is based on the 2022 published version. Refer to the ASHRAE web site for the most current version of the standard, including any published addenda and errata.

Example: Packaged (DX) Rooftop Multiple-Zone VAV System Serving a “Commercial” Occupancy with an A2L Refrigerant

Given: A 20-ton packaged, direct-expansion (DX) rooftop unit with variable-airflow control serves a small office building (Figure 1). The rooftop unit consists of two independent 10-ton refrigeration circuits. The refrigerant is R-454B (A2L) and has a factory-installed refrigerant detector.

Each occupied space is served by a VAV terminal unit, with minimum airflow setpoints higher than 10 percent of design supply airflow. Supply air is ducted to diffusers located throughout the occupied spaces, and a free-return interstitial ceiling plenum provides the return-air path to the rooftop unit. The supply ductwork is located in this ceiling plenum.

Per Standard 15, the occupancy classification is “commercial” ($F_{occ} = 1.0$) and this system is categorized as a “high probability” system.

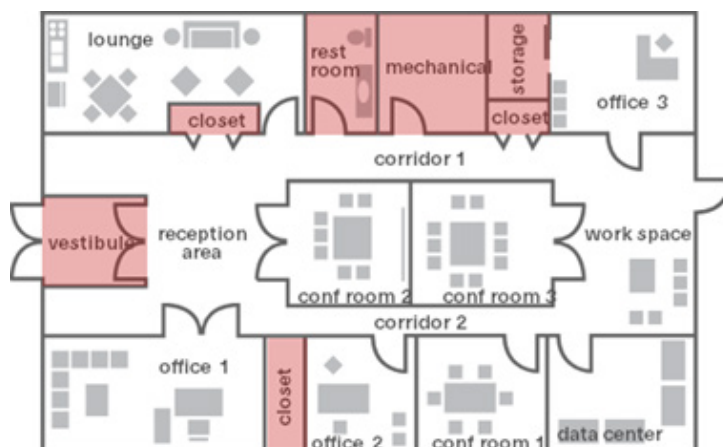
Solution (A2L refrigerant): This is an example of “connected spaces” via a ducted air distribution system (per Section 7.2.3.3). When calculating the effective dispersal volume (V_{eff}) of the connected spaces in this example, include the following:

- The volumes of all spaces served by the common supply ductwork and return-air path, since the VAV dampers in this example do not close below 10 percent of design supply airflow when the supply fan is operating. (The standard states that we can ignore fire or smoke dampers that only close in an emergency.)
- The volume of the supply ductwork. However, for this example, this volume should be ignored as the ductwork is routed through the ceiling plenum, which is used as part of the return-air path.
- The volume of the interstitial ceiling plenum, since it is part of the return-air path in this example.

...but exclude the following:

- The volumes of the mechanical room, storage room, and closets since these spaces are not served by the supply ductwork or the return-air plenum and can be closed (isolated) from the source of the refrigerant leak by a door.
- The volumes of the vestibule and restroom since they are conditioned by transfer air only.

Figure 1. Example office building served by a packaged DX rooftop VAV system



For this example (Table 1), the effective dispersal volume (V_{eff}) of the connected spaces is calculated to be 61,072 ft³.

The rooftop unit consists of two independent 10-ton refrigeration circuits, each of which contains 10.2 lb of R-454B. Per Section 7.3.4.2, the releasable refrigerant charge (m_{rel}) is the charge in each independent circuit—which is 10.2 lb in this example.

Standard 34 lists R-454B as a Group A2L refrigerant with an LFL to 18.5 lb/1000 ft³ or 0.0185 lb/ft³.

Since this is a high-probability system used for human comfort, the use of a Group A2L refrigerant means that the requirements of Section 7.6 apply.

This refrigeration system is ducted, and m_{rel} is greater than 4 lb, so Section 7.6.2.3 requires that it be equipped with a leak detection system that is listed with the equipment. The rooftop unit in this example includes a refrigerant detector—which complies with the requirements of Section 7.6.2.4—to initiate air circulation in the event that a leak is detected.

Therefore, per Section 7.6.1.1, the EDVC is calculated to be 565 lb:

$$EDVC = 0.0185 \text{ lb/ft}^3 \times 61,072 \text{ ft}^3 \times 0.5 \times 1.0 = 565 \text{ lb}$$

For this example, the releasable refrigerant charge from each circuit ($m_{rel} = 10.2 \text{ lb}$) is lower than the EDVC, so this system complies with the limit prescribed by Section 7.6.1.

Refer to the Trane application manual APP-APM001*-EN for more details.

Table 1. Example office building served by the rooftop VAV system

| Occupied Space | Volume of Space, ft ³ | V_{eff} , ft ³ |
|----------------|----------------------------------|-----------------------------|
| Office 2 | 2695 | 61,072 |
| Conf Room 1 | 3144 | |
| Conf Room 2 | 3327 | |
| Data Center | 3593 | |
| Conf Room 3 | 3826 | |
| Office 3 | 3992 | |
| Office 1 | 5389 | |
| Lounge | 7319 | |
| Reception | 8383 | |
| Corridor 1 | 2146 | |
| Corridor 2 | 2146 | |
| Work Space | 6387 | |
| Ceiling Plenum | 8725 | |

Systems with air circulation

If the system has either continuous air circulation (except during short periods for maintenance or service) or air circulation that is initiated by a refrigerant detector that complies with Section 7.6.2.4, the EDVC is calculated as follows (per Section 7.6.1.1):

$$EDVC = LFL \times V_{eff} \times CF \times F_{occ}$$

where,

EDVC = effective dispersal volume charge, lb (kg)

V_{eff} = effective dispersal volume per Sections 7.2.1 through 7.2.3, ft³ (m³)

LFL = lower flammability limit of the refrigerant, lb/ft³ (kg/m³)*

CF = concentration factor = 0.5

F_{occ} = occupancy adjustment factor (0.5 for institutional; 1.0 for all others)

*Note that the values tabulated in ASHRAE Standard 34 are in units of lb/1000 ft³ and g/m³, so be sure to convert to the correct units when using this formula.

When air circulation is used to disperse leaked refrigerant, the UL product safety standard (UL 60335-2-40) prescribes the minimum circulation air flow rate.



Trane – by Trane Technologies (NYSE: TT), a global climate innovator – creates comfortable, energy efficient indoor environments through a broad portfolio of heating, ventilating and air conditioning systems and controls, services, parts and supply. For more information, please visit trane.com or tranetechnologies.com.

All trademarks referenced in this document are the trademarks of their respective owners.

© Trane. All Rights Reserved.

RT-PRB040B-EN
December 2023