



# Data Center Product and Offering Line Card

Turning Thermal Management Strategies Into Growth Strategies

# Why Trane®

With a focus on innovation and performance engineering, Trane works with you and across the AI ecosystem to design, test and validate integrated thermal management systems that are aligned to perform as one.

As a trusted innovator in thermal management, we offer a portfolio of scalable systems including air- and water-cooled chillers, chiller plant controls, fan coil walls and liquid cooling solutions, all supported by a world-class, local-to-you service network. Our expertise across design, development and operation helps you maintain optimal conditions, improve efficiency, support your sustainability goals and grow smoothly as demands evolve.



## Trane Capabilities



### Integrated and Engineered Systems

Our innovative products, expert services, witness testing, modeling and ongoing optimization come together as integrated systems, helping ensure your thermal management system meets current needs and maintains optimized performance as demands evolve.



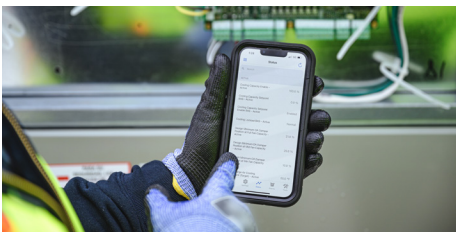
### Chiller Plant Control

This configurable system orchestrator leverages Trane's deep expertise and system data to fine-tune chiller performance, coordinate operation across equipment and drive more efficient, consistent outcomes over time.



### Start-Up, Commissioning & Proactive Maintenance Services

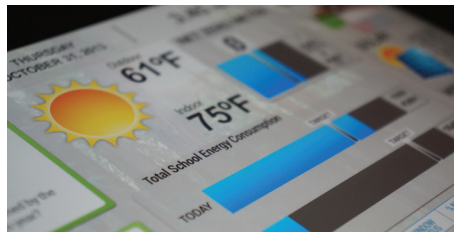
Trane ensures uninterrupted operation and peak performance of your equipment, reducing costs and extending its life with reliable, proactive maintenance by over 6,000 local, data-center-trained technicians available 24/365.



### Optimization Services

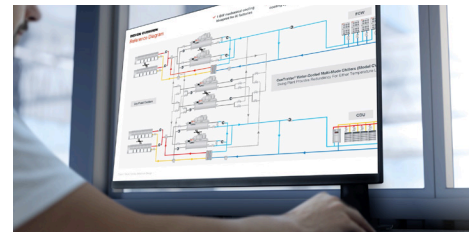
By connecting system data with expert analysis, our digital solutions help you understand what's happening and what to do next. Use Trane's analytics to enhance performance, efficiency and productivity. For personalized guidance, consult with us to achieve your financial and environmental goals.

- Connected Facility Service
- Intelligent Service
- Data insights with Trane Cloud
- Trane® AI Control



### Energy Services

Trane enhances facility efficiency and sustainability with decarbonization solutions, implementation services and financing options. Using expertise and data, we develop strategies to achieve your carbon reduction, resiliency and energy optimization goals.



### Reference Designs

Trane's Continuum Rubin DSX Reference Designs give you a proven starting point for modern data centers. Each design brings together cooling, energy use and reliability into a coordinated system so your team can move faster with fewer unknowns.

[Learn more](#)



## Trane Offerings

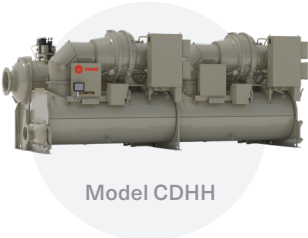
While Trane components work well on their own, system performance is multiplied when they're integrated into a complete thermal management system.



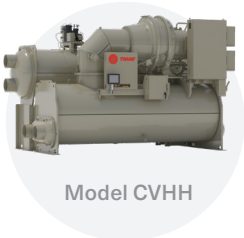
### WATER-COOLED CENTRIFUGAL CHILLERS

#### CenTraVac®

Trane CenTraVac® CDHH and CVHH chillers deliver reliable, efficient, scalable cooling for mission-critical data centers. With capacities up to 6,000 tons (21MW) per unit, Rapid Restart in 43 seconds and ultra-low-GWP R-1233zd, CenTraVac provides efficient cooling with proven simplicity and low leak rates, supporting lower cost of ownership and long-term operation.



Model CDHH



Model CVHH



### AIR-COOLED CHILLERS

#### Air-Cooled Magnetic Bearing Chiller

The Trane TCA Air-Cooled Magnetic Bearing Chiller provides high-capacity, high-efficiency data center cooling in a streamlined, fully packaged solution. With over 850 tons (3MW) in a single footprint, it reduces system complexity, speeds deployment and maintains reliable operation under rapid load swings and high ambient conditions for hyperscale and colocation facilities.



Model TCAA  
300-400T



Model TCAB  
400-600T



Model TCAB  
600-850T

#### Ascend™ Air-Cooled Chiller

The Ascend™ ACR Air-Cooled Chiller delivers up to 550 tons (2MW) of efficient, reliable cooling with integrated free cooling and strong high-ambient performance. Ideal for growing data centers, it reduces installation complexity and energy use while maintaining stable operation during rapid IT load changes.



Model ACR  
550T

#### Ascend™ Trim Cooler

Features high-efficiency free-cooling, leveraging ambient air for cooling. Reduces the need for mechanical cooling, lowering energy usage. Seamlessly integrates directly to Trane thermal management systems, helping to boost system efficiency.



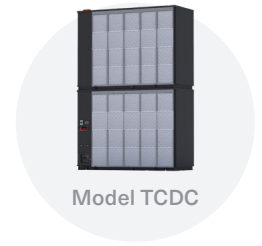
Model ACR  
Trim Cooler



## AIR HANDLING SOLUTIONS

### Fan Coil Wall

With up to 900 kW capacity and 130K CFM airflow, the Trane Fan Coil Wall delivers precise, reliable cooling for high-density data centers. Modular configurations, top-mounted connections and factory-installed Symbio® controls accelerate deployment and support tight thermal control under AI and GPU-driven loads.



Model TCDC

### Computer Room Air Handler

The Trane Computer Room Air Handler (CRAH) delivers targeted, efficient and scalable cooling for high-density data center environments. With 50-300 kW of chilled-water cooling capacity, a compact footprint, ECM fan arrays and factory-installed Symbio® 500 controls, it enables precise temperature control and smooth response to rapid IT load changes. Its modular design accelerates installation, simplifies room airflow planning and supports phased growth — all while improving energy efficiency and helping reduce PUE.



Model VCDC



## LIQUID COOLING SOLUTIONS

### Coolant Distribution Unit (CDU)

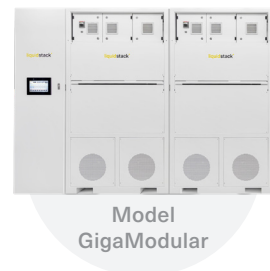
The 1MW CDU meets rigorous cooling demands, ensuring reliable thermal management for heat-intensive AI factories while optimizing floor space. Features include integrated ATS with supercapacitor, 25-micron filtration, up to 1,350 kW cooling capacity in a compact 900 mm footprint, and front and back service access.



Model CDU-1MW

### GigaModular™ CDU

The GigaModular™ CDU in 2.5MW to 14MW capacities, delivers efficient direct-to-chip liquid cooling for hyperscale and colocation data centers. This compact Cooling Distribution Unit reduces energy use and costs while ensuring top performance and scalability.



Model GigaModular



Learn more at  
[trane.com/datacenters](https://trane.com/datacenters)



All trademarks referenced in this document are the trademarks of their respective owners.

Trane – by Trane Technologies (NYSE: TT), a global climate innovator – creates comfortable, energy efficient indoor environments through a broad portfolio of heating, ventilating and air conditioning systems and controls, services, parts and supply. For more information, please visit [trane.com](https://trane.com) or [tranetechnologies.com](https://tranetechnologies.com).

© 2026 Trane. All Rights Reserved | EDU-SLB073-EN | 05/28/2026