

# Data Center Line Card

Improving How Data Centers are Designed, Developed and Operated



## Why Trane®

**Data center needs are complex.** With a focus on innovation and performance engineering, Trane works with you and across the AI ecosystem to design, test, and validate state-of-the-art thermal management systems that uphold the highest standards of reliability and efficiency. As a trusted innovator in thermal management, we offer a portfolio of scalable systems including air- and water-cooled chillers, chiller plant controls, fan coil walls, and liquid cooling solutions, all supported by a world-class local-to-you service network.

Our expertise across design, development, and operation helps ensure that hyperscale and colocation data centers achieve optimal conditions, driving performance and sustainability in every environment now and for what comes next.

## Trane Capabilities

### Integrated and Engineered Systems



Our innovative products, expert services, witness testing, modeling, and ongoing optimization ensure our thermal management systems meet current and future needs.

### Chiller Plant Control



Trane Chiller Plant Control uses operational data to optimize your data center, reducing costs, minimizing energy consumption, and maximizing uptime for a more sustainable and integrated system.

### Start-Up, Commissioning and Proactive Maintenance Services



Trane ensures uninterrupted operation and peak performance of your equipment, reducing costs and extending its life with reliable, proactive maintenance by over 2,900 local, data center-trained technicians available 24/365.

### Optimization Services



Trane's digital solutions enable remote inspections, troubleshooting, and facility optimization, helping you manage data center equipment affordably. Use Trane's analytics to create dashboards that enhance building performance, efficiency, and productivity. For personalized guidance, consult with Trane to achieve your financial and environmental goals.

- Connected Facility Service
- Intelligent Service
- Data insights with TraneConnect™
- Trane® Autonomous Control



## Engineer and Contractor Resources



Trane is here to support, enable and educate Engineers and Contractors through comprehensive tools and resources, design and analysis tools, professional education and training, BIM and CAD drawings, and pre-engineered system solutions.  
[traneengineer.com](http://traneengineer.com) | [tranecontractors.com](http://tranecontractors.com)

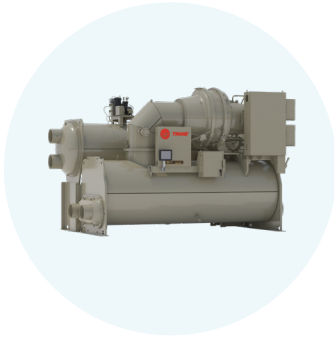
## Energy Services



Trane enhances facility efficiency and sustainability with decarbonization solutions, implementation services, and financing options. Using expertise and data, we develop strategies to achieve your carbon reduction, resiliency, and energy optimization goals.

## Trane Offerings

### Water-Cooled Centrifugal Chillers



**CenTraVac®**  
**Models CVHH and CDHH**  
CenTraVac chillers deliver high-performance, energy-efficient thermal management for a application challenges. Advanced features help reduce operational costs environmental impact. Multi-stage compressor; Heating and Cooling capable; Free Cooling; Heat recovery operation, Symbio® 800 controller; 900-4000+ tons (3,165-14,067 kW); R-1233zd



### Air-Cooled Chillers

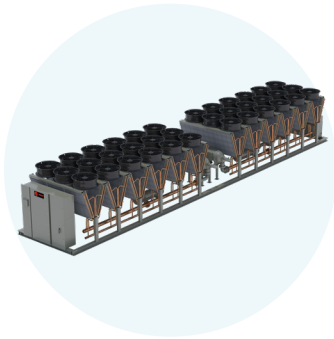


**Trane® Air-Cooled  
Magnetic Bearing Chiller**  
200-650 Ton

**Trane® Air-Cooled Magnetic  
Bearing Chiller**  
Up to 3MW chiller offers superior cooling capacity, cost efficiency, reduced power consumption, quick start-up, premium reliability, low sound transmission, and advanced control systems with Trane's Symbio® 800 controller. 200-850 tons (703-2989 kW); R-515B



**Trane® Ascend™ Air-Cooled  
Chiller Model ACR**  
Efficiently operates at up to 145°F, addressing the heat from modern GPUs and AI. Features free cooling with a factory-installed water side economizer, reducing initial, installation, and energy costs throughout its lifespan. 500 tons (1758 kW); R-1234ze

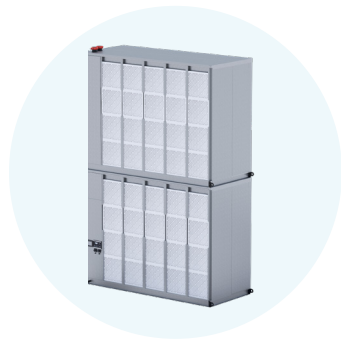


**Trane® Air-Cooled  
Magnetic Bearing Chiller**  
600-850 Ton



**Trane® Ascend™  
Model ACR Trim Cooler**  
Features high-efficiency free-cooling, leveraging ambient air for cooling. Reduces the need for mechanical cooling, lowering energy usage. Seamlessly integrates directly to Trane thermal management systems, helping to boost system efficiency.

## Air Handling Solutions



### Fan Coil Wall Model TCDC

The Trane TCDC Fan Coil Wall is an advanced, energy-efficient cooling solution with capacities up to 670kW and 110K CFM, designed to maintain precise temperature and humidity control in modern data centers, ensuring optimal performance and uptime.

## Liquid Cooling Systems



### Coolant Distribution Unit Model TCDU

Trane's collaboratively designed 1 MW CDU meets rigorous cooling demands, ensuring reliable thermal management for heat-intensive AI factories while optimizing floor space. Features include integrated ATS with supercapacitor, 25-micron filtration, up to 1,350 kW cooling capacity in a compact 900 mm footprint, and front and back service access.



Learn More →



[Trane.com/DataCenters](https://Trane.com/DataCenters)



Trane – by Trane Technologies (NYSE: TT), a global climate innovator – creates comfortable, energy efficient indoor environments through a broad portfolio of heating, ventilating and air conditioning systems and controls, services, parts and supply. For more information, please visit [trane.com](https://trane.com) or [tranetechnologies.com](https://tranetechnologies.com).

All trademarks referenced in this document are the trademarks of their respective owners.

© 2025 Trane. All Rights Reserved.

EDU-SLB073-EN  
05/15/2025