

# Data Center Line Card

Improving How Data Centers are Developed, Designed and Operated



## Why Trane®

**Data center needs are complex.** Managing complexity is what we do best. As a thermal management trusted innovator, we offer a portfolio of scalable systems including air- and water-cooled chillers, chiller plant controls, fan coil walls, and liquid cooling solutions all supported by a world-class local-to-you service network. Whether you are developing, designing, or operating in mission critical environments our goal is to help you create and maintain a more sustainable data center infrastructure that brings efficiency now and for what comes next.

## Trane Capabilities

### Engineered Systems



Our innovative products, expert services, witness testing, modeling, and ongoing optimization ensure our thermal management systems meet current and future needs.

### Chiller Plant Controls



Trane Chiller Plant Controls use optimization strategies that leverage operational data to make targeted adjustments to bring your data center system back to its optimal state which helps manage costs. The result is a more sustainable, optimized, and integrated system that minimizes energy consumption and maximizes uptime.

### Start-Up, Commissioning and Proactive Maintenance Services



Trane is committed to the uninterrupted operation of your mission critical equipment and systems, helping to enable peak performance and resource optimization. We can help reduce operating costs and extend the life of your equipment with planned, reliable, preventative and proactive scheduled maintenance and repair by Trane's extensive network of over 2,900 local-to-you, data center-trained technicians, available 24/365.

- Service Agreements
  - Connected Mechanical Service Agreements
- Extended Warranty
- Quoted Repair Products

### Optimization Services



From enabling remote equipment inspections to digital troubleshooting to optimizing your facility, Trane's digitally enabled offerings help you maintain data center equipment and manage your operations more affordably.

Leverage your data and Trane's analytics to create simple dashboards that can help you to understand performance of your building and its assets. Dashboards can help to find opportunities for increasing efficiency, decreasing energy use, and increasing productivity through system optimization. Or take the guesswork out and utilize one-on-one consultative support for guidance on how to reach your financial and environmental goals.

- Connected Facility Service
- Intelligent Service
- Data insights with TraneConnect™
- Trane® Autonomous Control



## Engineer and Contractor Resources



Trane is here to support, enable and educate Engineers and Contractors through comprehensive tools and resources, design and analysis tools, professional education and training, BIM and CAD drawings, and pre-engineered system solutions.  
[traneengineer.com](http://traneengineer.com) | [tranecontractors.com](http://tranecontractors.com)

## Energy Services

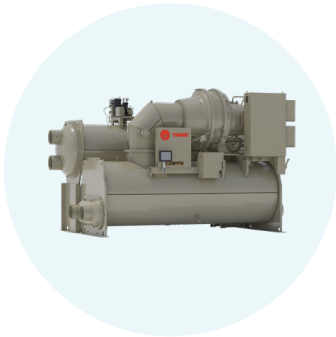


Trane enables more efficient, sustainable facilities by providing a single source for decarbonization and modernization solutions, programmatic implementation services, and financing and funding options.

We use deep expertise and a data-driven approach to understand how energy impacts your unique situation and collaborate to develop strategies to deliver your goals for carbon reduction, resiliency, and energy optimization.

## Trane Offerings

### Water-Cooled Centrifugal Chillers



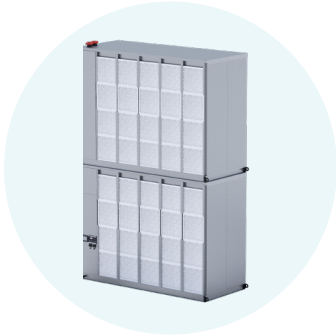
**CenTraVac®**  
**Models CVHH and CDHH**  
CenTraVac chillers deliver high-performance, energy-efficient thermal management for a application challenges. Advanced features help reduce operational costs environmental impact. Multi-stage compressor; Heating and Cooling capable; Free Cooling; Heat recovery operation, Symbio® 800 controller; 900 - 4000+ tons (3,165-14,067 kW); R-1233zd

### Air-Cooled Centrifugal Chillers



**Oil-Free Magnetic Bearing**  
**Model TCAA**  
Premium energy efficiency is TCAA's primary advantage. Designed for a wide ambient operating range, this chiller restores cooling quickly after a power loss thanks to Rapid Restart technology. Oil-Free Centrifugal; 200 - 440 tons (600 - 1,547 kW); R-513A, R-515B, R-134a

### Air Handling Solutions



**Fan Coil Wall**  
**Model TCDC**  
The Trane TCDC Fan Coil Wall is an advanced, energy-efficient cooling solution with capacities up to 670kW and 110K CFM, designed to maintain precise temperature and humidity control in modern data centers, ensuring optimal performance and uptime.



### Liquid Cooling Systems



**Ascend®**  
**Model ACR**  
The ACR model, part of Trane's Ascend® line of air-cooled chillers, offers an amazing combination of high energy efficiency and quiet performance. Variable Speed Helical Rotary Compressor; Free Cooling; Symbio® 800 controller; 150 - 550 tons (528 - 1,934 kW); R-513A

**Coolant Distribution Unit**  
**Model TCDU**  
Collaboratively designed, Trane's CDU is engineered to meet the rigorous cooling demands of. This high-performance 1 MW coolant distribution unit ensures reliable thermal management for even the most heat-intensive AI factory environments while optimizing floor space. Integrated ATS with supercapacitor; 25-micron filtration; up to 1,350 kW cooling capacity in a compact 900 mm footprint; front and back access for ease of service.



Learn More →



[Trane.com/DataCenters](https://Trane.com/DataCenters)



Trane – by Trane Technologies (NYSE: TT), a global climate innovator – creates comfortable, energy efficient indoor environments through a broad portfolio of heating, ventilating and air conditioning systems and controls, services, parts and supply. For more information, please visit [trane.com](https://trane.com) or [tranetechnologies.com](https://tranetechnologies.com).

All trademarks referenced in this document are the trademarks of their respective owners.

© 2025 Trane. All Rights Reserved.

EDU-SLB073-EN  
03/21/2025