

National Line Card

Products, Services, Solutions and Systems



Approach

Our goal is to deliver the outcomes that matter most to you—from more comfortable indoor environments to energy efficient operations. We take a consultative approach to understand your unique business objectives, gather data and information to make informed recommendations, and support you from implementation to validation.

Trane's Offerings

Our capabilities include commercial systems, energy services & solutions, contracting, controls/building automation, rentals and service.



Building Services

Help reduce operating costs and extend the life of your equipment with planned, reliable, preventative and proactive scheduled maintenance and repair by Trane factory trained technicians.

- Service Agreements
 - Connected Mechanical Service Agreements
- Extended Warranty
- Quoted Repair Products



Rental Services

24/7/365 local service, engineering expertise and an expansive fleet of rental products. Promptly provides temporary, scalable HVAC and power from standard applications to complex solutions.

- Water-Cooled Chillers, Air-Cooled Chillers, Temporary Power, Cooling Towers, Packaged A/C Units, Air Handlers, Portable A/C Units, Cold Storage Containers, Heat Pump Units



Thermal Management Systems

- Comprehensive Chilled Water Systems
- Comprehensive Heat Pump Chiller Systems
- CoolSense® Integrated Outdoor Systems
- Geothermal Systems
- Indoor Agriculture Systems
- Intelligent Variable Air Systems
- Thermal Battery Systems
- Variable Refrigerant Flow (VRF) Systems
- Zoned Rooftop Systems



Digital Services

Leverage your data and Trane's analytics to create simple dashboards that can help you to understand performance of your building and its assets. Dashboards can help to find opportunities for increasing efficiency, decreasing energy use, and increasing productivity through system optimization.

- Connected Building Service Agreements
- Turn building data into useful insights with Trane Connect™
- Trane® Autonomous Control



IAQ Services

Today there are more ways than ever to assess and manage indoor air quality, while keeping your goals for cost and sustainability in sight. Trane offers a variety of services, innovative technologies, and proven solutions for measuring and monitoring IAQ. We can help you align with air quality guidelines and recommendations set by the CDC, EPA, and ASHRAE.



System Components

- Hydronic Branch Conductor



Intelligent Services

Trane Intelligent Services provides one-on-one consultative support to reduce energy use, manage operational costs, and optimize building performance. Take the guesswork out of understanding building data to achieve more comfortable spaces while meeting your financial and environmental goals.



Trane Creative Solutions

Customized Trane Equipment Modifications Including: Multizone Replacements, Water-Side Economizer Coils for Air-Cooled Chillers, Packaged Air-Cooled Ice Storage Systems, Acoustical Attenuation



Engineer and Contractor Resources

Trane is here to support, enable and educate Engineers and Contractors through comprehensive tools and resources, design and analysis tools, professional education and training, BIM and CAD drawings, and pre-engineered system solutions.

traneengineer.com | tranecontractors.com



Energy Services

Trane enables more efficient, sustainable buildings by providing a single source for decarbonization and modernization solutions, programmatic implementation services, and financing and funding options. We use deep expertise and a data driven approach to understand how energy impacts your unique situation, and collaborate to develop strategies to deliver your goals for carbon reduction, resiliency, and energy efficiency.

Energy Solutions include:

Building modernization and automation | Lighting | Water Conservation | Renewables and Distributed Energy Resources | Funding, financing, and procurement programs.

Trane is accredited by NAESCO as an Energy Services Provider (ESP), a U.S. DOE-qualified Energy Services Company (ESCO), and recognized by the Canadian Federal Buildings Initiative as a qualified bidder.

Controls & Automation



Tracer® SC+ Building Automation System

Scalable building automation system solution with standard, open protocols.



Tracer® Synchrony®

Tracer SC+'s built-in web based user interface software for building operators.



Tracer® Concierge®

Light commercial control system with set-up wizard for installers and simple user interface for non-technical users.



Air-Fi® Wireless Sensors

Flexible and reliable wireless sensors & system communications leveraging Air-Fi® Wireless (BACnet/Zigbee) technology. Sensors include temperature, humidity, CO₂ & occupancy.



Symbio® Equipment Controls

Application Specific and Programmable Unit Controllers, Integrates with BACnet MSTP, BACnet/IP, BACnet/Zigbee, Lontalk & Modbus Protocols



Pivot® Smart Thermostat

Wi-Fi & Ethernet thermostat for light commercial applications.

Digital Solutions



Trane® Connect™

Integrates building data under a single easy-to use interface, with performance metrics available 24 hours a day.



Trane® Autonomous Control

AI-based solution that performs automatic system optimization using real-time weather data and predictions, building occupancy trends & energy usage patterns.



Tracer® Ensemble® Building Management System

Enterprise level building management software for facility professionals.

IAQ Solutions



Synexis

Best in class air purification and surface cleanliness by creating Dry Hydrogen Peroxide from naturally occurring oxygen and humidity in the air to significantly reduce many different pathogens.



TCACS

Trane Catalytic Air Cleaning System (TCACS) is an enhanced air filter containing 3 technologies: filtration, ultraviolet light, and a photocatalytic oxidation (PCO) process.

Trane® / Mitsubishi Electric VRF & Ductless



CITY MULTI® VRF

Energy efficient air and water cooled, all electric VRF systems available in high efficiency, and H2i® (Hyper-Heat); 6 - 36 Tons



HVRF

All electric, hybrid VRF system that uses refrigerant and water. Hybrid branch controller provides simultaneous heating and cooling; 6 - 36 Tons



M & P Series

Ductless systems for superior comfort, flexibility and reliability with precise zone control to distribute heating or cooling only to spaces in use; 0.5 - 5 Tons; R-454B



SMART MULTI®

Light commercial multi-zone ductless heat pump system, side discharge outdoor unit; 3 - 10 Tons; R-454B



Indoor Units

A variety of indoor units available to meet any application and design requirements, including ceiling cassettes, wall mounted, concealed and more.



LEV Kit

The power to connect Trane® / Mitsubishi Electric CITY MULTI® products to Trane air handlers; allows for higher airflows, higher static pressure, larger capacity, customized products, and DOAS configurations.

Data Center Cooling



Trane Fan Coil Wall (TCDC)

Trane TCDC Fan Coil Wall delivers energy-efficient, high-capacity cooling up to 670kW and 110K CFM, designed for precise temperature control and reliable performance in high-density data centers.



Trane Coolant Distribution Unit (CDU) - Model TCDU

Trane Coolant Distribution Units deliver space-saving, energy-efficient direct-to-chip liquid cooling with capacities from 1MW to 10MW, featuring advanced filtration, integrated ATS, and scalable performance for AI factories, hyperscale, and colocation data centers.



Trane Computer Room Air-Handler model VCDC

Trane VCDC delivers efficient, scalable cooling for data centers in a compact design. Available in 50-300kW capacities, it features high-efficiency ECM fans and robust insulation for reduced energy use, flexible layouts, and reliable performance.

Water-Cooled Centrifugal Chillers



Agility® Model HDWA

175 - 500 Tons; Heating and Cooling capable; Up to 130°F HW; 60 Hz; Symbio® 800 controller; R-513A



CenTraVac® Model CVHE

3-Stage Compressor; Heating and Cooling capable; Free Cooling; Symbio® 800 controller; 200 - 500 Tons; R-514A



CenTraVac® Model CVHF

2-Stage Compressor; Heating and Cooling capable; Free Cooling; Heat recovery operation; Symbio® 800 controller; 325 - 1800 Tons; R-514A



CenTraVac® Model CVHH

Multi-stage compressor; Heating and Cooling capable; Free Cooling; Heat recovery operation, Symbio® 800 controller; 850 - 2000 Tons; R-1233zd



CenTraVac® Model CDHF

Multi-Stage Dual Compressor; Symbio® 800 controller; 1450 - 3950 Tons; R-514A



CenTraVac® Model CDHH

Multi-stage; Dual Compressor; Heating and Cooling capable; Heat recovery operation; Symbio® 800 controller; 1800 - 4000+ Tons; R-1233zd

Water-Cooled Helical Rotary Chillers



Series R™ Model RTWD

Helical Rotary Compressor; Heating and Cooling capable; Heat recovery operation; Up to 165°F HW production; Symbio® 800 controller; 80 - 250 Tons; R-513A and R-515B



Series R™ Model RTHD

Optional Variable Speed Helical Rotary Compressor; Heating and Cooling Capable; Heat recovery operation; Symbio® 800 controller; 175 - 400 tons; R-513A

Air-Cooled Chillers



Ascend™ Model ACX

Air-to-Water Heat Pump; Symbio® 800 controller; 80-230 tons cooling; 1000 - 2500 MBh heating; R-454B



Ascend™ Model ACS

Scroll Compressor; Symbio® 800 controller; 140 - 230 Tons; R-454B; Partial Heat Recovery Option



Ascend™ Model ACR

Variable Speed Helical Rotary Compressor; Free Cooling; up to 145°F high ambient Symbio® 800 controller; 150 - 550 Tons; R-513A or R-1234ze



Model CGAM

Scroll Compressor; Symbio® 800 controller; 20 - 130 Tons; R-454B; Partial Heat Recovery Option



Trane Air-Cooled Magnetic Bearing Chiller Model TCA

Oil-free Centrifugal Compressor; 60-850 Tons High Cooling Capacity; Symbio® 800 controller; R-513A or R-1234ze



Sintesis™ Model RTAF

Variable Speed Helical Rotary Compressor; Symbio® 800 controller; 115 - 500 Tons; R-513A

Industrial Process Cooling



TAEvo TECH

Air-cooled process chiller; Indoor and outdoor use; 1-50 Tons; R-410a

Modular Heat Pumps & Chillers



Thermafit™ Model AMC

Air-Cooled Chiller; Optional Free-Cooling, Heat Recovery Up to 140°F (60°C); 15-80T Modules (1 - 12 Modules per Bank); R-454B



Thermafit™ Model MWC

Water-Cooled Chiller; Optional Heat Recovery Up to 180°F*; 15-80T Modules (1-12 Modules per Bank); R-454B; R-513*



Thermafit™ Model MAR
Split Chiller with Remote Condenser; 15-80T Modules (1 - 12 Modules per Bank); R-454B



Thermafit™ Model AXM
Air-to-Water Heat Pump Vapor Injection Compressors; Up to 140°F (60°C) 30T Modules; 374 MBH (1 - 12 Modules per Bank); R-454B



Thermafit™ Model WXM
Water-to-Water Heat Pump; Up to 140°F (60°C) 20-80T Modules; 262-1033 MBH (1 - 12 Modules per Bank); R-454B



Thermafit™ Model MWS
Water-Source Multi-pipe; Up to 140°F (60°C) 30-60T Modules; 432-942 MBH (3 - 10 Modules per Bank); R-454B



Thermafit™ Model MAS
Air-Source Multi-pipe; Vapor Injection Compressors; Up to 140°F (60°C); 30T Modules; 433 MBH (3 - 10 Modules per Bank); R-454B



Thermafit™ Model TACW
Water-cooled chiller; Oil-free centrifugal; 60 - 135 Tons (1000 Ton Banks); R-513A

Thermal Storage



Thermal Energy Storage Tanks

Helps manage peak electric demand for buildings with chilled water heating and cooling systems above 100 tons. Enhances energy usage and helps lower operating costs by storing and leveraging renewable, excess, or inexpensive energy.



Thermal Battery Air-Cooled Chiller Plant

Pre-Engineered, Factory Built Cooling System. Incl: Air-Cooled Chillers, CALMAC® Energy Storage Tanks, Customizable System.



Thermal Battery Storage-Source Heat Pump System

Delivers Heating and Cooling, Supports Electrification. Incl: Water-to-Water and Air-to-Water Heat Pumps, CALMAC® Energy Storage Tanks, Trane Controls.

Packaged Units



Impack®
Cooling, Gas/Electric, Heat Pump & Dual I-Fuel; Multiple Efficiency Levels; Up to 16 SEER; (1 ph-15 SEER2); 2 - 5 Tons



Foundation®
Cooling, Gas/Electric; Adapts to Competitors Roof Curbs; Symbio 700 control with Mobile App (15-25 tons); 3 - 25 Tons



Precedent® & Precedent® with eFlex™
3 - 25 Tons; Cooling, Gas, Electric, Heat Pump & Hybrid Dual Fuel; Standard, High, & eFlex Ultra-High Efficiency (up to 25.4 IEER); Symbio 700 control with Mobile App and Air-Fi® capable



Zoned Rooftop Systems

Pre-designed for small building comfort; Includes Precedent or Voyager rooftop unit, VAV terminal units, Tracer® Concierge™ system control & Air-Fi® wireless controls & sensors; 3 - 50 Tons



Voyager® 3

Cooling, Gas/Electric; eStage™ Multi-Stage Compressors; Full & part load efficiencies; Symbio 700 and Mobile App; Up to 17.5 IEER; 27.5 - 50 Tons



IntelliPak® 1

Cooling, Gas/Electric, Hot Water; 20 - 130 Tons (Available with eFlex™ Variable Speed Compressor; 20 - 75 Tons), Symbio 800 Controller with 7" Touchscreen Display, Air-Fi® Capable; up to 19 IEER



IntelliPak® 2

Cooling, Gas/Electric, Hot Water, Air-Cooled; 90 - 150 Tons, Available with eFlex™ Variable Speed Compressor, Standard Double Wall Foam, Symbio 800 Controller with 7" Touchscreen Display, Air-Fi® Capable; Up to 19.1 IEER



IntelliPak® 3

Cooling, Gas/Electric; 20 - 75 Tons, Available with eFlex™ Variable Speed Compressor, Standard Double Wall Foam, Symbio 800 Controller with 7" Touchscreen Display, Air-Fi® Capable, Up to 17.8 IEER



Trane Thrive (OAXX)

Indoor Agriculture packaged product (DX, Air and Water Cooled); Heat Pump, Gas, and Hot Water; 3-80 Tons

Self-Contained Units



Water-Cooled Self-Contained Model SWUD

Single-piece units ideal for new construction market; Redesigned with upgraded features; Symbio 500 controller with TD7; Up to 22.8 IEER; 20-110 Tons



Modular Self-Contained System

Smallest Footprint on the Market; Water-Cooled System; Variable speed compressors and fans; Symbio 500 controller with TD7; Industry-leading Part Load Efficiency - Up to 20.8 IEER; 20 - 110 Tons, cassette construction

Water-Source Heat Pumps



Axiom™ Standard Efficiency Model GEH/GEV

Horizontal (0.5 - 15T) or vertical (0.5 - 25T); Deluxe sound option for quiet operation; Multiple airflow configurations; 0.5 - 25 Tons



Axiom High Efficiency Single-Stage Model EXH/EXV

Horizontal or vertical; Deluxe sound option for quiet operation; Electronically Commuted Motor (ECM); Rotary or scroll compressor; 0.75 - 6 Tons



Axiom High Efficiency Two-Stage Model DXH/DXV

Horizontal or vertical; 2-Stage compressor; Deluxe sound option for quiet operation; Meets LEED EAc4 requirement; 2 - 6 Tons



Axiom Variable Speed Model VSH/VSV

Horizontal or vertical; eFlex™ Variable Speed compressors and fans; Single and three phase voltage; 2 - 5 Tons



Axiom High Efficiency Console Model GEC

ASHRAE 62 indoor air quality compliant; Quiet operation; 0.5 - 1.5 Tons



Axiom Vertical Stack Model GET

Multiple capacities & cabinet sizes; Available in PSC or ECM motors; Flexible air supply options; Integrated controls; 0.75 - 3 Tons



Axiom Water-to-Water Model EXW

Co-axial heat exchanger; Rackable modular design; 5, 10, 20 Tons



Axiom Rooftop Models GWS & GSJ

Boiler/Tower or Geothermal applications; Multiple configuration options; GWS (3-10 Tons); GSJ with Symbio 700 controls (12.5 - 25 Tons)

Domestic Hot Water Heat Pumps



Trane® Domestic Hot Water Heat Pumps

Water-Source, monobloc style. Double wall heat exchanger and direct pipe ready. Up to 175°F; supply heating capacities of 6-116 Tons for single-pass units and up to 140 Tons for multi-pass units.

Air Handling Units



Performance Climate Changer® - Catalog (UCCA)

Dependable performance at an uncompromising value; Compact Footprint; Factory-Engineered, Mounted & Tested Controls; Indoor/Outdoor; <15,000 cfm; 2" R-13 Construction

Performance Climate Changer® - Semi-custom (CSAA/PSCA)

Versatility meets high performance. Robust construction, wide array of options to meet the needs of a variety of industries and environments: Dimensional Flexibility enabling Easy Installation: Indoor/Outdoor; <60,000 cfm; up to +/- 12 in. w.g.; 2", R-13 or 3", R-19 Construction; Factory Engineered, Mounted & Tested Controls



Performance Climate Changer® - Custom (TCFS/TCPA)

Now available in side-by-side configurations; Indoor or outdoor; Unlimited dimensional flexibility and airflow; Up to +/- 12 in. w.g. operating pressure, with <1/2% air leakage rate; Absolute thermal barrier with performance up to R-25



**Trane Air Rotation Unit**

Maintains temperature and humidity consistently in spaces >40,000 sf with a ceiling height of >25 ft. Indoor or Outdoor; Up to 300 tons and 120,000+ CFM; CW or DX; 2" Foam Insulated panels, factory engineered & mounted controls

Indirect Fired Make-Up Air Units**Model GSAA**

Indoor Gas-Fired Make-Up Air Handlers; Standard & High Efficiency; 100 - 1200 MBH

**Model GRAA**

Outdoor Gas-Fired Make-Up Air Handlers; 100 - 1200 MBH

**Model AHOA**

Packaged Air Handlers; Cooling, Make-Up Air, & Ventilation

Unit Heaters**Hydronic Unit Heaters**

Model UHS/UHP
38 unit sizes from 8 to 720 MBh; Vertical and horizontal configurations; 2-point or 4-point installation; Single point power: Steam or hot water; OSHA fan guard; ETL/ETLc certified

**Electric Unit Heaters****Model UHWA/UHAA/UHRA/UHXA/UHEC/UHCA**

7 styles, over 200 configurations; Sized from 1.5 to 50 kW; Capacities from 5 to 16.4 MBh; Vertical or horizontal discharge; Single point power; UL Listed

**High Efficiency Gas Fired Unit Heater Model HINA/HIPA**

6 sizes: 50-400MBH, natural and LP gas. 3:1 self-modulating turndown; >95% Efficiency

**Gas Fired Unit Heaters**

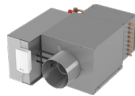
14 sizes, from 30 to 400 MBh; 409 stainless steel; Single point power; Direct Spark ignition; Tubular heat exchangers; OSHA fan guard

Terminal Units**Blower Coil**

Blower Coil Model BCXE; Indoor; Up to 4000 CFM; Horizontal and Vertical Configurations; ECM Motors, Multiple Filter Options, Factory-Engineered & Mounted Controls

**CoolSense® Sensible Cooling (DOAS) Terminal Unit**

>2200 CFM, MERV-13 filters, and active humidity and ventilation control; Heating options include conventional hot water or all-electric for building decarbonization

**VariTrane® Model VC*F**

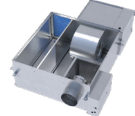
Single Duct Variable Air Volume Boxes; 25 - 8000 CFM; Optional Factory Installed Piping Package

**VariTrane® Model VDDF**

Dual Duct Variable Air Volume Boxes; 80 - 8000 CFM

**VariTrane® Model VP*F**

Parallel Configuration Fan-Powered Variable Air Volume Boxes; 200 - 2200 CFM

**VariTrane® Model VS*G**

Series Configuration Fan-Powered Variable Air Volume Boxes; 200 - 2500 CFM; optional integral suppressor attenuator available

**VariTrane® Model L**F**

Low Height Fan-Powered Variable Air Volume Boxes; 100 - 1800 CFM; Parallel or Series Configuration

**VariTrane® Model VRRF**

Round Inlet/Round Outlet RetroFit Variable Air Volume Boxes; 25 - 4000 CFM

**UniTrane® Model FC*B**

Horizontal or Vertical Fan Coil; Cabinet, Recessed or Compact Configurations; 200 - 1200 CFM

**Force-Flo™ Model FF*B**

Horizontal or Vertical Cabinet Heater; Concealed or Recessed Configurations; 200 - 1200 CFM

**Model VUVE**

Vertical Unit Ventilators; 750 - 1500 CFM

**Model HUVV**

Horizontal Unit Ventilators; 750 - 2000 CFM

Hydronic System Components**Hydronic Branch Conductor**

System component that enables energy-efficient, year-round comfort with any low temp hot water heating solution. Use in retrofits and new construction.

Split Systems**Split Systems**

Cooling & Heat Pump; Gas, Electric, or Hot Water Heat; 1.5 - 5 Tons

**Odyssey™**

Symbio® 700 controller ; Full & part load efficiencies; Up to 14.8 IEER; 6 - 25 Tons

**IntelliCore™ Condensing Units (RAUK/CAUK)**

R-454B Air-Cooled Condensing Units; Symbio 800 Controls; Available with or without compressors; Available with remote chiller evaporators; 20-120 Tons

**Condensing Units (RAUJ/CAUJ)**

R-410A Air-Cooled Condensing Units; Available with or without compressors; Available with remote chiller evaporators; 20-120 Tons

Outdoor Air Solutions**Horizon® DOAS (OAXX)**

DOAS; Packaged product (DX, Air and Water Cooled); Heat Pump, Gas, and Hot Water; >43°F Dew Point capability; ERV; AHRI 920 rated; 3-80 Tons

**Horizon® Flex™ (HAXX)**

Up to 100% outdoor air; Packaged product (DX - Gas Heating); >51°F Dew Point capability; ERV; AHRI 340/360 certified; ASHRAE 90.1 compliant; 10 - 15 Tons

VFD**TR150/TR200**

Trane Variable Frequency Drives; 6, 12, 18 Pulse

Data Centers

As a thermal management trusted innovator, we offer a portfolio of scalable systems all supported by a world-class local-to-you service network. Whether you are developing, designing, or operating in mission critical environments, our goal is to help you create and maintain a more sustainable data center infrastructure that brings efficiency now and for what comes next.

High Tech

Trane engineers understand the challenges of high tech manufacturing. We custom design, implement and optimize advanced mission-critical HVAC that gets it right for your building today and for the planet tomorrow. Whether you are constructing a new factory or retrofitting existing facilities, consult with us to ensure you have the future-ready guidance and technology you need.



Trane – by Trane Technologies (NYSE: TT), a global climate innovator – creates comfortable, energy efficient indoor environments through a broad portfolio of heating, ventilating and air conditioning systems and controls, services, parts and supply. For more information, please visit trane.com or tranetechnologies.com.

All trademarks referenced in this document are the trademarks of their respective owners.

© 2025 Trane. All Rights Reserved.

EDU-SLB048-EN
09/10/2025