



# National Line Card

## Products, Services, Solutions & Systems

Our goal is to deliver the outcomes that matter most to you — from more comfortable indoor environments to energy efficient operations.

We take a consultative approach to understand your unique business objectives, gather data and information to make informed recommendations, and support you from implementation to validation.

# Trane's Offerings

Our capabilities include commercial systems, energy services & solutions, contracting, controls/building automation, rentals and service.



## Building Services

Help reduce operating costs and extend the life of your equipment with planned, reliable, preventative and proactive scheduled maintenance and repair by Trane factory trained technicians.

- Service Agreements (Connected Mechanical Service Agreements)
- Extended Warranty
- Quoted Repair Products



## Smart Building Solutions

Transform your building into a sustainable, efficient, and resilient space for a smarter, people-centric environment.

- Controls and Automation
- Smart Services
- Digital Solutions & AI



## Rental Services

24/7/365 local service, engineering expertise and an expansive fleet of rental products. Promptly provides temporary, scalable HVAC and power from standard applications to complex solutions.

1-1000 ton Air- and Water-Cooled Chillers, Cooling Towers, Packaged A/C Units, Air Handlers, Portable A/C Units, Cold Storage Containers, LC Load Banks, Heat Pump Units



## IAQ Services

Today there are more ways than ever to assess and manage indoor air quality, while keeping your goals for cost and sustainability in sight. Trane offers a variety of services, innovative technologies, and proven solutions for measuring and monitoring IAQ. We can help you align with air quality guidelines and recommendations set by the CDC, EPA, and ASHRAE.



## Trane Creative Solutions

Customized Trane Equipment Modifications Including: Multizone Replacements, Water-Side Economizer Coils for Air-Cooled Chillers, Packaged Air-Cooled Ice Storage Systems, Acoustical Attenuation.



## Engineer and Contractor Resources

Trane is here to support, enable and educate Engineers and Contractors through comprehensive tools and resources, design and analysis tools, professional education and training, BIM and CAD drawings, and pre-engineered system solutions. [traneengineer.com](http://traneengineer.com) | [tranecontractors.com](http://tranecontractors.com).



## Thermal Management Systems

- Comprehensive Chilled Water Systems
- Comprehensive Heat Pump Chiller Systems
- CoolSense® Integrated Outdoor Systems
- Data Center Systems
- Geothermal Systems
- Intelligent Variable Air Systems
- Thermal Battery™ Systems
- Variable Refrigerant Flow (VRF) Systems
- Water-Source Heat Pump Systems
- Zoned Rooftop Systems



## System Enhancements

- Hydronic Branch Conductor



## Energy & Infrastructure Solutions

We partner with you to envision, execute, and sustain high-value facilities strategies that advance your organization's most important goals. Our comprehensive building and energy improvement programs deliver measurable outcomes: elevated environments, more empowered teams, and meaningful progress toward a more efficient, resilient, and sustainable future.

**Our infrastructure solutions include end-to-end, expert-led delivery of:**

- HVAC modernization
- Building automation and controls
- LED lighting upgrades
- Building envelope improvements
- Renewable energy and energy storage solutions
- Funding, financing, and procurement options
- Maintenance and facility management programs

## Controls & Automation



### Tracer® SC+ Building Automation System

Scalable building automation system solution with standard, open protocols.



### Tracer® Concierge®

Light commercial control system with set-up wizard for installers and simple user interface for non-technical users.



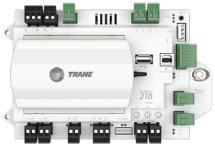
### Tracer® Synchrony®

Tracer SC+'s built-in web based user interface software for building operators.



### Pivot® Smart Thermostat

Wi-Fi & Ethernet thermostat for light commercial applications.



### Symbio® Equipment Controls

Application specific and programmable unit controllers, integrates with BACnet MSTP, BACnet/IP, BACnet/Zigbee, Lontalk & Modbus protocols.



### Air-Fi® Wireless Sensors

Flexible and reliable wireless sensors & system communications leveraging Air-Fi® Wireless (BACnet/Zigbee) technology. Sensors include temperature, humidity, CO<sub>2</sub> & occupancy.

## Smart Services

### Intelligent Services

Trane energy experts use advanced analytics to turn building data into actions that improve efficiency, reduce costs, and support long-term sustainability.

### Connected Building Services

Gain a more proactive approach to maintain your building. Using your building's data and Trane's analytics, you'll receive insights from Trane experts that help you understand how your building is performing.

### Connected Mechanical Services

Digital monitoring and remote diagnostics to keep your equipment running smarter — reducing costs, improving performance and ensuring comfort and compliance through proactive, data-driven maintenance.

## Digital Solutions & AI



### Trane® Cloud

Trane Cloud brings together data, analytics, applications and services into one secure, seamless digital hub, empowering teams to operate buildings more efficiently, reliably, sustainably and comfortably.



### AI Building Agent

Leverage real-time building data for streamlined operations, faster decisions, and optimal performance. Powered by the latest in Generative AI and advanced algorithms, ARIA connects equipment and building controls to enable informed insights and decision-making.



### Trane® AI Control

AI-based solution that performs automatic system optimization using real-time weather data and predictions, building occupancy trends & energy usage patterns.



### Cloud BMS

Reimagine how buildings are managed with an AI-ready, cloud-native system, engineered to unify operations across any building.



### Tracer® Ensemble® Building Management System

Enterprise level building management software for facility professionals.

## IAQ Solutions



### TCACS

Trane Catalytic Air Cleaning System (TCACS) is an enhanced air filter containing 3 technologies: filtration, ultraviolet light, and a photocatalytic oxidation (PCO) process.

## Data Center Cooling



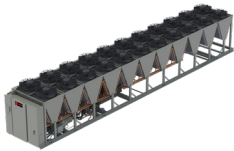
### CenTraVac® Model CVHH

Multi-stage compressor; Heating and Cooling capable; Heat recovery operation, Symbio® 800 controller; 850 - 2800 Tons; R-1233zd.



### CenTraVac® Model CDHH

Multi-stage; Dual Compressor; Heating and Cooling capable; Heat recovery operation; Symbio® 800 controller; 2000 - 6000 Tons; R-1233zd.



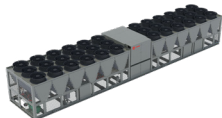
### Trane Ascend™ Trim Cooler

Features high-efficiency free cooling, leveraging ambient air for cooling. Reduces the need for mechanical cooling, lowering energy usage. Seamlessly integrates directly to Trane thermal management systems, helping to boost system efficiency.



### Ascend™ Model ACR

Variable Speed Helical Rotary Compressor; Free Cooling; up to 131°F High Ambient; Symbio® 800 controller; 550 Tons; R-1234ze.



### Trane Air-Cooled Magnetic Bearing Chiller Model TCA

Oil-free Centrifugal Compressor; Symbio® 800 controller; 300 - 850 Tons High Cooling Capacity; R-513A or R-1234ze.



### Trane CDU-1MW

With up to 1350kW of cooling capacity, the CDU-1MW is designed to support the latest AI chips and servers, delivering powerful coolant flow distribution in the smallest form factor.



### Trane GigaModular™ CDU-10MW

The GigaModular CDU is a centralized, modular, and scalable coolant distribution unit system delivering up to 10MW of high-density direct-to-chip cooling today and giga-scale tomorrow.



### Trane Computer Room Air-Handler Model VCDC

Trane VCDC delivers efficient, scalable cooling for data centers in a compact design. Available in 50–300kW capacities, it features high-efficiency ECM fans and robust insulation for reduced energy use, flexible layouts, and reliable performance.



### Trane Fan Coil Wall (TCDC)

Trane TCDC Fan Coil Wall delivers energy-efficient, high capacity cooling up to 900kW and 130K CFM, designed for precise temperature control and reliable performance in high-density data centers.

## Trane® / Mitsubishi Electric VRF & Ductless



### X Gen CITY MULTI® VRF

Energy efficient air and water cooled, all electric VRF systems available in high efficiency, and H2i® (Hyper-Heat); 6 - 36 Tons; R32.



### M & P Series

Ductless systems for superior comfort, flexibility and reliability with precise zone control to distribute heating or cooling only to spaces in use; 0.5 - 5 Tons; R-454B.



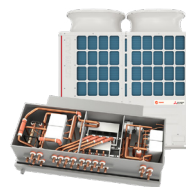
### SMART MULTI®

Light commercial multi-zone ductless heat pump system, side discharge outdoor unit; 3 - 10 Tons; R-454B.



### Lossnay ERV

Fixed plate energy recovery capable of sensible and latent heat recovery for ducted applications. Available in 300-1500 CFM.



### HVRF

All electric, hybrid VRF system that uses refrigerant and water. Hybrid branch controller provides simultaneous heating and cooling; 6 - 36 Tons.



### Indoor Units

A variety of indoor units available to meet any application and design requirements, including ceiling cassettes, wall mounted, concealed and more.



### LEV Kit

The power to connect Trane® / Mitsubishi Electric CITY MULTI® products to Trane air handlers; allows for higher airflows, higher static pressure, larger capacity, customized products, and DOAS configurations.

## Water-Cooled Centrifugal Chillers & Heat Pumps



### Agility® Model HDWA

Magnetic Bearing Centrifugal Compressor; Heating and Cooling capable; Up to 130°F HW; 60 Hz; Symbio® 800 controller; 175 - 500 Tons; R-513A.



### Agility® Twinplex™ Model HDTA

Magnetic Bearing Centrifugal Compressor; Symbio® 800 controller; 600 - 800 Tons; R-513A.



### CenTraVac® Model CVHE

3-Stage Compressor; Heating and Cooling capable; Free Cooling; Symbio® 800 controller; 200 - 500 Tons; R-514A.



### CenTraVac® Model CDHF

Multi-stage Dual Compressor; Symbio® 800 controller; 1450 - 3950 Tons; R-514A.



### CenTraVac® Model CVHF

2-Stage Compressor; Heating and Cooling capable; Free Cooling; Heat recovery operation; Symbio® 800 controller; 325 - 1800 Tons; R-514A.

## Water-Cooled Helical Rotary Chillers & Heat Pumps



### Series R® Model RTWD

Helical Rotary Compressor; Heating and Cooling capable; Heat recovery operation; Up to 165°F HW production; Symbio® 800 controller; 80 - 250 Tons; R-513A and R-515B.



### Series R® Model RTHD

Optional Variable Speed Helical Rotary Compressor; Heating and Cooling Capable; Heat recovery operation; Symbio® 800 controller; 175 - 400 Tons; R-513A.



### Series R® Model RTZA

Helical Rotary Compressor; Heating to 210°F; Symbio® 800 controller; Up to 3000 MBH; R-1233zd(E).

## Air-Cooled Chillers & Heat Pumps



### Ascend™ Model ACX

Air-to-Water Heat Pump; Symbio® 800 controller; 80 - 230 Tons cooling; 1000 - 2500 MBH heating; R-454B.



### Model CGAM

Scroll Compressor; Partial Heat Recovery Option; Symbio® 800 controller; 20 - 130 Tons; R-454B.



### Ascend™ Model ACS

Scroll Compressor; Partial Heat Recovery Option; Symbio® 800 controller; 140 - 230 Tons; R-454B.



### Sintesis™ Model RTAF

Variable Speed Helical Rotary Compressor; Symbio® 800 controller; 115 - 500 Tons; R-513A.



### Ascend™ Model ACR

Variable Speed Helical Rotary Compressor; Free Cooling; up to 125°F high ambient, Symbio® 800 controller; 150 - 550 Tons; R-513A.

## Industrial Process Cooling



### Industrial Process Chillers

Air-cooled process chiller;  
Indoor and outdoor use;  
1 - 50 Tons; R-410a.

## Modular Chillers & Heat Pumps



### Thermafit® Model AMC

Air-Cooled Chiller; Optional  
Free-Cooling, Heat Recovery Up  
to 140°F (60°C); 15-80T Modules  
(1 - 12 Modules per Bank); R-454B.



### Thermafit® Model WXM

Water-to-Water Heat Pump; Up to  
140°F (60°C) 20-80T Modules; 262-  
1033 MBH (1 - 12 Modules per Bank);  
R-454B.



### Thermafit® Model MWC

Water-Cooled Chiller; Optional  
Heat Recovery Up to 180°F\*; 15-  
80T Modules (1-12 Modules per  
Bank); R-454B; R-513A.



### Thermafit® Model MWS

Water-Source Multi-pipe; Up to  
140°F (60°C) 30-60T Modules;  
432-942 MBH (3 - 10 Modules per  
Bank); R-454B.



### Thermafit® Model MAR

Split Chiller with Remote  
Condenser; 15-80T Modules  
(1 -12 Modules per Bank);  
R-454B.



### Thermafit® Model MAS

Air-Source Multi-pipe; Vapor Injection  
Compressors; Up to 140°F (60°C); 30T  
Modules; 433 MBH (3 - 10 Modules per  
Bank); R-454B.



### Thermafit® Model AXM

Air-to-Water Heat Pump Vapor  
Injection Compressors; Up to 140°F  
(60°C) 30T Modules; 374 MBH (1 - 12  
Modules per Bank); R-454B.



### Thermafit® Model TACW

Water-cooled chiller; Oil-free  
centrifugal; 60 - 135 Tons (1000 Ton  
Banks); R-513A.

## Thermal Storage



### Thermal Energy Storage Tanks

Helps manage peak electric demand  
for buildings with chilled water  
heating and cooling systems above  
100 Tons. Enhances energy usage and  
helps lower operating costs by storing  
and leveraging renewable, excess, or  
inexpensive energy.



### Thermal Battery™ Storage-Source Heat Pump System

Delivers Heating and Cooling, Supports  
Electrification. Incl: Water-to-Water and  
Air-to-Water Heat Pumps, CALMAC®  
Energy Storage Tanks, Trane Controls.



### Thermal Battery™ Air-Cooled Chiller Plant

Pre-Engineered, Factory Built Cooling  
System. Incl: Air- Cooled Chillers,  
CALMAC® Energy Storage Tanks,  
Customizable System.

## Packaged Units



### Impack®

Cooling, Gas/Electric, Heat Pump & Dual-Fuel; Multiple Efficiency Levels; Up to 16 SEER; (1 ph-15 SEER2); 2 - 5 Tons.



### Foundation®

3 - 25 Tons; Cooling, Gas/Electric; Adapts to Competitors Roof Curbs; Symbio® 700 control with Mobile App (15 - 25 Tons).



### Precedent®

3 - 25 Tons; Cooling, Gas, Electric, Heat Pump & Hybrid Dual Fuel; Standard, High, & eFlex™ Ultra-High Efficiency (up to 25.4 IEER); Symbio® 700 control with Mobile App and Air-Fi® capable.



### Zoned Rooftop Systems

Pre-designed for small building comfort; Includes Precedent or Voyager rooftop unit, VAV terminal units, Tracer® Concierge™ system control & Air-Fi® wireless controls & sensors; 3 - 50 Tons.



### Voyager® 3

Cooling, Gas/Electric; 27.5 - 50 Tons; eStage™ Multi-staged Compressors; Symbio® 700 and Mobile App; Up to 17.5 IEER.



### IntelliPak® 1

Cooling, Gas/Electric, Hot Water; 20 - 130 Tons (Available with eFlex™ Variable Speed Compressor; 20 - 75 Tons), Symbio® 800 controller with 7" Touchscreen Display, Air-Fi® Capable; up to 19 IEER.



### IntelliPak® 2

Cooling, Gas/Electric, Hot Water, Air-Cooled; 90 - 150 Tons, Available with eFlex™ Variable Speed Compressor, Standard Double Wall Foam, Symbio® 800 controller with 7" Touchscreen Display, Air-Fi® Capable ; Up to 19.1 IEER.



### IntelliPak® 3

Cooling, Gas/Electric; 20 - 75 Tons, Available with eFlex™ Variable Speed Compressor, Standard Double Wall Foam, Symbio® 800 controller with 7" Touchscreen Display, Air-Fi® Capable, Up to 17.8 IEER.



### Trane Thrive (OAXX)

Indoor Agriculture packaged product (DX, Air and Water Cooled); Heat Pump, Gas, and Hot Water; 3 - 80 Tons.

## Self-Contained Units



### Water-Cooled Self-Contained Model SWUD

Single-piece units ideal for new construction market; Redesigned with upgraded features; Symbio® 500 controller with TD7; Up to 22.8 IEER; 20 - 110 Tons.



### Modular Self-Contained System

Smallest Footprint on the Market; Water-Cooled System; Fixed speed compressor with direct drive plenum fans with VFDs; Symbio® 500 controller with TD7; Industry-leading Part Load Efficiency - Up to 20.8 IEER; 20 - 110 Tons, cassette construction; ideal for new construction and replacement market.

## Air Handling Units



### Performance Climate Changer® Catalog (UCCA)

Dependable performance at an uncompromising value; Compact Footprint; Factory-Engineered, Mounted & Tested Controls; Indoor/Outdoor; <15,000 cfm; 2" R-13 Construction.



### Performance Climate Changer® Custom (TCFS/TCPA)

Now available in side-by-side configurations; Indoor or outdoor; Unlimited dimensional flexibility and airflow; Up to +/- 12 in. w.g. operating pressure, with <1/2% air leakage rate; Absolute thermal barrier with performance up to R-25.



### Performance Climate Changer® Semi-custom (CSAA/PSCA)

Versatility meets high performance. Robust construction, wide array of options to meet the needs of a variety of industries and environments: Dimensional Flexibility enabling Easy Installation: Indoor/Outdoor; <60,000 cfm; up to +/-10 in w.g.; 2", R-13 or 3", R-19 Construction; Factory Engineered, Mounted & Tested Controls.



### Trane Air Rotation Unit

Maintains temperature and humidity consistently in spaces >40,000 sf with a ceiling height of >25 ft. Indoor or Outdoor; Up to 300 Tons and 120,000+ CFM; CW or DX; 2" Foam Insulated panels, factory engineered & mounted controls.

## Water-Source Heat Pumps



### [Axiom™ Standard Efficiency Model GEH/GEV](#)

Horizontal (0.5 - 15T) or vertical (0.5 - 25T); Deluxe sound option for quiet operation; Multiple airflow configurations; 0.5 - 25 Tons.



### [Axiom High Efficiency Console Model GEC](#)

ASHRAE 62 indoor air quality compliant; Quiet operation; 0.5 - 1.5 Tons.



### [Axiom High Efficiency Single-Stage Model EXH/EXV](#)

Horizontal or vertical; Deluxe sound option for quiet operation; Electronically Commuted Motor (ECM); Rotary or scroll compressor; 0.75 - 6 Tons.



### [Axiom Vertical Stack Model GET](#)

Multiple capacities & cabinet sizes; Available in PSC or ECM motors; Flexible air supply options; Integrated controls; 0.75 - 3 Tons.



### [Axiom High Efficiency Two-Stage Model DXH/DXV](#)

Horizontal or vertical; 2-Stage compressor; Deluxe sound option for quiet operation; Meets LEED EA-c4 requirement; 2 - 6 Tons.



### [Axiom Water-to-Water Model EXW](#)

Co-axial heat exchanger; Rackable modular design; 5, 10, 20 Tons.



### [Axiom Variable Speed Model VSH/VSV](#)

Horizontal or vertical; eFlex™ Variable Speed compressors and fans; Single and three phase voltage; 2 - 5 Tons.



### [Axiom Rooftop Models GWS & GSJ](#)

Boiler/Tower or Geothermal applications; Multiple configuration options; GWS (3 - 10 Tons); GSJ with Symbio® 700 controls (12.5 - 25 Tons).

## Domestic Hot Water Heat Pumps



### [Heat2O Domestic Hot Water Heat Pumps](#)

Air-Source, Inverter scroll hermetic compressor; hot water supply up to 176F as low as -13F ambient; scalable up to 16 units, 40kW units (640KW combined total capacity); Up to 4.11 COP and 14.01 EER; R744.



### [Trane® Domestic Hot Water Heat Pumps](#)

Water-Source, monobloc style. Double wall heat exchanger and direct pipe ready. Up to 175°F; supply heating capacities of 6 - 116 Tons for single-pass units and up to 140 Tons for multi-pass units.

## Unit Heaters



### [Hydronic Unit Heaters Model UHS/UHP](#)

38 unit sizes from 8 to 720 MBH; Vertical and horizontal configurations; 2-point or 4-point installation; Single point power: Steam or hot water; OSHA fan guard; ETL/ETLc certified.



### [High Efficiency Gas Fired Unit Heater Model HINA/HIPA](#)

6 sizes: 50-400 MBH, natural and LP gas. 3:1 self-modulating turndown; >95% Efficiency.



### [Electric Unit Heaters Model UHWA/UHAA/UHRA/UHXA/UHEC/UHCA](#)

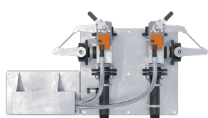
6 styles, over 200 configurations; Sized from 1.5 to 100 kW; Vertical or horizontal discharge; Single point power; UL Listed.



### [Gas Fired Unit Heaters](#)

25 unit arrangements from 30 to 400 MBH; 409 stainless steel; Single point power; Direct Spark ignition; Tubular heat exchangers; OSHA fan guard.

## System Enhancements



### [Hydronic Branch Conductor](#)

System component that enables energy-efficient, year-round comfort with any low temp hot water heating solution. Use in retrofits and new construction.

## Indirect Fired Make-Up Air Units



### Model GSAA

Indoor Gas-Fired Make-Up Air Handlers; Standard & High Efficiency; 100 - 1200 MBH.



### Model AHOA

Packaged Air Handlers; Cooling, Make-Up Air, & Ventilation.



### Model GRAA

Outdoor Gas-Fired Make-Up Air Handlers; 100 - 1200 MBH.

## Terminal Units



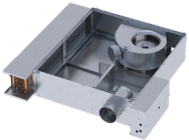
### Blower Coil

Blower Coil Model BCXE; Indoor; Up to 4000 CFM; Horizontal and Vertical Configurations; ECM Motors, Multiple Filter Options, Factory-Engineered & Mounted Controls.



### VariTrane® Model L\*\*F

Low Height Fan-Powered Variable Air Volume Boxes; 100 - 1800 CFM; Parallel or Series Configuration.



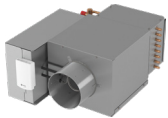
### CoolSense® Sensible Cooling (DOAS) Terminal Unit

>2200 CFM, MERV-13 filters, and active humidity and ventilation control; Heating options include conventional hot water or all-electric for building decarbonization.



### VariTrane® Model VRRF

Round Inlet/Round Outlet RetroFit Variable Air Volume Boxes; 25 - 4000 CFM.



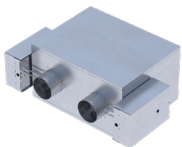
### VariTrane® Model VC\*F

Single Duct Variable Air Volume Boxes; 25 - 8000 CFM; Optional Factory Installed Piping Package.



### UniTrane® Model FC\*B

Horizontal or Vertical Fan Coil; Cabinet, Recessed or Compact Configurations; 200 - 1200 CFM.



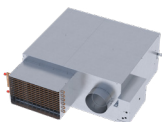
### VariTrane® Model VDDF

Dual Duct Variable Air Volume Boxes; 80 - 8000 CFM.



### Force-Flo™ Model FF\*B

Horizontal or Vertical Cabinet Heater; Concealed or Recessed Configurations; 200 - 1200 CFM.



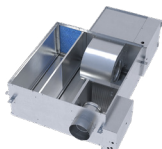
### VariTrane® Model VP\*F

Parallel Configuration Fan-Powered Variable Air Volume Boxes; 200 - 2500 CFM; optional low-leak casing engineered for ultra-quiet operation.



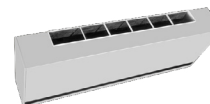
### Model VUVE

Vertical Unit Ventilators; 750 - 1500 CFM.



### VariTrane® Model VS\*G

Series Configuration Fan-Powered Variable Air Volume Boxes; 200 - 2500 CFM; optional integral suppressor attenuator available.



### Model HUVc

Horizontal Unit Ventilators; 750 - 2000 CFM.

## VFD



### TR150/TR200

Trane Variable Frequency Drives; 6, 12, 18 Pulse.

## Split Systems



### Split Systems

1.5 - 5 Tons; Cooling & Heat Pump; Gas, Electric, or Hot Water Heat.



### IntelliCore™ Condensing Units (RAUK/CAUK)

R-454B and R-410A Air-Cooled Condensing Units; Symbio® 800 Controls; Available with or without compressors; Available with remote chiller evaporators; 20 - 120 Tons.



### Odyssey™

6 - 25 Tons; Cooling and Heat Pump; Line sets up to 250 linear feet; Up to 14.8 IEER; Symbio® 700 controller.



### Commercial Gas Furnaces and Indoor Coils

40-120 BTU; Gas furnaces and indoor coils 80-97% AFUE; One, two or modulating heating stages.

## Outdoor Air Solutions



### Horizon® DOAS (OAXX)

DOAS; Packaged product (DX, Air and Water Cooled); Heat Pump, Gas, and Hot Water; >43°F Dew Point capability; ERV; AHRI 920 rated; 3 - 80 Tons.



### Horizon® Flex™ (HAXX)

Up to 100% outdoor air; Packaged product (DX – Gas Heating); >51°F Dew Point capability; ERV; AHRI 340/360 certified; ASHRAE 90.1 compliant; 10 - 15 Tons.

## Data Centers [Learn More >](#)



We deliver scalable, energy-efficient thermal management solutions supported by a global service network. Our experts help hyperscale and colocation data centers run smarter and more reliably through end-to-end design, build, and optimization. We offer

reference designs, including those developed with chip manufacturers, to speed planning, reduce risk, and improve performance across air, liquid, and hybrid cooling systems. Our latest innovations support gigawatt-scale AI facilities, boost efficiency, and include specialized options.

## High Tech [Learn More >](#)



Trane engineers understand the challenges of high tech manufacturing. We custom design, implement and optimize advanced mission-critical HVAC that gets it right for your building today and for the planet

tomorrow. Whether you are constructing a new factory or retrofitting existing facilities, consult with us to ensure you have the future-ready guidance and technology you need.



**To learn more visit [Trane.com](https://www.trane.com) or contact your Trane Account Manager.**



All trademarks referenced in this document are the trademarks of their respective owners.

Trane, a brand of Trane Technologies (NYSE: TT), is a global leader in climate solutions for buildings, homes, and industry. Learn more at [trane.com](https://www.trane.com) or [tranetechnologies.com](https://www.tranetechnologies.com).