



TRACE™ 3D Plus

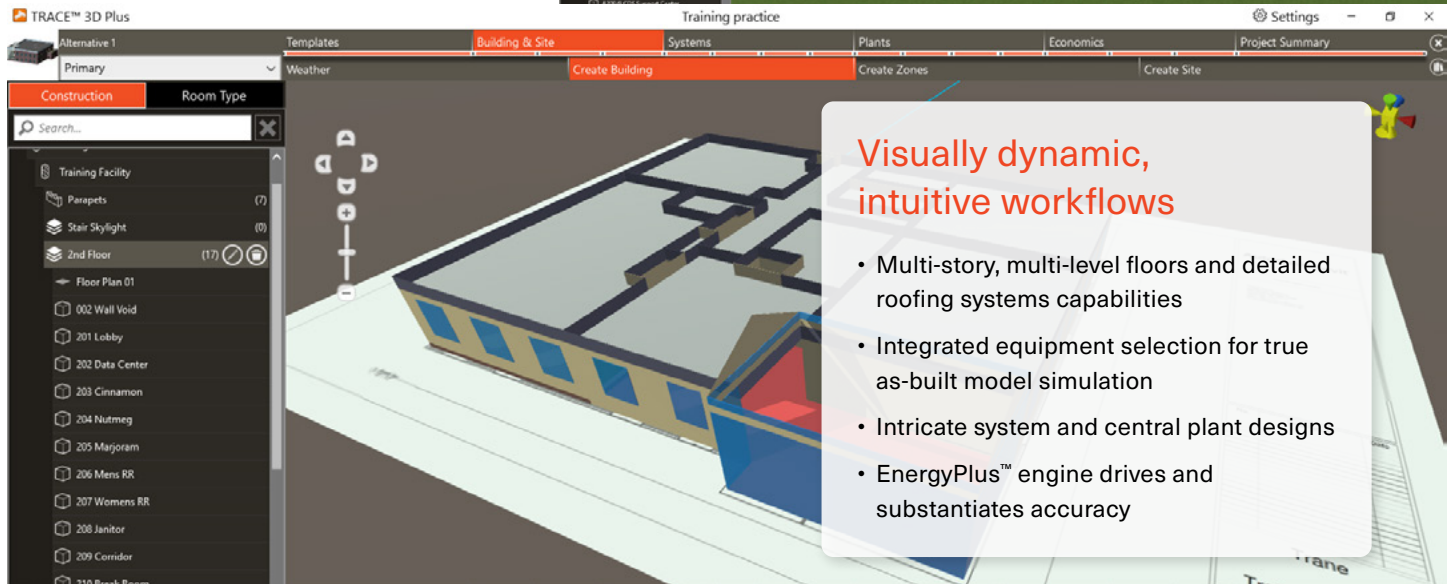
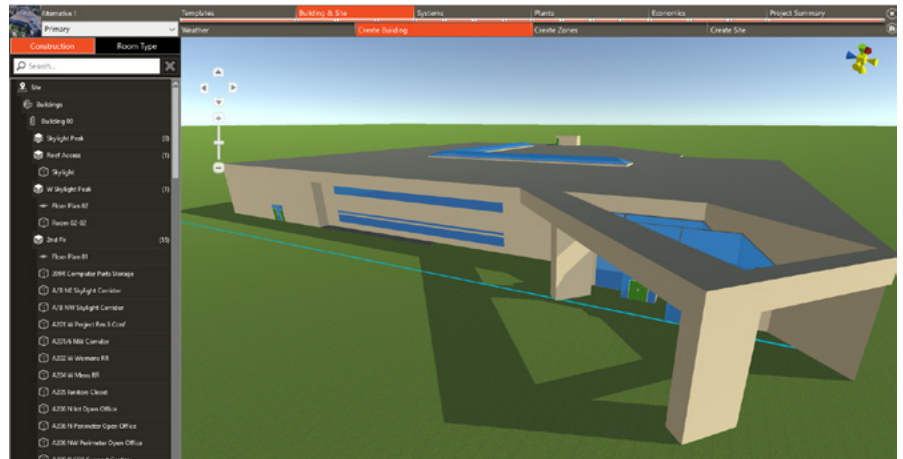
Fast, Accurate Building Design & Analysis



TRACE 3D Plus

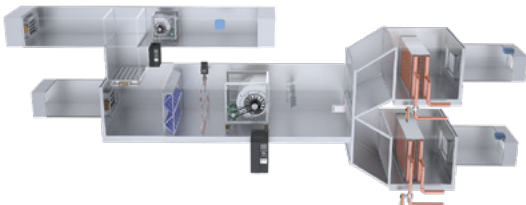
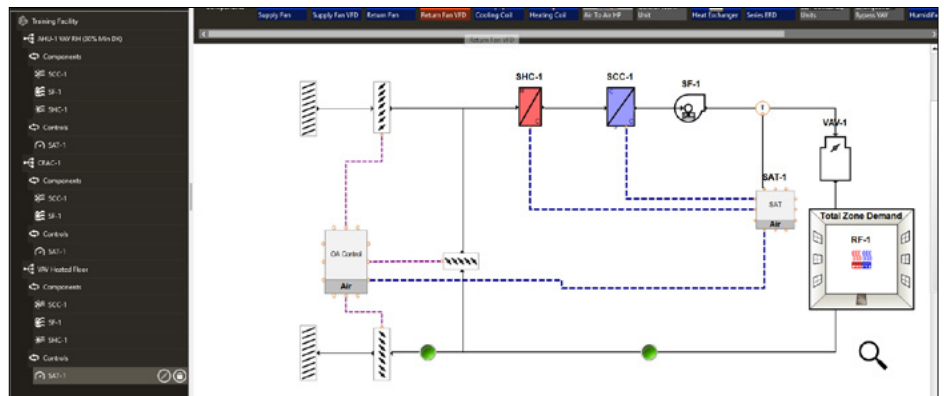
High Performance 3D Modeling for Sustainability

- Comprehensive energy modeling & economic analysis
- Demonstrates best options for carbon, renewable energy & cost savings
- Scalable interface from conceptual development to detailed design
- Room modification made easy with new 'Move Walls' feature



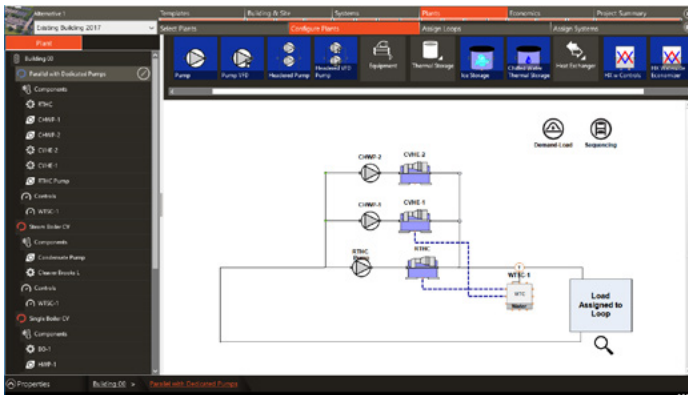
Model Complex Buildings & Systems with Ease

- View and validate architectural designs, HVAC systems in 2D and 3D views
- Built-in intelligence prevents potential modeling mistakes
- User interface designed for simplicity
- Guided experience matches real world design practices



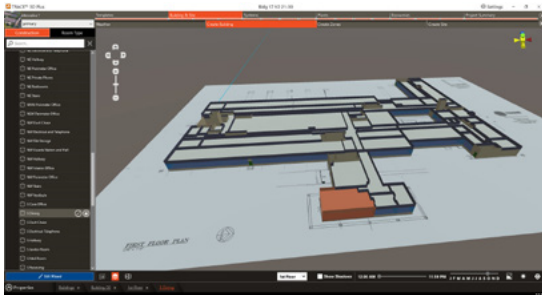
A new level of building design accuracy

TRACE™ 3D Plus is the next-generation building design and analysis software tool that delivers faster, more accurate results through a seamless workflow that closely aligns with today's building design process. The latest HVAC systems and controls can be modeled quickly and precisely with the intricacies of current building applications. TRACE 3D Plus combines the U.S. Department of Energy's EnergyPlus™ engine with Trane's industry-leading systems expertise to help designers interpret and validate projects with clarity. All of these new features, along with an unparalleled support team, help to get you up and running quickly.



Faster modeling process with visually dynamic workflows

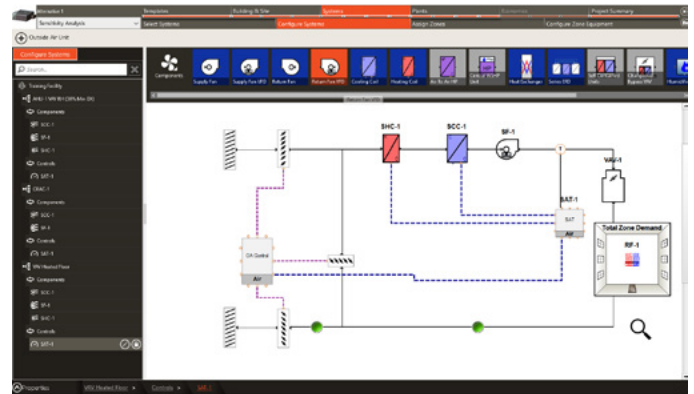
TRACE 3D Plus allows you to move from project plan to load design to energy and economic analysis, all within the same project file. Import 3D models directly from CAD tools using Green Building XML (gbXML), or import and trace over floor plans using quick drawing tools such as the PDF Scale Floor Plan feature or the move walls tool. Easily create and validate your architectural design, HVAC systems and component libraries in 2D or 3D.



- Create schedules faster with graphical plotting and drag-and-drop features.
- Use pre-configured building themes and thousands of pre-loaded and scalable libraries and templates.
- Schematically configure systems and plants easily with built-in validations and intelligence.
- Simplify complex codes and standards with the new standards wizard for ASHRAE 90.1 modeling.

Intuitive interface

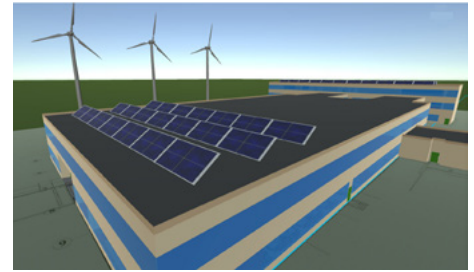
Now you can simplify the complex modeling process with the highly adaptable platform that is customizable to your desired level of detail. Built-in systems knowledge provides early detection of potential problems in your design. Defaults are pre-programmed into the software to reduce errors and save valuable time. Single click navigation to specific libraries, then quickly return to workflow. Graphics-rich reports communicate easy-to-understand information and insights for you to share with your project team. Ability to share libraries with teammates, using a single project file.





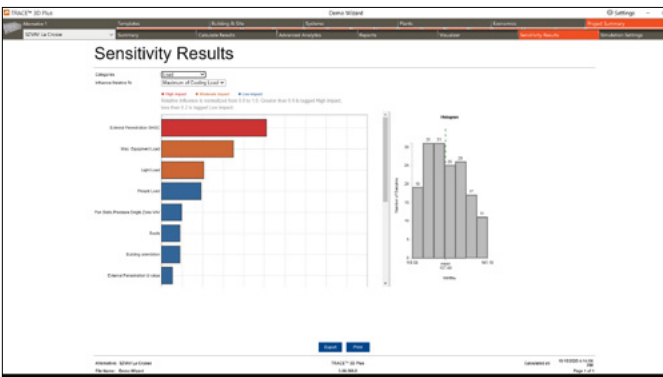
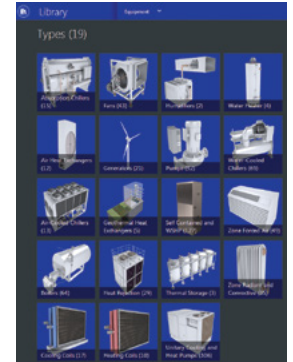
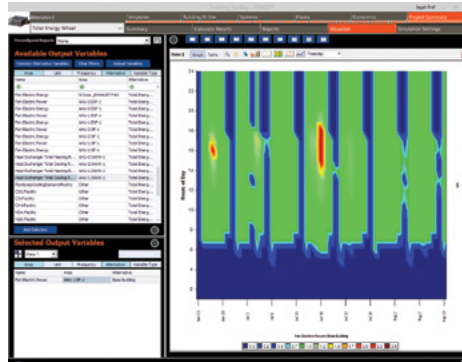
Illustrates real-world complexities

Accurately model real-world designs including VRF, radiant heating and cooling, renewable energy, and complex chilled and hot water systems, like those in mixed water and heat exchanger loops.



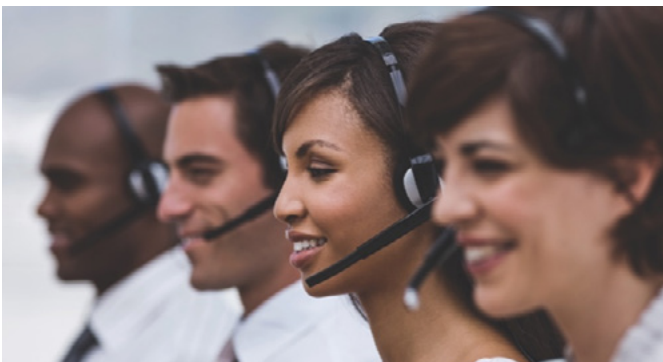
Reliable results

TRACE™ 3D Plus ensures greater equipment modeling accuracy by allowing you to import equipment data directly from Trane Select Assist™ or from spreadsheet performance data. Data Visualizer allows you to analyze models in tremendous detail, down to the time step, for hundreds of selectable variables.



Leveraging the Cloud

- Cloud functionality produces significantly faster simulation
- Simultaneous calculation & comparison of up to 20 alternatives
- Perform advanced, detailed sensitivity analysis
- Continuing to leverage cloud capabilities for the future



World-class support

TRACE 3D Plus is sold as a Software as a Service (SaaS) package with annual license renewals. The world-class support that you have come to rely on is now more robust and offers even more ways to interact, including a searchable online knowledge database and in-depth online training. As always, it is backed by a team of support engineers to help you migrate to this new software program.

To learn more, visit trane.com/TRACE3DPlus or call C.D.S. at **608-787-3926** to talk to a Trane engineer.



Trane – by Trane Technologies (NYSE: TT), a global climate innovator – creates comfortable, energy efficient indoor environments through a broad portfolio of heating, ventilating and air conditioning systems and controls, services, parts and supply. For more information, please visit trane.com or tranetechnologies.com.

All trademarks referenced in this document are the trademarks of their respective owners.

© 2021 Trane. All Rights Reserved.

CDS-SLB019-EN
02/02/2021