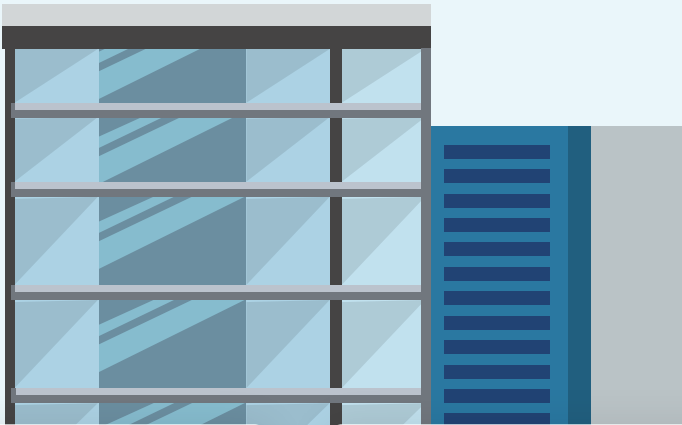


# Your Journey to a Smart Building



Through Trane's consultative approach, we can help you develop an affordable plan to transform your building into an intelligent, responsive space that provides optimal comfort and performance.

No matter where you are in your journey, Trane experts will guide your building toward its full potential to be **smart and sustainable**.



### Pneumatic Controls (No connectivity)

**RISKS**

- May not keep up with stricter regulations
- Older techs are retiring; younger techs don't know how to service the controls
- May be incompatible with any new equipment you may need to add



### Building Control Unit (BCU) Trane or Non-Trane (No or limited connectivity)

**RISKS**

- New equipment may be incompatible with your BCU
- Not receiving regular security updates, risking cyber attack
- Younger facility managers are unfamiliar with BCUs



### Tracer® SC (May have limited network/integration capabilities)

**RISKS**

- No longer supported with regular updates, risking cyber attacks
- Can't take advantage of today's IoT capabilities or advanced analytics
- May not be as flexible or future-proof as needed

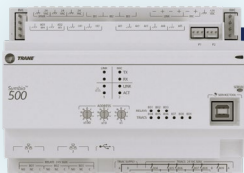
**Start by auditing your building infrastructure:**  
System controller, HVAC equipment controllers, connectivity points

**Upgrade building control to Tracer SC+ for real-time insights and automation of HVAC, lighting and security.**



SC can be directly replaced with SC+ for an immediate infrastructure enhancement

If you already have connected equipment, follow this path



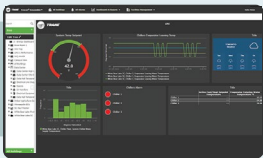
**Add Symbio® controls to your HVAC equipment**

**Integrate existing controls and upgrade as necessary to enable full connectivity and network integration over time.**

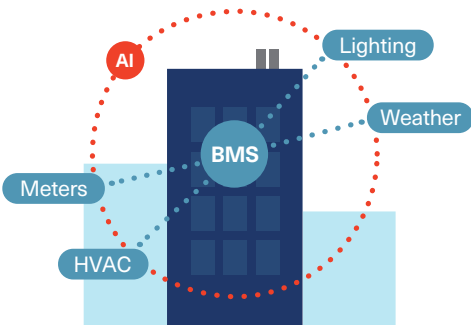


**Add Air-Fi® Wireless to further extend connectivity across your system**

Earmark dollars from your energy efficiency savings to pay for the next upgrade



**Add Tracer Ensemble to gain further visibility into system performance and energy usage.**



### Unlock Smart Building Benefits

**Decarbonization**

Modern controls provide data to help drive down emissions from every angle

**Higher Performance**

Smart buildings are capable of leveraging emerging technologies such as AI, as well as deep system analysis and data analytics to run even more efficiently

**Improved Productivity**

Intuitive interfaces and automated tasks save time and effort, freeing your staff for other responsibilities